

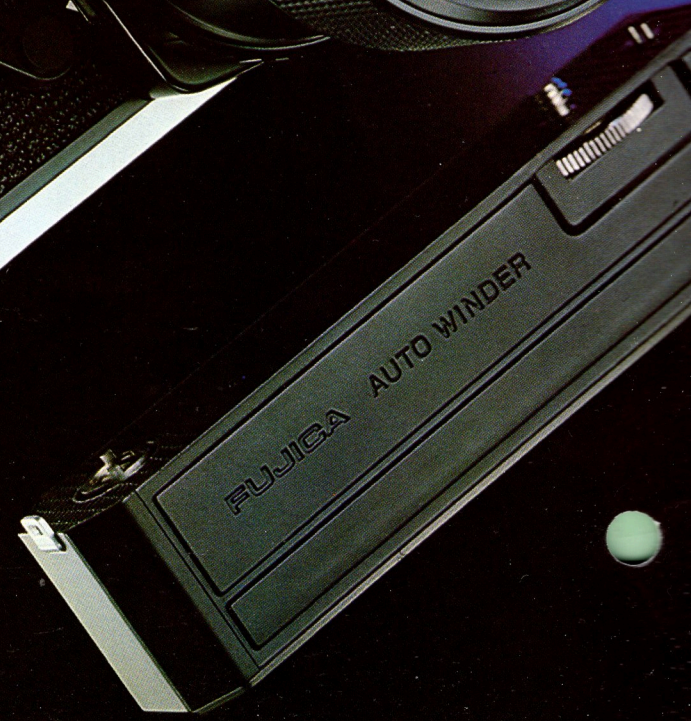
# ZOOM SLR



# FUJICA A1Z-1



# FUJICA



# AZ-1

# ZOOM SLR

## **WORLD'S FIRST FULLY AUTOMATIC 35mm SLR WITH STANDARD ZOOM OPTIC!**

Fuji Photo Film Co., one of the world's foremost manufacturers of photographic and allied products, proudly presents the all new Fujica AZ-1, the world's first fully automatic 35mm SLR camera with zoom optic as part of the standard initial-purchase package. This highly advanced camera incorporates the ultimate in electronics and camera-manufacturing technologies.

Its main features are:

### **WORLD'S FIRST STANDARD ZOOM OPTIC**

The new Fujinon·Z 43—75mm zoom optic is the first such lens to be included in the standard initial-purchase package of any camera. This light, compact lens offers extreme ease of use. And picture composition is easy by merely zooming in and out. Cost economy is also outstanding as this one zoom lens performs the functions of several interchangeable lenses.

### **MICRO-COMPUTER SHUTTER SPEED CONTROL**

The Fujica AZ-1 also features the world's most accurate and reliable automatic exposure system. Advanced new I<sup>2</sup>L (Integrated-Injection Logic) LSI circuitry has made exposure values correct even under severely extreme light conditions. And LEDs in the viewfinder indicate the shutter speeds in seven ranges from 1/2 to 1/1000 second.

### **OPTIONAL SYSTEM ACCESSORIES**

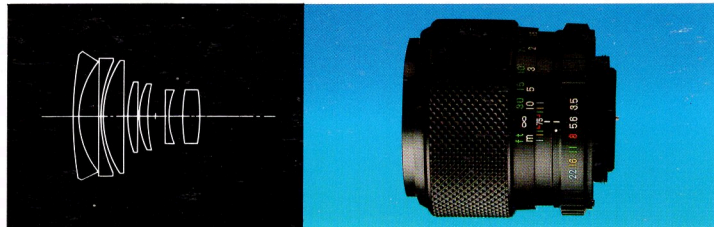
A full range of optional system accessories is also available for the Fujica AZ-1. For example, the Fujica Auto Winder which attaches with a few turns of a knob and automatically winds the film and cocks the shutter. Or the Fujica Auto Strobe AZ that performs all flash calculations automatically after one simple setting is made. Both of these options give the photographer greater freedom. And the Fujinon·Z 43—75mm zoom optic makes the Fujica AZ-1 a "true" system camera by enhancing all the other features.

# ZOOM

The New Way  
to Add Variety

FUJINON · Z 43-75mm f/3.5-4.5

75mm



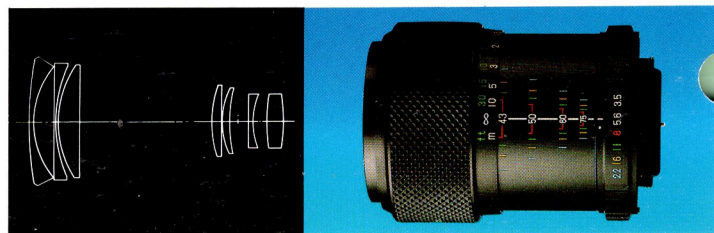
Telephoto

55mm



Normal

43mm



Wideangle

## Quick, Easy Framing By Zooming

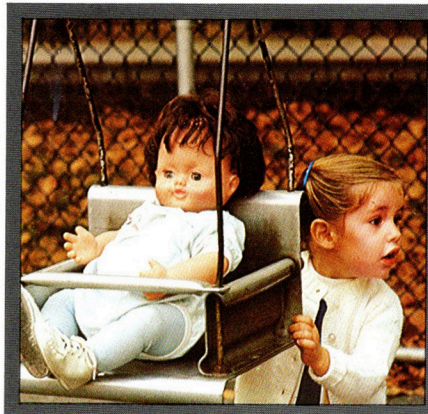


The Fujinon-Z 43-75mm zoom is especially handy anywhere movement is restricted. For example, at the theater, night clubs or even at home. Want a close-up? Zoom in! Want a wide-angle shot? Zoom out! It's as easy as that. No more need to move back and forth searching for the best angle. Just zoom and enjoy fine photographs.

## The Entire Range From Wide-angle to Telephoto With One Lens!



At the 43mm position the Fujinon-Z zoom is a wide-angle lens. Scenic views and group shots have a feeling of greater spaciousness. This range is also great for getting the whole family into one shot.



Of course, the standard focal length is also great for taking pictures of people. Whether in groups or singles, the effect is natural. Although the Fujinon-Z 43-75mm zoom covers more than the standard lens range, it is no bigger or heavier. Convenience is great for normal use anywhere.



For sports action you can zoom all the way to capture those exciting moments forever. Or you can photograph the whole scene at the wide-angle range. Whichever part of the zoom range you use, you'll always be ready for whatever comes next.



The telephoto range also makes possible selective focusing. You can isolate any part you want when photographing animals, flowers and other subjects from nature. Such effects are easy with the Fujinon-Z zoom.

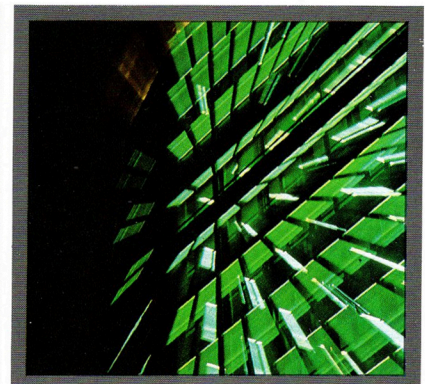
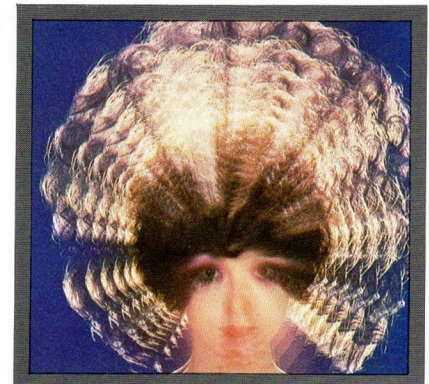


Another possibility in the telephoto range is portraits. This range gives a pleasing natural effect when shooting people. Proportions are reproduced with lifelike realism. There is no distortion due to the focal length being too short.

## Zoom Comes Into Its Own For Special Effects



The zoom ratio of nearly 2X lets you create a variety of special effects. For example, a feeling of extreme speed can be created by zooming while shooting. Great for sports car racing and other fast action.



Another zoom effect makes beautiful color patterns that emphasize the subject. Many effects such as those above can be done by zooming at various speeds while shooting.



Many interesting variations can be discovered. Zooming while shooting night lights gives especially fascinating effects. Test your own imagination with the great new Fujinon-Z 43-75mm zoom optic!



## Get The Most Out Of Photography - With The New Fujinon-Z 43-75mm Zoom Optic!

For the first time anywhere, a zoom optic has been included in the standard initial-purchase package of a camera. In other words, you can purchase the new Fujica AZ-1 with the exciting new Fujinon-Z 43-75mm zoom optic as standard equipment\*. This compact zoom weighs a mere 300g (10.5 oz), little different from any standard lens, and features coverage that extends from the standard focal length into both the wide-angle and telephoto ranges on either side. A great convenience whatever type of photographs you

take.

The range of applications possible with this zoom optic is truly amazing. Scenes and portraits can be framed perfectly with a minimum of movement by either photographer or subject. Group shots and scenic views are easy at the 43mm setting. And the 75mm focal length is perfect for both portraits and closely cropped scenes anywhere. Then there's the entire range in between for a world of beautifully composed pictures.

The Fujinon-Z also makes possible a great variety of special

effects. For example, zooming while releasing the shutter for an abundance of interesting effects.

In addition to the above features, the Fujinon-Z zoom optic makes it easy to get the most from 35mm SLR camera functions. There is no need to frequently change lenses so fewer chances are missed. And the speed plus mobility made available by AE, Auto Winder and Auto Strobe are enhanced to the optimum degree.

*\* The AZ-1 is also available with either 50mm f/1.4 or 55mm f/1.8 normal optic.*



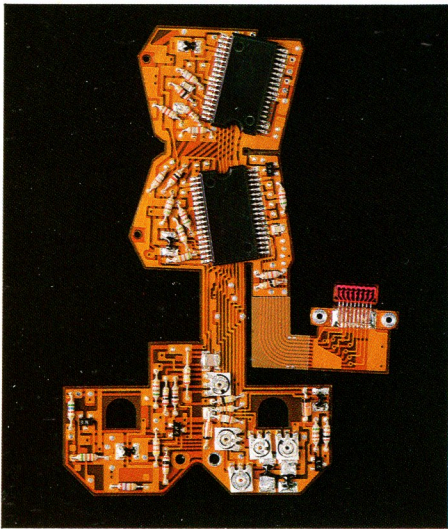
*At the telephoto position the FUJINON-Z 43-75mm zoom optic is almost the same size as a normal standard lens. Even when extended to the wide-angle position it is compact and easy to handle.*

# AE

## Advanced Electronics Technology Brings A Revelation In Automatic Exposure Accuracy and Reliability

### A Real Micro-computer System

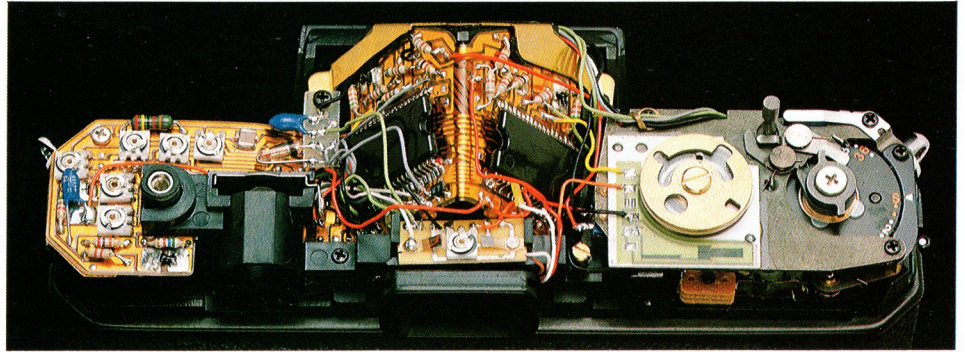
A completely new automatic exposure system was developed for the Fujica AZ-1. Fuji calls it "Digital Shutter Speed Control." Mainly because this system is built around a real digital micro-computer. A thing possible only because of the recent development of I<sup>2</sup>L (Integrated-Injection Logic) LSI circuitry — a qualitative and quantitative improvement over previous LSI circuits. Use of this advanced electronics technology has made the automatic exposure system of the AZ-1 the most accurate and reliable available today. Not only are exposure values uniformly accurate from darkest shadow to brightest sunlit scene, erratic electronic shutter performance is also prevented.



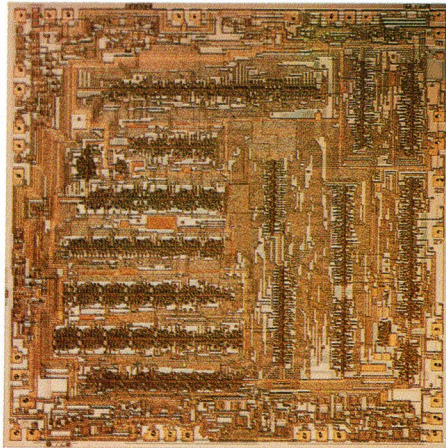
An improved type flexible printed circuit board that insures extreme reliability of operation.

### Centralized Control

"Digital Shutter Speed Control" is also fully operative even when the optional system accessories are used. For example, the Fujica Auto Winder and Fujica Auto Strobe AZ. In other words, this system acts as a centralized control center for all camera operations.



The innards of the AZ-1's electronic brain: I<sup>2</sup>L LSI circuitry built on improved-type "flexible" circuit board.



An electron microphotograph of part of the 7000 separate elements in the new I<sup>2</sup>L LSI; one of the secrets of the accuracy and reliability of the AZ-1 AE system.

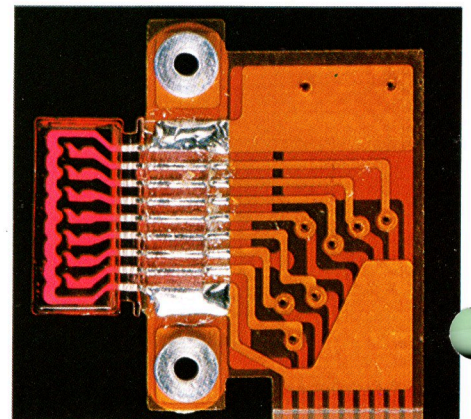
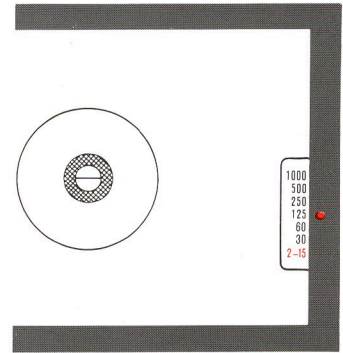
### LED Indication

In addition to the advanced electronics, the Fuji tradition of LED viewfinder indication has also been included. LEDs inside the AZ-1 viewfinder indicate shutter speeds in 7 ranges from 1/2 to 1/1000 second. The Fujica ST-801 was the first camera in the world to use LED indication of shutter speeds and the Fujica ST-901 was the first to feature LED digital display.

With the AZ-1, one of the LEDs lights to indicate the shutter speed range in use when the shutter release is lightly depressed. If desired, the lens aperture can then be varied so the camera's electronic

brain will change the shutter speed accordingly.

LEDs are extremely durable and shock resistant. And also offer the advantage of clear visibility, even in total darkness. The LED indicator of the AZ-1 also serves as over- and under-exposure warning as well as battery checker.



A close-up view of the 7 LEDs used in the right side of the viewfinder to indicate shutter speed ranges.

## Full-aperture and Stop-down Metering

The exposure system of the Fujica AZ-1 features quick-acting silicon photo cells for instant response to changing light conditions. It also provides two types of metering. Both automatic. Full-aperture metering is possible with all Fujinon lenses designed for that purpose. And automatic stop-down metering is possible with other Fujinon lenses as well as all other Praktika screw-mount lenses with that capability. This means extra convenience, because automatic exposure is available anytime. Even when using optional system accessories such as the bellows attachment for shooting close-ups. Or when using the microscope adapter for making large-magnification microphotographs.

You get the full benefit of automatic exposure whatever type of photographs you take.

## AE Lock and Fractional Exposure Control

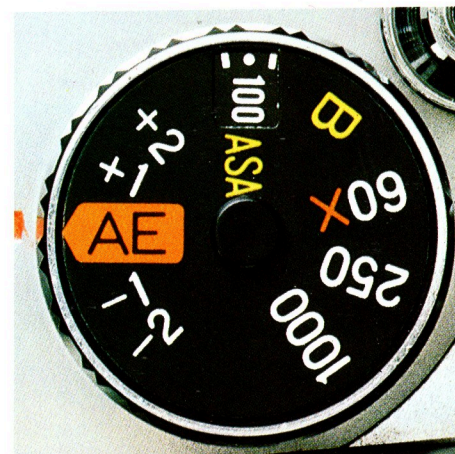
Although the computerized "Digital Shutter Speed Control" system easily handles almost any light condition, there are times when the photographer wants to make individual adjustments. For such purposes, the AZ-1 includes an AE (Automatic Exposure) lock and "Fractional Exposure Control."

The AE lock is a highly useful feature for a wide range of situations. Such as when shooting backlit or sidelit subjects. The photographer merely moves in close to take an exposure reading of the subject alone, then presses the AE lock and moves back into position to shoot. The result is a perfectly exposed picture of the subject in spite of the effect of the lighting.

"Fractional Exposure Control" allows the photographer to compensate the automatic exposure value by as much as 2 full f-stops, plus or minus. This feature has many applications in difficult light conditions. Or for control of tonal rendition as well as for special effects at the will of the photographer.

## Manual Override

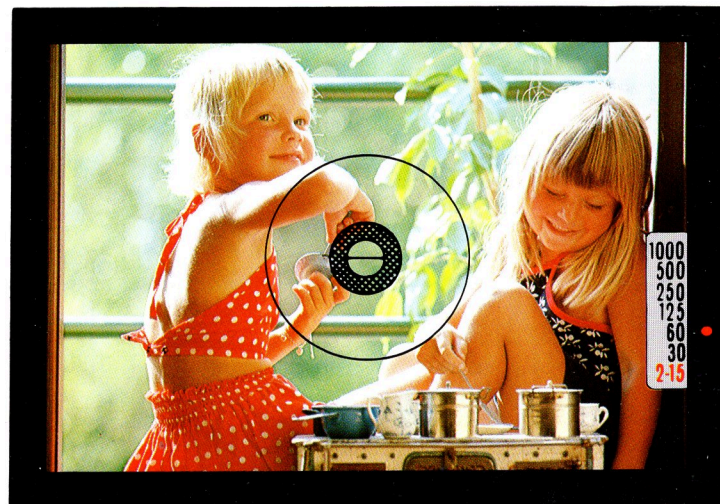
To be sure of always getting pictures under any condition, the AZ-1 also includes a manual override of the electronic shutter. In case the batteries should fail due to exhaustion or cold weather, the photographer can switch to the mechanical manual override. Shutter speeds of B, 1/60, 1/250 and 1/1000 second are sufficient to handle almost any situation satisfactorily until the batteries can be replaced.



Fractional exposure control/Manual shutter speed/Film speed dial.



This photo was taken without using AE lock.



See the difference when the AE lock is used under the same circumstances.

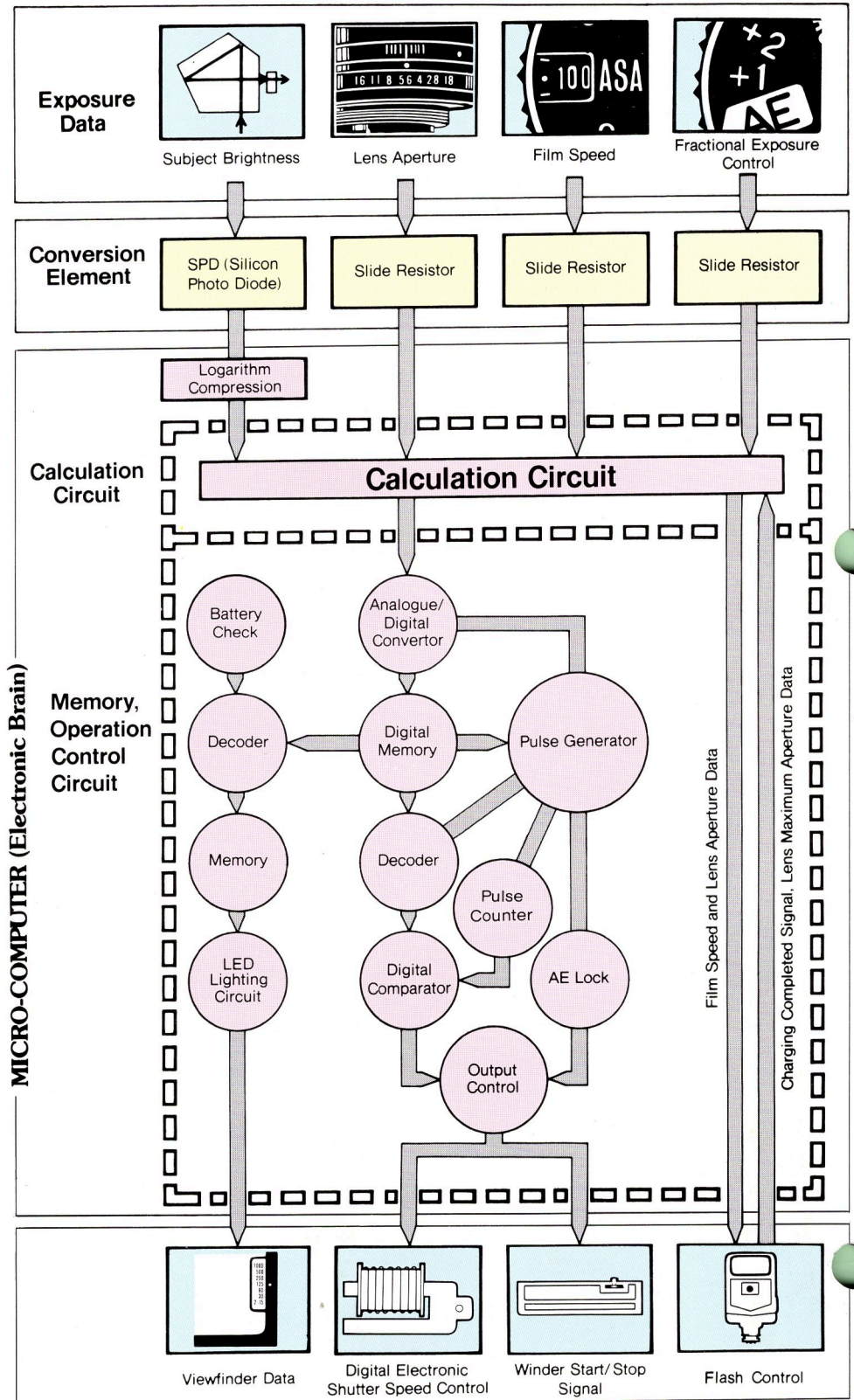


# Micro-computer Determines Exposures Accurately

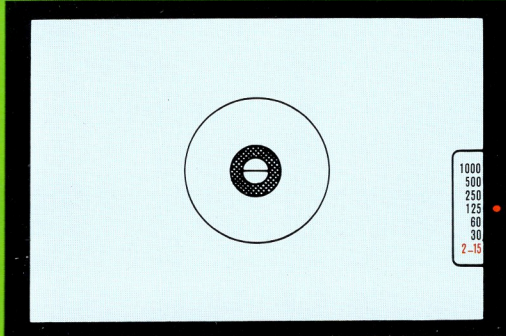
The I<sup>2</sup>L circuitry, actually a micro-computer, used in the Fujica AZ-1 is divided into two major components. One is the calculation circuit that accurately determines exposure times using data such as subject brightness, lens aperture and film speed as well as Fractional Exposure Control data when that feature is used. The other component comprises the memory and operation control circuit that also indicates shutter speed ranges by means of 7 LEDs inside the viewfinder.

This memory and operation control circuit is made up of the most accurate, most reliable digital circuit available today. Just as accurate pulses from a crystal oscillator element have spectacularly increased the accuracy of watches, the pulses generated by the Pulse Generator built into the AZ-1 micro-computer are used for more precise control of the digital circuits (Analogue/Digital Converter, Decoder, Digital Memory, Decoder, Digital Comparator) so the AE system of the AZ-1 is highly reliable even with temperature changes, noise, vibration, etc.

## Block Diagram of Electronic Control System

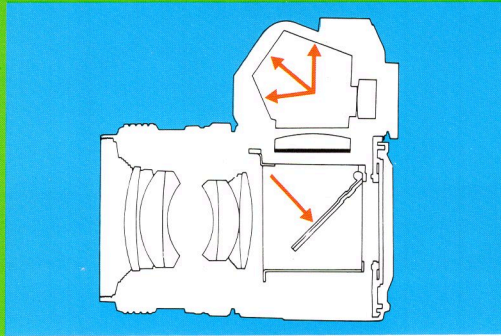


# Every Part of The FUJICA AZ-1 is Made With Loving Care



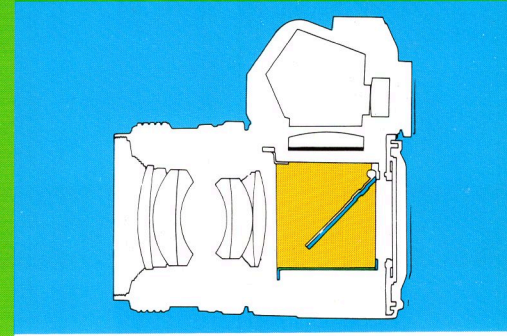
## Convenient 3-way Focusing

The Fujica AZ-1 viewfinder features 3-way focusing. You can choose split-image, microprism or ground glass. Or use all three. This combination allows quick handling of any situation.



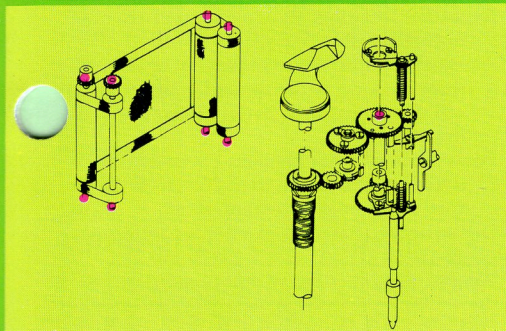
## Extra Bright Viewfinder

Surface treatment of the mirror and silvering of the pentaprism make the AZ-1 viewfinder extremely bright. Focusing is easier under poor light conditions. And subjects can be easily evaluated through the viewfinder.



## Anti-flare Internal Baffling

The insides of the lens barrel, camera body and even the mirror back are fully coated with a special black flocking material. This prevents stray reflections reaching the film surface, even in strong backlighting.



## Durable Shutter Construction

Special oil-less metal is used in the essential moving parts of the AZ-1 shutter mechanism. This lengthens the shutter service life considerably and also assures precise operation even under extreme cold conditions.



## Smooth Acting, Short-stroke Film Advance Lever

With a winding angle of only 140°, the operation of the film advance lever is extremely fast. And the action is smooth. A large stand-off angle puts the lever right where you want it. Yet it folds flush when not in use.



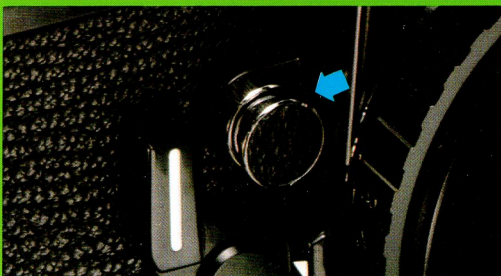
## Shutter Release Button Safety Lock

This useful button flips easily into position to prevent inadvertently tripping the shutter. So you can carry the AZ-1 safely with the shutter cocked and ready for action. When ready, just flip the lock off and shoot.



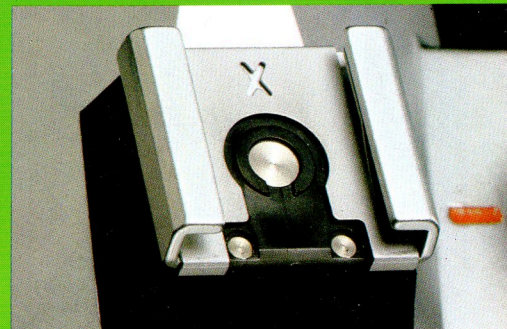
## Lockable Praktika Screw Lens Mount

Unlike with other screw-mount cameras, most Fujinon lenses can be locked securely into position. No more worry about lenses coming loose while busy taking pictures. And any Praktika screw-mount lens can be used.



## Depth of Field Preview Button

Depth of field can be checked before making an exposure by depressing this button. Focusing accuracy is greatly increased for critical situations. And automatic stopdown metering is possible with other Praktika screw-mount lenses by pressing this button.

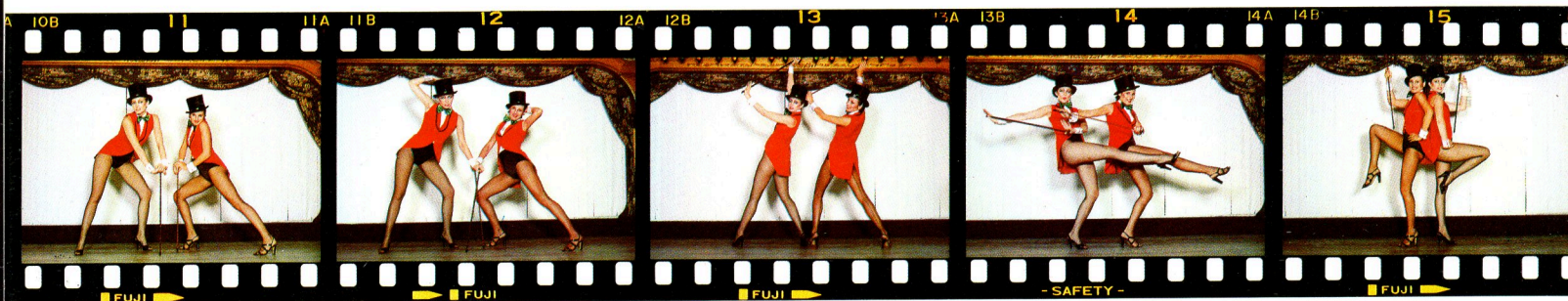


## Built-in Flash Hot-shoe

This newly designed hot-shoe greatly simplifies flash photography. When the Fujica Auto Strobe AZ is clipped on, it is automatically controlled through the hot-shoe contacts by the micro-computer of the camera.

# AUTO WINDER

A New Look At Life -  
With Rapid-fire Capability!



The Fujica Auto Winder is light and unobtrusive. It fits snugly to the bottom of the camera. And there is no separate release button in an unaccustomed position to confuse you. The camera shutter release also operates the Auto Winder. With this optional accessory in position, you'll get a new look at life. You'll find a new world of action where sequences of movement can be captured with amazing ease.

Sequence exposures can be made at a rate of up to 2 frames per second. Each time you press the

shutter release the Auto Winder winds the film, cocks the shutter and advances the exposure counter. All automatically. And the AE system keeps exposures correct even if light conditions vary during a sequence.

Fujica Auto Winder attaches to the AZ-1 body easily. Just put it into position and turn the knurled knob to lock into place. All camera operations are possible with the winder in position. You can load or unload film, change batteries and even wind the film manually.

## FUJICA AUTO WINDER Specifications

**Winding Speed:** About 0.5-sec. per frame.

**Operation:** Activated by the shutter release button of the camera.

**Shutter Speed Coupling Range:** Whole shutter speed range of AZ-1 camera (B, 1/2 - 1/1000-sec.)

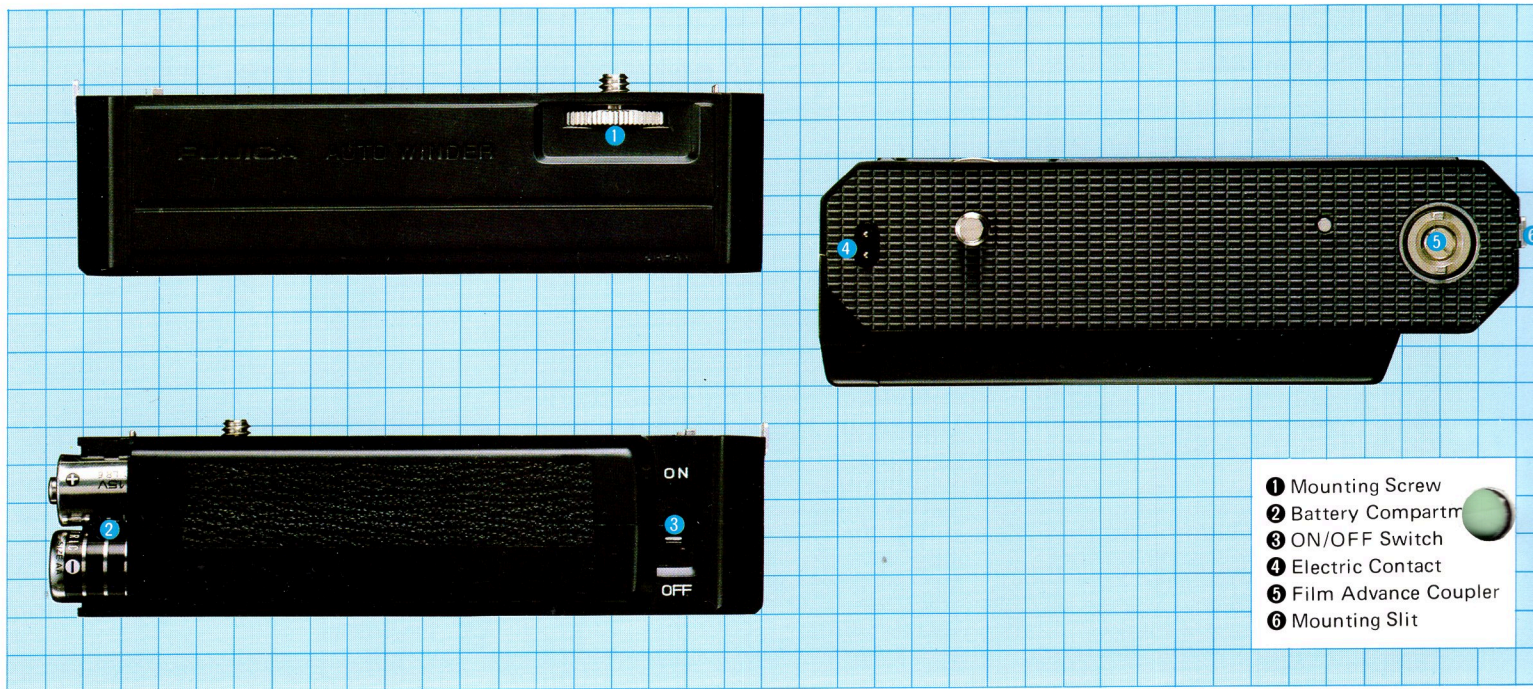
**Exposure Counting:** By the exposure counter of the camera.

**Automatic Cutoff Circuit:** Automatically stops winding at the time of completion of roll of film or when battery power is insufficient.

**Power Source:** Four penlight batteries (AA size); good for more than 20 rolls of 36-ex. film under normal temperatures.

**Dimensions:** 133(W) x 34.5(H) x 43.4(D)mm (5-15/64 x 1-11/32 x 1-11/16 in.)

**Weight:** 274g (9.7 oz) without batteries.



- 1 Mounting Screw
- 2 Battery Compartment
- 3 ON/OFF Switch
- 4 Electric Contact
- 5 Film Advance Coupler
- 6 Mounting Slit



# AUTO STROBO

## The Automatic Way To Beautiful Flash Pictures



Now you too can take beautiful flash pictures every time — automatically! Just make one simple setting when attaching the new Fujica Auto Strobo AZ to the AZ-1 body. After that, all operations are exactly the same as for non-flash photography. Strobo AZ automatically measures the subject distance and supplies just the right amount of light for correct exposure.

### Automatic Convenience

Fujica Auto Strobo AZ clips easily to the hot-shoe on the top of the pentaprism housing. When the unit is fully charged, an electronic sensing circuit turns on the pilot lamp and sets the camera shutter to the flash synch speed (1/60) via the camera's electronic brain. This is indicated by one of the LEDs lighting. As an extra convenience, the camera continues automatic operation until the flash is fully charged. Thus, you never miss a shot even when the flash is not yet charged.

### FUJICA AUTO STROBO AZ Specifications

**Type:** Electronic flash with series circuit for automatic light control.

**Camera Contact:** Special contact for clip-on mounting with provision for locking.

**Guide Number:** 17 (ASA 100-meter) 30 sec. after ready lamp turns on.

**Light Angle:** 42° vertically and 59° horizontally; provides coverage for 35mm format with 35mm lens.

### Automatic Sensing To ASA400

Another big feature is that Auto Strobo AZ automatically senses the camera film speed setting to ASA400 (27 DIN) and adjusts the flash output to match. With ASA400 film you can take flash pictures from 1.0 to 12 meters (3.4 to 40 feet) at f/2.8. Double the 0.5 to 6 meters (1.7 to 20 feet) possible with ASA100 (21 DIN) films. So you get full advantage of high-speed films.

### Automatic Operation At Any Aperture

The Auto Strobo AZ synchronizes automatically at any lens aperture. So the photographer can use selective focus at full aperture, sharp focus throughout the field by stopping down, or any stage in between. And the ability to shoot at large aperture extends the flash range to include subjects at greater distances.

### Short Recycle Times

Energy saving is another big advantage with this unit. Except when shooting at maximum range, Strobo AZ uses only the required amount of energy. The energy saved is kept for the next flash so the closer the subject the faster the recycle time. At close range, recycle times of less than 1 second are possible. Great for continuous flash photography.

**Recycling Time:** 7 sec. with AM-3 (alkali-manganese) batteries.

**Number of Flashes:** 300 with AM-3 (alkali-manganese) batteries.

**Light Quality:** Daylight

**Light Range:** F:2.8, ASA 100 (21 DIN) film: 0.5–6m (1.7–20ft)

F:2.8, ASA 400 (27 DIN) film: 1.0–12m (3.4–40ft)

F:5.6, ASA 100 (21 DIN) film: 0.5–3m (1.7–10ft)

F:5.6, ASA 400 (27 DIN) film: 1.0–6m (3.4–20ft)



- 1 Flash Reflector
- 2 Sensor
- 3 Aperture Set Dial
- 4 Pilot/Test Lamp
- 5 Auto/Manual/OFF Switch

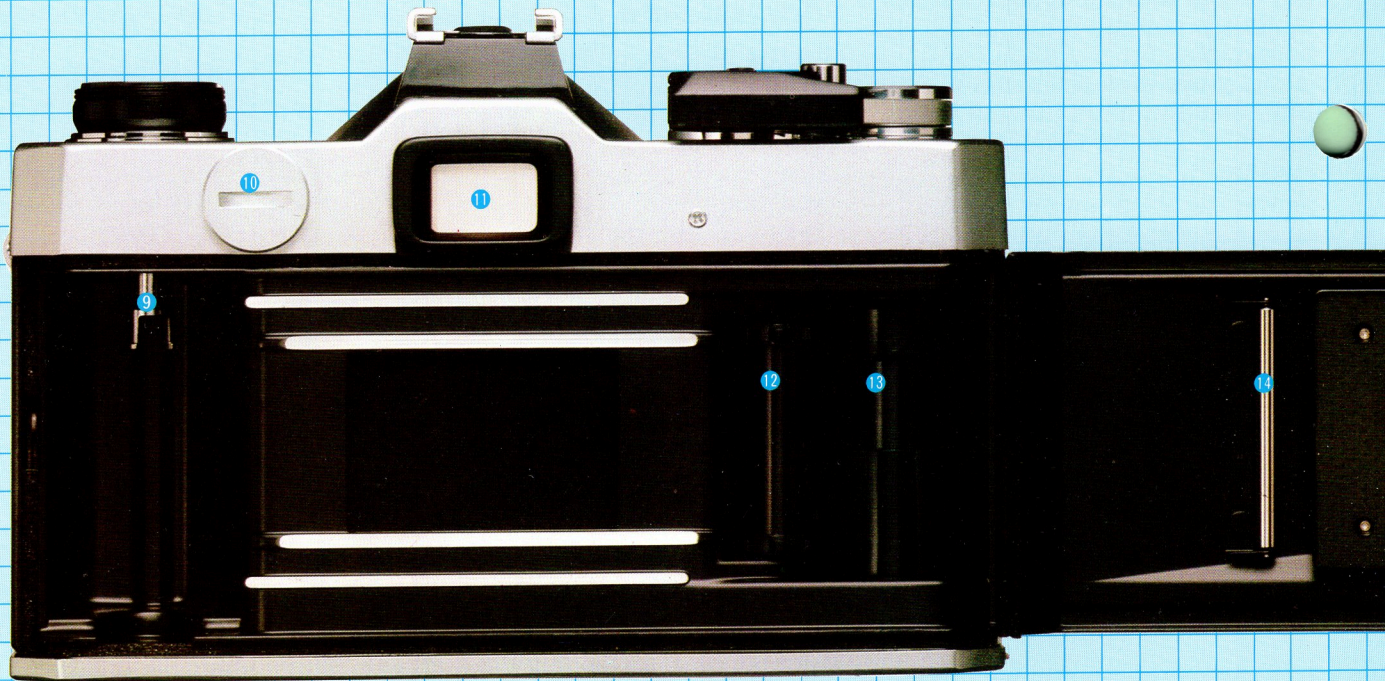
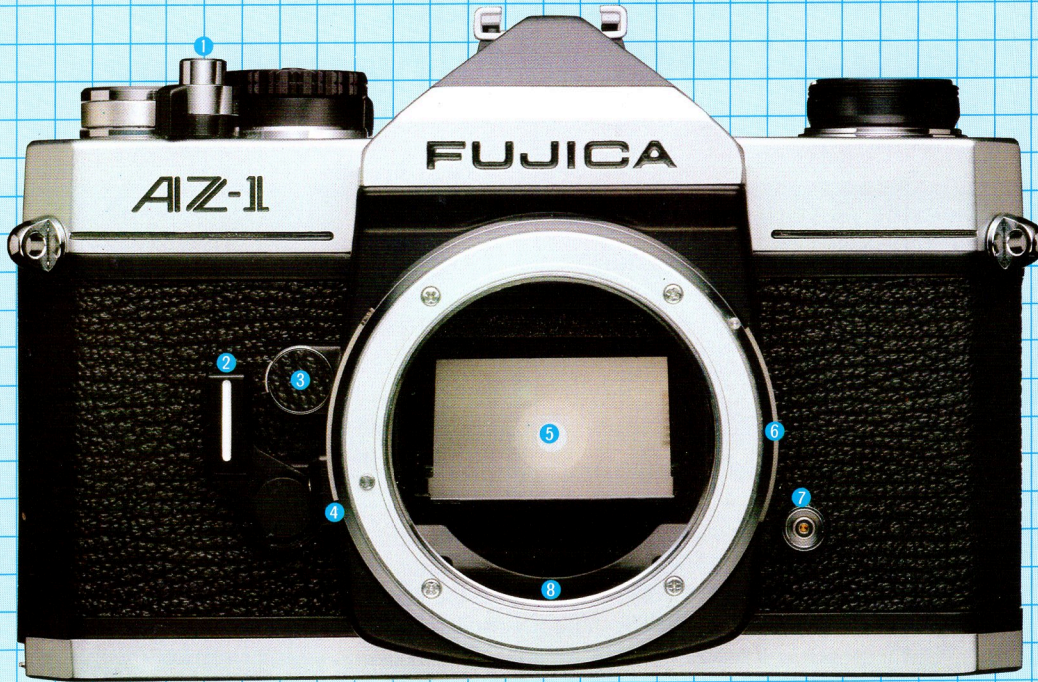
**Camera Interlocking:** The camera's shutter speed automatically switches to 1/60 sec. when the ready lamp turns on. However, the flash will not discharge and the camera will remain on automatic until the ready lamp turns on.

**Film Speed:** ASA 25 – 800; light range will automatically adjust to the film speed setting.

**Power Source:** Four penlight batteries.

**Others:** Flash check button and socket for special sync cord.

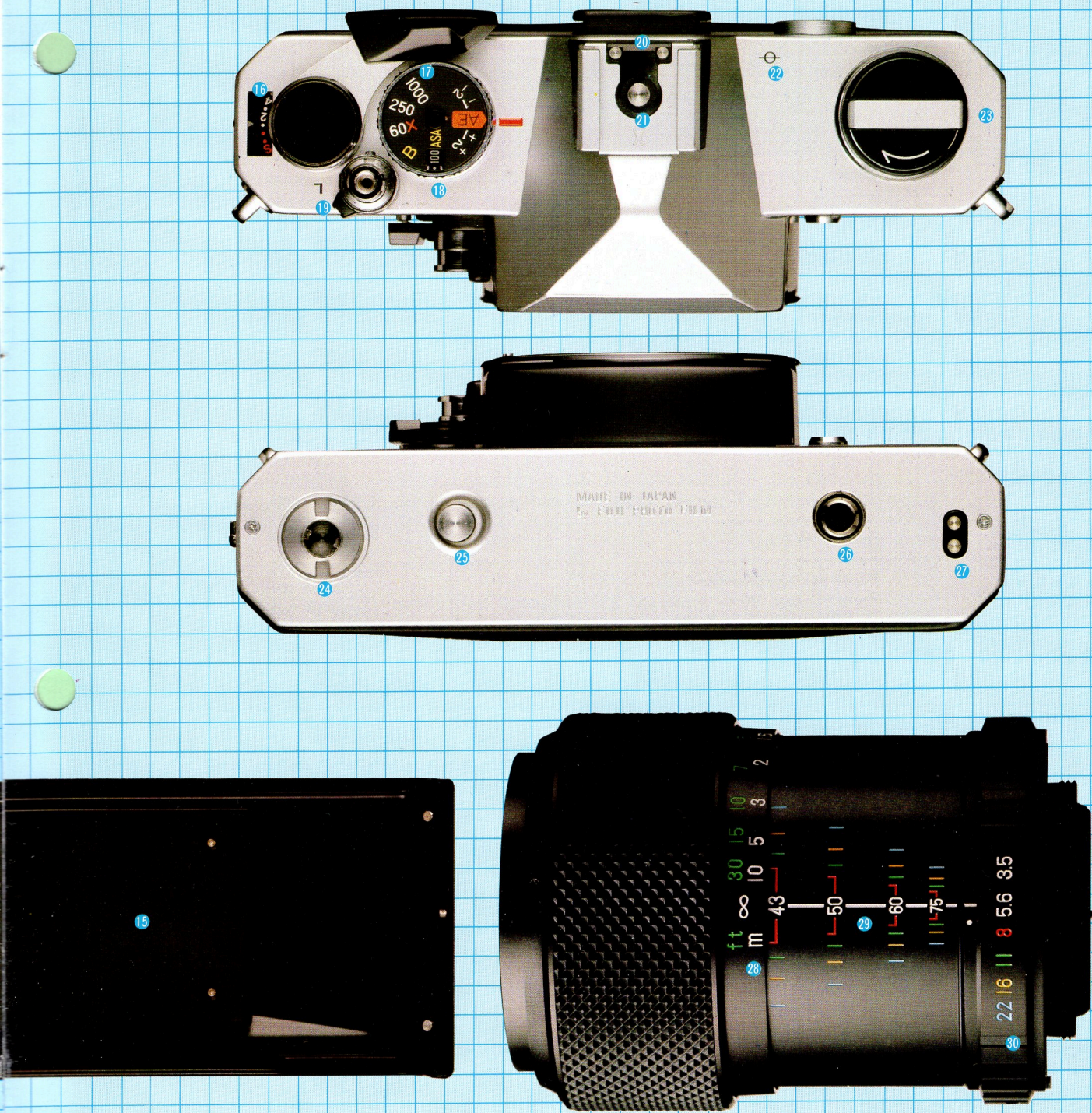
## Parts Identifications



- ① Shutter Release Button
- ② Self-timer Lever
- ③ Depth-of-Field Button
- ④ Lens Safety Lock
- ⑤ Quick-return Mirror

- ⑥ Aperture Information Ring
- ⑦ Sync Socket (X-contact)
- ⑧ Aperture Activating Plate
- ⑨ Take-up Spindle
- ⑩ Battery Chamber

- ⑪ Viewfinder Eyepiece
- ⑫ Sprocket Wheel (Teeth)
- ⑬ Take-up Spool
- ⑭ Film Pressure Roller
- ⑮ Film Pressure Plate



- |                                    |                           |                          |
|------------------------------------|---------------------------|--------------------------|
| 16 Exposure Counter                | 21 Hot-shoe               | 26 Tripod Socket         |
| 17 Shutter Speed Selector          | 22 Film Plane Mark        | 27 Auto Winder Connector |
| 18 ASA Speed Selector              | 23 Film Rewind Knob/Crank | 28 Distance Scale        |
| 19 Safety Lock                     | 24 Auto Winder Connector  | 29 Focal Length Scale    |
| 20 Contact for Fuji Auto Strobe AZ | 25 Film Rewind Button     | 30 Aperture Ring         |

## FUJICA AZ-1 Specifications

<b>Type:</b>	35mm single-lens-reflex automatic exposure camera with focal plane shutter.
<b>Film:</b>	Cartridge-packed 35mm roll film.
<b>Picture Size:</b>	24 x 36mm
<b>Standard Lens Options:</b>	Fujinon-Z 43-75mm f/3.5-4.5, Fujinon 50mm f/1.4, Fujinon 55mm f/1.8
<b>Lens Mount:</b>	Praktica screw mount with lens lock. 45.5mm flange back.
<b>Shutter:</b>	Cloth focal plane shutter. Electronically controlled shutter speed: 1/2-1/1000-sec. Manual mechanical shutter speed: B, 1/60, 1/250, and 1/1000-sec. Shutter release button with safety lock also serves as exposure meter switch.
<b>Flash Synchronization:</b>	Hot-shoe with X-contact (provides automatic flash control with optional Fujica Auto Strobo AZ) and X-contact terminal on body front. 1/60-sec. flash synchronization.
<b>Self-timer:</b>	8-sec. interval.
<b>Viewfinder:</b>	Fixed eye-level pentaprism. Field of view: 90% vertical and 92% horizontal (with 55mm f/1.8 lens) Magnification: 0.96X (with 55mm f/1.8 lens) Indication: LED and scale shutter speed indication. Mirror: Quick return. Focusing: Three-way (split-image, microprism, ground glass) Depth of field preview: button provided.
<b>Exposure Control:</b>	Aperture priority automatic exposure control. Exposure meter: Through-the-lens, center-weighted averaging exposure meter; full aperture metering with Fujinon lenses with meter coupling pin; stopped-down metering with other lenses. Light receptor: Silicon photodiode. Metering range: EV2-18 (ASA 100, 50mm f/1.4 lens) Film speed range: ASA 25-3200 (in increments of 1/3 steps) AE lock: Pressing halfway down shutter release button memorizes and holds exposure reading. Fractional exposure control: +2, +1, -1 and -2 stops.
<b>Film Loading:</b>	Easy loading with multi-slot take-up spool.
<b>Film Advance:</b>	Single stroke lever, 140° winding angle.
<b>Automatic Film Advance:</b>	Optional Fujica Auto Winder winds film automatically.
<b>Exposure Counter:</b>	Automatic reset additive type.
<b>Film Rewind:</b>	Rewind button and crank.
<b>Battery:</b>	Three 1.5V silver oxide batteries (Mallory MS-76, Eveready S-76).
<b>Dimensions:</b>	133(W) x 89(H) x 50.3(D)mm (body only) (5-15/64 x 3-1/2 x 1-31/32 in.).
<b>Weight:</b>	575g (20.3 oz) body only. 782g (27.6 oz) with 55mm f/1.8 lens.

\* The above specifications and minor outward features are subject to alteration without notice to permit improvements to be made, when called for, without delay or inconvenience.

## The Full Range of FUJINON LENSES

	Name of Lens	Composition	Angle of view	Minimum focus	Aperture	Aperture control	Filter size (dia.)	Dimensions (dia. x l)	Weight
WIDE ANGLE	EBC FUJINON-SW 19mm f/3.5	8-11	95°55'	0.3m	3.5-22	Automatic	72mm	66 x 48mm (2-3/4" x 1-15/16")	264g (9.24 oz)
	EBC FUJINON-W 24mm f/2.8	8-9	84°	0.3m	2.8-16	Automatic	49mm	59 x 43.4mm (2-11/32" x 1-13/32")	175g (6.17 oz)
	EBC FUJINON-W 28mm f/3.5	7-7	74°	0.4m	3.5-16	Automatic	49mm	60.8 x 38.5mm (2-5/12" x 1-1/2")	184g (6.44 oz)
	EBC FUJINON-W 35mm f/1.9	6-8	62°44'	0.4m	1.9-16	Automatic	49mm	60 x 48mm (2-3/8" x 1-15/16")	230g (8.05 oz)
	EBC FUJINON-W 35mm f/2.8	6-7	62°36'	0.4m	2.8-16	Automatic	49mm	60.8 x 44mm (2-5/12" x 1-3/4")	185g (6.48 oz)
	FUJINON-W 35mm f/3.5	4-4	63°24'	0.4m	3.5-16	Automatic	49mm	58.3 x 37.2mm (2-5/16" x 1-7/16")	140g (4.94 oz)
NORMAL ANGLE	EBC FUJINON 50mm f/1.4	6-7	45°22'	0.45m	1.4-16	Automatic	49mm	63.5 x 43.5mm (2-1/2" x 1-11/16")	270g (9.45 oz)
	FUJINON 50mm f/1.4	6-7	45°22'	0.45m	1.4-16	Automatic	49mm	63.5 x 43.5mm (2-1/2" x 1-11/16")	270g (9.45 oz)
	EBC FUJINON 55mm f/1.8	4-6	42°10'	0.45m	1.8-16	Automatic	49mm	60.8 x 42mm (2-5/12" x 1-5/8")	200g (7.00 oz)
	FUJINON 55mm f/1.8	4-6	42°10'	0.45m	1.8-16	Automatic	49mm	60.8 x 42mm (2-5/12" x 1-5/8")	200g (7.00 oz)
	FUJINON 55mm f/2.2	4-4	42°10'	0.6m	2.2-16	Automatic	49mm	61.0 x 36mm (2-5/12" x 1-5/12")	150g (5.25 oz)
TELEPHOTO	EBC FUJINON-T 100mm f/2.8	4-5	24°24'	1.2m	2.8-22	Automatic	49mm	61 x 60mm (2-1/2" x 2-3/8")	254g (8.99 oz)
	EBC FUJINON-T 135mm f/2.5	4-5	18°09'	1.5m	2.5-22	Automatic	58mm	66.5 x 80mm (2-5/8" x 3-1/8")	432g (15.02 oz)
	EBC FUJINON-T 135mm f/3.5	4-4	18°13'	1.5m	3.5-22	Automatic	49mm	59.8 x 79mm (2-5/16" x 3-1/8")	300g (10.50 oz)
	EBC FUJINON-T 200mm f/4.5	5-5	12°20'	2.5m	4.5-22	Automatic	49mm	63.5 x 133mm (2-1/2" x 5-1/4")	489g (17.12 oz)
	EBC FUJINON-T 400mm f/4.5	4-5	6°11'	8m	4.5-45	Manual	49mm	101 x 289.5mm (4" x 11-5/8")	1,925g (67.38 oz)
	EBC FUJINON-T 600mm f/5.6	4-5	4°07'	12.5m	5.6-45	Manual	49mm	121 x 439.5mm (4-3/4" x 17-9/32")	3,000g (105.00 oz)
ZOOM	FUJINON-Z 43-75mm f/3.5-4.5	7-7	53°30'~32°6'	1.2m	3.5-22	Automatic	49mm	62.7 x 60.4mm (2-15/32" x 2-6/16")	300g (10.50 oz)
	EBC FUJINON-Z 75-150mm f/4.5	9-12	32°16'~16°23'	1.8m	4.5-22	Automatic	62mm	72.8 x 143mm (2-7/8" x 5-5/8")	748g (26.18 oz)
	EBC FUJINON-Z 54-270mm f/4.5	12-15	43°43'~9°11'	2.5m	4.5-22	Automatic	82mm	90 x 220.5mm (3-1/2" x 8-7/8")	1,464g (51.24 oz)
FISH EYE	EBC FUJINON-FISH-EYE 16mm f/2.8	8-12	180°	0.25m	2.8-22	Automatic	Built-in	74.8 x 55.5mm (2-5/12" x 2-3/16")	425g (14.88 oz)
SOFT FOCUS	EBC FUJINON-SF 85mm f/4	4-4	28°34'	1m	4-16	Automatic	49mm	63.5 x 64.5mm (2-1/2" x 2-5/8")	285g (10.05 oz)
MACRO	EBC FUJINON-MACRO 55mm f/3.5	4-5	42°45'	0.241m	3.5-32	Automatic	49mm	63.5 x 51.5mm (2-1/2" x 2-1/32")	205g (7.18 oz)

Note: Lenses designated EBC are Electron Beam Coated, a special Fuji process to virtually eliminate ghost and flare.

## Trio of High Quality Fuji Color Films



**FUJICOLOR F-II 400**  
(for color prints)  
ASA400/27DIN  
(Daylight or blueflash)



**FUJICOLOR F-II**  
(for color prints)  
ASA100/21DIN  
(Daylight or blueflash)



**FUJICHROME R100**  
(for color slides)  
ASA100/21DIN  
(Daylight or blueflash)



**FUJI FILM**

**FUJI PHOTO FILM CO., LTD.**

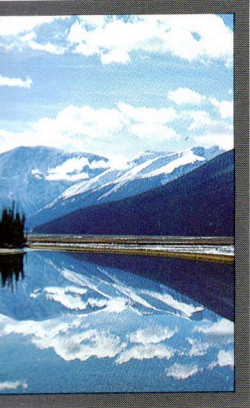
26-30, Nishiazabu 2-chome, Minato-ku, Tokyo 106, Japan.

<Fuji Film Abroad>

- In North America** **FUJI PHOTO FILM U.S.A., INC.**  
350 Fifth Ave., New York, N.Y. 10001, U.S.A.  
**FUJI PHOTO FILM HAWAII, INC.**  
Pacific International Bldg., Suite 217  
677 Ala Moana Blvd., Honolulu, Hawaii 96813, U.S.A.
- In Europe** **FUJI PHOTO FILM (EUROPE) G.m.b.H.**  
4 Düsseldorf 1, Postfach 3204,  
Berliner Allee 8, West Germany  
**FUJI PHOTO FILM (U.K.) LTD.**  
99 Baker Street, London, W1M 1FB, England
- In South America** **FUJI PHOTO FILM DO BRASIL LTDA.**  
Caixa Postal 9959, Rua Major Diogo, 128, CEP 01. 324,  
São Paulo, Brazil
- In Asia** **FUJI PHOTO FILM CO., LTD., HONG KONG OFFICE**  
24th Floor, Melbourne Plaza  
No. 33, Queen's Road, Central, Hong Kong  
**FUJI PHOTO FILM CO., LTD., SINGAPORE OFFICE**  
Unit 537, 5th Floor, Plaza Singapura, 68, Orchard Road, Singapore, 9  
**FUJI PHOTO FILM CO., LTD., BANGKOK OFFICE**  
K & Y Bldg., 2nd Floor, 16 Surasak Road, Bangkok, Thailand  
**FUJI PHOTO FILM CO., LTD., TAIPEI OFFICE**  
Rm. 501 Hung Chong Bldg., No. 20, Chiling Road, Taipei, Taiwan  
**FUJI PHOTO FILM CO., LTD., SEOUL OFFICE**  
Mee Wha Building, 30-1, Mukjong-dong, Chung-ku, Seoul, Korea

# The Entire Range From Wide-angle Telephoto With One Lens!

# Zoom C For Sp



position the Fujinon-Z  
angle lens. Scenic views  
have a feeling of greater  
is range is also great for  
e family into one shot.



For sports action you can zoom all the way to capture those exciting moments forever. Or you can photograph the whole scene at the wide-angle range. Whichever part of the zoom range you use, you'll always be ready for whatever comes next.



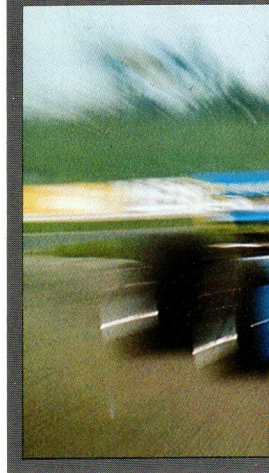
e standard focal length  
aking pictures of  
in groups or singles, the  
Although the  
5mm zoom covers  
andard lens range, it is  
rier. Convenience is  
use anywhere.



The telephoto range also makes possible selective focusing. You can isolate any part you want when photographing animals, flowers and other subjects from nature. Such effects are easy with the Fujinon-Z zoom.



Another possibility in the telephoto range is portraits. This range gives a pleasing natural effect when shooting people. Proportions are reproduced with lifelike realism. There is no distortion due to the focal length being too short.



The zoom ratio of ne  
For example, a feeling o  
shooting. Great for sport



Another zoom effect  
subject. Many effects su  
speeds while shooting.



Many interesting varia  
night lights gives especia  
with the great new Fujin