

# Tele-Rolleiflex

## A Particular Favorite With Portrait & Editorial Photographers

The Tele-Rolleiflex gives traditional Rollei performance in a semi telephoto camera. The 135mm f/4 Zeiss Sonnar lens has a 33 degree angle of view. For applications needing magnification with critically sharp negatives, the Tele-Rolleiflex is ideal. Available in two models: One to accept No. 120 film only; one to accept both No. 120 and No. 220 film for 12 and 24 exposures 2¼ x 2¼ respectively.

The camera has automatic parallax compensation at all distances. Shutter speeds range from 1 to 1/500 second plus B with M and X flash synchronization at all speeds. The shutter and f/stop combinations may be coupled or uncoupled. There is an accessory exposure metering system which can be added. Depth of field is automatically indicated on the distance scale. Normal focusing range from in-

finity to 8½ feet; with Rolleinar 0.35 from 9¼ to 4½ feet; with Rolleinar 0.7 from 54 to 36½ inches—all ranges with full parallax correction.

A split image rangefinder wedge is centered in the viewing screen for faster focusing. The interchangeable focusing hood has a pop-up 2.5x magnifier for critical focusing and quickly converts to a sports finder for following action and permits eye-level focusing.

The Rolleikin 35mm adapter may also be used for 20 or 36 exposures 24 x 36 mm on No. 135 film with full parallax correction.

The Tele-Rolleiflex weighs 54 ounces and measures 5¾" x 4" x 5⅝".

**Use Bayonet Size III Accessories.**

TELE-ROLLEIFLEX 120 with 135mm f/4.0 Zeiss Sonnar lens, leather neck strap and lens cap without exposure meter—For No. 120 film ONLY.

**Cat. No. 570 090** (14614)

TELE-ROLLEIFLEX 120/220 as above but with facility for both No. 120 and No. 220 films.

**Cat. No. 570 290** (06859)

EVEREADY CASE for Tele-Rolleiflex 120 only.

**Cat. No. 970 550** (11633)

EVEREADY CASE for Tele-Rolleiflex 120/220.

**Cat. No. 960 440** (07074)

CLOSE-UP LENSES, ROLLEINAR 0.35 (9' 2" — 4' 5").

**Cat. No. 208 010** (11642)

CLOSE-UP LENSES, ROLLEINAR 0.7 (4' 6½" — 3' ½").

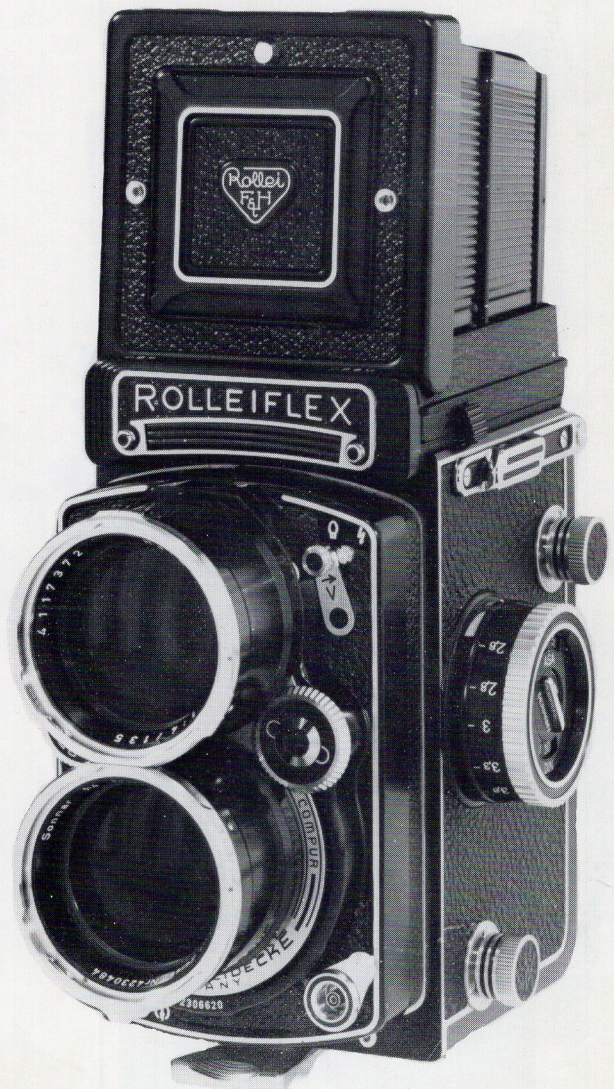
**Cat. No. 208 020** (11651)

EXPOSURE METER KIT for installation.

**Cat. No. 580 060** (10889)

LENS HOOD FOLDING, Bay. III.

**Cat. No. 203 000** (11369)



## The Established Professional Choice

The Rolleiflex 2.8F 120/220 and the 3.5F 120/220 are probably the most widely respected and frequently used cameras in the working world of professional photography.

The superb Schneider Xenotar lens provides needle sharp definition and excellent contrast from the center to the corners of the 2¼ x 2¼ negative at any aperture. The 2.8F 120/220 has the 80mm Xenotar f/2.8 while the 3.5F has the famous 75mm Xenotar f/3.5 lens.

The 2.8F 120/220 and the 3.5F 120/220 provide the ability to use the longer 220 roll film as well as the standard 120 roll film. Both cameras also accept the Rolleikin attachment so 35mm films in 20 or 36 exposures can be used. The 2.8F 120/220 and 3.5F 120/220 are provided with a Rolleiclear focusing screen which has

a 5/8" circular micro-prism in the center for quick focusing.

Both have a pop-up magnifying glass in the hood to facilitate critical focusing. The hood quickly converts to an eye-level sports finder to easily follow motion and also permits eye-level focusing. The cameras are provided with an automatic depth of field indicator as well as automatic parallax compensation at all distances down to less than one foot (with Rolleinars).

Both models have a shutter speed-lens opening coupled exposure meter built-in which uses match-needle control for proper exposures. The metering systems can be set for ASA ranges from 12 to 1600 and also has a filter factor control. Shutter speeds range from

1 second to 1/500 plus B. The shutters are synchronized for either M or X at all speeds. A self timer is also provided. The rapid wind crank in both models advances the film and cocks the shutter.

The famous Rollei film feeler mechanism in the "F" models "senses" the exact point at which the film is taped to the paper backing and accurately activates the exposure counter. While unintentional double exposures are prevented there is a provision to make intentional multiple exposures. The "feel" and balance of the F Rolleis and their unmatched dependability are the results of many years of experience in the hands of Europe's finest craftsmen.

**Rolleiflex 2.8F: Use Bay. Size III Accessories.**  
**Rolleiflex 3.5F: Use Bay. Size II Accessories.**

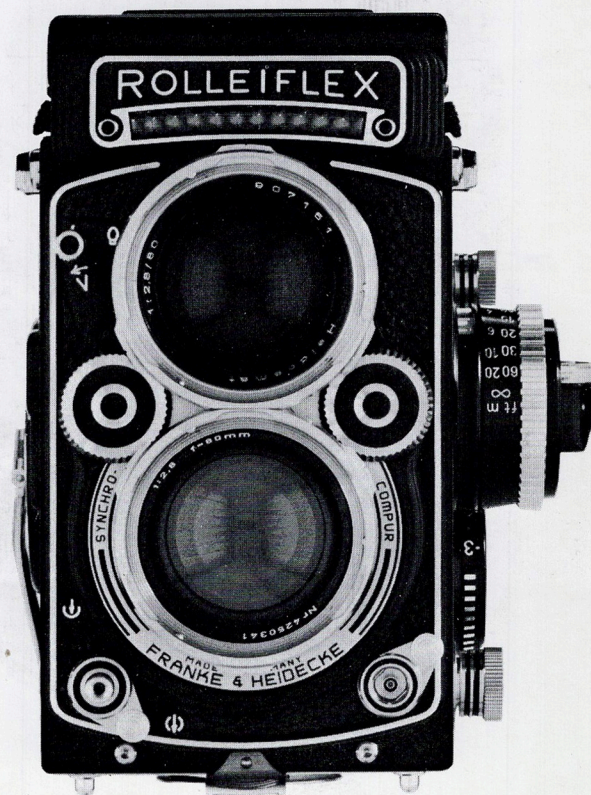
ROLLEIFLEX 2.8F/120-220  
**Cat. No. 570 410** (16221)

EVEREADY CASE for Rolleiflex 2.8F  
**Cat. No. 960 420** (15370)

ROLLEIFLEX 3.5F/120-220  
**Cat. No. 540 410** (16212)

EVEREADY CASE for Rolleiflex 3.5F  
**Cat. No. 960 400** (15361)

Rolleiflex 2.8F 120/220, 80mm Schneider Xenotar f/2.8, angle of view 53°, weighs 44 ounces and measures 5 7/8" by 4 3/8" by 4 1/8".



Rolleiflex 3.5F 120/220, 75mm Schneider Xenotar f/3.5, angle of views 56°, weighs 43 ounces and measures 5 7/8" by 4 3/8" by 4".



# Rolleiflex T

## A Favorite First For Amateurs, Back-Up Camera For Pros

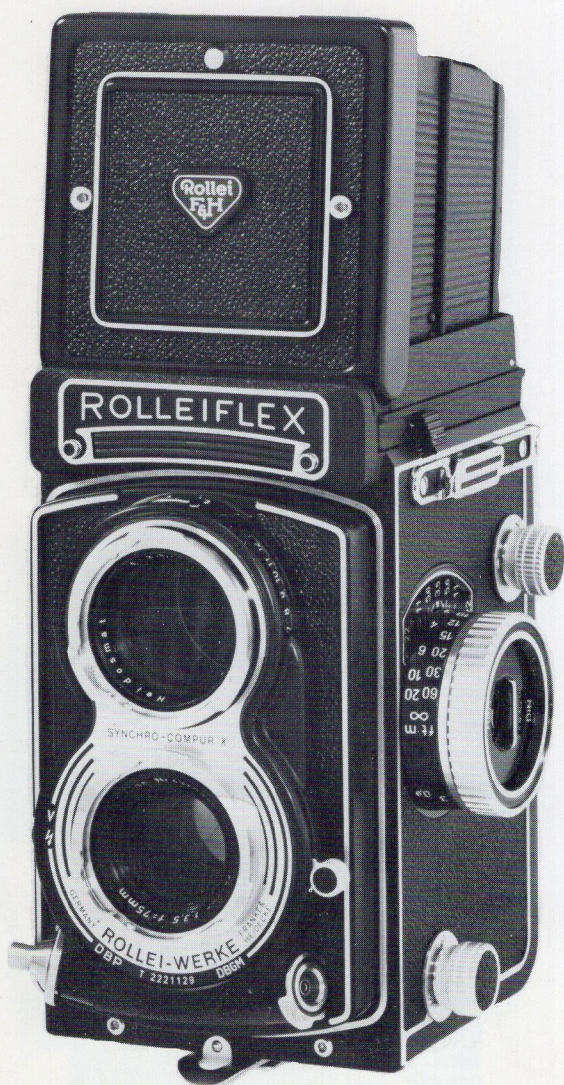
The Rolleiflex T offers a true Rolleiflex at an economical price and with several format options. With an optional mask set it can produce 16-1 $\frac{5}{8}$ " x 2 $\frac{1}{8}$ " exposures or 16-1 $\frac{5}{8}$ " x 1 $\frac{5}{8}$ " exposures on a roll of 120 film. Without the masks it gives the standard 12-2 $\frac{1}{4}$ " exposures on a 120 roll. All formats have full parallax correction and automatic exposure counting.

The famous 75mm Schneider Xenar f/3.5 lens is standard. Fast focusing is easy with the split image rangefinder wedge centered in the Rolleiclear focusing screen, viewed thru f/2.8 viewing lens. Size I bayonet mounts. The pop-up magnifier helps with critical focusing. The focusing hood with 2.5x magnifier also quickly converts to an eye level sports finder for following motion.

converts to an eye level sports finder for following motion.

The camera is prewired for installation of an exposure meter system; Exposure Meter Kit T. Shutter speeds range from 1 second to 1/500 second plus B with X synchronization at all speeds. The aperture and speed controls are operated by one convenient lever. The rapid wind crank advances the film and cocks the shutter simultaneously. There is a self-timer and depth of field scale, apertures f/3.5 to f/22. Unaided focusing range from infinity to 3 feet. The Rolleiflex T weighs 36 ounces and measures 6" x 4 $\frac{1}{2}$ " x 3 $\frac{3}{4}$ ".

**Use Bayonet Size I Accessories.**



ROLLEIFLEX T with 75mm f/3.5 Schneider Xenar lens, leather neck strap and lens cap, without exposure meter.

**Cat. No. 580 110** (10852)

EVEREADY CASE for Rolleiflex T.

**Cat. No. 960 320** (10870)

EXPOSURE METER KIT for installation

**Cat. No. 580 060** (10889)

16 EXPOSURE MASK SET (1 $\frac{5}{8}$ " x 2 $\frac{1}{8}$ " or 1 $\frac{5}{8}$ " x 1 $\frac{5}{8}$ ").

**Cat. No. 208 100** (10898)

# Rolleicord Vb

## A Favorite With Amateurs, Schools, Law Enforcement & Civil Agencies

The Rolleicord Vb is the most economical Rollei and features the most versatile format choice. Use of the optional exposure counter kits makes five different formats possible. Besides the standard 12-2 $\frac{1}{4}$ " x 2 $\frac{1}{4}$ " exposures; 16-1 $\frac{5}{8}$ " x 2 $\frac{1}{8}$ ", 16-1 $\frac{5}{8}$ " x 1 $\frac{5}{8}$ "; 24-1 $\frac{1}{8}$ " x 1 $\frac{5}{8}$ " or 24-1" x 1 $\frac{1}{2}$ " are possible. Parallax compensation and exposure counting are automatic for all formats including optional Rolleikin 35 Adapter for 24 x 36 mm exposures on No. 135 film, (see TLR accessories).

Focusing is quick with the split-image range-finder wedge in the center of the Rolleiclear screen. The interchangeable focusing hood has a pop-up magnifier for quick focusing and

quickly converts into a sports finder for the following action, taking lens 75mm Schneider Xenar f/3.5, four elements, angle of view 56°. Finder lens 75 mm Heidosmat f/3.2. Size I bayonet mounts. Hood has 2.5x magnifier.

Shutter speeds range from 1 second to 1/500 second plus B with X synchronization at all speeds. There is also a self-timer. Aperture range f/3.5 to f/22. Unaided focusing range: infinity to 3 feet.

The Rolleicord Vb weighs 33 ounces and measures 5 $\frac{1}{2}$ " x 4" x 4".

**Use Bayonet Size I Accessories.**

ROLLEICORD Vb with 75mm Schneider Xenar f/3.5 lens and lens cap.

**Cat. No. 530 010** (14535)

EVEREADY CASE for Vb and Va.

**Cat. No. 960 070** (10393)

NECK STRAP for Rolleicord.

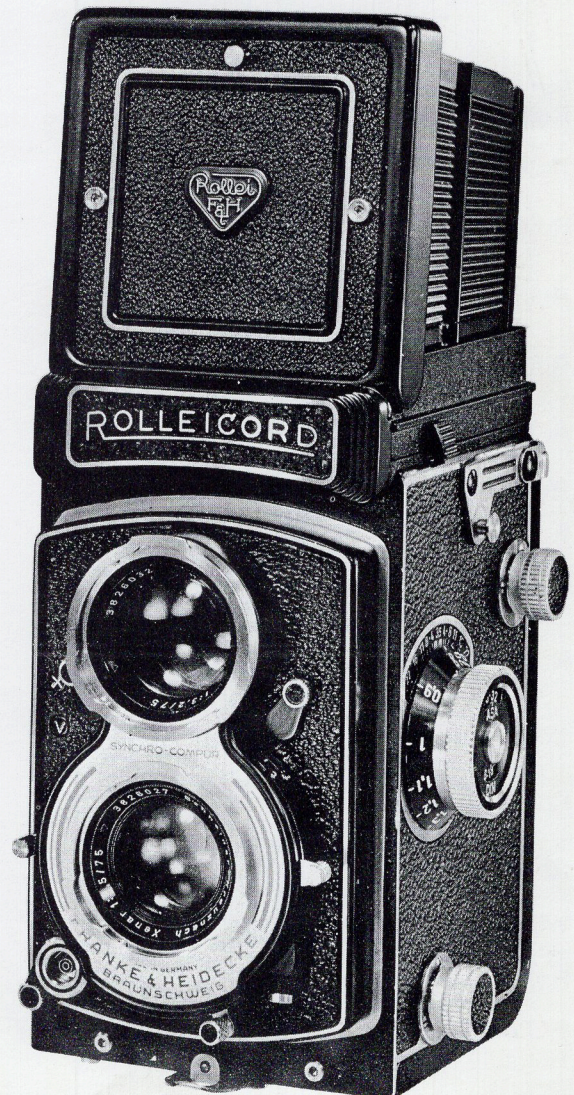
**Cat. No. 979 010** (10409)

16 EXPOSURE KIT (1 $\frac{5}{8}$ " x 2 $\frac{1}{8}$ " and 1 $\frac{5}{8}$ " x 1 $\frac{5}{8}$ ").

**Cat. No. 208 300** (10418)

24 EXPOSURE KIT (1 $\frac{1}{8}$ " x 1 $\frac{5}{8}$ " and 1" x 1 $\frac{1}{2}$ ").

**Cat. No. 208 500** (10427)



# Twin Lens Reflex

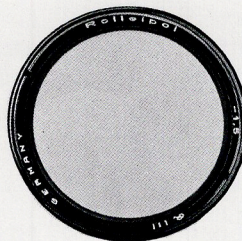
Rollei Models with Fixed Focusing Hood		Serial Numbers	Bayonet Size Introduced	
Rolleiflex 3.5	X Synch	1,100,000-1,169,999	I	1950
Rolleiflex 3.5	M-X Synch	1,200,000-1,427,999	I	1951
Rolleiflex 3.5	M-X, E-V Scale	1,428,000-1,499,999 1,700,000-1,737,911	I	1954
Rolleiflex 3.5E	b.i. Exp. Meter	1,740,000-1,869,999	II	1956
Rolleiflex 2.8A	2.8 Tessar X, M-X	1,101,000-1,204,999	II Spec. Hood	1950
Rolleiflex 2.8B	2.8 Biometer	1,204,000-1,260,000	III	1951
Rolleiflex 2.8C	2.8 Planar 2.8 Xenotar	1,260,350-1,299,999 1,444,000-1,475,405	III	1953
Rolleiflex 2.8D	E-V Scale	1,600,000-1,620,999	III	1955
Rolleiflex 2.8E	b.i. Exp. Meter	1,621,000-1,665,999	III	1956
Rolleicord III	X Synch	1,137,000-1,344,050	I	1950
Rolleicord IV	M-X Synch	1,344,051-1,390,999	I	1953
Rolleicord V	M-X, E-V Scale	1,500,000-1,583,999	I	1955
Rolleicord Va	5-format	1,584,000-1,599,999 1,900,000-1,943,999	I	1957
Rolleiflex 4x4	No. 127 film	2,000,000-2,099,999	I 4x4 Hood	1957
Rollei Models with Removeable Focusing Hood				
Rolleiflex 3.5E-2	1st Issue	1,870,000-1,872,999	II	59-60
Rolleiflex 3.5E-2	M-X, EV, Xenotar	2,480,000-2,482,999	II	1961
Rolleiflex 3.5E-3	M-X, EV, glass facility	2,380,000-2,385,034	II	1962
Rolleiflex 2.8E-2	MX, EV, glass facility	2,350,000-2,356,999	III	1959
Rolleiflex 2.8E-3	MX, EV, glass facility	2,360,000-2,362,024	III	1962
Rolleiflex T	New 3.5 Tessar	2,100,000-.....	I	1958
Rolleiflex 3.5F	Cross Cpld. meter	2,200,000-2,229,000	II	1959
Rolleiflex 3.5F	Coupled meter glass facility	2,230,000-2,249,999	II	1960
Rolleiflex 3.5F	Coupled meter glass facility	*2,250,000-2,815,050	II	1961
Tele Rolleiflex	4.0/135mm Sonnar glass facility	2,300,000-2,304,999	III	1959
Rolleiflex 2.8F	Coupled meter glass facility	2,400,000-2,451,850	III	1960
Rollei-Magic	Fully Automatic 3.5 Xenar	2,500,000-2,534,999	II	1960
Wide-Angle R'flex	4.0/55 Distagon	2,490,000-2,493,999	IV	1961
Rollei-Magic II	Fully Auto and EV Meter Manual	2,535,000-2,547,597	II	1962
Rolleicord Vb	5-format 3.5 Xenar	2,600,000-.....	I	1962
Rolleiflex 3.5F	Coupled meter	*2,815,051-.....	II	1969
Rolleiflex 2.8F	Coupled meter	2,451,851-.....	III	1969
Tele Rolleiflex	4.0/135 Sonnar	2,305,000-.....	III	1970

\*Use with Rolleimarin 4—Underwater Housing

### Rolleipol Polarizing Filter

For black & white or color, designed to eliminate or reduce reflections and glare from shiny, non-metallic objects and for filtering of blue sky. Particularly useful in controlling sky tone in color pictures.

Effects are predetermined by viewing the subject through the filter on the viewing lens and transferring the filter to the taking lens in the same position. Exposure compensation is 1½ stops.



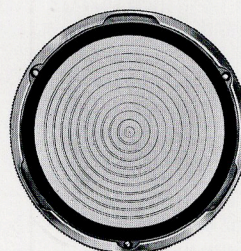
- ROLLEIPOL, Bayonet I **Cat. No. 201 300** (10597)
- ROLLEIPOL, Bayonet II **Cat. No. 202 270** (11101)
- ROLLEIPOL, Bayonet III **Cat. No. 203 240** (11509)

### Rolleisoft Diffusing Filters

For softening of definition for striking halo effects, effective for glamorizing portraits, particularly with back-lighted pictures. Mounts permit the simultaneous use of Rolleinar lenses, filters and lens hood.

The Rolleisoft #0 for weak soft-focus effect. Primarily for strong contrasts of bright, glittering objects and backlighted subjects.

The Rolleisoft #1 offers a greater soft-focus effect and is best-suited for contrasty, high-lighted subjects; portraiture.



ROLLEISOFT #0

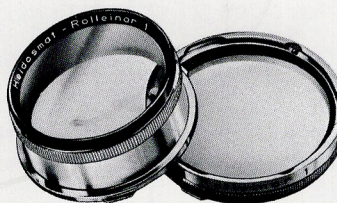
- ROLLEISOFT #0, Bay I **Cat. No. 201 310** (10603)
- ROLLEISOFT #0, Bay II **Cat. No. 202 280** (11110)
- ROLLEISOFT #0, Bay III **Cat. No. 203 250** (11518)

### Rolleinar Closeup Lenses

Each set consists of a parallax compensated viewing lens and a taking lens. Lenses are coated; no exposure compensation is required. The bayonet mounting on the front permits using filters. Set 1 Rolleinars give an approximate subject area of 13" by 13". With the 80mm and 60mm lenses this means a working range from 18½" to 39½". With the 75mm lens it gives a working range from 17½" to 39½". Set 2 Rolleinars are slightly "stronger," covering an approximate subject area of 8" by 8". The working range for 80mm and 60mm lenses with Set 2 Rolleinars drops to 12½" to 19¾". With the 75mm lens it ranges from 19¾" to 12¾". The Set 3 Rolleinars are the "strongest" with an approximate subject area of 6" by 6". Set 3 Rolleinars give 80mm, 75mm and 60mm lenses a working range between 12½" and 9⅞".

ROLLEISOFT #1

- ROLLEISOFT #1, Bay I **Cat. No. 201 320** (10612)
- ROLLEISOFT #1, Bay II **Cat. No. 202 290** (11129)
- ROLLEISOFT #1, Bay III **Cat. No. 203 260** (11527)



There are also two special Rolleinar sets. The Rolleinar 0.35 gives the Tele-Rolleiflex a close-up range from 9'2" to 4'5". The Rolleinar 0.7 gives the Tele-Rolleiflex a close-up range between 4'6½" and 3'½". The Tele-Rolleiflex can also use the Rolleinar Sets 1 and 2 Bayonet III.

### ROLLEINAR CLOSE-UP LENS SETS

Bay. Size I	Cat. No.	Bay. Size II	Cat. No.	Bay. Size III	Cat. No.
R'NAR SET #1	<b>201 040</b> (10454)	R'NAR SET #1	<b>202 020</b> (10968)	R'NAR SET #1	<b>203 020</b> (11378)
R'NAR SET #2	<b>201 050</b> (10463)	R'NAR SET #2	<b>202 030</b> (10977)	R'NAR SET #2	<b>203 030</b> (11387)
R'NAR SET #3	<b>201 060</b> (10472)	R'NAR SET #3	<b>202 040</b> (10986)	R'NAR SET #3	<b>203 040</b> (11396)

- ROLLEINAR .35 for TELE-ROLLEIFLEX **Cat. No. 208 010** (11642)
- ROLLEINAR 0.7 for TELE-ROLLEIFLEX **Cat. No. 208 020** (11651)

# Filters

## For Black & White Films

Rollei filters for black and white photography have a hard and durable anti-reflection coating. The exposure correction for each filter is

engraved on the mount. These filters have a bayonet mount.

Bayonet Size	Light Yellow	Medium Yellow	Light Green	Green	Orange	Light Red	Light Blue	UV	Infra-red
<b>I</b>	<b>201 070</b> (10481)	<b>201 080</b> (10490)	<b>201 090</b> (10506)	<b>201 100</b> (10515)	<b>201 110</b> (10524)	<b>201 120</b> (10533)	<b>201 130</b> (10542)	<b>201 150</b> (10560)	<b>201 140</b> (10551)
<b>II</b>	<b>202 050</b> (10995)	<b>202 060</b> (11004)	<b>202 070</b> (11013)	<b>202 080</b> (11022)	<b>202 090</b> (11031)	<b>202 100</b> (11040)	<b>202 110</b> (11059)	<b>202 130</b> (11077)	<b>202 120</b> (11068)
<b>III</b>	<b>203 050</b> (11402)	<b>203 060</b> (11411)	<b>203 070</b> (11420)	<b>203 080</b> (11439)	<b>203 090</b> (11448)	<b>203 100</b> (11457)	<b>203 110</b> (11466)	<b>203 130</b> (11484)	<b>203 120</b> (11475)

Six digit number is the Catalog No. of filter in respective bayonet size.

Rollei Filter	Use	Exposure Increase	Exposure Value Adjustment
Light Yellow	Landscapes, snow, clouds. Renders yellow and green lighter, blue darker.	2x	-1
Medium Yellow		3x	-1.5
Light Green	Landscapes, snow, clouds. Renders green lighter, red (complexion) and blue darker.	2x	-1
Green	For panchromatic emulsions. Gives stronger effects than light green.	3x	-1.5
Orange	Hazy distant views. Renders yellow-red lighter, blue darker, distant objects clearer.	3-7x	-1.5 to -3
Light Red	Hazy distant views. Renders red lighter, blue-green darker. Gives stronger effects than Orange Filter.	4-10x	-2 to -3.5
Light Blue	Artificial light. Renders red darker. For ultra-pan emulsions.	1.5x	-0.5
UV	High altitudes above 6,000 feet. Seascapes. Eliminates ultra-violet rays which reduce contrast.	1.5x	-0.5
Infra-Red <sup>‡</sup>	Special filter for infra-red emulsions. Transmits dark red above 700m $\mu$ and infra-red.	*	*

<sup>‡</sup>The infra-red filter features special compensation for focusing difference between visible and infra-red portion of the spectrum. Direct ground glass focusing may be employed with full assurance of sharp pictures.

\*Exposure depends on type of emulsion used and must be determined by test.

## For Color Films

The H-1 FILTER is a color-free, ultra-violet absorbing filter for daylight color film that reduces the tendency towards a predominance of blue. It is for use at high altitudes, for distant landscapes, and on or near the ocean, and for general use in color photography. The H-1 filter is intended for use with Xenar, Tessar and Triotar lenses. The Planar, Xenotar, Sonnar and Distagon lenses already provide the ultra-violet absorption qualities of these filters.

versal films (especially blue casts). These filters have multiple bayonets and, therefore, permit combining with other lens accessories. Wratten equivalent: Skylight 1A; no correction of exposure required.

Bayonet Size	H-1	R1.5
<b>I</b>	<b>201 180</b> (10579)	<b>201 280</b> (10588)
<b>II</b>	<b>202 160</b> (11086)	<b>202 250</b> (11093)
<b>III</b>	—	<b>203 400</b> (11449)

\* Six digit number is Catalog No. of filter in respective bayonet size.

R1.5 FILTER avoids color casts with color re-

**ROLLEI PENTA PRISM.** The Rollei Penta Prism provides full frame eye-level viewing and focusing. Ideal in use with Pistol grip. The Prism reproduces the viewfinder image on an upright plane, laterally correct. Following motion is easy and natural. The Pentaprism fits all 2¼" x 2¼" Rollei cameras with removeable focusing hood. The ocular hood gives complete protection against extraneous light for clear viewing under the most difficult conditions. Attaching and removing the Penta Prism is accomplished with the same simplicity as with the focusing hood. The Pentaprism weighs 14½ ounces.

The Penta B Eyepiece attachment makes focusing much easier for eye glass wearers.

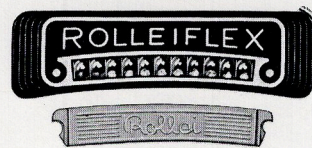
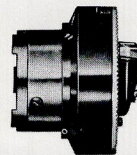
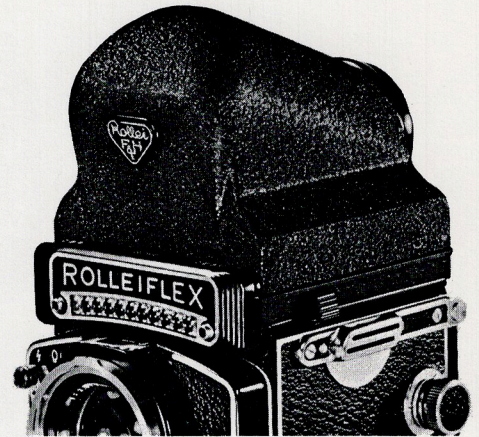
**ROLLEI PENTA PRISM with Leather Case**  
**Cat. No. 209 090** (10773)

**PENTA B EYEPIECE for Penta Prism.**  
**Cat. No. 209 100** (10782)

**FRONT FLAP for Eveready Case for use w/ mounted Penta Prism. (Except Tele & W/A)**  
**Cat. No. 961 040** (10825)

**EXPOSURE METER KIT.** For the following Rolleiflex models: T, Tele, 3.5E-2, E-3, 2.8E, E-3; and Wide Angle Rollei. Pre-assembled parts are easily owner-installed. Film speed settings ASA 6 to 1600. Highly sensitive, shock resistant dual-range meter covers 18 Exposure Values from dimmest to brightest illumination. Includes camera name plate with assembled photocell plus range switch, light diffuser, and inst.  
**Cat. No. 580 060** (10889)

**FOCUSING SCREEN WITH CENTRAL MICRO-PRISM GRID.** A Rolleiclear focusing screen with a central micro prism grid is now available to fit all Rollei twin lens reflex cameras with removable focusing hoods. The grid— $\frac{5}{8}$ " diameter—consists of several thousand micro prisms which form a clear and distinct image when the subject is in critical focus. The image immediately appears blurred when the prime subject is not correctly focused. Well suited to action photography with its increased speed of operation. Greater image brilliance.  
**Cat. No. 580 070** (10807)



**PROTECTIVE COVER FOR EXPOSURE METER.** For Rolleiflex cases with removable front flap. Attaches easily to eveready cases to protect the installed or built-in exposure meter on the focusing knob. Case may be opened and/or front flap removed without detaching cover from case. **Cat. No. 961 050** (10816)





## Accessories



**PISTOL GRIP.** This sturdy, lightweight support is shaped to fit the right hand. Designed primarily for eye-level shooting, it also permits steady shooting at waist or chest level. The grip has a Rolleiflex-type quick release clamp, shoulder ledge for mounting standard flash bracket, smooth trigger, trigger safety lock, and adjustable cable release for selective trigger travel. Fits all Rolleis with grooved edge on tripod base plate; Rolleiflex 2.8 above No. 1,260,000, Rolleiflex 3.5 above No. 1,267,000, Rolleicord above No. 1,344,000, Tele-Rollei, Wide-Angle Rollei, Rolleiflex 4x4, and Rollei-Magics **Cat. No. 209 060** (10737)

**WRIST STRAP** for Pistol Grip.  
**Cat. No. 979 020** (10746)

**ROLLEIFIX TRIPOD HEAD.** Mounted on a tripod, attached to a flashgun or Panorama Head, the Rolleiflex provides for quick fastening or removal of the camera. It permits successive rolls of film to be exposed of the same fixed subject by a tripod-mounted camera without disturbing the original camera-subject orientation. Fits all Rollei cameras with grooved edge on tripod base plate; Rolleiflex 2.8 above No. 1,260,000, Rolleiflex 3.5 above No. 1,267,000, Rolleicord above No. 1,344,000, Tele-Rollei, Wide-Angle Rollei, Rolleiflex 4x4, and Rollei-Magics. **Cat. No. 209 050** (16267)

### Lens Hoods.

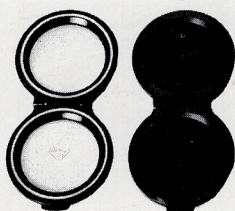
Should be used at all times to protect the taking lens from extraneous light, and from the more obvious hazards of rain, snow, etc. Mounts on the outer bayonet of the taking lens; permits use of Rollei lens accessories on inner bayonet. Square front coincides with square format.

**PANORAMA HEAD.** Especially designed for taking panoramic views with a tripod-mounted Rolleiflex or Rolleicord. The head is divided into 10 sections, making a complete circle of 360°. Each picture has a small overlap for mounting into a perfect panoramic scene. A sensitive spirit level is built in for exact horizontal alignment. **Cat. No. 209 081** (10764)



- |                   |          |                                 |
|-------------------|----------|---------------------------------|
| FOLDING LENS HOOD | Bay. I   | <b>Cat. No. 201 000</b> (10445) |
| FOLDING LENS HOOD | Bay. II  | <b>Cat. No. 202 000</b> (10959) |
| FOLDING LENS HOOD | Bay. III | <b>Cat. No. 203 000</b> (11369) |

### Lens Caps



- |                        |          |                                 |
|------------------------|----------|---------------------------------|
| CHROME LENS CAP        | Bay. I   | <b>Cat. No. 540 090</b> (10834) |
| BLACK PLASTIC LENS CAP | Bay. I   | <b>Cat. No. 580 030</b> (10843) |
| CHROME LENS CAP        | Bay. II  | <b>Cat. No. 540 100</b> (11305) |
| BLACK PLASTIC LENS CAP | Bay. II  | <b>Cat. No. 540 170</b> (11314) |
| CHROME LENS CAP        | Bay. III | <b>Cat. No. 570 130</b> (11572) |
| BLACK PLASTIC LENS CAP | Bay. III | <b>Cat. No. 570 250</b> (11581) |

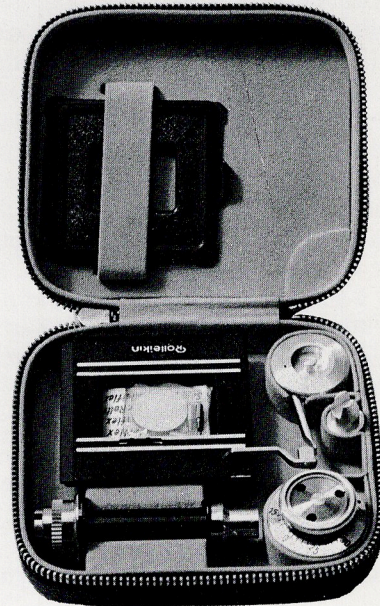
## Rollei Accessories To Change The Picture Format

### ROLLEIKIN 35 MM ADAPTER

The Rolleikin Adapter permits use of 35 MM film in  $2\frac{1}{4} \times 2\frac{1}{4}$  Rolleis, except Rollei-Magics. Rolleikin 2 is for Rolleiflex  $2\frac{1}{4} \times 2\frac{1}{4}$  cameras above No. 1,100,000 (except R'flex T below No. 2, 151,000), Tele-Rolleiflex above No. 2, 305,001 and Rolleicord cameras above No. 1,137,000. If cameras in this series are not already equipped with an adjustable pressure plate, a combination back must be ordered additionally for use with the Rolleikin 2.

The Rolleikin adapts the Rollei to 35 MM film cartridges of 12, 20 or 36 exposures. Complete with masks and case. Vertical format.

**Cat. No. 208 800** (10436)



### 16 EXPOSURE MASK SET— for ROLLEIFLEX T

This outfit reduces the picture size from  $2\frac{1}{4} \times 2\frac{1}{4}$  inches (6 x 6 cm) to  $1\frac{5}{8} \times 2\frac{1}{8}$  inches (4 x 5.5 cm) or  $1\frac{5}{8} \times 1\frac{5}{8}$  inches (4 x 4 cm) superslide, and produces 16 instead of 12 exposures.

**Cat. No. 208 100** (10898)

### 16 EXPOSURE KIT—FOR ROLLEICORD Va and Vb

The 16 Exposure Kit produces 16 pictures in a masked format of  $1\frac{5}{8} \times 2\frac{1}{8}$ " (4 x 5.5 cm) or  $1\frac{5}{8} \times 1\frac{5}{8}$ " (4 x 4 cm) otherwise known as superslide format—with full parallax correction.

**Cat. No. 208 300** (10418)

### 24 EXPOSURE KIT—FOR ROLLEICORD Va and Vb

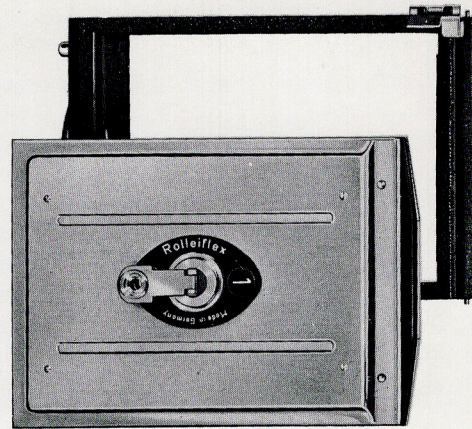
The 24 Exposure Kit produces 24 pictures masked down to image size of 28 x 40 mm or the popular 24 x 36 mm format—with full parallax correction. Horizontal format.

**Cat. No. 208 500** (10427)



## Outfits For Special Photographic Assignments

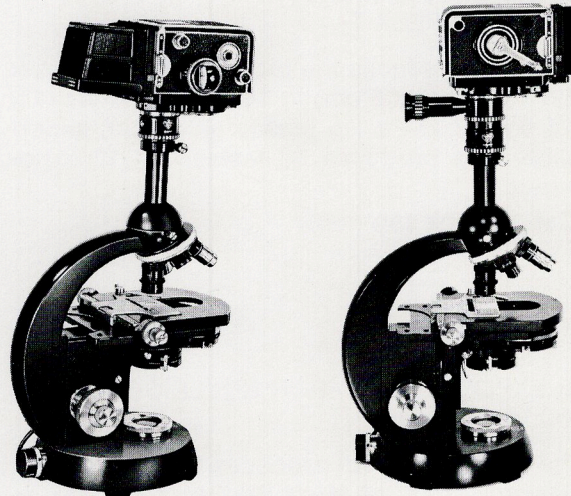
**CUT FILM ADAPTER KIT.** For use with 2¼" x 2¼" Rolleis where single exposures or the use of special negative and positive materials in color and black and white, or immediate, individual processing is called for. Optional is a direct focusing screen that permits critical focusing with the taking lens where exact, complete use of the picture format is required. For use with Rolleiflex and Rolleicord models (except 4 x 4 and Rollei-Magic I and II). Includes adapter back and 3 special film holders with 3 cut-film sheaths. Film size: 2½" x 3½" (6.5 x 9cm). Holders less sheaths accept glass plates.



- CUT FILM ADAPTER KIT      **Cat. No. 209 049** (17066)
- ADAPTER BACK ONLY      **Cat. No. 209 000** (17075)
- CUT FILM/PLATE HOLDER      **Cat. No. 209 010** (10694)
- CUT FILM SHEATH      **Cat. No. 209 020** (10700)
- DIRECT FOCUSING SCREEN      **Cat. No. 209 030** (10719)

**MICRO ATTACHMENT.** For use of the microscope with the Rollei Combining the precision of both, the Micro Attachment is applicable within the complete range of photomicrography. Permits utilization of the complete circular picture area. The Micro Attachment is composed of two parts. The Micro Tube is for attaching to a standard 25mm microscope ocular. Used alone, it permits micro-pictures of non-moving objects. Camera is attached alternatively to viewing lens and taking lens for focus and exposure by means of bayonet ring. Bayonet Rings are available individually for using different model Rollei cameras with the same Micro Tube.

The Micro Prism is used with the Micro Tube. It covers all possibilities of photomicrography, including living specimens. The prism mounts directly on taking lens, permitting constant control of picture field, even during exposure, by means of a focusing ocular. (With Bayonet Ring I 6x6 only. In use, it requires switching bayonet rings of Tube and Prism if tube is not Bayonet I 6 x 6). Prism has adjustable ocular.



ROLLEI WITH MICRO TUBE      ROLLEI WITH MICRO TUBE & PRISM

- MICRO TUBE—Bayonet I      **Cat. No. 208 081** (10621)
- MICRO TUBE—Bayonet II      **Cat. No. 208 082** (11156)
- MICRO TUBE—Bayonet III      **Cat. No. 208 083** (11554)
- ROLLEI MICRO PRISM      **Cat. No. 208 090** (10667)
- Bayonet I—SPARE Bay. RING      **Cat. No. 201 360** (10630)
- Bayonet II—SPARE BAYO-  
NET RING      **Cat. No. 202 310** (11165)
- Bayonet III—SPARE BAYO-  
NET RING      **Cat. No. 203 280** (11563)

## For Use With Rolleiflex 3.5F Models Above No. 2,250,000

The Rolleimarin is a non-corroding and pressure-proof camera housing suitable for diving depths down to about 55 fathoms (300 feet). It is intended for scientific, industrial and sports applications of underwater photography with the Rolleiflex.

The Rolleiflex is especially suitable for underwater shooting, since all the controls can be set in the customary way without concern for the difference in the refractive indices between air and water. Because of its positive and reliable focusing system, the Rolleiflex is a special asset at the low lighting levels and at the short subject distances involved underwater. An extensive range of underwater equipment is available, permitting even close-ups (down to 15<sup>3</sup>/<sub>4</sub> inches) and exposures with filters or electronic flash.

While swimming, the finder image is easily observed through a built-in prism and a large magnifier. The shutter speed and aperture settings are in constant view and permit easy setting. The frame finder is adjustable to compensate for parallax at the appropriate subject distance. For rapid distance settings above and underwater (with allowance for the difference refractive index) the focusing knob carries two distance scales, calibrated in both feet and meters.

Controls coupling turret, focus knob coupler meter storage case and neck cord are supplied with housing.

Accessory FLASH UNIT 2 includes flash arm, reflector, BC battery pack and mounts on left side of housing.

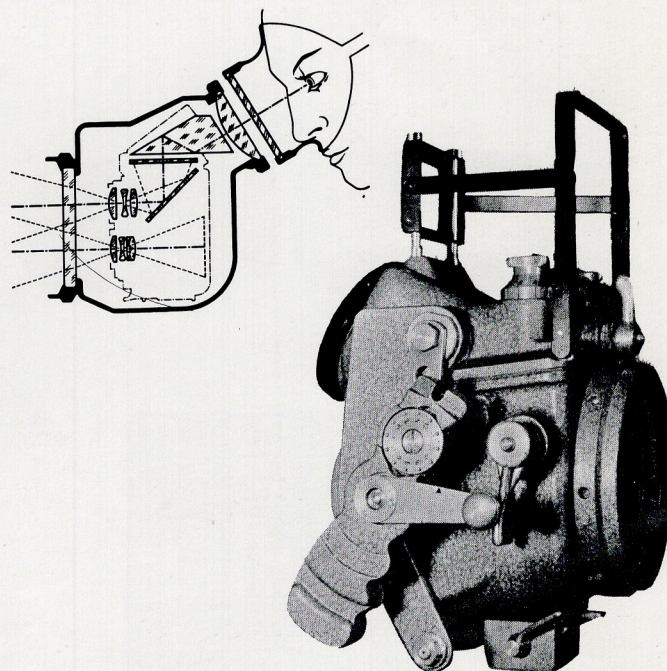
EXTENSION FLASH UNIT permits firing 2 lamps simultaneously, one at each side and is appropriately fitted with dual plug; includes shoe, screws, arm and reflector. Housings above #1586 have required threaded holes.

THREE-POSITION TILT HEAD for FLASH illuminates full subject field even for close-ups. Both the Flash Unit 2 and Extension Flash Units are so equipped.

\*Two special Rolleinar sets (with parallax compensation) cover the following distances: Set 1—from 49 inches to 23<sup>3</sup>/<sub>4</sub> inches (135-60 cm) and Set 2—from 23<sup>3</sup>/<sub>4</sub> inches to 15<sup>3</sup>/<sub>4</sub> inches (60-40 cm). The distances are measured from the front window of the Rolleimarin. A special version of the Rolleinar set is placed in a hinged mount in front of the lenses, permitting a positive changeover from close-ups to normal distances, underwater.

ROLLEIMARIN 4 UNDER-WATER HOUSING	<b>Cat. No. 209 730</b> (14429)
CANVAS CASE for R'Marin Housing	<b>Cat. No. 972 070</b> (11183)
FLASH UNIT 2 for Rolleimarin	<b>Cat. No. 209 770</b> (11192)
EXTENSION FLASH For Rolleimarin	<b>Cat. No. 209 780</b> (11217)
THREE-POSITION TILT-HEAD For Flash/Ext. Flash	<b>Cat. No. 209 790</b> (11235)
FILTER DISC, LT. YELLOW for R'Marin 4	<b>Cat. No. 209 850</b> (11244)
FILTER DISC, MED. YELLOW for R'Marin 4	<b>Cat. No. 209 860</b> (11253)
FILTER DISC, ORANGE for R'Marin 4	<b>Cat. No. 209 870</b> (11262)
LEATHER CASE with THREE FILTERS for R'Marin 4	<b>Cat. No. 209 889</b> (11271)
CLOSE-UP LENS ROLLEINAR SET 1 for R'Marin 4*	<b>Cat. No. 209 740</b> (11280)
CLOSE-UP LENS, ROLLEINAR SET 2 for R'Marin 4*	<b>Cat. No. 209 750</b> (11299)

‡ With bayonet socket to accept #5 bulbs or equiv.



## Eveready Cases & Neck Straps

EVEREADY CASE for R'flex **Cat. No. 960 420** (15370)  
2.8F/120-220

EVEREADY CASE for R'flex **Cat. No. 960 400** (15361)  
3.5F/120-220

EVEREADY CASE for Tele- **Cat. No. 970 550** (11633)  
Rolleiflex 120 ONLY

EVEREADY CASE for Tele- **Cat. No. 960 440** (07074)  
Rolleiflex 120/220

EVEREADY CASE for Rollei- **Cat. No. 960 320** (10870)  
flex T

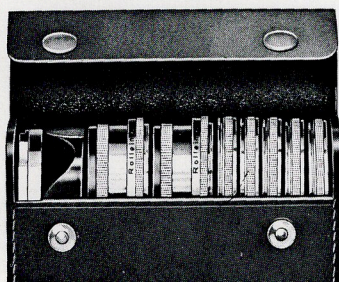
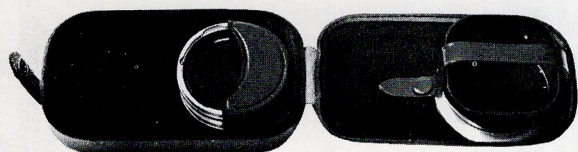
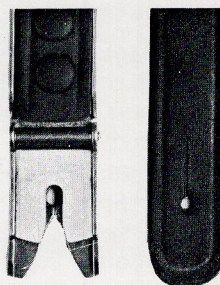
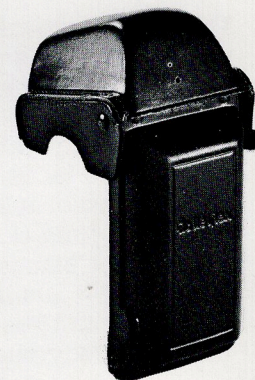
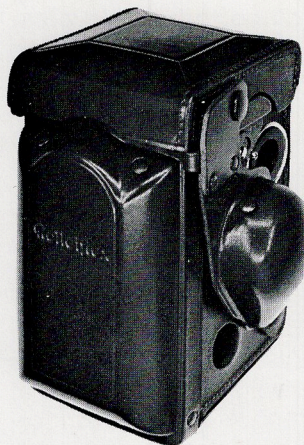
EVEREADY CASE for Rollei- **Cat. No. 960 070** (10393)  
cord Vb and Va

SPECIAL FRONT FLAP for **Cat. No. 961 040** (10825)  
E/R cases for use with  
mounted Penta Prism (for  
all detachable-front cases  
except Wide Angle and  
Tele).

BLACK LEATHER NECK **Cat. No. 570 141** (17482)  
STRAP— with quick action  
spring clips for latest model  
Rolleiflexes

BROWN LEATHER NECK **Cat. No. 570 140** (10904)  
STRAP— as above

NECK STRAP, black for Rol- **Cat. No. 979 010** (10409)  
leicord



## Cases For Lens Hood & Filters

LEATHER CASE, BROWN for **Cat. No. 700 712** (11138)  
Bayonet II Lens Hood and  
2 Filters—empty

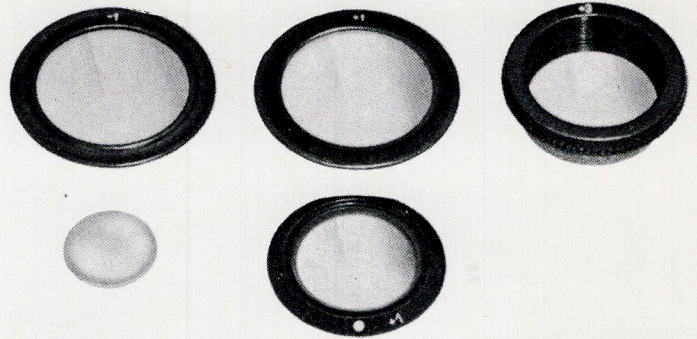
LEATHER COMPARTMENT **Cat. No. 700 713** (11147)  
CASE, BROWN—holds Bay-  
onet II Lens Hood, two Rol-  
leinar sets, five filters

LEATHER COMPARTMENT **Cat. No. 700 714** (11545)  
CASE, BROWN—holds Bay-  
onet III Lens Hood, two Rol-  
leinar sets, five filters



**MAGNIFYING HOOD.** Focuses for optimum visual sharpness. Numbers — provide reference calibration for individual settings. Has folding rubber eyecup. Rigid construction eliminates all outside light from focusing screen.

**Cat. No. 208 860** (10791)



GROUP F

GROUP E

PENTAPRISM

Rollei is one of the very few cameras in the world to provide interchangeable magnifier lenses for its focusing hood.

The range of 6 magnifiers from  $\pm 3$  diopters is designed to provide the correct accommodation for eyeglass wearers and those having viewing deficiencies.

The chart lists the respective part number of these magnifiers for diopters and Rollei models.

DIOP- TER ▼	GROUP F		GROUP E		TLR PENTAPRISM
	TOP MAGN.	REAR MAGN.	TOP MAGN.	REAR MAGN.	
+3	92192.41.0	92787.00.0	92152.41.0	92172.41.0	94370.03.0
+2	92191.41.0	92786.00.0	92151.41.0	92171.41.0	94370.02.0
+1	92190.41.0	92785.00.0	92150.41.0	92170.41.0	94370.01.0
-1	92197.41.0	92794.00.0	92157.41.0	92177.41.0	94370.11.0
-2	92196.41.0	92793.00.0	92156.41.0	92176.41.0	94370.12.0
-3	92195.41.0	92791.00.0	92155.41.0	92175.41.0	94370.13.0

Rollei magnifiers are available in +3, +2, +1 and -1, -2, -3 corrective diopters. No charge for replacement if original magnifiers are returned in new condition.

**GROUP F**—for Rolleiflex models with removable focusing hood only. (Top Magnifier fits SL66)

3.5E2, 3.5E3, 3.5F, 2.8E2, 2.8E3, 2.8F, Tele- and Wide-Angle Rolleiflex.

**GROUP E**—for Rolleiflex 3.5 (1,100,000-1,870,000) and Rolleiflex 2.8E only.

**Pentaprism**—viewing magnifier for ocular hood of Pentaprism for TLR models.

**Reference Chart for Rollei Accessories  
for Rollei Twin-Lens Reflex Cameras**

NOTES:  
 1 Combination only—Micro-Tube with Micro-Prism.  
 2 When ordering add: "for Rolleicord Va."  
 3 From camera 1,100,000 new neck strap holders are required.  
 4 New neck strap holders are required.  
 5 Chromium Len Cap only can be used.  
 6 Except Rolleipol.  
 7 With American 1/4" x 20 thread.

CAMERA	CAMERA NUMBER (from-to)	Lens Hood Bayonet Sizes			Filter Color Filter Rolleipol Rolleisoft Bayonet Size			Rolleinar Sets Bayonet Size			Tele-Rolleinars	Lens Cap Plastic or Chromium Bayonet Size			Micro-Tube Bayonet Size			Micro-Prism	Rolleikin 1	Rolleikin	Rolleikin 2,3	Cut Film Adapter	Flat Glass Facility	Panorama Head	Tripod Head	Pistol Grip	Magnifying Hood	Penta Prism	Foc. Screen w/Microgrid	Mask Set 16	16 and 24 Exposure Kits	Exposure Meter Kit	Leather Cover f/Light Meter	Neckstrap f/Rolleicord	Neckstrap f/Rolleiflex	Rolleimarin 4
		4 x 4	I	II	III	I	II	III	I	II		III	I	II	III	I	II																			
Rolleicord II	612,000—859,000		•			• <sup>6</sup>								• <sup>1</sup>			• <sup>1</sup>	•															•			
Rolleicord II	859,000—1,135,999		•			•							•				•	•															•			
Rolleicord III	1,137,000—1,156,999		•			•							•				•	•															•			
	1,157,000—1,344,050		•			•							•				•	•															•			
Rolleicord IV	1,344,051—1,390,999		•			•							•				•	•															•			
Rolleicord V	1,500,000—1,583,999		•			•							•				•	•															•			
Rolleicord Va	1,584,000—1,943,999		•			•							•				•	•															•			
Rolleicord Vb	2,600,000—		•			•							•				•	•											• <sup>2</sup>				•			
Rolleiflex 4 x 4	622,000—733,000		•			• <sup>6</sup>								• <sup>1</sup>			• <sup>1</sup>	•																		
Rolleiflex 4 x 4	2,000,001—2,069,999	•				•								•			•	•																		
Rolleiflex-Automat	568,516—805,000		•			• <sup>6</sup>								• <sup>1</sup>			• <sup>1</sup>	•																		
Rolleiflex-Standard-New	805,000—927,999		•			•								• <sup>1</sup>			• <sup>1</sup>	•																		
Rolleiflex-Automat	805,000—1,159,999		•			•								•			•	•															• <sup>3</sup>			
Rolleiflex-Automat	1,160,000—1,271,000		•			•								•			•	•															• <sup>4</sup>			
Rolleiflex-Automat	1,271,001—1,739,999		•			•								•			•	•															• <sup>4</sup>			
Rolleiflex T	2,100,000—2,150,999		•			•								•			•	•															•			
	2,151,000—		•			•								•			•	•															•			
Rolleiflex 3,5 "E" or "G"	1,740,000—1,869,999			•												•		•																•		
Rolleiflex 3,5 E 2	1,870,000—1,872,010			•												•		•																•		
Rolleiflex 3,5 E 2	2,480,000—2,482,999			•												•		•																•		
Rolleiflex 3,5 E 3	2,380,000—2,385,050			•												•		•																•		
Rolleiflex 3,5 F	2,200,000—2,229,999			•												•		•																•		
	2,230,000—2,249,999			•												•		•																•		
	2,250,000—2,815,050			•												•		•																•		
	2,815,051—			•												•		•																•		
Rolleiflex 2,8 A	1,101,000—1,203,999															•		•																• <sup>4</sup>		
Rolleiflex 2,8 B	1,204,000—1,260,000				•											•		•																• <sup>4</sup>		
Rolleiflex 2,8 C	1,270,000—1,475,000				•											•		•																• <sup>4</sup>		
Rolleiflex 2,8 D	1,600,000—1,620,999				•											•		•																• <sup>4</sup>		
Rolleiflex 2,8 E	1,621,000—1,665,999				•											•		•																•		
Rolleiflex 2,8 E 2	2,350,000—2,356,999				•											•		•																•		
Rolleiflex 2,8 E 3	2,360,000—2,362,050				•											•		•																•		
Rolleiflex 2,8 F	2,400,000—2,451,850				•											•		•																•		
	2,451,851—				•											•		•																•		
Tele-Rolleiflex	2,300,000—2,304,999				•											•		•																•		
	2,305,000—				•											•		•																•		
Rollei-magic	2,500,000—2,534,999			•												• <sup>5</sup>																		•		
Rollei-magic II	2,535,000—2,545,999			•												• <sup>5</sup>																		•		
Wide Angle Rolleiflex	2,490,000—2,493,999																																	•		

Bayonet Size IV Lens Accessories