

1895

Photographic Cameras.

Mfrd. by



ROCHESTER, N.Y.

FOR SALE BY
CHICAGO PHOTO STOCK CO.,
38 E. Randolph St., CHICAGO, ILL.

CATALOGUE AND PRICE LIST
OF
PHOTOGRAPHIC APPARATUS

MANUFACTURED BY



OFFICE AND FACTORY,

13 AQUEDUCT STREET, ROCHESTER, N. Y.



JUNE, 1895.

• Terms. •

Prices given herein are net ; goods boxed and delivered to Express or Freight Company.

We guarantee safe arrival of goods at destination.

In ordering goods, please state how to ship, or we will use our discretion.

All goods ordered by express C. O. D. must in every instance be accompanied by double the amount of transportation charges.

All orders for shipment by freight must be accompanied by full amount of invoice.

All orders to be sent by mail must be accompanied by full amount of invoice, including postage, and will only be shipped at the purchaser's risk.

Parties unknown to us and desiring to establish a line of credit, will save delay in their order by giving approved references.

Prices given herein are subject to change without notice.

• To Our Patrons. •

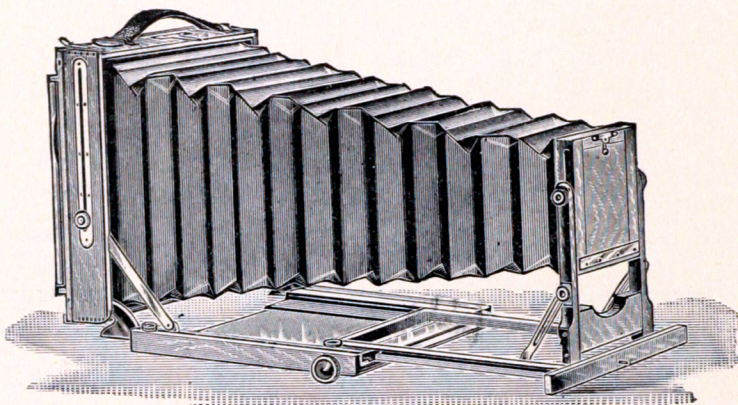
IN presenting our fourth annual catalogue to you we trust you will give it your careful perusal. If you do not find on our list such articles as you need, it will be to our mutual interest if you will make your wants known, and if the ones listed are not just to your liking please let us know ; not that we can change the price of any particular article, but we may be able to furnish a substitute that will suit. Please bear in mind that we shall be under obligations for any suggestions you may make.

We have a finely equipped machine and wood-working department for the production of all the mechanical features in our line, in which we employ mechanics of inventive ability, and we, therefore, produce the highest grade of mechanical ingenuity. We are energetic and progressive, and are perfecting new ideas every month, but it is impossible to keep them all in print ; the principle ones will be presented from time to time in circulars which will be sent you. We will gladly correspond with you if you will make your wants known.

We trust that these few remarks will convince you that we are in a position to meet your requirements, and that you will let us hear from you on receipt of this and in the future as your needs may dictate. When ordering always use the name or number given in the catalogue.

Yours very truly,

ROCHESTER CAMERA M'FG CO.



THE KING CAMERA.

The best camera known to the photographic art. The principal points aimed at in the designing of this camera were to produce an instrument that would combine every modern improvement of practical utility ; compact and portable as possible, consistent with strength and rigidity ; that should be simple in its parts, so as to avoid difficulties in use and liability to be easily put out of order.

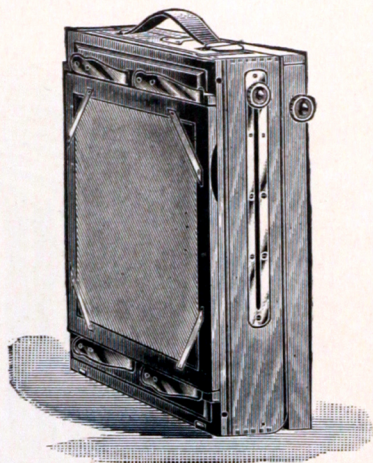
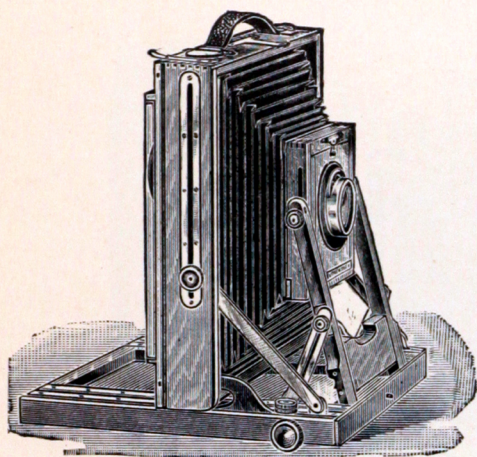
It has rising and falling front, with very great range in either direction.

It has swinging motion both to the back and front. The back may be swung in either horizontal or vertical direction. The front may be swung in a vertical plane, the great advantage of this being when the camera is used for photographing objects either a great deal above or below its own level, the camera may be tilted and the front and back be swung parallel to each other, and exactly vertical, so giving the advantage of a great rise or fall without any distortion.

The back part of the camera is arranged to slide up close to the front for use with wide angle lenses, there is, therefore, no projecting baseboard to cut off the angle of view when a very wide angle lens is used. A lens of two inch focus can be used without the bed obstructing the view, yet the extreme range of focus is available, the 5 x 8 having a range of 20 inches, and other sizes in like proportion.

Compactness is obtained by removing as far as possible all projections ; when closed, no working parts, except the focusing screws project on the outside.

The thickness of the camera, when closed, is regulated by the combined substance of baseboard, bellows, front, and focusing glass pressed closely together. The $6\frac{1}{2} \times 8\frac{1}{2}$ measures $2\frac{3}{4}$ inches thick, all other sizes in the same proportion.



THE KING CAMERA.

The camera box is square, the back being reversible, so that when the view is wanted either horizontally or vertically on the plate, the change can be effected by simply reversing the back instead of the entire camera; the slides may be drawn from top, bottom, or either side.

The ground-glass screen is spring-actuated, which holds it in position and allows it to recede so as to insert the holder between the ground glass and camera back.

The camera has no loose parts and is very easy and simple of manipulation.

It has a spring catch to hold the lens board which obviates any danger of lens dropping and being lost or broken, a feature which has long been needed on all cameras.

It has a fine rack and pinion focusing movement.

A leather handle so it can be carried without the case if desired.

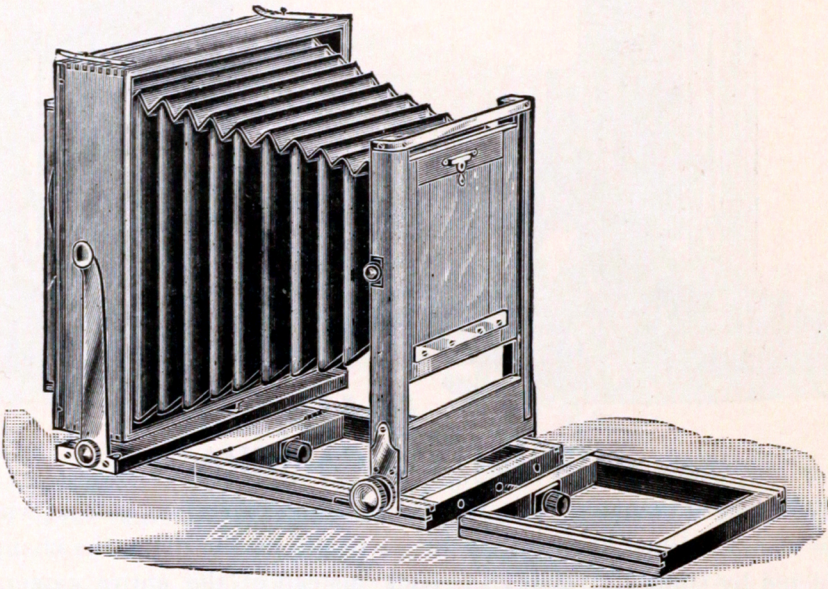
It is made of selected mahogany, highly polished, and all metal parts are made of brass, polished and lacquered.

The bellows is made of the best Russia leather.

The price of the KING includes one holder and canvas case.

When desired, cases will be furnished to hold camera and six holders, or camera, six holders, tripod and pocket for lenses.

SIZE OF VIEW.										PRICE.
5	x	7	-	-	-	-	-	-	-	\$35.00
5	x	8	-	-	-	-	-	-	-	35.00
6½	x	8½	-	-	-	-	-	-	-	38.00
8	x	10	-	-	-	-	-	-	-	40.00
10	x	12	-	-	-	-	-	-	-	50.00
11	x	14	-	-	-	-	-	-	-	55 00



ROCHESTER VIEW CAMERA.

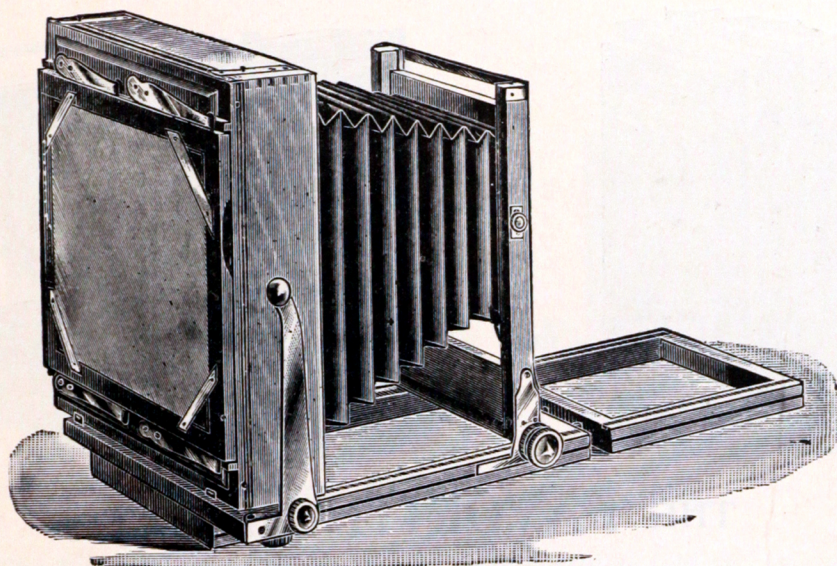
This is designed for a thorough business camera and can be recommended to both the professional and amateur photographer. It is made up in a first-class manner in every respect, light and compact as possible consistent with rigidity.

It is made of the best selected mahogany highly *polished*, and all the wearing parts are made of polished and lacquered brass. It has reversible back with our latest adjustable spring-actuated ground-glass screen, which allows the ground glass to recede so the holder will go between it and the camera back, and holds the holder in position. With the reversible back you can change it to take pictures either vertically or horizontally, without changing the position of the camera or altering the focus.

It is so arranged that the slides can be drawn from the top, bottom, or either side.

It is made with both vertical and horizontal swing, each swinging at the *center*. It has front focus, rack and pinion movement, excepting 14 x 17 and 17 x 20, which have back focus with sliding movement.

It has rising and falling front, cone shaped bellows which is attached to the front, so the front of the bellows is raised and lowered with the lens.



Showing Back View.

ROCHESTER VIEW CAMERA.

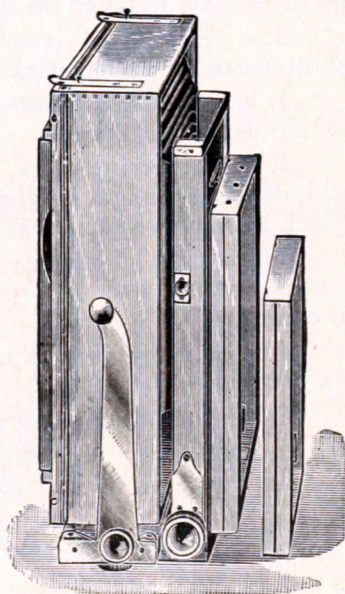
The 14 x 17 and 17 x 20 are furnished with book holders.

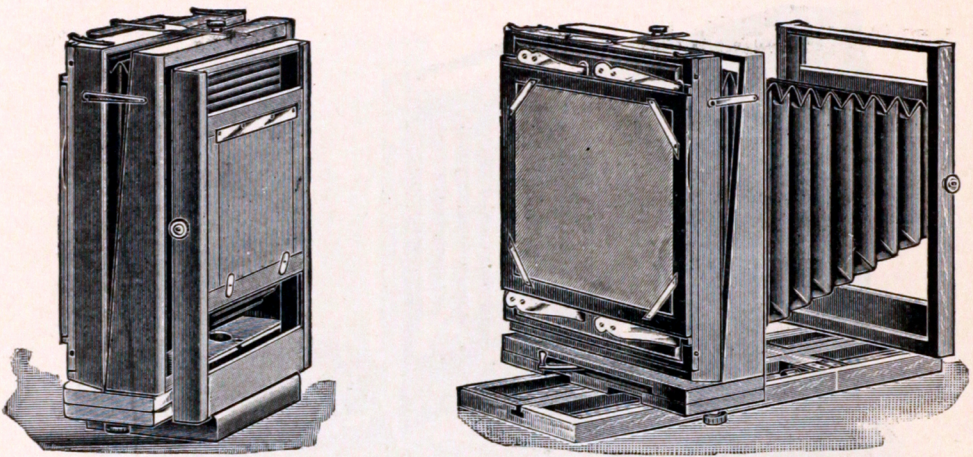
The cases are made to hold camera and three holders.

All the parts are made strong with reference to the work required, thus making the camera a model of lightness and strength.

Price includes canvas carrying case and one double plate holder.

SIZE OF PLATE.	PRICE S. S.	PRICE D. S.
5 x 7	\$18.00	\$20.00
5 x 8	18 00	20.00
6½ x 8½	20.00	22.00
8 x 10	22.00	24.00
10 x 12	28.00	30.00
11 x 14	30.00	32.00
14 x 17	— —	45.00
17 x 20	— —	50.00





THE FAVORITE CAMERA.

This is especially designed to meet the requirements of the outdoor professional, but can be used equally as well by the amateur or in the gallery.

It is made to cover the field of usefulness of all cameras, yet at a price within the reach of all.

It is made up in the best possible manner of polished mahogany, and the mountings are of polished and lacquered brass.

It has all the adjustments which include a rising and falling front, double swing back, and the front made wide enough so Stereoscopic lenses can be used.

The $6\frac{1}{2} \times 8\frac{1}{2}$ and 8×10 sizes have a cut-off division in order that two pictures may be taken on one plate.

The lens board is made sufficiently large so that an ordinary sized shutter can be placed back of the lens.

It has two tripod plates, allowing it to balance on the tripod with a lens of any length of focus.

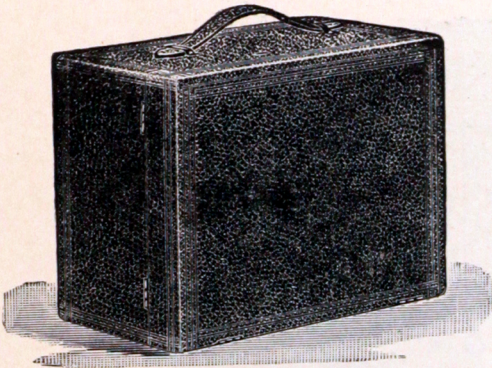
It has reversing back, spring-actuated ground-glass, back focus which will allow any length or angle lens to be used. It is fastened in focus by a quick acting lever which saves time when using.

The weight of a $6\frac{1}{2} \times 8\frac{1}{2}$ is only $4\frac{3}{4}$ pounds, and measures $10 \times 5 \times 12$ inches. Other sizes in proportion. While it is small and light it is strong and rigid.

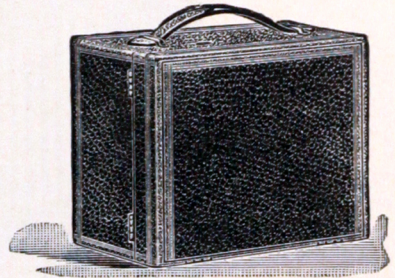
The carrying case is canvas made to hold the camera in one end, and six holders in the other.

Price, including camera, canvas case, and one double dry plate holder,

SIZE.	PRICE.	SIZE.	PRICE.
5 x 7	\$17.00	8 x 10	\$20.00
5 x 8	17 00	11 x 14	25.00
$6\frac{1}{2} \times 8\frac{1}{2}$	18.00	14 x 17	35.00



Showing 5 x 7, 6½ x 8½, 8 x 10 Closed.



Showing 4 x 5 Closed.

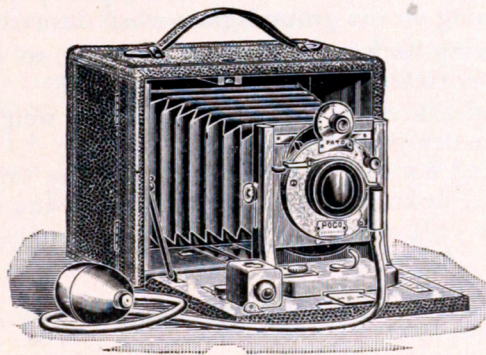
FOLDING POCO CAMERA.

The Poco Folding cameras are the most complete folding cameras ever devised, and they combine all the features of complete view cameras, yet with perfect compactness. They are self-contained when closed, and can be used on the tripod as well as in the hand.

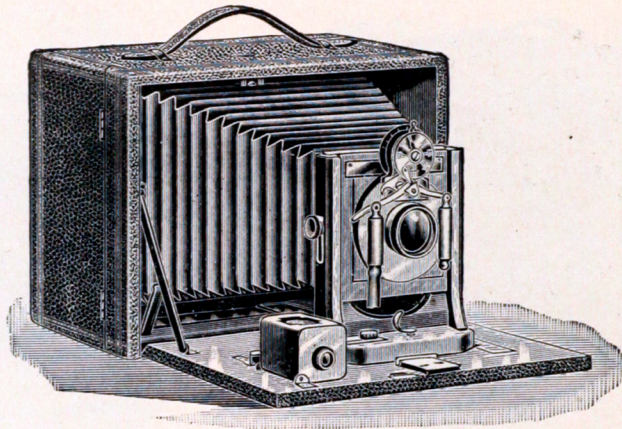
A specification of their adjustments and material of which they are made, together with size and price, will be given on the following pages. The same we believe will be sufficient to satisfy any skeptic that they are fully up to date, and the most complete cameras in the market.

All swings on the Poco are at centers, which is optically correct, and do not change the focusing scale.

All focusing scales are made separate to match the lens it accompanies. We request our friends to compare them with all other cameras.



Showing 4 x 5 Poco Folding, No. 25, with Pneumatic Release.



No. 40.

FOLDING POCO CAMERA.

The above cut represents the 5 x 7 Poco Folding, fitted with Bausch & Lomb Iris Diaphragm Shutter, with pneumatic release, including rubber tube and bulb. The range of automatic exposure is from $\frac{1}{100}$ of a second to three seconds. Longer exposures are made by pressing the bulb to open and again pressing to close the shutter. The diaphragm is regulated by simply turning a dial. The shutter can be used with or without bulb.

The lens is our high grade Rapid Symmetrical, perfectly rectilinear and free from distortion.

The camera is made of polished mahogany, the mountings of polished and lacquered brass, and it is covered with the best morocco grain leather, has leather handle and bellows.

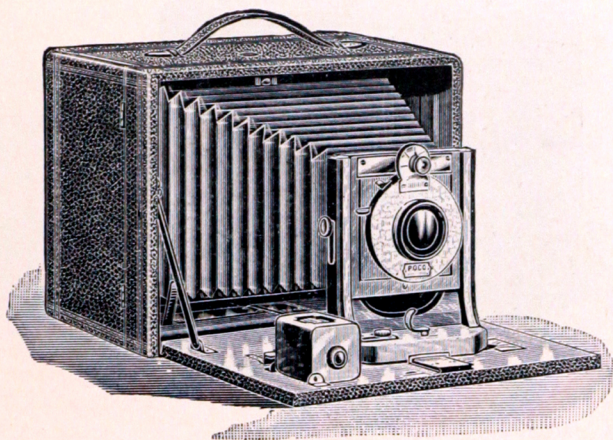
It has rising and sliding front, spring-actuated ground-glass (which can be easily removed or replaced, as will be necessary when using the roll-holder), and double reversing view finder which will allow the picture to be taken either vertically or horizontally. Two tripod plates, and large panel at the back for focusing on the ground-glass when desired.

It has double swing back swinging at the center, so that when in use it does not change the correctness of the focusing scale.

When closed it measures $5\frac{1}{4} \times 9\frac{1}{4} \times 7$ inches and weighs but $3\frac{3}{4}$ pounds, yet holds four double dry-plate holders or roll-holder.

The $6\frac{1}{2} \times 8\frac{1}{2}$ and 8×10 Pocos are made on the same principle as the 5 x 7. The $6\frac{1}{2} \times 8\frac{1}{2}$, measures $6\frac{1}{4} \times 11 \times 8\frac{1}{4}$ inches, and weighs $4\frac{1}{4}$ pounds. The 8×10 , measures $2\frac{3}{4} \times 6\frac{3}{4} \times 10\frac{1}{2}$ inches, and weighs 5 pounds.

PRICE.	No. 40, 5x7	No. 55, $6\frac{1}{2} \times 8\frac{1}{2}$	No. 65, 8x10
Complete, with Lens, Shutter, and one Dry-Plate Holder,	\$40 00	\$55 00	\$65.00
With Shutter, other lenses fitted, - - -	34 00	38.00	45.00
Pair B. & L. O. Co. Lenses and Stereo. Shutter, - - -	55.00	—	—
R. C. M. Co. Wide Angle Lens fitted to same shutter, - - -	12 00	15.00	18 00
Double Dry-Plate Holders, - - - - -	1.25	1.50	1.75
Roll-Holder, - - - - -	12.50	16.00	20.00
Leather Case and Shoulder Strap, - - -	3.00	4.00	5 00



No. 32.

FOLDING POCO CAMERA.

No. 32 is the complete and favorite 5 x 7 Poco Folding. This is the same camera proper as No. 40, being made of polished mahogany, the mountings of polished and lacquered brass, and is covered with best morocco grain leather and has leather bellows.

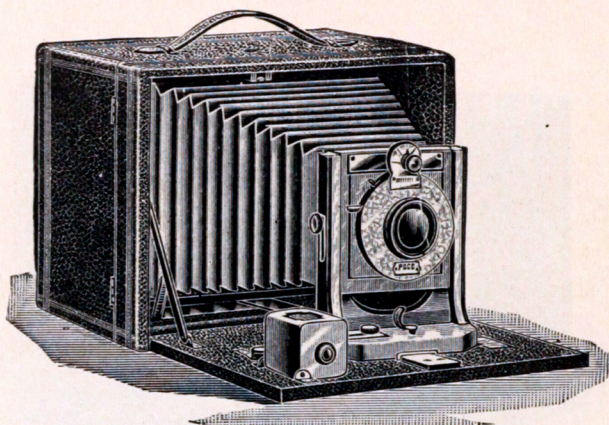
It is fitted with the R. C. M. Co.'s Symmetrical lens and Poco Shutter, which is the perfection of all shutters; scientific in principle and simple in construction. It works between the lenses and opens and closes in parallel lines giving perfect illumination to the plate. When setting the shutter the blades do not open, thus making it perfectly safe.

It has double swing back, rising and sliding front, two tripod plates, spring-actuated ground-glass (which can be easily removed or replaced), and a large panel at the back to allow focusing on the ground-glass. All swings are at the center, which is optically correct, and when in use it does not change the correctness of the focusing scale.

No. 32 measures $9\frac{1}{4} \times 5\frac{1}{4} \times 7$ inches, and weighs $3\frac{3}{4}$ pounds. The $6\frac{1}{2} \times 8\frac{1}{2}$ and 8×10 sizes are constructed on the same principle as the 5×7 . The $6\frac{1}{2} \times 8\frac{1}{2}$ measures $11 \times 6\frac{1}{4} \times 8\frac{1}{4}$ inches, and weighs $4\frac{1}{4}$ pounds. The 8×10 measures $12\frac{3}{4} \times 6\frac{3}{4} \times 10\frac{1}{2}$, and weighs 5 pounds.

Pneumatic release fitted to any size shutter \$2.00 extra.

PRICE.	No. 32, 5x7	No. 42, $6\frac{1}{2} \times 8\frac{1}{2}$	No. 50, 8x10
Complete, including Lens, Shutter, and one Plate-Holder,	\$32.00	\$42.00	\$50.00
With Shutter, other lenses fitted, - - - -	28.00	35.00	40.00
Without Lens or Shutter, - - - -	20.00	25.00	30.00
R. C. M. Co. Wide Angle Lens fitted to same shutter, -	12.00	15.00	18.00
Dry-Plate Holders, - - - -	1.25	1.50	1.75
Roll-Holder, - - - -	12.50	16.00	20.00
Leather Case and Shoulder Strap, - - - -	3.00	4.00	5.00



No. 27.

FOLDING POCO CAMERA.

Nos. 27 and 18 are made on the same general design as Nos. 40 and 32, and are the same size.

No. 27 takes a 5 x 7 picture. It is covered with best morocco grain leather, the front and view finder are made of polished mahogany. The mountings are all of polished and lacquered brass.

It has double sliding front, swing back (swinging vertically when plate stands vertical), spring-actuated ground-glass, which can be easily removed or replaced, double reversing view finder, two tripod plates, and large panel at the back to allow focusing on the ground-glass when desired. The swing is at the center, which is optically correct, and when in use does not change the correctness of the focusing scale.

It has a cone shaped leather bellows. It is fitted with POCO Shutter and R. C. M. Co.'s Rapid Rectilinear lens.

Price, including camera, lens, shutter, and one dry-plate holder, \$27 00.

Pneumatic release fitted to shutter, - - - - - 2.00

The R. C. M. Co.'s Wide Angle Symmetrical lens can be fitted to the shutter for - - - - - 12.00

No. 18.

Takes a 5 x 7 picture, and is the same as number 27 with the exception of the front, which contains the shutter and is fitted with R. C. M. Co.'s Single Achromatic lens.

The shutter is perfect, working for time or instantaneous exposures, and does not expose the plate while setting.

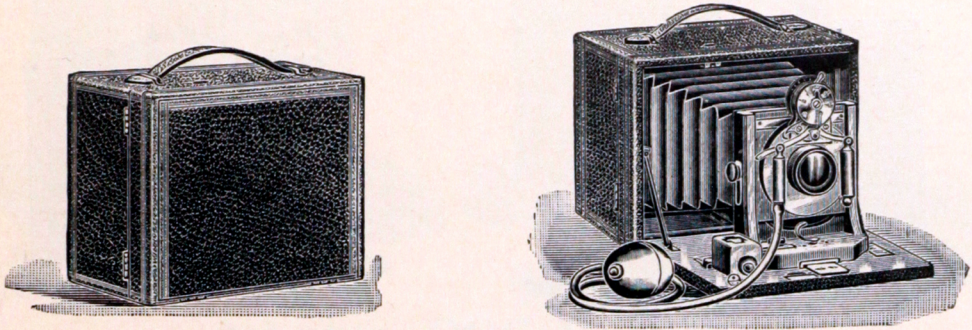
It measures the same when closed as No. 27, and weighs 3 1/2 pounds.

Price, including camera, lens, shutter, and one double dry-plate holder with rubber slides, - - - - - \$18.00

Extra Holder, with rubber slides, for No. 18 or No. 27, - 1.25

Roll-Holder, " " " - 12.50

Leather Case and Shoulder Strap, " " " - 3 00



No. 35. 4 x 5.

FOLDING POCO CAMERA.

No. 35 is our regular 4 x 5 Poco made of polished mahogany, with mountings of polished and lacquered brass, covered with best morocco grain leather and leather bellows.

It is fitted with Bausch & Lomb Iris Diaphragm Shutter with pneumatic release, including rubber tube and Bulb. The range of automatic exposure is from $\frac{1}{100}$ of a second to three seconds. Longer exposures are made by pressing the bulb to open and again to close the shutter. The diaphragm is regulated by simply turning a dial. The shutter can be used with or without bulb.

The lens is our high grade Rapid Symmetrical.

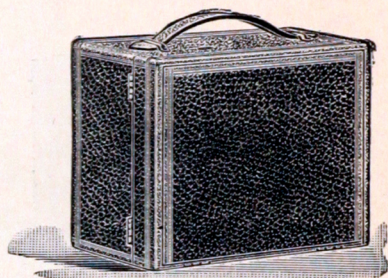
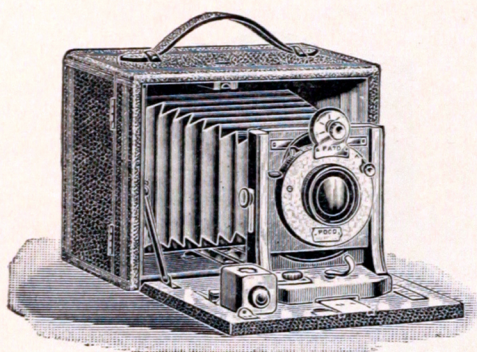
The camera has rising and sliding front, double swing back; both swings at center, and when in use does not change the correctness of the focusing scale.

It has spring-actuated ground-glass (which can be easily removed or replaced), two tripod plates, reversing view finder, and large panel at the back to focus on the ground-glass when desired.

When closed it measures but $5\frac{1}{2} \times 4\frac{3}{4} \times 6\frac{3}{4}$ inches and weighs but $2\frac{1}{4}$ pounds. THE SMALLEST 4 x 5 HAND CAMERA IN THE MARKET.

It is made in one size to hold four double dry-plate holders or roll-holder.

Price of camera complete, including shutter, lens, and one double dry-plate holder, with rubber slides,	-	-	-	\$35.00
Extra Plate-Holders, with rubber slides,	-	-	-	1.00
Roll-Holder,	-	-	-	10.00
R. C. M. Co. Wide Angle Lens fitted to same shutter,	-	-	-	10.00
Leather Case and Shoulder Strap,	-	-	-	2.50



No. 25. 4 x 5.

FOLDING POCO CAMERA.

This is our regular 4 x 5 Poco Folding that has been so popular during the past season. For this season there are decided improvements, it now being as near perfect as it is possible to construct it.

It is made of polished mahogany, mountings of polished and lacquered brass, and is covered with best morocco grain leather with leather handle and bellows.

It is fitted with R. C. M. Co.'s Rapid Symmetrical lens and POCO SHUTTER, which is the perfection of all shutters; scientific in principle and simple in construction. It works between the lenses and opens and closes in parallel lines, giving perfect illumination to the full plate. When setting the shutter the blades do not open, thus making it perfectly safe.

It has rising and sliding front, double swing back, both swings at the center, and when in use does not change the correctness of the focusing scale.

It has spring-actuated ground-glass (which can be easily removed or replaced), two tripod plates, reversing view finder, and large panel at the back to allow focusing on the ground-glass if desired.

No. 25 is the same as No. 35, excepting the shutter.

It measures when closed but $5\frac{1}{2} \times 4\frac{3}{4} \times 6\frac{3}{4}$ inches, and weighs $2\frac{1}{4}$ pounds. THE SMALLEST 4 x 5 HAND CAMERA IN THE MARKET.

It is made to hold four dry-plate holders or roll-holder.

Price of camera, including shutter, lens, and one double plate-holder, with rubber slides, - - - - -

\$25.00

Without Lens or Shutter, - - - - -

15.00

Double Plate-Holders, each, - - - - -

1.00

Roll-Holder, - - - - -

10.00

Pneumatic Release, - - - - -

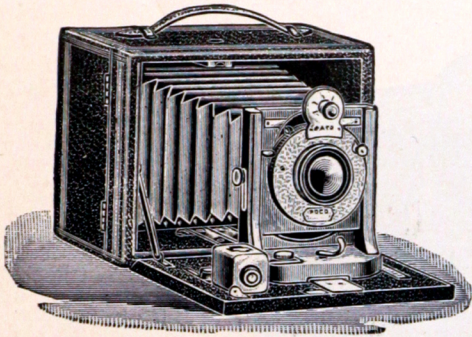
2.00

R. C. M. Co. Wide Angle Lens fitted to shutter, - - - - -

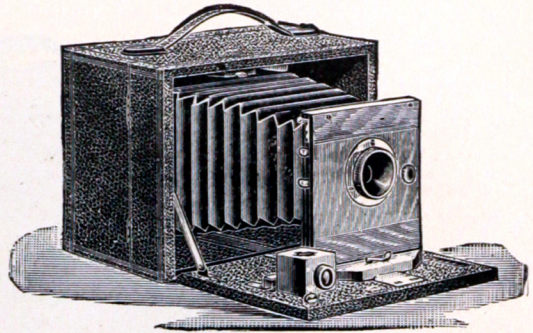
10.00

Leather Case and Shoulder Strap, - - - - -

2.50



No. 20. 4x5.



No. 12. 4x5.

FOLDING POCO CAMERA.

No. 20 is made on the same general plan as No. 25, and is the same size.

It is covered with best morocco grain leather with leather handle and bellows. The front and view finder are made of polished mahogany, and the mountings are polished and lacquered brass.

It has double sliding front, swing back swinging at center, spring-actuated ground-glass, double reversing view finder, two tripod plates, and large panel at the back to focus on the ground-glass if desired.

These are made in two sizes, one to hold three double dry-plate holders and the other to hold five double dry-plate holders or roll-holder. The price is the same for either size. If the size is not specified when ordered the one holding five double dry-plate holders or roll-holder will be sent.

It is fitted with the R. C. M. Co.'s Rapid Rectilinear lens and POCO SHUTTER.

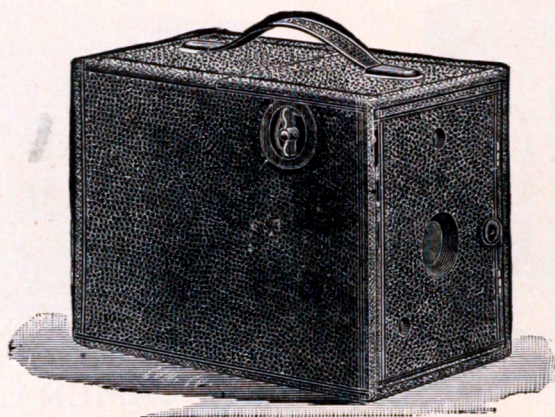
Price, including camera, lens, shutter, and one double dry-					
plate holder, with rubber slides,	-	-	-	-	\$20.00
Without Lens or Shutter,	-	-	-	-	12.00
Pneumatic Release, extra,	-	-	-	-	2.00

No. 12.

Takes a 4x5 picture, and is the same as No. 20, with the exception that it has no swing back or rising front. The front is made of polished mahogany and contains the shutter.

It is fitted with R. C. M. Co's Single Achromatic lens. The shutter is perfect working for time or instantaneous exposures, and does not expose the plate when setting.

Price, including camera, shutter, lens, and one double dry-					
plate holder, with rubber slides,	-	-	-	-	\$12.00
Double Plate-Holders, each, for No. 12 or No. 20,	-	-	-	-	1.00
Roll-Holder,	-	-	-	-	10.00
Leather Carrying Case and Shoulder Strap,	-	-	-	-	2.50



THE EXTENSION POCO.

In introducing the Poco to the trade we can freely say we have the best all around camera in the market. We constructed it with a view to compactness, and to greatly surpass the latest improvements of all hand cameras now in the market, and we have at least accomplished our expectations.

We have spared neither pains nor expense in completing the Poco ready for the market, and now we have a model of perfection, neatness, compactness and simplicity.

It has mahogany finish on the inside, and is covered with best morocco grain leather, with leather handle.

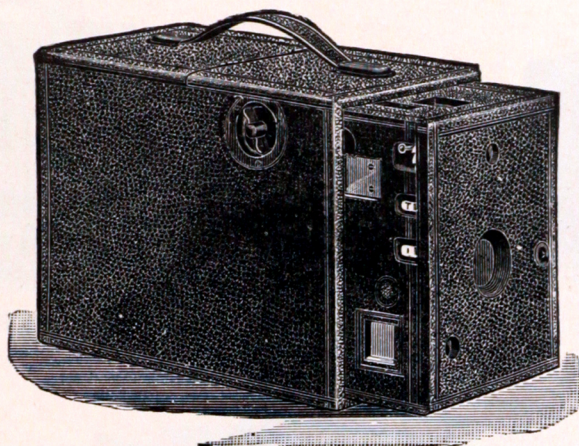
The only working parts visible when not in use are the focusing lever and button for setting shutter. When focused for taking the picture the view finders, speed regulator, instantaneous and time press buttons come into view.

It has swinging back (as the swing works from the center of the plate the focus as indicated by the focusing dial is not disturbed), two large brilliant view finders and two tripod plates for taking views either vertical or horizontal, by hand or on a tripod.

It measures only $5\frac{1}{2} \times 6\frac{1}{2} \times 8\frac{3}{4}$ inches, yet holds five double plate-holders or roll-holder containing 100 exposures, and weighs but $2\frac{3}{4}$ pounds.

The front is hinged so as to admit of cleaning or arranging the lens.

The shutter is the simplest and nearest perfection of any ever placed on a hand camera, in setting it the plates are not exposed; it is easily regulated for different speeds; it has two press-buttons, one marked **I** for instantaneous, and one marked **T** for time exposures. There are no levers or other unnecessary appliances, but the working parts are few and simple.



Showing Poco Extended.

Only high grade lenses are used, both the achromatic and rapid symmetrical are fitted with rotary stops.

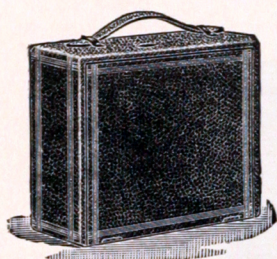
The ground-glass is spring-actuated, and is moved back by the holder when placing the holder in position, this is very convenient, as one hand must hold the camera while the other adjusts the holder.

The focusing scale is accurately marked and is shown on the top by white figures on a black back ground ; there is a hinged panel at the back to allow focusing on the ground-glass if desired.

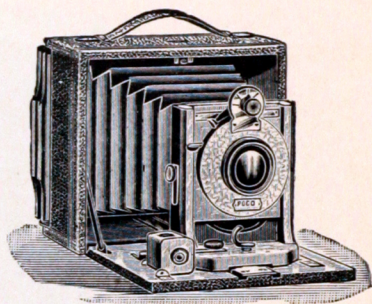
The Poco is made in 4 x 5 size only.

Price, including one Double Plate-Holder,	-	\$18.00
Extra Holders, each	- - - - -	1.00
Roll-Holder,	- - - - -	10.00
Extra for Rapid Symmetrical Lens,	- - - - -	6.00
“ Gundlach Rapid Rectigraphic Lens,	- - - - -	12.00
Roll Film for Poco, 50 exposures,	- - - - -	3.00
“ “ “ “ 100 “	- - - - -	6.00
Leather Case and Shoulder Strap,	- - - - -	3.00

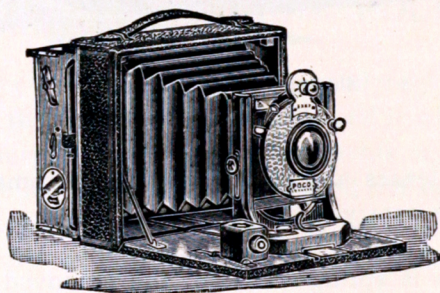
Poco takes 5-inch rolls.



Closed.



Open with Plate-Holder.



Open with Roll-Holder.

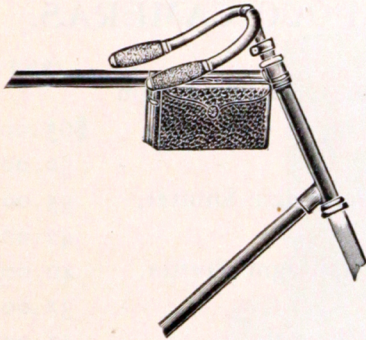
THE CYCLE POCO.

This is the smallest 4 x 5 camera in the market. It measures but $2\frac{3}{8} \times 6 \times 5\frac{1}{4}$ inches, and weighs but $1\frac{5}{8}$ pounds, yet has all the strength and facilities of other cumbersome cameras of the past.

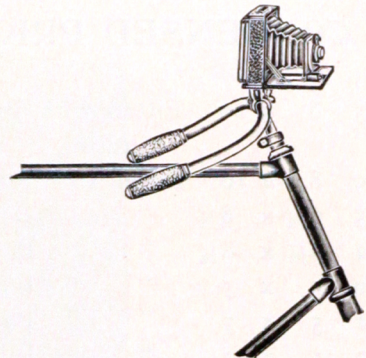
It is especially designed to be used and carried on the bicycle, yet it meets all the requirements of the huntsman, canoeist, fisherman, and all who desire a perfect camera to take up the smallest space possible.

It is made in the very best manner, of polished mahogany, covered with best morocco grain leather, with leather handle and bellows.

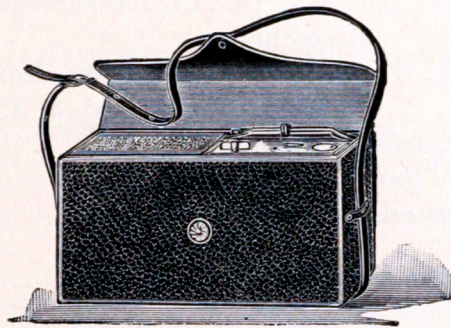
It is fitted with R. C. M. Co.'s Rapid Symmetrical lens and Poco Shutter.



Attached for Carrying.



Attached for Use.



Packed in Case.

THE CYCLE POCO.

The back of the camera proper acts as a spring back to hold the plate-holders in position also for a ground-glass screen (a thin panel covering the ground-glass to protect it from breaking.) It is also removable and a roll-holder may be attached.

It has rising and sliding front, double reversible view finder, and can be placed on the tripod or bicycle either vertically or horizontally.

It is put up in a neat leather case, holding the camera, lens, shutter, and five dry plate-holders ; or roll-holder and one dry plate-holder.

The case can be strapped on the bicycle the same as a tool bag, or can be carried on the back with the shoulder strap.

Price of camera complete, which includes lens, shutter, one plate-holder with rubber slides, and leather carrying case, - - - - -	\$25.00.
Price, double plate-holders, each, with rubber slides -	1.00
Price, roll-holder, - - - - -	10.00
Bicycle Clamp, - - - - -	1.00

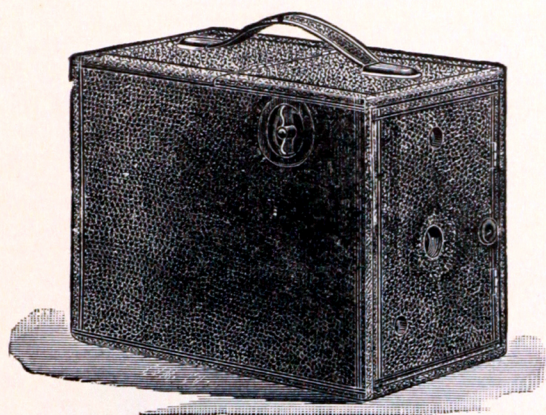
CONDENSED PRICE LIST OF POCO CAMERAS.

NO.	SIZE.		PRICE
65	8 x 10	Fitted with Bausch & Lomb Opt. Co.'s Diaphragm Shutter, - - - - -	\$65.00
50	8 x 10	Fitted with Poco Shutter, - - - - -	50.00
55	6½ x 8½	" " B. & L. Opt. Co.'s Diaphragm Shutter, - - - - -	55.00
42	6½ x 8½	" " Poco Shutter, - - - - -	42.00
40	5 x 7	" " B. & L. Opt. Co.'s Diaphragm Shutter, - - - - -	40.00
32	5 x 7	" " Poco Shutter, - - - - -	32.00
27	5 x 7	" " R. R. Lens and Poco Shutter, - - - - -	27.00
18	5 x 7	" " Rochester Shutter and S. A. Lens, - - - - -	18.00
35	4 x 5	" " B. & L. Opt. Co.'s Diaphragm Shutter, - - - - -	35.00
25	4 x 5	" " Poco Shutter, - - - - -	25.00
20	4 x 5	" " Poco Shutter and R. R. Lens, - - - - -	20.00
12	4 x 5	" " Rochester Shutter and S. A. Lens, - - - - -	12.00
		The Extension Poco, - - - - -	18.00
		Cycle Poco, - - - - -	25.00
4	x 5	Dry Plate-Holders, Rubber Slides, - - - - -	1.00
5	x 7	" " " " " " - - - - -	1.25
6½	x 8½	" " " " " " - - - - -	1.50
8	x 10	" " " " " " - - - - -	1.75
4	x 5	Roll-holders, - - - - -	10.00
5	x 7	" " - - - - -	12.00
6½	x 8½	" " - - - - -	14.00
8	x 10	" " - - - - -	16.00
		B. & L. O. Co.'s Stereo. Lenses and Diaphragm Shutters fitted to any 5 x 7 - - - - -	38.00

Order Poco Folding Cameras by Number.

PRICE LIST FOR FINISHING PICTURES.

SIZE PICTURE.	DEVELOPING, PRINTING, AND FINISHING.	DEVELOPING ONLY.	PRINTING AND FINISHING.
4 x 5	13	5	10
5 x 7	16	6	13
5 x 8	16	6	13
6½ x 8½	20	8	17
8 x 10	30	10	22
11 x 14	40	15	30



ROCHESTER HAND CAMERA.

This camera is remodeled from the Extension Poco, some of the details being left off, yet in no way injuring its usefulness, and it has the same compact features. It measures but $5\frac{1}{2} \times 6\frac{1}{2} \times 8\frac{1}{4}$ inches, yet holds five double plate-holders, or roll-holder, containing 100 exposures, and weighs but $2\frac{3}{4}$ pounds.

It is covered with best morocco grain leather, and has a leather handle. The only working parts visible when not in use are the focusing lever and button for setting shutter. When focused for taking the picture the view finders, speed regulator, instantaneous and time press buttons come into view. It has two large brilliant view finders and two tripod plates for taking views either vertical or horizontal on a tripod if desired.

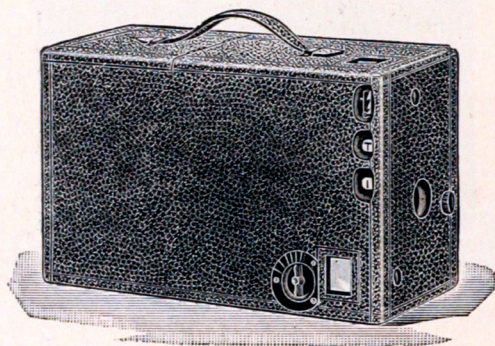
In setting the shutter (like in the Extension Poco), the plates are not exposed; it is easily regulated for different speeds; it has two press buttons, one marked **I** for instantaneous, and one marked **T** for time exposures. There are no levers or other unnecessary appliances, but the working parts are few and simple. It is fitted with a high grade single achromatic lens.

The ground-glass is spring-actuated, and is moved back by the holder when placing the holder into position, this is very convenient, as one hand must hold the camera, the other the holder; therefore, the advantage.

The focusing scale is accurately marked, and is shown on the top by white figures on a black background; there is a hinged panel at the back to allow focusing on the ground-glass if desired.

The Rochester is made in 4 x 5 size only.

Price, including one Double Plate-Holder,	-	-	\$12.00
Extra Holders, each	-	-	1.00
Roll-Holder,	-	-	10.00
Roll Film for 50 exposures,	-	-	3.00
“ “ “ 100 “	-	-	6.00
Leather Case and Shoulder Strap,	-	-	3.00



R. C. M. CO.'S SPECIAL CAMERA.

This is designed for and is a first-class camera at a low price. It is well made, light and compact, exceedingly neat in appearance and possesses merits only found heretofore in higher priced cameras.

It is covered with morocco grain leather and has a leather handle. All working parts are flush with side of camera box.

It has two large brilliant view finders, two tripod plates, and large panel at the back to focus on the ground-glass. The focusing scale is accurately marked for each lens that accompanies the camera.

It has a high grade Rapid Achromatic lens.

The Shutter is the ROCHESTER the simplest and nearest perfect of any ever placed on a hand camera. In setting it, the plates are not exposed, and it is easily regulated for different speeds.

It has two press buttons one marked **I** for instantaneous and one marked **T** for time exposures.

There are no levers or other unnecessary appliances and the working parts are few and simple. Size $5\frac{1}{2} \times 11 \times 6\frac{3}{4}$ inches.

It is only made in the 4 x 5 size which holds five double dry-plate holders or roll-holder. Price, complete, with one holder,

holder,	-	-	-	-	-	-	\$8.00
Double Plate-Holders, each,	-	-	-	-	-	-	1.00
Roll-Holders,	-	-	-	-	-	-	10.00

Rochester Holder.

This holder is the smallest and easiest of manipulation of any now in the market. It is made of best seasoned cherry, has heavy hard rubber slides.

Price, 4 x 5,	-	-	-	-	-	-	\$1.00
" 5 x 7,	-	-	-	-	-	-	1.25
" 5 x 8,	-	-	-	-	-	-	1.25

Gem Holders.

Neat and effective, they clamp the plate firm in place and allow for variation of lengths.

Price, 6½ x 8½,	-	-	-	-	-	\$1.50
" 8 x 10,	-	-	-	-	-	1.75
" 10 x 12,	-	-	-	-	-	2.75
" 11 x 14,	-	-	-	-	-	3.50

Book Holders.

14 x 17,	\$6.00		17 x 20,	\$7.00
----------	--------	--	----------	--------

Holder Slides.

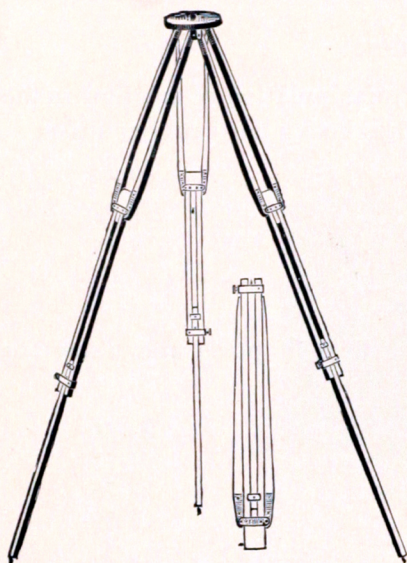
SIZE.	PRICE.	SIZE.	PRICE.
3¼ x 4¼	\$0.15	8 x 10	\$0.30
4 x 5	.15	10 x 12	.40
4¼ x 6½	.20	11 x 14	.50
5 x 7	.20	14 x 17	.60
5 x 8	.20	17 x 20	.75
6½ x 8½	.25		

Price is doubled when slides are made of hard rubber.

Kits.

These are made for holding small plates in larger plate-holders. They fit in the holder the same as an ordinary plate, and the opening at the center holds the plate.

SIZE OUTSIDE.	SIZE OF OPENING FOR PLATE.	PRICE.
4 x 5	3¼ x 4¼ — 3¼ x 4	\$0.20
5 x 7	3¼ x 4¼ — 4 x 5	.25
5 x 8	3¼ x 4¼ — 4 x 5 — 4¼ x 6½	.25
6½ x 8½	3¼ x 4¼ — 4 x 5 — 5 x 7 — 5 x 8	.30
8 x 10	5 x 7 — 5 x 8 — 6½ x 8½	.35
10 x 12	6½ x 8½ — 8 x 10	.40
11 x 14	8 x 10 — 10 x 12	.50



The Rochester Compact Tripod.

This tripod is made to fold and slide, and can be adjusted to any desired length.

It is made of best selected ash with all wearing parts of brass, thus giving it the utmost rigidity and strength.

When extended it is four feet ten inches long, while it is but twenty-three inches in length when closed.

The tripod-screw is arranged to always remain in the top.

No.	SIZE OF CAMERAS.	PRICE.
1	3 1/4 x 4 1/4 — 4 x 5 OR 4 1/4 x 6 1/2	\$3.00
2	5 x 7 — 5 x 8 OR 6 1/2 x 8 1/2	3.50
3	8 x 10 OR 10 x 12	4.00
4	11 x 14 OR 14 x 17	5.00

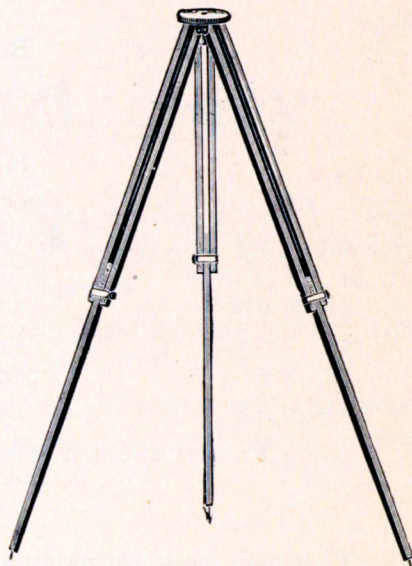
Rochester Sliding Tripod.

Is made of best selected ash in three pieces, the center one sliding within the outer ones, and can be clamped at any desired position.

The top is made of wood covered with soft cloth to keep from marring the camera.

The legs are fastened to the top which leaves the tripod always together and perfectly rigid.

Price No. 1	for all sizes up to	5 x 8	\$2.25
" " 2	" " "	8 x 10	2.50
" " 3	" " "	10 x 12	3.00
" " 4	" " "	11 x 14	3.50
" " 5	" " "	18 x 22	4.00

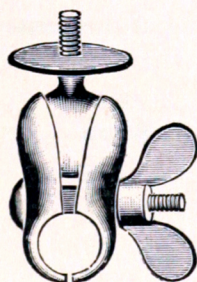


Bicycle Clamp.

It is indispensable to wheelmen who use a camera. It is simple to adjust and will fit any wheel; is made of brass nicely nicked; as it is light it may always remain on the wheel if desired.

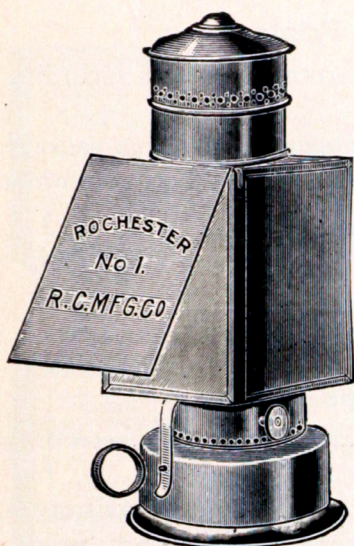
When ordering state what make of camera is to be used, otherwise we will send to fit our make.

Price, - - - - - \$1.00



Lamson Camera Carrier.

For carrying camera on the bicycle, - - - - - \$2.00



Rochester Lamp.

We place broad claims on this lamp for perfection of light, combustion, evenness of flame, whether turned high or low, and absence of smoke or smell. It is made on the lately improved plan of central draft, giving a volume of light never before obtained in this style of lamp.

It is regulated from the outside, allowing it to be turned up or down without opening the lantern.

Price, No. 1 fitted with best Ruby and Orange Glass, - - - \$1.00

Price, No. 2 fitted with best Ruby and Orange Glass, - - - 1.50

Pocket Candle Lamps, - - - \$0.50

Wooden Drop Shutter.

This is made of mahogany with cherry slide, the opening of the slide is on scientific principles. The opening for the lens can be cut any size, and will be sent uncut if the size is omitted on the order.

These are made in three sizes.

NO.		SIZE.	PRICE.
1	The largest size opening to be obtained,	1 3/4 in.,	- \$1.00
2	" " " " " "	2 1/2 in.,	- 1.00
3	" " " " " "	3 1/4 in.,	- 1.00

View-Finder.

This is made of mahogany, it is small and can be fastened to any part of a camera, the lens is placed in front and the view is seen from the top.

Price, - - - \$1.50

Negative Preservers.

These are envelopes made of strong manilla paper, the proper size for the negative; they are open at the end for inserting the negative, and have space cut for admitting the thumb and finger in removing it.

On the face are printed lines for name, number, description and remarks. They are invaluable for preserving the negative from dust, scratches, etc. Put up in packages of 50 each.

3 1/4 x 4 1/4, per package,	\$0.20	5 x 8, per package,	\$0.30
4 x 5, " "	.20	6 1/2 x 8 1/2, " "	.35
4 1/4 x 6 1/2, " "	.25	8 x 10, " "	.45
5 x 7, " "	.30	10 x 12, " "	.75

Printing Outfit for Silver Prints.

This outfit consists of the following articles, arranged in sizes according to the size of camera used.

One printing frame, one package sensitized albumen paper, one package card mounts, one-half pint jar Rochester paste, one 15 gr. bottle chloride gold, one 2 oz. bottle Acetate Soda.

SIZE.	PRICE.	SIZE.	PRICE.
4 x 5	\$2.15	5 x 8	\$2.85
4 1/4 x 6 1/2	2.40	6 1/2 x 8 1/2	3.30
5 x 7	2 70	8 x 10	4.20

Printing Outfit for Aristotype Paper.

This outfit consists of the following articles, arranged in sizes according to the size of camera used.

One printing frame, one package Aristotype paper, one bottle Aristotype toning solution, one-half pint jar Rochester paste, one package card mounts.

SIZE.	PRICE.	SIZE.	PRICE.
4 x 5	\$1.65	5 x 8	\$2.10
4 1/4 x 6 1/2	1.80	6 1/2 x 8 1/2	2.55
5 x 7	1.95	8 x 10	3.10

Developing Outfit.

The developing outfit consists of the following articles, arranged in sizes according to the size of camera used.

Two japanned tin developing trays, one ruby lamp, one box developer, one pound Hyposulphite Soda, one 4 oz. graduated glass.

SIZE.	PRICE.	SIZE.	PRICE.
4 x 5	\$2.30	5 x 8	\$2.40
4 1/4 x 6 1/2	2.40	6 1/2 x 8 1/2	2.50
5 x 7	2 40	8 x 10	2.70



Rochester Mounting Paste.

Superior quality for mounting photographs, it never sours.

SIZE.	PRICE.	SIZE.	PRICE.
1/2 Pint jar	\$0.20	1 Pint jar	\$0.25

Graduated Glasses.

For measuring liquids.

SIZE.	PRICE.	SIZE.	PRICE.
Minim.	\$0.25	4 OZ.,	\$0.30
1 OZ.	.20	8 "	.40
2 "	.25	16 "	.75



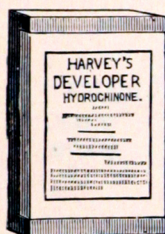
Harvey's Pyro-Potash.

(CONCENTRATED.)

As a general developer this cannot be surpassed. You have perfect control of the plate, no matter what length of exposure has been given.

Put up in two bottles, in cardboard box. Sufficient amount to develop six or seven dozen 4 x 5 plates.

Per box, - - - - \$0.50



Harvey's Hydrochinone.

(CONCENTRATED.)

Gives clear black and white negatives.

Desirable for transparencies.

Will not stain the fingers and can be used repeatedly until the strength is gone.

Put up in two bottles, in cardboard box. Sufficient amount to develop six or seven dozen 4 x 5 plates.

Per box, - - - - \$0.50



Harvey's Eikonogen.

(CONCENTRATED.)

Gives soft, brilliant negatives, easy of manipulation, can be used repeatedly until strength is gone.

Put up in one bottle, in cardboard box. Sufficient amount to develop six or seven dozen 4 x 5 plates.

Per box, - - - - \$0.50

Harvey's Eikone Developer.

Gives clear, crisp negatives, yet with a degree of softness which brings it as near perfection as possible. Is put up in one solution.

Price, 8 oz. bottle, \$0.30 | Price, 16 oz. bottle, \$0.50

Harvey's Toning Solution.

FOR TONING ARISTOTYPE PAPER.

Can be used repeatedly until strength is gone.

8 oz. bottles, - \$0.40 | 16 oz. bottles, - \$0.60

Harvey's Intensifier.

(CONCENTRATED.)

Invaluable for strengthening weak negatives.

4 oz. bottle, - \$0.25 | 8 oz. bottle, - \$0.40

Harvey's Negative Varnish.

Negatives from which a quantity of prints are to be made should always be varnished to prevent injury to the film.

4 oz. bottle, - \$0.30 | 8 oz. bottle, - \$0.50

Absorbent Cotton.

Put up in the following size packages.

SIZE.	PRICE.	SIZE.	PRICE.
2 OZ.	\$0.20	8 oz.	\$0.50
4 "	.30	1 lb.	.80

Bristle Brushes.

For mounting photographs.

SIZE.	PRICE.	SIZE.	PRICE.
1 inch wide,	\$0.10	2 1/2 inch wide,	\$0.25
1 1/2 " "	.15	3 " "	.30
2 " "	.20		

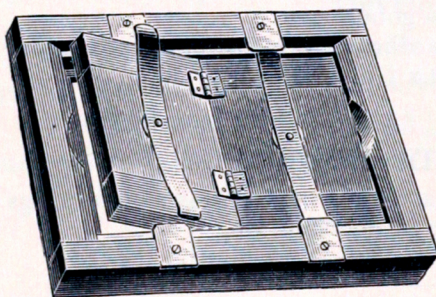
Camel Hair Brushes.

This style of brush is very soft and adapted for dusting off plates.

SIZE.	PRICE.	SIZE.	PRICE.
1 inch wide	\$0.25	2 1/2 inch wide	\$0.60
1 1/2 " "	.40	3 " "	.80
2 " "	.50		

Blotting Paper.—(For drying prints.)

Size 9 x 12 inches, price per dozen sheets,	-	-	-	\$0.30
" 12 x 19 "	"	"	"	.55
" 19 x 24 "	"	"	"	1.10



Rochester Printing Frame.

These are made of cherry, the springs are of the best spring brass, riveted to the back, and a washer placed between the spring and back, allowing the spring to move freely without defacing the wood, the ears are set flush with the wood to prevent defacing them when piled one upon another.

SIZE.	PRICE.	SIZE.	PRICE.
3 1/4 x 4 1/4	\$0.40	6 1/2 x 8 1/2	\$0.60
4 x 5	.40	8 x 10	.75
4 1/4 x 6 1/2	.45	10 x 12	1.00
5 x 7	.50	11 x 14	1.75
5 x 8	.55		

Glass Funnels.

SIZE.	PRICE.
1/2 Pt. - - -	\$0.15
1 " - - -	.20
1 Qt. - - -	.25

Focusing Cloths.

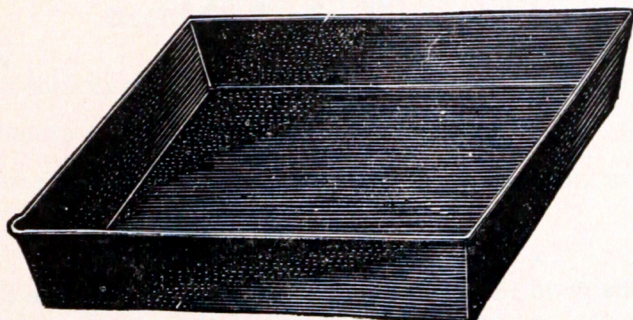
Perfection, - - -	\$0.40
Gossamer, - - -	.50
Velvet, - - -	1.00

Hand Scales.

For weighing grains and drachms.

6 inch beam, 2 1/4 inch brass pans, - - -	\$0.75
-------------------------------------------	--------

Rubber Trays.



Polished Hard Rubber.

SIZE.	PRICE.	SIZE.	PRICE.
4 x 5	\$0.30	6½ x 8½	\$0.75
5 x 8	.60	8 x 10	1.10

Deep Rubber Trays.

SIZE.	PRICE.	SIZE.	PRICE.
4 x 5	\$0.60	6½ x 8½	\$0.90
5 x 8	.80	8 x 10	1.25

Glass Trays.

SIZE.	PRICE.	SIZE.	PRICE.
4 x 5	\$0.30	5 x 8	\$0.40

Japan Iron Developing Trays.

SIZE.	PRICE.	SIZE.	PRICE.
4 x 5	\$0.20	6½ x 8½	\$0.30
5 x 8	.25	8 x 10	.40

Agate Ware Toning Trays.

SIZE.	PRICE.	SIZE.	PRICE.
7 x 9	\$1.00	10 x 12	\$1.50
8 x 10	1.25	12 x 14	1.75



Ground Glass for Cameras.

SIZE.	PRICE.	SIZE.	PRICE.
3¼ x 4¼	\$0.15	6½ x 8½	\$0.25
4 x 5	.15	8 x 10	.35
4¼ x 6½	.20	10 x 12	.50
5 x 7	.20	11 x 14	.70
5 x 8	.20	14 x 17	1.00

Glass Forms.

SIZE.	PRICE.	SIZE.	PRICE.
Stereo. Arched top	\$0.50	5 x 7 sqr. corners	\$0.60
3¼ x 4¼ sqr. corners	.40	5 x 8 "	.70
4 x 5 "	.45	6½ x 8½ "	.80
Cab. "	.50	8 x 10 "	1.00

Ready Sensitized Albumen Paper.

This is the best sensitized paper in the market.

Put up in packages of 24 sheets.

SIZE.	PRICE PER PKG.	SIZE.	PRICE PER PKG.
3¼ x 4¼	\$0.35	5 x 8	\$0.85
4 x 5	.45	6½ x 8½	1.10
4¼ x 6½	.60	8 x 10	1.65
5 x 7	.80		

Rochester Aristotype Paper.

A BRILLIANT PRINTING-OUT PAPER.

Has all the good features to be desired, and none of the bad ones.

Any tone can be produced at the will of the operator, clear whites and a fullness of detail that will surprise you.

It is guaranteed to keep one year and in any climate.

It need not be toned immediately after printing, if not convenient to do so.

Does not yellow with age, and pictures are permanent.

Very simple in manipulation. Full directions with each package.

The ingredients for the baths can be readily procured from any regular stock dealer, at small expense, and old dishes may be used.

When ordering, be sure to specify "Rochester." Try it, that you may know personally of its superior merits.

If your Stock Dealer does not keep it, send \$2.00 for sample gross of cabinets, or 10 cents for sample of 4 x 5 by mail.

SIZE.	PRICE PER DOZEN.	SIZE.	PRICE PER DOZEN.
3¼ x 4¼	\$0.20	5 x 7	\$0.40
4 x 5	.25	5 x 8	.45
Cabinets trimmed	.25	6½ x 8½	.70
4 x 6	.30	8 x 10	.90
4¼ x 6½	.35		

Aristotype toning solution, 40 cents per bottle.

Rochester Blue Paper.

(Ferro Prussiate.)

This is a very superior paper.

We claim that it prints quicker and washes out better than any other.

That it will keep in perfect condition for three months, no matter what its appearance may be, provided our directions are followed.

That it yields a density of blue never before attained.

That it is the only paper sold under a positive guarantee to be as represented.

Put up in packages of twenty-four sheets.

SIZE.	PRICE PER PKG.	SIZE.	PRICE PER PKG.
3¼ x 4¼	\$0.20	5 x 8	\$0.35
4 x 5	.20	6½ x 8½	.40
4¼ x 6½	.25	8 x 10	.60
5 x 7	.30	18 x 22 rolls of 1 doz. sheets,	1.50

Blue paper in rolls of 1 yard wide and 10 yards long, price, \$3.00.

Bromide Paper—Eastman's.

- “A”—Smooth Surface, thin, for proofs and positive printing.
 “B”—Smooth surface, heavy, for positive printing and enlarging.
 “C”—Rough surface, heavy, for enlarging and making in crayon.

PRICE THE SAME FOR A, B, or C.

3¼ x 4¼	per doz.,	\$0.25	5 x 8	per doz.,	\$0.75
4 x 5	“	.40	6½ x 8½	“	1.10
4¼ x 6½	“	.55	8 x 10	“	1.50
5 x 7	“	.65	10 x 12	“	2.25

Eastman Films.

ON ROLLS FOR USE IN ROLL-HOLDERS FOR POCO.

5 in. for No. 18 and No. 27 Poco, 27 Ex.	\$3.00	54 Ex.	\$6.00
5 “ “ 12 “ “ 20 “ 48 “	3.00	96 “	6.00
5 “ “ 25 “ “ 35 “ 48 “	3.00	—	—
7 “ “ 32 “ “ 40 “ 37 “	4.00	—	—
6½ “ “ 42 “ “ 55 “ 24 “	4.00	48 “	8.00
8 “ “ 50 “ “ 65 “ 24 “	6.00	48 “	12.00

Films—Cut Sheets.

SIZE.			SIZE.		
4 x 5	per doz.,	\$0.80	6½ x 8½	per doz.,	\$2.10
5 x 7	“	1.40	8 x 10	“	3.00
5 x 8	“	1.50			

Film Carriers.

TO USE CUT SHEETS IN R. C. M. CO. HOLDERS.

SIZE.			SIZE.		
4 x 5	each,	\$0.15	6½ x 8½	each	\$0.25
5 x 7	“	.20	8 x 10	“	.30
5 x 8	“	.20			

ROCHESTER CAMERA MANUFACTURING CO.

Dry Plates.

We keep all the leading brands of dry plates, among which are New Eagle, Seed, Cramer, Stanley, Forbes, and Carbutts, with prices the same for all.

Our developers are universal and will work equally as well on any of the above named plates.

SIZE.	PRICE PER DOZEN.	SIZE.	PRICE PER DOZEN.
3¼ x 4¼	\$0.45	6½ x 8½	\$1.65
4 x 5	.65	8 x 10	2.40
4¼ x 6½	.90	10 x 12	3.80
5 x 7	1.10	11 x 14	5.00
5 x 8	1.25	Also larger sizes if desired.	

Card Mounts for Mounting Prints.

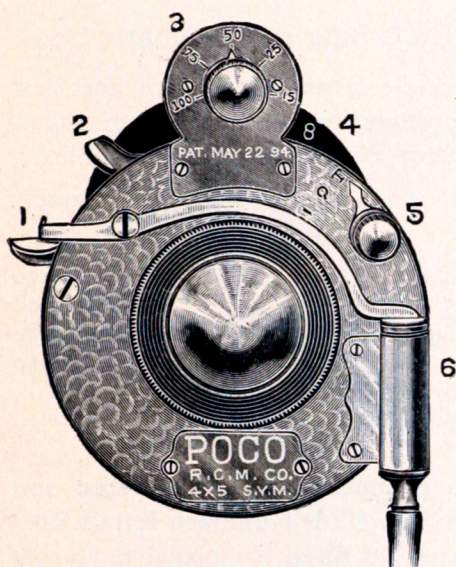
We have a large variety, but will only list the principal ones that the amateur will use.

Put up in packages of two dozen.

SIZE.	PRICE.	GOLD BEVELED EDGE.	
		PRIMROSE.	MAROON, CHOCOLATE OR BOTTLE GREEN.
ASSORTED COLORS.		PRICE.	PRICE.
4 x 5	\$0.20	\$0.35	\$0.50
Cabinet	.25	.40	.60
4¼ x 6½	.30	.45	.70
5 x 7	.35	.50	.75
5 x 8	.40	.60	.85
6½ x 8½	.55	.90	1.10
8 x 10	.75	1.25	1.60

Chemicals.

Acid, Citric, per oz.,	-	-	-	-	-	\$0.20
" Pyrogallic, Schering's, per oz.,	-	-	-	-	-	.50
Alum, Powdered, per lb.,	-	-	-	-	-	.25
Ammonium, Bromide, per oz.	-	-	-	-	-	.20
Eikonogen, per oz.,	-	-	-	-	-	.40
Glycerine, per oz.,	-	-	-	-	-	.20
Gold, Chloride (15 grain bottle),	-	-	-	-	-	.60
Hydrochinone, per oz.,	-	-	-	-	-	.40
Litmus Paper, per sheet,	-	-	-	-	-	.05
Rodinal 3 oz. bottle,	-	-	-	-	-	.75
Soda, Sulphite, (Crystals), per lb.,	-	-	-	-	-	.20
" Tungstate, per oz.,	-	-	-	-	-	.15
" Acetate, per oz.,	-	-	-	-	-	.10
" Hypo-Sulphite, (1 lb. box),	-	-	-	-	-	.10
" " (5 lb. box),	-	-	-	-	-	.35
" Carbonate, per lb.,	-	-	-	-	-	.15
Potash Carbonate,	-	-	-	-	-	.25
" Meta-bisulphite, per oz.,	-	-	-	-	-	.40
Magnesium Powder, per oz.,	-	-	-	-	-	.50
Blitz-Pulver, per package, 20 cartridges,	-	-	-	-	-	.60



THE POCO SHUTTER.

The Poco Shutter is the perfection of all shutters ; scientific in principle and simple in construction. It works between the lenses and opens and closes in parallel lines giving perfect illumination to the full plate. When setting the shutter the blades do not open, thus making it perfectly safe.

For a given size of lens, the shutter is the smallest in the market and rightly named Poco.

There are no working parts to get out of order as all are within the case. The only parts outside of the case are : No. 1, the press button ; No. 2, for setting the shutter ; No. 3, to regulate the speed from $\frac{1}{15}$ to $\frac{1}{100}$ part of a second ; No. 4, the rotary diaphragms ; No. 5 to regulate for time or instantaneous exposures ; No. 6, the pneumatic release.

Cut represents two-thirds actual size of 5 x 7.

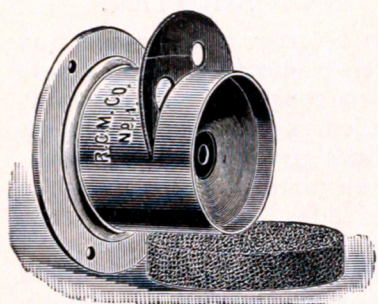
It can be fitted to lenses of other make and can be used with or without pneumatic release.

Price List.

Size.	Fitted to R. C. M. Co., or Gundlach Lenses.	With Pneumatic Release Fitted to R. C. M. Co. Lenses.	With Pneumatic Release Fitted to Lenses of other Manufacturers.
4 x 5	\$5.50	\$7.00	\$9.00
5 x 7	5.50	7.00	9.00
5 x 8	6.00	7.50	9.50
6½ x 8½	6.50	8.00	10.00
8 x 10	7.00	8.50	10.50

Miscellaneous Supplies.

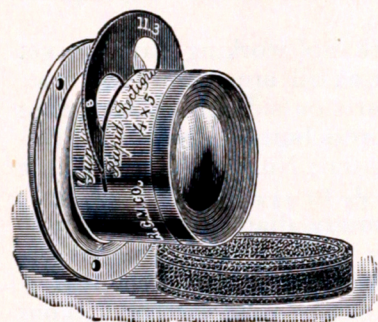
Flanges for R. C. M. Co's S. A. Lens,	-	-	-	\$0.50
" " R. C. M. Co's Symmetrical Lens,	-	-	-	.75
" " R. C. M. Co's Gundlach	"	-	-	.75
Caps " R. C. M. Co's	"	-	-	.40
" " R. C. M. Co's Symmetrical	"	-	-	.40
" " R. C. M. Co's S. A.	"	-	-	.25
Glass for No. 1 Rochester Lamp, Orange or Ruby	-	-	-	.10
" " No. 2 " " " "	-	-	-	.15
Tops for Tripods	-	-	-	.75
Screws for Tripods	-	-	-	.25
All Mill heads, Nuts and Screws	-	-	-	.25
Lens Boards for King Cameras,	-	-	-	.40
" " " View Cameras	-	-	-	.40
" " " Favorite Cameras	-	-	-	.25
" " " Poco Cameras	-	-	-	.25
" " " Poco Folding	-	-	-	.40
Spring Catches for holding in Lens Boards	-	-	-	.40



R. C. M. Co.'s Single Achromatic Lens.

Of all single lenses these give the best results for definition, and depth of focus. They are made as near perfect as possible.

NO.	SIZE OF PLATE.	LENGTH OF FOCUS.	PRICE.
1	4 x 5	6 inch	\$3 00
1 1/2	4 1/4 x 6 1/2	8 "	3.50
2	5 x 8	10 "	4.00
3	6 1/2 x 8 1/2	11 "	4.50
4	8 x 10	13 "	5.50



R. C. M. Co.'s Special Lens

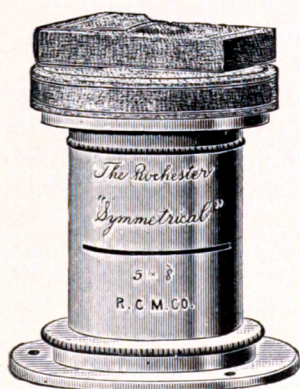
for detective cameras, being the latest and well known high grade Gundlach Rapid Rectigraphic lens, but fitted in special mounting with rotating diaphragms for our use.

Size 4 x 5, - Price, \$18.00

Rochester Symmetrical Lens.

Designed for Portraits, Groups, Architecture, Landscape and Instantaneous work.

We invite competition with this, it being equal to any lens now in the market. They will be sent on a guarantee to give satisfaction.



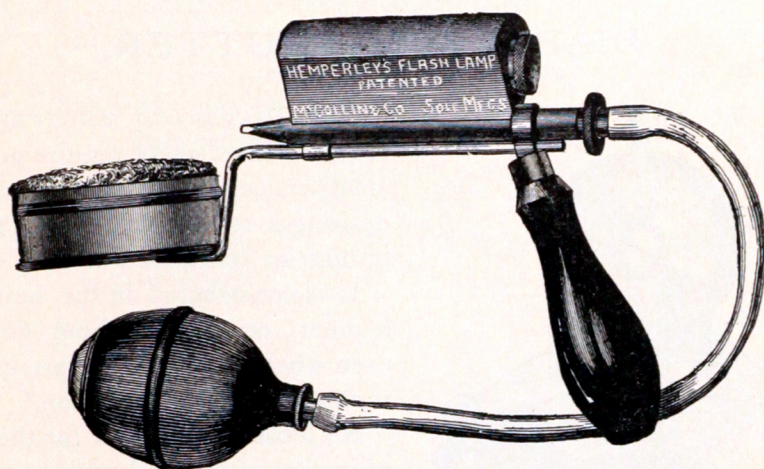
Size of Plate.	Diameters of Lenses.	Equivalent Focus.	Back Focus.	Price.
4 x 5	1 in.	6 1/4 in.	5 3/4	\$12 00
5 x 7	1 1/8 "	8 "	7 1/4	14.00
5 x 8	1 1/4 "	9 "	8 1/4	16.00
6 1/2 x 8 1/2	1 1/2 "	11 "	9 3/4	20.00
8 x 10	1 3/4 "	13 "	11 1/2	25.00
10 x 12	2 "	16 "	14 1/4	45.00
11 x 14	2 1/4 "	18 1/2 "	16 3/4	55.00
14 x 17	2 3/4 "	22 "	19 1/2	65.00
17 x 20	3 1/4 "	26 "	23	75.00

We handle several different makes of the high grade lenses as follows :

Darlot.
Gundlach.
Bausch & Lomb.

Voigtlander.
Suter.
Universal & Velox.
Zeiss Anastigmat.

Beck.
Ross.
A. G. Clark.



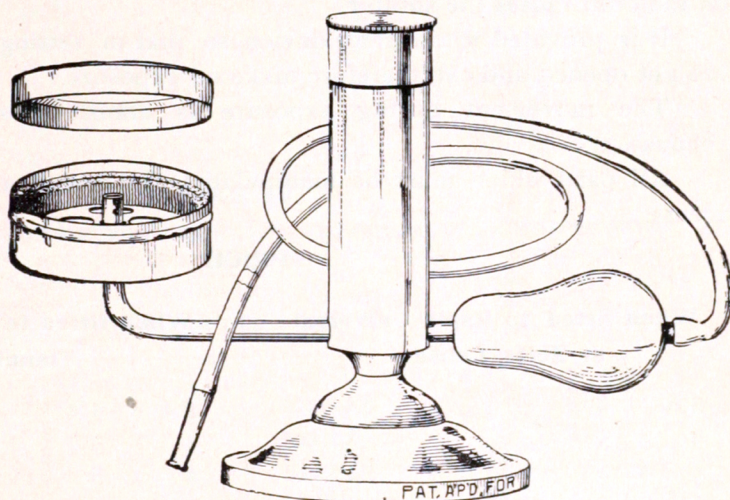
Hemperley's Flash Lamp.

This Lamp is the invention of one of the most successful workers in Flash Light Photography, and is well and favorably known. By simply turning the milled head at the end of barrel the lamp is instantly loaded and ready for use. The magazine will hold an ounce of powder, sufficient for a number of exposures.

Price, - - - - - \$2.75.

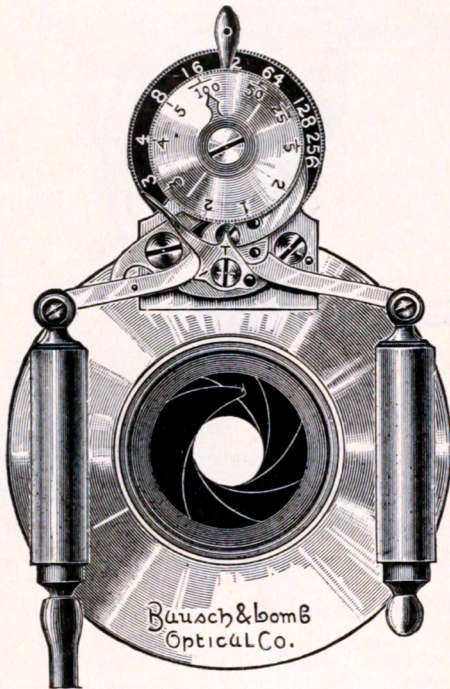
Perfection Flash Lamp

Of the many lamps which have been devised for burning pure magnesium, none combine the many excellent qualities of the "Perfection" as we believe it combines all the essential elements of a perfect flash lamp.



Price, complete, with Mouth-Piece, - - - \$2.00
 Price of Valve Bulb, extra, - - - .30

DIAPHRAGM SHUTTER.



The DIAPHRAGM SHUTTER will be found to meet every requirement of the amateur or professional photographer desiring a strictly first-class shutter for in-door or out-door work.

It is constructed in the best possible manner, operates without concussion, even when set at the highest speed, and is almost noiseless in action.

No loose diaphragms for the lens are necessary with this shutter, as the leaves serve the purpose of stops. The variation in size of the opening is made by turning the black discs with index, shown in the illustration.

The pointer on the small index indicates the speed. The shutter will work automatically from three seconds to the one-hundredth part of a second, and by simply moving a small lever, it may be

set for time exposure of any desired duration. In the latter case a pressure on the bulb closes the shutter.

It is provided with safety device, so that in setting shutter the blades are not opened and can therefore make no exposure.

The movement during exposure is almost absolutely free from concussion.

All parts which must be manipulated are placed at the front, easy of access.

PRICE.

When fitted to Rapid Universal or Zeiss Lenses.

3 ¹ / ₄ x 4 ¹ / ₄	\$12.50
4 x 5	12.50
5 x 8	13.50
6 ¹ / ₂ x 8 ¹ / ₂	14.50
8 x 10	16.00

When fitted to Lenses of Other Manufacture.

3 ¹ / ₄ x 4 ¹ / ₄	\$14.50
4 x 5	14.50
5 x 8	15.50
6 ¹ / ₂ x 8 ¹ / ₂	16.50
8 x 10	18.00

THE ZEISS-ANASTIGMAT LENSES.

SERIES III.

FOR INSTANTANEOUS WORK, STUDIO WORK ON GROUPS AND LARGE HEADS,
OUT-DOOR WORK OF ALL KINDS AND COPYING.

They are fitted with Iris Diaphragm.

Waterhouse stops in place of Iris at same price.

No.	Size of Plate covered with Stop f. 12 5	Diagonal of Largest Plate Covered with Small Stop 80°.	Free Diameter of Largest Lens.	Equivalent Focus.	Brass Aluminum Mounting.	
					Price.	Price.
1	3½ x 4½ in.	6½ in.	5 in.	3½ in.	\$ 25.00	\$ 28.00
2	4 x 5 "	7 in.	5½ "	4 ¾ "	28.00	31.00
3	4½ x 6½ "	9½ "	1 "	5½ "	31.00	35.00
4	5 x 7 "	13 "	1 ½ "	7½ "	42.00	46.00
5	5 x 8 "	14½ "	1 7/16 "	8½ "	52.00	56.00
6	6½ x 8½ "	16 9/16 "	1 ¾ "	9½ "	63.00	68.00
7	8 x 10 "	20 ¼ "	2 "	12 5/8 "	84.00	89.00
8	10 x 12 "	29 1/8 "	2 1/2 "	17 3/8 "	133.00	140.00
9	12 x 15 "	38 9/16 "	3 1/8 "	23 1/8 "	189.00	197.00

For pairing two lenses for stereoscopic work, extra, \$3.00.

SERIES IIIa.

INSTANTANEOUS OUTDOOR LENS, ALSO FOR GROUPS AND LARGE PORTRAITS.

The Lenses of this series have an angular aperture of 90°. The largest stop is f. 9.

No.	Size of Plate covered with Stop f. 12 5.	Diagonal of Largest Plate Covered with Small Stop 90°.	Free Diameter of Largest Lens.	Equivalent Focus.	Brass Aluminum Mounting.	
					Price.	Price.
1	4 x 5 in.	9 7/8 in.	5 in.	4 ¾ in.	\$ 23.00	\$ —
2	4½ x 6½ "	11 1/8 "	5½ "	5 7/8 "	26.00	—
3	5 x 7 "	13 9/16 "	6 "	6 ¾ "	32.00	35.00
4	5 x 8 "	15 7/8 "	1 "	7 1/8 "	35.00	38.00
5	6½ x 8½ "	18 1/8 "	1 ¼ "	9 1/8 "	45.00	49.00
6	7 x 9 "	21 7/8 "	1 7/16 "	10 ¾ "	56.00	60.00
7	8 x 10 "	25 "	1 5/8 "	12 ½ "	70.00	75.00
8	10 x 12 "	32 "	2 "	16 "	105.00	110.00
9	11 x 14 "	39 3/4 "	2 7/16 "	19 1/8 "	140.00	147.00

SERIES IV.

INSTANTANEOUS WIDE ANGLE FOR LANDSCAPE, INTERIORS AND ARCHITECTURE.

No.	Size of Plate covered with Stop f. 18.	Diagonal of Largest Plate Covered with Small Stop 96°.	Free Diameter of Largest Lens.	Equivalent Focus.	Brass Aluminum Mounting.	
					Price.	Price.
1	3¼ x 4¼ in.	5 ¼ in.	1 in.	2 7/8 in.	\$ 17.50	\$ —
2	4 x 5 "	8 1/8 "	1 3/8 "	3 7/8 "	17.50	—
3	4½ x 6½ "	10 5/8 "	1 ½ "	4 1/8 "	21.00	—
4	5 x 8 "	13 5/8 "	1 7/8 "	6 1/8 "	24.00	—
5	8 x 10 "	17 5/8 "	1 3/4 "	7 1/8 "	32.00	35.00
6	10 x 12 "	22 1/8 "	1 "	10 1/4 "	47.00	51.00

For pairing two lenses for stereoscopic work, extra, \$3.00.

ZEISS-ANASTIGMATIC LENSES.

SERIES V.

ANGLE, 108 DEGREES.

WIDE ANGLE LENS PAR EXCELLENCE, FOR INTERIORS, ARCHITECTURE, COPYING AND LANDSCAPES.

No.	Size of Plate covered with Stop <i>f.</i> 36.	Diag. of Largest Plate Covered with Small Stop 104° 110°.	Free Diameter of Largest Lens.	Equivalent Focus.	Price.
1	4½ x 6½ in.	8½ in.	9 in.	3 in.	\$22.00
2	5 x 7 "	11 "	11 "	4 in.	22.00
3	6½ x 8½ "	14 in.	12 "	5 in.	28.00
4	8 x 10 "	15 in.	13 in.	7 in.	35.00
5	10 x 12 "	21 in.	16 in.	8 in.	45.00
6	11 x 14 "	26 in.	18 in.	10 in.	56.00

GUNDLACH RAPID RECTIGRAPHIC.

PATENTED DEC. 9, 1890

No.	Size of Plate.	Diameter of Lenses.	Equivalent Focus.	Focus of Back Lens.	Focus of Front Lens.	Price.
0	3½ x 4½	1 in.	5 in.	8 in.	11 in.	\$ 14.00
1	4 x 5	1 in.	6 in.	10 in.	13 in.	20.00
1½	4½ x 6½	1 in.	7 in.	11 in.	14 in.	25.00
1¾	5 x 7	1 in.	8 in.	12 in.	17 in.	28.00
2	5 x 8	1 in.	8½ in.	13 in.	18 in.	30.00
3	6½ x 8½	1 in.	11 in.	17 in.	23 in.	38.00
4	8 x 10	1 in.	13 in.	20 in.	28 in.	50.00
5	10 x 12	2 in.	16 in.	25 in.	34 in.	64.00
6	11 x 14	2 in.	18 in.	29 in.	39 in.	76.00
7	14 x 17	2 in.	22 in.	34 in.	47 in.	100.00
8	17 x 20	3 in.	26 in.	41 in.	56 in.	125.00

Bausch & Lomb Optical Co.'s "Universal."

NO.	LENGTH FOCUS.	SIZE VIEW.	PRICE.
1	5¾ inches,	4 x 5	\$22.00
2	7¾ "	5 x 8	26.00
3	10¾ "	6½ x 8½	35.00
4	12¼ "	8 x 10	48.00
5	15 "	10 x 12	60.00

Darlot Rapid Hemispherical Lens.

NO.	LENGTH FOCUS.	SIZE VIEW.	PRICE.
1	5½ inches,	4 x 5	\$13.50
2	9 "	5 x 8	20.00
3	10½ "	8 x 10	30.00
4	14 "	11 x 14	45.00



ROCHESTER CAMERA MANUFACTURING CO.



Beck's "Autograph" Rapid Rectilinear Lens.

NO.	LENGTH FOCUS.	SIZE VIEW.	PRICE.
2	7 inches,	4 x 5	\$30.00
3	9 "	5 x 8	35.00
4	11 "	6½ x 8½	50.00
5	13 "	8 x 10	60.00
6	16 "	10 x 12	75.00

Beck's "Autograph" Rapid Rectilinear Lens.

SERIES "B."

NO.	LENGTH FOCUS.	SIZE VIEW	PRICE.
1	6 inches,	3¼ x 4¼	\$18.00
2	7 "	4 x 5	18.75
3	8¾ "	5 x 8	22.50
4	11 "	6½ x 8½	34.00
5	13 "	8 x 10	44.00

Ross' Rapid Symmetrical Lens.

NO.	LENGTH FOCUS.	SIZE VIEW.	PRICE.
1	6 inches,	4 x 5	\$34.00
2	9 "	5 x 8	46.00
3	11 "	6½ x 8½	52.00
4	14 "	8 x 10	68.00
5	16 "	10 x 12	84.00

Ross' Portable Symmetrical Lens.

NO.	LENGTH FOCUS.	SIZE VIEW.	PRICE.
3	5 inches,	4 x 5	\$28.00
4	6 "	5 x 8	32.00
6	8 "	6½ x 8½	48.00
8	10 "	8 x 10	64.00

Alvin G. Clark Lenses.

NO.	LENGTH FOCUS.	SIZE VIEW.	PRICE.
1	5¾ inches,	4 x 5	\$24.00
2	7¾ "	4 x 8	30.00
3	10⅝ "	6½ x 8½	38.00
4	12¼ "	8 x 10	50.00
5	15 "	10 x 12	64.00

WIDE ANGLE LENSES.

R. C. M. Co. Wide Angle Symmetrical Lens

Will be found as valuable for the character of work for which they are designed as our well known and popular Symmetrical Series. They are adapted for interiors, buildings, landscapes, and all work in confined situations, where lenses of longer focus cannot well be used.

NO.	LENGTH FOCUS.	SIZE VIEW.	PRICE.
1	3½ inches,	4 x 5	\$10.00
2	5 "	5 x 8	12.00
3	6½ "	6½ x 8½	15.00
4	8 "	8 x 10	20.00

Darlot's Wide Angle Hemispherical.

NO.	LENGTH FOCUS.	SIZE VIEW.	PRICE.
2	3 inches,	4 x 5	\$15.00
2½	4 "	5 x 7	15.00
3	5 "	6½ x 8½	20.00
4	8 "	8 x 10	25.00

Beck's "Autograph" Wide Angle.

NO.	LENGTH FOCUS.	SIZE VIEW.	PRICE.
1	3 inches,	4 x 5	\$25.00
2	4 "	5 x 8	30.00
3	5 "	6½ x 8½	37.50
4	7 "	8 x 10	50.00

Euryscope Wide Angle.

NO.	LENGTH FOCUS.	SIZE VIEW.	PRICE
1	4 inches,	4 x 5	\$27.00
2	5 "	5 x 8	29.00
3	6 "	6½ x 8½	34.00
4	7 "	8 x 10	39.00

