

1900



Poco

CATALOGUE AND PRICELIST
ROCHESTER CAMERA
& SUPPLY COMPANY

— — — — — BRANCH OF — — — — —

ROCHESTER OPTICAL & CAMERA COMPANY

MARCH



I 9 0 0

HOME OF THE POCO, 12-14 CALE-
DONIA AVENUE, 2-14 POCO STREET
ROCHESTER, N. Y., U.S.A.





TERMS

Prices listed in this catalogue are net. All goods are boxed and delivered to express or freight company at Rochester, free.

We guarantee safe arrival of goods at destination when shipped by express or freight. When shipped by mail they are at risk of purchaser.

In ordering goods always give shipping directions—whether by freight, express, or otherwise. If not so stated, we will use our discretion.

All orders for goods by express C.O.D. must in EVERY INSTANCE be accompanied by double the amount of transportation charges.

All orders for shipment by freight or mail must be accompanied by FULL AMOUNT OF PURCHASE. If by mail, INCLUDE POSTAGE, or they will be sent by express.

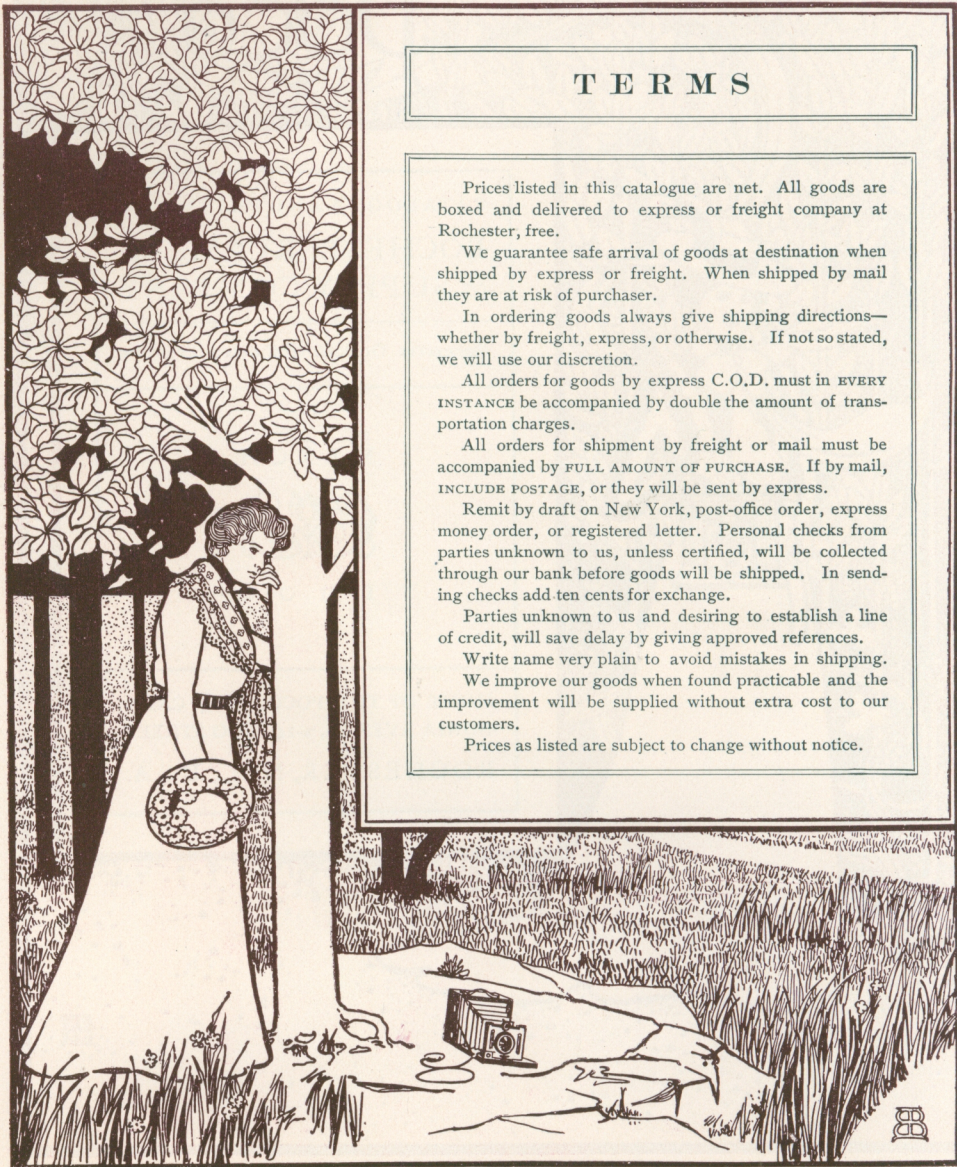
Remit by draft on New York, post-office order, express money order, or registered letter. Personal checks from parties unknown to us, unless certified, will be collected through our bank before goods will be shipped. In sending checks add ten cents for exchange.

Parties unknown to us and desiring to establish a line of credit, will save delay by giving approved references.

Write name very plain to avoid mistakes in shipping.

We improve our goods when found practicable and the improvement will be supplied without extra cost to our customers.

Prices as listed are subject to change without notice.



BRANCH OF ROCHESTER OPTICAL & CAMERA CO.

GREETING

We take pleasure in again presenting the Poco catalogue for the consideration of our many friends, this being the ninth edition, representing a corresponding number of years in the manufacture of these celebrated instruments. Although being connected with the new company, embracing, as it does, the most popular instruments made, we thought it advisable to issue an independent catalogue of this series.

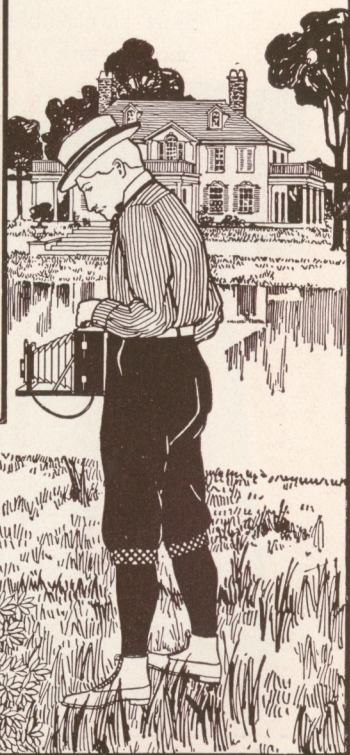
Those of our friends who have heretofore possessed former catalogues will notice by a careful perusal of this edition that we have again made huge strides in camera perfection, adding new designs and perfecting those made in former years, until at this time the Poco line is complete as well as peerless as regards other makes.

We wish to say one word regarding the popularity of the Poco, which is, that last season the output and sales of these instruments were double those of the year previous, and, with our increased facilities and our very complete line for this season, we again expect to cater to the desires of double our former number of patrons, assuring them that it will be our aim to meet the exacting requirements as to quality of goods and promptness in making shipments.

Thanking our former friends for their kind patronage, and hoping to make new ones for the coming year, we remain,

Yours very respectfully,

Rochester Camera & Supply Co.





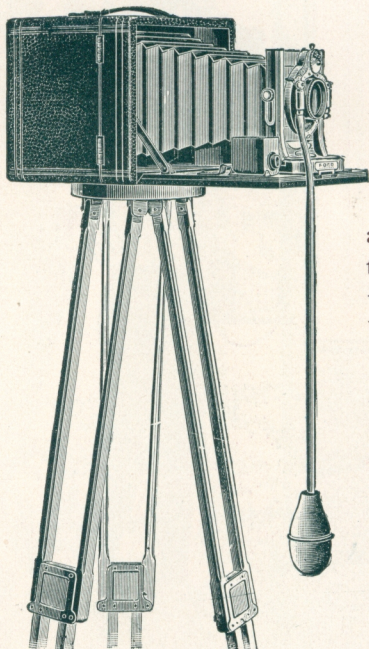
THE following pages are devoted to our famous line of Poco Folding Cameras. It is the most complete line of Folding or Hand cameras ever devised, and constitutes the acme of success in camera building. They combine all the features of complete view cameras with more compactness, being entirely self-contained when closed, no metal parts showing. They present a neat and handsome appearance, besides being one of the most serviceable and convenient instruments known in the art of photography. They are made in the best possible manner of selected

mahogany, highly polished, and covered with fine Morocco grain leather, fitted with leather handles for carrying purposes. All brass work and trimmings are highly polished and lacquered, making a beautiful contrast with the rich mahogany finish.

All swings on the Poco Folding series are at centers, which is optically correct, as they do not change the focus in the least when using them, the lens and center of plate being at all times in direct focus with each other.

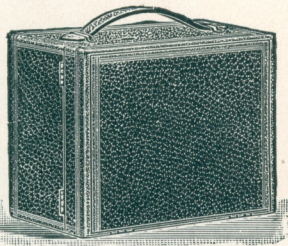
Each camera is focused before leaving our factory, a focusing scale being attached to fit each individual lens which accompanies it.

For this season we are fitting the Poco series with Bausch & Lomb diaphragm, Unicum, Poco and Cyko shutters, as represented on the following pages. A description of shutters will be found on pages 62 to 65 inclusive. All lenses used, unless otherwise specified,

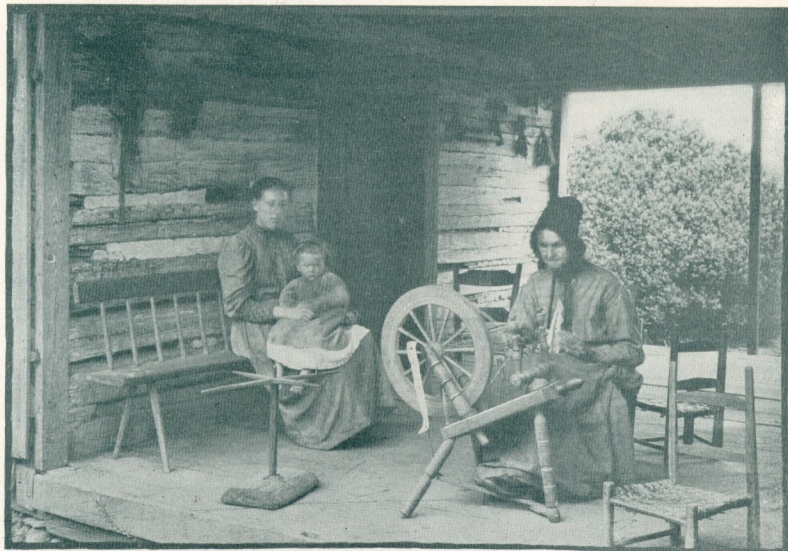


BRANCH OF ROCHESTER OPTICAL & CAMERA CO.

are the Rochester symmetrical, which are lenses of acknowledged merit, free from distortion, and perfectly rectilinear, capable of doing all classes of work with the finest results. The Poco view-finder is a special feature of all our Folding cameras, it being the only combined view-finder and level made. When looking at the finder it is impossible to avoid seeing the level as it works, on top of the glass on which the view appears, insuring perfect instead of distorted pictures. It can be reversed when the camera is placed, for vertical pictures. Specifications of their adjustments, together with sizes and prices, will be found on the following pages. A careful perusal will, we believe, convince the most skeptical that they are fully up to date in every respect, and the most complete camera on the market.



The roll-holder for 4 x 5 and 5 x 7 sizes takes the cartridge system of film.





POCO FOLDING-SERIES A

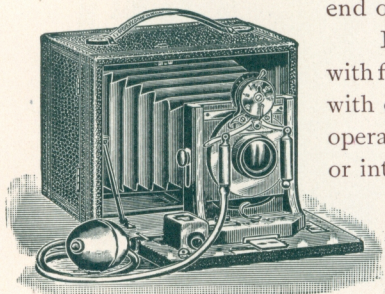


WE take just pride in representing here-with our Series A Poco Folding Camera, which we claim is without a peer in its class. The accompanying illustrations show the camera open and closed, fitted with the Bausch & Lomb Iris diaphragm and our Unicum shutter. The camera

is made in the best possible manner, under our personal supervision, of the finest selected mahogany, all metal parts of brass, both being highly polished, the deep contrast between the two in combination is very pleasing. The outside is covered with best Morocco grain leather, selected not only for its beautiful grain, but also for its wearing properties, fitted with leather handle, and is self-contained, when closed no metal parts showing.

The double swing back with which it is equipped is so placed that both swings are at centers, it being held firmly in position at any angle. It has our spring-actuated ground-glass screen, receding when the plate-holder is inserted, returning to its original position when withdrawn, and can be entirely removed when using the roll film-holder. Plate or roll-holders are inserted in a door at the side, or end of the camera, leaving the box intact.

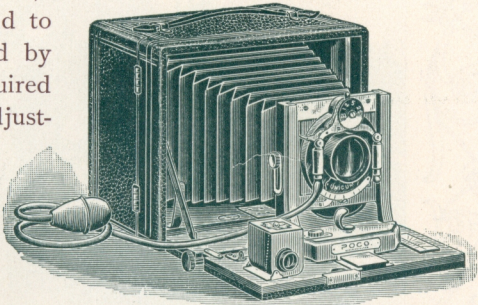
It is fitted with rising and double sliding front, with fine rack-and-pinion focusing movement, together with combined view-finder and level, enabling the operator to obtain the finest view without distortion or intricate manipulation. Two tripod plates are so placed that pictures can be taken either horizontally or vertically when using tripod. The bellows is cone-shaped and is made of selected red Russia leather, lined in such a manner that every vestige of light is excluded.



Poco, with B. & L. Shutter.

BRANCH OF ROCHESTER OPTICAL & CAMERA CO.

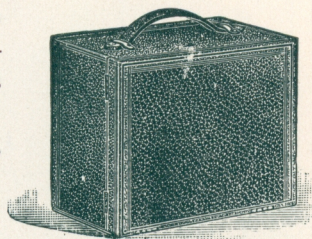
The regular equipment consists of the Unicum shutter with Iris diaphragms, finger and pneumatic release, rubber bulb and hose. It works automatically from one second to one one-hundredth part of a second by simply turning the dial at top to the required speed; it also has time and bulb adjustments. The diaphragm openings are regulated by a small lever at the bottom of the shutter. We fit the camera with the Bausch & Lomb diaphragm shutter, when so ordered, which works from three seconds to one one-hundredth part of a second, automatically; also has time and bulb adjustments. A complete description of these shutters may be found on pages 62 to 65, inclusive.



Poco with Unicum Shutter.

The lens is our high grade Rochester Symmetrical, adapted for all general purposes, perfectly rectilinear and free from distortion, showing a great depth of focus and cutting the plate clear and sharp to the extreme corners. This lens is interchangeable in the shutter with our wide angle lens when desired, which is of the same high standard as the regular Symmetrical and is particularly adapted for interiors or views in confined places.

The 4 x 5 size carries four plate-holders, other sizes three plate-holders.



	4 x 5	5 x 7	6½ x 8½	8 x 10	Specifications and Prices.
Complete with Unicum Shutter, Lens, and one Dry-plate Holder.	\$25.00	\$32.00	\$40.00	\$50.00	
Complete, B. & L. Diaphragm Shutter, Lens, and one Dry-plate Holder	35.00	42.00	55.00	65.00	
Extra for R. C. & S. Co.'s Wide Angle Lens.	8.00	10.00	15.00	18.00	
Camera, no Lens or Shutter	16.00	22.00	26.00	32.00	
Double Dry-plate Holders	1.00	1.25	1.75	2.00	
Cartridge System Roll-holder	5.00	6.50			
Sole Leather Case with Shoulder Strap.	2.50	3.00	3.50	4.00	

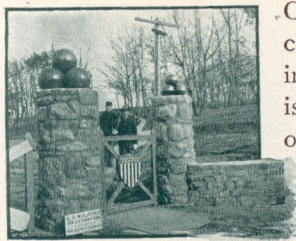


TAKEN WITH
4 X 5 POCO SERIES A.

BRANCH OF ROCHESTER OPTICAL & CAMERA CO.

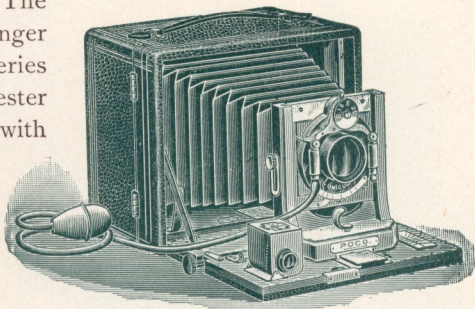


POCO FOLDING-SERIES B



ONE of the best known and most popular cameras of the entire series, and one meeting all requirements of the practical amateur, is our Poco Folding Series B. It is made of polished mahogany, trimmed with polished and lacquered brass throughout, covered with the finest Morocco grain leather; has leather handle, and is self-contained

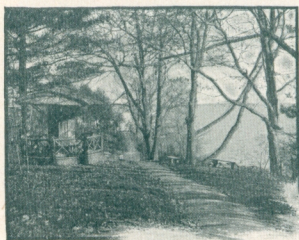
when closed, no metal parts showing. The single swing back, swinging perpendicularly, is operated from the center, in no way affecting the focus of the camera. It has rising front, rack-and-pinion focusing movement, spring-actuated ground-glass screen, large panel at the back to focus on the ground-glass when using tripod, and our combined Poco reversing view-finder and level. It is practically a counterpart of series A, excepting that it has but one swing, this style being by many preferred to the other. The Unicum shutter with Iris diaphragms, finger and pneumatic release, are fitted as in Series A. The lens is our high grade Rochester Symmetrical and is interchangeable with our wide-angle lens. The camera is made in two sizes only. The 4 x 5 size carries four plate-holders or roll-holder; the 5 x 7 size, three plate-holders or roll-holder.



	4 x 5	5 x 7	Specifications and Prices.
Camera complete, with Shutter, Lens, and one Dry-plate Holder	\$22.00	\$27.00	
R. C. & S. Co.'s Wide Angle Lens, extra	8.00	10.00	
Without Lens or Shutter	13.00	17.00	
Double Dry-plate Holders	1.00	1.25	
Cartridge System Roll-holder.	5.00	6.50	
Sole Leather Case with Shoulder Strap	2.50	3.00	



POCO FOLDING-SERIES C



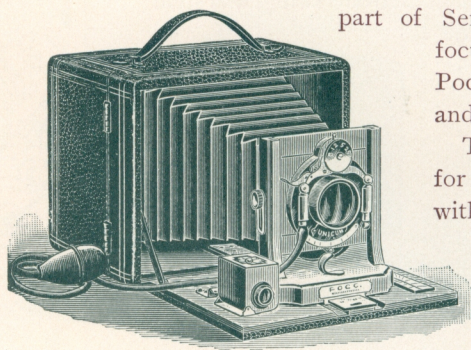
DURING the past season this camera met with universal success. We have made some changes in it for this season which are designed to make it more popular than ever. It is made of polished mahogany, trimmed with polished lacquered brass throughout, covered with the finest Morocco grain leather, has

leather handle, and is self-contained when closed, no metal parts showing. The single swing back, swinging perpendicularly, is operated from the center, in no way affecting the focus of the camera. It has rising front, spring-actuated ground-glass screen, large panel at the back to focus on the ground glass when using tripod, and Poco reversing view-finder and level combined. It is practically a counter-

part of Series B, excepting the rack-and-pinion focusing movement. It is fitted with the Poco shutter, with Iris diaphragms, finger and pneumatic release.

The lens is our Rapid Rectilinear adapted for all general work. It is interchangeable with our wide-angle lens.

This camera is made in two sizes only. The 4 x 5 size carries four plate-holders or roll-holder; the 5 x 7 size, three plate-holders or roll-holder.



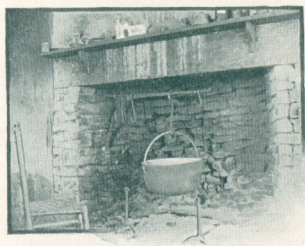
Specifications and Prices.

	4 x 5	5 x 7
Camera complete, with Shutter, Lens, and one Dry-plate Holder	\$15.00	\$20.00
Rack-and-Pinion, extra	3.00	3.00
R. C. & S. Co.'s Wide-angle Lens, extra	8.00	10.00
Without Lens or Shutter.	10.00	14.00
Double Dry-plate Holders	1.00	1.25
Cartridge System Roll-holder.	5.00	6.50
Sole Leather Case with Shoulder Strap	2.50	3.00

BRANCH OF ROCHESTER OPTICAL & CAMERA CO.



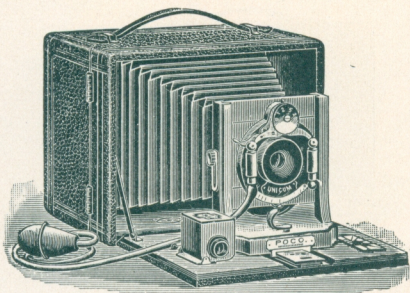
POCO FOLDING-SERIES D



THIS camera, designed and made in the same thorough and complete manner as the other series, and embracing their several meritorious features, is introduced more especially to meet the requirements of those desiring a compact folding camera at a moderate price. It is made of mahogany, finely polished, with all

metal parts of brass, polished and lacquered, showing the same beautiful contrast as the more expensive instruments. The outside is covered with selected Morocco grain leather, with leather handle.

The swing back is at center, which is optically correct, the proper focus being retained at all angles, as the center of plate is always in direct line with the lens. The spring-actuated ground-glass screen allows plate-holders to be inserted and withdrawn freely. It has rising front, cone-shaped leather bellows, and our patented view-finder and level combined, the level in plain view, enabling the operator to accurately locate his subject. It can be placed on the tripod either vertically or horizontally, being fitted with two tripod plates. It is equipped with the Poco shutter, with Iris diaphragms, hand and pneumatic release. The lens is our high grade Rochester Single Achromatic, giving good definition, and is the best lens of this character known.



	4 x 5	5 x 7	Specifications and Prices.
Camera complete, with Shutter, Single Achromatic Lens, and one			
Dry-plate Holder	\$12.00	\$16.00	
Double Dry-plate Holders	1.00	1.25	
Cartridge System Roll-holder	5.00	6.50	
Sole Leather Case, with Shoulder Strap	2.50	3.00	



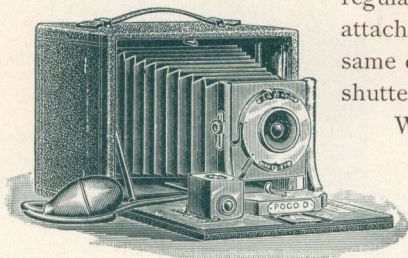
POCO FOLDING ~ SERIES E



IN introducing the Series E, we put a new camera in the field to meet requirements hitherto unprovided for, and one that is designed to be very popular on account of its practicability as a hand camera, the price being such that it is within the reach of all. Its construction is on the same general lines as the other series,

the wood parts being polished mahogany, all brass work being highly polished and lacquered; it is covered with selected Morocco grain leather, with leather handle; rising front, spring-actuated ground-glass screen, allowing the plate to be inserted, the ground-glass receding for this purpose and returning to position when plates are withdrawn. Our combined reversible view-finder and level is fitted as in the more expensive instruments.

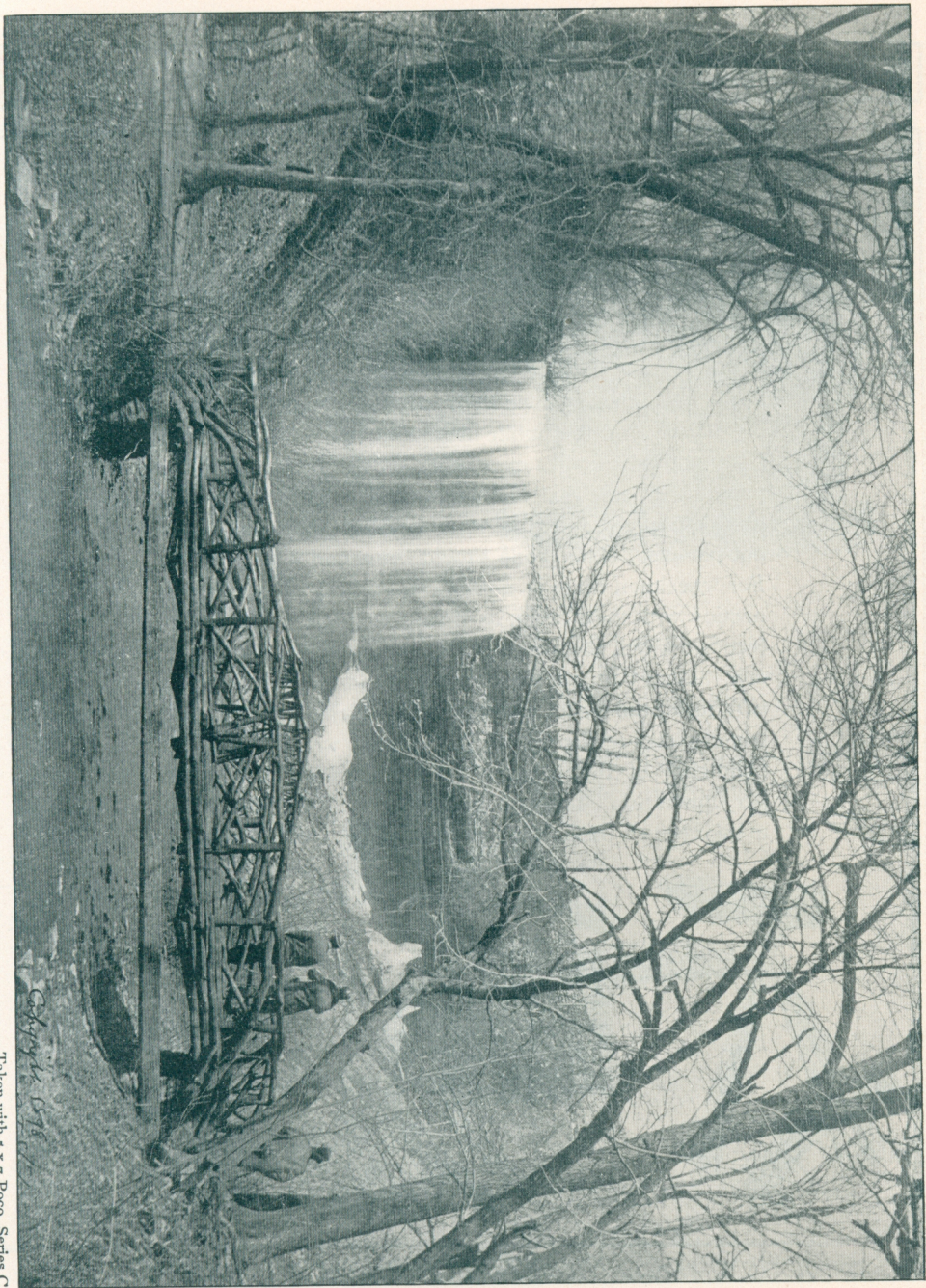
The shutter is the new Cyko, fitted with Iris diaphragms, speed regulator, pneumatic release with bulb and hose attachment, and can be manipulated with the same degree of satisfaction as the more expensive shutters.



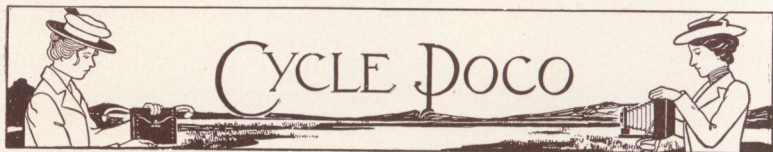
We fit the shutter with either the R. R. lens or our high grade single Achromatic, as is desired, the R. R. lens listing at \$2.00 more than the single Achromatic.

Specifications and Prices.

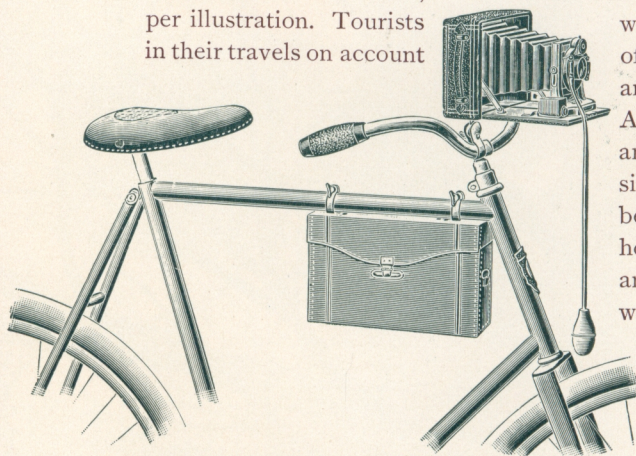
	4 x 5	5 x 7
Camera complete, with one Dry-plate Holder, and Single Achromatic Lens.	\$10.00	\$14.00
Camera complete, with one Dry-plate Holder and R. R. Lens. . .	12.00	16.00
Double Dry-plate Holders, extra	1.00	1.25
Cartridge System Roll-holder	5.00	6.50
Leather Carrying Case with Shoulder Strap	2.50	3.00



October 1898



CYCLE cameras were first introduced in the year 1895 by us exclusively, and were especially designed for wheelmen. Since their advent, tourists, huntsmen, canoeists, and the public in general have demonstrated their practicability and advantages over other styles. At present they are the most popular cameras that we manufacture. Other manufacturers seeing its worth have copied the style as closely as possible, trying to avoid our patents. This alone should commend it to the trade in general. For wheelmen there is nothing so pleasing as photography in connection with their tours, as it calls to mind the many beautiful scenes through which they have passed. The Cycle Poco is the wheelmen's companion, being made very light and compact and can easily be carried on the wheel without inconvenience. It is equipped with two tripod plates fitting our bicycle clamp, which can be placed on the handlebar of the wheel, per illustration. Tourists in their travels on account



the wheel serving as a tripod, as will find it very convenient of its compactness, stability, and picture taking qualities. All of the Cycle Poco series are made in the best possible manner, all wood parts being made of selected mahogany, elegantly polished and finished by competent workmen. All brass parts are highly polished and lacquered, making a beautiful contrast to each other. They are

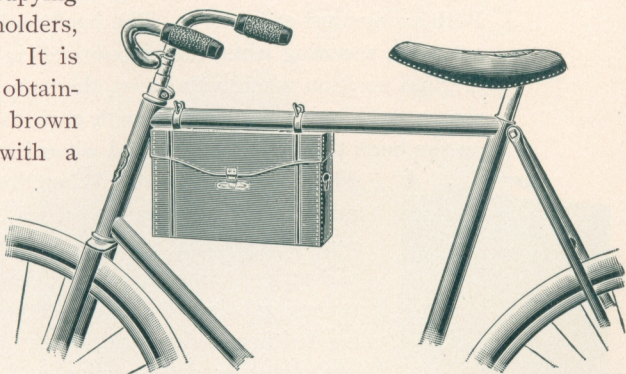
BRANCH OF ROCHESTER OPTICAL & CAMERA CO.

covered with fine Morocco grain leather, together with leather handle ; the bellows is of red Russia leather.

The back of the camera proper is spring actuated, receding to allow the plate-holder to be inserted, returning to its proper position when holder is withdrawn. The ground-glass screen for focusing is also contained in the camera back and acts with it. A panel is fitted which can be opened when focusing. The back is detachable when desired for the use of roll-holder. They can be used either horizontally or vertically, by hand or on the tripod.

The view-finder is our reversible view-finder and level combined, the only perfect one ever invented for camera use, working accurately and insuring the proper position of the camera, either with the tripod or when using by hand. As the leveling device is in plain view at all times, it is practically impossible to make a distorted picture.

They are fitted with B. & L. diaphragm, Unicum, Poco, and Cyko shutters. A sole leather carrying-case is furnished with each camera, the camera occupying one end and the plate-holders, or roll-holder the other. It is made of the best leather obtainable, of handsome olive brown color and is supplied with a strong catch, together with handle and rings for use with the shoulder strap. It can be attached to bicycle without injury to camera, case, or wheel, with no jar.





CYCLE POCO No. 1

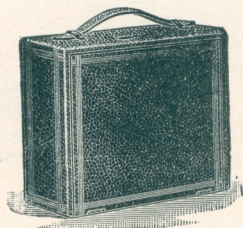


THE Cycle Poco No. 1 is designed to meet all requirements of the wheelman, tourist, and others wishing a thoroughly up-to-date camera. It has all the adjustments that the less compact cameras have and is manipulated in the same manner. All wood parts are made of the best seasoned

mahogany, highly polished, trimmed with polished and lacquered brass, showing the same beautiful contrast as the folding series. The covering is selected Morocco grain cow-hide leather, adopted for its wearing qualities, with leather handle, and is entirely self-contained when closed, no metal parts being visible.

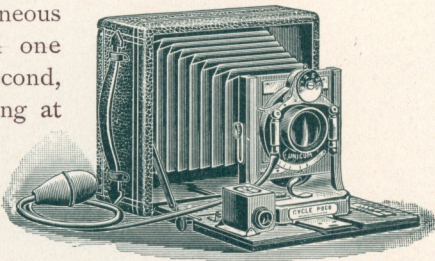
The double-swing back is fitted to this camera, adjusted at any angle by push-buttons, remaining perfectly stationary when placed. Both swings are at centers. The back and ground-glass are spring actuated, receding when the plate-holder is inserted, returning to its original position when withdrawn, the camera back and ground-glass screen working in conjunction with each other. A panel is so placed on the back that it can be opened when focusing on the ground-glass

when using a tripod. When the use of a roll-holder is desired instead of plate-holders, the entire back can be removed for the adjustment. It has rising and double sliding front, fine rack-and-pinion focusing movement, Poco reversing view-finder and level combined, and can be used either in the hand, on the bicycle or tripod. It has two plates fixed for vertical and horizontal pictures.



BRANCH OF ROCHESTER OPTICAL & CAMERA CO.

The regular equipment consists of Unicum shutter with Iris diaphragms, hand and pneumatic release, with bulb and hose attachment, adjusted for time, bulb and instantaneous exposures, working automatically from one second to one one-hundredth part of a second, or the B. & L. diaphragm shutter, working at from one one-hundredth part of a second to three seconds. The regular lens is our celebrated Rochester Symmetrical, which is perfectly rectilinear and free from distortion.

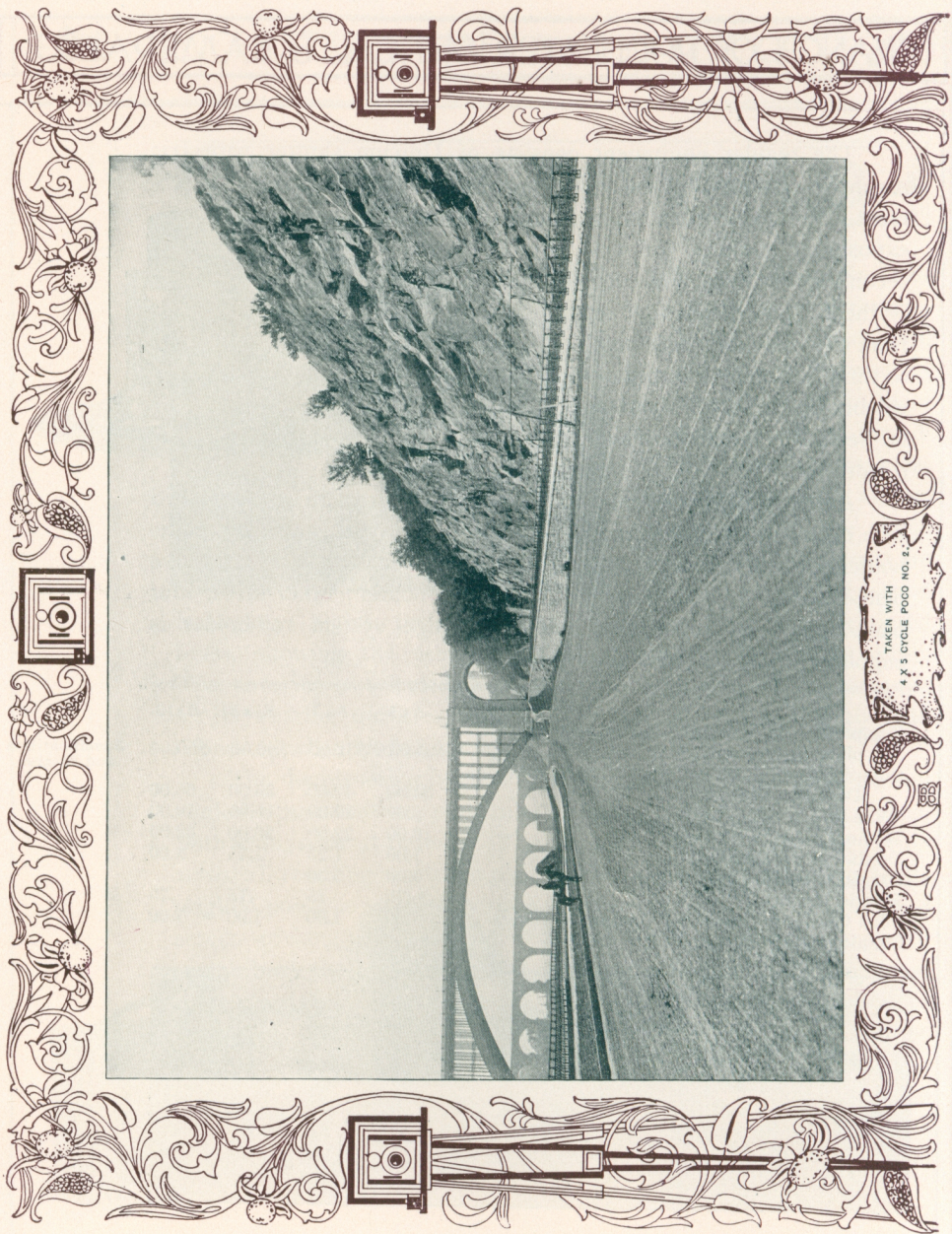


A sole leather carrying-case of improved design is furnished with each camera, the camera occupying one end, and the plate-holders or roll-holder the other. The 4 x 5 size case will carry five plate-holders, or roll-holder and one plate-holder; other sizes, four plate-holders or roll-holder. The cartridge system roll-holder is supplied in the 4 x 5 and 5 x 7 sizes.

	4 x 5	5 x 7	6½ x 8½	8 x 10
Complete, with Unicum Shutter and one Dry-plate Holder	\$25.00	\$32.00	\$40.00	\$50.00
Complete, with Diaphragm, Shutter, and one Dry-plate Holder	35.00	42.00	55.00	65.00
Wide Angle Lens, extra	8.00	10.00	15.00	18.00
Without Lens or Shutter	16.00	22.00	26.00	32.00
Double Dry-plate Holders.	1.00	1.25	1.75	2.00
Cartridge System Roll-holder	5.00	6.50		
Bicycle Clamp.75	.75	.75	.75
Poco Carrier for attaching Camera to Bicycle	1.00	1.00	1.00	1.00
Shoulder Strap, 25 cents extra.				

Specifications
and Prices.





TAKEN WITH
#5 CYCLE POCO NO. 2.



CYCLE Poco No. 2

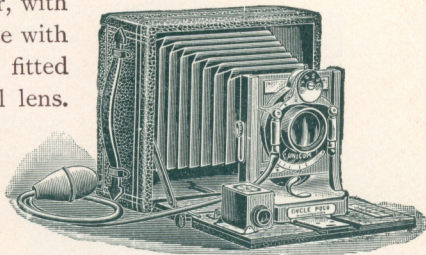


CYCLE Poco No. 2 is one of the most popular cameras of our entire output, having all the features of a first-class instrument that are absolutely essential. It is made in the best possible manner, very strong and rigid, light, compact, serviceable, and neat in appearance, of polished mahogany, trimmed with

polished and lacquered brass, covered with best selected Morocco grain leather, with leather handle. It has our spring-actuated ground-glass screen, rising front, and two tripod plates, so that views can be taken either vertically or horizontally while using a tripod, or the bicycle as such when so desired. It has rack-and-pinion focusing attachment, and the combined Poco reversing view-finder and level.

It is supplied with the Unicum shutter, with Iris diaphragms, hand and pneumatic release with bulb and hose attachment. The shutter is fitted with our high-grade Rochester Symmetrical lens.

A sole leather carrying-case accompanies the camera with capacity for the camera and five plate-holders in 4 x 5 size; for 5 x 7 size, four holders.



Camera complete, with Shutter, Lens, one Dry-plate Holder, and

	4 x 5	5 x 7
Carrying-case.	\$22.00	\$27.00
Wide Angle Lens, extra	8.00	10.00
Without Lens or Shutter	13.00	17.00
Double Dry-plate Holders	1.00	1.25
Cartridge System Roll-holder.	5.00	6.50
Bicycle Clamp75	.75
Poco Carrier for attaching Camera to Bicycle.	1.00	1.00
Shoulder Strap25	.25

Specifications
and Prices.



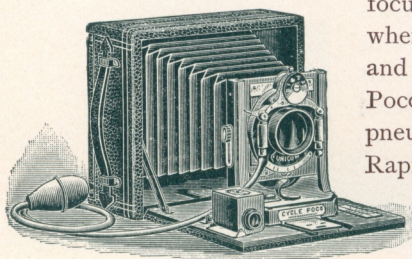
CYCLE POCO No. 3



CYCLE Poco No. 3 was pronounced the greatest success as a camera for last season ever sold. It was designed to meet the demand for a first-class instrument of the Cycle series, at a popular price. It has all the essential features of this variety of cameras, and is made in the best possible manner; very strong

and rigid, light, compact, serviceable, and neat in appearance, of polished mahogany, trimmed with polished and lacquered brass, covered with best Morocco grain leather, with leather handle. It has spring-actuated ground-glass screen, rising front and two tripod plates, so that views can be taken either vertically or horizontally while using the tripod, or the bicycle as such when desired. The rack-and-pinion

focusing attachment can be adjusted to the camera when ordered. It has combined Poco view-finder and level. It is supplied this season with the Poco shutter, with Iris diaphragms, and hand and pneumatic release. The shutter is fitted with our Rapid Rectilinear lens. A sole leather carrying case is furnished with capacity for the camera and five plate-holders in 4 x 5 size; for 5 x 7 size, four holders.



Specifications and Prices.


	4 x 5	5 x 7
Camera complete, with Shutter, Lens, one Dry-plate Holder, and Carrying-case.	\$15.00	\$20.00
Rack-and-Pinion, extra.	3.00	3.00
Wide Angle Lens, extra.	8.00	10.00
Without Lens or Shutter.	10.00	14.00
Double Dry-plate Holders.	1.00	1.25
Cartridge System Roll-holder.	5.00	6.50
Bicycle Clamp.75	.75
Poco Carrier, for attaching Camera to Bicycle.	1.00	1.00
Shoulder Strap.25	.25

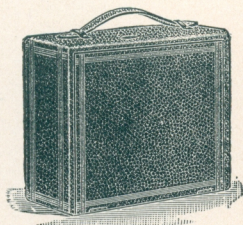
BRANCH OF ROCHESTER OPTICAL & CAMERA CO.



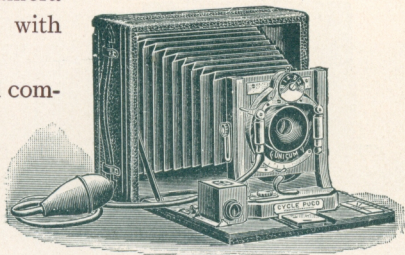
CYCLE POCO No. 4




HERE is always a call and demand for a first-class, high-grade camera, fitted with a single Achromatic lens, instead of the more expensive Symmetrical or R. R. lens. We have such a camera in the Cycle Poco No. 4. This camera is identical with the Cycle Poco No. 3, with the exception of the shutter, which is constructed for the Single Achromatic lens, and the lens itself. The shutter is the regular Poco fitted with Iris diaphragms, hand and pneumatic release, bulb and hose attachment, which is easy of manipulation and perfect in every detail. As noted above, the lens is our high-grade Single Achromatic, giving the best results for definition and depth of focus of any single lens made. The camera is made of polished mahogany, and trimmed with polished and lacquered brass, has rising front, spring-actuated ground-glass screen and back, two tripod plates, and selected red Russia leather bellows. The outside of camera is covered with fine Morocco grain leather, with leather handle.



Our Poco reversing view-finder and level combined is also one of the equipments. As the level is always in plain view, acting with the finder, it is a great aid in obtaining perfect pictures.

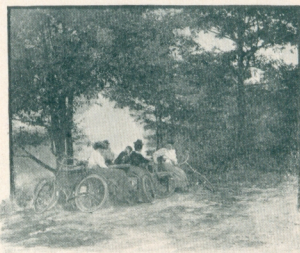


Camera complete, with Shutter, Lens, one Dry-plate Holder, and

	4 x 5	5 x 7	Specifications and Prices.
Sole Leather Case	\$12.00	\$16.00	
Double Dry-plate Holders, each	1.00	1.25	
Cartridge System Roll-holder	5.00	6.50	
Bicycle Clamp75	.75	
Poco Carrier for attaching Case to Bicycle	1.00	1.00	
Shoulder Strap25	.25	



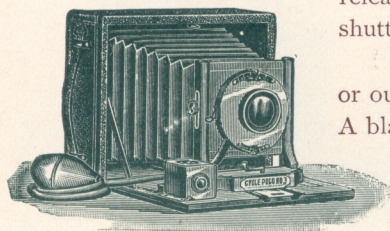
CYCLE POCO No. 5



A NEW camera finds its way to the front in the Cycle Poco No. 5. It is practically a counterpart of the Cycle Poco No. 3 and 4, with the exception that our new Cyko shutter is supplied, and will, without doubt, meet with general favor for the year 1900. It is made of mahogany, finely polished, with all metal

parts of brass, polished and lacquered, showing the same beautiful contrast as the more expensive instruments. The outside is covered with selected Morocco grain leather, with leather handle. It has spring-actuated ground-glass screen, rising front, red Morocco bellows, and our patented view-finder and level combined.

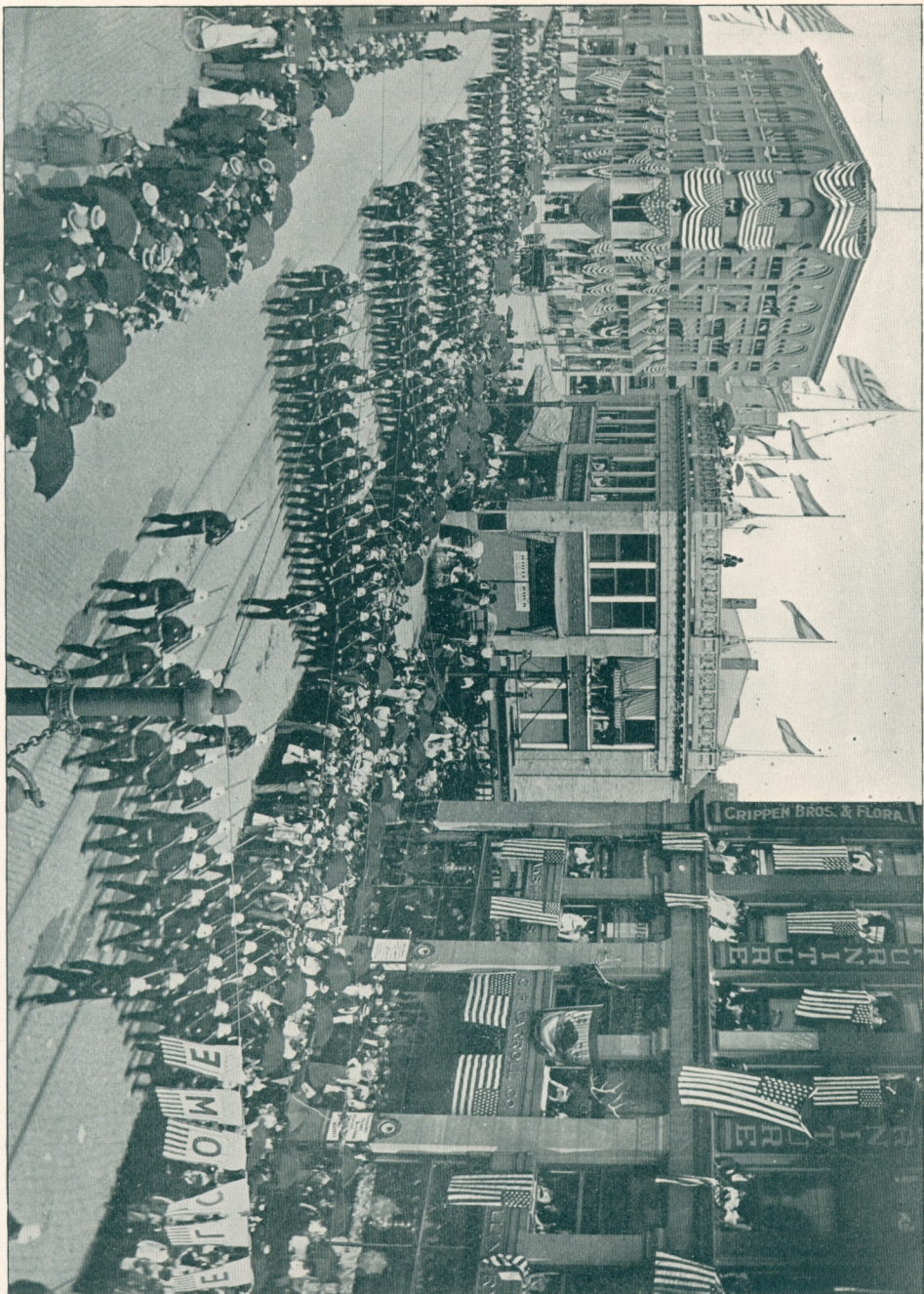
We fit our new Cyko shutter, equipped with all the modern devices, such as Iris diaphragm, speed regulator and pneumatic release. A full and complete description of this shutter will be found on page 65.



This camera is listed with either the R. R. lens or our Single Achromatic lens, as will be noticed. A black leather case is supplied with accommodation for the camera in one end, and five holders in 4 x 5 size and four in 5 x 7 size in the other.

Specifications and Prices.

	4 x 5	5 x 7
Camera complete, with one Dry-plate Holder, and Single Achromatic Lens.	\$10.00	\$14.00
Camera complete, with one Dry-plate Holder and R. R. Lens.	12.00	16.00
Double Dry-plate Holders	1.00	1.25
Cartridge System Roll-holder.	5.00	6.50
Bicycle Clamp75	.75
Poco Carrier, for attaching Case to Bicycle.	1.00	1.00
Shoulder Strap25	.25



Taken with 5 x 7 Cycle POCO No. 1.



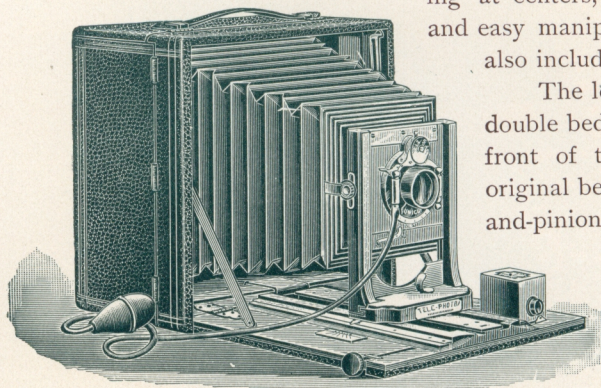
TELE-PHOTO POCO A

THIS camera, made exclusively by us, was designed and made to meet the demand for a complete instrument in every respect. The size is a trifle larger than our regular Poco Folding cameras, which is required in order to obtain the great length of draw and the reversible back with which it is fitted. It can be used as the regular folding series without the extension bed, or with the extension at its limit, when desired. Its mechanical and optical construction is perfect, meeting all requirements of any known camera. All parts constructed of wood are of the finest selected, seasoned mahogany, very highly polished; all metal parts and fittings of polished and lacquered brass; the body is covered with selected Morocco grain leather, with leather handle.

The reversing back is a special feature, enabling the operator to photograph objects either horizontally or vertically, without changing the camera or disturbing the focus. It is also fitted with spring-actuated ground-glass screen. It has double-swing back, both swinging at centers, arranged for convenience and easy manipulation. The adjustments also include the rising front.

The long draw is obtained by a double bed, the part adjusted to the front of the camera sliding on the original bed by the aid of a fine rack-and-pinion focusing attachment, permitting the use of very long focus lenses. It is also fitted with our combined view-finder and level.

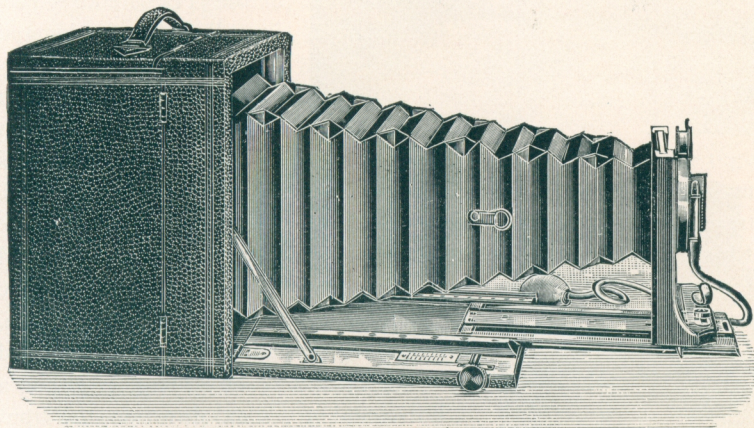
The U n i c u m shutter,



BRANCH OF ROCHESTER OPTICAL & CAMERA CO.

with Iris diaphragms, hand and pneumatic release, bulb and hose attachment, is the regular shutter supplied, although the Bausch & Lomb diaphragm shutter is substituted when so ordered. The shutter is fitted with our high-grade Rochester Symmetrical lens. The front lens may be removed and the rear combination alone used when taking views of objects at a distance, which nearly doubles the size of the image, requiring the long draw for which this camera was designed.

The camera may be used for copying, or for any other purpose requiring an extra long bellows and long draw.



	4 x 5	5 x 7	6½ x 8½	8 x 10	Measurements and Weights.
Size	5½ x 7 x 7½	5½ x 9½ x 9½	7 x 11 x 11½	7 x 12½ x 13½	
Focal length	13½ in.	18 in.	21 in.	24 in.	
Weight	3 lbs.	4 lbs.	5½ lbs.	7 lbs.	

	4 x 5	5 x 7	6½ x 8½	8 x 10	Specifications and Prices.
Complete, with Unicum Shutter, Lens, and one Double Plate-holder	\$30.00	\$35.00	\$45.00	\$55.00	
Complete, with B. & L. Diaphragm Shutter, Lens, and one Double Plate-holder.	40.00	45.00	55.00	65.00	
Without Lens or Shutter	20.00	24.00	30.00	36.00	
Double Dry-plate Holders	1.00	1.25	1.75	2.00	
Cartridge System Roll-holder	5.00	6.50			
Sole Leather Case with Shoulder Strap.	3.00	3.50	4.50	5.50	



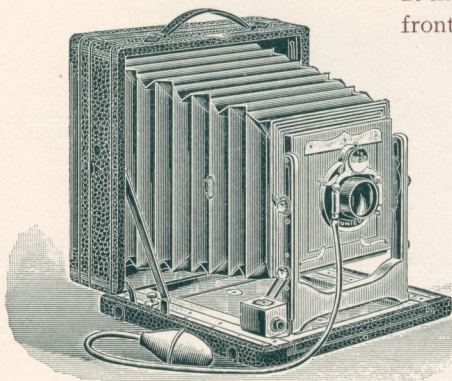
TELE-PHOTO CYCLE POCO B KING POCO



POSITIVELY the king of all hand cameras. No other camera on the market has the facilities or the class of workmanship embodied in the Tele Photo Cycle Poco B. It fills the demand of up-to-date ideas in photography and combines every adjustment that can be applied to a camera; is

small and compact considering its capacity and many advantages, strength and rigidity not being sacrificed. All wood parts are made of highly polished mahogany and all brass parts are polished and lacquered. The outside is covered with best selected black cowhide leather with Morocco grain, making it very handsome and serviceable.

It has swinging motion both to the back and front. The back may be swung in either a horizontal or vertical direction, the front in a vertical plane; the advantage being that when the camera is used for photographing objects either above or below its level, it may be tilted and the front and back swung parallel to each other and exactly vertical, giving advantage of a great rise and fall without distortion. The back of the camera is arranged to slide up close to the front for use with wide-angle lenses, therefore, there



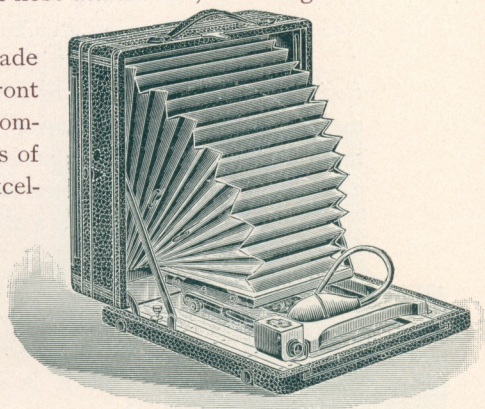
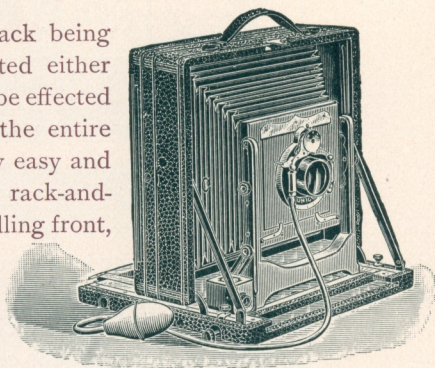
BRANCH OF ROCHESTER OPTICAL & CAMERA CO.

is no projecting bed to cut off the angle of view. A lens of two-inch focus can be used without the bed obstructing the view, still the extreme range of focus is available.

The camera box is square, the back being reversible, so that when the view is wanted either horizontally or vertically, the change can be effected by simply reversing the back instead of the entire camera. It has no loose parts and is very easy and simple of manipulation. It has two fine rack-and-pinion focusing attachments, rising and falling front, spring-actuated ground-glass screen, Poco view-finder and level, leather handle, and two tripod plates for balancing it on the tripod for any adjustment. The Unicum shutter, with Iris diaphragm, hand and pneumatic release bulb and hose attachment, is the regular shutter supplied.

It is fitted with our high-grade Rochester Symmetrical lens. The front lens may be removed and the rear combination used alone when taking views of objects at a distance. This is an excellent feature, by means of which, and the long draw, the size of the image is nearly doubled.

It is furnished with sole-leather carrying-case, holding camera in one end and plate holders in the other.



Complete, with Unicum Shutter, Lens, and one
Dry-plate Holder
Wide Angle Lens, extra
Without Lens or Shutter
Double Dry-plate Holders

4 x 5	5 x 7	6½ x 8½	8 x 10
\$40.00	\$50.00	\$60.00	\$70.00
8.00	10.00	15.00	18.00
30.00	39.00	45.00	51.00
1.00	1.25	1.75	2.00

Specifications
and Prices.

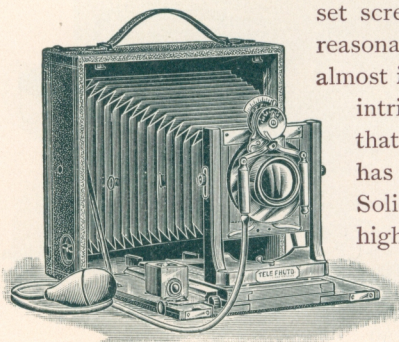


TELE-PHOTO CYCLE POCO C TRIPLE EXTENSION

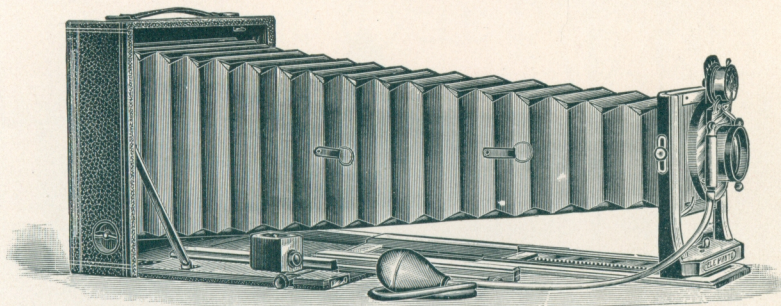
THIS camera is especially designed and made for the use of lenses with more than one focus, and with the extreme length of draw all regular lenses now on the market can be used with double and triple focus. For illustration, our 5 x 7 Rochester Symmetrical lens has a combined focus of nine inches, a rear lens focus of thirteen inches, and front lens focus of nineteen inches, and as the bellows extension or draw obtained is twenty-one and one-half inches in the 5 x 7 size, this lens or one with considerable longer focus could be used. For the accommodation of this long draw the bed is made in three sections, each section sliding upon the other, the sliding sections being each supplied with a fine rack-and-pinion focusing attachment for their operation.

This camera is made with the reversible back. When views are desired either horizontally or vertically the change can be effected in an instant by simply reversing the back, enabling the operator to make the change from one position to another without reversing the entire camera or changing the focus in the least.

The new swing back is a special feature, being operated by two set screws at the side, it can be adjusted at any reasonable angle and held securely in that position almost instantly. This swing is supplied with no intricate mechanism whatever, and is so simple that it is impossible to get out of order. It has our spring-actuated ground-glass screen. Solid mahogany, thoroughly seasoned and highly polished is used for all wood parts. All brass work is polished and lacquered with the utmost care. The box is covered with selected Morocco grain leather, and fitted



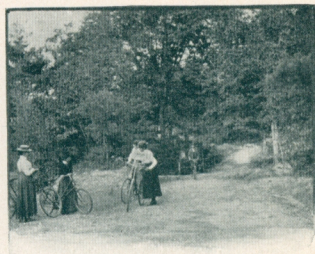
BRANCH OF ROCHESTER OPTICAL & CAMERA CO.



with leather handle. The bellows is made of red Russia leather, cone shaped and flexible. It has the rising and falling front, detachable lens board, and our patent view-finder and level combined.

The Unicum shutter, with iris diaphragms, hand and pneumatic release, with bulb and hose attachment, is the regular shutter supplied. It is fitted with our high-grade Rochester Symmetrical lens, adapted for all general purposes, perfectly rectilinear and free from distortion. This lens can be used with single combinations for near-by or long-distance work in the same manner as the more expensive lenses.

It is furnished with a sole-leather carrying-case, of olive brown, the camera being contained in one end, and plate holders in the other, in the 4 x 5 and 5 x 7 sizes; larger sizes are made square, the holders being carried beside the camera.



	4 x 5	5 x 7	6½ x 8½	8 x 10
Complete, with Unicum, Shutter, Lens, and one Double Plate Holder	\$35.00	\$40.00	\$50.00	\$60.00
Without Lens and Shutter	25.00	29.00	35.00	41.00
Double Dry-plate Holders.	1.00	1.25	1.75	2.00
Cartridge System Roll-holder	5.00	6.50		

Specifications
and Prices.



Taken with Tele-Photo Poco, fitted with Goerz double anastigmat lens; the top picture with regular double combination of lens; the lower one with the front lens removed, using the rear combination only with long draw, without changing position of camera.



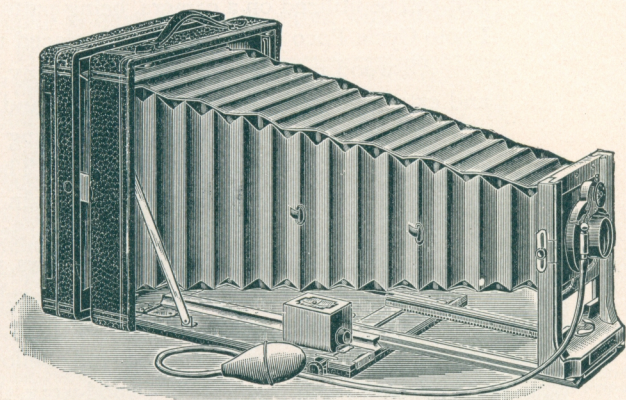
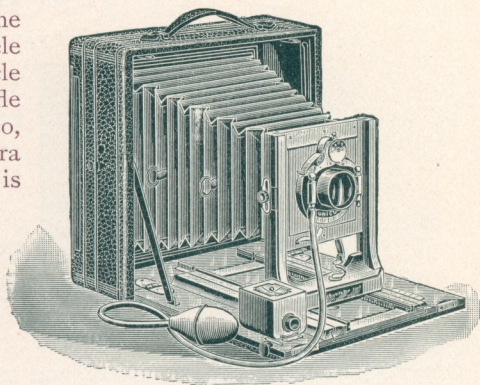


TELE-PHOTO CYCLE POCO D



HIS camera is made on the same general plan as the Tele Photo Poco A, with the Cycle Poco features. It is a trifle larger than the Cycle Poco,

owing to the reversible back and extra long draw, which is 16 inches, and is very desirable and advantageous in taking distant views; also allowing the use of long-focus lenses, or the rear combination alone of the regular lens. With the reversible back either horizontal or vertical views may be taken without altering position of the camera. The swing back is operated by three push buttons; by pressing the two buttons on the sides, the back of the camera proper will extend one-half inch, which leaves room for the swing to operate. The top button regulates the swings, which are at centers. The construction and material are identical with our other makes of high-grade cameras. It has rising front, fine rack-and-pinion focusing movement, our combined view-finder and level, Unicum shutter fitted with Symmetrical lens and sole-leather case.

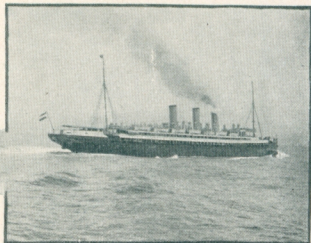


Camera complete, with Shutter, Lens, and one	4 x 5	5 x 7	6½x8½	8x10
Dry-plate Holder	\$30.00	\$35.00	\$45.00	\$55.00
Without Lens or Shutter	20.00	24.00	30.00	36.00
Double Dry-plate Holders.	1.00	1.25	1.75	2.00
Cartridge System Roll-holder	5.00	6.50		

Specifications
and Prices.



TELE-PHOTO CYCLE POCO B SPECIAL

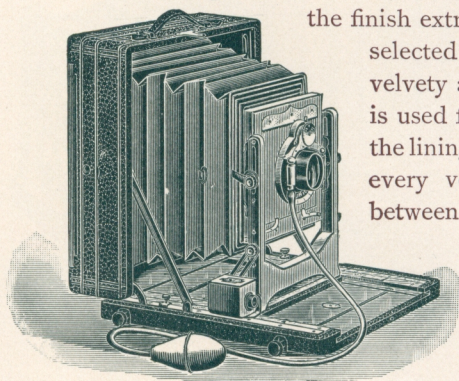


CAMERA perfection can be reached only after attaining a thorough knowledge of the optical and chemical qualities of lenses with relation to cameras, together with the requirements exacted by amateurs, and the adaptation of the instrument to the needs of both.

We have found that a much superior camera than has heretofore been manufactured was essential to make the Poco line complete, and have acted accordingly, introducing for this season the Tele Photo Cycle Poco B Special, absolutely the finest and most perfect camera ever constructed. It embodies every feature that can be utilized on a camera, being patterned closely after the Tele Photo Cycle Poco B, which was first placed upon the market last year.

All wood parts are of solid mahogany, selected for its solidity and extra fine grain, superbly finished and polished, and all metal work given extra attention as to polishing and lacquering, making the finish extra durable. The covering is of the finest

selected Morocco grain leather, giving it a soft, velvety appearance. Selected red Russia leather is used for the bellows, which is soft and flexible; the lining being black rubber cloth, which excludes every vestige of light, and the deep contrast between the red bellows, the highly polished wood-work, the shining brass, and the Morocco grain covering is very pleasing to the eye. Every detail as to the assembling or placing the different parts of the camera together has been



BRANCH OF ROCHESTER OPTICAL & CAMERA CO.

executed with exactitude and the most perfect precision of operation is the result. This instrument is furnished with the B. & L. diaphragm shutter and the Goerz Series III or Zeiss Series VIIa Anastigmat lens, both of which are made on the most scientific principles. The Zeiss lens can be used with both combinations in regular view work or with either the front or back combination singly on long distance objects, thereby combining three distinct lenses in one. The Goerz lens can be used with double combination or with back lens singly on long-distance views. The holders supplied are of seasoned and selected cherry, highly polished, five holders accompanying the outfit.



The carrying-case for the 4 x 5 and 5 x 7 sizes is the long pattern; larger sizes are made square. The case is made of cowhide, very substantial and of improved design. The color is olive brown, is fitted with two snap-catches, with lock and key, and lined with purple velvet. The manipulation of this instrument is identical with the renowned Tele Photo Cycle Poco B, every attachment being supplied and the several adjustments working in the same manner. The measurements and weights are the same, adapting it for either a hand or tripod instrument.



	4 x 5	5 x 7	6½ x 8½	8 x 10
Complete, with B. & L. Diaphragm Shutter and Goerz Series III Double Anastigmat Lens. . .	\$110.00*	135.00	155.00	195.00
Complete, with Diaphragm Shutter and B. & L. Zeiss Series VIIa Convertible Anastigmat Lens	125.00*	150.00	200.00	260.00
Wide-angle Lens, extra.	8.00	10.00	15.00	18.00
Polished Double Dry-plate Holders.	1.50	1.75	2.50	3.00
Cartridge System Roll-holder	5.00	6.50		

Specifications
and Prices.

*4 x 5 size fitted with Unicum Shutter.



DOUBLE COMBINATION.



BACK COMBINATION.



FRONT COMBINATION IN BACK.

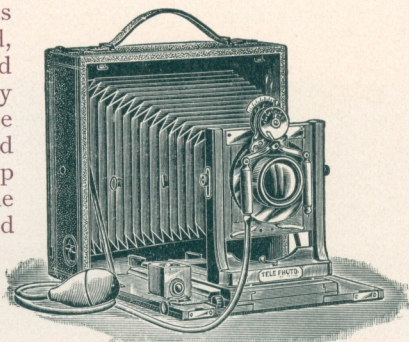
Made with Tele Photo Cycle Poco C; fitted with B. & L. Shutter and Zeiss Series VIIa Convertible Anastigmat Lens, showing the relative sizes of the same picture without changing the position or distance of the camera from the object.
(REDUCED)



TELE-PHOTO CYCLE POCO C SPECIAL



WITH the introduction of the Cycle Poco, triple extension, we also place upon the market the same instrument in the special series. It is identical with the regular instrument, except that the special series are equipped on a more elaborate plan, making it not only a model working camera, but one of elegance and perfection in detail. Particular attention has been paid to the assembling of the parts, every piece being thoroughly inspected. All wood parts are selected mahogany, with extra fine grain and very highly polished. All metal parts are polished and lacquered with extra care, making the finish extra durable. The best of Morocco grain cowhide leather is used for the covering, and finest grade of red Russia leather for the bellows. It is furnished with the B. & L. diaphragm shutter and is listed with both the Goerz Series III double anastigmat and the B. & L.-Zeiss Series VIIa Convertible lenses. The lenses with their several combinations can be used, as the camera has the extra long draw and triple extension. The holders are of highly polished seasoned cherry. The carrying-case is made of selected cowhide, of improved design; the color is olive brown. Two snap catches and lock and key are supplied. The lining is purple velvet, padded and embellished with satin ribbon, making it the finest outfit ever placed upon the market. (See illustration on page 33.) Its taste and elegance are of a superior order.



	4 x 5	5 x 7	6½ x 8½	8 x 10
Complete, with B. & L. Diaphragm Shutter and Goerz Series III Double Anastigmat Lens	\$105.00	\$125.00	\$145.00	\$185.00
Complete, with B. & L. Diaphragm Shutter and Zeiss Series VIIa Convertible Anastigmat Lens	120.00	140.00	190.00	250.00
Wide-angle Lens, extra	8.00	10.00	15.00	18.00
Polished Double Dry-plate Holders	1.50	1.75	2.50	3.00
Cartridge System Roll-holder	5.00	6.50		

Specifications
and Prices.



STEREO POCO

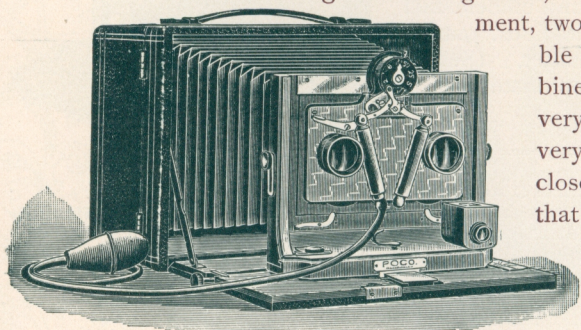


WITHIN the past few years amateurs, as well as professionals, have entered more generally into stereoscopic photography, a very fascinating branch of the art. The Stereo Poco was especially designed to meet their wants; it is practically the same as our regular Folding Series A, with the addition

of a wide front, size being the same. It is covered with Morocco grain leather and has leather handle. All wood parts are solid mahogany; metal parts of lacquered brass, all highly polished.

Double swing back, both swings at centers are fitted, together with spring-actuated ground-glass screen, receding for the insertion of holder and returning to its proper place when holder is withdrawn. It has the rising and sliding front, rack-and-pinion focusing movement, two tripod plates, and our reversible

view-finder and level combined. The bellows is made of the very best Russia leather, folding very compact when camera is closed. A partition is also supplied that folds up with the bellows, and can be adjusted or detached at will. The shutter is the Bausch & Lomb Stereo,

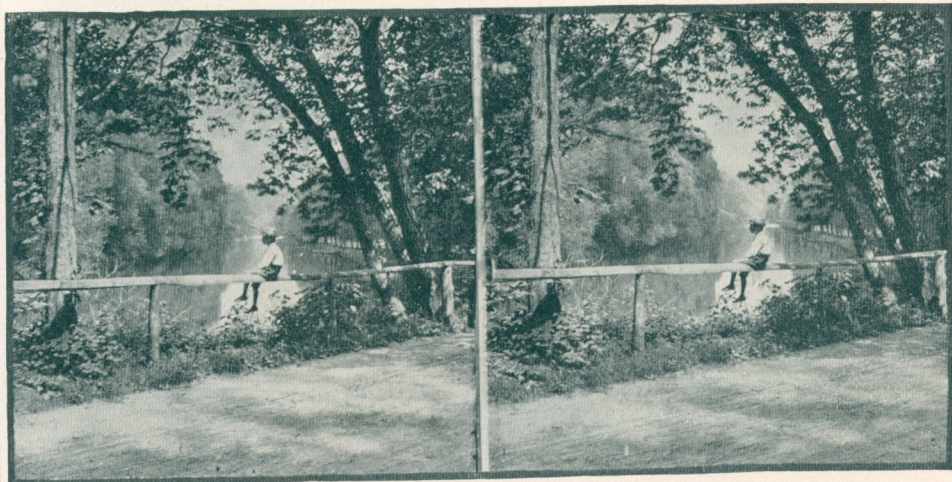


BRANCH OF ROCHESTER OPTICAL & CAMERA CO.

which is the best made for this class of work, working automatically from three seconds to one one-hundredth part of a second, having rotary diaphragms, hand and pneumatic release and time lever. The opening and closing of the leaves is absolutely synchronous, this making both pictures exactly alike. The lenses are a matched pair of Rochester Symmetrical, perfectly rectilinear and free from distortion and can be successfully used for all classes of stereo work. Wide-angle lenses of the Rochester Symmetrical series can be adjusted, and are interchangeable. If 5 x 7 pictures are desired, a 5 x 7 lens and shutter with an extra lens board can be supplied to fit. The camera can therefore be used, not only as a stereo instrument, but as a regular hand camera, when desired.

Stereo Camera complete, with Lenses, Shutter, and one Dry-plate Holder,	\$55.00
Pair Wide-angle Lenses, extra	16.00
5 x 7 Lens and Unicum Shutter, extra	15.00
Without Lens or Shutter.	25.00
Double Dry-plate Holders	1.25
Sole Leather Carrying-case and Shoulder Strap	3.00

**Specifications
and Prices.**



Taken with Stereo Poco.



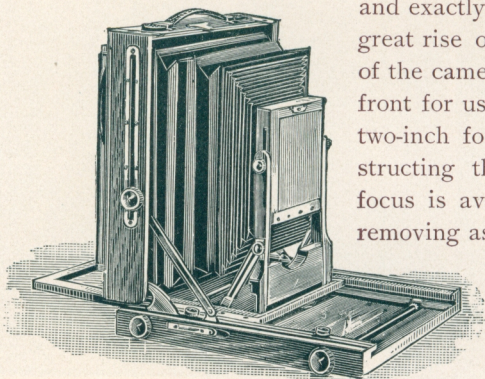
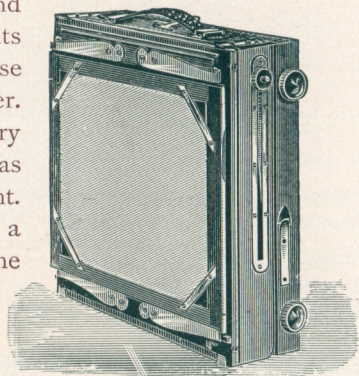
KING CAMERA

THE best camera known to the photographic art. The principal points aimed at in designing the camera were to produce an instrument that would combine every modern improvement of practical utility; compact and portable

as possible, consistent with strength and rigidity; that should be simple in its parts, so as to avoid difficulties in use and liability to easily get out of order. It has rising and falling front, with very great range in either direction. It has swinging motion both in back and front. The back may be swung in either a horizontal or vertical direction; the front in a vertical plane, the advantage being when the camera is used for photographing objects either above or below its level, the camera

may be tilted and the front and back be swung parallel to each other and exactly vertical, giving the advantage of a great rise or fall without distortion. The back of the camera is arranged to slide up close to the front for use with wide-angle lenses. A lens of two-inch focus can be used without the bed obstructing the view, yet the extreme range of focus is available. Compactness is obtained by removing as far as possible all projections; when closed, no working parts except the focusing screws project on the outside.

The camera box is square, the back being reversible, so that when

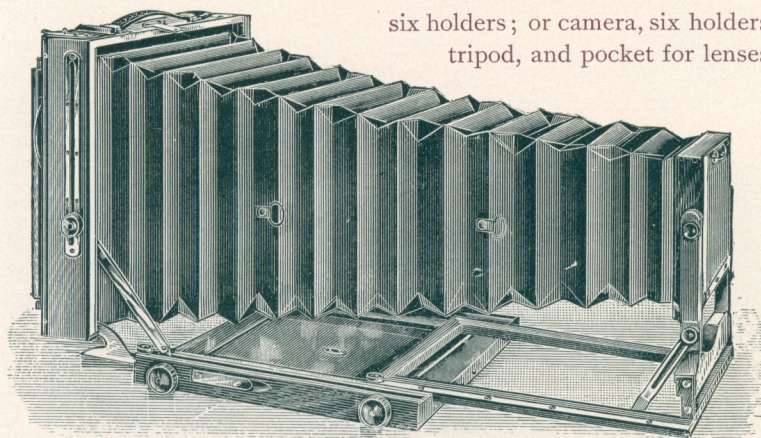


BRANCH OF ROCHESTER OPTICAL & CAMERA CO.

the view is wanted either horizontally or vertically on the plate, the change can be effected by simply reversing the back instead of the entire camera ; the slides may be drawn from top, bottom, or either side. The ground-glass screen is spring-actuated, which holds it in position and allows it to recede so as to insert the holder between the ground-glass and camera back.

The camera has no loose parts and is very easy and simple of manipulation. It has two fine rack-and-pinion focusing movements. A leather handle is provided so that it can be carried without the case if desired. All the wood parts are selected mahogany, highly polished, and all metal parts are made of brass, polished and lacquered. The bellows is made of the best Russia leather. The price of the King includes one holder and canvas case. When desired, cases will

be furnished to hold camera and
six holders ; or camera, six holders,
tripod, and pocket for lenses.



Size of view,	5 x 7,	Focal capacity, 17 inches,	Price	\$32.00
" " "	5 x 8,	" " 19½ "	"	32.00
" " "	6½ x 8½,	" " 21 "	"	35.00
" " "	8 x 10,	" " 24¾ "	"	36.00
" " "	11 x 14,	" " 33¼ "	"	45.00

Specifications
and Prices.



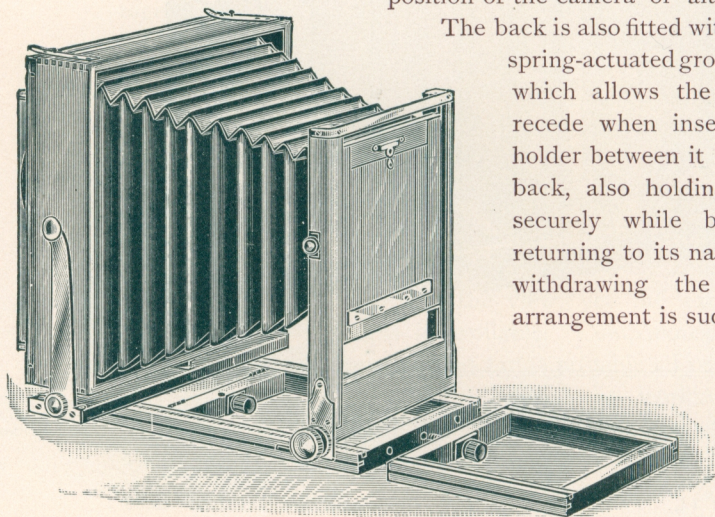
ROCHESTER VIEW

THIS camera is one of the best and most serviceable of all instruments of this character. It is a thorough and practical business camera, and can be recommended to both the professional and amateur photographer. Simplicity and compactness are the principal features embodied in its make-up. Strength has not been sacrificed on account of its simple construction, no pains having been spared in making it strong and rigid in every particular. It is, in fact, a model of lightness and strength.

The Rochester View Camera is made of the finest selected mahogany, very highly polished. All metal parts are made of the best brass, polished and lacquered. It is fitted with the reversible back, allowing views to be taken in either a horizontal or vertical position, by simply reversing the back instead of the camera. The change can be effected in an instant without interfering with the position of the camera or altering the focus.

The back is also fitted with our adjustable spring-actuated ground-glass screen, which allows the ground-glass to recede when inserting the plate-holder between it and the camera back, also holding it in position securely while being used and returning to its natural position on withdrawing the holder. The arrangement is such that the slides can be drawn from the top, bottom, or either side.

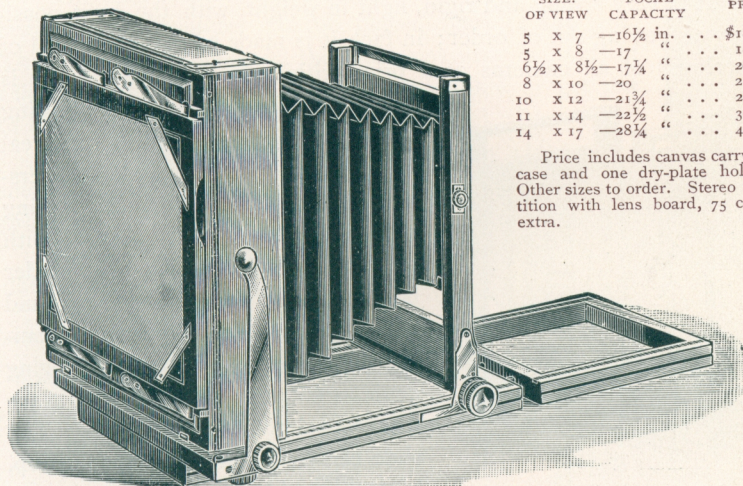
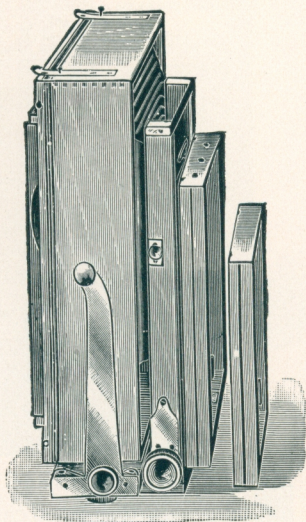
The camera is made with



BRANCH OF ROCHESTER OPTICAL & CAMERA CO.

both the vertical and horizontal swings, each swinging at the center. This is notably one of the special and most essential features in its construction; the center of the back always operates parallel with the front of the camera or lens. It is fitted with a fine rack-and-pinion focusing movement, the camera being focused from the front. Sizes 14 x 17 and larger focus from the rear, using the sliding movement. It has rising and falling front, cone-shaped bellows which is attached thereto, allowing front of bellows to be raised and lowered with the lens. The bellows is made in the best possible manner of selected bellows material. The cases are made strong and durable, of the best canvas, accommodating the camera and three regular dry plate-holders.

Wide front for stereo work can be adapted and will be supplied when so ordered; a partition also being adjusted to the camera.



SIZE. OF VIEW	FOCAL CAPACITY	PRICE
5 x 7	—16½ in.	... \$18.00
5 x 8	—17 "	... 18.00
6½ x 8½	—17¼ "	... 20.00
8 x 10	—20 "	... 22.00
10 x 12	—21¼ "	... 28.00
11 x 14	—22½ "	... 30.00
14 x 17	—28¼ "	... 40.00

Specifications and Prices.

Price includes canvas carrying case and one dry-plate holder. Other sizes to order. Stereo partition with lens board, 75 cents extra.



THE FAVORITE

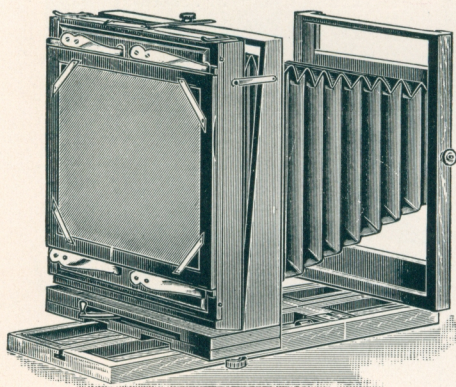


A favorite with all classes of photographers, both amateur and professional, but especially with the outdoor professional, for whom it was originally designed. All wood parts are of finest selected mahogany, highly polished; mountings

of polished and lacquered brass. Although listed at a popular price, the same general care is used in its manufacture as the costlier instruments, all work being done by fine mechanics under our personal supervision.

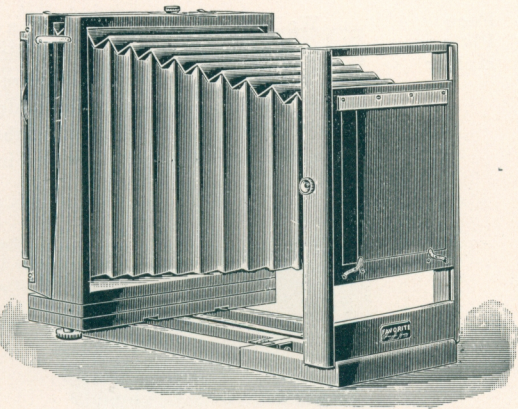
It is very strong and rigid, light in weight, with the least possibility of getting out of order; in fact, it is made to cover the field of usefulness of all cameras at a price within the reach of all. It is

fitted with reversible back, allowing the view to be taken in either a vertical or horizontal position, without reversing the camera. With the spring actuated ground-glass screen, with which it is equipped, the plate-holder is easily placed in position, the ground glass receding for this purpose, securing the holder while the view is being made, returning to its normal place when the holder is withdrawn. The slide can be withdrawn from the top, bottom, or either side.



BRANCH OF ROCHESTER OPTICAL & CAMERA CO.

The back focus allows any length or angle of lens to be used. It is operated by a quick-acting lever so placed that the focus can be instantly changed. Two tripod plates are furnished, which insures the balance of the camera on the tripod with lens of any length of focus.



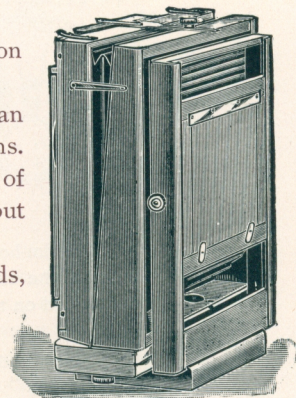
The adjustments also include the rising and falling front and double-swing back, thereby obtaining the required position when photographing objects at a higher or lower level than the camera. The front is made wide enough so that stereoscopic lenses can be used if desired.

The $6\frac{1}{2} \times 8\frac{1}{2}$ and 8×10 sizes have a cut-off division in order that two pictures may be taken on one plate.

The lens board is made sufficiently large so that an ordinary sized shutter can be placed back of the lens. The bellows is made in the best possible manner of selected bellows material, and will not crinkle or get out of shape when folded.

The weight of the $6\frac{1}{2} \times 8\frac{1}{2}$ size is only $4\frac{3}{4}$ pounds, measuring 10 x 5 x 12 inches. Other sizes in same proportion.

Price includes camera, carrying-case, and one double dry-plate holder.

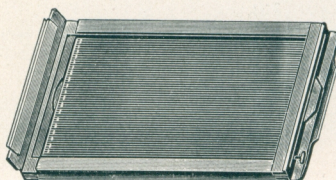


Size,	x	Focal capacity,	inches,	Price		Specifications and Prices.
5	7,	13 $\frac{3}{4}$			\$16.00	
"	8,	15 $\frac{5}{8}$	"	"	16.00	
"	8 $\frac{1}{2}$ x 8 $\frac{1}{2}$,	15 $\frac{5}{8}$	"	"	18.00	
"	8	18 $\frac{1}{4}$	"	"	18.00	
"	10,	23 $\frac{3}{4}$	"	"	24.00	
"	14,	28 $\frac{1}{2}$	"	"	30.00	

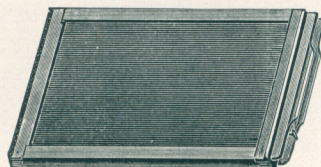


Poco Plate Holder

We introduced for last season an entirely new plate-holder, which has been patented, and is the most perfect device yet made for holding dry-plates for camera use. It is simplicity itself, as there are no springs or other devices for holding the plate in position. Simply lay the plate in the holder and insert the slide. To remove, draw the slide and pick out the plate. They are made of selected cherry, are small, light, and neat, and perfect in every detail.



Patented.



SIZE	PRICE
3¼ x 4¼, with Press Board Slides,	\$.75
4 x 5, " " " "	.75
5 x 7, " " " "	1.00
5 x 8, " " " "	1.00
6½ x 8½, " " " "	1.25
8 x 10, " " " "	1.50
10 x 12, " " " "	2.50
11 x 14, " " " "	3.00
14 x 17, " " " "	5.00
17 x 20, " " " "	6.00

SIZE	PRICE
3¼ x 4¼, with Hard Rubber Slides,	\$1.00
4 x 5, " " " "	1.00
5 x 7, " " " "	1.25
5 x 8, " " " "	1.25
6½ x 8½, " " " "	1.75
8 x 10, " " " "	2.00

Poco Film-Holders

The film-holder is interchangeable with the dry-plate holder. Either may be used on the same camera. They are very simple to load or unload, being constructed on the same general plan as the plate-holder.

SIZE	PRICE
3¼ x 4¼, with Card Board Slides, . . .	\$1.00
4 x 5, " " " " . . .	1.00
5 x 7, " " " " . . .	1.25

SIZE	PRICE
5 x 8, with Card Board Slides, . . .	\$1.75
6½ x 8½, " " " " . . .	2.10
8 x 10, " " " " . . .	2.35

Holder Slides

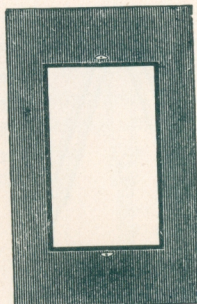
Both in hard rubber and black press board, fitting our regular dry-plate holders.

Size,	3¼ x 4¼	4 x 5	5 x 7	5 x 8	6½ x 8½	8 x 10	10 x 12	11 x 14
Hard Rubber, each,25	.25	.30	.35	.50	.65	.80	1.00
Press Board, "25	.30	.40	.50

In ordering Slides specify if for Rochester or for Poco holders.

BRANCH OF ROCHESTER OPTICAL & CAMERA CO.

Kits are made for holding small plates in large plate-holders. They fit in the holder the same as an ordinary plate; the opening in the center holding the smaller plate by means of a small button.

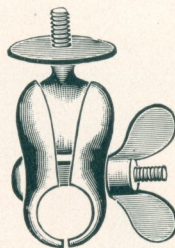


**Holder
Kits**

SIZE OUTSIDE	SIZE OF OPENING FOR PLATE	PRICE
4 x 5	— $3\frac{1}{4}$ x $4\frac{1}{4}$ or $3\frac{1}{4}$ x 4, each,	\$.20
5 x 7	— $3\frac{1}{4}$ x $4\frac{1}{4}$ or 4 x 5, each,25
5 x 8	— $3\frac{1}{4}$ x $4\frac{1}{4}$ or 4 x 5 or $4\frac{1}{4}$ x $6\frac{1}{2}$, each,25
$6\frac{1}{2}$ x $8\frac{1}{2}$	— $3\frac{1}{4}$ x $4\frac{1}{4}$ or 4 x 5 or 5 x 7 or 5 x 8, each,30
8 x 10	—5 x 7 or 5 x 8 or $6\frac{1}{2}$ x $8\frac{1}{2}$, each,35
10 x 12	— $6\frac{1}{2}$ x $8\frac{1}{2}$ or 8 x 10, each,40
11 x 14	—8 x 10 or 10 x 12, each,50

This clamp is designed to use as a tripod for wheelmen; adjusting it to the handlebar of the wheel and fitting the camera to it as on any ordinary tripod. It is made of brass, nicely nickeled. Is adjustable, and will fit any handlebar.

Price, \$.75



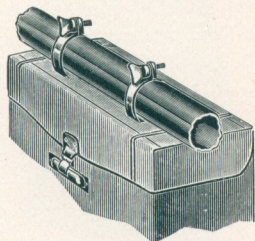
**Bicycle
Clamp**

For carrying the camera on a wheel when enclosed in a case. It is easily adjusted and can be removed in an instant. It is made of brass, nickeled and polished, and is adjustable to any wheel. It is fitted to the carrying-case and then to the top frame of the wheel or handlebar.

The case containing the camera can be attached instantly, and when so attached is solid and rigid, there being no play whatever to loosen the case or scratch the frame of the wheel.

When taking the camera from the case, it is not necessary to remove the case from the carrying attachment, but it can be removed and replaced at will.

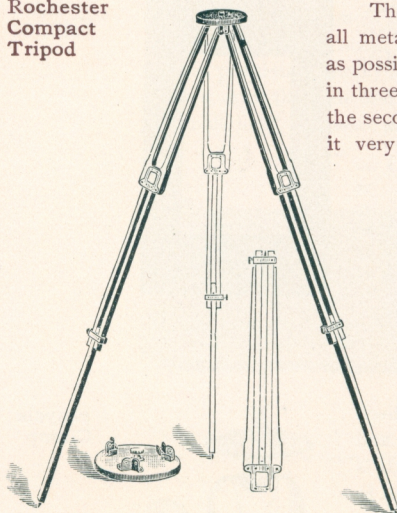
Price, complete, \$1.00



**Cycle
Camera
Carrier**



**Rochester
Compact
Tripod**

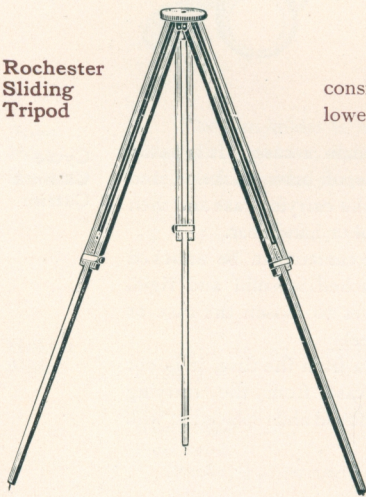


The Compact Tripod is made of the best selected spruce, all metal parts of brass; the object being to make it as light as possible consistent with rigidity and strength. It is made in three sections to fold and slide; the lower part sliding into the second and the top part folding down over both, making it very convenient to carry. It can be adjusted to any required length. When extended it is 4 feet 10 inches long, while it is but 23 inches in length when folded or closed.

The new top is so made that the legs, when adjusted, are practically locked, avoiding any possibility of their becoming detached by accident after the tripod is placed and ready for use. The tripod screw is arranged to always remain in the top.

NO. FOR SIZES OF CAMERAS	PRICE
1. $3\frac{3}{4} \times 4\frac{1}{4}$ or 4×5 or $4\frac{1}{4} \times 6\frac{1}{2}$,	\$2.00
2. 5×7 or 5×8 or $6\frac{1}{2} \times 8\frac{1}{2}$,	2.50
3. 8×10 or 10×12 ,	3.00
4. 11×14 or 14×17 ,	3.50

**Rochester
Sliding
Tripod**



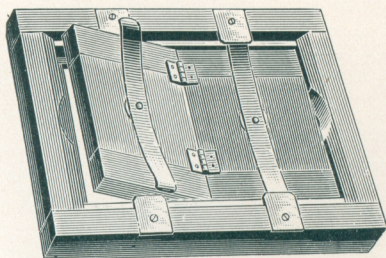
The Sliding Tripod is made of spruce, is very light in consideration of its strength, and is made in two sections, the lower half sliding within the other. It can be clamped at any desired position. The legs are fastened to the top, leaving the tripod always together and complete. The top, which is wood, is covered with soft cloth to keep from marring or defacing the camera, except the No. 1, which is made of brass. It is suitable for both view and hand cameras.

No.	PRICE
No. 1, for hand cameras,	\$1.50
No. 2, for all sizes up to 5×8 ,	2.00
No. 3, " " " 8×10 ,	2.50
No. 4, " " " 11×14 ,	3.00
No. 5, " " " 18×22 ,	3.50

BRANCH OF ROCHESTER OPTICAL & CAMERA CO.

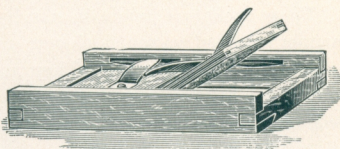
These frames are made very heavy and substantial of solid cherry. The springs are of the best spring brass, riveted to the back, a washer being placed between, allowing the spring to move freely without defacing the wood. The ears are set flush with frame to prevent defacing and setting solid when piled upon one another. The hinges are also riveted.

**Rochester
Printing
Frame**



SIZE	PRICE
5 x 7,	\$.40
5 x 8,45
6½ x 8½,50
8 x 10,60
10 x 12,80
11 x 14,	1.45
14 x 17,	2.15
16 x 20,	2.40
17 x 20,	2.60

This frame is made especially for amateur use. It is made light and strong of the best seasoned cherry and spring brass; springs being riveted to the back.



**Poco
Printing
Frame**

SIZE	PRICE
3½ x 3½,	\$.15
3¼ x 4¼,15
4 x 5,20

SIZE	PRICE
4¼ x 6½,	\$.20
5 x 7,25



Having an easel attachment which permits the frame to stand alone at any angle. Made of japanned iron, it will not warp or twist, is non-breakable, light and convenient, filling a long-felt want. It offers advantages no other amateur frame possesses. Casts no shadows when printing; prints to the full size of the plate, a very important feature.

**Cyclone
Printing
Frame**

SIZE	PRICE
3½ x 3½, each,	\$.25
3¼ x 4¼, "25
4 x 5, "25
5 x 7, "35



Poco View-Finder

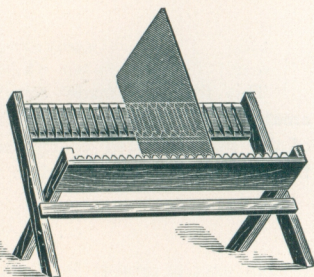
In shape and general appearance it is similar to all other view-finders, and its field of usefulness is far superior. The top or glass on which the view appears is also utilized as a level. The top of the glass is slightly concaved and a steel ball rests on it, always at its lowest point. When the camera, to which the finder is attached, is held level the ball will rest and appear in the centre of the finder at the intersection of a cross mark placed upon the glass. When the camera is tipped from side to side, the ball will roll to the position in which the camera is held.

	SIZE				PRICE
No. 1.	1 $\frac{1}{8}$ in. long,	1 $\frac{3}{8}$ in. wide,	1 $\frac{3}{8}$ in. high,	\$ 2.00
No. 2.	1 $\frac{1}{8}$ " " "	1 " " "	1 $\frac{1}{8}$ " " "	2.00
No. 3.	1 $\frac{1}{8}$ " " "	$\frac{3}{4}$ " " "	1 " " "	2.00
No. 4.	1 $\frac{1}{8}$ " " "	$\frac{3}{4}$ " " "	$\frac{3}{4}$ " " "	2.00

Rochester Negative Racks

These racks are made in a substantial manner of best seasoned cherry, and will hold any size of negative. They are very convenient, as they keep the negatives from becoming scratched while drying. They fold up flat when not in use.

	PRICE
No. 1. For holding 12 Small Negatives, . . . \$.15
No. 2. For holding 24 Med. Size Negatives,20



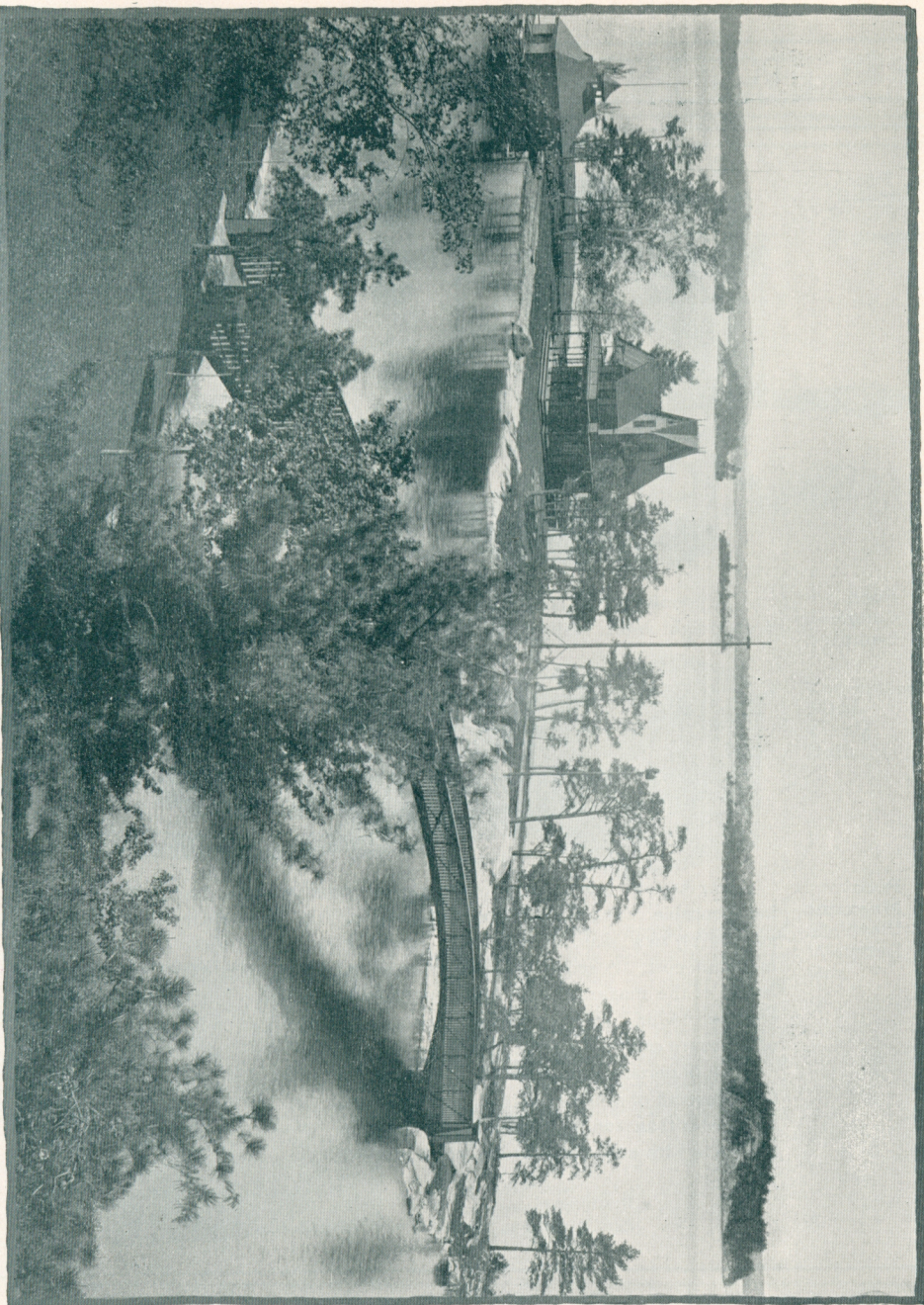
Cyclone Trimming Board



A first-class print trimmer at a reasonable price. This trimmer has a tempered steel knife, with finely ground edge, and will cut tissue paper, prints, cards, board and tin. It will last a lifetime.

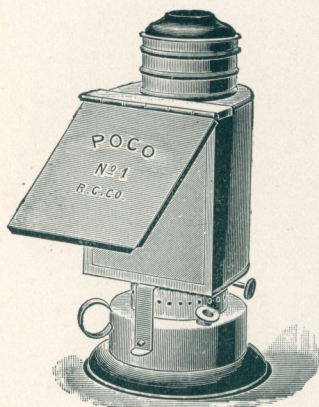
	PRICE
No. 11 will cut up to 7 inches in width,	\$2.00
No. 12 will cut up to 8 $\frac{1}{2}$ inches in width,	2.25
No. 13 will cut up to 10 inches in width,	2.50

Taken with 5 x 7 Tele Photo Poco A.





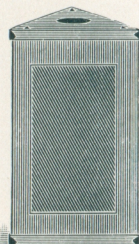
Poco Lamp



We place broad claims on this lamp for perfection of light, combustion, evenness of flame, whether turned high or low, and absence of smoke or smell. It is made upon the improved plan of central draught, giving a volume of light never before attained in a dark-room lamp. It is regulated from the outside, allowing it to be turned up or down without opening.

PRICE

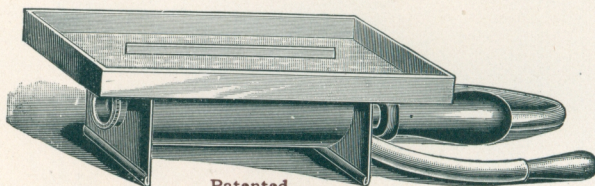
- No. 1, with ruby glass, . . . \$.75
- " 2, with ruby and orange glass, 1.00
- " 3, with ruby and orange glass, 1.50



Poco Candle Lamp

A popular priced lamp for the amateur, well suited for the dark room. Gives a good light and is easily cared for. Folds completely when not in use.

Price, \$.50



Patented.

Poco Magazine Flash Lamp

For certain branches of photographic work a Flash Lamp is practically indispensable. The Poco Magazine Lamp, for Pure Magnesium, is constructed on an entirely new plan, by which an immense volume of light is procured at a minimum cost. A series of jets is arranged on an inner tube running the entire length of the magazine, and upon applying air pressure, the powder is kept in a constant "whirl," insuring perfect combustion and an even light. The duration of exposure can be varied at will.

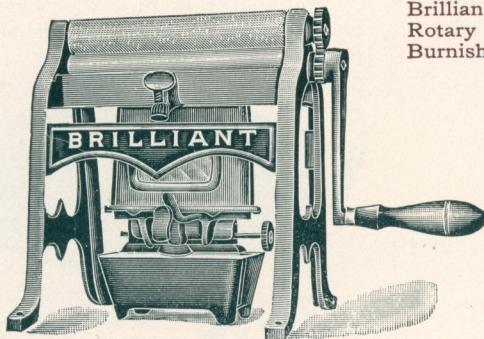
An important feature of the Poco lamp is the fact that it gives a *solid sheet* of flame instead of a narrow streak. Its illuminating power is, therefore, necessarily far greater than can be obtained from lamps of the latter type. Each Lamp is furnished with a tin cover or lid, which also serves as an extinguisher.

PRICE

- Neatly boxed, \$1.25
- Pure Magnesium, fine ground, per ounce,40

BRANCH OF ROCHESTER OPTICAL & CAMERA CO.

The latest, cheapest and best burnisher for the money ever placed on the market. There is no complicated mechanism to get out of order, and all adjustments are simplicity itself. It is geared for the most brilliant effects. We are able to make the price within the reach of every amateur as well as professional photographer. Supplied with either oil or gas heater. In ordering please specify which is desired, otherwise the oil heater will be furnished.

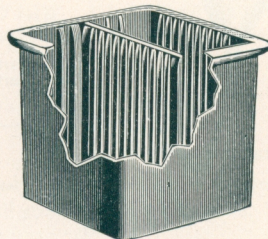


**Brilliant
Rotary
Burnisher**

	PRICE
6 inches,	\$5.00
8 "	6.00

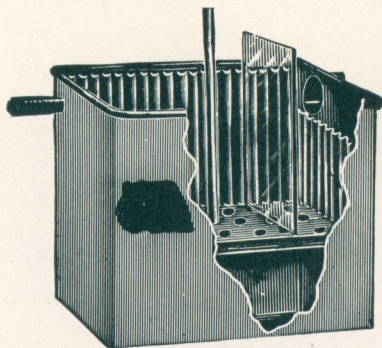
	PRICE
10 inches,	\$ 8.00
12 "	10.00

Guaranteed to be proof against acid and alkali and will conveniently hold any size plate or cut film up to size listed. The bath will hold 24 plates, by placing two negatives in each groove, back to back.



**Compressed
Fibre
Fixing
Bath**

	PRICE
4 x 5, each,	\$2.00
5 x 8, "	2.25
8 x 10, "	3.50



A thoroughly practical, well-made washer at a low price. The water enters by attaching a rubber hose to the small tube at the top, which extends to the bottom of the box; here the water is distributed and goes up through the perforated bottom and flows out through the large tube at the other side.

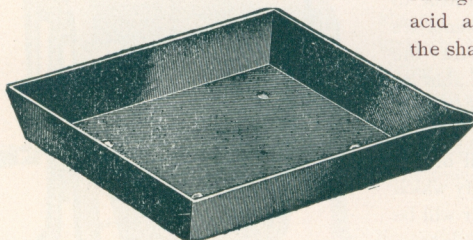
**Zinc
Washing
Box**

	PRICE
No. 1, for plates $3\frac{1}{4} \times 4\frac{1}{4}$, . . .	\$1.00
No. 2, for plates 4×5 and 5×7 , .	1.00
Adjuster for small sizes,20



Developing Trays

The Compressed Fibre Trays are acknowledged to be the best developing trays ever put on the market. They are black in color, very smooth, handsome and strong. Guaranteed to be proof against acid and alkali. They are made in the shallow and deep shapes, the deep trays having a lip to facilitate emptying. Both have knobs on the bottom to stand on.



SIZE	PRICE
3 1/4 x 4 1/4,	\$.20
4 x 5,25
5 x 7,45
5 x 8,50
6 1/2 x 8 1/2,70
8 x 10,	1.00

GLASS TRAYS—A good tray. Very smooth and easily kept clean.

SIZE	PRICE
4 x 5,	\$.30
5 x 8,40

Funnels and Graduates



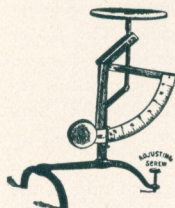
GLASS FUNNELS.

SIZE	PRICE
1/2 pint,	\$.12
1 pint,15
1 quart,20
2 quart,25

GRADUATED GLASSES—For measuring liquids. Marked accurately for drachms and ounces.

Minim,	\$.25
1 ounce,20
2 ounce,25
4 ounce,30
8 ounce,40
16 ounce,75

Photo Scales



The best scale for the money yet offered; no springs to get out of order; very reliable and convenient; weighs up to twelve drachms; glass tray; easily cleaned.

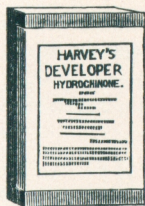
Price, each, \$.75

Rochester Mounting Paste

For mounting photographs, very adhesive. It never sours or molds, as it is of superior quality. Put up in glass jars.

SIZE	PRICE
1/2 pint jar,	\$.15
1 pint jar,25

BRANCH OF ROCHESTER OPTICAL & CAMERA CO.

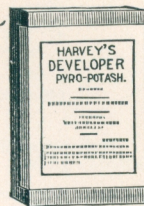


As a general developer it cannot be surpassed. It assures perfect control of the plate, no matter what length of exposure has been given. Put up in two bottles in cardboard box. Sufficient amount to develop six or seven dozen 4 x 5 plates.

Per box, \$.50

Gives clear black-and-white negatives. Desirable for transparencies; will not stain the fingers, and can be used repeatedly until strength is entirely gone. Put up in two bottles, in cardboard box. Sufficient amount to develop six or seven dozen 4 x 5 plates.

Per box, \$.50



Harvey's Hydrochinone
(Concentrated)

Harvey's Pyro Potash
(Concentrated)



Gives soft, brilliant negatives, easy of manipulation. Can be used repeatedly until strength is entirely gone. Put up in one bottle, in cardboard box. Sufficient amount to develop six or seven dozen 4 x 5 plates.

Per bottle, 8 ounces, \$.50
Per bottle, 12 ounces,65

Harvey's Eikonogen
(Concentrated)

For toning Gelatine paper. This solution is ready for use, and is a combined toning and fixing bath. Can be used repeatedly until strength is entirely gone.

8 ounce bottle, \$.40
16 ounce bottle,60

Harvey's Toning Solution

Negatives from which a quantity of prints are to be made should always be varnished to prevent injury to the film.

4 ounce bottle, \$.30
8 ounce bottle,50

Harvey's Negative Varnish

Invaluable for strengthening weak negatives.

4 ounce bottle, \$.25
8 ounce bottle,40

Harvey's Intensifier
(Concentrated)

These powders are put up in dry form. The contents need only to be dissolved in water, and the developer is ready for use. We offer the following combinations: Pyro, Hydrochinon, Eikonogen, Trenol, Trenol-Hydrochinon, Eikonogen-Hydrochinon.

Price, per box of 6, small size, \$.25
Price, per box of 6, large size,50

Developing Powders



ROCHESTER CAMERA & SUPPLY CO.



Brushes



BRISTLE—For mounting photographs.

SIZE	PRICE
1 inch wide,	\$.15
1½ " "20
2 " "25
2½ " "30
3 " "40

CAMEL'S HAIR—For dusting off plates and negatives.

SIZE	PRICE
1 inch wide,	\$.25
1½ " "40
2 " "50
2½ " "60
3 " "80

Ground Glass

4 x 5,	\$.15
5 x 7,20
5 x 8,20
6½ x 8½,25

8 x 10,	\$.35
10 x 12,50
11 x 14,70
14 x 17,	1.00

Focusing Cloth

Indispensable for focusing on the ground glass.

PRICE	PRICE
Gossamer, \$.50	Velvet, \$1.00

Ferrotypes Plates

These plates have a highly polished surface. Are used for drying Gelatine or Bromide papers, when a glossy finish is desired without burnishing. They cannot be sent by mail.

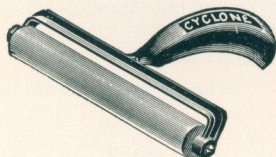
10 x 14 inches, each,	\$.25
---------------------------------	-------

Squeegee Roller

For pressing prints on cards when mounting. Keeping the prints very smooth and even without mutilating.

PRICE	PRICE
6 inch roll,80	12 inch roll, \$1.25

Print Roller



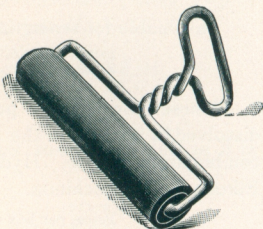
For mounting photographs. Indispensable to the amateur, well made of japanned iron with rubber rollers.

4 inch, each	\$.25
6 " "40

Wire Handle Roller

Made with handle set at right angles with roller, so as to give the operator full control over its movements, a decided improvement over the old style.

4 inch, each,	\$.20
-------------------------	-------





ROCHESTER CAMERA & SUPPLY CO.



Gelatin Paper

A brilliant printing-out paper, having all the good features and none of the bad. Any tone can be produced at the will of the operator, clear whites and a fullness of detail. It need not be toned immediately after printing, if not convenient to do so. Full directions with each package.

SIZE					
3	x 4,	for 3¼—4¼ Negatives,	2 dozen, \$.20	Per gross, \$1.15
4	x 5,	2 "	.25	" " " 1.25
3½	x 5½,	Cabinets,	1 "	.20	" " " 1.35
5	x 7,	1 "	.30	" " " 2.65
5	x 8,	1 "	.30	" " " 3.00
6½	x 8½,	1 "	.45	" " " 4.25
8	x 10,	1 "	.60	" " " 6.50
Cabinet Seconds,					" " 1.10
4	x 5	Trimmed			" " 1.00

Printing Out Matte Paper

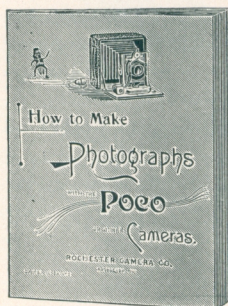
SIZE		FOR BLACK AND WHITE PICTURES.			
3¼	x 4¼,	2 dozen, \$.30	Per gross, \$ 1.50
4	x 5,	1 "	.20	" " 1.65
5	x 7,	1 "	.35	" " 3.20
5	x 8,	1 "	.40	" " 3.60
6½	x 8½,	1 "	.55	" " 5.10
8	x 10,	1 "	.75	" " 7.80

Blotting Paper

A valuable aid to the amateur for drying prints.

SIZE			PRICE
9	x 12 inches, per dozen sheets,		\$.30
12	x 19 " " " "55
19	x 14 " " " "		1.10

How to Make Photos



We have compiled a little book, more especially for beginners, touching on the manipulation of our make of cameras; also the process of taking pictures, developing, toning and printing; how they should be done, how to get the best results; definite receipts for making solutions, etc., which is a very valuable work, not alone to the beginner, but to all amateurs. It is the most concise and practical work of the kind ever published.

Price, \$.10

BRANCH OF ROCHESTER OPTICAL & CAMERA CO.

For the large number of amateurs who prefer not only to "take" pictures, but finish them as well, we have arranged the following complete outfits, comprising all necessary articles for developing the negative and making the print.

Developing and Printing Outfit

Outfit No. 1.

- 3 Fiber Trays.
- 1 Bottle Developer.
- 1 Printing Frame.
- 1 pound Hypo Soda.
- 1 Ruby Lamp.
- 1 Measuring Glass.
- 1 dozen Printing Paper.
- 1 Tube Developer.
- 1 Book Directions.



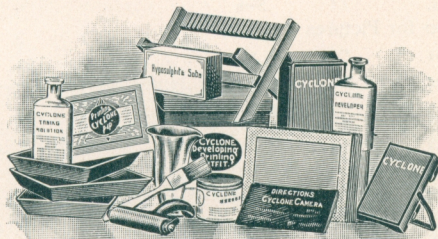
Price, neatly boxed $3\frac{1}{4} \times 4\frac{1}{4}$ \$1.50; 4×5 , \$1.50; 5×7 , \$2.50

Special Outfit No. 2.

This outfit contains a greater variety of accessories than No. 1, also our popular Poco Dark Room Lantern. It includes:

Developing and Printing Outfit

- 3 Fiber Trays.
- 1 Bottle Developer.
- 1 Poco Lamp.
- 1 Printing Frame and Easel.
- 1 pound Hypo. Soda.
- 1 dozen Printing Paper.
- 1 Negative Rack.
- 1 Tube M. Q. Developer.
- 1 Jar Paste.
- 1 Paste Brush.
- 1 dozen Card Mounts.
- 1 Book Directions.
- 1 Squeegee Roller.
- 1 Graduate.



Price, $3\frac{1}{4} \times 4\frac{1}{4}$, \$2.50; 4×5 , \$2.50; 5×7 , \$3.50; $6\frac{1}{2} \times 8\frac{1}{2}$, \$5.00; 8×10 , \$6.50

They are made of strong, heavy manila paper the proper size for the negative, are shaped like an ordinary envelope, but open on the end for the insertion of the plates, a space being cut for the thumb and finger for convenience in removing them. On the face are printed lines for name, number, description, and remarks. They are invaluable for preserving the negative from dust, scratches, etc. Put up in packages of fifty each.

Negative Preservers

Size $3\frac{1}{4} \times 4\frac{1}{4}$, per package, price, . . .	\$.20
" 4×5 , " " " " " " " "	.20
" $4\frac{1}{4} \times 6\frac{1}{2}$, " " " " " " " "	.25
" 5×7 , " " " " " " " "	.30

Size 5×8 , per package, price, . . .	\$.30
" $6\frac{1}{2} \times 8\frac{1}{2}$, " " " " " " " "	.35
" 8×10 , " " " " " " " "	.45
" 10×12 , " " " " " " " "	.75



CARD MOUNTS.

We have recently equipped a factory with the latest improved machinery for the manufacture of photographic card mounts, and are in a position to supply amateur card mounts of strictly new and up-to-date designs at lowest market price.

Medium weight, embossed mounts ; white enameled, queen's gray, tea, and sage green, with wide embossed border of an attractive design.

Price-List	No.	Size	Per Doz.	Per 100	Per 1000
	100	for Pictures 1 1/2 x 2,	\$.10	\$.45	\$ 3.50
	101	" " 2 x 2,10	.45	4.00
	102	" " 2 1/2 x 2 1/2,10	.55	4.50
	103	" " 2 1/4 x 3 1/4,10	.60	5.00
	104	" " 3 1/2 x 3 1/2,15	.70	6.00
	105	" " 3 1/4 x 4 1/4,15	.75	6.50
	106	" " 4 1/4 x 4 1/4,15	.80	7.00
	107	" " 4 x 5,15	.90	8.00
	108	" " 5 x 7,20	1.35	12.50

Extra heavy, white enameled, queen's gray, tea, and sage green, with wide embossed border of an attractive design.

No.	Size	Per Doz.	Per 100	Per 1000
200	for Pictures 1 1/2 x 2,	\$.10	\$.50	\$ 4.00
201	" " 2 x 2,10	.55	4.50
202	" " 2 1/2 x 2 1/2,10	.60	5.00
203	" " 2 1/4 x 3 1/4,10	.65	5.50
204	" " 3 1/2 x 3 1/2,15	.75	6.50
205	" " 3 1/4 x 4 1/4,15	.80	7.00
206	" " 4 1/4 x 4 1/4,15	.90	8.00
207	" " 4 x 5,15	1.00	9.00
208	" " 5 x 7,25	1.60	15.00

White enameled center, tinted gray, embossed border ; design same as No. 200, extra heavy stock.

No.	Size	Per Doz.	Per 100	Per 1000
300	for Pictures 1 1/2 x 2,	\$.15	\$.80	\$ 7.00
301	" " 2 x 2,15	.85	7.50
302	" " 2 1/2 x 2 1/2,15	.90	8.00
303	" " 2 1/4 x 3 1/4,15	.95	8.50
304	" " 3 1/2 x 3 1/2,20	1.05	9.50
305	" " 3 1/4 x 4 1/4,20	1.10	10.00
306	" " 4 1/4 x 4 1/4,20	1.20	11.00
307	" " 4 x 5,20	1.35	12.50
308	" " 5 x 7,30	2.10	20.00

BRANCH OF ROCHESTER OPTICAL & CAMERA CO.

CARD MOUNTS.—Continued.

White enameled center; sage green, embossed border; design same as Nos. 200 and 300; extra heavy stock.


No.	Size	Per Doz.	Per 100	Per 1000	Price-List
400 for Pictures	1½ x 2,	\$.15	\$.80	\$ 7.00	
401 “ “	2 x 2,15	.85	7.50	
402 “ “	2½ x 2½,15	.90	8.00	
403 “ “	2¼ x 3¼,15	.95	8.50	
404 “ “	3½ x 3½,20	1.05	9.50	
405 “ “	3¼ x 4¼,20	1.10	10.00	
406 “ “	4¼ x 4¼,20	1.20	11.00	
407 “ “	4 x 5,20	1.35	12.50	
408 “ “	5 x 7,30	2.10	20.00	

Plain mounts, of good quality, in white enameled, queen's gray, tea, and sage green.

No.	Size	For Pictures	Per Doz.	Per 100	Per 1000
500	2¾ x 2¾,	2½ x 2½,	\$.05	\$.25	\$ 1.75
501	3¾ x 3¾,	3½ x 3½,05	.35	2.75
502	3½ x 4½,	3¼ x 4¼,05	.35	2.75
503	4¼ x 5¼,	4 x 5,10	.45	3.75
504	5¼ x 7¼,	5 x 7,15	.75	6.50

White enameled one side, gilt beveled edge, round corners.

600 for Pictures	2½ x 2½,	\$.05	\$.35	\$ 3.00
601 “ “	3½ x 3½,08	.55	5.00
602 “ “	3¼ x 4¼,10	.70	6.50
603 “ “	4 x 5,10	.75	7.00
604 “ “	5 x 7,15	1.15	11.00

 When less than 100 card mounts are ordered the dozen price will be charged; 100 to 500 will be billed at the hundred price; 500 or over at the thousand price.

Number, . . .	1	2	3	4	5	6	7	8	9	10	11	Lens Flanges
Diameter, in., .	1½	1¾	2	2¼	2½	3	3½	4	5	5½	6	
Price, each, . .	\$.50	.50	.75	1.00	1.00	1.25	1.50	1.75	2.00	2.50	3.00	

Number, . . .	1	2	3	4	5	6	7	8	9	10	11	12	Lens Caps
Diameter, in., .	1½	1¾	1⅞	2⅛	2⅜	2½	2¾	3⅛	3⅞	4⅛	4⅞	5⅞	
Price, each, . .	\$.60	.60	.65	.70	.70	.75	.80	.90	1.00	1.10	1.20	1.25	

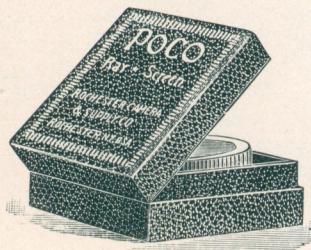


Ray Screen

The Ray Screen, for cloud photography, etc., is of great value in out-door photography, screening out the violet and blue rays of light which acts stronger on the plate than any other color, giving a more equal exposure to the sky, clouds, and landscape. By using the screen a more perfect picture may be obtained, and the most beautiful cloud effects produced. The Ray Screen consists of a polished brass ring, into which is set the perfect yellow or orange glass, and held in place by a ring of cork, this cork ring fitting the lens tube and holding all in place as a lens cap. The diameter given in the list is the largest lens it will fit.

Any smaller lens may be adjusted. When ordering give diameter of lens they are to be used with. Put up in a neat leather plush-lined case.

NO.	OUTSIDE DIAMETER	WILL FIT LENS OF DIAMETER	PRICE
1	1½ inches	1¼ inches	\$.75
2	2 "	1¾ "	1.00
3	3¼ "	2½ "	1.25



Stereoscopic Exposure



This device is made of mahogany, and is designed for time exposures with stereoscopic cameras, the object being to expose both lenses simultaneously, although it can be operated very rapidly.

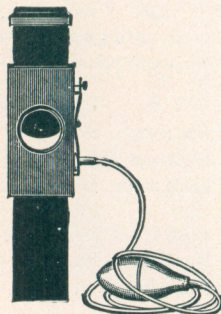
Price, \$2.00

Drop Shutter

The Drop Shutter is made of mahogany with cherry slide, the opening being made on scientific principles, the slide working by the aid of a rubber band. It is padded on top by a thin sheet of rubber, lessening the concussion when an exposure is made.

Made in three sizes, with 1¼, 2½, and 3¼ inch openings.

Price, \$1.00





Taken with Ray Screen, showing detail and cloud effects.

RAYGRAPH.

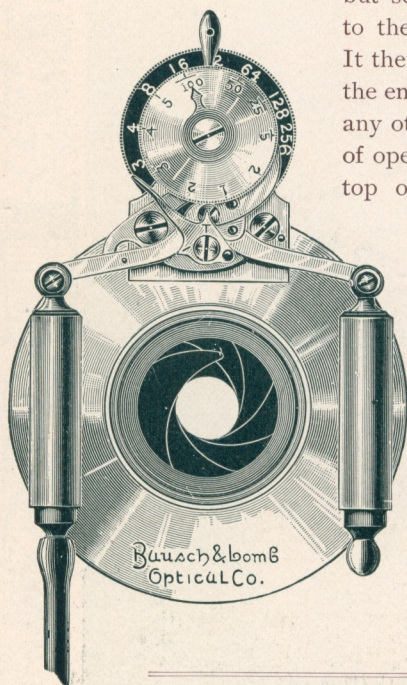
Photo by Murdock, Minneapolis.



DIAPHRAGM SHUTTER.



HE Diaphragm Shutter was designed for those amateur and professional photographers who desire a strictly first-class, high-grade shutter, for both in-door and out-door work. It is constructed on the most scientific principles, the leaves of the diaphragm not only regulating the size of the aperture, but serving as the shutter, the diaphragm opening to the required aperture and closing automatically. It therefore equalizes the distribution of light over the entire plate more perfectly than is possible by any other construction. The variation in the size of opening is made by turning the black disc at the top of shutter, and is marked for both the symmetrical and wide-angle lens.



The front dial is for regulating exposures, the shutter working automatically and making an exposure of from three seconds to one one-hundredth part of a second, and by simply moving a small lever, it may be set for time exposures of any desired duration, the lever being marked **I** for instantaneous and **T** for time. It is provided with safety device, so that no exposure can be made while setting the shutter. The shutter is set by turning the small lever at the top to the left. The manipulation is perfect and very simple.

When fitted to Rochester Symmetrical or Zeiss Anastigmat Lenses.

Specifications and Price of Shutter Only.	Size,	Opening of Largest Stop,	Price
	4 x 5,	$\frac{7}{8}$ inches,	\$14.00
	5 x 8,	$1\frac{1}{8}$ "	15.00
	$6\frac{1}{2}$ x $8\frac{1}{2}$,	$1\frac{3}{8}$ "	16.00
	8 x 10,	$1\frac{3}{4}$ "	17.50

When fitted to Lenses of Other Manufacture.

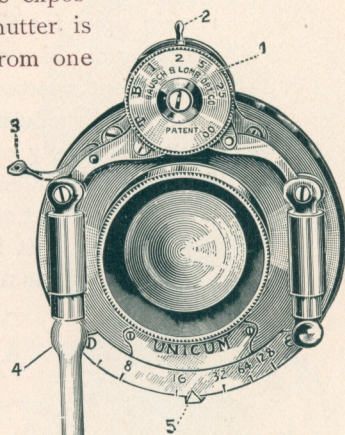
Size, 4 x 5,	Price,	\$14.50	Size, $6\frac{1}{2}$ x $8\frac{1}{2}$,	Price,	\$16.50
5 x 8,	"	15.00	8 x 10	"	18.00

BRANCH OF ROCHESTER OPTICAL & CAMERA CO.

UNICUM SHUTTER.

THE Unicum Shutter embodies principles of its own in construction, and is without doubt the most popular with all classes of photographers. Its manipulation is very simple, equipped as it is with every device known that can be used to advantage. It has both finger and pneumatic release, together with dial indicating instantaneous, bulb, or time exposures, also the different speeds at which the shutter is desired to operate, it works automatically from one second to one one-hundredth part of a second, or any fraction between by simply revolving disc No. 1 to the desired speed.

Time exposures are made by placing letter **T** at indicator; one pressure of bulb will open the shutter, the second pressure closing it. When letter **B** is at indicator, one pressure of bulb will open it; when pressure is released, it will close. The iris diaphragms are regulated by moving lever **5** to the right or left until the desired aperture is obtained, as is indicated by numbers on the scale.



When fitted to Lens of Our Own Manufacture without Barrel.

Size, 4	x 5,	Size of Largest Diaphragm, $\frac{3}{4}$ inches,	Price	\$ 8.00
" 5	x 7,	" " " I "	"	9.00
" $6\frac{1}{2}$	x $8\frac{1}{2}$,	" " " I $\frac{5}{8}$ "	"	10.00
" 8	x 10,	" " " I $\frac{5}{8}$ "	"	12.00

Specifications
and Price of
Shutter Only.

When fitted to Lenses of Our own Manufacture with Extra Barrel.

Size, 4	x 5,	Size of Largest Diaphragm, $\frac{3}{4}$ inches,	Price	\$ 9.00
" 5	x 7,	" " " I "	"	10.00
" $6\frac{1}{2}$	x $8\frac{1}{2}$,	" " " I $\frac{5}{8}$ "	"	11.50
" 8	x 10,	" " " I $\frac{5}{8}$ "	"	14.00

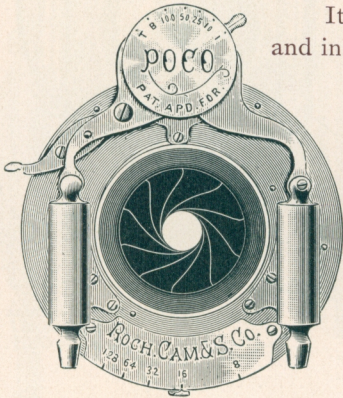
When fitted to Lenses of Other Manufacture Leaving Barrel Intact.

Size, 4	x 5,	Size of Largest Diaphragm, $\frac{3}{4}$ inches,	Price	\$10.00
" 5	x 7,	" " " I "	"	11.00
" $6\frac{1}{2}$	x $8\frac{1}{2}$,	" " " I $\frac{5}{8}$ "	"	13.00
" 8	x 10,	" " " I $\frac{5}{8}$ "	"	15.00



POCO SHUTTER.

THE Poco Shutter is one of the additions and improvements that we have made to our photographic line for this season. It is the nearest perfect shutter made—being small, handsome, and equipped with every required action. It is manufactured on a practical and scientific principle of optical facts. The shutter blades of the Poco, by a quick action, open and remain open for the proper exposure, and by a quick action close, requiring one size of diaphragm to do the work in place of a series of different apertures which must of necessity cause a blur to the picture, as the change of photographic effects goes on while the shutter is slowly opening and closing. Actual tests with one lens fitted to the different shutters, and exposures made on the same object afford satisfactory proof.



It is equipped with all requirements for time, slow and instantaneous exposure, it has the retarding feature, iris diaphragms, safety device for setting shutter, and can be operated either by hand or the bulb and hose with which it is supplied; it meets all requirements for very fast instantaneous exposures, such as moving trains, trotting horses, and other fast moving objects, although we disclaim its suitability for this class of work unless under proper management. It gives automatically any exposure from one one-hundredth part of a second to one second, and with time lever set, an exposure of any duration, it gives absolutely

uniform illumination, working practically noiseless without jar, and is particularly adapted to hand cameras. The manipulation is simple, its construction being such that it will not get out of order. It is made in two sizes only, 4 x 5 and 5 x 7.

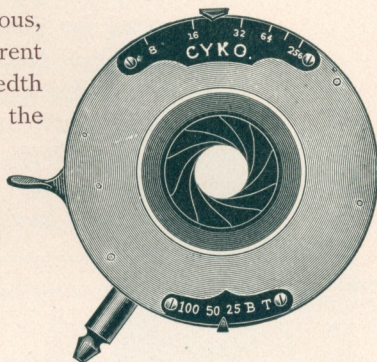
Specifications and Price of Shutter Only.

When fitted to Rochester Symmetrical Lenses	\$6.00
When fitted to Other Lenses.	8.00

BRANCH OF ROCHESTER OPTICAL & CAMERA CO.

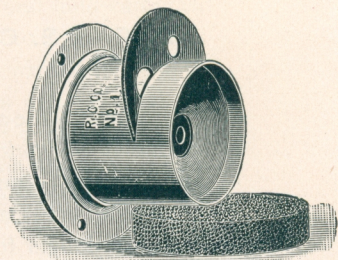
THE CYKO SHUTTER.

THIS shutter is a new invention and is made with the same precision as the strictly-high grade shutters, and will without doubt prove a great acquisition to our standard line of cameras. It has iris diaphragm, both finger and pneumatic release and dial indicating instantaneous, bulb, and time exposure, together with the different speeds from one-twentieth to one one-hundredth part of a second. The dials, indicating both the speed and diaphragms, are placed conveniently on the front of the shutter; the manipulation being very simple and at the same time unique. The release lever is at the side, as per the illustration. Made in 4 x 5 and 5 x 7 sizes only. These shutters are supplied with Poco Cameras only.



R. C. & S. CO.'S SINGLE ACHROMATIC LENS.

This single lens is as near perfect as it is possible to make, giving the best results for definition with great depth of focus and flatness of field, more especially when using smaller diaphragms. They are perfectly achromatic, and are as near rectilinear as is possible in a single combination lens, and are quick working. Surprising results are obtained with this single lens as to quality of work when fitted to our manufacture of cameras. For a low priced lens it has no comparison.



Size of Plate, 4	x	5,	Length of Focus, 6 inches,	Price	\$3.00	Specifications and Prices.		
"	"	4 ¹ / ₄	x 6 ¹ / ₂ ,	"	8		"	3.50
"	"	5	x 8,	"	10		"	4.00
"	"	6 ¹ / ₂	x 8 ¹ / ₂ ,	"	11		"	4.50
"	"	8	x 10,	"	13		"	5.50



ROCHESTER SYMMETRICAL LENS.



THIS lens was designed for portraits, groups, architecture, landscape, and instantaneous work. It is one of the best lenses ever constructed for general work, being perfectly rectilinear, free from distortion, and all objectionable features. It has a great depth of focus and perfectly flat field. It is fitted to all of our high-grade cameras, unless otherwise ordered. We invite comparison with any lens of its class now on the market.



Specifications and Prices.

4	x	5	size,	1	in. diam. lens,	6 1/4	in. equiv. focus,	5 3/4	in. back focus,	\$12.00
5	x	7	"	1 1/8	"	8	"	7 1/4	"	14.00
5	x	8	"	1 1/4	"	9	"	8 1/4	"	16.00
6 1/2	x	8 1/2	"	1 1/2	"	11	"	9 3/4	"	20.00
8	x	10	"	1 3/4	"	13	"	11 1/2	"	25.00
10	x	12	"	2	"	16	"	14 1/4	"	45.00
11	x	14	"	2 1/4	"	18 1/2	"	16 1/2	"	55.00
14	x	17	"	2 3/4	"	22	"	19 1/2	"	65.00
17	x	20	"	3 1/4	"	26	"	23	"	75.00

R. C. & S. CO.'S WIDE-ANGLE SYMMETRICAL LENS.

These wide-angle lenses will be found as valuable for the character of work for which they are designed as our well known and popular symmetrical series. They are adapted for interiors, buildings, landscapes, and all work in confined situations where lenses of longer focus cannot well be used. They have an angle of from 80 to 90 degrees. They are fitted to all of our high-grade cameras when wide-angle lenses are ordered, unless otherwise specified.

Specifications and Prices.

No. 1,	4	x	5	size,	3 1/2	inch focus,	Price.	\$10.00
No. 2,	5	x	8	"	5	"	"	12.00
No. 3,	6 1/2	x	8 1/2	"	6 1/2	"	"	15.00
No. 4,	8	x	10	"	8	"	"	20.00

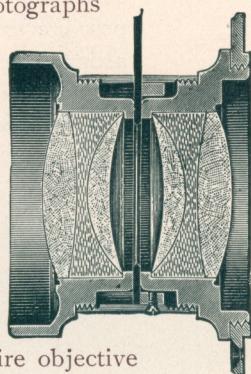
BRANCH OF ROCHESTER OPTICAL & CAMERA CO.

GOERZ'S DOUBLE ANASTIGMAT F:7-7.

Series III.



HIS is a Universal Extra-Rapid Lens suitable for portraits, groups, instantaneous photography, landscapes, architecture, interiors, and enlargements. The lenses of this series are **universal** in character in the full sense of the word. At full aperture they admit of instantaneous photographs embracing an angle of seventy degrees being taken, even on dull days. By the use of small stops the photograph may be made to include an angle of ninety degrees. The Double Anastigmats of Series III satisfy, therefore, the highest requirements, and are eminently adapted for all general purposes, in and out of doors. As the image is perfectly sharp, even with large apertures, the definition, brilliancy, and depth of every point of the field is absolutely uniform. Hence perfectly sharp wide-angle instantaneous photographs may be taken. The back lens, the focus of which is about the double of that of the entire objective may, by itself, be used as a landscape lens.



These lenses are particularly adapted for hand and field cameras, and are well adapted for our long draw or Tele Photo instruments, as both combinations can be used for general work, while one combination alone together with the long draw bellows can be used on distant objects. The size of plate indicated F:7-7 represents the area which is sharply covered up to the edge. This lens is also par-excellence with both combinations and the extreme long draw of our Tele Photo instrument in portrait work.

No.	Equivalent Focus. In.	Free Aperture. In.	Size of Plate Sharply Covered at			Price, with Iris Diaphragm.	
			F:7-7. In.	F:15-5. In.	F:62. In.		
No. 0.	4¾	⅝	3¼ x 4¼	4 x 5	4¾ x 6½	\$37.50	Specifications and Prices.
No. 1.	6	⅞	4 x 5	4¾ x 6½	5 x 8	45.00	
No. 2.	7	I	4¾ x 6½	5 x 8	7 x 9	51.50	
No. 3.	8¼	I ¼	5 x 8	6½ x 8½	8 x 10	62.50	
No. 4.	9½	I ⅓	6½ x 8½	7 x 9	10 x 12	75.50	
No. 6.	12	I ⅝	8 x 10	10 x 12	16 x 18	107.00	

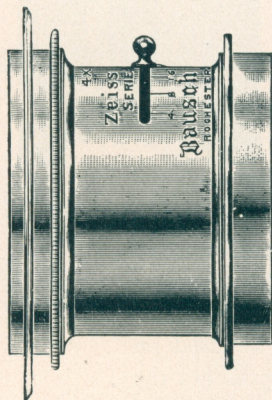


BAUSCH & LOMB-ZEISS ANASTIGMAT, f:8.

Series IIa.



THIS lens is adapted for portraits, groups, instantaneous out-door work and copying. The lenses of this series are composed of five lenses and have an angle of eighty degrees. Being of relatively slower speed, it has been possible to compute them for an absolutely flat image, free from all astigmatism, and for extremely sharp definition. It is the most desirable out-door lens made. The speed will be found ample for all ordinary instantaneous exposures, giving an unusual evenness of illumination, flatness, and depth. In the studio they are well adapted for large heads, figures, and groups. These lenses are also particularly adapted to copying and half-tone work, giving the minutest detail with extreme flatness to the edges.



These lenses fitted to any of our Folding or Cycle Poco cameras would make an ideal outfit. They are supplied with our improved iris diaphragm. Water-house stops in place of iris at same price.

NOTE—As it becomes practically impossible to regularly produce pieces of optical glass which are free from isolated small air bubbles, we must point out that the existence of such small air bubbles, even in the most unfavorable case, hardly reaches a loss of light amounting to one-fiftieth per cent, and therefore is entirely without influence on the optical result of a lens system.—*Schott & Gen, Manufacturers of Photographic Objective Glass, Germany.*

Specifications and Prices.	No.	Size of Plate covered with Stop f-8.	Diagonal of Largest Plate covered with Small Stop f-8.	Free Diameter of Largest Lens.	Equivalent Focus.	Brass Mounting.
						Price.
	1	4 x 5 in.	6 5/8 in.	5 3/8 in.	4 3/8 in.	\$ 30.00
	2	4 1/4 x 6 1/2 "	8 1/4 "	3/4 "	5 3/8 "	33.50
	3	5 x 8 "	10 1/8 "	1 "	6 1/2 "	44.00
	4	6 1/2 x 8 1/2 "	12 3/8 "	1 1/8 "	8 "	54.50
	5	8 x 10 "	14 3/4 "	1 7/8 "	9 5/8 "	64.50

No. 2 should be used for 4 x 5 size when shutters are to be fitted.

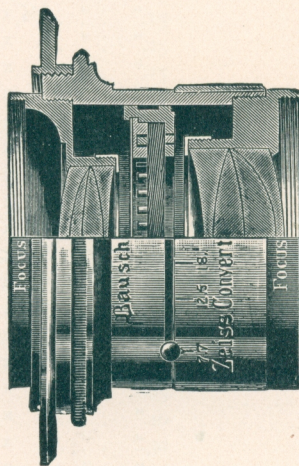
BRANCH OF ROCHESTER OPTICAL & CAMERA CO.

BAUSCH & LOMB-ZEISS CONVERTIBLE ANASTIGMAT LENS—Series VIIa.

THE Convertible Anastigmats are doublet lenses. They contain eight elementary lenses arranged in pairs, two pairs in each system. Such a lens is convertible into three lenses of different foci and angle where the two single anastigmats are of different foci, or into two where they are of the same foci. The speed, when composed of two single anastigmats of the same foci, is f:6-3. When the single anastigmats are of different foci, the speed is f:7 or f:7-7, according to the relative foci employed. The anastigmat flatness of the field is of the highest degree of perfection, the plates being covered sharply to the edges. The full angle of the image circle is eighty degrees, and astigmatism is entirely eliminated.

For hand cameras these lenses stand at the head of the list both in optical qualities and in their adaptability to the limited space allowed for the lens. In selecting the lens see that the back focus of no combination selected is longer than the greatest extension of which the bellows is capable.

Either the back or front combination can be used alone, as well as both combinations together, thereby giving three distinct foci; *i. e.*, Nos. 8 7 inches, 11 1/2 inches, and 14 inches, making it an ideal lens for long distance or general work. It is particularly adapted to our long-draw or Tele Photo cameras.



No.	Size of Plate covered with Full Aperture.	Focus of Front Lens.	Focus of Back Lens.	Combined Focus.	Speed.	Price.
3	4 x 5 in.	11 1/2 in.	7 1/4 in.	5 in.	F:7-7	\$ 59.50
5	4 1/4 x 6 1/2 "	11 1/2 "	9 "	5 3/4 "	F-7	63.00
8	5 x 7 1/2 "	14 "	11 1/2 "	7 "	F-7	75.00
9	5 x 8 1/2 "	16 1/2 "	11 1/2 "	7 1/2 "	F:7-7	87.50
11	6 1/2 x 8 1/2 "	16 1/2 "	14 "	8 1/2 "	F-7	94.50
12	6 1/2 x 8 1/2 "	19 1/4 "	14 "	9 1/4 "	F-7-7	115.50
17	8 x 10 "	23 1/2 "	19 1/4 "	12 "	F-7	167.50

Specifications and Prices.

BRANCH OF ROCHESTER OPTICAL & CAMERA CO.

MISCELLANEOUS SUPPLIES.—Continued.

			PRICE
Ground-glass	Frames, 4	x 5,50
"	"	5 x 7,60
"	"	5 x 8,75
"	"	6½ x 8½,	1.00
"	"	8 x 10,	1.25

Our Chemicals are guaranteed Pure, and of full weight and measurement.

**Photographic
Chemicals.**

Acetate of Soda, two-ounce bottle, each,	\$.20
Acetate of Lead, per ounce,15
Alum, Chrome, per pound,35
Alum, Powdered, per pound,15
Borax, per half pound, 15c; per pound,25
Bromide of Ammonium, per ounce,15
Bromide of Potassium, per ounce,15
Carbonate of Potash, per pound,25
Carbonate of Soda, per pound,15
Chloride of Gold, Pure, fifteen-grain bottle, each,60
Chloride of Lime, per ounce, five cents; per pound,25
Citric Acid, per ounce,15
Eikonogen, per ounce,40
Ferri-cyanide of Potassium, per ounce,15
Ferro-cyanide, of Potassium, per ounce,20
Glycerine, two-ounce bottle, each20
Hydrochinon, per ounce,40
Hypo-sulphite of Soda, one-pound box, each,10
Hypo-sulphite of Soda, five-pound box, each,40
Iron, Proto-sulphate, per pound,10
Litmus Paper, Red or Blue, per sheet,05
Magnesium Powder, Pure, per ounce,40
Meta Bi-sulphite of Potash, per ounce,30
Oxalate of Potash, Neutral, per pound,30
Oxalic Acid, per ounce,15
Phosphate of Soda, per ounce,10
Pyrogallie Acid, per ounce,40
Sulphite of Soda, Crystals, per pound,25
Sulphite of Soda, Granular, per pound,30
Sulpho-cyanide of, Ammonia, per ounce,20
Tungstate of Soda, per ounce,15

BRANCH OF ROCHESTER OPTICAL & CAMERA CO.

TELEGRAPH CODE.—Continued.

Tele Photo Poco A, with Unicum Shutter and Lens,	-	-	-	-	-	-	-	-	4 x 5	Kangaroo
" " " A, " " " " " " " "	-	-	-	-	-	-	-	-	5 x 7	Kettle
" " " A, " " " " " " " "	-	-	-	-	-	-	-	-	6½x8½	Kidney
" " " A, " " " " " " " "	-	-	-	-	-	-	-	-	8 x 10	Kitchen
" " " A, " " Diaphragm " " " "	-	-	-	-	-	-	-	-	4 x 5	Kitten
" " " A, " " " " " " " "	-	-	-	-	-	-	-	-	5 x 7	Knee
" " " A, " " " " " " " "	-	-	-	-	-	-	-	-	6½x8½	Knapsack
" " " A, " " " " " " " "	-	-	-	-	-	-	-	-	8 x 10	Koran
" " " A, no Lens or Shutter,	-	-	-	-	-	-	-	-	4 x 5	Knuckle
" " " A, " " " " " " " "	-	-	-	-	-	-	-	-	5 x 7	Knight
" " " A, " " " " " " " "	-	-	-	-	-	-	-	-	6½x8½	Knave
" " " A, " " " " " " " "	-	-	-	-	-	-	-	-	8 x 10	Kyanite
Tele Photo Cycle Poco B, with Unicum Shutter and Lens,	-	-	-	-	-	-	-	-	4 x 5	Ladder
" " " B, " " " " " " " "	-	-	-	-	-	-	-	-	5 x 7	Laurel
" " " B, " " " " " " " "	-	-	-	-	-	-	-	-	6½x8½	Lackey
" " " B, " " " " " " " "	-	-	-	-	-	-	-	-	8 x 10	Legacy
" " " B, " " Diaphragm Shutter and Series VIIa Zeiss Lens,	-	-	-	-	-	-	-	-	4 x 5	Leopard
" " " B, " " " " " " " "	-	-	-	-	-	-	-	-	5 x 7	Levee
" " " B, " " " " " " " "	-	-	-	-	-	-	-	-	6½x8½	Library
" " " B, " " " " " " " "	-	-	-	-	-	-	-	-	8 x 10	Liniment
" " " B, " " " " " " " "	-	-	-	-	-	-	-	-	4 x 5	Liquid
" " " B, " " " " " " " "	-	-	-	-	-	-	-	-	5 x 7	Lobster
" " " B, " " " " " " " "	-	-	-	-	-	-	-	-	6½x8½	Locket
" " " B, " " " " " " " "	-	-	-	-	-	-	-	-	8 x 10	Lounge
" " " B, no Lens or Shutter,	-	-	-	-	-	-	-	-	4 x 5	Lozenge
" " " B, " " " " " " " "	-	-	-	-	-	-	-	-	5 x 7	Lunatic
" " " B, " " " " " " " "	-	-	-	-	-	-	-	-	6½x8½	Lunch
" " " B, " " " " " " " "	-	-	-	-	-	-	-	-	8 x 10	Lyceum
" " " C, with Unicum Shutter and Lens,	-	-	-	-	-	-	-	-	4 x 5	Mackerel
" " " C, " " " " " " " "	-	-	-	-	-	-	-	-	5 x 7	Maiden
" " " C, " " " " " " " "	-	-	-	-	-	-	-	-	6½x8½	Master
" " " C, " " " " " " " "	-	-	-	-	-	-	-	-	8 x 10	Mechanic
" " " C, with Diaphragm Shutter and Series VIIa Zeiss Lens,	-	-	-	-	-	-	-	-	4 x 5	Meadow
" " " C, " " " " " " " "	-	-	-	-	-	-	-	-	5 x 7	Melon
" " " C, " " " " " " " "	-	-	-	-	-	-	-	-	6½x8½	Mineral
" " " C, " " " " " " " "	-	-	-	-	-	-	-	-	8 x 10	Mistress
" " " C, " " " " " " " "	-	-	-	-	-	-	-	-	4 x 5	Minister
" " " C, " " " " " " " "	-	-	-	-	-	-	-	-	5 x 7	Monkey
" " " C, " " " " " " " "	-	-	-	-	-	-	-	-	6½x8½	Mortgage
" " " C, " " " " " " " "	-	-	-	-	-	-	-	-	8 x 10	Monster
" " " C, no Lens or Shutter,	-	-	-	-	-	-	-	-	4 x 5	Monarch
" " " C, " " " " " " " "	-	-	-	-	-	-	-	-	5 x 7	Mulatto
" " " C, " " " " " " " "	-	-	-	-	-	-	-	-	6½x8½	Muslin
" " " C, " " " " " " " "	-	-	-	-	-	-	-	-	8 x 10	Mustache
" " " D, with Unicum Shutter and Lens,	-	-	-	-	-	-	-	-	4 x 5	Napkin
" " " D, " " " " " " " "	-	-	-	-	-	-	-	-	5 x 7	Navy
" " " D, " " " " " " " "	-	-	-	-	-	-	-	-	6½x8½	Nabob
" " " D, " " " " " " " "	-	-	-	-	-	-	-	-	8 x 10	Nation
" " " D, with Diaphragm Shutter and Series VIIa Zeiss Lens,	-	-	-	-	-	-	-	-	4 x 5	Necklace

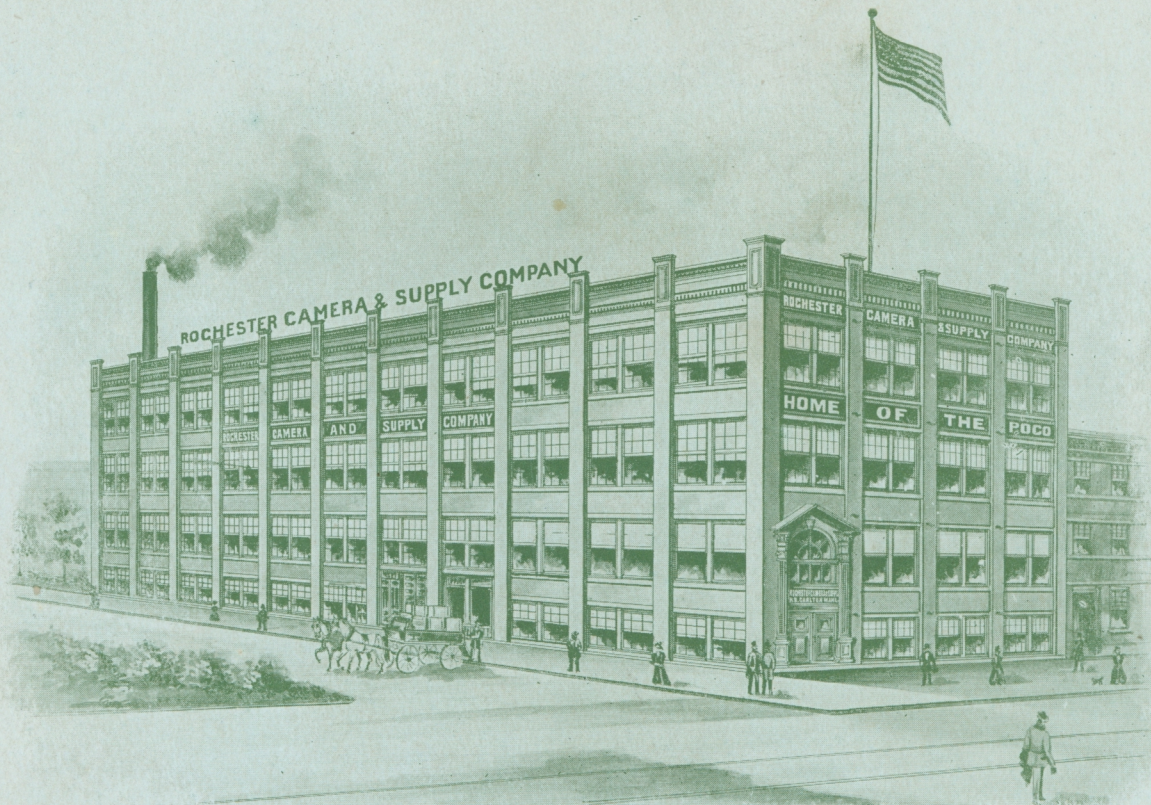


ROCHESTER CAMERA & SUPPLY CO.



TELEGRAPH CODE.—Continued.

<i>Nephew</i>	Tele Photo Cycle Poco D, with Diaphragm Shutter and Series VIIa Zeiss Lens,	-	5 x 7
<i>Neighbor</i>	" " " " D, " " " " " " " " " " " "	-	6½x8½
<i>Newsboy</i>	" " " " D, " " " " " " " " " " " "	-	8 x 10
<i>Nigger</i>	" " " " D, " " " " " " " " " " " "	-	4 x 5
<i>Nightcap</i>	" " " " D, " " " " " " " " " " " "	-	5 x 7
<i>Ninny</i>	" " " " D, " " " " " " " " " " " "	-	6½x8½
<i>Ninrod</i>	" " " " D, " " " " " " " " " " " "	-	8 x 10
<i>Novel</i>	" " " " D, no Lens or Shutter, -	-	4 x 5
<i>Nostril</i>	" " " " D, " " " " " " " " " " " "	-	5 x 7
<i>Notice</i>	" " " " D, " " " " " " " " " " " "	-	6½x8½
<i>Nutmeg</i>	" " " " D, " " " " " " " " " " " "	-	8 x 10
<i>Oakum</i>	Tele Photo Cycle Poco B, Special, with Diaphragm Shutter and Series VIIa Zeiss Lens,	-	4 x 5
<i>Obelisk</i>	" " " " B, " " " " " " " " " " " "	-	5 x 7
<i>Ocean</i>	" " " " B, " " " " " " " " " " " "	-	6½x8½
<i>Office</i>	" " " " B, " " " " " " " " " " " "	-	8 x 10
<i>Ointment</i>	" " " " B, " " " " " " " " " " " "	-	4 x 5
<i>Omnibus</i>	" " " " B, " " " " " " " " " " " "	-	5 x 7
<i>Onion</i>	" " " " B, " " " " " " " " " " " "	-	6½x8½
<i>Onyx</i>	" " " " B, " " " " " " " " " " " "	-	8 x 10
<i>Organ</i>	" " " " B, no Lens or Shutter, -	-	4 x 5
<i>Orange</i>	" " " " B, " " " " " " " " " " " "	-	5 x 7
<i>Orchestra</i>	" " " " B, " " " " " " " " " " " "	-	6½x8½
<i>Oyster</i>	" " " " B, " " " " " " " " " " " "	-	8 x 10
<i>Pantry</i>	" " " " C, with Diaphragm Shutter and Series VIIa Zeiss Lens,	-	4 x 5
<i>Padlock</i>	" " " " C, " " " " " " " " " " " "	-	5 x 7
<i>Palmetto</i>	" " " " C, " " " " " " " " " " " "	-	6½x8½
<i>Pasture</i>	" " " " C, " " " " " " " " " " " "	-	8 x 10
<i>Pedestal</i>	" " " " C, " " " " " " " " " " " "	-	4 x 5
<i>Peasant</i>	" " " " C, " " " " " " " " " " " "	-	5 x 7
<i>Perfume</i>	" " " " C, " " " " " " " " " " " "	-	6½x8½
<i>Pewter</i>	" " " " C, " " " " " " " " " " " "	-	8 x 10
<i>Pistol</i>	" " " " C, no Lens or Shutter, -	-	4 x 5
<i>Pigeon</i>	" " " " C, " " " " " " " " " " " "	-	5 x 7
<i>Police</i>	" " " " C, " " " " " " " " " " " "	-	6½x8½
<i>Powder</i>	" " " " C, " " " " " " " " " " " "	-	8 x 10
<i>Queen</i>	Stereo Poco, with Lens and Shutter, -	-	5 x 7
<i>Quail</i>	" " no Lens or Shutter, -	-	5 x 7
<i>Radish</i>	King Camera, -	-	5 x 7
<i>Republic</i>	" " " " " " " " " " " " " " " "	-	5 x 8
<i>Ribbon</i>	" " " " " " " " " " " " " " " "	-	6½x8½
<i>Rogue</i>	" " " " " " " " " " " " " " " "	-	8 x 10
<i>Russian</i>	" " " " " " " " " " " " " " " "	-	11 x 14
<i>Saint</i>	Rochester View Camera, -	-	5 x 7
<i>Schooner</i>	" " " " " " " " " " " " " " " "	-	5 x 8
<i>Senate</i>	" " " " " " " " " " " " " " " "	-	6½x8½
<i>Shovel</i>	" " " " " " " " " " " " " " " "	-	8 x 10
<i>Skeleton</i>	" " " " " " " " " " " " " " " "	-	10 x 12
<i>Smoke</i>	" " " " " " " " " " " " " " " "	-	11 x 14
<i>Spider</i>	" " " " " " " " " " " " " " " "	-	14 x 17



FOR SALE BY
IVER JOHNSON SPORTING GOODS CO.,
Successors to John P. Lovell Arms Co.,
163-165 Washington St.,
BOSTON, MASS.