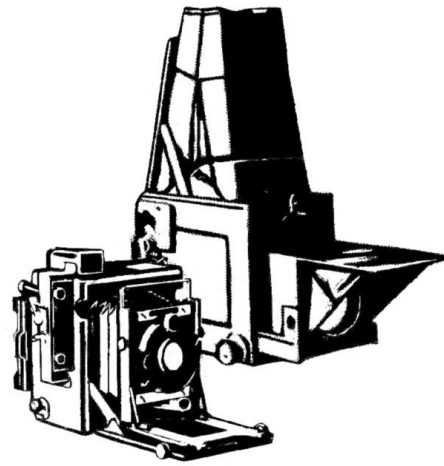


GRAFLEX HISTORIC QUARTERLY

Since 1996



VOLUME 14 ISSUE 3

THIRD QUARTER 2009

FEATURES

No. 5, No. 6 and No. 16 Cirkut Cameras by Bill McBride.....1
 The 3 1/4 x 4 1/4 Speed Graphic of 1935-1939 by Ken Metcalf.....5
 GRAFACTS....Graflex Slave/Sync and Graflex Booster/Analyzer
 by Bill Inman.....7
 Speed Graphic article, xl advertisement.....Insert

No. 5, No. 6 and No. 16 Cirkut Cameras

By Bill McBride

Part 1



Figure 1. No. 5 Cirkut Camera made by the Folmer & Schwing Division of Eastman Kodak.

This article (previously published in *The Photographer*) covers the Nos. 5, 6 and 16 Cirkut Cameras. Future articles will cover the No. 10 Cirkut Camera and the No. 6 and No. 8 Cirkut Outfits.

The No. 5 Cirkut Camera (Figure 1) was first offered in 1915 and was available until 1923. It was the smallest and most compact Cirkut manufactured. William F. Folmer of the Folmer & Schwing Division, Eastman Kodak Co., applied for a patent in 1915 and received it (number 1,251,494) on January

1, 1918. The No. 5 Cirkut patent has the best detailed drawings of any Cirkut camera, and sheets from this patent are included as Figure 2. It was manufactured by the Folmer & Schwing Division of the Eastman Kodak Co.

The No. 5 Cirkut was provided with a triple-convertible Gundlach Manhattan Optical Rapid Rectigraphic lens with 6¼", 11" and 14" focal lengths. A rising and falling front is furnished to balance the negative for the required sky and foreground. The body of the camera is constructed of selected mahogany, with all exposed wood parts ebonized to harmonize with the rich gun-metal finish of the exposed metalwork, and the camera body is covered with the finest grade of Morocco leather.

An internal spring motor, which revolves the camera on the tripod head and winds the film, is controlled by an internal variable-speed governor. Exposure speeds that range from 1/2 to 1/12 of a second are regulated by a dial and pointer, and a release lever that starts and stops the exposure (Figure 3). Also shown in Figure 3,

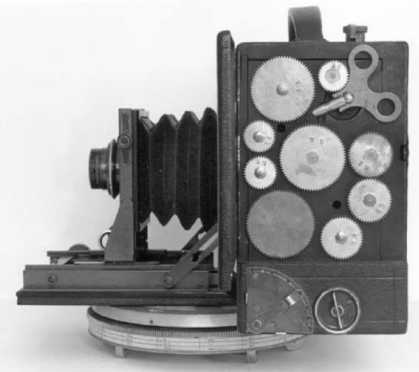


Figure 3. The No. 5 Cirkut Camera open, showing gear storage compartment, governor speed control dial, and

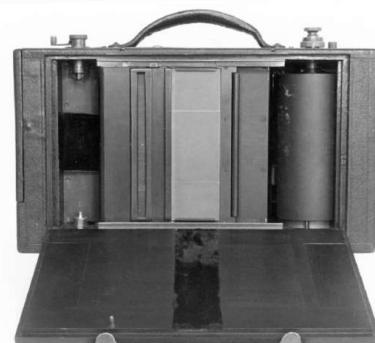


Figure 4. The No. 5 Cirkut with the back open, with the ground glass in position to focus.

are the nine pinion gear wheels, stored along with the winding key, in a "pocket" on the right side of the camera. An indicator on the body top shows, in inches, how much film has been used during an exposure. The back panel is provided with a perforating button to mark the film when