

There is no better way of recording one's experiences for always!



Voigtlander

SINGLE-LENS REFLEX CAMERAS

because the lens is so good



The history of photography – from its earliest beginnings right up to present-day achievements – is inseparably linked with the name VOIGTLÄNDER. More than one hundred years ago, in 1840, Voigtländer, which was already founded in 1756, constructed the first mathematically computed photographic lens in the world . . . and at the same time also produced the first all-metal camera. Since that time an incalculable flow of Voigtländer products has come from the production plant in Braunschweig.

In each camera and in every lens is invested the experience of the world's oldest precision instrument- and optical-works. Every Voigtländer product is guaranteed that workmanship and quality which have been characteristic of this company since its birth, and still are so today. Voigtländer cameras and lenses are produced in a manner in keeping with the most recent scientific and technical developments, and with a precision and excellence which are famous, for the benefit of photographers around the globe.



This single-lens reflex camera has proved itself brilliantly in the hands of innumerable photo-enthusiasts in every part of the world. Modern in design and versatile in use, it is a Voigtlander precision camera which will fulfil the most ambitious demands. Some of the features which distinguish the BESSAMATIC particularly, and which will be of particular interest to you, are the semi-automatic aperture control provided by the built-in exposure meter (selenium cell), which simplifies all your exposure problems; the bright clear-glass

BESSAMATIC 24 x 36 mm



viewfinder-rangefinder into which all important exposure data are reflected; the reliable "Synchro-Compur" diaphragm shutter, and the interchangeable lenses of varying speeds and focal lengths — from 35 mm wide-angle to the 350 mm super-telephoto. The comprehensiveness of this equipment and the unique selection of lenses that go with it, together with a wide range of special accessories, open up to the BESSAMATIC an almost unlimited selection of photographic possibilities, whatever your interests may be.

BESSAMATIC m 24 x 36 mm



The advantages of the single-lens reflex over other camera types are indisputable. The professional has appreciated these assets in his work for a long time past, and today more and more of the ambitious amateurs are also choosing this type of camera because they know that it offers them the greatest scope and freedom in truly creative work. The credit for this does not go solely to the interchangeability of lenses, providing a selection of various focal lengths and speeds, but to a large extent also to the parallax-free through-the-lens viewing image.



Being fully aware of this, Voigtländer have developed a second BESSAMATIC, the model "m". This is a single-lens reflex with the same basic characteristics as those of its famous "sister" — but it is not equipped with a built-in exposure meter, and is therefore more moderately priced. It is primarily intended for the more experienced photographer, who is prepared to forego a certain amount of operational convenience . . . and it also forms an ideal "second camera", for the use of alternative film types.



ULTRAMATIC CS 24 x 36 mm



This is the Voigtlander "star" model. As with the other models, this camera will of course also take all the interchangeable lenses right up to the super-telephoto 350 mm, and including the Voigtlander-Zoomar f. 2.8/36-82 mm zoom lens. The ULTRAMATIC CS leaves no wishes unfulfilled from the wide angle view to the extreme tele shot, from the formal

portrait to the flashed news picture, from the close-up or copy to the recording of microscopic samples. The perfect functional design and the high technical standard assure this camera of great demand and popularity among professionals in all the various spheres of photography and more ambitious amateurs alike.

4	5.6	8
125		



Here is a view into the clear-glass viewfinder-rangefinder of the BESSAMATIC. A bright and natural image, in its true colours, is to be seen (through a Fresnel screen). The image is right way up, laterally correct, free from parallax and of the exact format in which it will appear on the film. Exact focusing with any of the interchangeable lenses is a simple operation with the twin focusing system (split-image rangefinder and fine-screen focusing ring). A small adjustment brings the exposure meter matching needle into the correct position, thus automatically setting the right aperture for the chosen shutter speed. And the whole time all the relevant exposure data are clearly reflected into the upper part of the viewfinder. Thus, adjustments to all vital settings can be controlled while viewing.



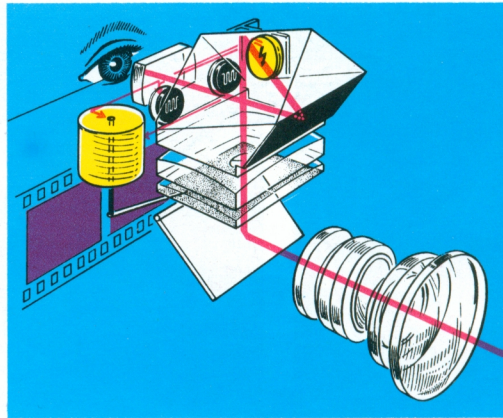
The groundglass focusing screen in the BESSAMATIC m, by means of which each of the interchangeable lenses is rapidly focused, shows the subject not only right way up and free from parallax, but also laterally the correct way round. This is achieved through the built-in pentaprism. A special biconvex condenser lens assures a groundglass screen image which is evenly illuminated to the edges, as well as being of good contrast and true in its colours.

The lens aperture has to be estimated — with a little experience this can be done quite accurately. But if you want to be quite sure, then we would recommend the small clip-on Voigtländer exposure meter which represents one of the accessories for this camera model.

A
500



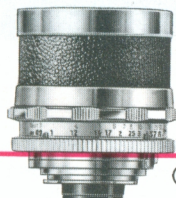
The viewfinder of the ULTRAMATIC CS also consists of a bright and evenly illuminated ground glass focusing screen which incorporates a diagonal split-image rangefinder. To the left of the automatic aperture indicator of the Cds meter is visible. The two red areas serve as a warning signal when lighting conditions are not sufficiently good. The green area in the middle serves to test the battery, which provides the current for the two cadmium sulphide photoresistors of the exposure meter. At the top of the viewfinder the relevant exposure data are clearly visible: "A" indicates automatic aperture setting – when the aperture is set manually the appropriate stop number is indicated in this space. Below this the shutter speed can be seen.



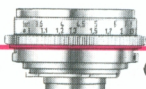
All Voigtländer single-lens reflex cameras are equipped with the "Synchro-Compur" diaphragm shutter, which has proved itself millions of times over, and which yields exposure times from 1 to 1/500th second with clockwork precision as well as providing a "B" setting (for time exposures of any desired duration). The shutter has a built-in delayed action mechanism, and it is synchronized for flash right down to the fastest shutter speed. Further general technical details: rapid film advance, automatic double exposure prevention device, film type indicator, clearly visible frame counter (in the ULTRAMATIC CS for both 36 and 20 exposure films) and sturdy all-metal housing with hinged back.



①



②



③



④



⑤



⑥

The selection of optical equipment for the Voigtlander single-lens reflex cameras, consisting of ten fully interchangeable lenses, is unique. With a choice of focal lengths ranging from 35 mm wide-angle to 350 mm super-tele, you are able to face successfully virtually any photographic situation. Each of the lenses is a high-quality Voigtlander anastigmat in the fullest possible sense. They all guarantee the utmost in image sharp-

ness and brilliance, as well as an absolutely true and pure colour rendering. And, of course, each lens is fully coated and equipped for automatic diaphragm control, as well as having an automatic depth of field indicator (the latter with the exception of standard lens Color-Lanthar f 2.8/50 mm and vary-focal lens Voigtlander-Zoomar f 2.8/36-82 mm lenses).



⑦



⑧



⑨

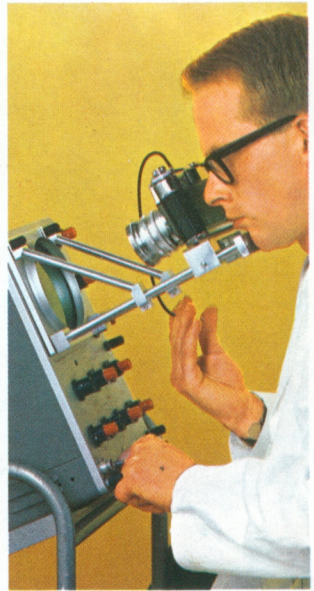


⑩

① SKOPAREX f 3.4/35 mm wide-angle lens of six elements and with 63° angle of view. ② Special SKOPAGON f 2/40 mm lens of nine elements and with 58° angle of view. ③ COLOR-LANTHAR f 2.8/50 mm standard lens of three components and with 48° angle of view. ④ COLOR-SKOPAR f 2.8/50 mm standard lens of four elements and with 48° angle of view. ⑤ SEPTON f 2/50 mm standard lens of seven elements and with 48° angle of view.

⑥ VOIGTLÄNDER-ZOOMAR f 2.8/36–82 mm zoom lens of fourteen elements and with an angle of view from 62° to 30°. ⑦ DYNAREX f 3.4/90 mm tele-lens of five elements and with 28° angle of view. ⑧ SUPER-DYNAREX f 4/135 mm telephoto lens of four elements and with 19° angle of view. ⑨ SUPER-DYNAREX f 4/200 mm telephoto lens of five elements and with 12,5° angle of view. ⑩ SUPER-DYNAREX f 5.6/350 mm telephoto lens of seven elements and with 7° angle of view.





This equipment has been listed carefully here in order to show clearly what a comprehensive camera outfit consists of. The list should make it quite clear that all Voigtlander single-lens reflex cameras constitute a comprehensive "camera system" — a system which is not only sufficient for private picture taking, but also invaluable for professional purposes. It can cope with everything from close-ups of small objects, both animate and inanimate, to the reproduction of pages from books, of postage stamps or of miniatures. It can be used for the recording of cathode ray oscillograms as readily as for the photography of microscopic specimens.



List of Equipment

BESSAMATIC m with Color-Lanthar f 2.8/50 mm
with Color-Skopar f 2.8/50 mm
with Septon f 2/50 mm
body only

BESSAMATIC with Color-Lanthar f 2.8/50 mm
with Color-Skopar f 2.8/50 mm
with Septon f 2/50 mm
body only

ULTRAMATIC CS with Color-Lanthar f 2.8/50 mm
with Color-Skopar f 2.8/50 mm
with Septon f 2/50 mm
body only

Interchangeable lenses

Skoparex f 3.4/35 mm

Skopagon f 2/40 mm

Color-Lanthar f 2.8/50 mm

Color-Skopar f 2.8/50 mm

Septon f 2/50 mm

Voigtländer-Zoomar f 2.8/36–82 mm

Dynarex f 3.4/90 mm

Super-Dynarex f 4/135 mm

Super-Dynarex f 4/200 mm

Super-Dynarex f 5.6/350 mm