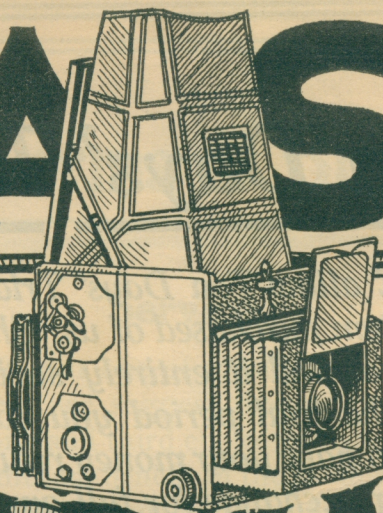


BASS



BARGAIN LIST

CHOCK FULL OF REAL CAMERA BARGAINS

**BASS
CAMERA
COMPANY ~
109 N. DEARBORN ST.
CHICAGO, ILL.**

ISSUED
OCTOBER 1921

Ten Days' Trial

WE allow Ten Days' Trial on any item purchased of us. Should you not find it entirely satisfactory within the trial period you can return same and have your money refunded you in full or exchange for full amount paid on any other camera or merchandise.

BASS CAMERA COMPANY

Charles Bass
President

.....
*The prices contained herein supersede
all previous lists and render them void.*
.....

List 26

Issued October 1921

Bass Terms of Business

Service

HAVING but one of most of the items listed herein, we suggest that when ordering, a second and third choice be listed. This will result in our mutual benefit in the saving of time and trouble. Should any particular outfit listed appeal to you and you are not immediately ready to purchase same, a 25% deposit will hold it for you 30 or 60 days. This same method is suggested when you offer your merchandise in trade on a listed outfit, that is, to safeguard yourself against the time consumed in the shipment of your goods to us.

Order on enclosed order blank and describe in detail, number and outfit or accessories requested. A quantity of order blanks will be forwarded you on request.

Surety

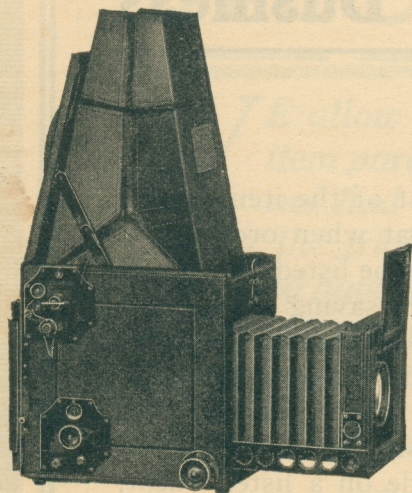
Our Guarantee as printed on preceding page is absolute protection against your purchasing an outfit that does not meet with your entire approval. The Bass Guarantee has stood the test of time.

Terms

Cash with order or 25% with order, balance C. O. D. Cash with order is preferable, inasmuch as it saves you three to four days delay from the carrier's red tape. Prices listed herein are net. No C. O. D. shipments outside of Continental United States.

ALWAYS!

GRAFLEX Headquarters of America



ABSOLUTE SATISFACTION GUARANTEED !

A Bass Used Camera is New Mechanically. Years of Satisfactory Service is our best Guarantee.

26101—2¼x3¼ Graflex Jr., F:4.5 Velostigmat, film adapter, holder.....	\$65.00
26102—2¼x3¼ Graflex Jr., Cooke F:4.5, film adapter, holder	\$76.00
26103—2¼x3¼ Graflex Jr., Tessar F:4.5, film adapter, holder	\$74.00
26104—2¼x3¼ Graflex Jr., Zeiss Kodak Anastigmat F:6.3, film adapter, holder.....	\$52.50
26105—2¼x3¼ R. B. Thornton Pickard Reflex, Cooke F:4.5, film adapter, holder.....	\$78.00
26106—2¼x3¼ R. B. Thornton Pickard Reflex, F:4.5 Velostigmat, film adapter, holder.....	\$57.50
26107—2¼x3¼ R. B. Graflex Jr., 6½" F:4.5 Ross Xpres, film adapter.....	\$120.00
26108—2¼x3¼ R. B. Graflex Jr., 6½" F:4.5 B. & L. Tessar, film adapter.....	\$115.00
26109—2¼x3¼ R. B. Graflex Jr., 6½" F:4.5 Velostigmat, film adapter.....	\$105.00
26110—1A Graflex, trestle hood, F:4.5 Velostigmat	\$67.50
26111—1A Autographic Graflex, trestle hood, Tessar F:4.5	\$77.00
26112—1A Graflex, trestle hood, Zeiss F:6.3 Anastigmat	\$52.50
26113—1A Autographic Graflex, latest model, Tessar F:4.5, like new	\$120.00

26114—1A Autographic Graflex, latest model, F:4.5 Velostigmat, like new	\$112.00
26117—3¼x4¼ Premograph Reflex.....	\$12.00
26118—3¼x4¼ Popular Pressman, Butcher F:4.5, film adapter, 3 holders	\$65.00
With Cooke F:4.5 lens.....	\$74.50

SPECIAL PAFF REFLEX

Takes 1½ x 2½ pictures, uses standard Premo film pack No. O. Fitted with Trioplan F:6.8 Anastigmat, fixed focus, with special guillotine type shutter, metal diaphragm stops. Outside dimensions of outfit are 2⅞ x 4¼ x 4 inches. Finely made and guaranteed to give perfect results.

Here is a genuine reflecting camera of fine quality at the special price of

\$17⁵⁰

Supply Limited—Order Now

GRAFLEX! BETTER PICTURES

26119— $3\frac{1}{4}\times 4\frac{1}{4}$ R. B. Ensign Popular Reflex, Velostigmat F:4.5, film adapter and 3 holders.....\$75.00

26120— $3\frac{1}{4}\times 4\frac{1}{4}$ Auto Graflex B. & L. Tessar F:4.5, film adapter, holder\$100.00

26121— $3\frac{1}{4}\times 4\frac{1}{4}$ Auto Graflex, F:4.5 Velostigmat, film adapter, holder\$92.50

26122— $3\frac{1}{4}\times 4\frac{1}{4}$ Auto Graflex, accordion hood, Zeiss F:6.3 Anastigmat, film adapter.....\$49.00

26123— $3\frac{1}{4}\times 4\frac{1}{4}$ R. B. Telescopic Graflex, genuine Carl Zeiss Tessar F:4.5, film adapter.....\$150.00

26124— $3\frac{1}{4}\times 4\frac{1}{4}$ R. B. Telescopic Graflex, Velostigmat F:4.5, roll holder\$134.00

26125— $3\frac{1}{4}\times 4\frac{1}{4}$ Ensign Popular Reflex, F:4.5 Orix Anastigmat, film pack adapter, 3 holders.....\$67.50

26126—4x5 Folding Mentor Reflex, Dagor F:6.8, film adapter, 3 holders.....\$92.50

26127— $3\frac{1}{4}\times 4\frac{1}{4}$ R. B. Ipsco Reflex, all adjustments, genuine Carl Zeiss Tessar F:4.5, film adapter, holders\$125.00

26128— $3\frac{1}{4}\times 4\frac{1}{4}$ R. B. Deutscho Reflex, all adjustments, swing front, etc., Helomar F:5.4, film adapter, holders\$75.00

26129— $3\frac{1}{4}\times 4\frac{1}{4}$ R. B. Mentor Reflex, rising front, etc., Ernemann F:5.4, film adapter, holders.....\$50.00

26130— $3\frac{1}{4}\times 4\frac{1}{4}$ Folding Ensign Reflex, genuine Carl Zeiss Tessar F:4.5, film adapter, 3 holders.....\$87.50

26130 $\frac{1}{2}$ — $3\frac{1}{4}\times 4\frac{1}{4}$ R. B. Bentzin Reflex, as fully described on page 7, with $6\frac{1}{2}$ " F:4.5 Carl Zeiss Tessar. Outfit fitted for Graflex accessories complete with Graflex roll holder and one plate holder. Special at\$150.00

26131—3A Ensign Popular Reflex, 7" F:4.5 Velostigmat, Graflex roll holder.....\$75.00

26132—3A Mentor Reflex F:4.5 Velostigmat, film pack adapter\$67.50

26133— $3\frac{1}{4}\times 4\frac{1}{4}$ R. B. Mentor Reflex F:5.7 Olor, sunk mount, film adapter.....\$52.50

26134— $3\frac{1}{4}\times 4\frac{1}{4}$ R. B. Ensign Popular Reflex, F:4.5 genuine Carl Zeiss Tessar, film adapter, 3 holders \$90.00

26135— $3\frac{1}{4}\times 4\frac{1}{4}$ R. B. Ensign Popular Reflex, F:6.3 Anastigmat lens, film adapter, 3 holders.....\$57.50

26136— $3\frac{1}{4}\times 4\frac{1}{4}$ R. B. Ensign Popular Reflex, F:8 Rectilinear lens, film adapter.....\$45.00

26137— $3\frac{1}{4}\times 4\frac{1}{4}$ R. B. Ensign Reflex, F:4.8 Goerz Celor, film adapter, 3 holders.....\$77.50

26138— $3\frac{1}{4}\times 4\frac{1}{4}$ R. B. Auto Graflex, like new, 18 cm. genuine Carl Zeiss Tessar F:4.5, plate magazine and holder\$187.00

26139— $3\frac{1}{4}\times 4\frac{1}{4}$ R. B. Auto Graflex, like new, $7\frac{1}{2}$ " F:4.5 Tessar, film adapter.....\$179.00

26140— $3\frac{1}{4}\times 4\frac{1}{4}$ R. B. Auto Graflex, like new, F:4.5 Velostigmat, film adapter.....\$170.00

26141— $3\frac{1}{4}\times 4\frac{1}{4}$ R. B. Auto Graflex, like new, F:4.8 Celor, film adapter\$165.00

26142—4x5 R. B. Auto Graflex, like new, B. & L. Tessar F:4.5, film adapter, plate holder.....\$180.00

26143—4x5 Auto Graflex, 7" F:4.8 Goerz Celor, film adapter\$102.50

26144—4x5 Auto Graflex, used, B. & L. Tessar F:4.5, film adapter, one plate holder.....\$109.00

26145—4x5 Auto Graflex 7" F:4.5 Velostigmat, Roll holder, carrying case.....\$115.00

26146—4x5 R. B. Telescopic Graflex, 1916 model, Tessar F:4.5, film adapter.....\$127.50

26147—4x5 R. B. Telescopic Graflex, 1916 model, F:4.5 Velostigmat, film adapter.....\$118.00

26148—4x5 R. B. Telescopic Graflex, like new, 18 cm. Carl Zeiss Tessar F:4.5.....\$165.00

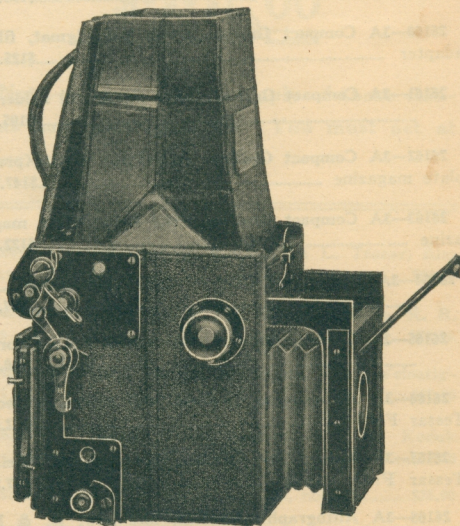
26149—4x5 R. B. Auto Graflex, long focus, 1916 model, 8" F:4.5 Velostigmat, film adapter.....\$140.00

26150—4x5 R. B. Auto Graflex, 1915 model, $9\frac{1}{8}$ " F:4.5 Velostigmat, plate magazine.....\$172.50

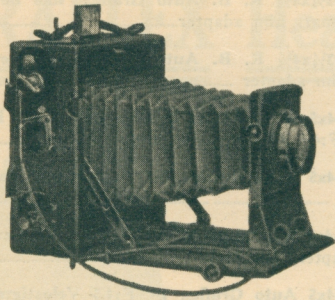
26151—4x5 R. B. Telescopic Graflex, old model, good condition, 7" F:4.8 Celor, film adapter.....\$114.00

26152—4x5 R. B. Auto Graflex, like new, $9\frac{1}{8}$ " in. Tessar, film adapter.....\$210.00

26153—4x5 R. B. Auto Graflex, old model, $9\frac{1}{8}$ " F:4.5 Velostigmat, plate magazine.....\$177.50



A REFLEX CAMERA



- 26154—4x5 R. B. Auto Graflex, long focus, old model, Plasmat F:4 convertible, single elements F:8. A wonderful value. With roll holder.....\$150.00
- 26154½—4x5 R. B. Newark Reflex, F:4.8 Goerz Celor, film adapter, 3 holders.....\$65.00
- 26155—4x5 R. B. Newark Reflex, F:4.5 Velostigmat, film adapter, 3 holders.....\$67.50
- 26155—4x5 R. B. Newark Reflex, F:4.5 Tessar, film adapter, 3 holders.....\$70.00
- 26156—4x5 R. B. Newark Reflex, F:6.3 Anastigmat, film adapter, 3 holders.....\$41.00
- 26157—4x5 R. B. Newark Reflex, 7" F:6 Voigtlander Dynar, film adapter, 3 holders.....\$55.00
- 26158—3A Compact Graflex, Carl Zeiss F:4.5, film adapter, carrying case.....\$155.00
- 26159—3A Compact Graflex, B. & L. Tessar F:4.5, roll holder\$135.00
- 26160—3A Compact Graflex, F:4.5 Velostigmat, film adapter\$125.00
- 26161—3A Compact Graflex, Zeiss F:6.3, roll holder\$105.00
- 26162—3A Compact Graflex, 7¼" F:4.5 Ross Xpres, plate magazine\$147.50
- 26163—3A Compact Graflex, F:4.8 Celor, plate magazine\$122.50
- 26164—3A Graflex, roll film, 7" F:4.5 Velostigmat.....\$97.50
- 26165—3A Graflex, roll film, 1914 model, F:4.8 Celor\$90.00
- 26166—3A Autographic Graflex, 1917 model, perfect, Tessar F:4.5\$122.50
- 26167—3A Autographic Graflex, like new, Carl Zeiss Tessar F:4.5\$147.50
- 26168—3A Autographic Graflex, like new, B. & L. Tessar F:4.5\$132.50

- 26169—3A Autographic Graflex, like new, 6½" B. & L. Tessar F:4.5\$124.00
- 26170—3A Graflex, F:6.3 Anastigmat.....\$77.50
- 26171—3A Autographic Graflex, Kodak Anastigmat F:4.5\$115.00
- 26172—3A Graflex, 7" F:6.3 Carl Zeiss Tessar.....\$98.00
- 26173—3A Graflex, 6½" F:4.5 Cooke.....\$107.00
- 26174—3A Graflex, 7" F:6 Voigtlander Dynar.....\$82.50
- 26175—4x5 Hall Mirror Reflex, F:8 R. R. lens, film pack adapter\$27.50
- 26176—4x5 Hall Mirror Reflex, 7" F:6 Voigtlander Dynar\$48.00
- 26177—4x5 Hall Mirror Reflex, F:4.5 Velostigmat, film adapter, 2 holders.....\$52.50
- 26178—4x5 Hall Mirror Reflex, F:6.3 Anastigmat, film adapter\$41.00
- 26179—10x15 cm. Folding Mentor Reflex, F:4.5 Carl Zeiss Tessar, 3 plate holders.....\$105.00
- 26180—4x5 Hall Mirror Reflex, 7" F:4.8 Celor, film adapter, 3 holders.....\$57.50
- 26181—5x7 Hall Mirror Reflex, F:8 R. R. lens, 3 double plate holders.....\$35.00
- 26182—5x7 Hall Mirror Reflex, 7" F:4.5 Velostigmat, 3 holders\$70.00
- 26183—5x7 Hall Mirror Reflex, 7½" F:4.5 B. & L. Tessar, 3 holders.....\$82.50
- 26184—5x7 Hall Mirror Reflex, 7" F:4.8 Celor, 3 holders\$57.00
- 26185—5x7 R. B. Home Portrait Graflex, 9½" B. & L. Tessar Ser. 1C F:4.5. Outfit complete with Graflex roll holder, at the net price of.....\$252.50
- 26186—5x7 R. B. Home Portrait Graflex, 9½" F:4.5 Velostigmat, Graflex roll holder.....\$225.00
- 26187—5x7 R. B. Special Home Portrait Graflex, long focus Ilex F:3.8 portrait lens, 13" focus, Graflex roll holder\$235.00
- 26188—5x7 R. B. Home Portrait Graflex, 10" F:4.5 Carl Zeiss Tessar, Graflex roll holder.....\$275.00
- 26189—5x7 Press Graflex, slightly used, perfect mechanically, no lens, 2 plate holders. List, \$197.00. Net\$130.00
- 26190—5x7 Press Graflex, slightly used, perfect mechanically, with 8¼" double convertible F:4 Plasmata, that world renowned high speed convertible anastigmat, 2 plate holders.....\$200.00
- 26191—5x7 Press Graflex, slightly used, perfect mechanically, with 9½" F:4.5 Velostigmat, 2 plate holders\$217.00

SAVES YOU FILM!

26192—5x7 Press Graflex, used but absolutely perfect, complete with Graflex magazine, plate holder, and fitted with 8½" F:6.3 Crown Anastigmat at the special net price of.....\$132.50

26193—5x7 Press Graflex, used but absolutely perfect, complete with Graflex magazine, plate holder, and fitted with 10" Demaria Sigmair Anastigmat F:6.8, a high grade French lens, convertible, at the net price of\$150.00

26194—5x7 Press Graflex, but slightly used, fitted with 8½" B. & L. Tessar Ser. 1C F:4.5, complete with 3 double plate holders, at the net price of.....\$185.00

26195—5x7 Press Graflex, 8" F:4.5 Cooke. Outfit very slightly used, in absolutely perfect mechanical condition, complete with 3 double plate holders.....\$185.00

26196—5x7 Press Graflex, with 6½x8½ 9/8" focus B. & L. Tessar, Ser. 1 F:4.5. Outfit very slightly used, in absolutely perfect mechanical condition. Complete with 3 double plate holders.....\$225.00

26197—3¼x4¼ Speed Graphic, just like new, fitted with 4¾" F4.8 Goerz Celor, complete with excellent sole leather carrying case, 3 double plate holders and film pack adapter. Special.....\$97.50

26198—3¼x4¼ Speed Graphic, just like new, fitted with B. & L. Tessar Ser. 1C F:4.5, complete with excellent sole leather carrying case, 3 double plate holders and film pack adapter.....\$110.00

26199—3¼x4¼ Speed Graphic, very slightly used, fitted for Graflex accessories, complete with Graflex plate magazine, fitted with 6½" F:4.5 B. & L. Tessar in compound, allowing slow automatic and time exposures without use of focalplane shutter. Outfit is complete with carrying case and focusing panel. Also 6" Spencer Portland F:4.5 soft focus lens in barrel with Iris diaphragm. A beautiful, complete outfit at the special net price of.....\$135.00

26200—3¼x4¼ Bentsin Focalplane camera, very compact, fitted with genuine Carl Zeiss Tessar F:4.5 in focusing mount, complete with focusing panel, 3 double plate holders, and fine plush lined carrying case—new—at the net price of.....\$140.00

26201—4x5 Speed Graphic, 6½" F:4.5 Ross Xpres, film adapter, 3 holders.....\$102.00

26202—4x5 Speed Graphic, 6" F:4.5 Velostigmat, film adapter, 3 holders.....\$94.00

26203—4x5 Speed Graphic, 6½" B. & L. Tessar F:4.5, film adapter, 3 holders.....\$99.50

26204—4x5 Speed Graphic "7 Voigtlander Dynar F:6, film adapter, 3 holders.....\$82.50

26205—3A Speed Graphic, 7" F:4.8 Celor, film adapter, 3 holders\$90.00

BENTZIN FOLDING REFLEX

At last a folding Reflex with the stability of a box type camera. The Bentsin Folding Reflex incorporates positively one of the very best Focalplane shutters, speeded from 1/10 to 1/1000 of a second. Shutter is of the special safety type, making it impossible to accidentally fog film, brilliant focusing hood, enabling the careful focusing necessary for the finest quality work. Camera is fitted with 18 cm. 7½" focus genuine Carl Zeiss Tessar F4.5 in new model focusing mount. Camera is covered with fine genuine seal leather, exquisitely finished. Metal parts black enameled in the finest possible manner. Folds up compactly. Dimensions when folded 4"x7"x8". Size of pictures 9x12 cm., or 3¼x4¼". Revolving back for either vertical or horizontal pictures, rising and falling front with rack and pinion adjustment and special screw lock nut. In fact, there is no feature lacking to this superb instrument. Charles Bass guarantees this outfit to be superior in workmanship and material to any camera of its type made. The outfit comes complete with plush lined fine leather carrying case, 3 finely made double plate holders, and film pack adapter. List price, \$300.00 new. Special price, complete,

\$225⁰⁰

Note.—Only a limited supply of these cameras has been imported. You must act at once to get yours.

26206—3A Speed Graphic, F:4.5 B. & L. Tessar, film adapter, 3 holders\$98.00

26207—1A Speed Kodak, roll film, focalplane, R. R. lens\$27.50

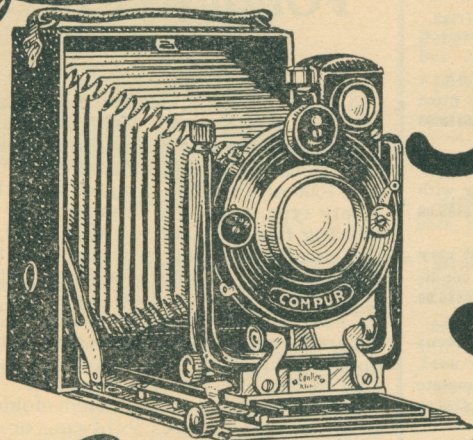
26208—1A Speed Kodak, focalplane, F:4.5 Velostigmat\$52.50

26209—1A Speed Kodak, focalplane, Zeiss Kodak Anastigmat F:6.3\$42.50

26210—1A Speed Kodak, focalplane, no lens.....\$25.00

26211—1½x2½ No. O Graphic, F:6.3 Kodak Anastigmat\$37.50

A DIRECT IMPORT ORDER QUICK! PRESENT SUPPLY LIMITED



Save
30%
on

Contessa-Nettel Cameras

Compact, finely constructed cameras with all modern adjustments such as rising front, also sliding front, full double extension with rack and pinion adjustment, infinity lock and focusing scale. Compur shutter is regularly equipped on each outfit. Also three holders and film pack adapter.

LENSES

Citar. A high grade F:6.3 Anastigmat lens, triple convertible, 3 lenses in one, guaranteed to give perfect satisfaction. An excellent all around lens.

Dagor. No description or selling talk need be made for the Goerz Dagor. Its high quality and the consistent satisfaction it has given for the past years has placed it among the very best of convertible lenses.

Zeiss Tritor. Sharp cutting, clean cut Anastigmat of a new three-glass construction which has met with world of approval.

Zeiss Amatar. Triple convertible lens. Three lenses in one, made with the regular Carl Zeiss precision.

Zeiss Tessar. For sharp, clean cut definition, the Carl Zeiss Tessar Ser. Iib F:6.3 absolutely leads the field, surpassed by none and acknowledged by all.

SPECIFICATIONS

ALTURA		FIDUCA-VOLUPA	
9x12 cm.	10x15 cm.	9x12 cm.	10x15 cm.
Size—4¾x2x6	Size—5¼x7¾x2	Size—1x5¾x4 5/16	Size—4⅞x7¼x2
Bellows—11¼	Bellows—14¼	Bellows—11½	Bellows—14¼
		List	Net
26212—9x12 Altura Citar F:6.3, Compur shutter.....		\$ 60.75	\$42.50
26213—9x12 Altura Zeiss Triotar F:6.3, in Compur shutter.....		69.00	48.30
26214—9x12 Fiduca, Goerz Dagor F:6.8, in Compur shutter.....		102.00	71.40
26215—9x12 Fiduca, Zeiss Triotar, F:6.3, in Compur.....		85.00	59.50
26216—9x12 Fiduca, Zeiss Amatar F:6.8, convertible Compur.....		97.50	68.25
26217—Fiduca, Zeiss Tessar F:6.3, Compur.....		97.50	68.25
26218—10x15 Volupa, Zeiss Tessar F:6.3, Compur.....		119.00	83.30
26219—10x15 Altura, Zeiss Tessar F:6.3, in Compur.....		107.00	74.90

NOTE.—The Contessa Altura is of wooden construction with metal bed of the very finest workmanship. The Contessa Fiduca is all metal and as fine an outfit of its type as can be made. The Volupa is of the same construction as the Fiduca but covered with Walrus grain leather. Kits for 3¼x4¼ or 3A, 50c each.

Compact Foreign Plate and Film Pack Cameras

S-31—4½x6 cm. Reitzschel full double extension, rising front, all adjustments with convertible F:6.8 Anastigmat in Compound shutter, film adapter.....\$50.00
 S-32—4½x6 cm. Goerz V. P. Tenax, built in Compound shutter, film adapter, 3 holders, Goerz Celor F:4.8, 3" focus.....\$47.50
 S-33—4½x6 cm. Newman & Guardis Baby Sybil, Carl Zeiss Tessar F:4.5 in Accurate shutter. A beautiful outfit complete with film adapter, plate holders, carrying case.....\$75.00
 S-34—4½x6 cm. Reitzschel full double extension, rising front, all adjustments, genuine Carl Zeiss Tessar F:4.5 in Compound shutter, film adapter, 3 holders.....\$75.00
 26220—6½x9 cm. Ica Ideal A, 3½" F:6.8 genuine Goerz Dagor, Compound shutter, film adapter, 3 holders.....\$67.50
 26221—6½x9 cm. Ica Bebe genuine Carl Zeiss Tessar F:4.5 in built-in Compound, film adapter, 3 holders.....\$85.00
 26222—2½x3½ Self Erecting Ernemann, genuine Goerz Dagor F:6.8 in Compound shutter, film adapter, 3 holders.....\$32.50
 26223—3¼x4¼ Uno Selfix Aldis F:7.7 lens, Automatic shutter, film adapter, focusing panel.....\$12.00
 26224—9x12 cm. Steinheil full double extension, rising and sliding front, rack and pinion adjustment, Steinheil convertible F:4.5 Anastigmat in Compur shutter, film adapter, 3 metal plate holders.....\$65.00
 26225—9x12 cm. Steinheil outfit, all adjustments, full double extension F:5.4 Steinheil convertible Anastigmat in Compur shutter.....\$56.75

26226—9x12 cm. Voigtlander Bergheil, full double extension, all adjustments, Voigtlander Collinear F:5.4 convertible in Koilos shutter, film adapter, 3 double holders, case.....\$49.50
 26227—9x12 Contessa Nettel Altura F:6.8 convertible Goerlitz Anastigmat in Compur, film adapter, 3 holders.....\$36.50
 26228—10x15 cm. Ica Leonar, all adjustments, full double extension 16½" genuine Carl Zeiss Tessar F:6.3 Compound shutter, film adapter, 3 holders.....\$72.50
 26229—5x7 Goerz Manufoc Tenax, finely made, all metal, compact, full double extension, rising front, 7" Goerz Celor F:4.8 in Compound, 3 holders, film adapter, case. A beautiful outfit.....\$100.00

GLUNZ CAMERAS

Freshly imported. Save 30%. Each outfit complete with 3 metal plate holders and film adapter, all have rack and pinion focusing device and focusing panel.
 26230½—6½x9 cm. with Helioplane F:6.8 Anastigmat in Ipso shutter. List, \$37.50. Net.....\$26.50
 26231½—6½x9 cm. with F:7.7 Aplanat in Vario shutter. List, \$34.00. Net.....\$23.00
 26232½—6½x9 cm. with Rapid Aplanat F:8 in Ipso. List, \$29.00. Net.....\$19.00
 26233½—9x12 cm. with genuine Eurynar F:6.8 Anastigmat in Vario shutter. List \$40.00. Net.....\$27.50
 26234½—9x12 cm. with Rapid Periscope F:11 in Perco. List, \$24.00. Net.....\$18.00

SPECIAL!

Final Clearance No. 1 Special Kodaks, Model A

Save 20%

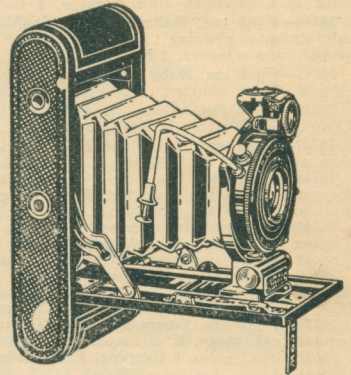
S-30—A special clearance of the Model A No. 1 Special Autographic Kodak, and that high grade F:6.3 Kodak Anastigmat in genuine Ilex Acme shutter with speeds from 1 second to 1/300 of a second. Brand new.

This No. 1 Special Kodak, of course, is one of the very finest cameras of this type ever manufactured. Box is all aluminum with special composite sides which make an elegant appearing instrument. Aluminum parts are covered with the finest quality cross-grained calf. A 20% saving is offered you, and as the supply is limited we urge you to order immediately. Do not delay.

LIST PRICE
\$43.00

Specifications
 For rectangular pictures 2¼x3¼, either vertical or horizontal. Capacity, 6 exposures without reloading. Size of camera, 1¾x3¾x6½. Weight, 26½ ounces. Lens, Kodak Anastigmat, F:6.3, 4½" focus. Shutter, Ilex Acme with special gear speeded from one second to 1/300, with cable release. New brilliant, reversible collapsible finder. 2 tripod sockets, and new lever focusing device.

OUR PRICE
\$34.40



Stereos

We specialize in only the very finest Stereo Cameras, and should the outfit you are in quest of not be listed, kindly advise, as we doubtless can supply it without delay, for we have a steady stream of these cameras coming and going at all times.

26231—45x107 Genuine Richard Verascope, Krauss Zeiss Tessars, F:4.5, roll holder, plate magazine with septums for both regular and autochrome plates, autochrome filters, also regular filters with self-transposing prismatic viewing scope, which eliminates the necessity of cutting autochromes or transposing regular plates, printing frame, tank, cases, automatic unclutter, all thoroughly complete and just like new. List price \$440.00; our price.....\$300.00

26232—45x107 Richard Verascope F:8 Rectilinear lenses, two magazines, carrying case for complete outfit. Excellent condition.....\$80.00

26233—6x13 cm. Ica Stereofix, Novar F:5.6 lenses, 3 metal plate holders.....\$50.00

26234—45x107 Stereo Pocket, a high grade outfit, fitted with good quality French F:5.5 Anastigmat lenses in automatic shutter. Complete with 3 plate holders.....\$45.00

26235—6x13 cm. Nettel Stereox, genuine Carl Zeiss Tessar F:4.5, outfit, of course, has regular Nettel Fo-

calplane shutter up to 1/1200 of a second, is complete with 12 metal plate holders, film pack adapter and carrying case. A beautiful, complete outfit.....\$160.00

26236—8½x17 cm. Ica Ideal Stereo, Carl Zeiss F:6.3 lenses in Compound shutter with 36 plate holders, focusing back.....\$125.00

26237—45x107 Ica Stereolette Folding model, dimensions when closed 3x1¾x5¾; weighs 20½ ounces. All adjustments, including Icometer finder, also reflecting finder. Box all metal, leather covered, fitted with 2½" focus genuine Carl Zeiss Tessar F:4.5 lenses. Complete with 3 double plate holders.....\$141.50

(Film adapter extra at \$2.75. Leather case \$6.00)

26238—45x107 Ica Polyscope, box type Stereo, dimensions 5¾x3x2½, weighs 32 ounces. Box all aluminum, fitted with 2½" focus genuine Carl Zeiss F:4.5 lenses in built-in Compound shutter. Complete with 6 plate holders and leather carrying case.....\$177.50

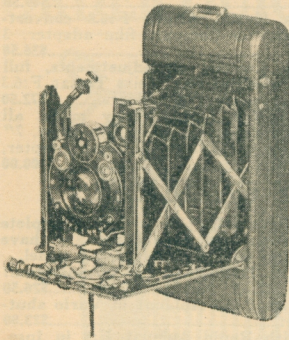
26239—Outfit as above equipped with special Ica 12 plate magazines, complete with carry- ing case.....\$200.00

26240—45x107 Contessa Nettel Duchessa, focusing adjustment F:4.5 Carl Zeiss Tessar lenses in Compound shutter, complete with 3 metal plate holders. A finely made outfit throughout, leather covered and very compact.....\$150.00

Bass can supply you with any French or German stereo, or any rare models, direct from Europe, at a saving of 25% to 35%. Direct importation.

ROLL FILM AND PACK

AUTO FIXT FOCUS BRAND NEW—ORDER AT ONCE



26348—Takes $2\frac{1}{2} \times 3\frac{3}{4}$ pictures, roll film, and is finely made. The front standard springs into position automatically when camera is opened. Finely engraved focusing scale on both inside and outside of camera, so that distance can be set before camera is set into operation. Outfit measures when closed, is covered with a fine grained genuine pincal morocco leather, and fitted with the genuine Goerz Celor F:4.8 in Ilex Acme shutter with speeds from one second to $1/300$ of a second. This camera is readily worth \$80. Bass offers a limited supply at the net price of.....

\$48⁵⁰

USED CAMERA SIZES

V. P.	No. 1	1A-2A	No. 3	No. 3A	No. 4	No. 4A
$1\frac{1}{2} \times 2\frac{1}{2}$	$2\frac{1}{4} \times 3\frac{1}{4}$	$2\frac{1}{2} \times 4\frac{1}{4}$	$3\frac{1}{4} \times 4\frac{1}{4}$	$3\frac{1}{4} \times 5\frac{1}{2}$	4x5	$4\frac{1}{4} \times 6\frac{1}{2}$

- 26242— $4\frac{1}{2} \times 6$ cm. Goerz V. P. Tenax, old model, Dagor F:6.8, built in shutter, film adapter, 3 holders.....\$25.00
- 26243— $4\frac{1}{2} \times 6$ cm. Goerz V. P. Tenax, Celor F:4.5, built in Compound, film adapter, 3 holders.....\$45.00
- 26244— $4\frac{1}{2} \times 6$ cm. Reitzschel full double extension, all adjustments, genuine Carl Zeiss Tessar F:4.5 in Compound, film adapter, 6 holders, case.....\$85.00
- 26245— $4\frac{1}{2} \times 6$ cm. Baby Sybil, F:4.5 Carl Zeiss Tessar, special silent shutter, film adapter, holders.....\$72.50
- 26246— $4\frac{1}{2} \times 6$ cm. Atom B, F:4.5 Carl Zeiss Tessar, Compound shutter, holders, adapter.....\$55.00
- 26247— $6\frac{1}{2} \times 9$ cm. Ica Bebe F:4.5 Carl Zeiss Tessar, film adapter, 3 plate holders.....\$70.00
- 26248— $6\frac{1}{2} \times 9$ cm. Ica Bebe, Carl Zeiss Tessar F:4.5, focusing panel, film adapter, plate holders and Graflex roll holder. Fine condition.....\$100.00
- 26249—Simplex Multiexposure camera, takes Motion Picture film $3\frac{1}{4} \times 1$, 400 pictures at one loading. F:3.5 Tessar lens, Compound shutter.....\$40.00
- 26250—Herbert & Huesgen Multiple Tourist, takes motion film, 400 pictures to the loading, F:3.5 Tessar lens, special guillotine shutter, and case.....\$75.00
- 26251— $4\frac{1}{2} \times 6$ cm. Goerz roll film Tenax, F:6.8 Telastigmat in Compound.....\$35.00
- 26252— $1\frac{1}{2} \times 2\frac{1}{2}$ No. 0 Graphic, F:6.3 Zeiss Kodak Anastigmat.....\$37.50
- 26253— $2\frac{1}{4} \times 2\frac{1}{4}$ Carbine F:7.7 in Lucos.....\$14.00
- 26254— $2\frac{1}{4} \times 2\frac{1}{4}$ Icarrette A, F:7.7 in Automatic.....\$15.00
- 26256—V. P. Autographic Kodak, Zeiss F:8 Anastigmat.....\$9.00
- 26257—V. P. Rexo F:7.5 in Ultex.....\$10.00
- 26258—V. P. Anso F:7.5, like new.....\$12.00
- 26259—V. P. Rexo, Dogmar F:4.5 in Acme.....\$37.50
- S-33—V. P. Autographic Kodak, F:7.7 Anastigmat, like new.....\$11.00
- S-34—V. P. Autographic Kodak, Achromatic lens, fine condition.....\$5.00
- S-35—V. P. Rexo Genuine Goerz Dogmar F:4.5 in Ilex Acme shutter. Like new. Special.....\$47.50
- S-36—V. P. Seneca F:7.5. Like new.....\$9.00
- S-37—V. P. Rexo F:6.3 in Acme shutter. A real buy at.....\$19.50
- S-38—V. P. Ernemann F:6.3, genuine Carl Zeiss in Automatic shutter.....\$35.00
- S-40—V. P. Goerz Roll Film Tenax, Goerz Dogmar F:4.5 in Compur shutter. The finest outfit of its type made. New.....\$66.00
- S-39—V. P. Autographic Kodak, Zeiss F:6.9 Anastigmat.....\$67.50
- S-41—V. P. Goerz Roll Film Tenax, genuine Goerz Dagor F:6.8 in Compur shutter.....\$64.00
- S-42—V. P. Goerz Roll Film Tenax, Goerz Tenastigmat F:6.3 in Compur shutter.....\$46.75
- S-43— $2\frac{1}{4} \times 3\frac{1}{4}$ Goerz Roll Film Tenax, rack and pinion focusing. A beautiful, finely made instrument. F:4.5 genuine Goerz Dogmar in Compur shutter. Price \$74.50
- S-44— $2\frac{1}{4} \times 3\frac{1}{4}$ Goerz Roll Film Tenax, rack and pinion focusing, Dagor F:6.8 in Compur shutter.....\$71.47
- S-45— $2\frac{1}{4} \times 3\frac{1}{4}$ Goerz Roll Film Tenax, rack and pinion focusing, Goerz Tenastigmat F:6.3 in Compur shutter.....\$53.33
- 26260—V. P. Kodak, S. A. lens.....\$4.00

- 26261—V. P. Autographic Kodak, Zeiss F:6.9 lens. Shows use.....\$13.00
- 26262—V. P. Seneca F:7.5.....\$9.00
- 26263—No. 1 Autographic Kodak Jr., S. A. lens.....\$12.00
- 26264—No. 1 Self-Erecting Ernemann, fitted with F:6.8 in Compound, film adapter, holders.....\$32.50
- 26265— $2\frac{1}{4} \times 3\frac{3}{4}$ No. 3 V. P. Anso Speedex F:6.3 in Acme.....\$29.00
- 26266—No. 1 Special Kodak, B. & L. F:6.3 in Optimo.....\$34.00
- 26267— $2\frac{1}{4} \times 3\frac{3}{4}$ Premo 12, F:6.3 Zeiss Kodak in Compound, film adapter, 3 holders.....\$35.00
- 26268— $2\frac{1}{4} \times 2\frac{1}{4}$ Icarrette A, F:4.5 Carl Zeiss Tessar in Compound. Like new.....\$55.00
- 26269— $2\frac{1}{4} \times 2\frac{1}{4}$ Icarrette A, Hekla F:6.8 in Automatic shutter.....\$19.00
- 26270—No. 1 Ingento Special, Radiar F:6.8 in Compound.....\$24.00
- 26271— $2\frac{1}{4} \times 3\frac{3}{4}$ No. 3 V. P. Anso Speedex F:4.5 in Acme.....\$37.50
- 26272—No. 1 Premoette, film pack, Achromatic.....\$3.00
- 26273—No. 1 Self Erecting Premoette, S. A. lens \$4.50
- 26274— $2\frac{1}{4} \times 3\frac{3}{4}$ Premo 12, R. R. lens, film adapter, holders.....\$14.00
- 26275— $2\frac{1}{4} \times 2\frac{1}{4}$ Icarrette A, F:6.8 Hekla, Compound.....\$23.00
- 26276— $2\frac{1}{4} \times 3\frac{3}{4}$ Premo 12, F:7.7, B. B. shutter, film adapter, holders.....\$18.50
- 26277— $2\frac{1}{4} \times 3\frac{3}{4}$ Premo 12, $4\frac{1}{2}$ " F:4.5 Tessar, Acme shutter, film adapter, holders.....\$57.50
- 26278— $2\frac{1}{4} \times 3\frac{3}{4}$ Autofixt Focus, roll film, Goerz Celor F:4.8 lens in Ilex Acme. New. Special at.....\$48.50
- 26279—1A Range Finder Kodak, brand new, Kodak Anastigmat F:6.3 in Optimo or Acme shutter as desired.....\$65.00
- 26280—1A Range Finder Kodak, brand new, Kodak Anastigmat F:6.3 in Kodimatic shutter.....\$70.00
- 26281—1A Range Finder Kodak, brand new, with B. & L. Kodak Anastigmat F:6.3 in Optimo or Acme shutter.....\$78.00
- 26282—1A Range Finder Kodak, brand new, with B. & L. Kodak Anastigmat F:6.3 with Kodimatic shutter.....\$83.00

A SPECIAL LOT OF REXO JR.'S

Handsome, efficient folding cameras, with bellows extension, automatic shutters with antinuous release. Use roll film. Each outfit ready for action. A special lot purchase enables your saving 20% from the list price of these outfits. Of course, the supply is limited to the stock on hand.

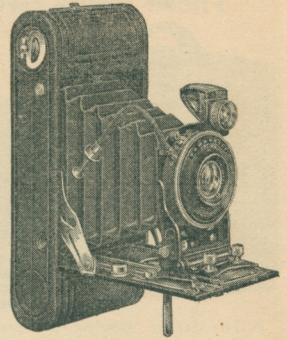
26350—1A Rexo Jr., Achromatic lens.....	\$10.80
26351—1A Rexo Jr., R. R. lens.....	\$12.40
26352—2C Rexo Jr., Achromatic lens.....	\$13.20
26353—2C Rexo with R. R. lens.....	\$15.00

KODAKS AND CAMERAS

SAGAMORE DE LUXE

Takes $2\frac{1}{4} \times 3\frac{3}{4}$ roll film, and gives the purchaser a high grade pocket camera of this type at the price of an ordinary hand camera. Camera has special lever focusing device, fine leather bellows, is covered with a fine grade of pinseal morocco leather, nickel parts, heavy nickel-plated, and fitted with a genuine F:5.6 Anastigmat lens in special geared shutter, speeds from $1/2$ to $1/200$ of a second. A special quantity purchase and our desire for a quick turnover enables you to buy one of these outfits at the special net price listed here. Bass recommends your acting quick. Each outfit absolutely guaranteed. Our price

\$34⁵⁰



Specifications Size of picture, $2\frac{1}{4} \times 3\frac{3}{4}$; size of camera, $6\frac{1}{2} \times 1 \times 3$. Weight, 21 oz. Lever focusing device, F:5.6 Anastigmat lens in special geared auto shutter with cable release, brilliant finder for both vertical and horizontal; aluminum camera body, covered with genuine pinseal grain morocco leather; metal parts finished in nickel and black enameled; black leather bellows; two tripod sockets; adjustable rising front.

26283—1A Range Finder Kodak, brand new, with B. & L. Tessar Ser. 11B F:6.3 with Optimo or Acme shutter	\$86.00
26284—1A Range Finder Kodak, brand new, with B. & L. Tessar Ser. 11B F:6.3 with Kodimatic shutter	\$91.00
26285—1A Range Finder Kodak, B. & L. Kodak Anastigmat, F:6.3 in Optimo shutter. Like new	\$62.50
26286—1A Range Finder Kodak, F:6.3 B. & L. Tessar in Optimo	\$70.00
26287—1A Range Finder Kodak, F:6.3 Kodak Anastigmat, Optimo shutter	\$50.00
26288— $2\frac{1}{4} \times 2\frac{1}{4}$ Icarette A., F:4.7 Carl Zeiss Tessar, Compound shutter	\$42.00
26289— $2\frac{1}{4} \times 3\frac{3}{4}$ Premo 12, F:6.3 Kodak Anastigmat Optimo	\$35.00
26290—1A Range Finder Kodak F:6.3 Kodak Anastigmat in Acme. Like new	\$55.00
26291—2A square end Autographic Brownie, R. A., B. B.	\$7.50
26292—No. 1 Horizontal model Brownie, Achromatic lens	\$3.50
26293—2A horizontal model Special Ansco F:6.3 in Automatic shutter	\$23.50
26294—1A Seneca, R. R., Trio shutter	\$10.00
26295—No. 1 Ingento Jr., Achromatic lens	\$5.00
26296—No. 1 square end Autographic Brownie, Achromatic lens in B. B. shutter	\$5.00
26297—1A Autographic Kodak Jr., Achromatic lens, B. B. shutter	\$11.50
26298—2C Autographic Kodak, F:7.7 in B. B. Like new	\$20.00
26299—2C Rexo Jr., R. R. lens, Ultex shutter	\$14.50
26300—No. 3 Autographic Special Kodak, brand new, Kodak Anastigmat F:6.3 in Optimo or Acme shutter	\$55.00
26301—No. 3 Autographic Special Kodak, brand new, Kodak Anastigmat F:6.3 in Kodimatic shutter	\$60.00
26302—No. 3 Autographic Special Kodak, brand new, B. & L. Kodak Anastigmat F:6.3 in Optimo or Acme shutter	\$70.00
26303—No. 3 Autographic Special Kodak, brand new, B. & L. Kodak Anastigmat F:6.3 in Kodimatic shutter	\$75.00
26304—No. 3 Autographic Special Kodak, brand new, B. & L. Tessar Ser. 11B F:6.3 in Optimo or Acme shutter	\$81.00
26305—No. 3 Autographic Special Kodak, brand new, B. & L. Tessar Ser. 11B F:6.3 in Kodimatic shutter	\$86.00
26306—No. 3 Red Bellows Kodak, F:6.3 Cooke in Compound	\$28.00
26307—No. 3 Premoette Sr. F:6.3 in Universal, film pack	\$19.00
26309— $3\frac{1}{4} \times 4\frac{1}{4}$ Premo 1, film pack, R. R. lens	\$5.00
26310—No. 3 Conley, R. R. in Victo	\$13.00
20311—No. 3 Kodak F:6 Voigtlander Dynar in Acme	\$30.00
26312—No. 3 Kodak, F:6.3 Cooke in Compound	\$35.00
26313—3A Seneca, R. R. lens in Auto shutter	\$14.00

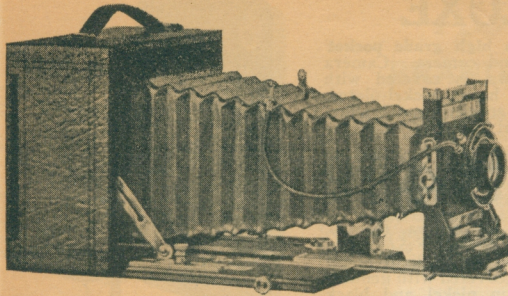
26314—No. 3 Rexo Jr. Achromatic lens	\$9.00
26315— $3\frac{1}{4} \times 4\frac{1}{4}$ Erecto, R. R. lens, Marvo shutter	\$15.00
26316— $3\frac{1}{4} \times 4\frac{1}{4}$ Nettel, F:6 genuine Anastigmat in Compound, double extension	\$45.00
26317—No. 3 Red Bellows, horizontal model Ansco, R. R.	\$6.50
26318—3A Autographic Range Finder Special, brand new, Kodak Anastigmat F:6.3 in Optimo or Acme shutter	\$74.00
26319—3A Autographic Range Finder, Special, brand new Kodak Anastigmat F:6.3 in Kodimatic shutter	\$79.00
26320—3A Autographic Range Finder Special, brand new, B. & L. Kodak Anastigmat F:6.3 in Optimo or Acme shutter	\$93.00
26321—3A Autographic Range Finder Special, brand new, B. & L. Kodak Anastigmat F:6.3 in Kodimatic shutter	\$98.00
26322—3A Autographic Range Finder Special, brand new, B. & L. Tessar Ser. 11B F:6.3 in Optimo or Acme shutter	\$104.50
26323—3A Autographic Range Finder Special, brand new, B. & L. Tessar Ser. 11B F:6.3 in Kodimatic shutter	\$109.50
26324—3A Premoette Sr. R. R., B. B. Shutter, film pack	\$10.00
26325—3A Folding Hawkeye, R. R. lens, Automatic shutter	\$10.00
26326—3A Rexo, F:6.3 Anastigmat in Universal shutter	\$30.00
26327—3A Range Finder Kodak, F:6.3 Kodak Anastigmat in Optimo shutter. Like new	\$65.00
26328—3A Range Finder Kodak, F:6.3 Kodak Anastigmat in Optimo. much used	\$50.00
26329—3A Autographic Kodak, R. R. lens in B. B. shutter	\$18.50
26331—3A Ingento Jr., R. R. lens, Marvo shutter	\$6.50
26332—3A Red Bellows Kodak, F:6.3 Scientific Anastigmat, pump shutter	\$16.00
26333—3A Ernemann F:6.3 Dogmar in Universal shutter, double extension, all adjustments	\$45.00
26334—3A Conley Jr., R. R. lens, Automatic shutter	\$10.00
26335—3A Special Kodak, not Range Finder, Zeiss Kodak Anastigmat in Compound. Like new	\$48.00
26336—3A Ensign R. R. lens, Automatic shutter	\$12.00
26339—No. 4 Triple Extension Hawkeye, R. R. lens in Automatic shutter	\$15.00
26340—4A Kodak, R. R. lens, Automatic shutter. Perfect	\$16.50
26341—4A Speed Kodak, Focalplane shutter, F:6.3 Anastigmat lens, Ilex Universal shutter. Perfect	\$38.00
26342—4A Kodak, 7" Celor F:4.8	\$50.00
26343—No. 4 Cartridge Kodak, R. R.	\$8.00

PANORAM CAMERAS

26344— $3\frac{1}{4} \times 8\frac{1}{2}$ Bell Panoram, R. R. lens	\$13.50
26345—No. 4 Panoram Kodak, complete	\$20.00
26346—No. 1 Panoram Kodak, complete	\$8.50
26347—No. 5B Al Vista Panoramic camera	\$12.50

BASS BARGAINS OF

These Items Are Listed at Less Than 1/2 Their Normal Value



26354—3/4x4 1/4 Double Extension Compact Camera, R. R. lens, automatic shutter, 2 plate holders.....\$7.50
 26355—3/4x4 1/4 Conley, leather covered, leather bellows, S. A. lens, 2 plate holders.....\$4.50
 26356—3/4x4 1/4 Korona Marvel Petit, R. R. lens, automatic shutter, 2 double holders.....\$6.00
 26357—3/4x4 1/4 No. 1 film pack Premo, S. A. lens, automatic shutter, perfect.....\$3.75
 26358—3/4x4 1/4 Pocket Poco, R. R. lens, leather bellows, leather covering, film pack adapter, 2 holders.....\$9.00
 26359—3/4x5 1/2 R. B. Seneca No. 6, R. R. lens, 3 plate holders.....\$12.50
 26360—3/4x5 1/2 R. B. Seneca No. 6, F:7.5 anastigmat in Universal shutter, 3 holders, carrying case.....\$22.50
 26361—3/4x5 1/2 Premo 9, double extension, all adjustments, Kodak F:7.7 lens, B. B. shutter, holders, carrying case; condition new.....\$35.00
 26362—3/4x5 1/2 Seneca No. 8 double extension, all adjustments, R. R. lens, automatic shutter, case, 3 holders.....\$19.00
 26363—3/4x5 1/2 Premo 9, double extension, all adjustments, F:6.3 Anastigmat lens in Universal shutter, case, holders.....\$45.00
 26364—3/4x5 1/2 R. B. Seneca No. 9 with Focalplane shutter; no lens.....\$18.00
 26365—3/4x5 1/2 R. B. Seneca No. 9, R. R. lens.....\$22.50
 26366—3/4x5 1/2 Pocket Seneca No. 29, R. R. lens, 2 holders.....\$5.75
 26367—3/4x5 1/2 Film Plate Premo, rack and pinion focusing, R. R. lens, film adapter, 2 holders.....\$9.50
 26368—3/4x5 1/2 Seneca 31, double extension, F:7.5 Anastigmat in Universal shutter, 3 holders.....\$16.00
 26369—3/4x5 1/2 Seneca No. 30, R. R. lens, automatic shutter, 2 holders.....\$6.50
 26370—3/4x5 1/2 Folding Klito, R. R. lens, 3 metal holders.....\$8.00
 26371—3/4x5 1/2 Filmette, R. R. lens for film pack \$3.00
 26372—3/4x5 1/2 Premo C, F:6.3 Anastigmat in Universal shutter, 3 holders.....\$19.00
 26373—3/4x5 1/2 Conley Model 11, F:7.5 Anastigmat in Universal, film adapter and one holder.....\$15.00
 26374—3/4x5 1/2 Conley Model 11, R. R. lens, 2 plate holders.....\$8.50
 26375—4x5 Seneca No. 9, R. R. lens, 3 holders, case—perfect.....\$27.50
 26376—4x5 Seneca No. 9, triple extension, swing back, all adjustments, leather covered, leather bellows, triple convertible F:6.3 Velostigmat, Optimo shutter, case, 3 holders.....\$57.50
 26377—4x5 Seneca No. 9, triple extension, swing back, all adjustments, leather covered, leather bellows, triple convertible F:7.5 Velostigmat, Universal shutter, case, 3 holders.....\$40.00
 26378—4x5 old model R. B. Cycle Graphic, triple extension, R. R. lens, 3 plate holders.....\$24.00
 26379—4x5 old model R. B. Cycle Graphic, triple extension, F:6.3 Anastigmat in Universal, 3 plate holders.....\$35.00
 26380—4x5 Conley Jr., R. R. lens, 2 plate holders \$5.00
 26381—4x5 Conley 15, R. B. double extension, R. R. lens, 3 holders and case, at.....\$18.50
 26382—4x5 Conley 15, R. B., double extension, F:7.5 Anastigmat in Universal, 3 holders and case.....\$27.50
 26383—4x5 Conley 15, R. B., double extension, F:6.3 Anastigmat in Universal, 3 holders and case.....\$33.00
 26384—4x5 Wizard Camera, R. R. lens, automatic shutter, 2 holders.....\$5.00
 26386—4x5 R. B. Seneca 7, rack and pinion focusing, R. R. lens, automatic shutter, 3 holders.....\$14.50

26386—4x5 Conley Jr., R. R. lens, 2 holders.....\$5.00
 26387—4x5 Film Plate Premo, rack and pinion focusing, leather bellows, R. R. lens, automatic shutter, 2 holders and adapter.....\$14.00
 26388—4x5 Serocco camera, R. R. lens, 2 double holders.....\$4.50
 26389—4x5 Ray No. 7, double extension, rack and pinion, automatic shutter, 3 double holders.....\$8.00
 26390—4x5 Ray Special S. A. lens, one holder.....\$2.50
 26391—4x5 Premo No. 15, R. R. lens, automatic shutter, 2 holders.....\$5.50
 26392—4x5 Pony Premo No. 4, rack and pinion adjustment, R. R. lens, automatic shutter, 2 holders, film adapter, case.....\$10.00
 26393—4x5 R. B. Seneca, R. R. lens, 3 holders.....\$8.00
 26394—4x5 R. B. Korona No. 1, R. R. lens, 2 holders.....\$6.50
 26395—4x5 Pocket Seneca, S. A. lens, one holder.....\$3.00
 26396—4x5 Pony Premo 5, R. R. lens, 2 holders, adapter.....\$7.00
 26397—No. 4 Cartridge Kodak, R. R. lens, roll film.....\$5.00
 26398—4x5 Triple Extension Century, convertible rectilinear lens, 3 double plate holders.....\$24.00
 26399—4x5 Triple Extension Century, Ser. 1, triple convertible Velostigmat in Acme shutter, 3 double plate holders.....\$42.50
 26400—4x5 R. B. Seneca No. 9, triple extension, all adjustments, fitted with F:6.3 triple convertible Turner Reich in Universal shutter, 3 holders, film adapter and leather case.....\$56.50
 26401—4x5 R. B. Seneca No. 6, R. R. lens, case, holders.....\$13.00
 26402—4x5 6 1/2 Conley, R. R. lens, 2 double plate holders.....\$6.50
 26403—5x7 Pony Premo No. 4, rack and pinion, rising front, leather bellows, R. R. lens, 2 holders.....\$12.50
 26404—5x7 Premo 8, R. R. lens, 3 holders.....\$10.00
 26405—5x7 Cycle Poco No. 3, R. R. lens, 2 holders \$6.00
 26406—5x7 Seneca 3, R. R. lens, 2 holders.....\$7.00
 26407—5x7 Premo, old model, front and rear extension, total about 20", all adjustments, R. R. lens.....\$15.00
 26408—5x7 Telephoto Cycle Poco, R. R. lens, 3 holders.....\$11.00
 26409—5x7 R. B. Seneca No. 7, rack and pinion focusing, rising front, R. R. lens, 2 holders.....\$13.00
 26410—5x7 R. B. Seneca No. 7, rack and pinion focusing, rising front, F:7.5 Anastigmat in Universal, 2 holders.....\$27.50
 26411—5x7 Premo Supreme, extra long extension R. R. lens, 3 holders.....\$16.00
 26412—5x7 Premo Supreme, Ser. 1, triple convertible Velostigmat in Ilex Universal shutter, 3 holders, leather case.....\$51.00

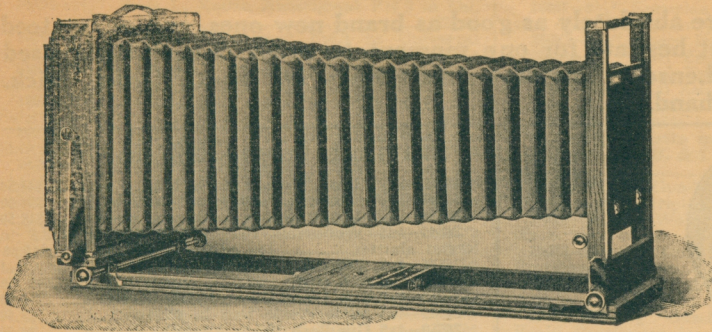
FACTORY LOT OF SENECAS

Clearance Lot of Brand New Senecas
 No. 8 and No. 9

S-14—5x7 Seneca No. 8, swing back, R. B., brilliant finder, full double extension, black leather bellows, black leather covering, rising front, with F:8 rectilinear lens in automatic shutter. List \$60.00. Special, complete with carrying case and one holder.....\$30.00
 S-15—5x7 Seneca No. 8, same as above, with F:6.3 Anastigmat lens in Ilex Acme shutter. List price \$92.00. Our price.....\$57.50
 S-16—5x7 Seneca No. 8, same as above, with F:6.3 Wollensak Velostigmat Ser. 1 in triple convertible, giving three lenses in one, in Optimo shutter. List \$110.00. Net.....\$67.50
 S-17—3/4x5 1/2 Seneca No. 9, R. B., triple extension and all possible adjustments such as rising front, sliding front, swing back, R. B., etc.; fine leather bellows, all leather covered, with R. R. lens in automatic shutter, complete with leather carrying case and plate holder. List \$68.00. Net.....\$37.50
 S-18—3/4x5 1/2 Seneca No. 9 with all adjustments, same as above, fitted with F:6.3 Anastigmat lens in Ilex Acme shutter. List price \$100.00. Our price.....\$54.00
 S-19—5x7 Seneca No. 9, triple extension, rising front, etc., as above, with carrying case and plate holder, R. R. lens. List \$30.00. Our price.....\$42.00
 S-20—5x7 Seneca No. 9, as above, with F:6.3 Anastigmat lens in Ilex Universal shutter. List \$110.00. Our price.....\$75.00

PLATE CAMERAS

VIEW CAMERAS AND OUTFITS

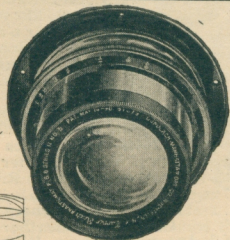


- 26413—5x7 Film Plate Premo, R. R. lens, 2 holders\$11.00
- 26414—5x7 Film Plate Premo, F:6.3 Velostigmat in Acme, 2 holders..... 37.50
- 26415—5x7 R. B. Sorocco, R. R. lens.....\$9.00
- 26416—5x7 R. B. Seneca No. 6, F:7.5 Anastigmat in Universal shutter, 2 holders, carrying case.....\$27.00
- 26417—5x7 R. B. Century, double extension, all adjustments, R. R. lens, case, 3 holders.....\$10.00
- 26418—5x7 R. B. Century, double extension, all adjustments, F:6.3 Anastigmat in Ilex Universal shutter, case, 3 holders.....\$37.50
- 26419—5x7 R. B. Seneca No. 8 double extension R. R. lens, case, 3 holders.....\$20.00
- 26420—5x7 R. B. Seneca No. 8 double extension, F:4.5 Velostigmat in automatic shutter, case, 3 holders.....\$55.00
- 26421—7x5 Roll Film Cartridge Kodak, R. R. lens.....\$6.50
- 26422—5x7 Pony Premo No. 7, R. R. lens, 3 holders, fine condition\$23.00
- 26423—5x7 Pony Premo No. 7, F:7.5 Anastigmat, 3 holders, fine condition.....\$37.50
- 26424—5x7 R. B. Seneca No. 6, rising front, F:6.8 Anastigmat, case, 3 holders.....\$30.00
- 26425—5x7 Seneca No. 9, triple extension, all adjustments, R. R. lens, case, 3 holders.....\$30.00
- 26426—5x7 Seneca No. 9, triple extension, all adjustments, F:4.5 Velostigmat in Automatic shutter, case, 3 holders\$65.00
- 26427—5x7 Seneca No. 9, triple extension, all adjustments, Ser. 1 F:6.3 triple convertible Velostigmat in automatic shutter, case, 3 holders.....\$58.00
- 26428—5x7 Pony Premo No. 6, R. R. lens, case, 3 holders.....\$16.50
- 26429—5x7 Conley Model 15, R. R. lens, case, 3 holders.....\$19.50
- 26430—5x7 Conley Model 15, F:6.3 Anastigmat in Universal shutter, case, 3 holders.....\$35.00
- 26431—6½x8½ Pony Premo No. 7, double extension, all adjustments, R. R. lens, automatic shutter, carrying case, 3 holders.....\$30.00
- 26433—6½x8½ R. B. Seneca No. 8, double extension, all adjustments, F:7.5 Anastigmat in automatic shutter, carrying case, 3 holders.....\$48.00
- 26434—6½x8½ R. B. Premo Sr., no lens, one holder\$11.50
- 26435—6½x8½ R. B. Cycle Graphic, good condition, R. R. lens, automatic shutter.....\$35.00
- 26436—6½x8½ R. B. Cycle Graphic good condition, 10½" Ser. 11 triple convertible Turner Reich Anastigmat in automatic shutter, carrying case, 3 holders\$85.00
- 26437—6½x8½ R. B. Century, double extension R. R. lens, automatic shutter.....\$19.00
- 26438—6½x8½ Cycle Graphic, triple extension, R. B. rising front, all possible adjustments, heavy leather bellows, fine leather covering, camera complete with Graflex Focalplane shutter with speeds from 1/10 to 1/1000 of a second, 3 double plate holders, and fitted with R. R. lens in automatic shutter. Special.....\$60.00
- 26439—6½x8½ Cycle Graphic as above with 8¼" genuine Goers Dagor F:6.8 in Ilex shutter, complete with 3 double plate holders, at the net price of.....\$105.00
- With 10½" Turner Reich.....\$125.00
- 26441—4x5 Korona View, case, one holder, no lens, condition like new.....\$25.00
- 26442—4x5 Korona View, 7¼" Verito in Auto shutter, case, 3 holders, like new.....\$50.00
- 26443—4x5 Korona View, 6½" F:7.5 Anastigmat in Universal shutter, like new.....\$37.50
- 26444—4x5 Korona View, 7" F:4.5 Velostigmat in Automatic shutter, perfect, case, 3 holders\$64.00
- 26445—5x7 Conley B View Camera, all adjustments, R. R. lens, case, 3 holders.....\$15.00
- 26446—5x7 Seneca Camera, City View, leather bellows, leather covered, R. R. lens, case, 3 holders.....\$22.50
- 26447—5x7 Seneca Camera, City View, leather bellows, leather covered, F:6.3 Anastigmat lens, Ilex Universal shutter, case, 3 holders.....\$44.00
- 26448—5x7 Home Made View, Seneca focalplane shutter, no lens.....\$15.00
- 26449—5x7 Seneca Competitor View, R. R. lens, case, 3 holders\$15.00
- 26450—5x7 Korona View Camera, no lens, case, one holder; new\$32.50
- 26451—5x7 Korona View Camera, 8¼" Verito F:4 in Studio shutter, case, 3 holders. Like new.....\$60.00
- 26452—5x7 Korona View Camera, 5x7 F:4.5 Velostigmat in Automatic shutter.....\$67.50
- 26453—6½x8½ Improved Seneca View, no lens, case, 2 holders\$18.00
- 26454—6½x8½ Improved Seneca View, R. R. lens, automatic shutter, case, 3 holders.....\$28.50
- 26455—6½x8½ Century View, case, 3 holders, absolutely perfect, R. R. lens, automatic shutter.....\$30.00
- 26456—6½x8½ Century View, no lens, 2 holders.....\$12.00
- 26457—6½x8½ R. O. C. View Camera, no lens, one plate holder\$9.50
- 26458—6½x8½ R. O. C. View Camera, R. R. lens, 2 holders, case\$16.00
- 26459—6½x8½ R. O. C. View, 3 plate holders.....\$15.00
- 26460—6½x8½ R. O. C. View, R. R. lens, 3 holders, case; very fine condition.....\$25.00
- 26461—6½x8½ Improved Seneca View Camera, R. R. lens, 3 holders.....\$21.00
- 26462—6½x8½ Empire State View, 3 holders.....\$10.00
- 26463—6½x8½ Empire State View, R. R. lens, 3 holders.....\$21.00
- 26464—6½x8½ No. 2 Empire State View, perfect condition, case, 3 holders, F:6.3 Anastigmat lens in automatic shutter\$51.00
- 26465—6½x8½ Korona View, no case, one plate holder, all adjustments\$35.00
- 26466—6½x8½ Korona View, R. R. lens, one plate holder, all adjustments\$47.50
- 26467—6½x8½ Korona view with 9½" F:4.5 Velostigmat in automatic shutter, one plate holder, all adjustments\$150.00
- 26468—8x10 Korona View Camera, R. R. lens, carrying case, one plate holder.....\$52.90
- 26469—8x10 Korona View Camera, 12" F:4.5 Velostigmat with diffusing device in Universal shutter, 3 double plate holders.....\$167.50
- 26470—14x17 Empire State View Camera, no lens. List \$120.00. Brand new, at, net.....\$50.00
- 26471—14x17 Empire State View Camera, fitted with 19" F:6.3 Sterling Anastigmat in barrel, with Iris diaphragm\$105.00
- 26471½—Korona Panoramic View Camera, just like new, complete with carrying case and one plate holder. No lens\$38.00
- 26471¾—Korona Panoramic View Camera, just like new, with wide angle B. & L. Zeiss Protar in Universal shutter.....\$85.00

BASS GUARANTEED Used Lenses

Lenses Don't Wear Out

Bass used Lenses are absolutely as good as brand new ones, and guaranteed as such. You need not hesitate for one moment to order one of these used as good as new Bass Lenses. You save real money on them. Order quick. Only one of a kind on hand.



26471-1 3/4"	Beck Telephoto, negative element.....	\$15.00
26472-1 3/8"	Carl Zeiss Tessar, F:3.5 in bbl.....	\$33.50
26473-1 3/8"	Carl Zeiss F:3.5 in focusing mount.....	\$38.25
26474-1 3/8"	Goerz Hypar in bbl.....	\$32.00
26475-32	M.M. B. & L. Tessar F:3.5 in focusing mount.....	\$36.00
26476-50	M.M. B. & L. Tessar F:3.5 in focusing mount.....	\$34.00
26477-2"	Carl Zeiss Tessar F:3.5 in bbl.....	\$36.00
26478-2"	Carl Zeiss F:3.5 in focusing mount.....	\$40.50
26479-2"	Voigtlander Helomar F:3.2 in bbl.....	\$27.50
26500-72	M.M. B. & L. Zeiss Tessar, Ser. 1C F:4.5, in bbl.....	\$18.00
26501-2 3/8"	Voigtlander Heliar F:3.2 in bbl.....	\$22.50
26502-3"	Carl Zeiss Tessar F:3.5 in bbl.....	\$40.50
26503-3"	Carl Zeiss F:3.5 in focusing mount.....	\$45.00
26504-3"	Cooke F:3.5 in bbl.....	\$32.50
26505-3"	Goerz Hypar in bbl. with Iris diaphragm.....	\$36.00
26506-3"	Dallmeyer Cinematographer F:1.9 in focusing mount.....	\$67.50
26507-3 1/2"	Carl Zeiss 1C F:4.5 in bbl.....	\$38.25
26508-3 1/2"	Carl Zeiss 1C F:4.5 in sunk mount.....	\$40.50
26509-3 1/2"	B. & L. Tessar 1C F:4.5 in bbl.....	\$32.00
26510-4"	Carl Zeiss Protar Ser. VIIa, F:6.3 in bbl.....	\$67.50
26511-4"	Carl Zeiss Tessar 1C F:3.5 in bbl.....	\$49.50
26512-4"	Carl Zeiss 1C F:3.5 in focusing mount.....	\$54.00
26513-4 1/2"	Carl Zeiss Protar Ser. VIIa, F:7 in bbl.....	\$70.00
26514-4 1/2"	B. & L. Tessar, 1C F:4.5 in bbl.....	\$37.80
26515-4 1/2"	B. & L. Tessar F:4.5 in bbl.....	\$32.50
26517-4 3/4"	Carl Zeiss Ser. 1C F:4.5 in bbl.....	\$43.25
26518-4 3/4"	Carl Zeiss 1C F:4.5 in sunk mount.....	\$45.00
26519-4 3/4"	Voigtlander Heliar, F:4.5 in Ilex Universal shutter.....	\$32.50
26520-4 3/4"	Voigtlander Heliar F:4.5 in focusing mount.....	\$45.00
26521-4 3/4"	Goerz Celor F:4.8 in bbl.....	\$20.00
26522-5"	Carl Zeiss Protar Ser. VIIa, F:6.3 in bbl.....	\$72.50
26523-5"	Zeiss Kodak F:6.3 in Auto shutter.....	\$17.50
26524-5"	Anso Anastigmat in Optimo shutter.....	\$16.00
26527-5"	Citar Anastigmat F:6.3 in Ilex Acme shutter.....	\$15.00
26528-5"	Monitor Anastigmat F:7.5 in General shutter.....	\$10.00
26529-5"	Turner Reich, triple convertible F:6.8 in Compur shutter.....	\$24.50
26530-5"	B. & L. Zeiss Tessar, Ser. 1C F:4.5 in bbl.....	\$42.00
26531-5"	Wollensak, Ser. 11, F:4.5 lens in bbl.....	\$32.50
26532-5"	Cooke, Ser. 111 F:6.5 in bbl; used.....	\$15.00
26533-5 1/4"	Carl Zeiss Ser. 1C F:4.5 in bbl.....	\$43.25
26534-5 1/4"	Vinco Anastigmat F:6.3 in bbl.....	\$12.00
26535-5 1/4"	Aristo Anastigmat F:5.4 in bbl.....	\$18.00
26536-5 1/4"	B. & L. Tessar 1C F:4.5 in bbl.....	\$43.20
26537-5 1/4"	Carl Zeiss 1C F:4.5 in bbl.....	\$47.50
26538-5 1/4"	Carl Zeiss 1C F:4.5 in sunk mount.....	\$49.50
26539-5 1/2"	Euryнар F:6.4 in bbl.....	\$22.50

Savings from 30% to 70%

26542-5 1/2"	Ross Xpres F:4.5 in bbl.....	\$44.50
26543-5 1/2"	Kodak Anastigmat F:4.5 in bbl.....	\$34.50
26544-5 1/2"	Dynar F:6 in Compound shutter.....	\$18.50
26545-4x5	Wollensak Velostigmat Ser. 1 F:6.8 in Regno shutter.....	\$16.00
26546-4x5	Zeiss Anastigmat Ser. 11 in Universal shutter.....	\$22.50
26548-4x5	Rapid Rectilinear F:8 in barrel.....	\$8.50
26549-4x5	Wide Angle lens in shutter.....	\$8.50
26550-4x5	Gundlach Wide Angle in shutter.....	\$8.50
26551-4x5	Emil Wide Angle lens in bbl.....	\$7.50
26553-5 3/4"	Carl Zeiss Protar Ser. VIIa F:7 in bbl.....	\$80.00
26554-6"	Carl Zeiss 1C F:4.5 in sunk mount.....	\$51.25
26555-6"	Carl Zeiss 1C F:4.5 in sunk mount.....	\$54.00
26556-6"	Carl Zeiss Protar Ser. VIIa F:7.7 in bbl.....	\$90.00
26557-6"	Triple Convertible German Anastigmat, no name, single elements, 13 1/2" focus in bbl.....	\$22.00
26558-6"	Cooke Extension Attachment, Ser. III.....	\$5.00
26560-6"	Ernemann Projection lens.....	\$7.50
26561-6"	Krauss Zeiss Tessar in bbl.....	\$42.50
26562-6"	Dallmeyer Stigmatic F:6.3 in Ilex Acme shutter.....	\$32.00
26563-6"	Wollensak Velostigmat, Ser. II F:4.5 in Regno shutter.....	\$42.00
26564-6"	Wollensak Velostigmat, Ser. II F:4.5, in sunk mount.....	\$42.00
26565-6"	Turner Reich, Ser. II F:6.8, triple convertible in shutter.....	\$28.00
26566-6"	Goerz Dogmar F:4.5 in Ilex Universal.....	\$62.50
26567-6"	Goerz Celor F:4.8 in Compound.....	\$30.00
26568-6"	Cooke Ser. III F:6.5 in bbl.....	\$18.00
26569-6"	Rodenstock Euryнар F:4.5 in bbl.....	\$45.00
26570-6"	Velostigmat, Ser. II in bbl.....	\$37.00
26571-6"	Ross Xpres F:4.5 in bbl.....	\$52.00
26572-6"	B. & L. Kodak Anastigmat F:6.3 in bbl.....	\$18.00
26573-6 1/2"	Carl Zeiss Ser. 1C F:4.5 in bbl.....	\$58.50
26574-6 1/2"	Carl Zeiss 1C F:4.5 in sunk mount.....	\$63.00
26575-6 1/2"	B. & L. Tessar 1C F:4.5 in bbl.....	\$50.40
26576-6 1/2"	Wollensak Anastigmat F:6.3 in bbl.....	\$14.00
26577-6 1/2"	Wollensak Anastigmat F:6.3 in Universal shutter.....	\$17.50
26578-6 1/2"	Bass Planastigmat F:6.3 in Safety shutter.....	\$13.50
26579-6 1/2"	Bass Planastigmat F:6.3 in Ilex Universal shutter.....	\$15.50
26580-6 1/2"	Sylvar Anastigmat F:6.3 in Ilex Acme shutter.....	\$22.50
26582-6 1/2"	Rodenstock Anastigmat F:6.8 in Ilex Universal shutter.....	\$17.50
26583-6 1/2"	Ilex Anastigmat F:6.3 in Optimo shutter.....	\$17.50
26584-6 1/2"	Wollensak Anastigmat Ser. V F7:5 in Auto shutter.....	\$8.00
26585-6 1/2"	Goerz Syntor F:6.8 Anastigmat in Automatic shutter.....	\$14.00
26586-6 1/2"	Verito F:6 in B. B. shutter.....	\$14.50
26587-6 1/2"	Verito in bbl., F:6.....	\$14.00
26588-6 1/2"	Berthiot Olor F:5.7, Symmetrical Anastigmat in sunk mount.....	\$35.00
26589-6 1/2"	Voigtlander Collinear F:5.4.....	\$29.00
26590-6 1/2"	Zeiss Kodak Anastigmat F:6.3 in bbl.....	\$18.50
26591-6 1/2"	Cooke F:5.6 in bbl.....	\$15.00
26592-6 3/4"	Voigtlander Dynar F:6.8 in bbl.....	\$17.50
26592 3/8-6 3/4"	Cooke, Ser. II F:4.5 old model, in brass bbl.....	\$40.00
26593-6 1/2"	B. & L. Zeiss Tessar F:6.3 in bbl.....	\$20.00
26594-6 1/2"	B. & L. Tessar, Ser. 11b F:6.3 in Ilex Universal shutter.....	\$25.00
26595-6 1/2"	Ilex Anastigmat F:6.3 in bbl.....	\$12.00
26596-6 1/2"	Voigtlander Heliar F:4.5 in bbl.....	\$37.50

ARE 1000% PERFECT

26597—6¾" Carl Zeiss Protar, Ser. VIIa F:6.3 in bbl.	\$87.50
26598—6¾" B. & L. Kodak Anastigmat F:6.3 in bbl.	\$22.00
26600—6¾" Bass Planastigmat F:6.3 in Universal shutter	\$18.50
26601—Serocco Portrait Rectilinear in Unicum shutter	\$6.50
26602—5x7 Conley, triple convertible F:8 in Conley Safety shutter	\$8.50
26603—5x7 Versar, Ser. IV F:6, convertible in Regno shutter	\$12.00
26604—5x7 Scientific Anastigmat F:6.8 in Regular shutter	\$14.00
26605—5x7 Matthews Wide Angle with Waterhouse stops	\$10.00
26606—5x7 Ideal Extreme Wide Angle in bbl.	\$12.50
26607—5x7 Aplanat F:8 in bbl.	\$8.50
26608—5x7 Rapid Rectilinear F:8 in bbl.	\$7.50
26609—5x7 Wollensak, Extreme Wide Angle, 4" focus in bbl.	\$15.00
26610—5x7 Scientific Wide Angle Anastigmat.	\$12.00
26611—5x7 Wollensak Wide Angle F:12.	\$10.00
26612—5x7 Ross R. R. F:8 in bbl.	\$8.50
26613—5x7 Morrison Wide Angle Lens with Waterhouse stops	\$7.50
26614—5x7 Ingento Anastigmat F:6.8 in bbl.	\$22.50
26615—5x7 Goldsmith Rapid Rectilinear F:6.	\$10.00
26616—5x7 Burke & James F:6, Ser. D in bbl.	\$15.00
26617—5x7 Crown Anastigmat F:6.3 in bbl.	\$15.00
26618—5x7 Emil Wide Angle lens with Waterhouse stops	\$7.50
26619—7" Carl Zeiss Tessar, Ser. 1C F:4.5 in bbl.	\$67.50
26620—7" Carl Zeiss 1C F:4.5 in sunk mount.	\$73.00
26621—7" B. & L. Zeiss Unar F:6.8 in Ilex Universal shutter	\$26.00
26622—7" B. & L. Zeiss Unar F:6.8 in bbl.	\$17.00
26623—7" Rodenstock Euryrur F:6.8 in bbl.	\$18.00
26624—7" Carl Zeiss 1C F:4.5 in bbl.; used.	\$55.00
26625—7" Wollensak Velostigmat, triple convertible F:6.3 in Optimo shutter.	\$35.00
26626—7" Wollensak Ser. 11 F:4.5 in bbl.	\$37.50
26628—7" Voigtlander Dynar in bbl., F:6.	\$30.00
26629—7" Genuit Anastigmat F:6.8, Symmetrical in barrel	\$27.50
26630—7" Carl Zeiss Tessar 11b F:6.3 in bbl.	\$50.00
26631—7" Ross Homocentric F:6.8.	\$17.50
26632—7" Goerz Dagor Ser. 111 in bbl.	\$37.50
26633—7" Goerz Celor F:4.8 in shutter.	\$37.50
26634—7" Voigtlander Dynar F:6 in Automatic shutter	\$34.00
26636—5x7 Extreme Wide Angle F:16 in Auto shutter	\$17.75
26637—5x7 Wide Angle Velostigmat F:9.5 in bbl.	\$36.50
26638—5x7 Wide Angle Velostigmat F:9.5 in Auto shutter	\$40.00
26639—5x7 B. & L. Extreme Wide Angle, Ser. V F:18 in bbl.	\$25.20
26640—7¼" Carl Zeiss Protar Ser. VIIa F:7 in bbl.	\$97.50
26641—7¼" Verito F:4 in bbl.	\$27.50
26643—7¼" F:7.5 Ilex Anastigmat in bbl. with Iris diaphragm	\$14.00
26644—7¼" F:7.5 Ilex Anastigmat with Ilex Universal shutter	\$23.50
26645—7½" Kodak Anastigmat F:4.5 in bbl.	\$39.00
26646—7" B. & L. Tessar 1C F:4.5 in bbl.	\$56.00
26647—7½" Gundlach Anastigmat in Ilex Acme.	\$35.00
26648—7½" Turner Reich Ser. II Triple Convertible F:6.8 in bbl.	\$37.50
26649—7.8" Cooke Series III F:6.5	\$30.00
26650—5x8 Zeiss Anastigmat, Ser. 11a F:6.3.	\$15.00
26651—Telephoto attachment for 5x8 B. & L. Tessar	\$12.00
26652—8" Carl Zeiss Protar Ser. VIIa F:6.3 in bbl.	\$107.50
26653—8" Cooke Telar F:7 in bbl.	\$17.50
26654—8" Gundlach Projection lens.	\$8.50
26655—8" Projection lens.	\$12.00
26656—8¼" F:7.5 Ilex Anastigmat in bbl. with Iris diaphragm	\$19.50
26656½—8¼" Zeiss Kodak Anastigmat F:6.3 in Compound shutter	\$42.00
26657—5x8 8¼" Crown Anastigmat F:6.3 in bbl.	\$22.50
26658—8¼" Goerz Anastigmat F:6.8 in Multipress shutter	\$17.50
26659—8¼" Goerz Celor F:15 Anastigmat in bbl.	\$45.00

26660—8¼" Goerz Dagor Ser. III F:6.8 in Optimo shutter	\$54.00
26661—8¼" Euryplan F:4.5 fitted to right angle prism and optical flat, for process work.	\$125.00
26663—8¼" Goerz Dagor F:6.8 in bbl.	\$50.00
26664—8¼" Carl Zeiss 1C F:4.5 in bbl.	\$87.25
26665—8¼" Carl Zeiss 11b F:6.3 in bbl.	\$52.00
26666—8¼" Carl Zeiss 1C F:4.5 in sunk mount.	\$92.25
26668—8¼" B. & L. Tessar 1C F:4.5 in bbl.	\$75.60
26670—8¼" Verito in Auto shutter.	\$37.50
26671—8¼" Verito in Studio shutter.	\$34.50
26673—6½x8½" B. & L. Rectilinear in Automatic shutter	\$12.00
26674—6½x8½" Gundlach Rapid Rectigraphic in Automatic shutter, triple convertible.	\$18.50
26675—6½x8½" Wollensak Rapid Rectilinear in Automatic shutter	\$10.50
26676—6½x8½" Gundlach, triple convertible, Rapid Rectilinear in Auto shutter.	\$14.00
26677—6½x8½" B. & L. Rapid Universal in Unicum shutter	\$12.00
26678—6½x8½" Gundlach Manhattan, convertible, Rapid Rectilinear in Automatic shutter.	\$16.00
26679—6½x8½" B. & L. Tessar 1C F:4.5.	\$105.00
26680—6½x8½" B. & L. Tessar, Ser. 1C F:4.5.	\$97.50
26683—6½x8½" Scientific Extreme Wide Angle.	\$10.00
26684—6½x8½" Emil Wide Angle lens in shutter.	\$14.50
26685—6½x8½" Wollensak extreme wide angle.	\$19.00
26686—6½x8½" Conley Wide Angle in shutter.	\$14.50
26687—6½x8½" Conley Wide Angle in bbl.	\$10.00
26688—6½x8½" Wide Angle Velostigmat F:9.5 in bbl.	\$42.50
26689—6½x8½" Wide Angle Velostigmat F:9.5 in Auto shutter	\$45.75
26690—6½x8½" Extreme Wide Angle F:16 in bbl.	\$20.40
26691—6½x8½" Extreme Wide Angle F:16 in Auto shutter	\$23.75
26692—6½x8½" B. & L. Extreme Wide Angle, Ser. V, F:18 in bbl.	\$30.60
26693—9" Ross Telecentric F:5.4 in bbl., actual focus 5½"	\$50.00

Direct Import

Dr. Rudolph's new formula, the F.4 double convertible Plasmat, a lens with the sharpest possible cutting qualities, convertible, the doublet working at the ultra speed of F:4 and the single element working at F:8. Bass absolutely guarantees this lens to give entire satisfaction.

S-21—6" F:4 Double Convertible Plasmat in new model Compound	\$65.00
S-22—8¼" F:4 Plasmat in barrel with Iris Diaphragm	\$70.00

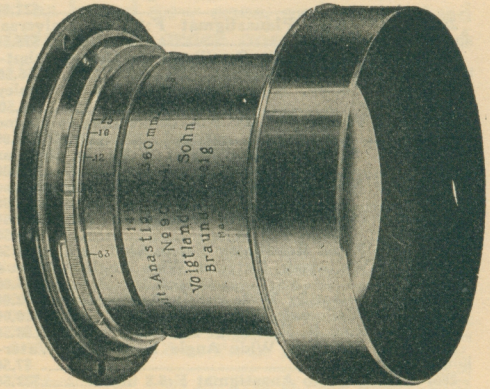
Also the high grade Aristigmat Wide Angle Anastigmat at a saving of 50% on its actual list.

S-23—7" F:9 Aristigmat Anastigmat Wide Angle in barrel with Iris diaphragm. List, \$45.00. Net.	\$22.50
---	---------

26694—9" Verito F:4 in regular shutter	\$27.50
26695—1A Dallmeyer Rectilinear with Waterhouse stops	\$10.00
26696—9½" Wollensak Ser. II F:4.5 Anastigmat in Studio shutter, like new.	\$95.00
26697—9½" Carl Zeiss Protar Ser. VIIa F:6.3 in bbl.	\$140.00
26699—9½" F:6.3 Ilex Anastigmat in bbl. with Iris diaphragm. A highly corrected lens.	\$37.50
26700—10" Carl Zeiss 1C F:4.5 in bbl.	\$126.00
26701—10" Carl Zeiss 1C F:4.5 in sunk mount.	\$132.25
26702—10" Demaria Sigmar Anastigmat, convertible F:6.8	\$35.00
26703—10" Hawkeye Aerial Anastigmat F:4.5 in special barrel; no diaphragm.	\$55.00
26704—10" Smith Doublet F:4.5.	\$15.00
26705—8x10 Cooke Ser. 11 F:4.5, 13" focus in soft focus combination barrel.	\$125.00
26706—8x10 Conley Wide Angle in Conley Safety shutter	\$14.00
26707—8x10 B. & L. R. R. in Century shutter.	\$9.50
26708—8x10 Rapid Rectilinear lens in barrel.	\$8.50
26709—8x10 Scientific Wide Angle in shutter.	\$10.00
26711—8x10 B. & L. Rapid Rectilinear in Automatic shutter	\$14.00

MORE LENS BARGAINS

Portrait Lenses



26712—8x10 Gundlach, convertible Rapid Rectilinear in Ilex General shutter.....	\$16.00
26713—8x10 B. & L. Zeiss Protar, Ser. 11A F:8 in Multispeed shutter	\$30.00
26714—8x10 B. & L. Ser. 11A Protar F:8 in Ilex Universal shutter	\$30.00
26715—8x10 Wollensak Extreme Wide Angle in bbl.....	\$18.50
26716—8x10 Wide Angle Velostigmat F:9.5 in bbl.....	\$55.00
26717—8x10 Wide Angle Velostigmat F:9.5 in Auto shutter	\$60.00
26719—8x10 Extreme Wide Angle F:16 in Auto shutter	\$30.25
26720—8x10 B. & L. Extreme Wide Angle, Ser. V F:18 in barrel	\$37.80
26721—8x10 80 degree F:16 Wide Angle in bbl.....	\$18.00
26722—10 1/4" Carl Zeiss Protar Ser. VIIa F:7 in bbl.....	\$160.00
26723—10 1/2" F:7.5 Ilex Anastigmat in bbl. with Iris diaphragm	\$27.25
26726—10x12 Wollensak Versar F:6 in Studio shutter	\$37.50
26727—10x12 B. & L. Extreme Wide Angle Ser. V F:18 in bbl.	\$47.70
26728—12" Goerz Dagor Anastigmat, Ser. III Dagor F:6.8 in bbl. like new.....	\$95.00
26729—12" Carl Zeiss 1C F:4.5 in bbl.....	\$180.00
26730—12" Aplanat F:8 in bbl.....	\$12.50
26731—12" Carl Zeiss 1C F:4.5 in sunk mount.....	\$189.00
26732—10x12 Wide Angle Scientific Anastigmat in rotary stop bbl.....	\$12.00
26733—10x12 B. & L. Zeiss Protar Wide Angle F:12.5 in Volute	\$40.00
26734—11 1/2" F:4 Verito in bbl.....	\$35.00
26735—12" F:6.3 Ilex Anastigmat in bbl. with Iris diaphragm	\$51.50
26736—12" Wollensak F:4.5 in Studio shutter.....	\$121.00
26737—12" Wollensak F:4.5 in regular shutter, speeds from 1 second to 1/100 of a second.....	\$125.00
26738—12" Tiertz Rapid Rectilinear in bbl. with Iris diaphragm	\$12.50
26739—12" B. & L. Tessar 1C F:4.5 in bbl.....	\$171.00
26740—12 1/4" Carl Zeiss Protar Ser. VIIa F:7 in bbl.....	\$220.00
26741—12 1/2" F:8 Rapid Symmetrical triple convertible in bbl. New.....	\$20.00
26743—13" B. & L. Process Anastigmat F:10 in bbl.....	\$60.00
26744—13" F:7.5 Ilex Anastigmat in bbl. with Iris diaphragm	\$36.00
26745—13 1/2" Carl Zeiss Protar Ser. VIIa F:6.3 in bbl.....	\$255.00
26746—14" Carl Zeiss Tessar Ser. 1C F:4.5 in bbl.....	\$275.00
26748—11x14 Wide Angle Velostigmat F:9.5 in Auto shutter	\$89.00
26749—11x14 Conley F:6 Anastigmat in Studio shutter	\$32.50
26750—11x14 B. & L. Extreme Wide Angle, Ser. V F:18 in bbl.....	\$59.40
26751—14 1/2" Carl Zeiss Protar Ser. VIIa F:7 in bbl.....	\$290.00
26752—14 1/2" F:4 Verito in Studio shutter.....	\$50.00
26753—15 3/4" Cooke Telar Ser. II F:7 actual bellows required 9/16"	\$45.00
26754—16" Carl Zeiss 1C F:4.5 in bbl.....	\$292.50
26755—16" Carl Zeiss Protar Ser. VIIa F:6.3 in bbl.....	\$320.00
26766—16" F:8 Rapid Symmetrical triple convertible in bbl. New.....	\$32.00
26767—14x17 Sterling Anastigmat F:6.3 in bbl. with Iris diaphragm	\$67.50
26768—17" Ross Telecentric F:5.4, bellows required 12"	\$160.00
26769—18 1/2" F:8 Rapid Symmetrical triple convertible in bbl. New.....	\$35.00
26770—20" Carl Zeiss 1C F:4.5 in bbl.....	\$419.50
26771—22" F:8 Rapid Symmetrical triple convertible in bbl. New.....	\$54.00
26772—22" Cooke Telar, bellows required 15", F:7.....	\$65.00
26773—Dallmeyer Grandac No. 1 consisting of 1A Dallmeyer F:4 lens with telephoto attachment making lens equivalent to 24" focus F:10 complete.....	\$150.00

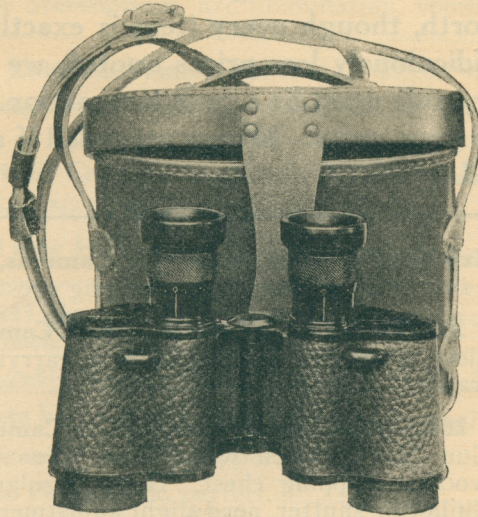
26774—26" F:8 Rapid Symmetrical triple convertible in bbl. New.....	\$70.00
26775—30" Goerz Dagor F:7.7, Ser. III in bbl.....	\$350.00
26776—6" Darlot Portrait.....	\$6.50
26776 1/2—6" F:5 Ilex Portrait lens with diffusion adjustment in barrel.....	\$16.00
26777—7" F:5 Ilex Portrait lens with diffusion adjustment in barrel.....	\$22.00
26778—5x7 Versar F:6 convertible in Regno shutter	\$12.00
26779—7 1/2" Verito in barrel.....	\$27.50
26781—8" Focus F:4 portrait lens in Studio shutter	\$6.00
26782—8 1/2" Verito in Studio shutter.....	\$34.50
26783—8 1/2" Verito in Auto shutter.....	\$37.50
26784—10" F:3.8 Ilex Portrait lens, a lens of the finest possible quality, made on the improved Petzval type and guaranteed to give perfect portraits. In Studio shutter	\$96.00
26787—10" F:5 Ilex Portrait lens with diffusion adjustment in Studio shutter.....	\$35.00
26788—10" Cetrum Portrait lens.....	\$15.00
26789—10" B. & L. Portrait lens, F:5 in Iris diaphragm combination barrel.....	\$125.00
26792—8x10 Darlot Portrait lens.....	\$12.00
26793—8x10 B. & L. Portrait lens in barrel with Iris diaphragm	\$15.00
26794—8x10 Serocco Portrait lens.....	\$22.50
26795—8x10 Cephaloscope F:5 in barrel, very fine.....	\$27.50
26797—8x10 B. & L. Rapid Rectilinear in Century shutter	\$9.50
26798—11 1/2" F:5 Ilex Portrait lens with diffusion adjustment in barrel.....	\$36.75
26799—11 1/2" F:5 Ilex Portrait lens with diffusion adjustment in Studio shutter.....	\$48.00
26801—11 1/2" Verito F:4 in Studio shutter.....	\$47.50
26802—12" Wollensak F:4.5 in regular shutter, speeds from one second to 1/100 of a second.....	\$125.00
26803—12" Wollensak F:4.5 in Studio shutter.....	\$121.00
26804—12" Tiertz Rapid Rectilinear in barrel with Iris diaphragm	\$12.50
26805—12" Voigtlander Portrait lens.....	\$
26806—12" Darlot Portrait lens.....	\$18.50
26809—10x12 Wollensak Versar F:6 in Studio shutter	\$37.50
26811—13" F:3.8 Ilex Portrait lens in Studio shutter	\$120.00
26812—11x14 Kohler Process lens with Waterhouse stops	\$15.00
26813—11x14 Conley F:6 Anastigmat in Studio shutter	\$32.50
26815—14" F:5 Ilex Portrait lens with diffusion adjustment in Studio shutter.....	\$53.00
26816—14 1/2" F:4 Verito in Studio shutter.....	\$50.00
26817—14 1/2" Verito in bbl. with Iris diaphragm.....	\$52.50
26820—16" F:3.8 Ilex Portrait lens, a choice item in Studio shutter	\$160.00

PRISM BINOCULARS

6 x 30 m. m.

ULTRA LUMINOUS GUNDLACH STEREO PRISM BINOCULARS

Each
Eye-Piece
Fitted
with
Special
Individual
Fog and Mist
Filter



Pupillary
Adjustment
Individual
Focus
with
Each
Eye-Piece

HIGHEST
POSSIBLE
AWARD

HIGHEST
POSSIBLE
AWARD

Accepted by Uncle Sam's Army

This remarkable 6x30 ultra-luminous Gundlach Manhattan Naval, day and night Prism Binocular, a recognized standard of the world. Special fog and mist filters in conjunction with its ultra luminous qualities enable its satisfactory use under the most adverse light conditions. The 30 m.m. objective admits 50% more light to the eye, and the 6-power magnification brings the object close enough for all types of work and enables careful study of the object under inspection. The only prism Binoculars having a field of vision of 145 yards at 1000 yards distance. Special micrometer focusing device for adjusting to the eyes insures absolute focus to each eye, individual pupillary adjustment for separation of eyes regulates same to fit the user perfectly. Binoculars are constructed in the world-famous optical works of the Gundlach Manhattan Optical Co. of Rochester, N. Y. Each glass fitted with fog and mist filter, complete with fine sole leather carrying case and strap.

26832—A \$65 Glass at the special net price of

\$37⁵⁰

USED BINOCULAR BARGAINS

26823—One lot of 8x24 Flamarion Paris, a very high grade French Glass, made of the best optical glass and constructed with the finest workmanship. Really a high grade instrument complete with fine leather carrying case. New, at\$32.50

26824—4X Fata-Morgana Stereo Prism Theater Binoculars, vest pocket size, with soft case\$22.50

26825—8x30 Hunalex, one of the best French Stereo Prism Binoculars manufactured, a substantial, finely made glass, which we highly recommend, complete with fine leather carrying case\$42.50

26826—8x30 Moreau Leigne, Stereo Prism Binoculars, specially light weight. Complete with leather case and straps.....\$30.00

26827—8x24 genuine Goerz Armees Trieder Stereo Prism Binoculars. Complete with leather case. Special\$32.50

26828—9x25 Hensoldt Stereo Prism Binoculars, complete with case and strap.....\$25.00

26829—8x25 Bausch & Lomb Zeiss Stereo Prism Binoculars, complete with carrying case.....\$32.50

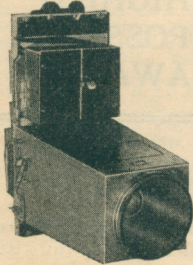
26830—6x30 B. & L. Zeiss Prism Binocular, with case.....\$40.00

ODDS and ENDS

Just what the heading implies—Odds and Ends, that accumulated through the summer, being sold with absolute disregard of their intrinsic worth, though every item is exactly as represented, because of the ridiculously low prices quoted, we cannot allow ten days' trial. Every sale must be a cash transaction. Take your pick quick and send in your order. Money refunded if article quoted has already been sold.

26833—One lot 4x5 Type C Government Air Cameras, no lens, Thornton Pickard Focalplane shutter, two magazines, carrying chest. **Special.....\$17.50**

26834—One lot, all metal Type E Cameras as above, complete with two magazines and carrying chest, as illustrated**\$22.50**



26835—One lot Government Gun Cameras, Lewis Machine Gun Model, fitted with 10½" focus Rectilinear lens in wooden shipping chest. Takes regular No. 120 roll film. Guillotine shutter, need slight adjustment. **Special.....\$14.50**

26836—200 No. 2 Crown Tilting Tops, brand new, list price \$3.30; net.....**\$1.10**

26837—600 4x5 brand new Graphic holders. List \$2.00; **Special\$1.15**

26838—One lot 7x10 loose leaf album, imitation leather cover; \$1.50 value. Each, **Special97c**

26839—One Brieloff Home Portrait Reflector, with 1000 Watt blue daylight Mazda bulb; practically new. List \$46.75. **Net.....\$32.00**

26840—No. 0 Graphic Enlarger, poor condition.....**\$9.00**

26842—One Wold Air Brush, like new. List \$30.00. **Net.....\$17.00**

26843—One Thayer and Chandler Air Brush. List \$25.00. **Net.....\$14.00**

26844—4¼x6½ 4A Speed Kodak, Focalplane, R. R. lens.....**\$22.00**

26849—One lot 3¼x5½ Seneca Plate Cameras, R. R. lens, Automatic shutter, 2 plate holders. Focusing panel. Each, **Special.....\$5.75**

26850—One pair 10" condensers in metal mount; perfect.....**\$20.00**

26851—One pair 14" condensers, unmounted. List \$110.00. **Net.....\$65.00**

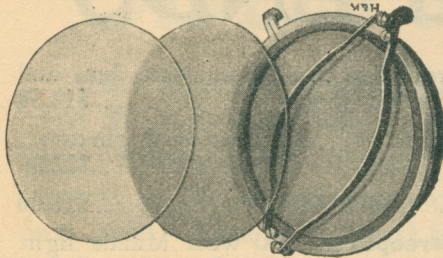
26852—One lot 6½" condensing lenses, mounted in wood with ground glass. List, pair, \$20.00. Pair, **Special.....\$10.00**

26853—One lot French Army Stereopticons, 6½" condensers, socket for standard Mogul base Mazda lamps with lens. Make perfect enlargers. Each**\$20.00**

ODDS and ENDS

- 26854—One Bondopticon Stereopticon Projector, arc illumination, lens and condensers. Can readily be used for enlarger or slides.....**\$17.50**
- 26855—One Victor Stereopticon, arc illumination, complete with rheostat, condensers and lens.....**\$22.00**
- 26856—One No. 1 Eastman Printer, 8x10. List \$30.00. Net.....**\$18.00**
- 26857—One suitcase model traveling Stereopticon, 400 watt Mazda light with lens**\$14.00**
- 26858—14x17 Portrait Camera, fair condition, one holder.....**\$20.00**
- 26859—8x10 Century No. 3 Portrait Camera, 3 holders; no lens.....**\$15.00**
- 26860—One brand new Halldorson Triangle Flash Bag. List \$35.00. Save 20%. Net**\$28.00**
- 26861—2 New 14x17 Empire State View Cameras, case, one holder. List \$120.00 each. Net, each.....**\$45.00**
- 26862—One lot 4 $\frac{1}{4}$ x6 $\frac{1}{2}$ Seneca Plate Holders. Each, Special.....**45c**
- 26863—One lot plate backs for 3A Kodak, focusing panel plate holder...**\$2.50**
- 26864—6 $\frac{1}{2}$ x8 $\frac{1}{2}$ Ingento Plate Tank, perfect.....**\$4.25**
- 26865—5x7 Ingento Plate Tank, perfect.....**\$3.00**
- 26866—5x7 Eastman Plate Tank, like new.....**\$3.50**
- 26867—4x5 Ingento Plate Tank, perfect.....**\$2.00**
- 26868—2 complete Movette Motion Picture outfits and Projectors, just like new. List \$150.00 each. Our net price, per outfit.....**\$50.00**
- 26869—One lot 7" Kodak Roll Film Tanks, complete, each.....**\$4.00**
- 26870—One lot Brownie Developing Tanks, all perfect, complete, each...**75c**
- 26871—Final clearance Ardel Developer tubes, large tubes of universal developer. 15 for.....**25c**
- 26872—One lot 4 oz. bottles Ingento Black Mat Varnish for lens tubes inside of cameras, etc. List 25c. Net.....**15c**
- 26873—4000 3 $\frac{1}{4}$ x4 $\frac{1}{4}$ mounts, black and gray, 25 to a package. Per pkg...**6c**
- 26874—2000 2 $\frac{1}{2}$ x4 $\frac{1}{4}$ black, gray and brown card mounts, 12 to package, 6 packages for.....**25c**
- 26875—One lot 16-oz. fluted glass funnels. List 60c. Net.....**30c**
- 26876—Lot $\frac{1}{2}$ gross pkgs. 4x6 Haloid Linen Buff. Per box, Special.....**80c**
- 26877—One lot 8x10 P. O. P. proof paper, glossy, one gross box.....**\$2.00**
- 26878—One lot 5x7 P. O. P. proof paper, glossy, one gross box **\$1.25**
- 26879—One lot 4x6 P. O. P. proof paper, glossy or matt, one gross box...**97c**
- 26880—Clearance of 1 oz. bottles Bass Anchor Metol. Per oz.....**40c**
- 26881—1202 - 1 7/16" diameter B. & J. Supplementary lens, telephoto portrait attachment and color filters. Each, Special.....**16c**
- 26882—One lot $\frac{7}{8}$ " diameter enlarging and copying lenses. Each.....**24c**

BASS SELECTED ACCESSORIES



Barre Color Filters

The most convenient and practical color filter ever made, consisting of three screens made of optically flat glass, colors, light, medium and dark, increasing the exposure 2, 4 and 6 times respectively when used with orthochromatic or other color sensitive plates, or increasing exposure 3, 6 and 10 times when used with regular plates. When not in use all three screens can be carried in holder by means of threaded color ring and an ingenious spring catch, by means of which the screen is instantly fastened to the lens without scratching or injuring lens mount.

PRICES

For lenses up to $\frac{3}{4}$ diam.....	\$2.00	For lenses up to $1\frac{1}{8}$ diam.....	\$3.25
For lenses up to $1\frac{3}{8}$ diam.....	2.25	For lenses up to 3 diam.....	4.75
For lenses up to $1\frac{3}{8}$ diam.....	2.75		

Probus Oil Colors

Set consists of ten ready mixed colors, brown, crimson, purple, flesh, vermillion, sky blue, yellow ochre, foliage green, burnt sienna and light yellow, allowing the mixture of any possible hue. Complete, containing ten colors in individual pans with color sticks and complete instructions. List \$1.25. Our special price, postpaid.....

89c

Agfa Flash Guns

Newly imported, the genuine Agfa Flash Gun eliminates the need for caps, and is absolutely positive to ignite at each shot. Good-bye flashlight troubles, wind spring and press button. The Agfa has eliminated them all. Large pan which folds up to fit in pocket, takes sufficient powder for any ordinary work. Price.....

\$2.00

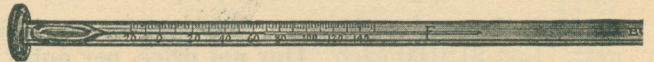
Victor or Newco Flash Powder

Are especially chemically prepared to give the most illumination with the least powder and trouble. It surpasses all other brands in quality and is supplied in three grades, normal, soft, and extra fast.

PRICES

$\frac{1}{2}$ ounce, net weight, per bottle.....	\$0.50
1 ounce, net weight, per bottle.....	.85
2 ounces, net weight, per bottle.....	1.65

Thermometers



Stirring Rod Thermometers

A high grade imported thermometer, 10" long, with crusher end. A \$1.00 value at.....

.67c

Tray Thermometers

A direct importation of Ideal tray thermometers, special fine quality and adjustable direct to side of tray. 75c value at.....

.35c

Harvey Exposure Meter

The accurate meter simply operated and giving the correct exposure at any time of the day, indoors or outdoors, on any part of the earth, carefully detailed, and now is supplied complete with a book—No. 40—for automatic plate development, plate speeds, and complete instructions on exposure in general. List price, \$2.00. Our special price.....

\$1.75

Motion Picture Model, \$2.00

Direct View Finders

Readily mounted on any camera with either 4 screws for permanent mounting or 2 screws for detachable mounting. Glass has rear centering lens, both vertical and horizontal. Special aligning post is also mounted directly on finder. A brilliant, erect image is shown, and enables operator to hold camera on level of eyes, the correct plane for proper perspective.

PRICES

$2\frac{1}{4} \times 3\frac{1}{4}$	\$1.00	$3\frac{1}{4} \times 5\frac{1}{2}$	\$2.50
$3\frac{1}{4} \times 4\frac{1}{4}$	1.50	5x7	3.00
4 x 5	2.00		

AZOL

The Active Developer

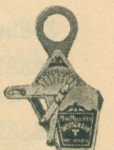
Needs the addition of water only to answer every requirement of the most exacting worker, and has proved to be suitable alike for all grades of plate films, bromide and gaslight papers and lantern slides. No chemical fog is possible with Azol. Every negative developed with it can readily be reduced or intensified, as conditions warrant, because of this fact. Comes in air-tight 4-oz. bottles. Price, per bottle.....

70c

Macmillan's Distograph

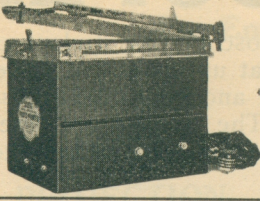
At last! No more out-of-focus pictures. The Macmillan's Distograph does away with them. Government tests prove it absolutely correct. Quickly put into action by simply holding to the eye and sighting object. The rest is purely automatic, and the distance is given you as accurately as though you used a tape measure. List price \$1.50. Bass Special

\$1.15



EACH ITEM CAREFULLY CHOSEN

R. W. K. Photo Printer



Takes negatives up to $6\frac{1}{2} \times 8\frac{1}{2}$. All metal and very compact, outside measurements being only $8\frac{3}{4} \times 7\frac{3}{4} \times 11\frac{1}{4}$ " over all projections. Has compensating spring hinge for pressure plate, which automatically accommodates itself to the thickness of the negatives, masks, etc., and provides equal pressure, assuring uniform contact. Comes complete with cord, socket and bulb, also special ground glass light diffusing screen built in, at the net price of..... **\$8.50**

Bass Recommends the R. W. K. Printer

Frosted Ruby and Orange Electric Bulbs

Made of frosted colored glass and absolutely cannot leak white light. Bulbs are tipless and absolutely safe. Bass tested and guaranteed. \$1.00 value at..... **52c**

Developing Outfits

Complete developing outfits, containing all necessary equipment for doing your own developing and printing. Outfits are of a high grade material and good results are assured.

Style A consists of 3 developing trays, one ruby candle lamp, one printing frame and glass, 2 tubes M. Q. developer, one pkg. Rexo mounting corners, one A B C of Photography, 1/2-lb. box Acid Hypo, one doz. developing paper and one 4 oz. measuring glass. Price..... \$2.25

Style B consists of 3 developing trays, one photo album, one printing frame and glass, one box Rexo M. Q. tubes, 1/2 lb. Acid Hypo, one pkg. mounting corners, one sepaline tablets, one ruby candle lamp, one doz. developing paper, one 4 oz. measuring glass, one doz. postal cards, and one A B C of Photography. Price..... \$2.70

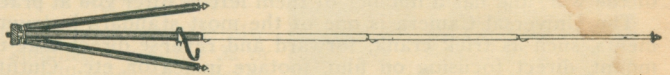
The above outfits are assembled to do work $3\frac{1}{4} \times 5\frac{1}{2}$, 4×5 , or smaller

Probus Enamel

A preservative paint or varnish manufactured especially for photographic purposes. Cannot affect the most sensitive solution, and is impervious to the action of any of the chemicals used in photography. Applied to wood, fibre, tin or iron, it renders the material proof against water, acid, alkali and rust. Used as paint for shelves and floors it means a clean, dry dark room.

Half pint trial tin sells for.....	\$ 0.45
Pint80
Quart	1.25
Half Gal.	2.05
One Gallon	3.75
Five Gallons	15.75

Metal Tripods



A direct import of all brass finely black enameled, double spring catch metal tripods, enables our offering them at more than 40% from existing lists, not mentioning the better quality tripod.

3 Section Telescoping Metal Tripod.....	\$2.25
4 Section Telescoping Metal Tripod.....	3.25
5 Section Telescoping Metal Tripod.....	3.75

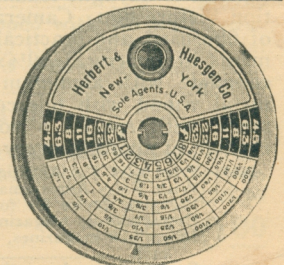
Victor Interval Timer Clocks

Timer is adjustable to ring at any period, ranging from five seconds to two hours; is indispensable for tank developing. You cannot go to sleep on the job with the Victor Timer there to warn you in time. Is especially valuable for use with Autochromes when perfect development is essential. Size a little smaller than an ordinary alarm clock, and finely finished. Price, each..... **\$4.50**

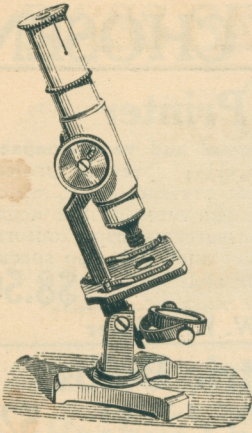
Heydes Photo Meter

A true light-measuring device which actually measures the actinic value of existing light conditions. This new model, in which the meter has been greatly simplified, is vest pocket size, and doubtless the finest and most accurate instrument of this kind ever made. It measures the shadows.

List price, \$10.00. **Special..... \$4.75**



NEW IMPORT OF STUDENT MICROSCOPES



A superb lot of fine quality microscopes for student use and microphotographic purposes at unthought of prices. Each glass is complete with case and guaranteed absolutely first-class merchandise. The 'scopes are finely finished and carefully adjusted. Only Bass offers such values. Order now.

No. 301. Microscope of exceptional durability, with a heavy japanned base and tilting staff; 2¼ inch square stage equipped with steel spring clips; 3 interchangeable objectives, magnifying 30, 50 and 70X; focused by slide adjustment. Height over all 7¼ inches. Complete in a cherry wood box with extra glass, specimens and forceps. Price each \$11⁰⁰

No. 302. Light weight yet sturdy microscope with single wheel adjustment and tilting staff embodying all the characteristics of the high priced microscopes; magnifying 30, 50 and 70X; 3 detachable achromatic objectives. Stage 2x1¼ inch with steel clips for holding specimens. Height 8 in. Complete in a cherrywood box with extra glass, specimens and forceps. Price..... \$12²⁵

No. 303. Microscope. Similar to No. 302 but with a single wheel adjustment; excellent workmanship and construction throughout. Tilting staff with a heavy horseshoe base, 2¾ in. square japanned stage with spring clips for holding slides. Reflecting mirror and three detachable objectives magnifying 60, 90 and 110. Height 9¼ in. A very serviceable microscope for any purpose. Price, each \$18⁰⁰

Complete Line of Spencer Microscopes and Laboratory Equipment

MOTION PICTURE CAMERAS

Bass has the largest stock of Motion Picture Cameras and Apparatus in the World. We have supplied most of the Universities in the country. Motion Picture Catalog No. 5 on request.

Liberty War Model Universal

Bass purchased the complete government surplus of this special outfit at the termination of the war, and has a number of them left to offer you at practically 50% of their actual value.

The Universal Camera is one of the most standard instruments in use today, has all adjustments, such as trick crank, forward and reverse direct take-up, F:3.5 Tessar lens in focusing mount, direct focusing on film, footage indicator, etc. Outfit is finished in special olive drab and complete as follows:

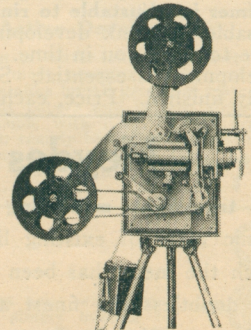
Camera with six 400 ft. all aluminum special light weight magazines, carrying case for extra magazines, carrying case for camera and carrying trunk to take entire outfit. Cameras are new, each one bears the O. K. of Charles Bass, which means that every instrument is capable of turning out good pictures, equal to those of any camera made.

- 26885—List price, \$840. Bass special price..... \$450.00
- 26886—Precision Ball Bearing Tripod..... 165.00
- 26887—Universal panoram and tilting top tripod..... 108.00

Home and Topical De Franne

In the Home and Topical Model De Franne we have succeeded in perfecting a complete Motion Picture outfit for both taking and projecting of professional quality pictures and at a lesser cost than ever has been supposed possible. **You can make perfect Motion Pictures with this outfit.** Camera is daylight loading, takes 100 feet of standard Motion Picture film. Camera has film meter, indicating amount of film used, and practically no variation. Outside measurements of camera 7½x9½x3¾. Weighs 6 lbs. 13 oz. Comes complete with aluminum covered screen 30x36 inches, all metal tripod with telescoping legs, and projection attachment, with special 6 volt Mazda lamp, condensers, etc., capable of showing every detail on the screen.

- 26889—Price with F:6 Anastigmat lens..... \$ 97.50
- With F:3.5 Anastigmat lens..... 125.00
- Focusing device for focusing on film, extra..... 10.00
- Extra take-up magazines, each..... 2.00
- Extra film magazines, loaded with 100 ft. of negative film, each..... 5.00
- Carrying case for entire outfit..... 15.00



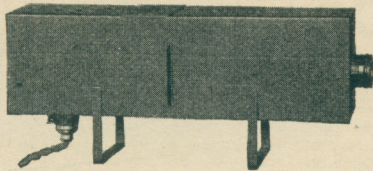
READY FOR ACTION AS A PROJECTOR

PROJECTION APPARATUS

The Home Delineascope

For Enlarging and Lantern Slide Projection

LANTERN
SLIDE
PROJECTION



BROMIDE
ENLARGING

The new Spencer Home Delineascope will project pictures up to 6 feet in size when equipped with 110 watt bulb, or up to 8 feet in size with 250 watt bulb. Condensing lenses are full size, standard diameter $4\frac{1}{8}$ ". Standard slide carrier supplied and non-standard if specified. Delineascope measures $18 \times 4\frac{3}{4} \times 7\frac{3}{4}$ " over all and weighs 6 lbs. Never before has a high grade instrument of this type been sold for so little money. The Delineascope is indeed a real bargain at its present cost, which is definitely guaranteed.

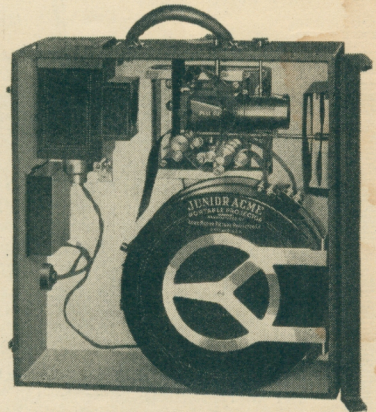
PRICE

- 26888—Home Delineascope, regular equipment, 110 watt bulb, 10 ft. cord, attachment plug \$25.00
 26889—Home Delineascope, 250 watt bulb, 10 ft. cord, attachment plug \$26.50
 26890—Set of accessories for making Bromide enlargements. Consists of 12x15 Bromide easel, R. R. lens, F:8 in mount, holder for negatives and extra housing to make lamp enclosure light tight..... \$15.00

Complete Delineascope or Spencer Microscope Catalog to All Interested

ACME Motion Picture Projector

The Acme is absolutely the most reliable portable Motion Picture Projector. Can be supplied for either 32 or 110 volt current. Either equipment will work on direct or alternating current without any change whatever, the motor being universal. Current can be taken from any ordinary lamp socket. When you buy an Acme you get a complete machine in every detail, including waterproof outside cover, empty reel, slide carrier, 150 ft. cord with plug. Anyone, even a laymen, can thread an Acme in one minute or less. Any model Acme is absolutely fireproof, the film being loaded into special enclosed metal containers. Will pass inspection anywhere.



MODELS

ACME MODEL 11

- 26891—Acme Jr., for home, office and schoolroom use. $17 \times 18 \times 7\frac{1}{4}$ inches, weighs only 22 lbs. Projects up to about 35 feet from screen, and throws a picture about 6x8 feet. Standard 250 watt nitrogen lamp, and is absolutely fireproof. Price \$165.00
 26892—Acme Model 11. $17 \times 18 \times 7\frac{1}{2}$ inches. Weight 25 lbs. Equipped with 400 watt nitrogen bulb, and projects up to 75 feet from screen, giving a picture up to 10x12 feet. Special fire shutter and miniature pilot lamp to enable quick threading are special features. Also direct ventilation with fan through top of projector. Price \$200.00

Bass Recommends the Acme 11 for All-Around Use

- 26893—Acme Model 14. Same as Model 11, but takes a 1000 watt bulb and projects either motion picture or lantern slides. Dimensions, $20 \times 24 \times 8$ inches; weighs 35 lbs. Will project up to 100 or 110 feet, throw any size picture desired. Price \$275.00

S. V. E. Model. Same as No. 14, but made of aluminum.

Price

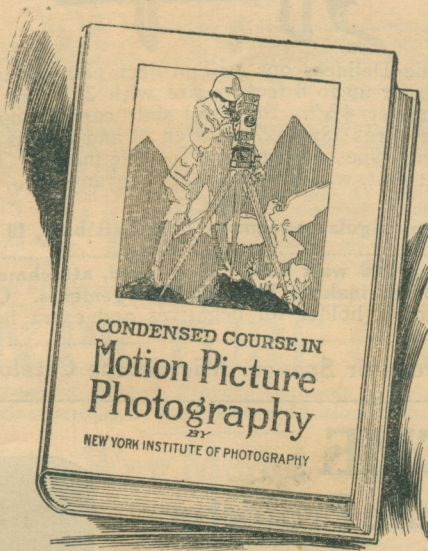
\$350.00

CONDENSED COURSE

IN

Motion Picture Photography

An elegantly illustrated finely bound volume of 382 pages. Describes minutely every phase of Motion Picture photography, dealing thoroughly with each subject and question that may arise.



Not even the smallest detail of double exposure, trick or dissolve work has been omitted. Every detail is carefully described. A complete school- at.....\$6.00

Postage 20c

BEHIND THE MOTION PICTURE SCREEN.—Only a few copies still obtainable. Chock full of valuable information on Motion Photography. Price, postpaid...\$3.50

ANIMATED CARTOONS.—Correct cranking, drawing, how to equalize the animation, in fact, all the tricks known to this highly interesting phase of the work. Finely bound and thoroughly illustrated. Price, postpaid...\$3.10

SATURDAY WITH MY CAMERA.—A popular and practical guide to the work of the amateur at every season of the year. The book outlines the method of spending week ends with the camera. 450 pages, lavishly illustrated, finely bound. Postpaid.....\$2.10

FUNDAMENTALS OF PHOTOGRAPHY.—An Eastman product, dealing thoroughly with the fundamentals in question. Price, postpaid.....\$1.00

WATKINS' MANUAL.—Noted for giving tables, formulae, illustrations of negatives and prints, giving comparative exposures and developing examples. Cloth covered. Price. 75c

COMMERCIAL PHOTOGRAPHY.—A well bound, finely illustrated publication, delving deeply into all phases of professional photography, complete in all details. Price\$4.00

OPTICS OF PHOTOGRAPHY.—Giving formulae and laws of photographic optics. Absolute authority. Well bound and illustrated. Price.....\$2.50

PHOTOGRAPHIC CHEMISTRY.—Describing definitely every combination and action of chemistry as used for photographic purposes. Finely bound.....\$2.50

BROMIDE PRINTING AND ENLARGING. The Photo Miniature. Cloth bound. A special lot at.....19c

DEVELOPERS AND DEVELOPMENT.—The Photo Miniature. Cloth bound. A special lot at.....19c

HOW TO USE AND CHOOSE A LENS.—A handbook of imperative value to every photographic amateur or professional. Price50c

HOW TO MAKE GOOD PICTURES.—An Eastman publication, noted for its simple manner of address so as to be readily understood in every detail. Price.....40c