

HAWK=EYES

MANUFACTURED BY
BLAIR CAMERA CO.
ROCHESTER, N. Y.

THE increasing popularity of the Hawk-Eye demonstrates beyond a doubt that the camera that best meets the demand of the present time is one that is compact, convenient to carry, safely loaded in broad daylight, and uses both plates and roll film.

It has always been our aim to lead in making improvements. Since moving into our new factory, which is fully equipped with the most modern machinery, we have facilities for manufacturing in larger quantities than heretofore, which enables us to offer to the public, at a moderate price, cameras of the highest grade. We employ the most skilled workmen, we use the best material obtainable and can guarantee that everything will be found as represented.

We take this opportunity to thank our patrons for past favors and sincerely hope that our future relations may prove even more pleasant than in the past.

Very respectfully,

BLAIR CAMERA CO.

Rochester, N. Y.

PERFORATED

DAYLIGHT LOADING FILM.

The films for the Hawk-Eye are put up in such a manner that it is impossible for the light to reach the sensitive surface of the material. Attached to each end of the film is a strip of black paper of sufficient length that when wound upon the spool the light is excluded, which allows the loading and unloading of the camera in broad daylight.

Perforations are made in the film at regular intervals which engage a detent connected with an ingenious registering device upon the Hawk-Eye. This records the exposure, and, at the same time, moves an automatic tally which shows at a glance just the number of exposures made. In cutting up the film for development, it is impossible to make an error as the perforations mark the division between each exposure.

It has been customary heretofore to provide a strip of black paper running the entire length of the film. This, when wound upon the spool, necessitates a bulky roll besides the possibility of damaging the material owing to the impurities of the paper affecting the sensitive coating, and the imprint being visible upon the negative if kept any length of time before development. By adopting our system these difficulties are entirely overcome, as the paper does not touch the sensitive surface at all, and owing to the omission of paper, a roll containing a corresponding quantity is a trifle more than one-half of the usual size and weight. The limited space required in the camera as a receptacle for the Perforated Daylight Loading Film, permits us to make the Hawk-Eyes the smallest cameras in existence.

LENSES.

All lenses used in the Hawk-Eye are of the finest quality obtainable, strictly achromatic, and guaranteed to produce sharpness to the extreme corners. Each lens is carefully tested and tried before leaving the factory.

SHUTTERS.

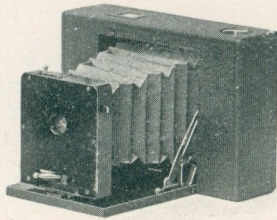
All Hawk-Eyes are furnished with shutters adapted for both time and instantaneous work. In making snap-shots the speed can be regulated as required. Stops are also provided. This allows properly timed negatives at all seasons of the year under varying conditions.

GUIDE BOOKS.

With each Hawk-Eye a book of instructions is included, which explains all about loading and unloading ; how to make exposures, either instantaneous, time or flash-light, and how to develop and finish the picture. By following these instructions, success can be expected from the start.

SAMPLE PHOTOGRAPHS.

Should the prospective purchaser desire to examine a picture showing the work of any Hawk-Eye we describe on the following pages, we will be glad to submit the same upon receipt of stamps to cover the cost of postage and packing. 4 x 5 or smaller, 4 cents, 5 x 7, 8 cents.



THE TOURIST HAWK-EYE.

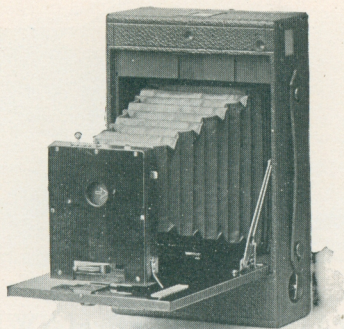
Dimensions, $1\frac{1}{2}$ x $4\frac{1}{2}$ x $6\frac{1}{2}$ inches. Weight, 15 oz. Size of Photo, $3\frac{1}{2}$ x $3\frac{1}{2}$ inches. Capacity, 12 exposures.

This Hawk-Eye is especially adapted for the cyclist and traveller, who require an instrument of the smallest dimensions possible, so constructed that it can be carried in the pocket or satchel. The lens is the latest improved achromatic of a fixed focus of $4\frac{1}{8}$ inches, and guaranteed to cover the field under any condition. It is mounted in such a manner that it can be removed and replaced by any one without danger of altering the focus.

The speed of the Shutter can be regulated, in accordance with the strength of light, when making "Snap Shots" and one pressure on a small lever is all that is required. For a time exposure, one pressure on another lever opens the shutter and a second pressure closes it. A set of three stops is also provided and the finder is extra brilliant, showing the object very plainly. If at any time it is found desirable to use glass plates, an attachment can be furnished which fits interchangeably with the back cover of the camera.

The wood parts are of selected mahogany, highly polished. The trimmings of lacquered brass. By adopting our Perforated Daylight Loading Film System in this Hawk-Eye, we can offer the most compact daylight loading camera in existence.

<p>Tourist Hawk-Eye, not loaded, - \$9.00 Special Sunlight Film, 12 exposures, .60 Black Sole Leather Carrying Case, - 1.25 Plate Attachment, with Ground Glass and Holder, - - - 2.00</p>	<p>Extra Holders for Dry Plates, each, - - - - - \$.60 Dry Plates, per dozen, $3\frac{1}{4}$ x $3\frac{1}{4}$, - .35 Developing and Printing Outfit, - 1.00</p>
--	---



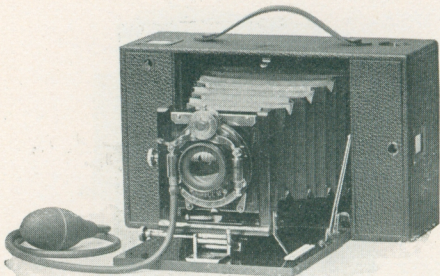
4 x 5 TOURIST HAWK-EYE.

Dimensions, 2 x 5½ x 8¾ inches. Weight, 25 oz. Size of Photo, 4 x 5 inches.
Capacity, 12 exposures.

For those who prefer a camera similar to that described on the preceding page, but capable of making a picture of larger dimensions of a rectangular form, we have designed the 4 x 5 Tourist Hawk-Eye. While this camera is necessarily of larger dimensions than will permit carrying in the ordinary pocket, it is by no means cumbersome, and is the smallest outfit in existence for the size of photograph produced. The lens is a single achromatic of superior quality, with a focus of 6⅞ inches. The shutter is of rotary design, fitted with different speed for instantaneous work, and a special device for making time exposures. A set of three stops for reducing or enlarging the size of the lens aperture, sockets for attaching the tripod, and both vertical and horizontal finders are provided. Being equipped with our Perforated Daylight Loading Film System and a back interchangeable with the plate attachment, makes this Hawk-Eye a very desirable outfit for all around use.

4 x 5 Tourist Hawk-Eye, - - -	\$15.00
Special Sunlight Film, 12 exposures,	
4 x 5, - - - - -	.85
Black Sole Leather Carrying Case,	1.50

Plate Attachment with Ground	
Glass and Holder, - - - -	\$2.50
Extra Plate Holders, each, - -	.75
Glass Dry Plates, per dozen, 4 x 5,	.65
Developing and Printing Outfit, -	1.50

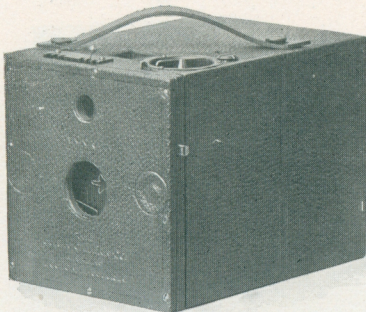


SPECIAL TOURIST HAWK-EYE.

Dimensions, 3 x 5½ x 8¾ inches. Weight, 2½ lbs. Size of Photo, 4 x 5 inches.
Capacity, 12 exposures.

This camera, in construction, finish, beauty and durability, is unsurpassed. The covering is of the best morocco finish leather, the wood parts of mahogany, French polish, and the trimmings of hand-finished lacquered brass. The lens is a high grade, double rapid rectilinear, of 6¼ inches focus, capable of doing first-class work either in-door or open air. This lens is fitted to a removable board, which allows any make of lens of ordinary focus to be adjusted without extra charge. The shutter is the latest improved Unicum, with iris diaphragm, and so constructed that by turning a small disc the speed can be regulated from $\frac{1}{100}$ of a second to any length of time required, and exposures can be made with rubber bulb or finger release. Two tripod plates, and both vertical and horizontal finders are provided. A desirable feature is the rack and pinion movement for fine focusing. The rising and falling front can be used to advantage for architectural work. This camera uses our Perforated Daylight Loading Film, and a dry plate attachment fits interchangeable with the back cover.

Special Tourist Hawk-Eye, - \$25.00 Special Tourist Hawk-Eye, no lens, 15.00 Special Sunlight Film, 12 exposures, 4 x 5, - - - - - .85 Black Sole Leather Carrying Case, 2.00		Plate Attachment with Ground Glass and Holder, - - - - \$2.50 Extra Plate Holders, each, - .75 Glass Dry Plates, per dozen, 4 x 5, .65 Developing and Printing Outfit, - 1.50
---	--	---



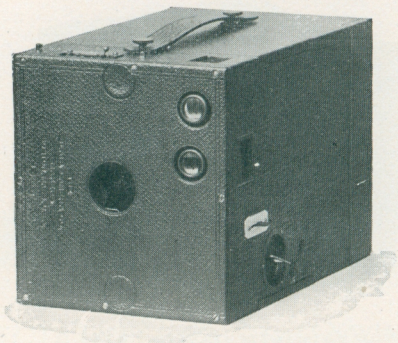
HAWK-EYE JR.

Dimensions, $4\frac{1}{4} \times 4\frac{1}{2} \times 6$ inches. Size of Photo, $3\frac{1}{2} \times 3\frac{1}{2}$ inches. Weight, 20 ounces. Capacity, 12 exposures.

Small dimensions without folding is a feature of this camera. Fitted with achromatic lens of $4\frac{1}{8}$ inch focus, socket for tripod use, latest design of shutter for time and instantaneous work, improved device for using Perforated Daylight Loading Film, and automatic tally for recording exposures. A brilliant square finder reflects the object distinctly. The covering is of the best grain leather, and everything pertaining to the camera is simple and easy to operate. Either film or glass plates can be used interchangeably without any attachment other than the plate holder.

The steady increase in the demand for this little Hawk-Eye since placing it upon the market a short time ago, is sufficient evidence to prove that it is a leader. Being constructed in a box form, and always in focus, it will be found a very desirable outfit and appreciated by those who require the very best but who prefer this style of camera, owing to its convenience in being always ready for making an exposure.

<table style="width: 100%; border-collapse: collapse;"> <tr> <td style="padding-right: 10px;">Hawk-Eye Jr., - - - -</td> <td style="text-align: right;">-\$8.00</td> </tr> <tr> <td style="padding-right: 10px;">Sunlight Film, 12 exposures, $3\frac{1}{2}$</td> <td style="text-align: right;">-</td> </tr> <tr> <td style="padding-right: 10px;">x $3\frac{1}{2}$, - - - -</td> <td style="text-align: right;">.60</td> </tr> <tr> <td style="padding-right: 10px;">Black Sole Leather Carrying Case, 1.25</td> <td style="text-align: right;">-</td> </tr> </table>	Hawk-Eye Jr., - - - -	-\$8.00	Sunlight Film, 12 exposures, $3\frac{1}{2}$	-	x $3\frac{1}{2}$, - - - -	.60	Black Sole Leather Carrying Case, 1.25	-	<table style="width: 100%; border-collapse: collapse;"> <tr> <td style="padding-right: 10px;">Double Holder for Glass Plates, $3\frac{1}{4}$</td> <td style="text-align: right;">-</td> </tr> <tr> <td style="padding-right: 10px;">x $3\frac{1}{4}$, - - - -</td> <td style="text-align: right;">-\$.60</td> </tr> <tr> <td style="padding-right: 10px;">Glass Plates, per doz., $3\frac{1}{4} \times 3\frac{1}{4}$, -</td> <td style="text-align: right;">.35</td> </tr> <tr> <td style="padding-right: 10px;">Developing and Printing Outfit, -</td> <td style="text-align: right;">1.00</td> </tr> </table>	Double Holder for Glass Plates, $3\frac{1}{4}$	-	x $3\frac{1}{4}$, - - - -	-\$.60	Glass Plates, per doz., $3\frac{1}{4} \times 3\frac{1}{4}$, -	.35	Developing and Printing Outfit, -	1.00
Hawk-Eye Jr., - - - -	-\$8.00																
Sunlight Film, 12 exposures, $3\frac{1}{2}$	-																
x $3\frac{1}{2}$, - - - -	.60																
Black Sole Leather Carrying Case, 1.25	-																
Double Holder for Glass Plates, $3\frac{1}{4}$	-																
x $3\frac{1}{4}$, - - - -	-\$.60																
Glass Plates, per doz., $3\frac{1}{4} \times 3\frac{1}{4}$, -	.35																
Developing and Printing Outfit, -	1.00																

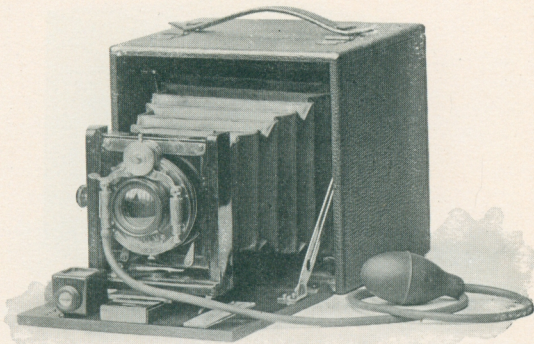


4 x 5 HAWK-EYE JR.

Dimensions, $5\frac{3}{4}$ x $6\frac{1}{4}$ x 9 inches. Weight, 2 lbs. 14 oz. Size of Photo, 4 x 5 inches. Capacity, 12 exposures.

The design of this camera is similar to that of the smaller Hawk-Eye Jr. It is constructed to meet the demand of those who desire a non-folding camera, making a picture, one of the most popular sizes, 4 x 5 inches. Our highest grade of achromatic lens, with a focal length of $6\frac{1}{8}$ inches, is fitted to this camera, and is arranged with a lever for focusing accurately on any object which always insures obtaining a clear, sharp negative. View finders, both horizontal and vertical; sockets for tripod; improved rotary shutter, time and instantaneous, with variations of speed; covered with selected morocco grain leather, and of construction for using our Perforated Daylight Loading Film, classes this Hawk-Eye among the favorites. The advantage of using either film or glass plates in a camera of this size must be considered, as it is often the case that one or two exposures are required for immediate development.

4 x 5 Hawk-Eye Jr.,	-	-	-	\$15.00	Double Holder for Glass Plates, 4 x 5, \$.75
Sunlight Film, 12 exposures, 4 x 5,				.85	Glass Plates, per doz., 4 x 5, -	.65
Black Sole Leather Carrying Case,				2.00	Developing and Printing Outfit,	- 1.50

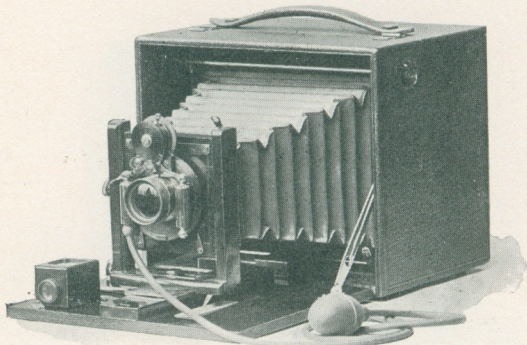


THE 4 x 5 SPECIAL FOLDING HAWK-EYE.

Dimensions, $5\frac{1}{2} \times 6 \times 6\frac{1}{4}$ inches. Weight, 2 lbs. 8 oz. Size of Photo, 4 x 5 inches. Capacity, 2 Double Plate Holders or 1 Roll Holder.

This Hawk-Eye will find favor among those desiring a strictly high-grade camera that can be adapted for use by the novice or those well skilled in the art. The wood parts are of mahogany, and the covering of the best morocco grain leather. Improved center swing back, rising and falling front, rack and pinion for fine focusing, and spring actuating ground glass are included. The lens is of the best, a double rapid rectilinear, fitted with improved Unicum shutter operated by bulb or finger release. Any lens of ordinary focus can be fitted without extra cost, as the front board is removable. Tripod sockets for both vertical and horizontal work are provided, and a reversible view finder is attached to the bed for centering the object in either position. As furnished, this Hawk-Eye is for use of glass plates, but if desirable to use roll film, a roll holder can be supplied that uses our Perforated Daylight Loading Film and fits interchangeably with the plate holder.

Special Folding Hawk-Eye, with one Plate Holder, no lens, -	\$15.00	Extra Plate Holders, each, -	-.75
With Double R. R. Lens and improved Unicum Shutter, -	25.00	Leather Carrying Case, with strap, -	2.25
		Hawk-Eye Roll Holder, -	5.00
		Sunlight Film, 12 exposures, 4 x 5, -	.85



THE 5 x 7 SPECIAL FOLDING HAWK-EYE.

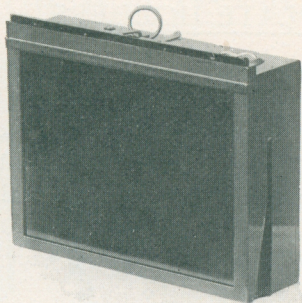
Dimensions, $6\frac{7}{8} \times 7\frac{1}{2} \times 8\frac{7}{8}$ inches. Weight, 5 lbs. 2 oz. Size of Photo, 5 x 7 inches. Capacity, 2 Double Plate Holders or 1 Roll Holder.

The strength of this combination from a photographic standpoint will be readily recognized. The beautiful finish and fine workmanship of camera, lens, and shutter, makes this the most desirable outfit for those who want the very best.

This Hawk-Eye is of extra fine hand finish throughout, the wood parts are of selected mahogany, French polish, and the leather covering of the finest grain. The lens is a special made rapid rectilinear of 8 inches focus, and guaranteed to produce the best of work, either interior or exterior. This lens is fitted with the Bausch & Lomb improved iris diaphragm shutter, which can be set for exposures of from 1-100 of a second to three seconds, and works automatically with great accuracy; also for longer exposures in the usual manner.

Similar to the Hawk-Eye described on the preceding page, the roll holder for Perforated Daylight Loading Film can be supplied, which is interchangeable with the plate holder.

5 x 7 Special Folding Hawk-Eye,	Extra Plate Holders, each,	-	\$1.25
with one Plate Holder, no lens, \$22.50	Sole Leather Carrying Case,	-	3.00
With Double R. R. Lens and B. &	Hawk-Eye Roll Holder,	-	6.50
L. Iris Diaphragm Shutter, -	Sunlight Film, 12 exposures, 5 x 7,	-	1.60
-			45.00



THE HAWK-EYE ROLL HOLDER.

This holder uses our Perforated Daylight Loading Film, and was originally designed for the Special Folding Hawk-Eyes. Owing to the great demand from those using former models of the Hawk-Eye, as well as cameras of other manufacture, we have decided to furnish roll holders for such cameras, and are now prepared to fit the same at a nominal charge. These holders are fitted with hard rubber slides and are placed in the cameras similar to the plate holder, bringing the film in the same position as the plate, so that the camera is in focus when using either.

The entire wood parts are of selected mahogany of beautiful finish, and the trimmings of lacquered brass. We recommend this Daylight Loading Roll Holder to those who own a plate camera, but who at times have realized how inconvenient it is to find, when going on a journey, that the weight and bulk of plates and holders required is of such incumbrance that there is no pleasure.

4 x 5 Hawk-Eye Roll Holder, -	\$5.00		4 inch Sunlight Film, 12 exposures, \$.85
5 x 7 Hawk-Eye Roll Holder, -	6.50		5 inch Sunlight Film, 12 exposures, 1.	60

PLATE HOLDERS.

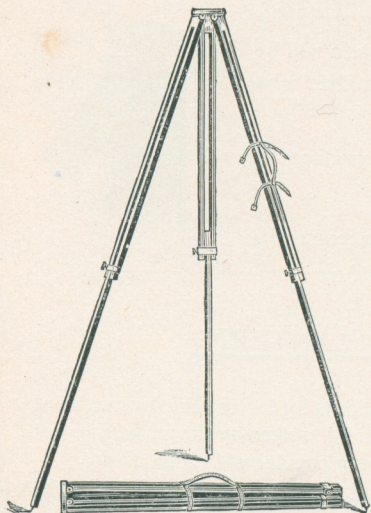
In ordering plate holders it is always best to mention the camera in which they are to be used, so as to avoid the possibility of delay or error. All holders are made of selected cherry, and the slides can be furnished either of water-proof card board, or hard rubber.

SIZE	WITH BOARD SLIDES	WITH RUBBER SLIDES	SIZE	WITH BOARD SLIDES	WITH RUBBER SLIDES
3¼ x 3¼	-.60	\$.85	6½ x 8½	\$1.60	\$2.00
3¼ x 4¼	.60	.85	8 x 10	1.85	2.40
4 x 5	.75	1.00	10 x 12	-	3.50
5 x 7	1.25	1.50	11 x 14	-	4.00
5 x 8	1.35	1.60			

SLIDES FOR HOLDERS.

SIZE	BOARD	POLISHED HARD RUBBER	SIZE	BOARD	POLISHED HARD RUBBER
3¼ x 3¼	\$.10	\$.15	6½ x 8½	\$.15	\$.30
3¼ x 4¼	.10	.15	8 x 10	.15	.40
4 x 5	.10	.20	10 x 12	.20	.50
5 x 7	.10	.25	11 x 14	.25	.55
5 x 8	.10	.25			

THE HUB TRIPOD.



This tripod is designed for use with cameras up to and including 5 x 7 inch in size. The wood used is straight-grain spruce, with shellac coating; the trimming of lacquered brass. The top is attached to the legs in such a manner that it is not necessary to remove when folding, which is an advantage, as the tripod is always ready for use.

The weight complete with head and screw is but 24 ounces.

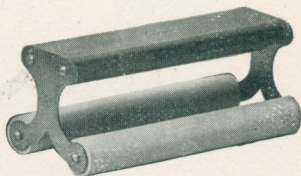
The length when extended can be made to vary from 30 to 54 inches. The length when folded is but 29½ inches.

Price, - - \$1.50

HAWK-EYE PRINT ROLLER.

Fitted with double rollers of the best rubber and very durable.

6 inch, - 50 cents.

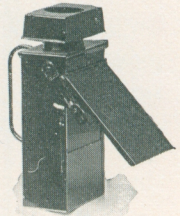


THE BABY LANTERN.

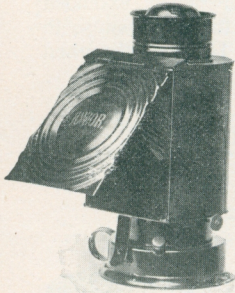
While not capable of producing as strong a light as the larger sizes, this lantern will be found very convenient for the amateur who does the finishing at home.

It is very small in size and produces a safe light.

Price, - - 60 cents.



THE JUNIOR LANTERN.



The Junior is by far the most convenient moderate priced lantern on the market, and is becoming very popular with amateurs.

It requires no more care and is as easily manipulated as an ordinary hand lamp. The flame is regulated from the outside and gives a clear, steady light, perfectly safe and efficient for the dark room. The cover lowers from the top, remaining in any position in which it is placed, and serves for a reflector as well as a shade for the eyes. This lantern has space for both orange and ruby glass, which are included, but they can be replaced with other colors if required.

Price, - - - - - - \$1.00

PRINTING FRAMES.

$3\frac{1}{4} \times 4\frac{1}{4}$	\$.36
4×5	.38
$4\frac{1}{4} \times 5\frac{1}{2}$.40
$4\frac{1}{4} \times 6\frac{1}{2}$.42
5×7	.50
5×8	\$.52
$6\frac{1}{2} \times 8\frac{1}{2}$.60
8×10	.75
10×12	1.00

SPECIAL PRINTING FRAMES.

(Extra Light Weight.)

$3\frac{1}{4} \times 3\frac{1}{4}$	\$.25
$3\frac{1}{2} \times 3\frac{1}{2}$.25
4×5	.25

HAWK-EYE DEVELOPING TRAYS.

These Trays are light in weight, tough and strong, and are not affected by the action of chemicals; are easily kept clean, have ridges on the bottom and we recommend them for amateurs' use.

$3\frac{1}{4} \times 4\frac{1}{4}$	\$.20
4×5	.25
5×8	.50

POLISHED RUBBER TRAYS.

The indentations permit the finger to be inserted freely under the plate without any danger of scratching.

4 x 5	.35	6½ x 8½	.85
5 x 8	.65	8 x 10	1.25

HARD RUBBER DEVELOPING TRAYS.

Of the best quality of hard rubber, with bound corners and a lip for pouring. They are a superior article.

4 x 5,	.55	8 x 10,	\$1.25
5 x 8,	.80	10 x 12,	1.85
6½ x 8½,	.95		

CARRYING CASES.

Made of black sole leather, including shoulder strap, and first-class in every way.

3½ x 3½ Tourist Hawk-Eye,	\$1.25
4 x 5 Tourist Hawk-Eye,	1.50
4 x 5 Special Tourist Hawk-Eye,	2.00
3½ x 3½ Hawk-Eye Jr.,	1.25
4 x 5 Hawk-Eye Jr.,	2.00
4 x 5 Special Folding Hawk-Eye,	2.00
5 x 7 Special Folding Hawk-Eye,	3.00

HAWK-EYE MOUNTING PASTE.

We furnish a paste especially prepared for mounting photographs, that will not sour, discolor, mold or separate. It will keep indefinitely.

½ Pint Jars, - - - - - \$.25

HUB DEVELOPING POWDERS.

These powders are carefully compounded and those using them can feel assured of obtaining the best of results. We recommend them for the development of our Sunlight Film. Each package will make 4 ounces.

Price, - - - - - 50 cents per dozen.

GLASS DRY PLATES.

Very rapid for instantaneous work.

3¼ x 3¼, - - - - -	\$.35	4 x 5, - - - - -	\$.65
3¼ x 3½, - - - - -	.35	5 x 7, - - - - -	1.10
3¼ x 4¼, - - - - -	.35		

PERFORATED DAYLIGHT LOADING FILM.

2	in.,	12 exposures,	2 x 2½ for Baby Hawk-Eye,	-	-	-	\$.40
3½	"	12	3½ x 3½ for Tourist Hawk-Eye,	-	-	-	.60
3½	"	12	3½ x 3½ for Hawk-Eye Jr.,	-	-	-	.60
4	"	12	4 x 5 for Tourist Hawk-Eye,	-	-	-	.85
4	"	12	4 x 5 for Hawk-Eye Jr. or 4 x 5 Roll Holder,	-	-	-	.85
5	"	12	5 x 7 for Hawk-Eye Roll Holder,	-	-	-	1.60

ROLL FILM.

(Not perforated).

3¼ in.,	25 exposures,	3¼ x 3¼,	-	\$1.20	5 in.,	25 exposures,	5 x 7,	-	\$3.00
3¼ "	50	3¼ x 4¼,	-	2.40	5 "	50	5 x 7,	-	6.00
3¾ "	25	3½ x 3½,	-	1.10	5¼ "	25	5 x 7,	-	3.00
3¾ "	50	3½ x 3½,	-	2.20	5¼ "	50	5 x 7,	-	6.00
4 "	25	4 x 5,	-	1.65	6½ "	25	6½ x 8½,	-	4.40
4 "	50	4 x 5,	-	3.30	6½ "	50	6½ x 8½,	-	8.80
4¼ "	25	4 x 5,	-	1.65	8½ "	25	8½ x 6½,	-	4.40
4¼ "	50	4 x 5,	-	3.30	8½ "	50	8½ x 6½,	-	8.80

When ordering film always state in what camera it is to be used.

TONING SOLUTION.

(Concentrated).

12 oz. Bottle, - - - - - \$.50

HARDENER.

12 oz. Bottle, \$.50

KLORO PRINTING OUT PAPER.

Brilliant high lights, silky half tones, rich transparent shadows.

				½ GROSS.	GROSS.
3½ x 3½,	2 doz.,	-	\$.20		\$1.15
4 x 5,	2 "	-	.25		1.25
5 x 7,	1 "	-	.30	\$1.60	2.65
5 x 8,	1 "	-	.30	1.75	3.00

Quotations for other sizes on application.

AZO.

An ideal amateur paper. Prints and develops quickly by artificial light.

	DOZ.	GROSS.		DOZ.	GROSS.		
3½ x 3½,	2	\$.15	\$1.10	5 x 7,	5	\$.35	\$3.50
4 x 5,	2	.20	2.00	5 x 8,	8	.40	4.00

Quotations for other sizes on application.

AZO DEVELOPING POWDER.

6 powders, sufficient for 24 oz.,	\$.25
12 powders, sufficient for 24 oz.,	.50

Complete directions with each package.

HUB BLUE PRINT PAPER.

Quickly printed and easily handled.

This paper possesses peculiar and characteristic properties found in no other brand.

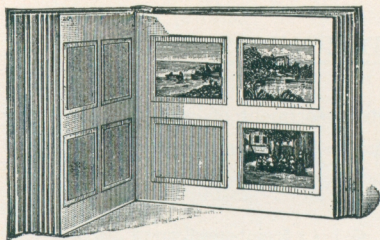
$3\frac{1}{2} \times 3\frac{1}{2}$, 25 sheets per package, \$.16		5 x 7, 25 sheets per package, - \$.35
4 x 5, 25 sheets per package, - .20		$6\frac{1}{2} \times 8\frac{1}{2}$, 25 sheets per package, .56

HUB SEPIA PAPER.

As simple to handle as Blue Print paper, producing a rich sepia tone.

$3\frac{1}{2} \times 3\frac{1}{2}$, 25 sheets per package, \$.16		5 x 7, 25 sheets per package, - \$.35
4 x 5, 25 sheets per package, .20		$6\frac{1}{2} \times 8\frac{1}{2}$, 25 sheets per package, .56

HAWK-EYE ALBUMS.



Neatly bound in cloth for unmounted prints.

The edges of the opening around each print is daintily tinted, giving the effect of a mat, greatly enhancing the appearance of the print.

2 x 2½, capacity, 96 prints, - \$1.25	4 x 5, capacity, 48 prints, - \$1.25
3½ x 3½, capacity, 48 prints, 1.25	5 x 7, capacity, 48 prints, - 1.90

SQUEEGEES.

Of the best velvet rubber, for use with ferrotype plates.

6 inch, - - - - \$.40	8 inch, - - - - \$.50
------------------------	------------------------

FERROTYPE PLATES.

Of the best quality that can be made, heavily coated, especially adapted for burnishing prints.

Size, 10 x 14 inches, - - - - - \$.15
--

CARD MOUNTS.

We do not carry a complete assortment of card stock, selecting only what we think most desirable for the amateur's use.

	PER DOZ.	PER 100		PER DOZ.	PER 100
2 x 2½, embossed, \$.10	\$.45	4 x 5, embossed,	\$.20	\$1.20
3½ x 3½, " "	.15	.75	5 x 7, " "	.25	1.90

HUB MAGNESIUM FLASHLIGHT POWDER.

This powder enables one to make exposures at night without the use of a flash lamp or other apparatus, and is supplied at a price within the reach of all. The method of using this powder is perfectly safe and the operator can join the group if desired. Packed in separate cartridges of one exposure each.

Package containing 8 Cartridges,	-	-	-	-	\$.25
Package containing 20 Cartridges,	-	-	-	-	.50

OUTFITS FOR DEVELOPING AND PRINTING.

To save time and trouble in selecting the articles needed for developing and printing, we furnish outfits including everything necessary at far below the cost if purchased separately.

3½ x 3½ FOR FILM OR PLATES.

1 Candle Lamp, - - - \$.25 4 Developing Trays, - - - .40 1 Glass Beaker, - - - .12 1 3½ x 3½ Printing Frame, .25 1 3½ x 3½ Glass, - - - .05 1 Stirring Rod, - - - .05 ¼ doz. Developing Powders, - .15	¼ lb. Hyposulphite of Soda, - \$.04 1 doz. Sheets Printing Paper, .15 1 Bottle Toning Solution, .10 1 Pkg. Bromide of Potassium, .10 1 Bottle Glycerine, - - - .05 Directions, - - - - .10
	\$1.81

Price, complete, - - - - - \$1.00

4 x 5 FOR FILM OR PLATES.

1 Candle Lamp, - - - \$.25 1 4 x 5 Printing Frame, - - .25 1 4 x 5 Glass, - - - .05 1 Glass Beaker, - - - .12 1 Stirring Rod, - - - .05 4 4 x 5 Developing Trays, - .40 ½ doz. Developing Powders, - .25	½ lb. Hyposulphite Soda, - \$.07 ½ oz. Bromide Potassium, - .10 2 doz. 4 x 5 Printing Paper, - .25 2 oz. Toning Solution, .15 1 oz. Glycerine, - - - - .05 Directions, - - - - .10
	\$2.09

Price, complete, - - - - - \$1.50

DEVELOPING AND PRINTING.

	DEVELOPING, PRINTING & MOUNTING—12 EXPOSURES.	DEVELOPING ONLY.	PRINTING AND MOUNTING.	DEVELOPING, PRINTING & MOUNTING.
2 x 2½	\$.80	\$.03	\$.04	\$.07
3½ x 3½	1.50	.06	.08	.12½
4 x 5	1.80	.08	.10	.15
5 x 7	2.40	.08	.12½	.20

Twenty-five cents extra will be charged on orders for less than one dozen prints. When finishing full rolls, we furnish duplicates to make up full number, provided there are any failures.

TERMS.

The prices as given are net except to dealers.

Remittance should be made by draft on New York, express order, postal order, or registered mail. Amounts less than one dollar may be remitted in stamps. We do not accept personal checks.

Parties unknown to us desiring shipment C. O. D., must remit one third the estimated amount of invoice with the order.

Small parcels which do not contain glass in any form, can be sent by mail at risk of the purchaser. We do not pay postage—remit when ordering.

All our goods are packed carefully, and we cannot be held responsible for any damage after a package leaves our hands.

No charge is made for packing, and prices are f. o. b., at Rochester.