

MAY 1956



PRODUCT DIRECTORY



E. LEITZ, INC., 468 FOURTH AVENUE, NEW YORK 16, N. Y.

YOUR FRANCHISED LEICA DEALER

The cameras, lenses, and other merchandise you will find in this catalog are sold only through Franchised Leica Dealers. These dealers are prepared to perform many services for you, and so we would like you to know more about them and their relationship with us.

The Leica franchise is held by about 1400 out of a total of over 10,000 photographic dealers throughout the United States. A Leica franchise is granted to a dealer only after consideration of the following factors:

- (a) his integrity,
- (b) his knowledge of the Leica and its wide selection of accessories,
- (c) his willingness to keep a selection of Leica models, parts, and accessories on hand for your convenience.

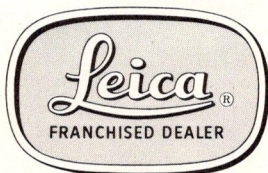
We urge you to get acquainted with your local Leica dealer. He can give you many tips on how to get the most out of your Leica and on photography in general.

We wish also to say a word about the retail prices set forth in this catalog. These prices have been established at the lowest level consistent with Leica's unequalled quality. They are covered by fair trade laws where applicable. Fair trading has been established to assure your dealer of a reasonable profit margin (the lowest in the photographic industry, incidentally) and make it possible for him consistently to give you excellent service.

Because of the reputation and the popularity of the Leica, some dealers who do not hold a Leica franchise attempt to handle Leica merchandise. As new, legally imported Leica merchandise is sold only through Franchised Leica Dealers, Leica merchandise obtained by non-franchised dealers is second-hand, and sometimes has been obtained through illegal channels. To be certain that you are getting new, legally imported merchandise, be sure to buy it from a store that displays the sign of a Franchised Leica Dealer. When you buy from him a new Leica camera or lens you are sure it is new as he will give you both a Leitz import certificate and a Leitz registration card which positively identify the equipment by serial number. Upon the return of the registration card to E. Leitz, Inc. you will receive a guarantee certificate, which is confirmation that you are the original purchaser.

Not only is the Franchised Leica Dealer the only legitimate source of new Leica merchandise but also he is the best source for used Leica merchandise. Leica cameras and accessories are built to give many years of satisfactory service. Consequently, Leica equipment commands a high value for trade-in or resale purposes, and if the equipment has not been abused, it will continue to give excellent results for many years. However, it is recommended that used equipment be purchased only from your regular Franchised Leica Dealer. You can have confidence in what he tells you concerning its age, and you can look forward to cheerful and helpful service in the years to come.

Your Franchised Leica Dealer



proudly displays this sign

CONTENTS

CAMERAS AND LENSES

Cameras	6
Lenses and Accessories	10
Stereo Attachment	13

CAMERA AND LENSES

ACCESSORIES

Viewfinders	15
Lens Hoods	16
Filters	18
Filter Adapters	21
Carrying Cases	22
Exposure Meters	26
Attachments	28
Correction Lenses	29
Flash Equipment	30
Lens Protection Covers	41

ACCESSORIES

CLOSE-UP

Optical Close Focusing Devices	43
Supplementary Lenses	43
Fixed Focus Units	44
Bellows Equipment	44
Focalslide Equipment	46
Extension Tubes	47
Focusing Magnifiers	48
Variable Focus Reproduction Units	49
Focalslide Photomicrography	51
Micro-Ibso	52
Micro Attachment	53
Accessories for Photomicrography	54
Supplemental Equipment for Photomicrography	54
Magnifiers and Reading Glasses	55
Dissecting Stands	56

CLOSE-UP

DARKROOM

DARKROOM

Bulk Loading Equipment	57
Developing Tanks	58
Contact Printers	59
Enlargers and Accessories	62

PROJECTORS

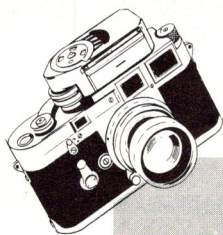
PROJECTORS

Projectors	69
Slide Binding Equipment	75

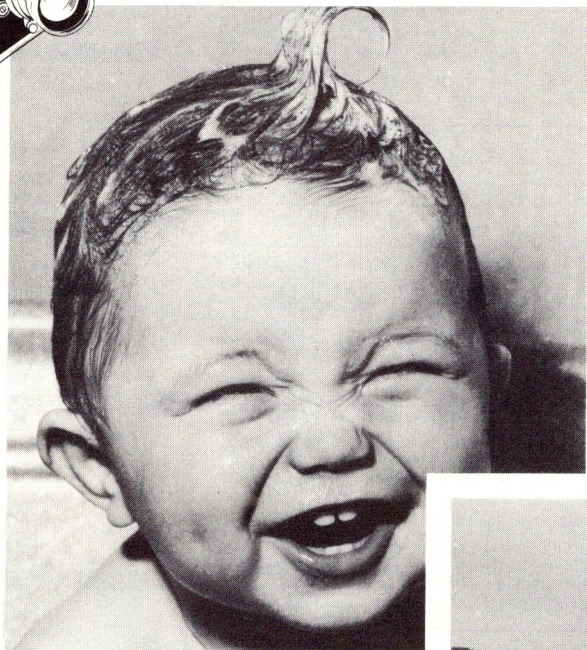
MISCELLANEOUS

MISCELLANEOUS

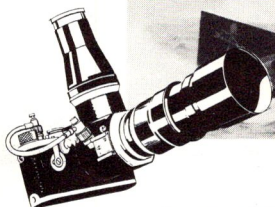
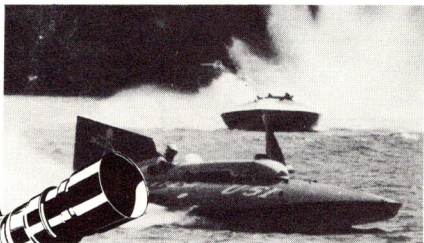
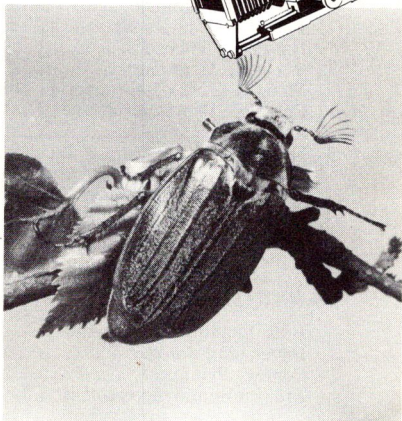
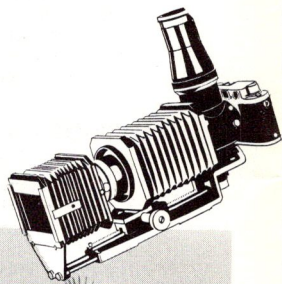
Adox Film	77
Publications and Books	79
Lens Data Chart	81
Projection tables	82
Copying Chart	83



THE *Leica* SYSTEM[®]



...meets all
your photographic
needs!



Sooner or later, as your photographic skill develops, you will need a camera versatile and flexible enough to keep up with you. With a Leica, you have it right from the start. Indeed, the first Leica introduced versatility and flexibility 30 years ago as a new and basic concept of camera design. Its 35mm negatives, its many accessories, its impeccable precision, make it at once small and marvelously capable.

For *whom* is the Leica designed? The hobbyist? The professional? The sports photographer? Salon worker? Photo journalist, child photographer? Scientific researcher?

The answer is, "All of them—and more!"

For the Leica is the world's most versatile camera. Its makers, for four generations the producers of the world's finest microscopes, designed it from the start as the keystone of a scientific *system* of photography—the Leica System. It is a coordinated system with a picture-taking scope unequalled in the history of photography.

Your Leica Masters Any Photo Job

So, whether you're a scientist, a doctor, a researcher, or just someone who enjoys photography, the Leica System will help you to work more surely and easily. For there are more than 200 accessories for your Leica, each made with the same zeal for precision as the camera itself. Not only will they assure your command of general photography, but make the specialized techniques easy as well! You will find equipment for close-up and copy work in vast variety to suit your exact needs. With it, you can use your Leica for dental, medical and ophthalmic macrophotography and photomicrography, to copy manuscripts, or to capture the beauty of minerals and insects. With your Leica, you are the most versatile of photographers!

You Can Match The Lens To The Job

The Leica's tremendous versatility is based first on its interchangeable lenses. You can choose among ten critically sharp, finely corrected lenses with focal lengths from 28mm to 400mm. You can even shoot stereo pictures of close or distant subjects with the brand-new Stemar attachment. Angles of view, perspectives, details of distant scenes, even dimensions your own eyes are too imperfect to register, you can capture easily on film with one or another of your Leica lenses. What's more, you can choose from lenses with standard apertures or those with ultra-high speed. You are master of any picture situation with your Leica lenses.

Darkroom Equipment As Precise As The Leica

And the Leica System doesn't stop with the taking of your negatives or color slides. Daylight developing tanks to process your own negatives to perfection, contact printers help you to make file prints, slide films, or lantern slides of your pictures, enlargers to carry the wire-sharp detail of your Leica negatives through to giant prints for exhibition—all are designed for Leica negatives and made with the same exquisite precision as the camera and lenses themselves.

Projectors To Capture The Full Beauty Of Your Slides

For projecting your transparencies, color and black-and-white, planar and stereoscopic, you will welcome one of the Leitz Prado projectors. Perhaps the tiny but powerful Prado "150". Or the extremely flexible "500" professional with its choice of lenses for conventional or stereo projection and lamps up to 750 watts. In either case, you can be sure your projector is made with the same perfection as your Leica. There are many, many other Leica accessories—filters, carrying cases, lens hoods, exposure meters—each planned with care to fit precisely into the Leica System and to aid your mastery of photography.

As you thumb through the pages of this catalog, you will find detailed descriptions of the different models of the Leica camera, its lenses, and the various accessories which make up the Leica System of photography. Camera . . . lens . . . accessory . . . each is made to complement the other; each reflects the exquisite care that gives the phrase "Leica quality" meaning in every language.

E. Leitz, Inc. owns or has rights with respect to the following trade names and trade-marks: "Leica", "Leitz", "E. Leitz, Inc. N. Y.", "E. Leitz Wetzlar", "Leica Meter", and "Summicron".

CAMERA AND LENSES

CAMERAS

It was thirty years ago that the Leica gave 35mm photography to the world. Today, three decades and three-quarters of a million cameras later, its name is a symbol for all that is first and best in design, performance, and construction.

No matter how casual or wide-ranging your photographic interests, one of the two basic Leica designs will serve them perfectly.

The Leica M 3

The M 3 is the masterpiece of the world's most skilled designers. Graceful and compact, yet rugged and incredibly precise, its many automatic features give the M 3 absolutely unequalled speed, simplicity, and ease of operation. It is the newest member of a truly distinguished family of cameras.

The "f" Series Leicas

Except for the M 3, the If, IIf, and IIIIf are the simplest most efficient precision cameras you can buy. Even more compact than the M 3, they offer you extreme versatility at a considerable saving. Depending on the model you prefer, the "f" Leicas give you the choice of both low and high shutter speeds, manual or coupled-range finder focusing, built-in or accessory viewfinder. All are flash synchronized.

"72" Exposure Leica

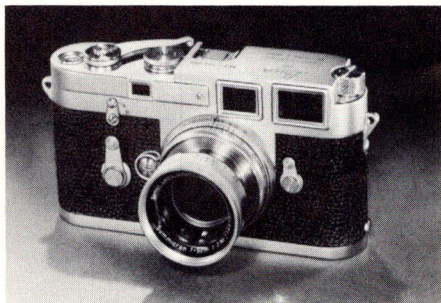
If you make film strips, you will like this new model especially designed for this work. It takes 72 single-frame exposures on an ordinary 36-exposure roll of 35mm film. Similar to the "f" Leicas in looks, it is also internally synchronized for flash and has shutter speeds from 1 second to 1/1000th of a second.

Every Leica is Distinguished

One of the most satisfying things about a Leica is the fact that, no matter which you choose, you buy a lifetime of service, pride, and pleasure. Your confidence in it is always justified.

LEICA M3

The Leica M 3 is the outstanding camera of the renowned Leica line. Like all Leicas, it uses 35mm film. But, it is somewhat heavier and larger than the others because it has many new automatic features which make it simple and foolproof to use. The rangefinder and viewfinder are combined into one optical system. The image is lifesize. The brightline frame within the viewfinder shows the exact field, changing automatically as you lock the 90mm or 135mm lenses into the bayonet flange. A special frame selector allows you to "preview" the field covered by the 90mm or 135mm lens without actually attaching the lens. Not only is there automatic compensation



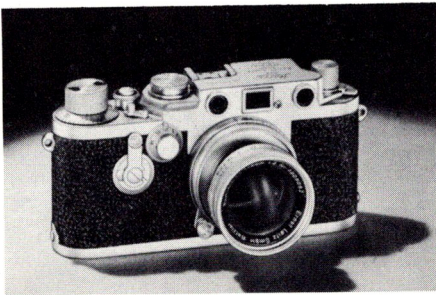
Leica M 3 with 50mm Summicron f/2.

for parallax as the lens is focused, but you can use the rangefinder as either a coincident or split-image type. You command shutter speeds from 1 second to 1/1000th including "bulb". All are on one click-stop dial which you can set either before or after winding the camera. You can even set intermediate speeds accurately between 1/50th and 1/1000th of a second. The Leica-Meter "M", available as an accessory, couples to the shutter speed dial and automatically adjusts the shutter speed. You just line up your lens opening with the indicator needle.

The film is advanced and the shutter wound simultaneously as you operate the built-in rapid winder which interlocks with the shutter release to prevent accidental tripping before the shutter is fully wound. You can open the back of the M 3 for easy loading. Also the rewind lever as well as exposure counter automatically reset themselves when you load the camera with a fresh roll of film. The built-in self-timer has a delay variable between 5 and 10 seconds.

<i>Catalog Number</i>	<i>Code Word</i>	<i>Item</i>	<i>Retail Price</i>
10,150	IGEMO	Leica M 3 without lens.....	\$288.00 *
10,155	IMARO	Leica M 3 with 50mm Elmar f/3.5 lens.....	354.00 *
10,161	ISUMO	Leica M 3 with 50mm Summicron f/2 lens.....	447.00 *
10,165	ISAIO	Leica M 3 with 50mm Summarit f/1.5 lens.....	477.00 *

LEICA IIIf



Leica IIIf with 50mm Summicron f/2 Lens

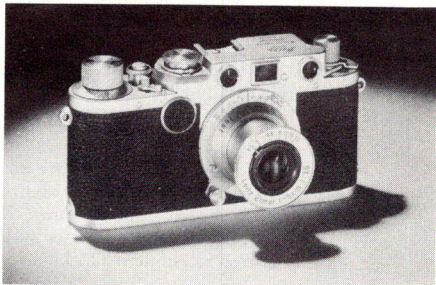
The Leica IIIf is the most versatile of the cameras in the "f" series. It has shutter speeds from 1 second to 1/1000th second including Time and "bulb". You get a built-in viewfinder for the 50mm lenses and a coupled rangefinder which magnifies 1.5X for extreme accuracy of focus. You also get a built-in self-timer for taking your own picture or tripping the camera on an unsteady support.

10,050	LOOHW	Leica IIIf without lens.....	\$180.00 *
10,055	LOOPN	Leica IIIf with 50mm Elmar f/3.5 lens.....	238.50 *
10,061	LUOOX	Leica IIIf with 50mm Summicron f/2 lens.....	336.00 *
10,065	LOOIT	Leica IIIf with 50mm Summarit f/1.5 lens.....	366.00 *

* Including Federal Manufacturer's Excise Tax

LEICA IIf

The Leica IIf differs from the IIIf in its range of shutter speeds (from 1/25th to 1/1000th second and "bulb") and by not having a built-in self-timer. A detachable self-timer is available as an accessory. The IIf is the ideal camera for all around photography if you do not need the slower shutter speeds, but here again an accessory is available for obtaining slow speeds. You can have your IIf converted at any time to include the features of the IIIf camera.

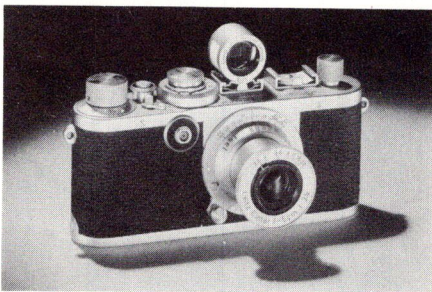


Leica IIf with 50mm Elmar f/3.5 Lens

Catalog Number	Code Word	Item	Retail Price
10,030	LOOSE	Leica IIf without lens.....	\$120.00 *
10,035	LOEL	Leica IIf with 50mm Elmar f/3.5 lens.....	178.50 *
10,041	LUON	Leica IIf with 50mm Summicron f/2 lens.....	276.00 *

LEICA If

The Leica If has shutter speeds from 1/25th to 1/500th second and "bulb". There are two accessory clips for the detachable viewfinder and rangefinder. The If is the least expensive model; it is offered principally for laboratory use where a viewfinder and coupled rangefinder are not required. By mounting the separate viewfinder and rangefinder on the camera, you can use it for general photography. Or you can convert it any time to include the built-in viewfinder, coupled rangefinder and range of shutter speeds of the IIf or IIIf cameras.



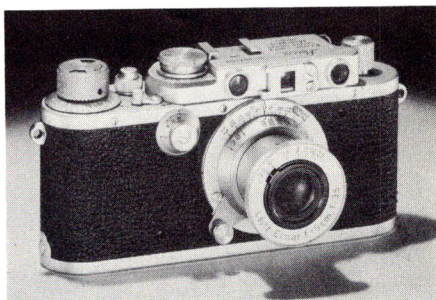
Leica If with 50mm Elmar f/3.5 Lens

10,000	OEFGO	Leica If without viewfinder, rangefinder or lens.....	\$ 70.80 *
10,005	OEGIO	Leica If with Optical-Brilliant viewfinder for 50mm lenses, but without rangefinder or lens.....	81.00 *
10,010	OEINO	Leica If with 50mm Elmar f/3.5 lens and viewfinder, but without rangefinder.....	139.50 *
10,025	FOKOS	Rangefinder for Leica If; chrome finish.....	21.00
10,027	CLIPP	Shoe for mounting If rangefinder on cameras of larger size.....	1.20

* Including Federal Manufacturer's Excise Tax.

LEICA "72"

The Leica "72" exposure model is made expressly for making microfilms and 35mm film strips or other types of photography where you want a large number of pictures with film economy. The single frame (18 x 24mm) format of the Leica "72" gives you twice as many pictures per unit length of film as the double frame (24 x 36mm) format of other Leicas. The "72" exposure Leica has shutter speeds from 1 second to 1/1000th including time and "bulb". It does not have a built-in self-timer, but the built-in coupled rangefinder magnifies 1.5X as in the models IIIf and IIIIf. A handy viewfinder mask outlines the single frame field covered by a 50mm lens. The lens changing flange is the same as that on the If, IIIf and IIIIf Leicas.



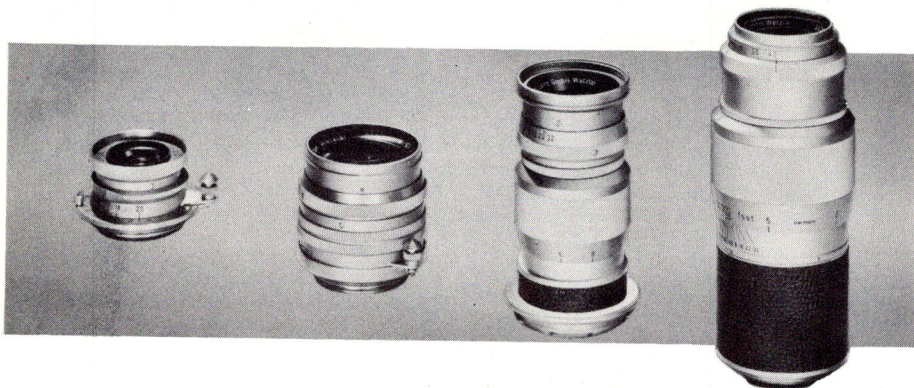
Leica "72" with 50mm Elmar f/3.5

<i>Catalog Number</i>	<i>Code Word</i>	<i>Item</i>	<i>Retail Price</i>
10,080	LKOOM	Leica "72" exposure without lens.....	\$189.00 *
10,085		Leica "72" exposure with 50mm Elmar f/3.5 lens.....	247.50 *

* Including Federal Manufacturer's Excise Tax

LEICA LENSES

The Leica System of Photography could not be so universally efficient without its wide selection of truly outstanding interchangeable lenses. Each Leica lens functions with the same unchanging optical and mechanical perfection, no matter what Leica it is used with. Each has its own focusing mount matched precisely to the lens elements it holds. Every mounted lens must pass rigid optical and practical photographic tests before it is released for sale.



Leica Lenses: 35mm Summaron $f/3.5$; 50mm Summarit $f/1.5$; 90mm Elmar $f/4$; 135mm Hektor $f/4.5$

You can get Leica lenses in focal lengths from 28mm wide-angle to 400mm telephoto. Some have apertures as large as $f/1.5$. In general, you will use the 50mm lenses for all-around photography; they are considered "standard". The viewfinder built into your Leica shows their field of coverage. But there are photographic problems you can solve only with lenses of other focal lengths. To cover a larger picture area without changing the camera position, you will use a wide-angle lens. To bring distant subjects "closer" to fill your negative area, choose a long-focus or telephoto lens. And, that is not all. A choice of focal lengths gives you complete control over perspective—the relative prominence of background and foreground in your pictures.

Behind each Leica lens is more than a century of skill and experience in designing and making precision microscopes and optical equipment. Today's unparalleled Leica lenses are products of constant research and the development of new optical glasses. They are exceptionally well corrected, and equally perfected for both color and black-and-white photography. Each glass-to-air surface of Leica lenses is anti-reflection coated for extra light transmission and image contrast.

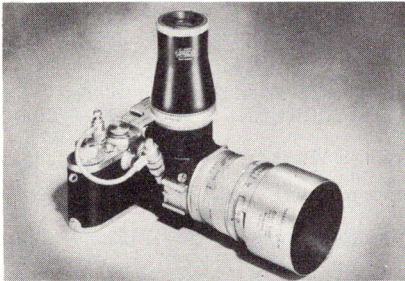
All lenses are available in a screw mount fitting Leica models "Standard" and later. You can also get 35mm, 50mm, 90mm, and 135mm lenses with bayonet-type mounts to fit the Leica M 3. If you own screw-mounting Leica lenses, you can use them on the Leica M 3 with adapters.

Lenses up to and including the 135mm Hektor (except the 125mm Hektor $f/2.5$) fit directly on the camera and couple to the built-in rangefinder of the Leica. The longer focal length lenses as well as the 125mm Hektor and 135mm Hektor in short mount, you will use with the Visoflex housing, described below. Lenses designed for use with the Visoflex are in screw-mount only, since a threaded flange is used to mount them. The 200mm and 400mm Telyt lenses are finished in black to match the Visoflex; all others have a chrome finish.

Each lens has a front protection cap. Lens hoods which you can invert on the lens are included with the 85mm Summarex, 125mm Hektor and the 200 and 400mm Telyt lenses. Hoods for other Leica lenses are available as accessories.

THE VISOFLEX HOUSING

As mentioned previously, you will use certain lenses with the Visoflex housing. The Visoflex, a reflex focusing housing, gives you ground glass focusing and framing. With it, you see the subject up to the instant of exposure. Because of their large size, some of the longer focal length lenses obstruct the rangefinder opening. Therefore you must focus them with the Visoflex. You can get the Visoflex with either a bayonet-type mount for the Leica M 3 or screw-mount for other Leica models. You will find it unexcelled for copying and macrophotography; it is an important part of the bellows equipment described under the section on close-up photography. The Visoflex weighs approximately 20 ounces and comes with a special double cable release that trips mirror and shutter at the same time and a 5X Wide-Field Magnifier for viewing the groundglass screen. You can also get other interchangeable magnifiers of various types to use with it. A special Release Coupling which replaces the double cable release is available as an accessory.



125mm Hektor f/2.5 Lens, Visoflex Housing,
Release Coupling and Leica IIIf



200mm Telyt f/4.5 Lens, Visoflex Housing and
Double Cable Release

LENSES

Catalog Number	Code Word	Item	Retail Price
11,001	SNOOX	28mm Summaron f/5.6; screw-mounting.....	\$105.00 *
11,005	SOONC	35mm Summaron f/3.5; screw-mounting.....	102.00 *
11,105	SOONC-M	35mm Summaron f/3.5; bayonet-mounting.....	105.00 *
11,010	ELMAR	50mm Elmar f/3.5; screw-mounting.....	58.50 *
11,110	ELMAR-M	50mm Elmar f/3.5; bayonet-mounting.....	66.00 *
11,016	SOOIC	50mm Summicron f/2; screw-mounting.....	156.00 *
11,116	SOOIC-M	50mm Summicron f/2; bayonet-mounting.....	159.00 *
11,020	SOOIA	50mm Summarit f/1.5; screw-mounting.....	186.00 *
11,120	SOOIA-M	50mm Summarit f/1.5; bayonet-mounting.....	189.00 *
11,025	SOOCX	85mm Summarex f/1.5; screw-mounting.....	360.00 *
11,030	ELANG	90mm Elmar f/4, rigid; screw-mounting.....	96.00 *
11,130	ELANG-M	90mm Elmar f/4, rigid; bayonet-mounting.....	99.00 *

* Including Federal Manufacturer's Excise Tax.

<i>Catalog Number</i>	<i>Code Word</i>	<i>Item</i>	<i>Retail Price</i>
11,131	ILNOO	90mm Elmar f/4, collapsible; bayonet-mounting	\$156.00 *
11,032	HIKOO	125mm Hektor f/2.5 in short mount without Visoflex	147.00
11,033	HIKOO-OZYXO	125mm Hektor f/2.5 with screw-mounting Visoflex	249.00
11,034	HIKOO-OZYXO-M	125mm Hektor f/2.5 with bayonet-mounting Visoflex	252.00
11,035	HEFAR	135mm Hektor f/4.5; screw-mounting	138.00
11,135	HEFAR-M	135mm Hektor f/4.5; bayonet-mounting	141.00
11,040	OHEBO	135mm Hektor f/4.5 in short mount without Visoflex. (Lens unit will fit screw-mounting Long Focusing Mount ZOOKE)	121.50
11,140	OHEBO-M	135mm Hektor f/4.5 in short mount without Visoflex. (Lens unit will fit bayonet-mounting Long Focusing Mount ZOOKE-M)	121.50
11,060	OTPLO	200mm Telyt f/4.5 in short mount without Visoflex	165.00
11,065	TOOLP	200mm Telyt f/4.5 with complete screw-mounting Visoflex #11,055	267.00
11,165	TOOLP-M	200mm Telyt f/4.5 with complete bayonet-mounting Visoflex #11,155	270.00
11,066	TLCOO	400mm Telyt f/5 in short mount without Visoflex	465.00
11,067	TLOOB	400mm Telyt f/5 with complete screw-mounting Visoflex #11,055	567.00
11,167	TLOOB-M	400mm Telyt f/5 with complete bayonet-mounting Visoflex #11,155	570.00

Additional lens information will be found on Page "81" under "Data".

LENS ACCESSORIES

11,055	OZYXO	Visoflex, screw-mounting; complete with special cable release and 5X wide-field focusing magnifier (weight 20 oz.)	102.00
11,155	OZYXO-M	Visoflex, bayonet-mounting; complete with special cable release and 5X wide-field focusing magnifier (weight 20.5 oz.)	105.00
14,085	OZWTO	Double Cable Release for Visoflex and any Leica (except Leica M 3)	7.50
14,083	OZWTO-M	Double Cable Release for Visoflex and Leica M 3	7.50
14,086	OZXVO	Release Coupling for Visoflex and any Leica (except Leica M 3). Single-button hand or cable release operation	9.00
14,088	OZTNO	Release Adapter. Adapts Visoflex Double Release OZWTO and camera Cable Releases FINOT, OPKOM and FIDRI to Leica M 3	.60
14,087	OZXVO-M	Release Coupling for Visoflex and Leica M 3. Single-button hand or cable release operation (NOT YET AVAILABLE)	9.60
11,045	ZOAN	Short Focusing Mount adapting lens unit of 135mm lenses for use on Visoflex. (Serial number of lens must be furnished with order. Lenses having numbers 245,000 to 245,800 or lower than 241,000 must be sent to service department for fitting)	18.00

* Including Federal Manufacturer's Excise Tax.

Catalog Number	Code Word	Item	Retail Price
11,050	ZOOKE	Long Focusing Mount , screw-mounting, parallel focusing; adapting short-mounted 135mm Hektor lens OHEBO for use on Leica cameras fitted with threaded lens flange. (Serial number of lens must be furnished with order. Mounts with non-parallel focusing will be supplied for lenses having serial numbers below 1,130,000).....	34.50
11,150	ZOOKE-M	Long Focusing Mount , bayonet-mounting, parallel focusing; adapting short-mounted 135mm Hektor lens OHEBO-M for use on Leica M 3 camera. (Serial number of lens must be furnished with order)	37.50
11,070	MOOSP	Extension Tube (15mm), fitting between 200mm Telyt and Visoflex for photography between 6 and 10 feet.....	2.10
11,075	TZFOO	Intermediate Collar (62.5mm) with special viewfinder shoe. Replaces Visoflex when using 200mm Telyt directly on Leica cameras having threaded lens flange.....	\$18.00
11,076	TXBOO	Intermediate Collar (62.5mm) with special viewfinder shoe. Replaces Visoflex when using 200mm Telyt directly on Leica cameras having bayonet lens flange.....	19.50
11,200	IRZOO	Bayonet Adapter ; adapting screw-mounting 28mm, 35mm and 50mm Leica lenses and Visoflex to Leica M 3.....	10.50
11,210	ISBOO	Bayonet Adapter ; adapting screw-mounting 90mm Leica lenses to Leica M 3.....	10.50
11,220	ISOOZ	Bayonet Adapter ; adapting screw-mounting 135mm Hektor lens in long mount to Leica M 3.....	10.50
11,080	CINLE	Cine Adapter ; adapting screw-mounting Leica lenses (except 135mm Hektor in short mount and 200mm and 400mm Telyt lenses in short mount) to type "C" 16mm motion picture camera mount.....	4.50
11,085	OSBLO	Eyepiece converting screw-mounting 50mm and 90mm Leica lenses to telescopes of 3.5X and 6X power respectively. Screws on base of lens...	4.80

LEICA STEREO PHOTOGRAPHY

Nothing surpasses the beauty or fidelity of three dimensional Leica pictures. Also you can enjoy your transparencies with equal pleasure either by projection or hand viewing.

Stereo photography is not limited to color alone. You can take surprising and realistic 3 D pictures in black and white as well. Black and white transparencies may also be projected or enjoyed with a hand viewer, but you will need an intermediate positive transparency.

The Leica system of stereo photography offers you several distinct advantages. You may take both regular and stereo pictures intermixed on the same roll of film in your Leica and also enjoy film economy. The stereo pairs are side by side on the one double frame (2" x 2" slide). Leica color stereo transparencies are returned by the processing laboratory ready for viewing. No cutting, transposing or mounting is needed.

The Stemar, basis of the Leica stereo system, is interchangeable just as other Leica lenses are. It fits into the lens flange of the camera and couples to its built-in rangefinder. Its two matched 33mm Elmar f/3.5 lenses have an angle of view of 47.5° and an inter-pupillary separation of 18.4mm. The parallel focusing mount goes from 3.5 feet to infinity and the diaphragm closes down to f/11.



Stemar, Prism Attachment, IIIIf and Optical Finder

The normal separation of the Stemar objectives gives stereo perspective at distances up to 10 or 15 feet. It avoids the exaggerated effects which you would get if a wider separation were used. The Stemar has both front and rear protection covers.

When photographing at greater distances, you get proper stereo perspective by placing the Stereo Prism in front of the Stemar, increasing the interpupillary separation to 72mm. The Stereo Prism, which is anti-reflection coated, locks on the Stemar with a bayonet catch. You can attach or remove it instantly. The prism has a rear protection cover.

The viewfinder built into the Leica, as well as the separate auxiliary finders, outlines a double frame format. The Leica stereo is single frame (18 x 24mm). Thus, it needs a special viewfinder. The finder fits the accessory clip of the Leica and is of the sports type, outlining the stereo field by a reflected translucent bright line. You allow for parallax by referring to a dotted line visible in the field.

The Stereo viewer for Stemar transparencies has optics that are unique. Proper viewing calls for the picture positions of the stereo pair to be exchanged before they reach your eyes. When you project them, the opposite is true; they should not be transposed. Therefore, to meet both requirements and eliminate the need to cut, transpose and remount the stereo pair, the viewer has prisms which transpose the images optically. A battery-powered light attachment is available as an accessory to make you independent of an outside source of light.

You will find stereo projection equipment in the section describing projectors.

<i>Catalog Number</i>	<i>Item</i>	<i>Retail Price</i>
11,505 OHIKO	Stereo Unit complete with Stemar, Prism and Viewfinder; for use with Leica cameras having threaded lens flange.....	\$294.00 *
11,500 OISBO	Stemar Stereo Attachment fitting Leica cameras having a threaded lens flange.....	180.00 *
11,515 OHIKO-M	Stereo Unit complete with Stemar, Prism and Viewfinder; for use with Leica cameras having bayonet lens flange.....	297.00 *
11,510 OIASO	Stemar Stereo Attachment fitting Leica cameras having a bayonet lens flange.....	183.00 *
11,520 OIMPO	Stereo Prism fitting Stemar (either 11,500 or 11,510).....	96.00
11,525 OIDYO	Stereo Viewfinder for use with Stemar.....	18.00
12,550 OIGEO	Stereo Lens Hood with bayonet fitting for 33mm Stemar stereo lens....	8.40
11,600 OINRO	Stereo Viewing Unit complete with 5X viewer and light attachment....	49.50
11,605 OIPVO	Stereo Viewer (5X) without light attachment.....	39.90
11,610 OICWO	Light Attachment for Stereo Viewer.....	9.60

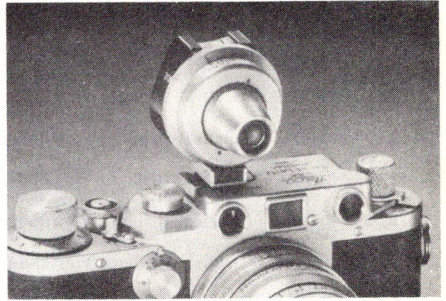
* Including Federal Manufacturer's Excise Tax.

ACCESSORIES

VIEWFINDERS

The viewfinder built into the Leica camera (except the model M 3) shows only the field of the 50mm lenses. When a lens of longer or shorter focal length is used, it is necessary to employ an auxiliary finder showing the coverage of that lens. There are three types of viewfinders available:

The Imarect Universal Viewfinder fits into the Leica accessory clip and may be adjusted to indicate the exact field of all Leica lenses from the 35mm wide angle to the 135mm long focus lens and, by the addition of an adapter, the 28mm Summaron f/5.6 extreme wide angle objective. A lever actuated cam, calibrated in feet, is built into the finder for adjusting parallax. By composing your subject through the Imarect, it is easy to select the proper focal length lens best suited for the picture.



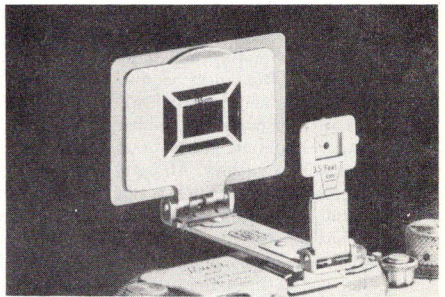
Imarect Universal Viewfinder.



Optical-Brilliant Viewfinder.

The Optical-Brilliant viewfinders also fit the accessory clip and are of the sports type, outlining the lens field by a reflected translucent bright line while at the same time permitting observation of a moving object before it enters the area photographed. Compensation for parallax in the stereo, 35 and 50mm finders is by reference to a dotted line visible in the field. The finders for the 85, 90 and 135mm lenses are adjusted for parallax by a ring surrounding the eye lens.

The Sports Frame finders are non-optical and outline the subject in a frame. Like the Optical-Brilliant finders, they allow observation of a moving object before it enters the lens field. The Universal Frame Finder fits into the accessory clip of the camera and has masks for the 50, 90 and 135mm lenses. It is adjusted for parallax by raising or lowering its calibrated eyepiece. The finders for the 200 and 400mm Telyt lenses fit into a special accessory shoe on the Visoflex or Intermediate Collar used with the 200mm lens and cannot be placed in the camera accessory clip. Parallax is adjusted by a click-stop ring.



Sports Frame Finder.

Leather cases for the various viewfinders are listed with the cases for other Leica equipment.

OPTICAL FINDERS

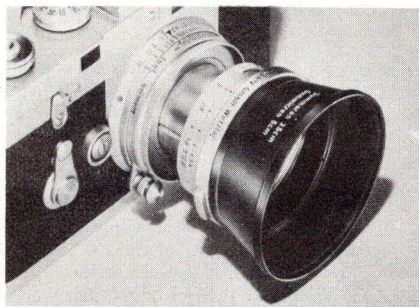
Catalog Number	Code Word	Item	Retail Price
12,000	VIOOH	Imarect Universal Viewfinder.....	\$ 39.00
12,005	TUVOO	Adapter for Imarect Finder, adapting it for use with 28mm Summaron f/5.6 wide angle lens.....	10.50
12,010	SBLOO	Optical-Brilliant Viewfinder for 35mm lenses.....	21.00
12,015	SBOOI	Optical-Brilliant Viewfinder for 50mm lenses.....	10.20
12,020	SGOOD	Optical-Brilliant Viewfinder for 85mm lens.....	15.00
12,025	SGVOO	Optical-Brilliant Viewfinder for 90mm lenses.....	15.00
12,030	SHOOC	Optical-Brilliant Viewfinder for 135mm lens.....	15.00
11,525	OIDYO	Optical-Brilliant Viewfinder for Stemar stereo attachment.....	18.00

FRAME FINDERS

12,035	SFTOO	Sports Frame Finder for 200mm lens.....	15.90
12,037	SQTOO	Sports Frame Finder for 400mm lens.....	15.90
12,040	ROSOL	Universal Frame Finder for 50mm, 90mm and 135mm lenses.....	9.00

LENS HOODS

Lens hoods are commonly called "sunshades". But under this name their use is psychologically restricted. You should, of course, protect your lens from the direct rays of the sun when you take a picture; if you do not, your picture will lose a great deal of contrast. But there is also unwanted light from other sources which will flatten your pictures. This is the light reflected from the sky, water, building, rocks or any object in the immediate vicinity. All light striking the surface of the lens which is not directly used to form the picture, will reduce its brilliance. What's more, this goes for flash and floodlight also. For best results, you should use a lens hood at all times. Because keeping out extraneous light is so important to your picture, specially designed hoods are available for all Leica lenses.



Lens Hood for 35mm and 50mm Bayonet Mounting Lenses

<i>Catalog Number</i>	<i>Code Word</i>	<i>Item</i>	<i>Retail Price</i>
12,500	SOOHN	Lens Hood with clamping screw for 28mm Summaron lens.	\$ 2.40
12,505	FOOKH	Lens Hood with clamping screw for screw-mounting 35mm Summaron and Elmar lenses.	2.40
12,510	FISON	Lens Hood with clamping screw for screw-mounting 50mm Elmar lens.	2.10
16,620	VALOO	Combination Lens Hood and Diaphragm Adjusting Ring, with set screw, for screw-mounting 50mm Elmar lens. Settings are indicated by click-stops and are visible from the side. Filters mount on front of the hood.	6.60
12,515	SOOPD	Lens Hood collapsible, with clamping device for 50mm Summaron lens.	7.50
12,516	SOOFM	Lens Hood collapsible, with clamping device for screw-mounting 50mm Summicron lens.	7.50
12,520	XOONS	Lens Hood with clamping screw for 50mm Summaron lenses.	3.90
12,525	ORQPO	Lens Hood with bayonet fitting for 85mm Summarex lens.	3.90
12,530	FIKUS	Adjustable Lens Hood with clamping screw for screw-mounting 50mm and 90mm Elmar and 135mm Hektor lenses.	5.70
12,532	HKMOO	Lens Hood with bayonet fitting for 125mm Hektor lens.	4.80
12,535	TNGOO	Lens Hood with clamping screw for 200mm Telyt lens.	4.50
12,540	TMEOO	Lens Hood with clamping screw for 400mm Telyt lens.	13.50
12,550	OIGEO	Stereo Lens Hood with bayonet fitting for 33mm Stemar stereo lens.	8.40

Hoods for Leica Bayonet-Mount Lenses

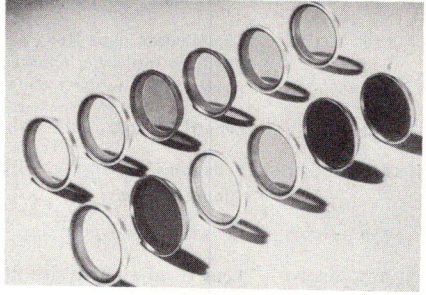
<i>Catalog Number</i>	<i>Code Word</i>	<i>Item</i>	<i>Retail Price</i>
12,580	ITOOY	Lens Hood with clamping device for bayonet-mounting 50mm Elmar lens	\$3.90
12,570	ITDOO	Lens Hood with clamping device for bayonet-mounting 35mm Summaron and 50mm Summicron lenses.	4.50
12,520	XOONS	Lens Hood with clamping screw for 50mm Summaron lenses.	3.90
12,575	IUFOO	Lens Hood with clamping device for bayonet-mounting 90mm Elmar and 135mm Hektor lenses.	4.50

FILTERS

Filters, like quality lenses, must be precision ground and polished to close tolerances. An inferior filter can spoil the wire-sharp results of your best lens. To protect the performance of your lens, Leitz filters are ground plano-parallel from optical glass;—and, except for the polarizing filters and those for color photography, they are not cemented but colored in the mass.

Naturally, fine glass, plano-parallel surfaces and evenness of coloring are necessary for quality. But the thinness of the filter is of the utmost importance. This is particularly true with the short focal length, high aperture Leica lenses.

Leitz filters for black and white photography are made from solid optical glass and ground thin (average: .066") to produce maximum sharpness. The polarizing filters and those for color photography are laminated. This must be done to get the precise transmission of light wavelengths demanded for color work, but they are kept as thin as possible.



Leica Filters

Filters For Black and White Photography

YELLOW. You'll use this mostly to darken the blue sky in relation to the rest of the scene and to give better contrast between sky (which normally photographs light grey) and white clouds. You can also use the yellow filters with orthochromatic film for a similar effect to what they give with panchromatic film. The different densities, 0 the lightest, 1 the darkest, hold back more blue as the density increases. This gives you control of contrast.

GREEN. The green filter has about the same effect on panchromatic film as a yellow filter of equal density. But it will lighten green foliage slightly more than a yellow filter does, and at the same time darken the sky. It is especially good for outdoor portraits against the sky, since it gives better flesh tones than yellow filters. But don't use green filters with orthochromatic film.

BLUE. The blue filter has little use in general photography. It will wash-out blue sky registering it "bald" and without white clouds. Its principal use is in copying, to darken faded writing which has yellowed with age.

ORANGE. The orange filter acts like the yellows, but absorbs more blue. It is a "contrast" filter. You will use it to get high contrast between white clouds and a relatively dark sky. An under-exposed shot taken with an orange filter in daylight and over-printed will look like a night shot. The orange filter will slightly darken green foliage. It is also good for making portraits of heavily freckled people, since it minimizes the tan of the freckles.

GRADUATED. The graduated filters run from clear glass on one edge to medium yellow or green on the other. You will like them when you want to filter the sky but not the foreground or vice versa.

ULTRA VIOLET ABSORPTION. The UVa filter absorbs the excessive ultra violet rays found at high altitudes. All film is sensitive to ultra violet; unless it is filtered out, your high altitude negatives will lack contrast. Yellow, green and orange filters will absorb more ultra violet than the UVa filter. But the clear glass of the UVa absorbs the ultra violet without filtering visual light. Distant scenes tend to be flat because moisture in the air scatters ultra violet light. A UVa filter gives better contrast to distant scenes. The UVa is sometimes called a "haze" filter, but it will in no way cut haze. For haze cutting, you will need infra-red film and an infra-red filter.

INFRARED. Use the infrared filters (medium or dark) with infrared film only. They are very dark and need excessively long exposures if you use them with panchromatic film.

Infra-red film combined with an infra-red filter produces some startling photographs. Pictures taken in the day time have a moonlight effect; green grass, tree leaves photograph white; blue sky turns out jet black. Aside from novel effects, infra-red film is used widely for medical photography, picturing questioned documents, taking pictures through fog.

Filters for Color Photography

Leitz Type "F", Type "FP", Type "A," Flash and Photoflood (PH), and Skylight (SL) filters are for use with color film. Like all filters for color photography, each is classed as either a conversion or a correction filter. Type "F", Type "A" and Photoflood (PH) are conversion filters, "converting" the light for use with film normally intended for use under different lighting conditions. The Skylight (SL), Flash and Type "FP" filters are correction filters. The Skylight (SL) corrects the excessive blue encountered when using daylight film in the shade. The Type "FP" corrects the blueness which results when you use Type "F" film with photofloods.

TYPE "F" (mount engraved "F"). Use this with Type "F" Kodachrome, Ektachrome or Anscochrome when you shoot outdoors in daylight.

TYPE "FP" (mount engraved "FP"). This permits you to use Type "F" Kodachrome, Ektachrome or Anscochrome with photofloods.

TYPE "A". Use this filter with Kodachrome Professional Film, Type A, 35mm, when you shoot outdoors in daylight.

FLASH. The Flash Filter is for Type "A" Kodachrome used with clear flash bulbs.

PHOTOFLOOD (mount engraved "PH"). This filter lets you use Kodachrome daylight type film to take pictures with photofloods.

SKYLIGHT (mount engraved "SL"). Used with daylight color films, it absorbs the excessive blue found at high altitudes and at the seashore. It also reduces the blueness of open shade and adds a general warmth to the transparency.

Polarizing Filters

These are not color filters but have a neutral density. You can use them for either black and white or color photography. They are the only means by which you can darken blue sky in color pictures without altering color or tone in the rest of the scene.

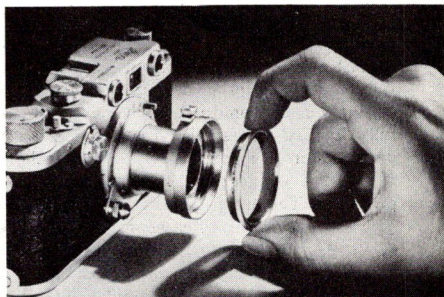
With a polarizing filter, you can eliminate or reduce reflections from the surfaces of water, show windows, furniture, etc. You will get varying effects, depending on the position at which you set the filter. You can get the polarizing filters in two types of mount: The engraved mount with reference numbers for setting the polarization plane and the swing-out rotating mount which lets you see the exact polarizing effect of the filter in front of the lens.

FILTERS FOR LEICA LENSES	28mm Summaron 28mm Hektor 35mm Elmar 35mm Summaron 50mm Elmar 50mm Hektor 50mm Summar 90mm Elmar 135mm Hektor		35mm Summaron* 50mm Elmar* 50mm Summicron 50mm Summicron* 90mm Elmar* 135mm Hektor* *Bayonet-Mount- ing lens		50mm Summarit		50mm Summarit		85mm Summarex 125mm Hektor		90mm Thambar 200mm Telyt		400mm Telyt	
	Mounting Method	Clamping-Screw		Screw-In		Screw-In		Bayonet		Screw-In		Screw-In		Screw-In
Yellow O (light)	13,000 FIHEL	\$ 5.55	13,081 HOGAR	\$ 5.55	13,080 GBOOM	\$ 5.55	13,155 XOOPT	\$ 7.05	13,230 UPOOZ	\$ 10.50	13,290 POOAH	\$ 7.05	13,291 TFOOG	\$ 19.50
Yellow I (medium)	13,005 FIGRO	5.55	13,086 HOUBE	5.55	13,085 GBWOO	5.55	13,160 XOOQG	7.05	13,235 UQMOO	10.50	13,295 POOBY	7.05	13,296 TFSOO	19.50
Green (medium)	13,015 FIPOS	5.55	13,096 HOFG	5.55	13,095 GCYOO	5.55	13,170 XOOSH	7.05	13,245 UROOX	10.50	13,305 FOODW	7.05	13,306 TIYOO	19.50
Blue (medium)	13,020 BQCOO	5.55	13,098 HOOKI	5.55	13,097 RQPOO	5.55	13,172 XQOOE	7.05	—	—	13,307 POOCQ	7.05	—	—
Orange (medium dark)	13,025 FSEOO	5.55	13,101 HOOGU	5.55	13,100 GDOOK	5.55	13,175 XOOZY	7.05	13,250 USOOW	10.50	13,310 POOKZ	7.05	13,311 TEQOO	19.50
Graduated Yellow (clear to medium)	13,030 FIRAD	5.55	—	—	13,105 GHOOF	5.55	13,180 XPGOO	7.05	—	—	—	—	—	—
Graduated Green (clear to medium)	13,035 FOOBD	5.55	—	—	13,110 GILOO	5.55	13,185 XPOOF	7.05	—	—	—	—	—	—
Red (dark)	13,040 FEDOO	5.55	13,116 HOOCS	5.55	13,115 GECOO	5.55	13,190 XOOUI	7.05	13,255 USQOO	10.50	13,315 POOGL	7.05	13,316 TGUOO	19.50
Infrared (medium)	13,045 FIKYB	5.55	13,121 HOODF	5.55	13,120 GFEOO	5.55	13,195 XOOVW	7.05	13,260 UTOOV	10.50	13,320 POOEK	7.05	13,321 THOOE	19.50
Infrared (dark)	13,050 FEOOG	5.55	13,126 HOOET	5.55	13,125 GFOOH	5.55	13,200 XOOWK	7.05	13,265 UTSOO	10.50	13,325 POOHY	7.05	13,326 THWOO	19.50
UVe Absorption (colorless)	13,055 FIOLA	5.55	13,131 HOUIU	5.55	13,130 GHIOO	5.55	13,205 XOOLY	7.05	13,270 UOOUF	10.50	13,330 POOEX	7.05	13,331 TIODD	19.50
Type "F"	13,061 FKDELM	7.44	13,138 FKDSMI	7.32	13,137 FKDSUM	6.66	13,216 FKDSMT	9.00	—	—	—	—	—	—
Photofood	13,065 FIKLO	7.44	13,141 FIFLOMI	7.32	13,140 FIFLO	6.66	—	—	—	—	—	—	—	—
Type "FP"	13,071 FPKELM	7.44	13,148 FPKSMI	7.32	13,147 FPKSUM	6.66	13,226 FPKSMT	9.00	13,286 FPKSAX	15.00	13,346 FPI TEL	10.50	—	—
Type "A"	13,060 FIKAT	7.44	13,136 FIDAYMI	7.32	13,135 FIDAY	6.66	13,215 XOOAY	9.00	13,275 USOAY	15.00	13,335 POOAY	10.50	—	—
Flash	13,070 FICHR	7.44	13,146 GCHEOMI	7.32	13,145 GCHEO	6.66	13,225 XOFLA	9.00	13,285 USFLA	15.00	13,345 POFLA	10.50	—	—
Skylight	13,075 FISKF	7.44	13,151 GCSKYMI	7.32	13,150 GCSKY	6.66	13,220 XOSKY	9.00	13,280 USSKY	15.00	13,340 POSKY	10.50	—	—
Polarizing (engraved mount)	13,350 POOEL	18.90	13,356 POOTR	19.80	13,355 POORE	19.80	13,360 XQIOO	19.80	—	—	—	—	—	—
Polarizing (swing-out mount)	13,390 FILPO	36.00	13,396 FISUMMI	37.50	13,395 FISUM	37.50	13,400 FINON	37.50	—	—	—	—	—	—
Filter Diameter	34mm		36.5mm		36.4mm		40mm		57mm		48mm		85mm	

NOTE: Polarizing Filter 13,350 is in slip-on mount. Polarizing Filters 13,355; 13,356 and 13,360 are in screw-in mount. Polarizing Filters 13,390; 13,395; 13,396 and 13,400 have clamping screw.

FILTER ADAPTERS

Rather than carry extra filters, you will often find it handier to use one made for a lens of different size. When that's the case, you can get adapters which allow the Summitar, Summicron and Summarit filters to be used on other lenses.



Filter Adapter for Summitar Filters.

<i>Catalog Number</i>	<i>Code Word</i>	<i>Item</i>	<i>Retail Price</i>
13,154	ADSUMMI	Filter Adapter fitting Summicron filters to the following screw-mounting lenses..... 28mm Hektor 35mm Elmar 35mm Summaron 50mm Elmar 50mm Hektor 50mm Summar 90mm Elmar 135mm Hektor	\$3.60
13,079	SOOTF	Filter Adapter fitting bayonet-mounting Summarit and screw-mounting Summitar filters to the above listed screw-mounting lenses.....	3.60
13,153	SOOQR	Filter Adapter fitting Summitar filters to the Summicron and all bayonet-mounting lenses except the 50mm Summarit.....	2.85
16,621	VOOLA	Diaphragm Adjusting Adapter for screw-mounting 50mm Elmar lens. Permits adjustment of diaphragm with slip-on filter in position.....	.75

SPECIAL FILTERS

13,500	FIRHE	Yellow Filter I (medium) in screw-in mount for 35 and 50mm Elmar screw-mounting lenses. Diaphragm may be adjusted with filter in position....	3.60
Paired Filters in screw-in mounts for 33mm Stemar Stereo Attachment			
13,605	OHUGO	Yellow I (medium).....	6.00
13,625	OHWLO	UVa Absorption (colorless).....	6.00
13,660	STESKY	Skylight	9.00
13,650	STEKPF	Photoflood	9.00
13,656	STEFKD	Type "F"	9.00
13,665	STEFPK	Type "FP"	9.00

CASES

Protective cases for your Leica equipment must not only preserve its finish and guard against accidental damage, but must also reflect your pride of ownership. Leitz leather cases are made from top quality hides, beautifully finished and strongly sewed. They are designed for utility; the Eveready cases allow you to use your equipment while it is kept protected. The other cases stress easy access. You can get Eveready cases in several styles to fit your individual camera-lens-accessory combinations. Sportsmen who own an "f" series Leica will find the metal water- and shock-resistant case ideal.



Typical Leica Camera, Lens and Accessory Cases

Each leather case for camera or lens, except the three smaller cases for the wide angle and 50mm lenses, has an adjustable shoulder strap. Shoulder straps for Eveready cases include a non-slip rubber shoulder grip.

Transparent filter cases not only protect your filters, but let you identify them without removing them from their container. Plastic lens cases are ideal when you use a particular lens occasionally and want to save the cost of a leather case.

CAMERA CASES

Catalog Number	Code Word	Item	Retail Price
14,500	ESOOG	Eveready Case for Leica If with 50mm Elmar lens and detachable rangefinder.....	\$ 12.30
14,505	EQBOO	Eveready Case for Leica If with 50mm Summicron lens and detachable rangefinder.....	12.30
14,510	ESNAR	Eveready Case for Leica (except M 3) with 50mm Elmar lens.....	12.30
14,515	ESFUS	Eveready Case for Leica (except M 3) with 50mm Summicron lens.....	12.30
14,516	EFGOO	Eveready Case for Leica (except M 3) with 50mm Summicron lens and Imarect Finder attached.....	15.00
14,517	EGIOO	Eveready Case for Leica (except M 3) with 50mm Summicron lens and Leica-Meter attached.....	15.00
14,520	EXOOM	Eveready Case for Leica (except M 3) with 50mm Summarit lens.....	12.30
14,521	EFOOD	Eveready Case for Leica (except M 3) with 50mm Summarit lens and Imarect Finder attached.....	15.00
14,522	EGOOC	Eveready Case for Leica (except M 3) with 50mm Summarit lens and Leica-Meter attached.....	15.00

<i>Catalog Number</i>	<i>Code Word</i>	<i>Item</i>	<i>Retail Price</i>
14,528	IDCOO	Eveready Case for Leica M 3 with 35mm, 50mm, or 90mm collapsible lens and Leica-Meter "M".....	15.00
14,529	IDWOM	Eveready Case for Leica M 3 with 50mm Summicron lens in collapsed position and without meter.....	13.50
14,535	EPZOO	Eveready Case similar to ESFUS, but for Leica fitted with Leicavit Rapid Winder.....	12.60
14,540	EMOOX	Eveready Case similar to EXOOM, but for Leica fitted with Leicavit Rapid Winder.....	12.60
14,525	ENTAR	Eveready Case for Leica (except M 3) with 28, 35 or 50mm lens (except Summarit) and Imarect Finder or Leica Meter attached.....	24.00
14,527	ETRNA	Eveready Case for Leica (except M 3) with Summarit lens and Imarect Finder or Leica Meter attached.....	27.00
14,518	MBROO	Eveready Case , metal, water- and shock-resistant; for Leica camera (except M 3) with 50mm Summicron lens.....	31.50
14,542	ETFLA	Carrying Case , pouch-type; for Leica (except M 3), Flash Unit and additional accessories (domestic).....	12.30
14,546	ELFOR	Combination Case holding "f" Series Leica, assorted lenses and accessories (domestic).....	33.00
14,547	EKOOZ	Combination Case holding "f" Series Leica, 6 lenses, 4 sunshades, 4 viewfinders, flash unit, angle bracket, optical close focusing device and self-timer (12½" x 11¼" x 3").....	48.60
14,548	COMMDO	Combination Case for Leica M 3, bayonet-mounting lenses and accessories (domestic).....	39.00
14,094	DXOOK	Shoulder Grip for strap of Eveready case. Will fit carrying straps up to ½ inch wide.....	.48

LENS CASES

14,550	ETILA	Leather Case for 28mm Hektor, 35mm Summaron or Elmar lens.....	\$2.40
14,560	ETIME	Leather Case for 50mm Elmar lens.....	2.40
14,565	ETBIX	Leather Case for 50mm Summitar, Summicron or Summarit lens.....	2.40
14,570	ENOOW	Leather Case for 85mm Summarex lens.....	8.10
14,575	ETINI	Leather Case for 90mm Elmar lens.....	6.00
14,574	ETINI-M	Leather Case for bayonet-mounting rigid 90mm Elmar lens.....	6.90
14,576	ETONO	Leather Case for 90mm Elmar collapsible lens.....	6.00

<i>Catalog Number</i>	<i>Code Word</i>	<i>Item</i>	<i>Retail Price</i>
14,577	EZDOO	Leather Case for 125mm Hektor lens.....	6.00
14,580	ETIPO	Leather Case for 135mm Hektor lens.....	7.20
14,585	EMTOO	Leather Case for Visoflex with 125mm Hektor, 135mm Hektor in short mount or 200mm Telyt lens.....	24.00
14,587	EMQOO	Leather Case for 400mm Telyt lens, Visoflex housing and Leica camera with double cable release and two filters.....	66.00
14,656	OIBUO	Leather Case fitted for screw-mounting Stemar, Stereo Prism, Stereo Viewfinder, and Stereo lens hood.....	24.00
14,657	OIBUO-M	Leather Case fitted for bayonet-mounting Stemar, Stereo Prism, Stereo Viewfinder and Stereo lens hood.....	24.00
14,590	BOORW	Plastic Case for screw-mounting 28mm Hektor, 35mm Elmar or Summaron or 50mm Elmar lens.....	.90
14,595	POLMO	Plastic Case for bayonet-mounting 35mm Summaron lens.....	1.65
14,600	BOOSK	Plastic Case for screw-mounting 50mm Summitar, Summicron or Summarit lens.....	1.20
14,601	POLWO	Plastic Case for bayonet-mounting 50mm Elmar, Summicron or Summarit lens.....	1.65
14,605	BOOPV	Plastic Case for screw-mounting 90mm Elmar lens.....	1.20
14,606	POLYO	Plastic Case for bayonet-mounting 90mm Elmar collapsible lens.....	1.65
14,607	POLXO	Plastic Case for bayonet-mounting 90mm Elmar rigid lens.....	1.80
14,610	BDOOZ	Plastic Case for screw-mounting 135mm Hektor lens.....	1.50
14,611	POLZO	Plastic Case for bayonet-mounting 135mm Hektor lens.....	2.10

FILTER CASES

14,660	POOSD	Plastic Filter Box for filters fitting 28mm Hektor; 35mm Elmar and Summaron; 50mm Elmar, Summitar and Summicron; 90mm Elmar and 135mm Hektor lenses.....	\$.45
14,661	POOUE	Plastic Filter Box for filters fitting 50mm Summarit lens.....	.45

FINDER CASES

14,615	EBOOH	Leather Case for Imarect viewfinder.....	\$1.80
14,620	COOXN	Leather Case for 35mm Optical-Brilliant viewfinder.....	1.20

<i>Catalog Number</i>	<i>Code Word</i>	<i>Item</i>	<i>Retail Price</i>
14,625	COOYA	Leather Case for 50mm Optical-Brilliant viewfinder.....	1.20
14,630	CPBOO	Leather Case for 85mm, 90mm, or 135mm Optical-Brilliant viewfinder..	1.20
14,635	RWBOO	Leather Case for Universal Frame Finder.....	1.20

ACCESSORY CASES

14,640	EHLOO	Leather Case for rangefinder FOKOS.....	\$ 2.10
14,613	EYZOO	Leather Case for Summitar or Summicron collapsible lens hood.....	1.50
14,645	APOOM	Leather Case for self-timer.....	.90
14,650	UYOOQ	Fiber Case for Bellows Focusing Device and accessories.....	12.00
14,655	ONLIO	Canvas Bag for portable copying equipment.....	20.40

EXPOSURE METERS

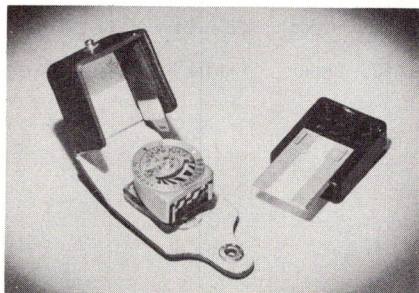
Two "musts" for good photography are correct focus and correct exposure. The built-in coupled range finder of your Leica assures proper focus; correct exposure is determined by your Leica-Meter.

There are two basic Leica-Meters, both of which fit into the accessory clip of the Leica. The convenient meter location and its angle of coverage, which approximates the 50mm. lenses, makes it easier than ever to make better pictures with your Leica. You can even get a booster cell to increase the range of your meter for use under poor lighting conditions.

THE LEICA-METER 2

The Leica-Meter 2 is small and compact; you can use it in the ingenious Eveready case that comes with it, or in the accessory clip on your Leica. Some people even find it handy to carry the meter on the little chain and retainer plate that comes with it. They clip the incident light adapter to the other end of the chain so it is always near at hand.

The calculator of the Leica-Meter 2 is calibrated in ASA and DIN and has two index marks; one for bright light, and one for poor light when you use the special booster cell. The booster cell comes in a hard leather case, and attachments for incident light measurement are furnished with both the meter and its booster cell.



Leica-Meter 2, Booster Cell and Incident Light Adapter

THE LEICA-METER "MC"



Leica-Meter "MC" on Leica M 3

The Leica-Meter "MC" is designed for use with the Leica M3 and fits the accessory clip of this model only. It couples to the shutter dial as you put it in the camera accessory clip. Its direct reading calculator is calibrated in ASA and DIN and has two sets of aperture markings. You use the red set when the sensitivity selector is set for low light levels, since this increases the meter sensitivity 125X. The booster cell increases the sensitivity of the meter an additional 6 times. An incident light attachment comes with the Leica-Meter "MC". You need no carrying case for the Leica-Meter "MC", because the Eveready case for the M 3 holds the camera with meter attached.

<i>Catalog Number</i>	<i>Code Word</i>	<i>Item</i>	<i>Retail Price</i>
16,220		Leica-Meter "MC" without booster cell or case, but with incident light attachment.....	\$33.00
16,221		Leica-Meter "MC" with booster cell, booster cell case and incident light attachments, but without meter case.....	39.00
16,225	METWMT	Leica-Meter 2 with booster cell, retainer plate, carrying chain, and leather cases for meter and cell (Meter Case is Eveready type).....	24.00
16,230	METNBC	Leica-Meter 2 without booster cell but with Eveready case, retainer plate, and carrying chain.....	18.00
16,235	MBOOWT	Booster Cell for Leica-Meter 2 with leather case.....	7.50
16,222		Booster Cell for Leica-Meter "MC" with case and incident light attachment.....	7.50

Replacement and Accessory Parts

16,018	MBOOW	Booster Cell for Leica-Meter "M".....	7.50
16,218	METRIL	Incident Light Attachment for Leica-Meter "M".....	.90
16,240	METMIL	Incident Light Attachment for Leica-Meter 2.....	.75
16,245	METBIL	Incident Light Attachment for Leica-Meter 2 booster cell.....	.90
16,250	METRPC	Retaining Plate and carrying chain for Leica-Meter 2.....	.75
14,646	EDOOF	Leather Case for Leica-Meter "M".....	3.90
14,648	CASCEL	Leather Case for Leica-Meter "M" booster cell.....	.60
16,255	METECT	Eveready Case for Leica-Meter 2.....	1.50
16,260	METCBT	Case for Leica-Meter 2 or "MC" booster cell.....	.60
10,027	CLIPP	Shoe for mounting Leica-Meters (except models "M" and "MC") on cameras of larger size.....	1.20

ATTACHMENTS

(Small Accessories)



The Leica System of Photography gets its tremendous versatility from the many well-engineered accessories which it offers you. There is hardly a field of photography in which you cannot excel with your Leica. The many accessories available to the Leica owner are for handling those unusual or specialized situations which he is likely to encounter. This listing of small accessories supplements the more specialized items listed under their respective headings.

Leicavit Rapid Winder

Catalog Number	Code Word	Item	Retail Price
16,010	ASKOO	Self-Timing Device having a delay of approximately 12 seconds between tripping and exposure, in leather case.	\$ 7.56
16,000	APDOO	Self-Timing Device without case.	6.66
14,645	APOOM	Leather Case for Self-Timing Device.90
16,011	HEBOO	Slow Speed Attachment with speeds of 1, $\frac{1}{2}$, $\frac{1}{4}$, and $\frac{1}{8}$ second fitting Leica cameras which do not have built-in slow speeds.	22.50
16,015	SYOOM	Leicavit Rapid Winder , manually operated, for sequence photography. Replaces Leica baseplate. (Cannot be used on Leica M 3 or cameras with serial numbers below 400,000).	24.00
10,100	FSIWKR	Film Speed Indicating Winding Knob adjustable to indicate speed of film in both A.S.A. and Weston ratings, showing RED for color and BLACK for other film; as supplied on Leica models If, IIf, and IIIf. For interchanging with non-indicating winding knob on Leica cameras with serial numbers over 400,000.	2.10
14,057	ORAKO	Orange Rangefinder Filter (slip on) for Leica Camera Models II, III and IIIa (10mm diameter).	2.70
14,058	OKARO	Orange Rangefinder Filter (slip on) for Leica Camera Models IIc, IIf, IIIb, IIIc and IIIf (11mm diameter).	2.70
14,021	SVOOP	Take-up Spool with locking pop-up knob for all Leica cameras except Leica M 3.	2.40
14,022	SPOOM	Take-up Spool with pop-up knob for Leica M 3.	2.40
14,070	FINOT	Cable Release (10 inches) with locking screw for all Leica cameras except Leica M 3.	1.20
14,067	FONOT	Cable Release (10 inches) with locking screw for Leica M 3.	1.05
14,075	OPKOM	Cable Release (20 inches) with locking screw for all Leica cameras except Leica M 3.	1.62

Catalog Number	Code Word	Item	Retail Price
14,080	FIDRI	Cable Release (10 feet) for all Leica cameras except Leica M 3.	10.50
14,084	MQUOO	Mouth Release fitting all Leica cameras except Leica M 3. Permits release of shutter by closing teeth on clamp. Complete with 11" cable release. (Ideal for tripping shutter when holding off-camera flash or for handi-capped persons).	1.80
14,085	OZWTO	Double Cable Release for Visoflex and any Leica (except Leica M 3).	7.50
14,083	OZWTO-M	Double Cable Release for Visoflex and Leica M 3.	7.50
14,086	OZXVO	Release Coupling for Visoflex and any Leica (except Leica M 3). Single-button hand or cable release operation.	9.00
14,087	OZXVO-M	Release Coupling for Visoflex and Leica M 3. Single-button hand or cable release operation (NOT YET AVAILABLE).	9.60
14,088	OZTNO	Release Adapter. Adapts Visoflex Double Release OZWTO and camera Cable Releases FINOT, OPKOM and FIDRI to Leica M 3.60
14,090	TRPOO	Neck Strap for all Leica cameras (except M 3); with safety hooks.	2.10
14,092	TRPOO-M	Neck Strap for Leica M 3; with safety hooks.	2.10
14,095	TROOV	Camera Sling with safety lock for holding camera steady.	2.55
14,110	TOOQE	Table Tripod with small ball-and-socket tripod head.	10.50
14,100	TOOUG	Table Tripod without ball-and-socket head.	5.70
14,105	FOOMI	Ball-and-Socket Tripod Head, small.	4.80
14,115	KGOON	Ball-and-Socket Tripod Head, large rigid construction, with built-in adapters for European and ASA Tripod Threads.	9.00

CORRECTION LENSES

¶ *When ordering correction lenses it is necessary that prescription be provided for the eye used.*

14,060	OPRTO	Correction Lenses for Leica models IIIb, IIc, IIIc, IIIf, and IIIf. To correct near and far sightedness.	\$9.00
14,065	OPSVO	Correction Lenses for Leica models IIIb, IIc, IIIc, IIIf, and IIIf. To correct astigmatism.	10.50
14,061	ORTOX	Correction Lenses for Leica M 3. To correct near and far sightedness.	9.00
14,062	ORLEO	Correction Lenses for Leica M 3. To correct astigmatism.	13.50

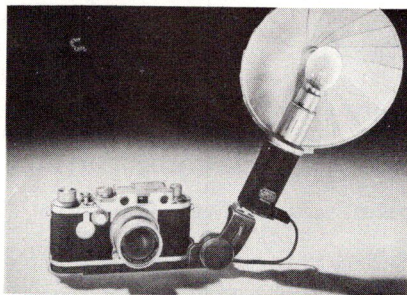
FLASH EQUIPMENT

You can choose between two basic types of flash equipment for your Leica—conventional and electronic. Each has its advantages. Leica flash units for conventional flash bulbs (the CEYOO and the Chico) are extremely small and light. They are very easy to carry and their cost is modest. Operating power comes from a 22½ volt battery-capacitor.

The Braun Hobby Electronic Flash Units although somewhat bulkier and more expensive than the conventional units, have repeating flash tubes good for more than 10,000 flashes. They soon pay for themselves since they end your flashbulb expense forever.

CEYOO FLASH UNIT

This flash unit for conventional bulbs is so popular that we have adapted it for use on other cameras besides the Leica. The various adaptations consist of the basic CEYOO unit with a special connecting cord fitting the specific type of camera listed. (The only exception is flash unit CEYOSR which has no connecting cord; it has a special foot which makes the electrical contact.) The connecting cords furnished with the flash units for the Leica come with a removable female socket for use with electronic flash equipment.



Leica IIIIf with CEYOO Flash Unit in Angle Bracket

The folding reflector of your CEYOO unit slips off the gun for compact storage and you can easily adjust it in height for centering to different bulbs. Its special matt finish gives even illumination even when you use a wide-angle lens. The bulb holder has a removable bayonet socket with ejector button. A big advantage of the CEYOO is that it takes screw base bulbs as well as bayonet base bulbs for those times when you need high light output. What's more, you get a test lamp with each unit to assist you in checking electrical connections.

EXTENSION FLASH

Frequently you will find it desirable to locate the flash unit at a distance from your camera. All you will need for this purpose is one or more 5 foot extension cords which you put between the unit and the connecting cord at the camera. Extension flash gives you flexibility of light placement for better modeling, bounce light and special effects.

MULTIPLE FLASH

Multiple flash is the firing of two or more bulbs at the same time. It gives you the flexibility of studio lighting equipment and you can fill in shadows, make highlights or use more than one bulb to evenly light a large area. In picking your multiple flash equipment, you can choose between either the parallel or series systems.

Parallel System

For parallel hook-up, you will need a B-C insert in each CEYOO unit. Units are connected with an extension cord and multiple flash plug. When you work with this system, put a bulb in each unit and allow at least 10 seconds charging time before you connect the units to each other. Otherwise premature firing may result.

Series System

Some photographers prefer a series circuit for multiple flash work. With a series hook-up premature firing is impossible. Also, you can insert bulbs either before or after you connect up the units. You will need one complete flash unit with a B-C insert at the camera and one additional unit (in which you have replaced the B-C insert with a series insert) for each extra lamp. Connect these units with an extension cord and series flash plug.

If you prefer the series system, there is a Multiple Flash Kit for your convenience. It contains a CEYOO flash unit in which a Series Insert replaces the B-C series, a five foot extension cord and a Series Flash Plug.

CEYOO FLASH UNITS

<i>Catalog Number</i>	<i>Code Word</i>	<i>Item</i>	<i>Retail Price</i>
16,020	CEYOO	Flash Unit with connecting cord fitting Leica models If, IIf and IIIf.	\$ 24.00
16,090	CNOOS	Connecting Cord for Leica models If, IIf and IIIf; with removable female socket. Supplied with flash unit 16,020.	3.30
16,025	ZIOOQ	Adapter for mounting flash unit in accessory clip of Leica If.	1.50
16,150	CEYOO-MOONZ	Flash Unit with connecting cord fitting Leica model M 3.	24.00
16,091	MOONZ	Connecting Cord for Leica model M 3. Supplied with flash unit 16,150	3.30
16,021	CEYOSR	Flash Unit for Stereo Realist and Graflex-22; without connecting cord, but with special foot.	24.00
16,130	CEYOPC	Flash Unit with connecting cord fitting shutters having Continental-type (P-C) outlet.	24.00
16,096	COOSX	Connecting Cord for connecting CEYOO flash unit to shutters having Continental-type (P-C) outlet. Supplied with flash unit 16,130.	3.30
16,135	CEYODP	Flash Unit with connecting cord fitting shutters having ASA double-post outlet.	24.00
16,140	CEYOBT	Flash Unit with connecting cord fitting shutters having ASA bayonet-type outlet.	24.00
16,145	CEYOKE	Flash Unit with connecting cord fitting Kine Exakta and Exa cameras.	24.00
16,024	CEYSMF	Multiple Flash Kit for series connection (CEYOO Flash Unit and reflector, Series Insert, Series Flash Plug, 5 foot extension cord).	27.00
16,082	SMFIBH	Series Insert for series flash. Supplied with multiple kit 16,024.	2.05
16,112	SMFPBC	Series Flash Plug for series connection of multiple flash. Supplied with multiple kit 16,024.	4.80

REPLACEMENT PARTS FOR CEYOO FLASH UNIT

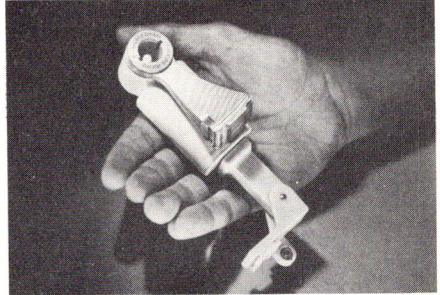
Catalog Number	Code Word	Item	Retail Price
16,060	VLOOF	Folding Reflector, matt finish.....	\$ 6.00
16,062	CQQWO	Bayonet Bulb Adapter with ejector.....	5.40
16,065	COOQW	Test Lamp.....	.25
16,080	COOWZ	B-C Insert with 22½ volt battery.....	3.85
16,070	COOUY	B-C Insert without battery.....	2.70
16,075	COOVM	Battery; 22½ volt for B-C Insert.....	1.25
16,100	CUMOO	Female Socket adapting CEYOO connecting cords to other flash units. Supplied with each CEYOO cord.....	.60

ACCESSORIES FOR FLASH

16,023	LCEYO	Flash Unit CEYOO without connecting cord. Used for multiple flash....	20.70
16,095	COONS	Connecting Cord adapting Leica models If, IIf and IIIf for use with flash units having Continental-type (P-C) connector.....	3.30
16,097	CCDPCE	Connecting Cord for connecting CEYOO flash unit to shutters having ASA double-post outlet. (Supplied with flash unit 16,135).....	5.40
16,098	CCBTCE	Connecting Cord for connecting CEYOO flash unit to shutter having ASA bayonet-type outlet. (Supplied with flash unit 16,140).....	5.40
16,099	CCKECE	Connecting Cord for connecting CEYOO flash unit to EXAKTA and EXA cameras. (Supplied with flash unit 16,145).....	5.40
16,102	COOMU	Male Plug for connecting Ceyoo flash unit to synchronizers of other cameras.....	.90
16,105	COOKT	Extension Cord (5 foot) for extension or multiple flash.....	3.30
16,110	CNXOO	Multiple Flash Plug for parallel connection of multiple flash.....	3.45
16,125	CTOOM	Angle Bracket for mounting flash unit at side of the Leica.....	6.60
10,027	CLIPP	Shoe for mounting flash unit on other than Leica cameras.....	1.20
14,054	IXOOU	Synchro Outlet Cover for Leica M 3.....	.30

CHICO FLASH UNIT

"Chico" is as tiny and attractive as it sounds. But efficient! The small size and high power of bayonet-base flash bulbs coupled with improvements in battery design, give you a huge light output from a vest-pocket flash gun. "Chico" is the last word in compactness and convenience. In a single plastic housing (only $1\frac{1}{2}$ " wide and $3\frac{1}{2}$ " long!) you get a 22 $\frac{1}{2}$ volt Battery-Capacitor, a built-in circuit tester with test lamp and a rectifier for multiple flash. The bayonet-base bulb socket with ejector button and the folding fan-type reflector are part of the housing, too!



"Chico" Flash Unit with Adjustable Holder

Its built-in circuit tester is a unique feature of the "Chico" flash. If you push the test button after you have placed a flash bulb in the socket, a test lamp will shine through the housing. This tells you that your battery and flash bulb are in order. You can also test the synchronizing circuit of your camera. With the unit connected to the camera and a bulb in position (but with the reflector folded) operate the shutter. If the circuit is complete and everything is functioning properly, the test lamp will glow. The flash bulb cannot fire unless the reflector is in open position.

You can put "Chico" in the accessory clip of your camera and connect it with a cord. Or you can use it with an adjustable holder which fits the accessory clip of Leica models IIIf and IIIIf and which connects directly to the synchronizing outlet without a connecting cord. For the Leica models If and M 3 (and for other cameras with a Leica-type accessory clip), you can get a special adjustable holder. Like the one for the IIIIf Leica, it provides angular adjustment of the flash unit. But you will need a connecting cord for it.

For Extension Flash

As with the CEYOO flash, all that you need to fire the "Chico" unit at a distance from your camera is one or more extension cords to connect the unit to your camera. The flash unit has a tripod socket in its base so you can mount it on a tripod for extension or multiple lighting.

For Multiple Flash

You can fire two or more "Chico" units in multiple by connecting them to each other with the proper cords. Unlike the CEYOO unit, "Chico" has no provision for series flash. You will need each unit complete with a battery. However, a rectifier built into each unit prevents premature firing of the bulb—a major advantage of series wiring.

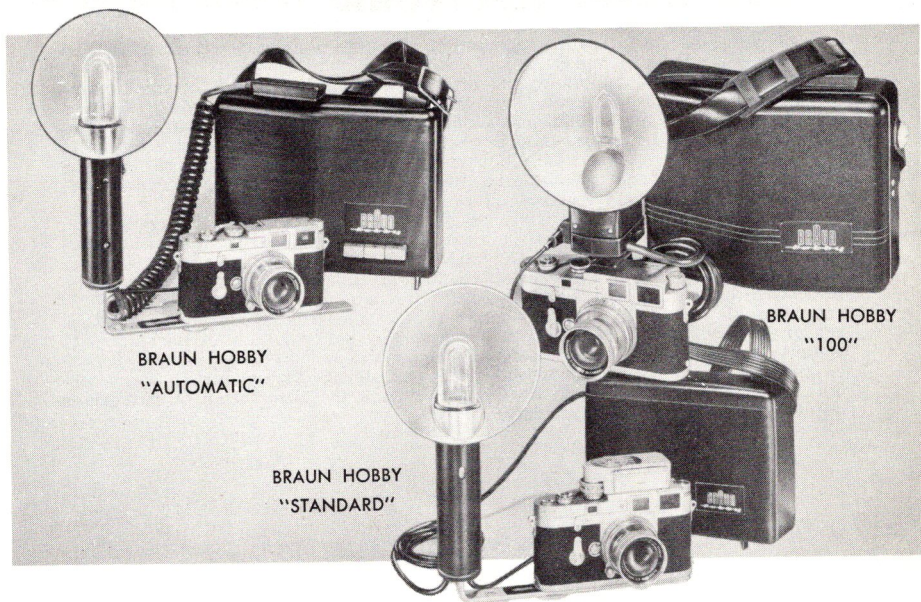
CHICO FLASH UNITS

<i>Catalog Number</i>	<i>Code Word</i>	<i>Item</i>	<i>Retail Price</i>
16,155	DEOOC- DFHOO	Flash Unit with Adjustable Holder fitting Leica models IIf and IIIf. No connecting cord is required.....	\$ 18.00
16,160	DEOOC- DFOOB- MICOO	Flash Unit with Adjustable Holder and Connecting Cord fitting Leica M 3.....	19.50
16,165	DEOOC- DFOOB- COONS	Flash Unit with Adjustable Holder and 17 inch Connecting Cord fitting Leica models If, IIf and IIIf. Flash may be held off camera for bounce or angle lighting.....	19.50
16,170	DEOOC- DFOOB- DGKOO	Flash Unit with Adjustable Holder and Connecting Cord fitting shutters having Continental-type (P-C) outlet.....	18.00

CHICO FLASH UNIT PARTS

<i>Catalog Number</i>	<i>Code Word</i>	<i>Item</i>	<i>Retail Price</i>
16,175	DEOOC	Flash Unit without Adjustable Holder or Connecting Cord.....	\$14.70
16,180	DFHOO	Adjustable Holder for Flash Unit fitting Leica models IIf and IIIf. Connects direct to synchronizing outlet, no connecting cord required..	3.30
16,185	DFOOB	Adjustable Holder for Flash Unit fitting all synchronized models of the Leica and cameras of other makes. (Connecting cord of proper type is required).....	1.50
16,095	COONS	Connecting Cord connecting Flash Unit to synchronizing outlet of Leica models If, IIf and IIIf.....	3.30
16,190	MICOO	Connecting Cord connecting Flash Unit to Leica M 3. (May also be used for connecting Leica M 3 to other flash units having a Continental-type (P-C) connector).....	3.30
16,195	DGKOO	Connecting Cord connecting Flash Unit to shutters having Continental-type (P-C) outlet.....	1.80
16,197	DGKOO- SIXFT	Extension Cord (6 foot) for extension or multiple flash.....	2.70
16,199	TITANI	Multiple Flash Plug (two-way) for parallel connection of multiple flash	1.20
16,200	DHOOA	Battery ; 22½ volt for Flash Unit.....	1.25
16,205	DHMOO	Plastic Box for "Chico" Flash Unit.....	.90
10,027	CLIPP	Shoe for mounting Flash Unit on other than Leica cameras.....	1.20

BRAUN HOBBY ELECTRONIC FLASH UNITS



"Braun Hobby Electronic Flash Units"

The ruggedness and versatility of Braun Hobby electronic flash units make them fitting companions for your Leica.

Each Hobby unit is engineered to meet a special need in flash equipment; each is a product of the well-known electrical firm of Max Braun of Frankfurt, Germany—Europe's largest manufacturer of electronic flash units.

Three Models

The Hobby "Automatic" brings push-button simplicity to electronic flash work. It works on either storage battery or A.C. power—changing from one to the other at the push of a switch. And you can instantly reduce its 100-watt-second brilliance to half-power in cases where full brightness might cause over-exposure.

The Hobby "100" is a truly professional 100-watt-second unit offering dry battery (510 volts) operation in addition to storage battery and A.C. for complete versatility.

The "Standard" offers most of the features of the "100" in a 60-watt-second package that is ideal for amateur use. You can power it with either three size "D" dry cells, storage battery, or A.C. The "Standard" is a fine choice when light weight, versatility, and low initial cost are important.

Each Unit gives you the unique advantage of a variable-beam reflector. With a simple turn of the reflector you can change from the normal 50° coverage to 70° coverage for use with wide-angle lenses. The housings of the "Automatic" and the "100" and the reflector of all three Braun Hobby units are made of handsome black polyamid plastic—twice as light as aluminum yet literally as strong as steel. Extension flash heads to give varied lighting effects are available for both the "Automatic" and the "100" Units.

Which Unit for You?

One of the Braun Hobby units is best for your particular picture-making needs. If you are a casual amateur who likes to picture family events, vacation, and travel scenes, the "Standard" may be just what you are looking for. The three "D" cells are an inexpensive and convenient power source if you prefer to avoid the maintenance a

BRAUN HOBBY ELECTRONIC FLASH UNITS

storage battery demands. The A. C. connection, of course, provides power at virtually no cost wherever outlets are handy.

Serious amateurs, exhibitors, and professionals may prefer the increased power and versatility of the "Automatic" or "100". The "Automatic" is truly a triumph of electronics research and development—a unit whose performance capacities and simplicity of operation are unique in flash photography. You need only push a button to shoot at half power, to operate on A. C. current, or to charge the storage battery. The flash head has a non-tangling coiled connecting cable and the neon "ready" indicator is clearly visible from either the front or back of the flash head.

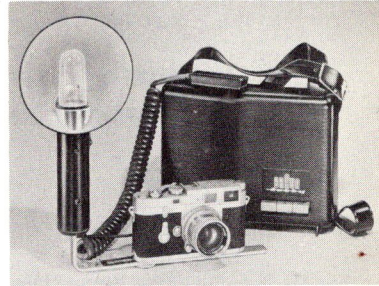
The popular Braun Hobby "100", besides operating on A. C. and storage battery, also accepts a 510 volt dry battery. This offers shorter recycling time than either storage battery or A. C. operation, plus many more flash shots than the storage battery gives without servicing. This is a real advantage to professionals and very active amateurs. But, since the normal life of a high-voltage dry battery, even when it is unused, is only about six months, 510 volt dry battery power is most satisfactory when you take enough shots within a three or four month period to justify the cost of the battery. If you plan to use your unit only occasionally, or don't need more than 80 or 100 flashes on any one shooting session, you may prefer the storage battery for its great economy of operation. The Hobby "100" does not have the push-button or half-power operation features of the "Automatic".

SPECIFICATIONS

	Braun Hobby "Automatic"		Braun Hobby "100"	Braun Hobby "Standard"	
Dimensions:	9" x 6 $\frac{1}{4}$ " x 2 $\frac{3}{4}$ "		8 $\frac{3}{4}$ " x 7 $\frac{1}{2}$ " x 2 $\frac{1}{2}$ "	7 $\frac{3}{4}$ " x 5 $\frac{3}{4}$ " x 3"	
Weight:	With Storage Battery 5 lbs.		With Dry Cell: 4 lbs. 8 oz. With Storage Battery: 5 lbs. 9 oz.	With 3 "D" Cells: 4 lbs. 2 $\frac{1}{4}$ oz. With Storage Battery: 4 lbs. 9 $\frac{1}{4}$ oz.	
Flash Duration:	1/1000th		1/1000th	1/1000th	
Color Temperature:	5600° Kelvin		5600° Kelvin	5600° Kelvin	
Watt Seconds:	<i>Full-Power Position</i>	<i>Half-Power Position</i>	100-110	60	
	105	50			
G U 50° D B E a N m U M B E R	Daylight Kodachrome:	56	1 $\frac{1}{2}$ stops greater	56	35
	Daylight Ansco or Ektachrome:	75	1 $\frac{1}{2}$ stops greater	75	56
	ASA 100 B&W:	180	1 $\frac{1}{2}$ stops greater	180	140
	70° Beam:	1 stop greater	1 stop greater plus above	1 stop greater	1 stop greater
Number of Flashes					
A. C.:	Unlimited	Unlimited	Unlimited	Unlimited	
Dry Cell:			about 750	(3 "D" Cells) 50 (min.)	
Storage Battery:	100-120	170-200	80 per charge	200 per charge	
Recycle Time:					
A. C.:	8-11 seconds		8-11 seconds	10 seconds	
Dry Cell:			6 seconds	15-20 seconds *	
Storage Battery:	8-11 seconds		8-11 seconds	10-12 seconds	
Multiple Flash Head Available:	Yes		Yes	No	
Storage Battery Charger:	Built In		Built into A.C. Power Pack	Accessory	

* With Bright Star Photo Flash Batteries.

BRAUN HOBBY "AUTOMATIC" ELECTRONIC FLASH UNITS



<i>Catalog Number</i>	<i>Code Word</i>	<i>Item</i>	<i>Retail Price</i>
16,470	BHAAWO	Braun Hobby "Automatic" Storage Battery-A.C. Unit. Complete with 4 volt-3 ampere hour storage battery, vibrator and 13-foot line cord; but without camera connecting cord	\$106.00
16,471	BHAALM	With connecting cord fitting Leica M 3.	109.75
16,472	BHAALF	With connecting cord fitting Leica Models If, Iif and IIIf.	109.75
16,473	BHAAPC	With connecting cord fitting shutters having P-C outlets.	108.75
16,474	BHAARR	With connecting cord fitting Rolleiflex and Rolleicord cameras.	109.75

Accessories for the Braun Hobby "Automatic"

16,417	ABHAEF	Multiple Flash Head with 16-foot cord.	27.00
16,400	PCFCEA	Exakta Adapter. Adapts P-C cords for use on Exakta and Exa cameras. (May be used with P-C cords of CEYOO and CHICO flash units)	2.50
16,420	ABHPWB	Plastic Squeeze Bottle with narrow spout and cap. For adding distilled water to storage battery.50
16,341	CTKOO	Connecting Cord (50cm long) for Leica Model M 3.	3.75
16,342	CSOON	Connecting Cord (50cm long) for Leica Models If, Iif, IIIf	3.75
16,343	BRCCPA	Connecting Cord (40cm long) for Continental-type (P-C) outlet.	2.75
16,344	BRCCRA	Connecting Cord (80cm long) for Rolleiflex and Rolleicord cameras.	3.75

NOTE: Domestic cords can be used with ASA synchronizer outlets.

Replacement Parts for the Braun Hobby "Automatic"

16,430	RBHPFC	Fuse (300 ma)15
		(Available to dealers only in packages of 10 fuses each)	
16,435	CBHSSB	Storage Battery; 4 volt, 3 ampere-hour.	9.00
16,436	RBHSBV	Vibrator, with muffler	8.00
16,410	LCBHAU	Line Cord (13-foot)	2.25

BRAUN HOBBY "100" ELECTRONIC FLASH UNITS



Catalog Number	Code Word	Item	Retail Price
16,300	BHDBWO	Braun Hobby "100" Dry Battery Unit. Complete with 510 volt battery ; but without camera connecting cord	\$86.20
16,301	BHDBLM	With connecting cord fitting Leica M 3	89.95
16,302	BHDBLF	With connecting cord fitting Leica Models If, IIf, and IIIf	89.95
16,303	BHDBPC	With connecting cord fitting shutters having P-C outlets	88.95
16,304	BHDBRR	With connecting cord fitting Rolleiflex and Rolleicord cameras	89.95
16,310	BHACWO	Braun Hobby "100" A.C. Unit. Complete with A.C. power pack and 12-foot line cord ; but without camera connecting cord	81.25
16,311	BHACLM	With connecting cord fitting Leica M 3	85.00
16,312	BHACLF	With connecting cord fitting Leica models If, IIf and IIIf	85.00
16,313	BHACPC	With connecting cord fitting shutters having P-C outlets	84.00
16,314	BHACRR	With connecting cord fitting Rolleiflex and Rolleicord cameras	85.00
16,320	BHWCWO	Braun Hobby "100" Storage Battery-A.C. Unit. Complete with 4 volt-2.4 ampere hour storage battery, A.C. power pack, vibrator and 12-foot line cord ; but without camera connecting cord	96.00
16,321	BHWCLM	With connecting cord fitting Leica M 3	99.75
16,322	BHWCLF	With connecting cord fitting Leica models If, IIf and IIIf	99.75
16,323	BHWPCPC	With connecting cord fitting shutters having P-C outlets	98.75
16,324	BHWCRR	With connecting cord fitting Rolleiflex and Rolleicord cameras	99.75
16,330	BHBWUO	Braun Hobby "100" Basic Unit. Complete with spring pressure plate, battery spacing block and battery positioning shield ; but without battery, power pack, vibrator, line cord or camera connecting cord	70.25
16,331	BHBULM	With connecting cord fitting Leica M 3	74.00
16,332	BHBULF	With connecting cord fitting Leica models If, IIf and IIIf	74.00
16,333	BHBUPC	With connecting cord fitting shutters having P-C outlets	73.00
16,334	BHBURR	With connecting cord fitting Rolleiflex and Rolleicord cameras	74.00
Accessories for Braun Hobby "100"			
16,415	ABHMFH	Multiple Flash Head with 15 foot cord	27.00
16,341	CTKOO	Connecting Cord (50cm long) for Leica model M 3	3.75
16,342	CSOON	Connecting Cord (50cm long) for Leica models If, IIf and IIIf	3.75
16,343	BRCCPA	Connecting Cord (40cm long) for Continental-type (P-C) outlet	2.75

Catalog Number	Code Word	Item	Retail Price
16,344	BRCRA	Connecting Cord (80cm long) for Rolleiflex and Rolleicord cameras . .	3.75

NOTE: Domestic cords can be used with ASA synchronizer outlets

16,400	PCFCEA	Exakta Adapter. Adapts P-C cords for use on Exakta and Exa cameras. (May be used with P-C cords of CEYOO and CHICO flash units)	2.50
--------	--------	--	------

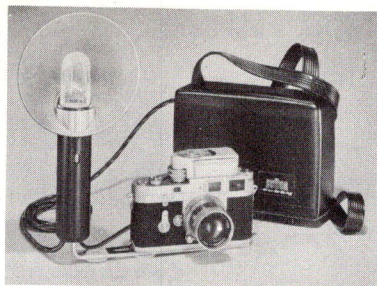
Conversion Parts for Braun Hobby "100"

16,405	CPBHAC	For A.C. operation: Power Pack complete, but without line cord	8.75
16,407	CPBHW	For Storage Battery—A.C. operation: Power Pack complete with vibrator and 4 volt storage battery, but without line cord	23.50
16,409	CPBHCL	Line Cord (12 foot). Necessary for A.C. operation and when recharging storage battery in power pack	2.25

Replacement Items for Braun Hobby "100"

16,430	RBHFFC	Fuse (300 ma)15
16,432	RBHEDB	Dry Battery; 510 volts (Eveready No. 497)	15.95
16,434	RBHWSB	Storage Battery; 4 volt, 2.4 ampere hour	9.00
16,436	RBHSBV	Vibrator, with muffler	8.00
16,409	CPBHCL	Line Cord (12 foot)	2.25
16,441	RBHBPI	Spacing Inserts (set of 2) for positioning dry battery50
16,442	RBHSPP	Spring Pressure Plate for power pack or dry battery50
16,444	RBHCBA	Camera Bracket for mounting flash head at side of cameras other than Leica	2.00
16,445	RBHLCB	Camera Bracket for mounting flash head at side of Leica camera	4.50
16,446	RBHFHB	Flash Head Bracket for mounting flash head on camera or camera bracket50
16,448	RBHFOC	Protective Cover for flash head outlet25
16,450	RBHPAC	Cover Plate for A.C. outlet15
16,452	RBHATS	Tripod Screw (American Standard) for fastening camera bracket to camera25
16,454	RBHTSE	Tripod Screw (European Standard) for fastening camera bracket to camera25

BRAUN HOBBY "STANDARD" ELECTRONIC FLASH UNITS Basic Unit



Catalog Number	Code Word	Item	Retail Price
16,460	BHSEWO	Braun Hobby "Standard" Unit complete with vibrator and A.C. line cord (4½ foot) but without battery or camera connecting cord	\$55.50
16,461	BHSELM	With connecting cord fitting Leica M 3	59.25
16,462	BHSELF	With connecting cord fitting Leica models If, IIf and IIIf	59.25
16,463	BHSEPC	With connecting cord fitting shutters having P-C outlets	58.25
16,464	BHSEBR	With connecting cord fitting Rolleiflex and Rolleicord cameras	59.25

Accessories For Braun Hobby "Standard"

16,435	CBHSSB	Storage Battery; 4 volt, 3 ampere-hour	9.00
16,438	ABHIBC	Battery Charger. Interchangeable with vibrator	2.25
<i>Note: The two items above are needed for wet cell operation.</i>			
16,400	PCFCEA	Exakta Adapter. Adapts P-C cords for use on Exakta and Exa cameras. (May be used with P-C cords of CEYOO and CHICO flash units)	2.50
16,341	CTK00	Connecting Cord (50cm long) for Leica Model M 3	3.75
16,342	CS00N	Connecting Cord (50cm long) for Leica Models If, IIf, IIIf	3.75
16,343	BRCCPA	Connecting Cord (40cm long) for Continental-type (P-C) outlet	2.75
16,344	BRCRA	Connecting Cord (80cm long) for Rolleiflex and Rolleicord cameras	3.75

NOTE: Domestic cords can be used with ASA synchronizer outlets.

Replacement Parts for the Braun Hobby "Standard"

16,408	LCBHSR	Line Cord (4½ foot). Necessary for A.C. operation and when recharging storage battery in unit (as replacement)	1.80
16,436	RBHSBV	Vibrator, with muffler	8.00

LENS PROTECTION COVERS

Protect the quality and performance you bought when you chose your Leica lens. Even when it is in its own or the Eveready case, it can pick up dirt, moisture or small scratches on the front or rear surfaces;—and they can affect its fine performance. Each Leica lens has a front cap when you buy it; put a rear cap on it when you carry it separate from the camera.

Many owners carry a second Leica without a lens, interchanging lenses between cameras as needed. If you do this, protect the interior of your Leica with a lens opening cover.



Rear Lens Cover and Front Lens Cap

FRONT COVERS

Catalog Number	Code Word	Item	Retail Price
14,025	ORVZO	Front Lens Cap , chrome plated, fitting 28mm Hektor, 35mm Elmar and Summaron, 50mm and 90mm Elmar, and 135mm Hektor screw-mounting lenses.	\$.75
14,030	ORSTO	Front Lens Cap , chrome plated, fitting 50mm Summitar lens.84
14,031	ORQDO	Front Lens Cap , chrome plated, fitting 50mm Summicron and all bayonet-mounting Leica lenses except 50mm Summarit lens.84
14,035	ORXDO	Front Lens Cap , chrome plated, for 50mm Summarit lens.84
14,040	ORPNO	Front Lens Cap , chrome plated, for 85mm Summarex and 125mm Hektor lenses.96
14,045	TNOOZ	Front Lens Cap , black finish, for 200mm Telyt lens.84
14,046	TNOOQ	Front Lens Cap , black finish, for 400mm Telyt lens.	2.52
14,047	OIWKO	Front Lens Cap , chrome plated, for Stemar stereo attachment.	2.10

REAR COVERS

14,050	ORYFO	Rear Lens Cover , chrome plated, for all screw-mounting Leica lenses and Visoflex.	\$.75
14,051	IZQOO	Rear Lens Cover for all bayonet-mounting lenses and Visoflex.90
14,053	HGOOI	Rear Lens Cap , chrome plated (large diameter), for 125mm Hektor; fitting inverted lens hood.	1.80
14,048	OIXMO	Rear Dust Cap , chrome plated, for screw-mounting Stemar stereo attachment.	1.20
14,049	OIVHO	Rear Dust Cap , chrome plated, for bayonet-mounting Stemar stereo attachment.	1.80
14,052	OIZQO	Rear Dust Cap for Stemar Stereo Prism Attachment.	1.80

CAMERA COVERS

14,055	ORTVO	Lens Opening Cover , chrome plated, for Leica cameras having threaded lens flange.75
14,056	IVZOO	Lens Opening Cover for Leica cameras having bayonet-type lens flange.	1.05

CLOSE-UP PHOTOGRAPHY

Photographing small objects at close range is one of the most fascinating branches of photography. With your Leica you can record a rare document or copy an entire book; you can capture the intricate design of an insect's wing or the intriguing precision of a small industrial part. The detailed beauty in the close-up of a flower can only be described photographically. Also, you will find that photography through a microscope is as thrilling as it is useful.

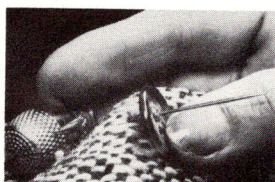
The Leica system of photography is completed by its accessories for close-up and photomicrography. As in other branches in which the Leica excels, you will find not one, but a whole group of accessories from which you can choose.

The equipment for close-up photography (with one exception) is built around those models of the Leica that have screw-mounting interchangeable lenses. As we go to press, the Leica M 3 is too new for close-up accessories to have been designed for it. However, you can get the Visoflex housing with bayonet-mounting to use on the M 3 with the Bellows attachment and accessories (except the Focalslide).

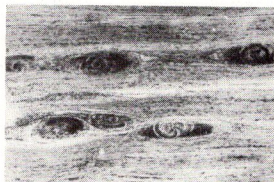
Close-Up photography falls into three classifications:



Gross photography.—Photography at distances between the minimum focusing range of the lens and natural size (image size = object size).



Macrophotography.—Photography at magnifications on the negative (larger than natural size) without the aid of a microscope.



Photomicrography.—Photography at high magnifications using a microscope. The Leica lens is not used, but is replaced by the optical system of the microscope.

You can do close-up photography by either of two methods—optical or increased extension (lens-to-film distance):

Optical.—This method calls for supplementary front lenses which you put in front of the Leica lens. Front lenses cost little but are limited in scope. To focus and frame your subject, you must refer to tables.

Increased extension.—Increased extension just means moving the lens farther from the film. You do it by using extension tubes of fixed lengths, focusing mounts of variable length or an adjustable bellows. The ground-glass focusing screens of the Visoflex and Focalslide let you focus the image sharply and frame your subject precisely. Macrophotographs are always made by increasing the distance between the lens and focal plane.

Close-up equipment which increases extension can be further divided into two groups—fixed focus and variable focus. The fixed units have limited applications. They are designed for portability. But those with variable extension are universal in use. The Bellows Focusing Device and the Focalslide with its accessories are of this type. The Reproduction units also work on the principle of increasing extension.

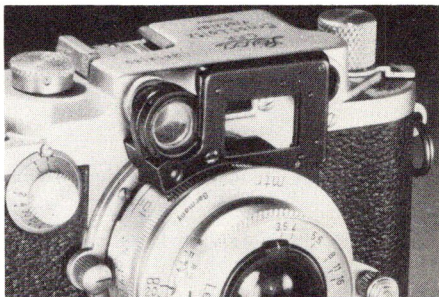
Photomicrography falls into a different category since you do not use the camera lens. The primary function of the camera is to transport the film. Here, again, you will find several different set-ups and accessories from which you can choose to best meet your individual requirements.

Close-ups and photomicrography with the Leica are simple and uncomplicated. What's more, while they are essential to industry and research, they are also gaining popularity as a hobby.

OPTICAL CLOSE FOCUSING DEVICES

The Optical Close Focusing Devices, although they increase extension between lens and focal plane, are classed as optical units. They make use of the camera's coupled rangefinder and built-in viewfinder. A moving optical wedge adapts the rangefinder for close distances and a mask in front of the viewfinder automatically compensates for parallax and reduced field of view.

The unit screws into the lens flange of any Leica which has a coupled rangefinder (except the model M 3) and focuses to any distance between 3½ feet and 16½ inches. Ratios of reproduction from 1:17.5 to 1:6.5 are engraved on the focusing mount and areas from 1'5" x 2'1" to 6½" x 9½" can be covered.



Close Focusing Device NOOKY

Catalog Number	Code Word	Item	Retail Price
16,500	NOOKY	Close Focusing Device for 50mm Elmar f/3.5 lens.....	\$ 31.50
16,502	SOOKY	Close Focusing Device for 50mm Summicron f/2 lens.....	33.00
16,505	NOOKY-HESUM	Close Focusing Device for 50mm Summar or Summitar f/2 lens.....	31.50

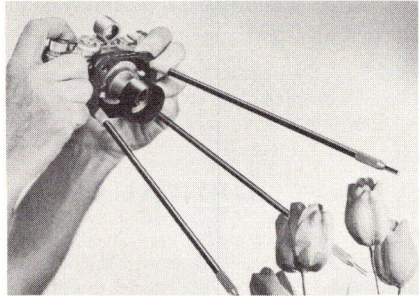
SUPPLEMENTARY LENSES

The Front Lenses screw into the threaded flange of the 50mm Elmar f/3.5 screw-mounting Leica lens. You focus by measuring from the back of the camera to the object. Lens settings, working distances and areas covered are obtained from the tables supplied with each supplementary lens.

16,530	ELPRO	Front Lens I. Covers areas from 16¾" x 24¼" to 8¾" x 12¾".....	\$ 6.00
16,535	ELPIK	Front Lens II. Covers areas from 8¾" x 12½" to 5½" x 8½".....	6.60
16,540	ELPET	Front Lens III. Covers areas from 4¼" x 6¾" to 3¾" x 5".....	8.40
16,550	VMCOO	Front Lens Adapter for using Elmar front lenses on 50mm Summar f/2 Leica lens.....	1.05

FIXED FOCUS UNITS

The Auxiliary Reproduction Units are fixed focus devices for copying and the photography of small objects. Their small size makes them ideal for use in libraries and when traveling. You can use them on any Leica that has the interchangeable lens feature (except the model M 3). Correct focusing distance and area covered are established by legs which you place against the object being photographed. Extension tubes or rings of fixed length are placed between the camera and its lens.

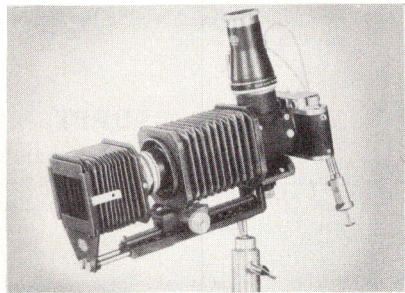


Auxiliary Reproduction Unit BOOWU

Catalog Number	Code Word	Item	Retail Price
16,510	BELUN	Auxiliary Reproduction Unit (1:1) for 50mm Elmar f/3.5 lens. Covers an area of 1" x 1½"	\$ 12.00
16,515	BELUN-HESUM	Auxiliary Reproduction Unit (1:1) for 50mm Summarit f/2 lens. Covers an area of 1" x 1½"	12.00
16,520	BEHOO	Auxiliary Reproduction Unit (1:1.5-1:2-1:3) for 50mm Elmar f/3.5 or Summarit f/2 lens. Covers areas of 1½³/₃₂" x 2½¹/₈", 1⁷/₈" x 2²⁷/₃₂" and 2²⁷/₃₂" x 4¹³/₃₂"	15.00
16,525	BOOWU	Auxiliary Reproduction Unit (1:4-1:6 1:9) for all 50mm screw-mounting Leica lenses. Covers areas of 4½¹/₈" x 5¾", 5¾" x 8¼" and 8¼" x 11½"	24.00

BELLOWS EQUIPMENT

The Bellows Focusing Device (used with the Visoflex or Focaslide) is a versatile accessory for close-up photography. It provides variable extension between the lens and focal plane of your Leica and adjusts by rack and pinion. You can use any Leica lens with this device, within certain focusing ranges. However, it is designed for most efficient use with the Visoflex and lens unit of the 135mm Hektor or with the Focaslide and 50mm Elmar, Summarit or Summicron lens. Two direct-reading scales on the bed of the Bellows Attachment show the ratio of reproduction and exposure factor at any setting for 50mm and 135mm lenses.



Bellows Focusing Device with Bellows Sunshade

The Visoflex used with the Bellows is the same model you use with short-mounted Leica lenses. Combined with the Bellows and 135mm Hektor lens it gives you continuous focus from infinity to 1:1 (natural size). You view the image on the ground-glass of the Visoflex up to the instant of exposure.

When using the Focaslide with the Bellows and 50mm lens, you obtain continuous focus from a ratio of 1:17 (16 x 24 inches) to a magnification of 2.5 times ($\frac{3}{8} \times \frac{9}{16}$ inches). After focusing the image on the ground-glass of the Focaslide, you slide your Leica into position behind the lens and make the exposure. The Focaslide is suitable for use with the Bellows when photographing inanimate objects. But due to the time delay between focusing and exposing, we recommend the Visoflex for pictures of subjects that are likely to move.

The various lens adapters which you can get for the Bellows are interchangeable, screwing into the front of the assembly. Those for the 50mm lenses hold the lens in collapsed position by a bayonet catch. Two-piece adapters for the 135mm Hektor and 90mm Elmar lenses serve two purposes. First they adapt the front of the Bellows Focusing Device to accept a Leica lens screw thread. And a tubular section provides the proper lens extension for infinity-to-1:1 focusing with the Bellows Device. Removing the tubular section exposes a Leica thread into which you can put screw-mounting Leica lenses or longer extension tubes.

The Bellows Focusing Device has a bushing for mounting it on a tripod or, with an adapter, on carrying arms which fit the uprights of Leitz enlargers. For critical focusing when you work at predetermined ratios, you can screw the Rack and Pinion Fine Adjustment (with adapter plate) into the tripod bushing and mount the entire unit on a tripod or carrying arm.

Catalog Number	Code Word	Item	Retail Price
16,555	UXOORHE	Bellows Focusing Device with adapter for 135mm Hektor lens.	\$ 58.50
		<i>135mm Hektor lenses with serial numbers below 241,000 cannot be used with the Bellows Focusing Device.</i>	
11,055	OZYXO	Visoflex , screw-mounting; with 5X wide-field magnifier and double cable release.	102.00
16,710	OZUPO	Visoflex , screw-mounting; without magnifier but with double cable release.	81.00
11,155	OZYXO-M	Visoflex , bayonet-mounting; with 5X wide-field magnifier and double cable release.	105.00
16,712	OZUPO-M	Visoflex , bayonet-mounting; without magnifier but with double cable release.	84.00
14,085	OZWTO	Double Cable Release for Visoflex and any Leica (except Leica M 3)	7.50
14,083	OZWTO-M	Double Cable Release for Visoflex and Leica M 3.	7.50
14,086	OZXVO	Release Coupling for Visoflex and any Leica (except Leica M 3). Single-button hand or cable release operation.	9.00
14,088	OZTNO	Release Adapter. Adapts Visoflex Double Release OZWTO and camera Cable Releases FINOT, OPKOM, and FIDRI to Leica M 3.60
14,087	OZXVO-M	Release Coupling for Visoflex and Leica M 3. Single-button hand or cable release operation (NOT YET AVAILABLE).	9.60
16,625	LVFOO	Wide-Field Magnifier (5X) for Visoflex.	21.00
16,725	PEGOO	Wide-Field 45° Magnifier (4X) for Visoflex. The image is erect and laterally correct.	45.00
16,560	UXOOREL	Bellows Focusing Device with adapter for 50mm Elmar lens.	58.50
16,605	OOZAB	Focaslide for use with Leica cameras (except model M 3).	36.00
16,565	UZEOO	Bellows Lens Hood (with removable mask) for 50 and 90mm Elmar and 135mm Hektor screw-mounting lenses only.	16.50
16,567	UZEOO-M	Bellows Lens Hood (with removable mask) for bayonet mounting 135mm Hektor lens.	16.50
16,570	UOOST	Divisible Adapter fitting 135mm Hektor lens unit to bellows. (Lenses having serial numbers 245,000 to 245,800 or lower than 241,000 must be sent to Service Department for fitting).	4.80
16,572	UOOXI	Adapter fitting 125mm Hektor lens to bellows.	2.70

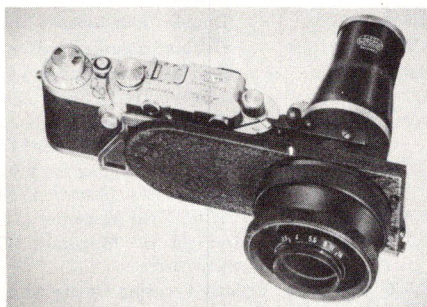
<i>Catalog Number</i>	<i>Code Word</i>	<i>Item</i>	<i>Retail Price</i>
16,575	UOOTG	Divisible Adapter fitting any rigid 90mm Elmar lens unit to bellows.	4.80
16,595	UYCOO	Bayonet Adapter fitting 50mm screw-mounting Elmar lens to bellows.	4.80
16,596	UOOND	Bayonet Adapter fitting 50mm bayonet-mounting Elmar or Summicron lens to bellows.	6.90
16,597	USOOR	Bayonet Adapter fitting 50mm Summitar lens to bellows.	4.80
16,590	UOOYW	Adapter Ring fitting Leica lenses or extension tubes to bellows.	3.45
16,580	UOOVH	Special Extension Tube fitting 135mm Hektor lens unit to bellows adapter ring. (Lenses having serial numbers 245,000 to 245,800 or lower than 241,000 must be sent to Service Department for fitting) ..	1.35
16,585	UOOWV	Special Extension Tube fitting 90mm Elmar lens unit to bellows adapter ring.	1.35
16,620	VALOO	Diaphragm Adjusting Ring for screw-mounting 50mm Elmar lens. Settings are indicated by click stops and are visible from the side.	6.60
16,600	UWYOO	Adapter Plate fitting bellows to carrying arms for use on enlarger up-rights, Rack and Pinion Fine Adjustment or Valoy II Enlarger carrying arm with adapter UWOOS (page D 8).	2.10
16,700	YR00F	Rack and Pinion Fine Adjustment for Bellows Focusing Device or Focalslide.	25.50
14,650	UYOOQ	Fiber Case fitted for Bellows, Visoflex, Focalslide, Leica and accessories. .	12.00

FOCASLIDE EQUIPMENT

The Focalslide is the most versatile accessory made for close-up and macrophotography. You can even adapt it for photomicrography! It is the basis of all Reproduction Units (described later) except the Reprovit II, and even this uses a focusing stage similar to the Focalslide.

The Leica (held on the sliding upper plate of the Focalslide), has its film in the same plane as the ground-glass focusing screen. The lens with its auxiliary focusing mount and extension tubes screws into the lens flange of the lower plate. You focus sharply on the ground-glass and slide the camera into position. Two tripod bushings permit you to mount the Focalslide on a tripod, the Bellows Attachment or carrying arms which fit the enlargers.

Any screw-mounting Leica lens fits the Focalslide, but the 50mm Elmar *f*/3.5 lens is generally recommended. Mounts are available for it as well as the 50mm Summar and Summitar, 90mm Elmar and 135mm Hektor in short mount and 50mm Focotar.



Focalslide with Leica IIIIf

RATIOS OF REPRODUCTION AND AREAS COVERED	LENS	FOCASLIDE WITH	RATIOS	AREAS	
				LARGEST	SMALLEST
	50mm Elmar	Helical Mount	1:17 to 1:2	16" x 24"	1 ²⁹ / ₃₂ " x 2 ¹³ / ₁₆ "
	50mm Elmar	Helical Mount + Repro Tube	1:2 to 1:1	1 ²⁹ / ₃₂ " x 2 ¹³ / ₁₆ "	1" x 1 ¹ / ₂ "
	50mm Summar or Summitar	Intermediate Mount + tubes B, F and G	1:14.5 to 1:1	14" x 21"	1" x 1 ¹ / ₂ "
	90mm Elmar	Short Mount	∞ to 1:10(3 ¹ / ₂ ')	∞	9 ¹ / ₂ " x 14 ¹ / ₄ "
135mm Hektor short mounted	50mm Tube	∞ to 1:9(5')	∞	8 ³ / ₄ " x 13"	

FOCASLIDE

Catalog Number	Code Word	Item	Retail Price
16,605	OOZAB	Focalslide for close-up and macrophotography.....	\$ 36.00

AUXILIARY MOUNTS

16,610	ZOOXY	Helical Focusing Mount for 50mm Elmar lens. Adjustable through a range of 22.5mm.....	12.00
16,611	ZOOWL	Helical Focusing Mount for 50mm Focotar f/4.5 lens. Similar to ZOOXY but with Leica lens thread.....	14.40
16,613	ZOOVX	Adapter fitting 50mm Focotar f/4.5 lens to Helical Focusing Mount ZOOXY.....	2.40
16,660	ZOONT	Special Helical Focusing Mount for certain 50mm Elmar lenses of older design with No. 2 or 3 or no number whatever under the infinity lock....	12.00
16,655	ZOOSI-HESUM	Intermediate Focusing Mount with Extension Tubes B, F and G for 50mm Summar or Summitar lens.....	15.30
16,650	ZWTOO-HESUM	Intermediate Focusing Mount for 50mm Summar or Summitar lens as supplied with ZOOSI-HESUM. Adjustable through a range of 8mm	9.90
16,665	ZOOMF	Special Extension Tube (50mm) for short mounted 135mm Hektor lens..	2.70
16,670	COOED	Short Focusing Mount for 90mm Elmar lens.....	16.50

EXTENSION TUBES

You can put extension tubes (individually or in combination) between the Focalslide and focusing mount to get the ratio of reproduction you want. You can also use them with the Bellows, Visoflex or Reproduction Units.

16,635	BOOXZ	Extension Tube B (7mm) as supplied with ZOOSI-HESUM.....	\$ 1.20
16,640	FVOOQ	Extension Tube F (15mm) as supplied with ZOOSI-HESUM.....	1.50
16,615	ROOYH	Repro Extension Tube (26mm) for Helical Focusing Mount.....	2.70

<i>Catalog Number</i>	<i>Code Word</i>	<i>Item</i>	<i>Retail Price</i>
16,645	GVKOO	Extension Tube G (30mm) as supplied with ZOOSI-HESUM.....	2.70
16,646	FUFOR	Extension Tube (45mm).....	3.42
16,647	FULGX	Extension Tube (60mm).....	3.77
16,648	FULHI	Extension Tube (90mm).....	4.44

FOCUSING MAGNIFIERS

Highly corrected magnifiers help you to get sharp focus and exact framing. You must have them for critical work. With the standard magnifier you must move your eye to observe each edge; with wide-field models, you cover the entire focusing screen at a glance. The 30X magnifier is used with the clear central spot in the Focaslide screen for aerial focusing of the image.

The magnifiers fasten securely to the focusing screen by a bayonet catch and (with the exception of the 45° 4X magnifier) are interchangeable among the Focaslide, Visoflex and Reproduction Units. The angular magnifiers are useful when viewing the focusing screen from the side.

16,624	IGCOO	Standard Magnifier (5X).....	\$ 13.50
16,625	LVFOO	Wide-Field Magnifier (5X).....	21.00
16,725	PEGOO	Wide Field 45° Magnifier for Visoflex.....	45.00
16,715	PAMOO	Wide-Field 90° Magnifier (5X).....	30.00
16,720	LWHOO	Magnifier (30X).....	22.50

SUPPLEMENTAL EQUIPMENT

The Carrying Arms let you mount the Focaslide (or Bellows Focusing Device with an adapter) on the upright of your Leitz enlarger, converting it into an efficient copying stand. The Valoy II enlarger needs no special arm, but does need an adapter. The tape measures fastening to the carrying arms are convenient for duplicating a set-up or photographing at a predetermined ratio.

The Rack and Pinion Fine Adjustment can be used with the Focaslide (also the Bellows) and a tripod or the sliding arm. It provides critical camera-to-subject adjustment. You won't need it with the Valoy II carrying arm, however, since this has its own rack and pinion fine adjustment.

The Projection Head fits over the ground-glass screen and replaces the focusing magnifiers. When you turn it on, a focusing pattern in the clear area of the Focaslide screen projects onto the copying board. You adjust the lens until this pattern is sharp. The projected light area outlines the area you want to photograph.

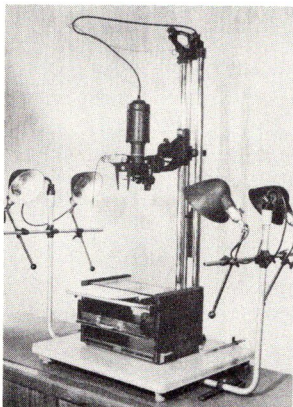
16,680	ROONP	Carrying Arm fitting Focaslide (or Bellows with adapter) to enlargers having a 32mm diameter upright.....	\$ 12.00
16,685	ROOFU	Carrying Arm fitting Focaslide (or Bellows with adapter) to enlargers having a 40mm diameter upright.....	12.00

<i>Catalog Number</i>	<i>Code Word</i>	<i>Item</i>	<i>Retail Price</i>
16,705	XBEET	Adapter , with dovetail slide, fitting Focaslide to arm of Leitz Pillar Stands LURTE or US II.....	\$9.20
16,690	SOOWU	Tape Measure attaching to Carrying Arm ROONP.....	3.30
16,695	TUSOO	Tape Measure attaching to Carrying Arm ROOFU.....	3.30
16,700	YROOF	Rack and Pinion Fine Adjustment for Focaslide or Bellows.....	25.50
16,706	UWOOS	Valoy II Adapter for mounting Focaslide on carrying arm of Valoy II enlarger.....	4.50
16,750	OUTSO	Projection Head with 100 watt lamp for Focaslide or Reprovit II focusing stage.....	33.00
16,620	VALOO	Diaphragm Adjusting Ring for screw-mounting 50mm Elmar lens. Settings are indicated by click stops and are visible from the side.....	6.60

FOCASLIDE OUTFITS

16,630	OOZMY	Focaslide Outfit for screw-mounting 50mm Elmar f/3.5 lens, consisting of Focaslide; Helical Focusing Mount; Rebro Extension Tube; Diaphragm Adjusting Ring; 5X Wide-Field Magnifier and 20 inch cable release.....	79.92
16,631	OZOMSY	Focaslide Outfit for 50mm Summar or Summitar lens. Consisting of Focaslide; Intermediate Focusing Mount with extension tubes B, F and G; 5X Wide-Field Magnifier and 20 inch cable release.....	73.92

VARIABLE FOCUS REPRODUCTION UNITS



Reprovit II

The convenient, versatile Reproduction Units are built around the Focaslide. The difference between them is the type of copying stand, range of coverage and accessories. An exception to this is the Reprovit II.

The Reprovit II rates Special mention as it is a professional unit designed for production work. Its focusing stage, mounted on a counterbalanced carrying arm, has a bellows and rack and pinion adjustment and a scale giving exposure factors and ratios of reproduction. Without additional accessories, areas from 16" x 24" to 1" x 1 1/2" can be covered; by replacing the Focotar lens with a 24mm Micro Summar f/4.5 lens you can make macrophotographs up to 6.5 diameters on the negative. You can even take the focusing stage with bellows off the carrying arm and put it on a tripod for field use. Focus is continuous from infinity to natural size (1:1).

Catalog Number	Code Word	Item	Retail Price
16,736	VALRSX	Basic Reproduction Outfit for 50mm Elmar f/3.5 screw-mounting lens. Covers ratios from 1:13 to 1:2. Consists of Valoy II Copying Stand, Focalslide, Helical Focusing Mount and Standard 5X Magnifier.....	\$113.70
16,676	VALOCS	Valoy II Copying Stand. Consists of baseboard (15½ x 17¾ inches); upright (32 inches high) with guide rail; assembly tool; carrying arm with coarse and fine adjustment and adapter for Focalslide. (Stand can be converted to enlarger by addition of Valoy II Enlarger Head)...	52.20
17,503	VALOEH	Valoy II Enlarger Head; complete with negative carrier and bulb. (Converts Valoy II Copying Stand to enlarger).....	36.30
16,740	OMEXO	Portable Reproduction Outfit for screw-mounting 50mm Elmar f/3.5 lens covering ratios from 1:10 to 1:1 (areas from 9¼ x 14 to 1 x 1½ inches), consisting of Folding Copying Stand OOZEG; Focalslide; Helical Focusing Mount; Large Ball and Socket Tripod Head; Repro Extension Tube; Diaphragm Adjusting Ring; 5X Wide-Field Magnifier; 20 inch cable release and Canvas Carrying Bag.....	163.32
16,730	OOZEG	Folding Copying Stand with calibrated upright 62cm high, calibrated base rod with adjustable feet, carrying arm and two adjustable supporting rods. (Supplied as part of Portable Reproduction Outfit OMEXO).....	54.00
14,655	ONLIO	Canvas Carrying Bag supplied with Portable Reproduction Outfit OMEXO.....	20.40
16,755	ROOSE	Reprovit I Reproduction Outfit for 50mm Elmar lens covering ratios from 1:17 to 1:2. Consisting of Copying Stand OVAFO; Carrying Arm ROOFU; Focalslide; Projection Head; Helical Focusing Mount and Diaphragm Adjusting Ring.....	144.60
16,745	OVAFO	Copying Stand with baseboard 23 x 27 inches and upright 47 inches high, 40mm diameter. Baseboard has rubber supports and built-in change-over switch for switching from focusing light to copying lights. Supplied with Reprovit I.....	45.00
16,760	UVWOO	Lamp Adapter for connecting four copying lamps to change-over switch of Reprovit I.....	2.70
16,795	ROOXU	Reprovit II Reproduction Outfit covering ratios from 1:17 to 1:1. Consisting of Copying Stand RIOOX; Focusing Stage ROOAI; Diaphragm Lever and Operating Guide RDQOO; Projection Head; 50mm Focotar f/4.5 lens DOOCQ; Four-Lamp Illuminator RKCOO and tool for assembling.....	444.15
16,765	RIOOX	Copying Stand with baseboard 23 x 27 inches, rubber supports and built-in change-over switch for switching from focusing light to copying lights; double uprights 47 inches high with self-locking counter-balanced carrying arm for holding Focusing Stage; with tape measure. Supplied with Reprovit II.....	156.00
16,770	ROOAI	Focusing Stage with bellows and rack and pinion adjustment. Supplied with Reprovit II.....	105.00
16,775	RDQOO	Diaphragm Lever and Operating Guide. (Automatically opens lens for focusing, closing to f/11 when exposing.) Supplied with Reprovit II	7.20

<i>Catalog Number</i>	<i>Code Word</i>	<i>Item</i>	<i>Retail Price</i>
16,750	OUTSO	Projection Head with 100 watt lamp for Focaslides or Reprovit II focusing stage.....	33.00
16,781	DOOCQ	Repro 50mm Focotar f/4.5 lens with click stops. (Especially corrected for close distances.) Supplied with Reprovit II.....	43.50
16,785	RKCOO	Four-Lamp Illuminator with 100 watt lamps connecting to change-over switch of Reprovits I and II. Supplied with Reprovit II.....	99.00
16,790	RFOOC	Tool supplied with Reprovit II for assembly.....	.45
17,504	VOOLY	Valoy II Enlarger Head , with adapter, fitting carrying arm of Reprovit II Reproduction Outfit. Converts Reprovit II to an enlarger.....	52.00

SUPPLEMENTAL EQUIPMENT

16,820	SUMAN-ROOZV	24mm Micro Summar f/4.5 with adapter for Reprovit II. Magnifications up to 6.5X are possible.....	75.00
17,675	DOORX	Extension Ring for converting Focotar lens which is supplied with Reprovit II to Focotar lens DOOHF for use with Valoy and Focomat Ic enlargers..	1.50
16,800	RGWOO	Framing Box (11 $\frac{5}{8}$ " x 16 $\frac{5}{8}$ ") with clamping device for Reprovit II. Books and other material up to 5 inches thick are held flat against the glass top..	111.00
16,805	OOEVM	Illuminating Box (7" x 9 $\frac{1}{2}$ ") for transillumination of material being photographed. A milk glass plate evenly diffuses the light from four 25 watt lamps.....	42.00
16,810	OOEUK	Illuminating Box (14" x 16") for transillumination of material being photographed. A milk glass plate evenly diffuses the light from four 60 watt lamps.....	84.00
16,815	BEEUL	Connecting Cord (5 foot) with switch for illuminating boxes OOEVM and OOEUK.....	5.00

REPLACEMENT LAMPS

16,825	VOLAM	Projection Bulb (100 watt) for Projection Head OUTSO.....	\$4.50
16,830	VFOOL	Bulb (100 watt) for Four-Lamp Illuminator RKCOO.....	1.00
16,835	BERAT	Bulb (25 watt) for Illuminating Box OOEVM.....	.80
16,840	VKOOK	Bulb (60 watt) for Illuminating Box OOEUK.....	.90

PHOTOMICROGRAPHY

You get many advantages when you use your Leica for photomicrographs.

Film economy.—Unless you have had a lot of experience, you will make several exposures of each subject. While there are good exposure meters for photomicrography, they are expensive. Trial-and-error is still the method most often used for determining correct exposure. This can run into considerable expense with large photomicrographic cameras, especially with color film.

Short exposures.—The Leica film-plane, being much closer to the microscope ocular than that of a larger camera, has less "bellows draw"; therefore, exposures are much shorter. Shorter exposure lessens the chance of vibration and the movement of living specimens during exposure.

Observe while exposing.—The swing-out prism of the Micro Ibsos and Micro Attachment passes 60% of the light to the negative and 40% through the telescope for viewing. You can view living organisms during actual exposure. If you want all of the light to reach the negative, use the Double Release which swings the prism out of the light path as it trips the shutter.

Homogeneity of equipment.—The Leica with Micro Ibsos connects to the draw-tube of the microscope; its light weight needs no special support. Your set-up occupies less space and is easier to adjust.

Determination of magnification.—The fixed position of the Leica film-plane eliminates measurement of film distance. It simplifies your computation. You just multiply the power of the objective by that of the ocular and divide by the factor of the attachment.

Example: 45X objective—10X ocular—Micro Ibsos
with $\frac{1}{3}$ X correction lens:—
 $(45 \times 10) \div 3 = 150$ diameters on the negative.

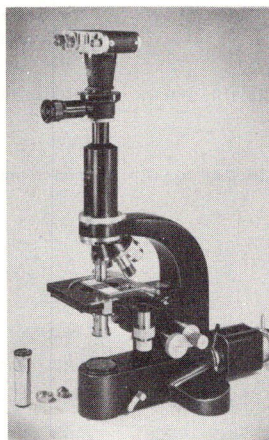
Enlarge three times to a 3 x 4½ inch print and you have the same magnification you saw through the microscope (450 times). Enlarge to an 8 x 10 print and you have a magnification of 1200 times.

Examine or photograph.—You can leave the Micro Ibsos or Micro Attachment in position on the microscope at all times. For visual examination of the specimen use the viewing telescope; to photograph the specimen simply press the cable release. You need not change focus or alignment of equipment.

MICRO IBSO

The Micro Ibsos replaces the lens on your Leica. The attachment and camera are then connected to the draw-tube of any standard microscope. The Micro Ibsos has its own "X"-synchronized Ibsos shutter (1 to 1/125th, "T" and "B") to eliminate vibration at high magnifications and comes with a 10X Periplan ocular. The swing-out prism passes 40% of the light through the viewing telescope which is focused on cross hairs for your individual eyesight.

The interchangeable conical tube of the Micro Ibsos has a correction lens with a magnifying factor of $\frac{1}{3}$ X or $\frac{1}{2}$ X. It shortens the microscope's "infinity" from 250mm to that of the Leica film-plane. If this compensation were not made you would have to refocus the microscope and so sacrifice resolution.



Leica with Micro Ibsos on Microscope

Catalog Number	Code Word	Item	Retail Price
17,000	MIKAS	Micro Ibsos with screw-mounting $\frac{1}{3}$ X conical correction tube and two cable releases.	\$108.00
17,001	MIKAS-M	Micro Ibsos with bayonet-mounting $\frac{1}{3}$ X conical correction tube and two cable releases.	110.00

<i>Catalog Number</i>	<i>Code Word</i>	<i>Item</i>	<i>Retail Price</i>
17,005	MIBAC	Micro Ibso with screw-mounting $\frac{1}{2}X$ conical correction tube and two cable releases.	111.00
17,006	MIBAC-M	Micro Ibso with bayonet-mounting $\frac{1}{2}X$ conical correction tube and two cable releases.	113.00

MICRO ATTACHMENT

The Micro Attachment is for use with the Reprovit II or Focaslides when mounted on a separate support. You can focus the microscope image on the ground-glass screen or through the viewing telescope. It is quite like the Micro Ibso, but in place of the interchangeable conical tube it uses a cylindrical tube with $\frac{1}{3}X$ correction lens. Connection is made to the draw-tube of the microscope with a light-excluding adapter. No ocular comes with the attachment. If you do not have a compensating eyepiece, the 10X Periplan is recommended.

17,050	RPNOO	Micro Attachment with $\frac{1}{3}X$ correction lens and two cable releases, but without ocular.	112.00
17,051	RPOOT	Micro Attachment with $\frac{1}{3}X$ correction lens. Similar to RPNOO but without viewing telescope or cable releases.	20.00
17,053	RSTOO	Micro Attachment with $\frac{1}{2}X$ correction lens and two cable releases, but without ocular.	115.00
17,054	RTSOO	Micro Attachment with $\frac{1}{2}X$ correction lens. Similar to RSTOO but without viewing telescope or cable releases.	23.00

FOCASLIDE PHOTOMICROGRAPHY

You can use the Focaslides for taking photomicrographs without the Micro Attachment (focusing on the ground-glass screen) and still have the advantage of "infinity correction." The screw-mounting interchangeable conical tubes screw into the Focaslides and connect to the microscope with light-excluding rings. You will, of course, have to mount the Focaslides above the microscope on a separate support. The carrying arms which fit the enlargers are ideal for this purpose. (See subsection on Supplemental Equipment for the Focaslides.)

17,025	GHEF	Interchangeable Conical Tube ($\frac{1}{3}X$), screw-mounting, for use on Focaslides or Micro Ibso.	14.00
17,026	GHEF-M	Interchangeable Conical Tube ($\frac{1}{3}X$), with bayonet mount, for Micro Ibso.	16.00
17,030	GIMW	Interchangeable Conical Tube ($\frac{1}{2}X$), screw-mounting, for use on Focaslides or Micro Ibso.	17.00
17,033	GIMW-M	Interchangeable Conical Tube ($\frac{1}{2}X$), with bayonet mount, for Micro Ibso.	19.00
17,031	GIINK	Interchangeable Conical Tube (1X), screw-mounting, for use on Focaslides or Micro Ibso.	24.00

ACCESSORIES FOR PHOTOMICROGRAPHY

Catalog Number	Code Word	Item	Retail Price
17,032	LSZOO	Light-Excluding Rings (set of 2) for light-tight connection between conical tubes and microscope.....	\$ 7.50
17,055	PEZEN	Periplan Ocular (10X) for use with Micro Attachment.....	13.00
14,070	FINOT	Leica Cable Release (10 inch) with set-screw for locking focal plane shutter in open position.....	1.20
17,015	GIIBR	Cable Release with set-screw for operating prism. Supplied with Micro Ibsor and Micro Attachment.....	2.00
17,020	GIIFT	Cable Release without set-screw for operating Ibsor shutter. Supplied with Micro Ibsor and Micro Attachment.....	1.80
17,010	CALOS	Double Release fitting cable releases of Micro Ibsor and Micro Attachment. Simultaneously operates shutter and swing-out prism.....	10.00
17,040	AGIHU	Clamping Ring for adjustable draw-tube of 31.8mm inside diameter (Leitz Stand B). Prevents creeping of draw-tube.....	3.50
17,045	GFEII	Clamping Ring for adjustable draw-tube of 25.4mm inside diameter (Leitz Stand G). Prevents creeping of draw-tube.....	3.50
17,035	GDIIK	Adapter fitting Micro Ibsor to Leitz polarizing microscopes with large diameter draw-tube.....	3.50

SUPPLEMENTAL EQUIPMENT FOR PHOTOMICROGRAPHY

17,060	BEECH	Monla Microscope Lamp (low voltage) for photomicrography or visual observation. Has concentrated filament bulb, focusing condenser and adjustable stand.....	\$ 38.00
17,075	LINID	Bulb (6 volt, 5 ampere) for Monla lamp.....	2.50
17,065	REDYX	Regulating Transformer (110/220 volts A.C.) with ammeter for Monla Microscope Lamp.....	45.00
17,067	RESOX	Regulating Transformer (110 volts A.C.) with three taps (giving 3 brightness stages to Monla lamp).....	25.00
17,070	REDIG-BEEUL	Resistance (110 volt) for Monla Microscope Lamp. Used in place of transformer to reduce 110 volts A.C. or D.C. to 6 volts.....	26.00
17,085	IFSTA	Lifa Filter Stand for holding Lifa photomicrographic filters between light source and microscope.....	12.90
17,080	DTEEO	Lifa Green Filter for photomicrography. Fits filter stand IFSTA.....	11.00

MAGNIFIERS AND READING GLASSES

Whether your attention focuses on beetles' wings or transistor assemblies; the splinter in your daughter's finger or examination of your Leica negatives—there's a Leitz magnifier to make your work easier. Reading glasses, simple and aplanatic magnifiers in a choice of powers permit you to fill your needs precisely.

You can get the 2-inch hand magnifier and the 3½ and 4-inch reading glasses with either a fixed handle or with or without a removable handle. You can mount the latter two on a pillar stand for gross work.

The simple magnifiers have two lens elements and are well corrected. They are excellent and inexpensive optical aids for school use. Their cylindrical mount permits use with a handle or special dissecting stand.



Leitz Aplanatic Folding Pocket Magnifier

The aplanatic magnifiers are the finest available. They are very highly corrected to give a flat field free from distortion and color fringes. You have a choice of models in magnifications from 6 to 20 times. You may use them for the most exacting work. They come in a cylindrical mount for use with a handle or special dissecting stand. You can also get them as pocket magnifiers, in protective folding mounts.

HAND MAGNIFIERS

<i>Catalog Number</i>	<i>Code Word</i>	<i>Item</i>	<i>Retail Price</i>
18,800	NAHIV	Hand Magnifier (4X), 50mm lens diameter; with fixed polished handle.	\$ 12.40
18,805	NEEUG- NEEHX	Hand Magnifier (4X), 50mm lens diameter; with removable handle.	12.40
18,810	NEEUG	Hand Magnifier (4X), 50mm lens diameter; without handle.	11.60

READING GLASSES

18,815	NAHKY	Reading Glass , 86mm lens diameter; with fixed polished handle.	10.00
18,820	NAHKY- NEEHX	Reading Glass , 86mm lens diameter; with removable handle.	10.00
18,825	NEEBU	Reading Glass , 86mm lens diameter; without handle.	9.20
18,830	NDUEE	Reading Glass , 100mm lens diameter; with fixed polished handle.	10.00
18,835	NDUEE- NEEHX	Reading Glass , 100mm lens diameter; with removable handle.	10.00

<i>Catalog Number</i>	<i>Code Word</i>	<i>Item</i>	<i>Retail Price</i>
18,840	NEEDV	Reading Glass , 100mm lens diameter; without handle.....	\$9.20
18,845	NAOEE	Reading Glass Stand for mounting 4X magnifier NEEUG or Reading Glasses NEEBU or NEEDV. Comprising circular base, upright with adjustable cross arm and universal joint with wing nut.....	20.00
18,850	NEEHX	Handle for hand magnifier NEEUG and Reading Glasses NEEBU and NEEDV.....	.80

SIMPLE MAGNIFIERS

18,870	NAGMI	Simple Magnifier (6X) , field of view 20mm.....	4.60
18,875	NAGLE	Simple Magnifier (8X) , field of view 20mm.....	4.60
18,880	NAGFU	Simple Magnifier (10X) , field of view 15mm.....	4.60

APLANATIC MAGNIFIERS

18,900	NAIAS	Aplanatic Magnifier (6X) , field of view 30mm.....	11.00
18,905	NAIBB	Aplanatic Magnifier (8X) , field of view 22mm.....	11.00
18,910	NAICZ	Aplanatic Magnifier (10X) , field of view 15mm.....	11.00
18,915	NAIGI	Aplanatic Magnifier (12X) , field of view 11mm.....	11.00
18,920	NAILT	Aplanatic Magnifier (20X) , field of view 5mm.....	14.00
18,925	NAFNU	Handle with clamping collar for simple and aplanatic magnifiers in cylindrical mounts.....	3.40

DISSECTING STANDS

18,940	NADDA	Dissecting Stand accepting simple and aplanatic magnifiers in cylindrical mounts, for use with incident or transmitted light. Comprising horseshoe base with pillar, adjustable illuminating mirror, object stage with glass insert and stage clips, arm rests and a magnifier holder focusing by rack and pinion; with wooden carrying case.....	60.00
18,950	NADEY	Dissecting Stand as described under NADDA, but with aplanatic magnifiers 10X and 20X; with wooden carrying case.....	85.00

FOLDING MAGNIFIERS

18,960	NAJBE	Folding Pocket Magnifier (6X aplanatic) in leather case.....	15.00
18,965	NAJES	Folding Pocket Magnifier (8X aplanatic) in leather case.....	15.00
18,970	NAJNI	Folding Pocket Magnifier (10X aplanatic) in leather case.....	15.00
18,975	NAJLO	Folding Pocket Magnifier (12X aplanatic) in leather case.....	15.00
18,980	NAJOB	Folding Pocket Magnifier (20X aplanatic) in leather case.....	17.00

DARKROOM

DARKROOM EQUIPMENT

You will enjoy working in your darkroom, for it is here you practice the creative art of photography. From your darkroom come salon prints for exhibits and a priceless store of happy memories captured by your Leica. Your darkroom means economy, too. You can develop and print your own pictures for only the cost of the material. Darkroom work is easy; but, as in taking the picture, your results will depend on the precision of your equipment. Naturally, Leitz darkroom equipment backs up the precision of your Leica in every way.

BULK LOADING

You will find convenience as well as economy when you purchase bulk film and load your own Leica film magazines. If you want to take only a few pictures, load a magazine with a short strip of film. You won't have to wait until you expose three dozen to see the results. Perhaps you may want to take only one picture, such as a black & white test negative. In that case, put a short length of film in the Single Exposure Holder. (You won't even need this accessory to make single exposures with the Leica M 3.) If you have a full roll of film in your camera and want to remove part of it for development, you will find the Film Cutting Knife useful.

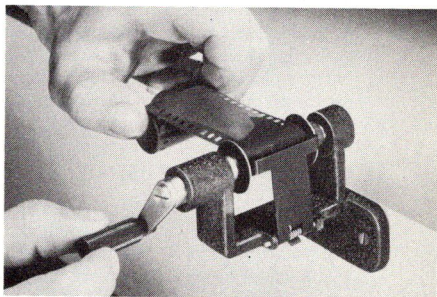


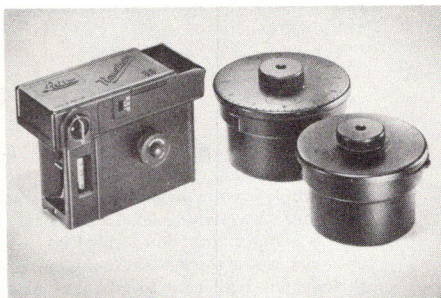
Table Film Winder

Catalog Number	Code Word	Item	Retail Price
14,001	IXMOO- DRXOO	Film Magazine for Leica M 3. (Useable for all models of the Leica camera except "250" exposure model); with screw-cap plastic container.	3.45
14,006	IXMOO	Film Magazine 14,001 but without container.	3.00
14,000	FILCA	Film Magazine for Leica cameras IIIIf, IIIf and If and all former models (except "250" exposure model); with plastic container.	1.80
14,005	FILCA- SINE	Film Magazine Filca without container.	1.35
14,010	DRXOO	Plastic Container with screw-cap for Film Magazines.45
14,015	SPUCA	Center Spool for Film Magazine.75
15,000	ABLON	Film Template for trimming trailer and leader on bulk film.	2.40
15,005	AGRIF	Hand Film Winder for loading bulk film into magazines.60
15,010	AFLOO	Table Film Winder for loading bulk film into magazines. Has winding crank and spring to maintain film tension. Fastens to table with two screws. (Accommodates magazines of "250" exposure Leica).	7.50
15,015	ABCOO	Film Cutting Knife for cutting off exposed portions of film in camera.	1.50
14,120	FKKOO	Single Exposure Holder for Leica models Ic, IIc, IIIc, IIIf and IIIIf with serial numbers below 590,681. For later cameras a special base plate without film positioning bar is required.	1.50
14,125	FHKOO	Single Exposure Holder for Leica models I, II Standard, III, IIIa and IIIb.	1.50

DEVELOPING TANKS

When you develop film, it is important to keep your solutions at a correct and uniform temperature. Not only the developer, but the fixing bath and wash waters as well. Leitz developing tanks are a help, since they are made of bakelite and hold an even temperature better than metal tanks. Each is light tight and, after you load it and lock the cover, you can process in bright light.

Both the 10 oz. (300cc) and 17 oz. (500cc) tanks have an embossed plastic apron which you wind on the reel with the film. This assures even development of the negative, since the embossing separates the film letting the solution get to all parts of it. The apron for the 17 ounce tank is embossed on both sides of each edge. You can process two rolls of film at once by placing them back to back. The apron for the 10 ounce tank is embossed on one side of each edge only; you can process but one film at a time. But the smaller size of this tank is a convenience when you travel.



Leitz Developing Tanks

If you have no darkroom, you'll like the Rondinax Daylight Loading Developing Tank. For you can not only process, but even load your film into it in full daylight! A built-in thermometer keeps check on the temperature of the solution for you.

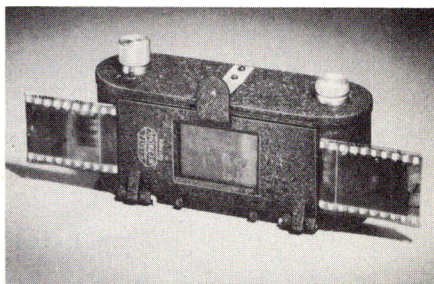
Catalog Number	Code Word	Item	Retail Price
15,020	CORUN	17 Ounce Developing Tank (500cc).....	\$ 9.00
15,025	CORYB	Apron for 17 ounce Tank.....	3.60
15,030	CORID	Reel for 17 ounce Tank.....	2.85
15,050	CORCF	Lid for 17 ounce Tank.....	1.65
15,045	CORPE	Tank Only (17 oz.) without lid.....	2.85
15,035	COSTI	Agitator for 17 ounce Tank.....	.60
15,055	CODRO	10 Ounce Developing Tank (300cc).....	6.00
15,060	CORBA	Apron for 10 ounce Tank.....	2.70
15,065	CORSO	Reel for 10 ounce Tank.....	1.35
15,067	CORCFS	Lid for 10 ounce Tank.....	1.35
15,069	CORPES	Tank Only (10 oz.) without lid.....	1.35
15,072	COODQ	Agitator for 10 ounce Tank.....	.60
15,080	TEOOH	Rondinax Daylight Loading Tank.....	24.00
15,075	CORET	Thermometer for 10 or 17 ounce developing tanks.....	1.50

CONTACT PRINTERS

You will at times want to make contact prints from your Leica negatives either on paper for record purposes, or on film strips or 2 x 2 inch glass plates for projection. If you make many prints, you will enjoy the convenience of the self-contained professional units; if you make contact prints only occasionally, the ELDIA or ELDUR contact printer is excellent.

SIMPLIFIED PRINTERS

The ELDIA Contact Printer makes positives of your 24 x 36mm Leica negatives on 35mm film strips. Or you can interchange its hinged masking window with an 18 x 24mm window for single-frame prints. The unexposed film or paper is loaded into a light-tight housing and advanced by turning a knob—a single click for single-frame spacing, two clicks for double-frame. You can print your negatives in any sequence you want, exposing by an external light source.



ELDIA Contact Printer



ELDUR Contact Printer

The ELDUR Contact Printer prints your Leica or single-frame negatives on 2 x 2 inch (50 x 50mm) glass plates. You can also make contact prints on 2 x 2 inch paper by using an accessory metal pressure plate. Exposure is made in the same way as with the Eldia printer.

<i>Catalog Number</i>	<i>Code Word</i>	<i>Item</i>	<i>Retail Price</i>
15,085	ELDIA	Contact Printer for 35mm strips.....	\$ 21.00
15,090	ELKIN	Interchangeable Window (18 x 24mm) for ELDIA Printer.....	3.60
15,095	ELDUR	Contact Printer for 50 x 50mm glass plates.....	21.00
15,100	ELGLA	Pressure Plate for ELDUR Printer when using sensitized paper.....	.75

PROFESSIONAL PRINTERS

If you regularly make film strips or 2 x 2 slides, one of the Professional Contact Printers is a must. You can get them in five combinations, your choice depending on your individual needs. A complete printer consists of a Base Housing with Film or Slide Printing Attachment, and in the case of the Combination Printers, both attachments. Depending on the combination you pick, you can make contact prints on 35mm film or paper, either single or double frame, and 2 x 2 inch glass slides or paper prints in picture sizes up to 4 x 4cm.



Professional Printer

Base Housing

The Base Housing is common to all units; the film printing or slide attachment fastens to it by two hooks. A ruby bulb in the base burns constantly so you can safely observe your negatives, and a built-in push button (or externally connected timer) controls a 15 watt white bulb while you make the exposure. A rheostat in the base adjusts the intensity of the printing light. Two arms with interchangeable spools for 35mm negatives come with the base.

Film Printing Attachment

The film attachment lets you print on 35mm film. It comes with interchangeable masking windows for both Leica and 18 x 24mm single-frame negatives. The light-tight housing holds up to 33 feet of positive film which is advanced by a knob—one click for single-frame and two clicks for double-frame spacing. When you lift the hinged housing to position the negative, a safety cover closes the aperture and prevents fogging of the film.

Slide Printing Attachment

This attachment is for printing on 50 x 50mm lantern slide plates. It has an interchangeable masking window for 24 x 36mm Leica negatives. You can also get accessory masking windows for sizes up to 4 x 4cm. With an accessory pressure plate, you can make contact prints on paper cut to 2 x 2 inches. The slot in the side of the attachment lets you "dodge" the print.

<i>Catalog Number</i>	<i>Code Word</i>	<i>Item</i>	<i>Retail Price</i>
15,150	KOORA	Professional Printer for 35mm double- and single-frame film strips. Consists of Base Housing and Film Printing Attachment with interchangeable windows.	\$105.00
15,115	KOVIR	Professional Printer for 2 x 2 inch slides. Consists of Base Housing and Slide Printing Attachment.	72.00
15,155	KOOLX	Combination Printer for 2 x 2 inch glass slides and 35mm double frame and 24 x 24mm film strips. Consists of Base Housing, Slide Printing Attachment and Film Printing Attachment with 24 x 36mm and 24 x 24mm interchangeable masking windows.	129.00

COMPONENTS AND ACCESSORIES

<i>Catalog Number</i>	<i>Code Word</i>	<i>Item</i>	<i>Retail Price</i>
15,105	KOLOM	Base Housing	48.00
15,145	KOOHI	Film Printing Attachment with 24 x 36mm and 24 x 24mm interchangeable masking windows.	57.00
15,164	KQWOO	Interchangeable Masking Window (18 x 24mm) for Film Printing Attachment KOOHI.	3.30
15,110	KOGLA	Slide Printing Attachment	24.00
15,160	KOREF	Interchangeable Masking Window (18 x 24mm) for Slide Printing Attachment KOGLA.	2.85
15,165	KONAF	Interchangeable Masking Window (3 x 4cm) for Slide Printing Attachment KOGLA.	4.20
15,170	KODRE	Interchangeable Masking Window (4 x 4cm) for Slide Printing Attachment KOGLA.	4.80
15,100	ELGLA	Pressure Plate for Slide Printing Attachment KOGLA. Used when making 2 x 2 inch paper prints.75
15,175	KOSUS	Interchangeable Spools (set of 2) for 3 x 4cm and 4 x 4cm negatives.	1.80
15,180	OSLAM	White Bulb (15 Watt) for Base Housing.60
15,185	OSROT	Ruby Bulb for Base Housing.	1.50

ENLARGERS

Your Leica negatives are rich in detail and naturally you want prints which bring all of it out. Your enlarger is a vital link between your negatives and prints. In it, precision and utility are as important as in your camera and lens.

Your enlarger must reproduce the wire-sharpness of your negative, yet minimize grain. It must illuminate the entire print area evenly for both small and big enlargements. It must adjust easily, yet remain rigid. Leitz enlargers do all this—and more—because they are designed especially for miniature camera negatives.

Each enlarger has a 75 watt opal bulb which you may adjust in its matt finish reflector. The curvature of the reflector is matched to a special condenser to combine diffused light which reduces grain with "parallel" light which retains detail. You can get higher wattage bulbs for commercial printing or for enlarging on slow papers.

There are two classes of enlargers: manual focusing and automatic focusing. The Valoy II (manual) and Focomat Ic (autofocal) have threaded lens flanges and you can use your screw-mounting 50mm Leica lens (except the Summarit $f/1.5$). They come with an interchangeable glassless negative carrier for Leica-size negatives and you can also use carriers for negatives up to 4 x 4cm. An accessory orange filter lets you compose your print safely right on the sensitized paper.

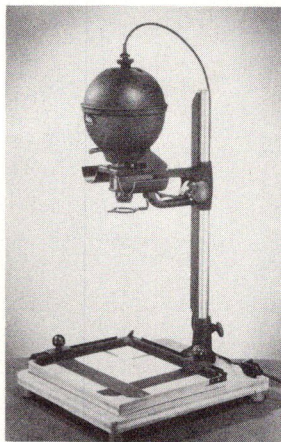
PERSPECTIVE CORRECTOR

You may have noticed that when you photograph a tall building with your camera tilted, parallel edges converge. You've probably also noticed distortions in your interior pictures when the camera was not level, especially if you were using a wide angle lens. These "distortions" are not inherent in your lens, but are the natural result of optical laws and depend on camera angle and variation in distance.

You can change these falsifications and make converging lines parallel by tilting your negative and easel while enlarging. This compensates for your having tipped the camera when taking the picture. The Perspective Corrector will help you. Place the Tilting Negative Carrier Holder in your Valoy II or Focomat Ic enlarger (it cannot be used with the Focomat IIa) and your easel on the Tilting Easel Holder. Then adjust one to the other until you get the desired perspective. That's all there is to it.

VALOY II ENLARGER

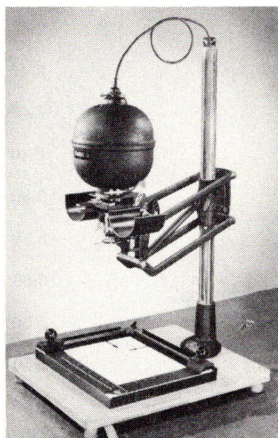
You can use the Valoy II as both enlarger and copying stand! Its baseboard ($15\frac{1}{2} \times 17\frac{3}{4}$ inches) has a rotating removable upright 32 inches high which has a guide rail to center the carrying arm. The self-locking arm has a finger clamp for rapid positioning on the upright, and a rack-and-pinion for fine adjustment. You can remove the enlarging head from the carrying arm and, with the adapters described in the Close-Up section, attach the Focalslide or Bellows for copying. There is a helical focusing mount for critical focusing and the lamp housing can be tilted for easy removal of the bayonet-mounted condenser.



Valoy II Enlarger

Catalog Number	Code Word	Item	Retail Price
17,501	VUOOW- VOOQF	Valoy II Enlarger and Copying Stand without lens, filter or easel.....	\$ 84.00
17,506	FTOOS	Orange Filter for Valoy II.....	2.40
17,507	NCSOO	Special Condenser for Valoy II enlarger. Treated surface prevents Newton's rings.....	15.00
17,508	ZPOOK	Table Clamp accepting upright of Valoy II enlarger. Adapts Valoy for enlarging or copying on other than baseboard.....	12.00
16,706	UWOOS	Valoy II Adapter for mounting Focaslides.....	4.50

(Also See EASELS and BULBS Listings)



Focomat Ic Enlarger.

FOCOMAT Ic ENLARGER

The Focomat Ic can be set in an instant and is autofocus through a range of 2 to 10 diameters; you can make larger prints by focusing manually. The autofocus cam is adjusted precisely to each individual lens you use in the enlarger, assuring critical focus throughout its range. The baseboard (16 x 21 inches) has a built-in light switch, a quick clamping device to lock the easel in position, and an upright 32 inches high, 40mm in diameter. You raise or lower the spring counter-balanced lamp housing by a self-locking finger grip. The degree of enlargement shows on a scale. The housing can be tilted for easy cleaning of the condenser. You can also use the baseboard and upright of your Focomat Ic as a copying stand by using one of the carrying arms described in the section on Close-Up Photography.

17,575	ICOOP	Focomat Ic Enlarger without lens, filter or easel.....	138.00
17,600	ICWOO	Focomat Ic Enlarger complete with 50mm Focotar f/4.5 lens, Orange Filter and 8 x 10 inch Enlarging Easel.....	213.00
17,625	IHOOC	Focomat Ic Enlarger with 22 x 25 inch baseboard and upright 47 inches high, but without lens, filter or easel.....	154.50
17,590	FOOES	Orange Filter for Focomat Ic.....	7.50
17,591	NESOO	Glass Pressure Plate , with spacer ring, for Focomat Ic enlarger. Treated surface prevents Newton's rings. (Used with condenser marked "N")....	15.00
17,593	NHCOO	Condenser Type "N" for Focomat Ia and Ic enlargers. Used with Glass Pressure Plate NESOO for prevention of Newton's rings. (Not required if enlarger is fitted with condenser marked "N").....	10.50

Accessories For Both Valoy II And Focomat Ic

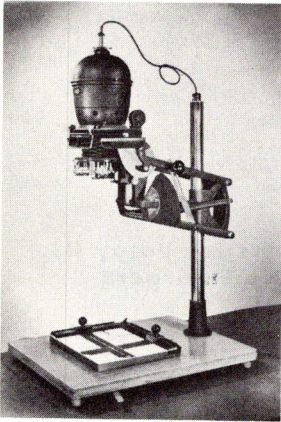
Catalog Number	Code Word	Item	Retail Price
17,581	DOOHF	50mm Focotar f/4.5 Enlarging Lens for Valoy II and Focomat Ic. Coated, with click stops. Specifically corrected for enlarging and reproduction work.	\$ 45.00
17,675	DOORX	Extension Ring for converting Focotar lens supplied with Reprovit II to Focotar lens DOOHF (also adapts threaded PAXETTE lens to Leica enlargers except Focomat IIa).	1.50
17,800	DOOBC	Bayonet Adapter , adapting bayonet-mounting 50mm Elmar lens to Valoy and Focomat I, Ia, and Ic enlargers (accepts rear bayonet of lens in collapsed position).	3.30
Adapters Fitting Lenses of Other Manufacture to the Valoy, Focomat I, Ia and Ic Enlargers.			
17,805	OOVBH	Adapting threaded FINETTA lens.	2.40
17,810	OOVCK	Adapting threaded AKARETTE lens.	2.40
17,815	OOVKY	Adapting threaded EXACTA lens.	2.40
17,820	OOVHU	Adapting threaded ROBOT lens.	2.40
17,825	OOVIW	Adapting threaded DIAX Ia lens.	3.30
17,830	OOVDM	Adapting bayonet CONTAX lens.	3.30
17,835	OOVFQ	Adapting bayonet EXACTA lens.	6.60
17,840	OOVGS	Adapting bayonet PROMINENT lens.	3.30
17,675	DOORX	Adapting threaded PAXETTE lens.	1.50
17,676	OOVMC	Adapting threaded LORDOMAT lens.	2.40
16,620	VALOO	Diaphragm Adjusting Ring for screw-mounting 50mm Elmar f/3.5 lens. Provides click-stop adjustment of diaphragm when lens is used in enlarger.	6.60
17,665	NEWOO	Newton Ring Eliminator with 24 x 36mm aperture for use on condenser of Valoy II or Focomat Ic and discontinued models. Avoids Newton's Rings.	1.50
17,670	RCOOF	Film and Plate Holder for single film strip or 2 x 2 inch lantern slide plate. Converts Valoy II or Focomat Ic to a single exposure copying camera.	10.50
17,655	ZISOO	Perspective Corrector for Valoy II or Focomat Ic. Complete with Tilting Negative Carrier Holder, Hinged Negative Carrier and Tilting Easel Holder.	42.30
17,640	ZEOOU	Tilting Negative Carrier Holder supplied with Perspective Corrector. Has two ball and socket spring clips for holding Hinged Negative Carrier, two adjusting nuts and two clamping screws.	15.90
17,645	ZFNOC	Hinged Negative Carrier supplied with Perspective Corrector. A glass and metal sandwich with 24 x 36mm aperture fitting Tilting Negative Carrier Holder.	2.40

Catalog Number	Code Word	Item	Retail Price
17,650	ZFOOT	Tilting Easel Holder supplied with Perspective Corrector. Base has metal dovetail grooves fitting quick clamping device of Focomat Ic. Tilting standard has dovetail slider fitting grooves of Focomat and Valoy II easel.	24.00
17,660	VBHOO	Bayonet Collar for screw-mounting 50mm Elmar f/3.5 lens. Necessary when using lens in enlarger with Perspective Corrector.	3.30
17,661	DNWOO	Bayonet Collar for bayonet-mounting 50mm Elmar f/3.5 lens. Necessary when using lens in enlarger with Perspective Corrector.	3.60

Interchangeable Masking Negative Carriers For Valoy II, Focomat Ic And Discontinued Focomat Ia Enlargers

17,516	VNAOO	Negative Carrier for 18 x 24mm negatives.	3.60
17,521	VNIOO	Negative Carrier for 24 x 24mm negatives.	3.60
17,526	VNEOO	Negative Carrier for 24 x 36mm negatives.	3.60
17,531	VNOOU	Negative Carrier for 3 x 4cm negatives.	3.60
17,536	VNUOO	Negative Carrier for 4 x 4cm negatives.	3.60
17,550	VAZEL	Single Negative Holder and Mask used when enlarging single 24 x 36mm negative.	3.90
17,540	VBOOP	Metal Negative Mask supplied with Single Negative Holder VAZEL.	1.20
17,545	VOOMD	Hinged Double Glass Plate (3.5 x 12cm) supplied with Single Negative Holder VAZEL.	2.70
17,541	VASOX	Metal Negative Mask for single 24 x 24mm negatives. Use with Hinged Double Glass Plate VOOMD.	1.20
17,565	VOONR	Hinged Double Glass Plate (5 x 16cm) used when enlarging a single negative or short strip cut from a roll of 3 x 4cm or 4 x 4cm negatives. To be used with Negative Mask VAZUP or VAZIS.	4.20
17,555	VAZUP	Metal Negative Mask with 3 x 4cm aperture. To be used with Glass Negative Holder VOONR.	1.20
17,560	VAZIS	Metal Negative Mask with 4 x 4cm aperture. To be used with Glass Negative Holder VOONR.	1.20

FOCOMAT IIa ENLARGER



Focomat IIa Enlarger

This autofocus enlarger is ideal for the professional finisher and takes negatives up to 6.5 x 9cm (2½ x 3½ inches). Its 20½ x 27 inch baseboard has a built-in light switch, a quick-clamping easel lock and a 50mm upright 32 inches high.

Two turret mounted lenses come with the enlarger: a 50mm Focotar f/4.5 for negatives up to 4 x 4cm and a 95mm Focotar f/4.5 for larger sizes. The autofocus range with the 50mm objective is 2 to 13 diameters; with the 95mm lens it is 1.3 to 4.8 times. Each lens has its own individually calibrated cam. The degree of enlargement at any autofocus position is shown on the cam of the lens being used. You make enlargements beyond the automatic range by raising the enlarging head on the upright and focusing manually. A big double condenser assures even illumination and you can adjust the glass negative carrier to any of several mask sizes. Two metal masks come with the enlarger—one for the Leica negatives and one for 6.5 x 9cm negatives.

Catalog Number	Code Word	Item	Retail Price
17,690	TYDOO	Focomat IIa Enlarger complete with 50mm and 95mm Focotar f/4.5 lenses, Orange Filter and 8 x 10 inch Enlarging Easel.....	\$453.00
17,680	TVOOR	Focomat IIa Enlarger with 50mm and 95mm Focotar f/4.5 lenses, but without filter or easel.....	420.00
17,685	FYOON	Orange Filter for Focomat IIa.....	10.50

Interchangeable Negative Masking Plates For Focomat IIa Enlarger

17,715	CBOOD	Negative Masking Plate for 18 x 24mm negatives.....	1.50
17,720	CKOOV	Negative Masking Plate for 24 x 24mm negatives.....	1.50
17,725	CDEEO	Negative Masking Plate for 24 x 36mm negatives.....	1.50
17,730	CDOOB	Negative Masking Plate for 3 x 4cm negatives.....	1.50
17,735	CFIOO	Negative Masking Plate for 4 x 4cm negatives.....	1.50
17,740	CGLOO	Negative Masking Plate for 4.5 x 6cm negatives.....	1.50
17,745	CFOOZ	Negative Masking Plate for 4 x 6.5cm negatives.....	1.50
17,750	CGOOY	Negative Masking Plate for 6 x 6cm negatives.....	1.50
17,755	CHOOX	Negative Masking Plate for 6 x 9cm negatives.....	1.50
17,756	CHNOO	Negative Masking Plate for 6.5 x 9cm negatives.....	1.50

Catalog Number	Code Word	Item	Retail Price
17,710	GLOOC	Hinged Double Glass Plate (10 x 22cm) for holding single negatives in Focomat IIa. Areas up to 2½ x 3½ inches can be enlarged from a 5 x 7 inch negative.....	10.50
17,711	NIOOR	Special Negative Carrier fitting Focomat IIa enlarger for 35mm (24 x 36mm) negatives. Treated surface prevents Newton's rings.....	42.00
17,713	NCOOX	Upper Glass Plate for negative carrier of Focomat IIa enlarger. Treated surface prevents Newton's rings.....	10.50

ENLARGING EASELS FOR VALOY II, FOCOMAT Ia, Ic AND IIa ENLARGERS

These easels have adjustable masking bands and margin stops, a white surface for focusing the projected image and metal dovetail grooves fitting the quick clamping device of the Focomat enlargers.

17,585	FPYOO	Enlarging Easel 8 x 10 inches.....	\$ 22.50
17,630	FUOOR	Enlarging Easel 12 x 16 inches. This easel is thicker than FPYOO and is supplied with a spacer ring that is to be placed on the enlarger upright raising the lamp housing the proper distance.....	54.00
17,635	EAWOO	Automatic Electric Enlarging Easel for use with 110 volt A.C. Maximum picture size 5⅞ x 7⅞ inches. Margin stops are lever-adjusted from ⅜ to ½ inch in ⅛ inch increments, the width being indicated on a calibrated scale. A foot switch supplied with the easel is used for operation; when it is pressed, the top frame of the easel raises and the rear margin stop ejects the exposed paper.....	135.00

ENLARGER BULBS

17,760	FLABU	Opal Bulb (75 watt) for all enlargers (<i>Imported</i>).....	\$1.20
17,762	FVLOO	Opal Bulb (150 watt) for all enlargers (<i>Imported</i>)..... <i>Standard domestic bulbs may be used but the imported bulbs give better results.</i>	1.20
17,765	AKTOO	Aktina High Efficiency Opal Lamp (250 watt) for Focomat Ic and IIa. The lamp should be used with a voltage reducer.....	2.40
17,770	UOPEE	Voltage Reducer for Aktina High-Efficiency Lamp. Dims lamps while focusing and burns at full intensity during exposure; complete with voltmeter and switch for 110/220 volts A.C. or D.C.....	48.00

Accessories For Discontinued Models Of The Valoy and Focomat I Enlargers

Catalog Number	Code Word	Item	Retail Price
17,505	FYLTO	Orange Filter for Valoy.....	\$ 9.90
17,515	VDOON	Negative Carrier for 18 x 24mm negatives.....	3.90
17,520	VNOOD	Negative Carrier for 24 x 24mm negatives.....	3.90
17,525	VDMOO	Negative Carrier for 24 x 36mm negatives.....	3.90
17,530	VAVIR	Negative Carrier for 3 x 4cm negatives.....	3.90
17,535	VAKES	Negative Carrier for 4 x 4cm negatives.....	3.90

PROJECTORS

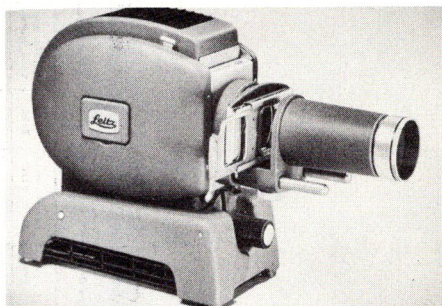
PROJECTORS

The full beauty of a photograph comes to light only when you project it as a transparency. Even in the best paper print, there are neither pure whites nor blacks, nor all the subtle tones that a transparency reproduces.

But naturally, it takes a fine projector to bring out all the beauty of a fine transparency. So, you will find three top-quality projectors of varying wattages in the Leica System which back up the precision of the Leica in every way.

By your choice of model, you can project at wattages from 150 to 750. A wide range of lenses and accessories permits you to project 2 x 2 inch, 2 $\frac{3}{4}$ x 2 $\frac{3}{4}$ inch, or 35mm. single or double frame film strips.

What's more, you can project Leica Stemar stereo transparencies in these projectors simply by changing the front assembly. You can even do micro projection of mounted or living specimens!



Leica "Prado 500 Professional" with Hektor f/2.5 Projection Lens

Prado "500" Professional

This model is the peak of projector design for professional use in theatres, auditoriums, lecture halls—wherever you need high wattage for a long image "throw." Yet, with the "500", you are not limited to large screen, large room use. For among the 17 lenses available for this instrument are those with focal lengths as short as 85mm. Simply by exchanging lens mounts and condensers you are ready for any projection situation.

A blower plus triple-wall construction, and efficient heat filters, keep the "500" cool to operate. A built-in tilting device makes it easy to center your pictures on the screen; a small hinged "window" emits enough light for you to read notes or sort slides by.

Naturally, the Prado "500" Professional allows you to project 2 x 2 inch, 2 $\frac{3}{4}$ x 2 $\frac{3}{4}$ inch (7 x 7cm.) slides and Stemar stereo transparencies. You quickly convert from one size to another with instantly interchangeable front assemblies. Other accessories allow you to project either single or double frame film strips as well. For teachers and lecturers, there's an accessory which permits the projection of both mounted microscopic specimens and living organisms.

For extremely long throws, on screens 20 x 30 feet and more, you can use a 750 watt bulb (with proper heat filters) in the Prado "500" without fear of overheating.

Prado "250"

For the Photographer who wants topnotch projection, but who doesn't need the super-power of the "500" professional, the Prado "250" is ideal. It is powerful enough for home or small-room projection, and operating temperatures are efficiently controlled by heat filters and a convection cooling system.

The "250" is flexible, too. You can choose among lenses from 85mm. to 150mm. And, as with the "500", there are interchangeable front assemblies for 2 $\frac{3}{4}$ x 2 $\frac{3}{4}$ inch as well as for 2 x 2 inch glass-bound or Readymount slides. Film strip and microprojection accessories are also available.

Prado "150"

You'll like the tiny Prado "150" for living room use, and especially for those times when you want to take a projector traveling. It has plenty of power for screens up to 5 x 5 feet, and you can project film strips and Stemar stereo transparencies with it as well as mounted 2 x 2 inch slides. The Prado "150" is so small and light, you can mount it handily on a tripod. A built-in bushing accepts a standard tripod screw.

PRADO PROJECTION EQUIPMENT

		PRADO "AUDITORIUM '500'" PROJECTORS				PRADO "500" PROFESSIONAL PROJECTORS				PRADO "250" PROJECTORS (New Model)				PRADO "150" PROJECTOR				
		Prado "Auditorium '500'" for 2 x 2 inch Slides				Prado "500" for 2 x 2 inch Slides				Prado "250" for 2 x 2 inch Slides				Prado "150" for 2 x 2 inch Slides				
LENS	Projector, Complete with Lens, Slide Changer and Bulb			Lens and Mount Only			Projector Complete with Lens, Slide Changer and Bulb		Lens and Mount Only		Projector Complete with Lens, Slide Changer and Bulb		Lens and Mount Only		Projector Complete with Lens, Slide Changer and Bulb		Lens and Mount Only	
	Cat. No. and Code Word	Price	Cat. No. and Code Word	Price	Cat. No. and Code Word	Price	Cat. No. and Code Word	Price	Cat. No. and Code Word	Price	Cat. No. and Code Word	Price	Cat. No. and Code Word	Price	Cat. No. and Code Word	Price	Cat. No. and Code Word	Price
85mm Hektor f/2.5					FIMUU-FUUMI 19,250	\$160.50	UFOWU-UTBKU 19,210	\$36.00	UDYTU 19,230	\$112.50*	UFOWU-UTBKU 19,210	\$36.00	DUUYO 19,000	\$78.00*	19,001	\$33.00		
100mm Dimeron f/2.8									UDOYU 19,231	111.00*	UEYSU-UTBKU 19,211	34.50	DUUXA 19,002	78.00*	19,003	33.00		
100mm Hektor f/2.5					FIUUC-FUUMI 19,252	168.00	UFSEU-UTBKU 19,212	43.50	UDREU 19,232	120.00*	UFSEU-UTBKU 19,212	43.50						
120mm Hektor f/2.5					FLUUA-FUUMI 19,253	187.50	UFKOU-UTBKU 19,213	63.00	UFAVU 19,233	139.50*	UFKOU-UTBKU 19,213	63.00						
150mm Dimeron f/2.8					FOUX-FUUMI 19,254	172.50	UFPPYU-UTAHU 19,214	48.00	UMYLU 19,234	124.50*	UFPPYU-UTAHU 19,214	48.00						
150mm Hektor f/2.5					FOWUU-FUUMI 19,255	204.00	USERU-UTAHU 19,215	79.50	UESFU 19,235	156.00*	USERU-UTAHU 19,215	79.50						
200mm Dimer f/4	FEUUC-FRCUU 19,266	\$235.50	TUUKR 19,216	\$ 54.00	FEUUG-FUUMI 19,256	178.50	TUUKR 19,216	54.00										
200mm Hektor f/2.5	FUUES-FRCUU 19,267	313.50	TYUUG 19,217	132.00	FUUES-FUUMI 19,257	256.50	TYUUG 19,217	132.00										
250mm Dimer f/4	FNUUY-FRCUU 19,268	240.00	TVUUR 19,218	58.50	FNUUY-FUUMI 19,258	183.00	TVUUR 19,218	58.50										
250mm Hektor f/2.8	FMSUU-FRCUU 19,269	375.00	THWUU 19,219	193.50	19,259	318.00	THWUU 19,219	193.50										

* Includes Federal Manufacturer's Excise Tax.

		Prado 66/500 for 7 x 7cm (2 1/4 x 2 1/4) Slides				Prado 66/250 for 7 x 7cm (2 1/4 x 2 1/4) Slides							
LENS		Projector Complete with Lens, Slide Changer and Bulb		Lens and Mount Only		Projector Complete with Lens, Slide Changer and Bulb		Lens and Mount Only					
		Cat. No. and Code Word	Price	Cat. No. and Code Word	Price	Cat. No. and Code Word	Price	Cat. No. and Code Word	Price				
150mm Dimaron f/2.8		YUUD-FUUMI 19,754	\$196.50	ECUUG 19,714	\$48.00	YUEB-APUUM 19,734	\$148.50*	ECUUG 19,714	\$48.00				
150mm Hektor f/2.5		YUUKR-FUUMI 19,755	228.00	EDCUU 19,715	79.50	YHRUU-APUUM 19,735	180.00*	EDCUU 19,715	79.50				
200mm Dimar f/4		YUULE-FUUMI 19,756	204.00	EDUUF 19,716	55.50	YUUDO-APUUM 19,736	156.00*	EDUUF 19,716	55.50				
250mm Dimar f/4		YUUMS-FUUMI 19,758	207.00	EFGUU 19,718	58.50								
		Prado "500" for Leica Stereo				Prado "250" for Leica Stereo				Prado "150" for Leica Stereo			
LENS		Projector Complete with Lens, Slide Changer and Bulb		Complete Front Assembly for Stereo Projection		Projector Complete with Lens, Slide Changer and Bulb		Complete Front Assembly for Stereo Projection		Projector Complete with Lens, Slide Changer and Bulb		Complete Front Assembly for Stereo Projection	
		Cat. No. and Code Word	Price	Cat. No. and Code Word	Price	Cat. No. and Code Word	Price	Cat. No. and Code Word	Price	Cat. No. and Code Word	Price	Cat. No. and Code Word	Price
50mm Projection Unit f/3.5		FIMST-IMPUU 19,950	\$249.00	19,915 IMPUUA	\$129.00	UDYST-IMPUU 19,930	\$213.00*	19,915 IMPUUA	\$129.00	DUUOL-IMPUU 19,900	\$177.00*	IMPUU 19,910	\$129.00
85mm Hektor f/2.5		FIMUU-ILNUU 19,951	333.00	ILNUU 19,911	222.00	UDYTU-ILNUU 19,931	297.00*	ILNUU 19,911	222.00				
100mm Hektor f/2.5		FIUUC-IRZUU 19,952	348.00	IRZUU 19,912	237.00	UDREU-IRZUU 19,932	312.00*	IRZUU 19,912	237.00				
120mm Hektor f/2.5		FLUUA-ISBUU 19,953	387.00	ISBUU 19,913	276.00								

* Includes Federal Manufacturer's Excise Tax.

COMPONENT PARTS AND ACCESSORIES FOR PRADO "500" PROFESSIONAL PROJECTOR

Component Parts	PRADO 2 x 2/250 (For 2 x 2 Slides)			PRADO 66/250 (For 2 3/4 x 2 3/4 Slides)		
	Catalog Number	Code Word	Price	Catalog Number	Code Word	Price
Aspherical Condenser	19,601	UBYVU	\$ 9.00 †	19,603	YTUUD	\$12.00 †
Heat Absorption Filter No. 1	19,611	UBKSU	12.00 †	19,614	YSUUE	18.00 †
Heat Absorption Filter No. 2	19,612	UBMWU	12.00 †	19,615	YRUUF	18.00 †
Heat Absorption Filter No. 3 (for 750 watt bulb)	19,613	FYUUN	12.00			
Front Attachment with Lens Bracket Without field condenser	19,620	YUUAZ-SINE	7.50 †		YGPUU-YIUUO	21.00 †
With field condenser				19,621		
Field Condenser for 2 x 2— For 85-100mm lens	19,631	UBEHU	6.00 †			
For 120-150mm lens	19,632	UBAZU	6.00 †			
For 200-250mm lens	19,633	UBFKU	6.00 †			
Slide Changers— For 2 x 2 slides	19,641	SLUUZ	6.00 †	19,642	YFNUU	7.50 †
For 2 3/4 x 2 3/4 slides				19,643	YBEUU	7.50 †
For 6 x 6cm slides				19,644	YDIUU	7.50 †
Projection Bulb—500 watt	19,655	FUUMI-D	4.15	19,655	FUUMI-D	4.15
Projection Bulb—750 watt	19,657	MUUDH-D	4.50	19,657	MUUDH-D	4.50
Projection Lenses Without mount, interchangeable in mount UTBKU:						
85mm Hektor	19,220	UFOWU	31.50			
100mm Hektor	19,222	UFSEU	39.00			
120mm Hektor	19,223	UFKOU	58.50			
Accessories	PRADO 2 x 2/500 (For 2 x 2 Slides)			PRADO 66/500 (For 2 3/4 x 2 3/4 Slides)		
	Catalog Number	Code Word	Price	Catalog Number	Code Word	Price
Film Strip Attachment	19,025	SBUUI	12.00			
Mask for 18 x 24mm	19,030	SUUAU	1.20			
Micro Projection Attachment with field condenser and 25mm Summar f/2.8 lens	19,661	YMUUL	60.00	19,662	YELUU	66.00
Micro Aquarium	19,100	DOBOR	6.60	19,100	DOBOR	6.60*
Complete front assembly for stereo pro- jection, including special field condenser, special slide changer for 2 x 2 Leica stereo slides, prism unit, paired projec- tion lenses, and polarizing filters in special parallel focusing mount, with stereo image, adjusting mechanism						
With 85mm Hektor f/2.5 lenses	19,911	ILNUU	222.00			
With 100mm Hektor f/2.5 lenses	19,912	IRZUU	237.00			
With 120mm Hektor f/2.5 lenses	19,913	ISBUU	276.00			
Elmar 50mm f/3.5 coated projection lens without diaphragm, in focusing mount	19,015	WUUNE	30.00			
Lens adapter to attach 50mm Elmar lens to projector	19,679		3.00			
Field condenser for 50mm lens for 2 x 2 inch slide projectors	19,630	UAIRU	6.00			
Carrying Case for Prado "500" Profes- sional or Prado "250" with 2 x 2 inch or 2 3/4 x 2 3/4 inch front assemblies including lenses up to 150mm	14,685	YKUUN	15.00			
Carrying Case, as above, but for projec- tors with lenses from 200 to 250mm	14,690	YLUUM	21.00			

NOTE: When converting Prado 2 x 2/250 to Prado 66/250, or vice-versa, the interchangeable components marked † must be provided. Of the items marked †, only the appropriate one need be obtained. Lenses of the desired focal length should be selected from the tabu-
lation presented on Pages 70 and 71.

COMPONENT PARTS AND ACCESSORIES FOR PRADO "250" PROJECTOR

Component Parts	PRADO 2 x 2/250 (For 2 x 2 Slides)			PRADO 66/250 (For 2 1/4 x 2 3/4 Slides)		
	Catalog Number	Code Word	Price	Catalog Number	Code Word	Price
Aspherical Condenser Heat Absorption Filter No. 1	19,602	YITUU	\$ 9.00 †	19,604	YPUUH	\$12.00 †
	19,616	UBCDU	12.00 †	19,617	YRKUU	18.00 †
Front Attachment with Lens Bracket Without field condenser	19,620	YUUAZ- SINE	7.50 †			
With field condenser				19,621	YGPUU- YIUUO	21.00 †
Field Condensers for 2 x 2— For 85-100mm lens	19,631	UBEHU	6.00 *			
For 100-150mm lens	19,632	UBAZU	6.00 *			
For 200-250mm lens	19,633	UBFKU	6.00 *			
Slide Changers— For 2 x 2 slides	19,641	SLUUZ	6.00 †	19,642	YFNUU	7.50 *
For 2 1/4 x 2 3/4 slides				19,643	YBEUU	7.50 *
For 6 x 6cm slides				19,644	YDIUU	7.50 *
Projection Bulb—250 watt	19,105	APUUM	6.00	19,105	APUUM	6.00
Projection Lenses With focusing mount (See list on Page E-2) Without focusing mount, interchangeable in mount UTBKU:						
85mm Hektor	19,220	UFOWU	31.50			
100mm Dimparon	19,221	UEYSU	30.00			
100mm Hektor	19,222	UFSEU	39.00			
120mm Hektor	19,223	UFKOU	58.50			
Accessories	PRADO 2 x 2/250 (For 2 x 2 Slides)			PRADO 66/250 (For 2 1/4 x 2 3/4 Slides)		
	Catalog Number	Code Word	Price	Catalog Number	Code Word	Price
Film Strip Attachment	19,025	SBUUI	12.00			
Mask for 18 x 24mm	19,030	SUUAW	1.20			
Micro Projection Attachment with field condenser and 25mm Summar f/2.8 lens	19,661	YMUUL	60.00	19,662	YELUU	66.00
Micro Aquarium	19,100	DOBOR	6.60	19,100	DOBOR	6.60
Complete front assembly for stereo projection, including special field condenser, special slide changer for 2 x 2 Leica stereo slides, prism unit, paired projection lenses and polarizing filters in special parallel focusing mount, with stereo image adjusting mechanism—						
With 85mm Hektor f/2.5 lenses	19,911	ILNUU	222.00			
With 100mm Hektor f/2.5 lenses	19,912	IRZUU	237.00			
With 120mm Hektor f/2.5 lenses	19,913	ISBUU	276.00			
Elmar 50mm f/3.5 coated projection lens without diaphragm, in focusing mount	19,015	WUUNE	30.00			
Lens adapter to attach 50mm Elmar lens to projector	19,679		3.00			
Field condenser for 50mm lens for 2 x 2 inch slide projectors	19,630	UAIRU	6.00			
Carrying Case for Prado "500" Professional or Prado "250" with 2 x 2 inch or 2 1/4 x 2 3/4 inch front assemblies including lenses up to 150mm	14,685	YKUUN	15.00			
Carrying Case, as above, but for projectors with lenses from 200 to 250mm	14,690	YLUUM	21.00			

NOTE: When converting Prado 2 x 2/500 to Prado 66/500, or vice-versa, the interchangeable components marked † must be provided. Of the items marked *, only the appropriate one need be obtained. Lenses of the desired focal length should be selected from the tabulation presented on Pages 70 and 71.

**SPARE PARTS AND ACCESSORIES
FOR THE PRADO "150" PROJECTOR**

	CATALOG NUMBER	CODE WORD	PRICE
Spare Parts			
Slide Changer for 2 x 2 Slides	19,641	SLUUZ	\$ 6.00
Projector Bulb—150 watt	19,040	DVUUM	5.50
Accessories			
Film Strip Attachment	19,025	SBUUI	12.00
Mask for 18 x 24mm	19,030	SUUAW	1.20
50mm Eimar Projection Lens, with mount	19,015	WUUNE	30.00
50mm Stereo Projection Unit f/3.5 with polarizing filters and stereo image adjusting mechanism	19,910	IMPUU	129.00
Carrying Case for Prado 150 Projector	14,665	DYTUU	12.60
Microfilm Reader			
Microfilm Reading Apparatus for reading 2 x 2 inch slides or 35mm film strips (film strip attachment No. 19,025 required). Consisting of:	19,005	DYUUI	124.00
Prado "150" Projector with special condenser for 50mm lens with bulb and slide changer, but without projection lens	19,010	DUUOI	49.00 *
Eimar 50mm f/3.5 coated projection lens without Iris diaphragm, in focusing mount	19,015	WUUNE	30.00
Reading Box accommodating Prado "150" projector (Cat. No. 19,010) with wide projection surface set at convenient viewing angle and shielded from outside light, with swing-out mirror permitting projected image on viewing screen or outside screen	19,020	SHUUC	45.00

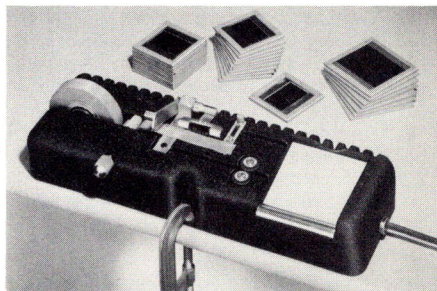
* Includes Federal Manufacturer's Excise Tax.

Projection Accessories

19,960	KPGSTV	Polarizing Stereo Viewing Glasses. For viewing stereo transparencies projected through "V" orientated polarizers. Quality frames and lenses, similar to regular spectacles.....	3.60
19,908	ATDCIM	Adapter fitting 50mm Stereo Projection Unit IMPUU to T.D.C. model "D" projector.....	\$18.00

SLIDE BINDING

A picture worth taking is worth preserving. No matter how carefully you store and handle your unmounted color transparencies, they will collect dust, finger marks and scratches. To keep them perfect, you should take them out of their cardboard mounts and bind them between glass. Then they are safe and you can easily clean the glass cover without ever touching the transparency itself.



Bindomat Transparency Binder

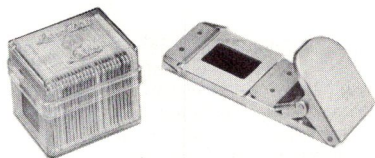
Another advantage to binding your slides is the steady focal plane you get. Regardless of how well your projector is cooled, a transparency absorbs heat and will expand. When it is in a cardboard mount it "pops" (forming a saucer shape) and goes out of focus on the screen. Then you must refocus your lens. If you mount your transparencies between glass, they cannot "pop" and you need never refocus or apologize to your audience.

What's more, when you use the Bindomat, slide-binding is fun! The Bindomat measures, cuts and aligns the binding tape; it seals the cover glass under pressure and has an illuminated platen to help you put the transparencies in their masks. The tape channel will take slides up to $2\frac{7}{16}$ inches square and has an adjustable stop for 2 x 2 inch slides. Slots at the back of the Bindomat hold your slides while you are working on them. A "C" clamp comes with the Bindomat to clamp it to your work table.

<i>Catalog Number</i>	<i>Code Word</i>	<i>Item</i>	<i>Retail Price</i>
15,205	DAMOT	Bindomat for mounting transparencies between 2 x 2 inch glass plates. Includes 100 glass plates, 100 masks, roll of binding tape and "C" clamp. . .	\$ 19.50
15,210	DAMCO	Bindomat Replacement Spring36
15,215	DACMO	Bindomat Replacement Tape Core24
15,220	DABRB	Bindomat Replacement Bulb16
15,190	UGRIN	Glass Plates with ground edges for mounting transparencies; box of 100 . .	1.50
15,195	USMAS	Silvered Masks (2 x 2 inch) with 24 x 36mm aperture for masking transparencies; box of 100	1.00
15,197	USSTMA	Stereo Masks (Silvered). For masking Stemar stereo transparencies when mounted between 2" x 2" glass; box of 5096
15,200	TIEUP	Cloth Binding Tape ($\frac{1}{2}$ inch wide) for use with Bindomat. 70 foot roll, red only	1.50

PRO-COLOR BINDERS

The new Leitz Pro-Color slide binders offer you the fastest method we know of to mount 35mm transparencies permanently between glass. After you have sandwiched your transparency between the optically finished, uniformly thin cover glasses, it is only a matter of seconds to seal it securely in the metal binder. Two pressures on the special Proloc quick-fastener seal all four sides. Result: slides so thin and so uniform that they work perfectly in automatic changers.



Pro-Color slide binders come in boxes of 25, along with five extra metal cover frames. The extras can be used if you damage some of the original metal covers or if you want to rebind a slide. Along with the binders and cover glasses, you get a self-adhesive label to identify each slide. And you can use the transparent plastic box in which the binders come to store bound slides.

Another valuable feature of the Pro-Color slide binding system is metal masks to prevent Newton's rings which sometimes appear when the transparency touches the surface of the cover glass. These do not come with each box of binders, but you can get them separately.

<i>Catalog Number</i>	<i>Code Word</i>	<i>Item</i>	<i>Retail Price</i>
15,250	PROCOL	Pro-Color 2" x 2" metal slide mounts for double frame 35mm transparencies. Box of 25.....	\$3.00
15,255	PRONRE	Metal Masks for preventing Newton's rings. Package of 50.....	1.20
15,257	PROSTM	Stereo Masks. For masking Stemar stereo transparencies in Pro-Color 2" x 2" mounts; box of 50.....	1.20
15,275	PROLOC	Proloc Rapid Fastener for sealing Pro-color mounts; lever operated.....	1.50

Components

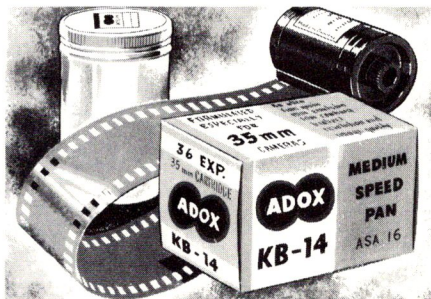
15,260	PROLAB	Labels (self-adhesive), for slide identification. Package of 10 sheets, 15 labels per sheet.....	1.20
15,265	PRORCF	Metal Cover Frames. Replacements; use when rebinding. Package of 20..	.66
15,270	PROGPR	Cover Glass Replacements (35 x 38mm). Package of 20.....	.54
15,280	PROBOX	Plastic Box (transparent). Will hold 25 Pro-Color mounts.....	.39

MISCELLANEOUS

ADOX FILM

Your lens and film are a team when it comes to taking pictures. Furthermore, since the resolution of Leica lenses is so extremely high, you must have a truly high-resolution film to get the most from them.

So that you can be sure of making consistently crisp, minutely detailed negatives, E. Leitz, Inc., now distributes through your Franchised Leica Dealer, a film whose resolution and fineness of grain are really outstanding. This is ADOX film, made by one of the oldest photographic manufacturers in the world—the Dr. C. Schleussner Fotowerke, GmbH, Germany.



ADOX 35mm differs from ordinary films. It is formulated specifically for making Leica-sized negatives. That is, it has a single, exceedingly thin layer of panchromatic emulsion which resolves very minute detail. What's more, its grain is ultra-fine, yet you get speed up to 80 ASA, depending on the film type you choose. There are three types, each on a safety base. The advantages of Adox emulsions are also available to you in 120 size roll film.

Characteristics

ADOX KB-14 (ASA 16 Daylight) is a medium speed panchromatic film with ultra-fine grain and superb contrast. Its resolution is unsurpassed for critical work.

ADOX KB-17 (ASA 32 Daylight) is a fine-grain panchromatic film of high speed and excellent contrast; it is unsurpassed for general photography.

ADOX KB-21 (ASA 80 Daylight) has a super-speed panchromatic emulsion which combines the highest of three ADOX emulsion speeds with fine grain and excellent contrast. It is a standout film for pictures in difficult light.

Resolution

Most resolution tests use a lined grid placed on the emulsion surface for direct exposure by parallel light rays and without a camera. The resulting resolution figures, which do not take into account the emulsion thickness, are higher than test figures obtained with a lens. The rays of light emerging from a lens form a cone which penetrates the emulsion, recording a given "point" in a size larger than its image. The resolution figures for ADOX film are all the more remarkable for the fact that they are based on actual photographs of test charts rather than the usual method.

Here are the results:

KB-14	140 lines per mm
KB-17	110 lines per mm
KB-21	90 lines per mm

Although you should develop ADOX film yourself to take full advantage of its unsurpassed resolution, you can also get good results when you send it to a photofinisher.

ADOX is not merely another among an already wide choice of films for your Leica. It is the result of a big step forward in film technology—a step you can easily take toward realizing the full potential, sharpness and resolution of your Leica lenses.

36 EXPOSURE DAYLIGHT CARTRIDGE

(35MM)

Catalog Number	Code Word	Item	Retail Price
15,600	ADOSDC	Adox KB-14 Film (Exposure Index 16 daylight, 12 tungsten).....	\$1.30*
15,605	ADOMDC	Adox KB-17 Film (Exposure Index 32 daylight, 25 tungsten).....	1.30*
15,610	ADOFDC	Adox KB-21 Film (Exposure Index 80 daylight, 64 tungsten).....	1.30*

(Available to dealers only in cartons of 10 cartridges each.)

50 FOOT ROLL IN METAL CAN

(35MM)

15,650	ADOSBL	Adox KB-14 Film (Exposure Index 16 daylight, 12 tungsten).....	4.80
15,655	ADOMBL	Adox KB-17 Film (Exposure Index 32 daylight, 25 tungsten).....	4.80
15,660	ADOFBL	Adox KB-21 Film (Exposure Index 80 daylight, 64 tungsten).....	4.80

ADOX "120" ROLL FILM

15,625	ADOSRF	Adox R-14 Roll Film: 120 size (Exposure Index 16 daylight, 12 tungsten) ..	\$.50*
15,630	ADOMRF	Adox R-17 Roll Film: 120 size (Exposure Index 32 daylight, 25 tungsten) ..	.50*
15,635	ADOFRF	Adox R-21 Roll Film: 120 size (Exposure Index 80 daylight, 64 tungsten) ..	.50*

(Available to dealers only in cartons of 25 rolls each.)

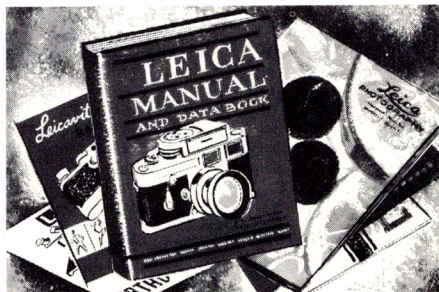
Exposure Indexes are for meters and tables calibrated for A.S.A. ratings.

* Including Federal Manufacturer's Excise Tax.

PUBLICATIONS

The pleasure or profit you get from photography is largely measured by how good your pictures are. You needn't take an extensive course in photography to enjoy your hobby, but you should know its fundamentals.

Sharing your photographic adventures and discussing your mutual interests with other Leica owners is the best way to keep your interest high and to improve your pictures. You will find it helpful to join your local camera club and also The Photographic Society of America—the national organization dedicated to the betterment of photography. If your interests are technical or in some specialized branch of photography, you will find several societies catering to you. You should have one or more good books on photography in your library.



MAGAZINES

The magazine LEICA PHOTOGRAPHY binds Leica owners in a great fraternity; its pages discuss your mutual problems and explain how best to use your Leica equipment. Writings of timely interest, pictures taken by other Leica owners and educational "How To Do It" articles are regular features. LEICA PHOTOGRAPHY is published quarterly by E. Leitz, Inc., New York, and Leica owners in the United States and its possessions may receive it without charge by sending their name and address and the serial numbers of their Leica and lenses to:

**Registration Department
E. Leitz, Inc.
468 Fourth Avenue
New York 16, N. Y.**

Non-Leica owners may place their subscription for LEICA PHOTOGRAPHY with their Leica Franchised Dealer.

LEICA PHOTOGRAPHY

Single Copies	\$.25
Domestic Subscriptions to non-Leica owners, per year....	1.00
Foreign Subscriptions to all persons, per year.....	2.00

The magazine LEICA FOTOGRAFIE, published six times a year in Germany, may be obtained in either English or German editions by subscription from:

**Rayelle Foreign Publications
5700 Oxford Street
Philadelphia, Pennsylvania**

BOOKS

More books have been published, in English and foreign languages, on the Leica and its use than on any other camera. The more outstanding of these are listed here and you may get them from your *Leica Dealer*. Do not write to E. Leitz, Inc.

Catalog Number	Code Word	Item	Retail Price
20,010	LIMAN	Leica Manual and Data Book. An authoritative book on the Leica, its accessories and their uses. Has 456 pages covering all branches of Leica photography. Data on all Leicas including the M 3. Charts, tables. Cloth bound.	\$ 6.00
20,012	PWLCB	My Experiences in Color Photography by Dr. Paul Wolff. A comprehensive course in color photography illustrated with 54 full page Leica color photographs; 151 pages, translated from the German, deluxe cloth binding, with gold stamping.	10.00
20,014	PLBKEE	Pocket Leica Book by Theo Kisselbach. An authoritative book covering the Leica, its accessories and their uses. Basic principles and theory of Leica photography explained in non-technical language. Hard covers, 192 pages, translated from the German.	2.95
20,016	TLWAME	The Leica Way by Andrew Matheson. A 418 page illustrated book packed with information on the construction and use of the Leica, its lenses and accessories. The Leica M 3 is fully discussed as well as discontinued models of the Leica. 88 Leica photographs; 249 diagrams; 31 pages of tables and formulas. Second Edition; cloth bound.	4.50
20,018	WBTMM	35mm Color Magic by Walther Benser. An instructive, amusingly written book on Leica color photography by Europe's outstanding lecturer and writer on the subject. Hard covers, over 200 pages with 40 full color plates	6.90
20,026	LIPPHS	The Leica in Professional Practice by Heinrich Stockler. A compilation by the editor of <i>Leica Fotografie</i> of 27 articles on professional photography; subjects range from Leica technique through journalistic and commercial photography to the use of Leica in science and medicine; each chapter written by an expert in his field. Hard covers, 62 four-color plates, 200 black-and-white illustrations, 340 pages. Translated from the German. . .	9.95
20,020		Leica Instruction Book for models If, IIf and IIIf.35
20,022		Leica Instruction Book for model M 3.35
20,000	LPBGL	Leica Photography Binder (9½ x 11½ inches) holding up to 8 copies of Leica Photography. Hard cover finished in green leatherette with embossed gold lettering.	3.00
20,005	LEBBM	Leica Binder (7 x 9 inches), multiple ring, 1 inch capacity, for holding Leica booklets and literature. Flexible cover finished in blue morocco with gold stamping. Supplied with 5 index separators and registration card	1.35

FREE LITERATURE AVAILABLE ON REQUEST

1354 Focomat Enlarger	1386 Correx Developing Tank
1356 Leica Lenses	8806 Chico Flash Unit
1362 Bellows Focusing Device	1387 Leica Flash Unit (CEYOO)
1379 Leicavit Rapid Winder	1388 Portable Copying Equipment
8187 Leitz Prism Binoculars	1390 Slow-Speed Attachment
1384 Viewfinders	1391 Flash Factor Tables
	1392 Leica-Meter 2

LEICA LENS DATA

Focal Length	Lens	Aperture		Angle	Class	Mount	Focusing	Click Diaphragm	Coupling	Flange Diameter	Weight Ounces	Minimum Focus	Minimum Focus Area (Inches)	Application
		Maximum	Minimum											
28mm	Summaron	f/5.6	f/22	75.4°	Wide angle	Rigid	Parallel *	Yes	Rangefinder	36mm	5.25	3.5'	34 x 51	Interiors Architectural Panoramic
33mm	Stemar	f/3.5	f/11	47.5°	Stereo	Rigid	Parallel *	No	Rangefinder	50mm	4.5	3.5'	22 x 28	Stereo
35mm	Summaron	f/3.5	f/22	64°	Wide angle	Rigid	Rotating* & Parallel	Yes	Rangefinder	36mm & 42mm	5.25 & 5.50	3.5'	27 x 40.5	Interiors Architecture Panoramic
50mm	Elmar	f/3.5	f/22	45°	Standard	Collapsible	Rotating*	No & Yes	Rangefinder	36mm & 42mm	4 & 5	3.5'	18 x 27	General Copying Macro
50mm	Summicron	f/2	f/16	45°	Standard	Collapsible	Parallel *	Yes	Rangefinder	42mm	8 & 8.25	3.5'	18 x 27	General Action Poor light Close-up
50mm	Summarit	f/1.5	f/16	45°	Standard	Rigid	Parallel *	Yes	Rangefinder	43mm	10.5 & 11.5	3.5'	18 x 27	General Existing light Fast action
85mm	Summarex	f/1.5	f/16	28°	Long focus	Rigid	Rotating*	Yes	Rangefinder	59.8mm	21	5'	15.5 x 23	Existing light Theatrical Fast action Portraiture
90mm	Elmar	f/4	f/32	27°	Long focus	Rigid & Collapsible	Rotating* & Parallel	No & Yes	Rangefinder	36mm & 42mm	7 & 9.5 & 12	3.5'	9.5 x 14.25	Animals Sports Landscapes Portraiture Close-up
125mm	Hektor	f/2.5	f/22	20°	Long focus	Rigid Short	Rotating*	Yes	Visoflex	59.8mm	20.5	4'	7.5 x 11.25	Portraiture Theatrical Existing light
135mm	Hektor	f/4.5	f/32	19°	Long focus	Rigid Long	Parallel *	Yes	Rangefinder	36mm & 42mm	13 & 15.5	5'	8.75 x 13	Animals Sports Distance Portraiture Close-up
135mm	Hektor	f/4.5	f/32	19°	Long focus	Rigid Short	Rotating*	No & Yes	Visoflex	36mm & 42mm	8 & 8.25	5'	8.75 x 13	
200mm	Telyt	f/4.5	f/32	12°	Telephoto	Rigid Short	Rotating*	No	Visoflex	50.5mm	17	10'	12.25 x 18.5	Sports Wild life Distance Portraiture
400mm	Telyt	f/5	f/32	6°	Telephoto	Rigid Short	Rotating*	No	Visoflex	91mm	76	25'	16 x 24	Distance Wild life Sports

VISOFLEX: The reflex housing has an equivalent extension of 62.5mm and may be used with rangefinder-coupling lenses for close-up photography.

*Where a lens is listed with both Rotating & Parallel focusing, Parallel refers to bayonet-mounted lenses (except the Rigid 90mm Elmar which is Rotating). When two or more flange diameters or weights are given, the larger figure applies to the bayonet-mounted lens.

PROJECTION TABLES • PROJECTION DISTANCE AND SCREEN IMAGE SIZE

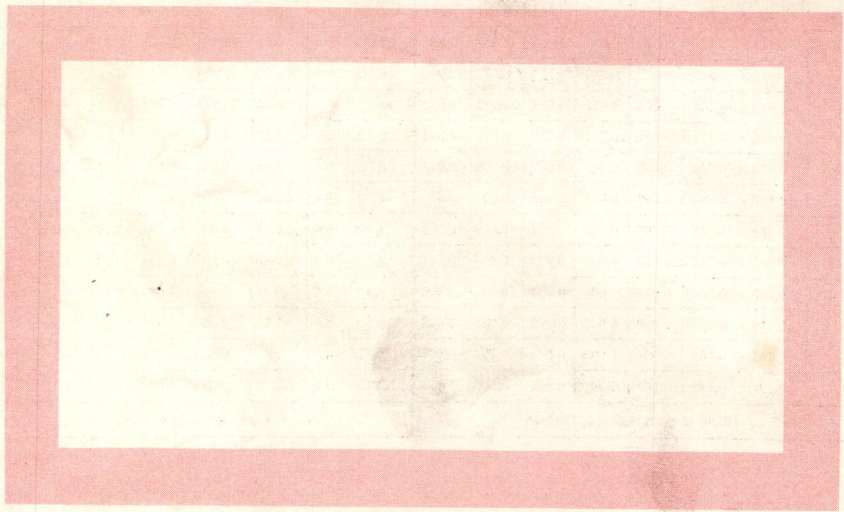
Distance	2 x 2 INCH (5 x 5) SLIDES WITH 24 x 36mm FORMAT						2 3/4 x 2 3/4 INCH (7 x 7) SLIDES WITH 6 x 6cm FORMAT			STEREO 2 x 2 INCH SLIDES WITH 24 x 36mm FORMAT (18 x 24mm PAIR)		
	Focal Length of Lens						Focal Length of Lens			Focal Length of Lens		
	85mm	100mm	120mm	150mm	200mm	250mm	150mm	200mm	250mm	85mm	100mm	120mm
10'	2'8" x 4'	2'3" x 3'5"					3'5" x 3'5"			2' x 2'8"	1'8" x 2'3"	
13'	3'5" x 5'3"	2'9" x 4'6"	2'5" x 3'8"				4'7" x 4'7"	3'3" x 3'3"		2'7" x 3'5"	2'3" x 2'9"	1'10" x 2'5"
16'	4'3" x 6'6"	3'8" x 5'6"	3' x 4'7"	2'5" x 3'8"			5'7" x 5'7"	4'1" x 4'1"	3'3" x 3'3"	3'3" x 4'3"	2'9" x 3'8"	2'3" x 3'
20'	5'4" x 8'2"	4'6" x 6'11"	3'9" x 5'9"	3' x 4'7"	2'3" x 3'5"		7'1" x 7'1"	5'3" x 5'3"	4'1" x 4'1"	4'1" x 5'4"	3'5" x 4'6"	2'10" x 3'9"
23'	6'2" x 9'4"	5'3" x 7'11"	4'4" x 6'7"	3'5" x 5'3"	2'8" x 4'	2'2" x 3'3"	8' x 8'	6'1" x 6'1"	4'9" x 4'9"	4'8" x 6'2"	3'11" x 5'3"	3'3" x 4'4"
26'	7' x 10'8"	5'11" x 9'	4'11" x 7'6"	3'11" x 6'	3' x 4'7"	2'6" x 3'7"	9'2" x 9'2"	6'11" x 6'11"	5'5" x 5'5"	5'4" x 7'	4'6" x 5'11"	3'9" x 4'11"
30'	8'1" x 12'3"	6'10" x 10'4"	5'8" x 8'8"	4'6" x 6'11"	3'5" x 5'3"	2'9" x 4'6"	10'8" x 10'8"	7'11" x 7'11"	6'3" x 6'3"	6'1" x 8'1"	5'2" x 6'10"	4'4" x 5'8"
33'	8'11" x 13'6"	7'6" x 11'6"	6'3" x 9'6"	5' x 7'7"	3'9" x 5'9"	3' x 4'7"	11'8" x 11'8"	8'8" x 8'8"	6'11" x 6'11"	6'9" x 8'11"	5'9" x 7'6"	4'9" x 6'3"
36'		8'2" x 12'6"	6'10" x 10'4"	5'5" x 8'3"	4'3" x 6'6"	3'5" x 5'3"	12'10" x 12'10"	9'6" x 9'6"	7'7" x 7'7"		6'3" x 8'2"	5'2" x 6'10"
40'		9'2" x 14'1"	7'7" x 11'7"	6'1" x 9'3"	4'9" x 7'1"	3'9" x 5'9"	14'1" x 14'1"	10'8" x 10'8"	8'6" x 8'6"		7' x 9'2"	5'9" x 7'7"
43'			8'2" x 12'6"	6'7" x 10'	5'1" x 7'7"	4'1" x 6'1"		11'6" x 11'6"	9'2" x 9'2"			6'3" x 8'2"
46'			8'9" x 13'1"	7' x 10'8"	5'5" x 8'3"	4'3" x 6'6"		12'4" x 12'4"	9'10" x 9'10"			6'6" x 8'9"
49'				7'5" x 11'3"	5'8" x 8'8"	4'6" x 6'11"		13'1" x 13'1"	10'6" x 10'6"			
52'				7'11" x 12'	6'3" x 9'6"	4'11" x 7'6"		13'9" x 13'9"	11'2" x 11'2"			
56'					6'7" x 10'	5'3" x 7'11"			11'10" x 11'10"			
59'					7'1" x 10'9"	5'7" x 8'4"			12'8" x 12'8"			
62'					7'5" x 11'3"	5'11" x 9'			13'1" x 13'1"			
65'					7'9" x 11'6"	6'3" x 9'6"						
69'					8'2" x 12'6"	6'7" x 10'						
72'					8'6" x 12'9"	6'10" x 10'4"						
75'					8'10" x 13'5"	7' x 10'8"						
79'						7'7" x 11'7"						
82'						7'10" x 11'8"						
85'						8' x 12'2"						
88'						8'2" x 12'6"						
92'						8'9" x 13'1"						
95'						9' x 13'7"						

MICRO PROJECTION ATTACHMENT						
25mm Summar f/2.8 — 10mm Stage Aperture						
Screen Distance	6'	9'	12'	15'	18'	21'
Magnification	72 X	109 X	145 X	182 X	219 X	255 X
Image Size	2'4"	3'7"	4'9"	6'	7'2"	8'4"

RATIOS - AREAS COVERED - DEPTH OF FIELD - EXPOSURE FACTORS
(BASED ON 24 x 36mm LEICA FORMAT)

RATIO	ENGLISH SYSTEM						METRIC SYSTEM						EXPOSURE FACTOR
	Area in Inches	Total Depth of Field in Inches					Area in mm	Total Depth of Field in Millimeters					
		f/4	f/5.6	f/8	f/11	f/16		f/4	f/5.6	f/8	f/11	f/16	
1:20	18.9 x 28.4	4.41	6.18	8.85	12.1	17.7	480 x 720	112.0	156.8	224.0	308.0	448.0	1.1 X
1:18	17 x 25.5	3.59	5.05	7.17	9.94	14.4	432 x 648	91.2	127.7	182.4	250.8	364.8	1.1 X
1:17	16.2 x 24.2	3.22	4.50	6.43	8.85	12.8	408 x 612	81.6	114.2	163.2	224.4	326.4	1.1 X
1:16	15.1 x 22.6	2.86	4.02	5.72	7.90	11.4	384 x 576	72.5	101.6	145.1	199.5	290.1	1.1 X
1:15	14.2 x 21.3	2.52	3.53	5.05	6.95	10.1	360 x 540	64.0	89.6	128.0	176.0	256.0	1.1 X
1:14	13.2 x 19.8	2.21	3.09	4.41	6.08	8.84	336 x 504	56.0	78.4	112.0	154.0	224.0	1.1 X
1:13	12.3 x 18.5	1.91	2.68	3.83	5.28	7.66	312 x 468	48.5	68.0	97.1	133.5	194.1	1.2 X
1:12	11.3 x 16.9	1.64	2.30	3.28	4.50	6.55	288 x 432	41.6	58.2	83.2	114.4	166.4	1.2 X
1:11	10.4 x 15.6	1.39	1.94	2.77	3.82	5.56	264 x 396	35.2	49.3	70.4	96.8	140.8	1.2 X
1:10	9.45 x 14.2	1.15	1.62	2.32	3.18	4.62	240 x 360	29.3	41.1	58.7	80.7	117.3	1.2 X
1:9	8.51 x 12.8	0.945	1.32	1.89	2.60	3.78	216 x 324	24.0	33.6	48.0	66.0	96.0	1.2 X
1:8	7.56 x 11.3	0.758	1.06	1.51	2.08	3.03	192 x 288	19.2	26.9	38.4	52.8	76.8	1.3 X
1:7	6.61 x 9.92	0.588	0.825	1.18	1.62	2.36	168 x 252	14.9	20.9	29.9	41.1	59.7	1.3 X
1:6	5.66 x 8.51	0.441	0.620	0.885	1.21	1.77	144 x 216	11.2	15.7	22.4	30.8	44.8	1.4 X
1:5	4.72 x 7.09	0.315	0.440	0.632	0.867	1.26	120 x 180	8.0	11.2	16.0	22.0	32.0	1.4 X
1:4	3.78 x 5.66	0.209	0.296	0.422	0.580	0.840	96 x 144	5.3	7.5	10.7	14.7	21.3	1.6 X
1:3	2.84 x 4.26	0.126	0.178	0.252	0.347	0.505	72 x 108	3.2	4.5	6.4	8.8	12.8	1.8 X
1:2	1.89 x 2.84	0.063	0.087	0.126	0.173	0.252	48 x 72	1.6	2.2	3.2	4.4	6.4	2.3 X
1:1.5	1.42 x 2.13	0.039	0.055	0.079	0.110	0.158	36 x 54	1.0	1.4	2.0	2.8	4.0	2.8 X
1:1.33	1.26 x 1.89	0.031	0.047	0.067	0.091	0.134	32 x 48	0.8	1.2	1.7	2.3	3.3	3.1 X
1:1	0.945 x 1.42	0.020	0.031	0.043	0.059	0.083	24 x 36	0.5	0.8	1.1	1.5	2.1	4 X
1.5:1	0.630 x 0.945	0.012	0.016	0.023	0.032	0.047	16 x 24	0.30	0.41	0.59	0.81	1.19	6 X
2:1	0.472 x 0.709	0.008	0.011	0.016	0.022	0.032	12 x 18	0.20	0.28	0.40	0.55	0.80	9 X
3:1	0.314 x 0.472	0.005	0.007	0.010	0.013	0.018	8 x 12	0.12	0.17	0.24	0.33	0.47	16 X
4:1	0.236 x 0.354	0.003	0.005	0.007	0.009	0.013	6 x 9	0.08	0.12	0.17	0.23	0.33	25 X
5:1	0.189 x 0.284	0.002	0.004	0.005	0.007	0.010	4.8 x 7.2	0.06	0.09	0.13	0.18	0.26	36 X
6:1	0.158 x 0.237	0.002	0.003	0.004	0.006	0.008	4.0 x 6.0	0.05	0.07	0.10	0.14	0.21	49 X
6.5:1	0.145 x 0.217	0.002	0.003	0.004	0.005	0.007	3.7 x 5.5	0.05	0.07	0.09	0.13	0.19	56 X
7:1	0.135 x 0.202	0.002	0.002	0.004	0.005	0.007	3.4 x 5.1	0.04	0.06	0.09	0.12	0.17	64 X
8:1	0.118 x 0.177	0.002	0.002	0.003	0.004	0.006	3.0 x 4.5	0.04	0.05	0.08	0.10	0.15	81 X
9:1	0.105 x 0.158	0.001	0.002	0.003	0.004	0.005	2.7 x 4.0	0.03	0.05	0.07	0.09	0.13	100 X
10:1	0.094 x 0.142	0.001	0.001	0.002	0.003	0.005	2.4 x 3.6	0.03	0.04	0.06	0.08	0.12	121 X
Circle of confusion = 1/750 inch							Circle of confusion = 1/30 mm						

The products listed in this Directory are sold only through franchised Leica dealers, who are distinguished by the display of the Leica dealer emblem.



FILE THIS IN YOUR LEICA BINDER