

Kodak

Materials and Accessories for Professional and Amateur Photographers

London : 1-2, Gracechurch Street ; 57 Strand ;
184-6, Regent Street ; 60, Cheapside ;
115, Oxford Street ; 59, Brompton Road ;
91, Bishopsgate ; 96, Victoria Street.

Birmingham : 45, Corporation Street.

Liverpool : 70, Lord Street.

Newcastle-on-Tyne : 34, Grainger Street.

Glasgow : 46, Buchanan Street.

Dublin : 89, Grafton Street.

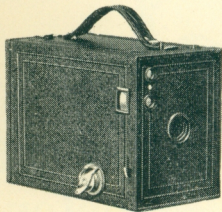
Associated Companies in

Austria, Belgium, Denmark, France, Greece, Holland, Hungary, Italy,
Portugal, Spain, Switzerland, Turkey, Egypt, Palestine, East Africa, South
Africa, Argentine, Brazil, Canada, Mexico, U.S.A., China, Japan, India,
Straits Settlements, Australia, New Zealand.

Kodak Ltd., Kingsway, London, W.C.2

Box "Brownies"

THE SIMPLEST CAMERAS



Children and beginners find the Box "Brownie" very easy to use. It is the simplest form of camera, yet because of its excellent design it makes first rate pictures. "Kodak" workmanship and durability. Good quality lenses and Time and Instantaneous Shutter.

Prices :

		£	s.	d.
No. 0 "Brownie" for pictures	$2\frac{1}{2} \times 1\frac{1}{8}$ ins.	0	10	6
No. 2	$3\frac{1}{4} \times 2\frac{1}{4}$ "	0	12	6
No. 2A	$4\frac{1}{4} \times 2\frac{1}{2}$ "	0	17	6
No. 2C	$4\frac{7}{8} \times 2\frac{7}{8}$ "	1	5	0
No. 3	$4\frac{1}{4} \times 3\frac{1}{4}$ "	1	2	6

Vest Pocket "Kodak"

MODEL B

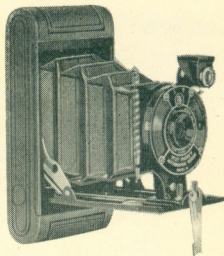
Handiness is the outstanding feature of the Vest Pocket "Kodak." It is so small and light that it really will go comfortably into a waistcoat pocket, just like a cigarette case, or into a lady's wrist-bag.

The Model B is "fixed-focus" and is, therefore, always ready for instant use.

The equipment—Meniscus lens, Rotary shutter for Time and Instantaneous exposures, four diaphragm apertures, brilliant reversible finder, tripod sockets and Autographic device (an exclusive "Kodak" feature).

Strongly made in leatherette-covered metal.

The Vest Pocket "Kodak" Model B represents the utmost possible value for money.

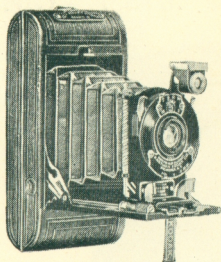


Price : £1 5 0

Kodak Ltd., Kingsway, London, W.C.2

Vest Pocket "Kodak"

SERIES III



Has all the handiness of the Model B together with advanced equipment and a superior finish. With the "Kodak" Anastigmat lens this model becomes an 'all-weather' "Kodak." Working at $f6.3$ good snapshots can be made even in poor light. From the $2\frac{1}{2} \times 1\frac{3}{8}$ inch negatives magnificent enlargements can be made. Adjustable focussing with scale; Shutter: Time and Instantaneous (to $1/50$ th or $1/100$ th second). Iris diaphragm; brilliant re-

versible finder; two tripod sockets; Autographic device.

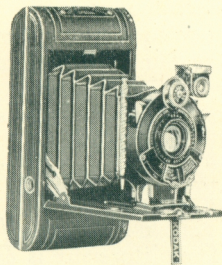
Prices:

	£	s.	d.
With "Kodex" shutter and "Kodar" $f7.9$ lens	2	10	0
With "Diomatic" shutter and "Kodak" Anastigmat $f6.3$ lens	4	0	0

Also with Ross and Zeiss lenses.

Vest Pocket "Kodak" Special

The Vest Pocket "Kodak" Special, the *de luxe* version of the Vest Pocket "Kodak" Series III, combines the utmost refinement of style with highly advanced equipment. Very fast 'all-weather' "Kodak" Anastigmat Lens ($f4.5$ or $f5.6$). Time and Instantaneous shutter ($1/10$ to $1/100$ second). A special feature is the sliding exposure scale on the "Diomatic" shutter which indicates the right exposure to give with each stop. Real leather; heavy nickel and black enamel finish.



Brilliant reversible finder, two tripod sockets, and the Autographic Device.

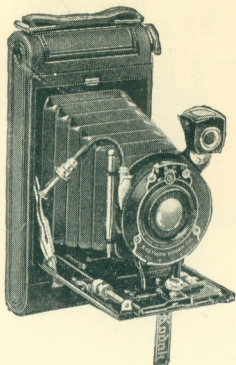
Prices:

	£	s.	d.
With "Kodak" Anastigmat Lens $f5.6$	5	0	0
With "Kodak" Anastigmat Lens $f4.5$	6	0	0

Also fitted with Zeiss and Ross lenses.

Kodak Ltd., Kingsway, London, W.C.2

Pocket "Kodaks"



The Pocket "Kodaks" are compact and inexpensive folding cameras, simple to use and convenient to carry. In four sizes to take pictures $3\frac{1}{4} \times 2\frac{1}{4}$ ins., $4\frac{1}{4} \times 2\frac{1}{2}$ ins., $4\frac{7}{8} \times 2\frac{7}{8}$ ins. and $5\frac{1}{2} \times 3\frac{1}{4}$ ins. (postcard size).

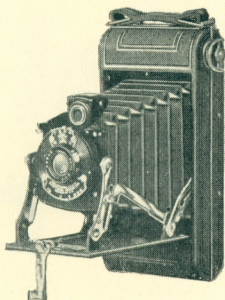
All Pocket "Kodaks" have speeded shutters with 'Time' and 'Brief Time' actions; brilliant reversible finder, two tripod sockets and the Autographic Device. Note the range of different lens equipments available with these cameras.

Prices :

	No. 1			No. 1A			No. 2C			No. 3A		
	£	s.	d.	£	s.	d.	£	s.	d.	£	s.	d.
With Meniscus lens and "Kodex" shutter ..	2	7	6	2	12	6	3	3	0	3	15	0
With "Kodar" f7.9 lens and "Kodex" shutter ..	3	0	0	3	5	0	4	0	0	4	10	0
With "Kodak" Anastigmat f6.3 lens and "Kodex" shutter ..	3	17	6	4	5	0	5	5	0	5	17	6

Pocket "Kodaks" Series II

The "Kodak" of this series has all the advantages of a box-form camera combined with the portability of the folding type. As the camera is opened out the lens standard springs automatically into position and is instantly ready for picture-making. There are two models, one fixed focus with a Meniscus Achromatic lens, the other a focussing model fitted with the "Kodar" f7.9 lens.



Prices :

	No. 1			No. 1A		
	£	s.	d.	£	s.	d.
With Single Achromatic lens and "Kodex" shutter ..	3	3	0	3	10	0
With "Kodar" f7.9 lens and "Kodex" shutter ..	3	17	6	4	10	0

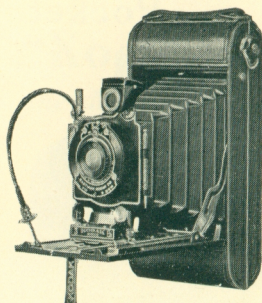
Pocket "Kodaks" Series II are also supplied with Zeiss "Tessar" f6.3 lens and "Compur" shutter.

Kodak Ltd., Kingsway, London, W.C.2

“Kodaks”

SERIES III

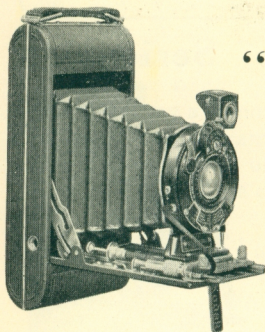
Popular models with discerning amateurs. Completely up-to-date in design, finish and equipment. Four sizes, to take pictures $3\frac{1}{4} \times 2\frac{1}{4}$, $4\frac{1}{4} \times 2\frac{1}{2}$, $4\frac{7}{8} \times 2\frac{7}{8}$ and $4\frac{1}{4} \times 3\frac{1}{4}$ inches. High grade anastigmat lenses and speeded shutters. Rising front on all except No. 1 size. Autographic.



Prices :

	No. 1 $3\frac{1}{4} \times 2\frac{1}{4}$	No. 1A $4\frac{1}{4} \times 2\frac{1}{2}$	No. 2C $4\frac{7}{8} \times 2\frac{7}{8}$	No. 3 $4\frac{1}{4} \times 3\frac{1}{4}$
With “Kodak” Anastigmat lens <i>f</i> 6.3	£ 6 10 0	£ 7 5 0	£ 7 17 6	£ 7 10 0
With “Kodak” Anastigmat lens <i>f</i> 5.6	8 12 6	9 17 6	—	10 2 6
With “Kodak” Anastigmat lens <i>f</i> 4.5	10 12 6	11 17 6	—	12 2 6

Also with Ross, Cooke and Zeiss Lenses.



“Kodaks” Special

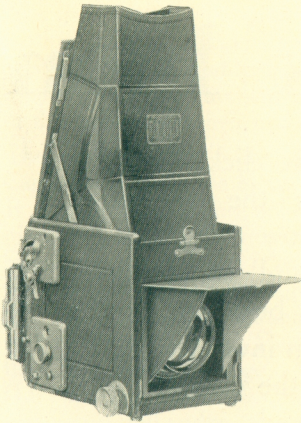
De Luxe models superbly equipped and finished. High grade anastigmat lenses and shutters. Rising fronts on all except the No. 1. Range Finders on Nos. 2C and 3A. Five sizes, to take pictures $3\frac{1}{4} \times 2\frac{1}{4}$, $4\frac{1}{4} \times 2\frac{1}{2}$, $4\frac{1}{4} \times 3\frac{1}{4}$, $4\frac{7}{8} \times 2\frac{7}{8}$ and $5\frac{1}{2} \times 3\frac{1}{4}$. All are Autographic.

Prices :

	Pocket No. 1	“Kodaks” No. 1A	Special No. 3	Autographic “Kodaks” No. 2C	Special No. 3A
With “Kodamatic” Shutter and “Kodak” Anastigmat <i>f</i> 5.6 lens	$3\frac{1}{4} \times 2\frac{1}{4}$ £ 11 0 0	$4\frac{1}{4} \times 2\frac{1}{2}$ £ 12 10 0	$4\frac{1}{4} \times 3\frac{1}{4}$ £ 12 17 6	$4\frac{7}{8} \times 2\frac{7}{8}$ £ — —	$5\frac{1}{2} \times 3\frac{1}{4}$ £ — —
“Kodak” Anastigmat <i>f</i> 4.5 lens	13 0 0	14 10 0	15 0 0	—	—
“Kodak” Anastigmat <i>f</i> 6.3 lens	—	—	—	13 10 0	14 15 0

Kodak Ltd., Kingsway, London, W.C.2

"Graflex" Cameras



"Graflex" Series C, with F2.5
Cooke Anastigmat Lens

The "Graflex" is the Press Man's Camera, or the equipment required by anyone doing difficult work under exacting conditions. It is the camera par excellence for speed.

With the "Graflex" the image is viewed on a focussing screen, and is seen full size, right way up, and right up to the moment that the exposure is made.

The construction of the "Graflex" is consonant with the serious work for which it is intended.

The body is of solid mahogany and covered with morocco leather. The metal parts are silver-plated brass oxydised to a matt finish.

The lenses fitted to these cameras are high grade anastigmats such as "Kodak" Anastigmat and the shutter the Graflex Focal Plane, with a range of speeds from $\frac{1}{10}$ th to $\frac{1}{1000}$ th of a second and 'Time' action.

There are various models and four sizes (from $3\frac{1}{4} \times 2\frac{1}{4}$ in. up to 7×5 in.).

Prices : From £25

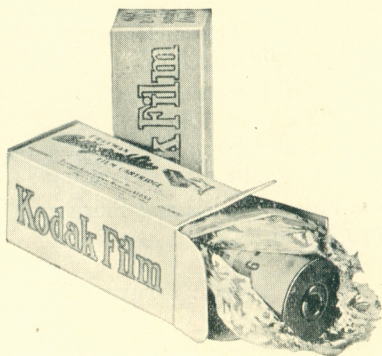
Also supplied with Ross, Cooke and Zeiss Lenses

Kodak Ltd., Kingsway, London, W.C.2

*Years of dependability have
built the reputation of*

“Kodak” Film

Wherever cameras click, “Kodak” Film is known as “the dependable film in the yellow carton.” Its wide latitude and its constant uniformity have built for it the high reputation invariably reserved for the product that leads in its line.



Kodak Ltd., Kingsway, London, W.C.2

MOTION PICTURE MAKING

The simplicity of operation and the moderate cost of motion picture making the "Kodak" Way, has so popularised cinematography that there are now thousands of amateurs who are enthusiastically devoted to this hobby and their numbers are increasing daily.

The Ciné-"Kodak"—the Amateur's Motion Picture Camera—is as simple to use as an ordinary "Kodak." It can be loaded and unloaded in daylight, and the pictures are made by simply sighting the subject in the finder and pressing the release; a spring motor makes the pictures. After exposure the spool is sent to one of the many processing stations. The finishing is done without extra charge. There are now three models in the Ciné-"Kodak" range. The latest, Model B with f1.9 lens, has made possible amateur motion picture making on dull and rainy days, and even indoors under good lighting conditions.

The "Kodak" portable projectors (for showing Ciné-"Kodak" films on the screen)—the "Kodascopes"—also present striking innovations, including a much improved Model 'C' and the 'almost human' Model B "Kodascope," self-threading, reversing, automatically focussing and rewinding. For houses unprovided with electric light circuits, a 6-volt accumulator outfit with Model C "Kodascope" is now available.

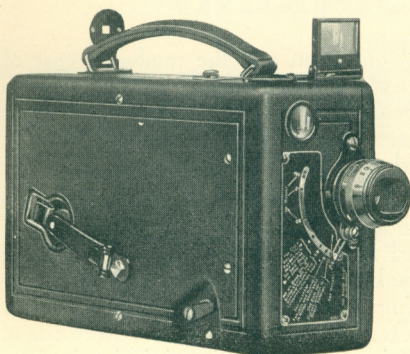
Panchromatic Ciné-"Kodak" films and Ciné-"Kodak" colour filters, now enable all the colours of landscapes, skies, costumes, flowers, to be recorded in true tone values.

In addition to the ever-growing "Kodascope" Library, from which professional film successes can be hired for the Home Cinema Show, a large and rapidly growing selection of Cine "Kodographs," which can be bought outright, is daily being drawn upon by amateurs for their private film libraries.

Kodak Ltd., Kingsway, London, W.C.2

Ciné-"Kodak" Model B

For making Motion Pictures



Ciné-"Kodak" Model B, *f*1.9 lens

The Ciné-"Kodak" Model B is a small box-form hand camera for making motion pictures. It weighs only 5 lbs. and holds 100 ft. of 16 m.m. film (equal to 250 ft. of

standard width). The mechanism is driven by a spring motor and the camera may, if desired, be placed on a flat surface and left to run by itself, so that the photographer can get into the picture himself.

It is supplied with three lens equipments, *f*6.5 and *f*3.5 and *f*1.9. The two former are fixed focus models while the ultra fast *f*1.9 (it is more than ten times as fast as the *f*6.5 lens) is fitted in a focussing mount. With the *f*1.9 lens motion picture making is possible on dull days, and even indoors with a good light from a window or a "Kodalite," the new Kodak indoor illuminator. All models are furnished with an exposure guide attached to the front of the camera.

Further information and particulars of the Ciné-"Kodak" Model A, a tripod model, on application.

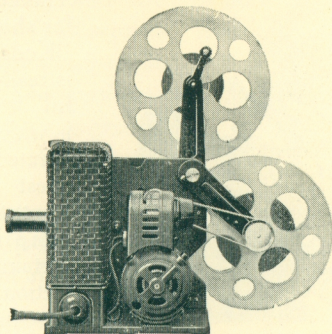
Prices :

	£	s.	d
Ciné-"Kodak" Model B with <i>f</i> 6.5 lens	18	18	0
Ciné-"Kodak" Model B with <i>f</i> 3.5 lens	25	0	0
Ciné-"Kodak" Model B with <i>f</i> 1.9 lens	31	10	0

Kodak Ltd., Kingsway, London, W.C.2

"Kodascope" Model C

For Showing Motion Pictures



A compact, portable and inexpensive projector for showing pictures made on Ciné "Kodak" Film. It can be attached to the ordinary house electric supply, and throws a brilliantly-lit 40×30 inch picture at 18 feet from the screen (with the 1 inch lens only half this distance is required). It is as easy to use as the Ciné-"Kodak" itself. Simply thread in the film, switch on the motor, adjust the focus and then sit down to enjoy the pictures. A hand-turned model for use with 6-volt accumulators is also supplied; this is for use where an electric supply is not available.

The "Kodascope" Model C is supplied complete with Lens, Electric Motor, Lamp, Still-picture device, Framing device, Motor rewind and one 400-ft. reel. It weighs only 9½ lbs.

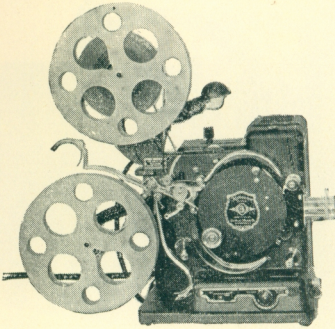
Fuller information and particulars of the "Kodascope" Model A, a model suitable for schools and lecture purposes, will be sent on application.

Prices from £18 0 0

Kodak Ltd., Kingsway, London, W.C.2

“Kodascope” Model B

The Latest Home Projector



This little projector for showing Ciné-“Kodak” pictures is really a wonderful little machine, in which are incorporated all the latest improvements that make for simplicity and certainty in projection. There is, for instance, the self-threading de-

vice, an exclusive feature. You simply switch on the motor, slip the end of the film into a slot and the self-threading device does the rest. Then there are:—the Framing Device, another exclusive feature; the Mechanical Rewind; Still Picture Device, with automatic heat-absorbing screen; Reversing adjustment, film can be run backwards as well as forward without having to stop the motor. Complete control of motor speed and light intensity is secured by means of adjustable rheostats, and the broad base and low centre of gravity ensure absence of vibration.

The “Kodascope” Model B can be run from the ordinary house supply. It holds 400 feet of 16 mm. film, and will project a 52×32 inch picture at 23 feet from the screen.

Prices :

Complete with Velvet-lined Carrying Case, two 400-ft.	£	s.	d.
Reels, one Humidor Can, two 200-watt Lamps,			
Splicing Outfit and Oiling Outfit. For use on			
100 to 120 volts	89	10	0
With Resistance for 200-250 volts	92	17	6

Kodak Ltd., Kingsway, London, W.C.2

“Kodak” Film Packs

“Kodak” Film Packs are compact and convenient. Each pack holds 12 separate “Kodak” N. C. flat films. These films are non-curling, non-halation and orthochromatic. The emulsion has an exceedingly fine grain and a long scale of gradation; it allows great latitude in exposure and gives negatives of the highest quality.

It is not necessary to expose all the twelve films before developing; any one film can be removed in the dark room without affecting the others.

“Kodak” Cut Film

A Flat Cut Film for Use in Plate Cameras

“Kodak” Cut Film has many advantages over glass plates. It is practically free from halation and gives clean, crisp negatives even when the subjects are taken against the light. It is also unbreakable, and weighs only a fraction of the weight of glass plates. The fine grain emulsion gives negatives of the highest quality—negatives which make bright, sparkling prints or enlargements.

“Kodak” Cut Film is made in two speeds—Regular and Super Speed. The Super Speed grade is extremely rapid, about twice the speed of the Regular; it should always be used when lighting conditions are poor or when very short exposures have to be given.

Kodak Ltd., Kingsway, London, W.C.2

Eastman Professional Films

Eastman Professional Films give negatives of the highest printing qualities. They are unbreakable, light, occupy little space, and are most convenient to handle.

Eastman Portrait Film

The outstanding qualities of Eastman Portrait Film are its long scale of gradation, its remarkable latitude in exposure and its practical freedom from halation. These qualities enable the photographer who uses film to get negatives in which every variation of tone, from the highest high light to the deepest shadow, is recorded.

Eastman Portrait Film is made in two speeds—Par and Super-Speed. Par Speed has a rapid emulsion and is suitable for all ordinary work. Super Speed is extremely rapid, and it is indispensable where very brief exposures are demanded or when lighting conditions are poor.

Eastman Panchromatic Film

This film is sensitive to all colours of the spectrum, including red. It is fast enough for snapshot work even when a filter is used. When used with the correct Wratten Filter, complete control of colour rendering is obtained.

Eastman Commercial Ortho Film

Is suitable for all kinds of work where general colour sensitiveness is required, but not sensitiveness to red. Used with a K.1 or K.2 Wratten Filter it gives correct renderings of the yellows in photographs of oak and mahogany furniture, and similar subjects.

Eastman Commercial Film

Has a somewhat slower emulsion than Eastman Portrait Film and is very suitable for copying.

Eastman Process Film

Eastman Panchromatic Process Film

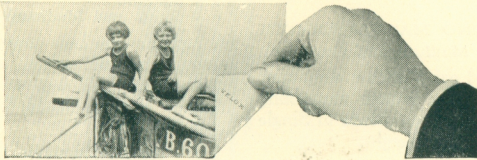
For copying drawings and subjects when an extreme degree of contrast is required. Specially adapted to the needs of the photo-engraver and lithographer. Panchromatic Process Film is sensitive to all the colours of the spectrum and is particularly suitable for three-colour work.

Kodak Ltd., Kingsway, London, W.C.2

“Velox”

The “Kodak” Gaslight Paper

*There's a Grade for the
Amateur's every need*



“Velox,” the “Kodak” Gaslight paper, is made especially to meet the needs of the amateur. It will print in any light and requires no darkroom for development. There are three grades and a variety of surfaces, so that varying types of negatives can be suited. Vigorous “Velox” is for flat, thin negatives; Soft for those of strong contrast, and Medium for average negatives. The word “Velox” is lightly printed on the back of every sheet.

Kodak Ltd., Kingsway, London, W.C.2

"Kodak" Bromide Papers

"Kodak" Bromide Papers have a high reputation for quality and reliability. They allow great latitude in exposure, and give prints and enlargements with sparkling high-lights, rich, transparent shadows and a long range of finely graded half-tones.

VELVET BROMIDE

(Soft, Medium and Contrast)

A rapid paper with a beautiful velvety surface. Tones to a rich sepia. Supplied in Single and Double Weight.

PLATINO MATTE SMOOTH

(Soft, Medium and Contrast)

A rapid paper with a dead-matt surface and texture resembling platinum paper. Made in Single and Double Weight.

PLATINO MATTE ROUGH

Similar to Platino Matte Smooth, but has a rough surface suitable for broad effects. Tones readily Single weight only, and one degree of contrast—Soft.

"NIKKO"

(Soft, Medium and Contrast)

A rapid, mauve-white paper with a highly glazed surface. Unsurpassed for the rendering of fine detail in commercial or scientific photographs, and for Press work. Single and Double Weight.

PERMANENT SMOOTH

(Soft, Medium and Contrast)

A paper with a natural surface which is nearly matt. Suitable for contact prints or enlargements. Tones to a rich sepia. Made in Single Weight only.

PERMANENT ROUGH

Resembles Permanent Smooth in every way except that it has a rough surface. Soft. Made only in Single Weight.

ROYAL TINTED

(Soft and Medium)

A rapid, cream base paper with a rough, natural surface. Lends itself particularly well to sepia toning. Made in Double Weight only.

ROYAL WHITE

A rapid, rough paper with a natural surface. Similar to Royal Tinted, but is white. Soft. Made in Double Weight only.

OLD MASTER

(Cream and White)

A heavy, rapid paper with a distinctive canvas-like texture resembling that of an old painting. Soft.

CREAM

A rapid, smooth, tinted paper, particularly suitable for sepia toning. Soft. Made in Single and Double Weight.

"KODAK" BROMOIL PAPER

Is coated with a high-grade emulsion free from any tendency to fog. Smooth White, Single Weight only; Rough White and Rough Cream, Double Weight only.

Kodak Ltd., Kingsway, London, W.C.2

“Kothena”

A Warm-Black Printing Paper of Quality



“Kothena” is the nearest approach to the perfect printing paper yet produced. It is remarkable for its superb quality, and for its extremely long scale of gradation, which enables it to render an extraordinarily wide range of tones with purity and fidelity.

The colour of the image obtained by direct development is a rich warm black; no after toning process is recommended nor is it necessary.

“Kothena,” although it gives prints of supreme quality, is a very simple paper to use, owing to the wide working latitude it allows. It is a slow paper, intended only for contact printing. Its comparatively slow speed is essential to its exceptional quality. It is made in five grades, so that every subject or type of negative can be met. Made only in double weight.

Grades :

Grade B—White Semi-Matt	Grade C—White Smooth-Matt
Grade D—White Rough-Matt	Grade E Smooth—Cream Matt
Grade E Rough—Cream Matt	

Kodak Ltd., Kingsway, London, W.C.2

“Kodura”

The Professional's Paper

“Kodura” is a high-grade developing paper which gives prints of distinctive rich warm-black tones by direct development. It has a long scale of gradation and will reproduce faithfully all the delicate variations of light and shade that appear in a good portrait negative. Sparkling high-lights, finely graded half-tones velvety shadows and a rich warm tone are the characteristic features of the “Kodura” print.

“Kodura” is a rapid paper and can, therefore, be used either for contact prints or enlargements. All grades can be sepia toned if desired.

Grade A. A single weight white paper, with a velvety, semi-matt surface.

Grade B. As Grade A, but double weight.

Grade A.C. A Single weight white paper, with a smooth matt surface.

Grade C. As Grade A.C., but double weight.

Grade D. A double weight paper, white, with a medium-rough matt surface.

Grade E Smooth. A double weight cream paper, with a smooth matt surface.

Grade E Rough. A double weight cream paper with a medium-rough matt surface.

Grade E Special. A double weight matt paper, cream, with a natural surface.

Grade E Semi-Matt. A double weight cream paper, with a velvety semi-matt surface.

Etching Brown

A paper which gives a warm, brown-black tone by developing only—a tone which gives to the print the rich mellowness of an old engraving. Etching Brown is a medium speed paper intended for contact printing, but it can be used for enlarging if a powerful illuminant is employed. Made in double weight only.

Smooth Matte White. Smooth Matte Cream.

Rough Matte Cream.

Kodak Ltd., Kingsway, London, W.C.2

“Kodesko”

A Printing Paper for Unusual Effects

“Kodesko” is the paper for unusual effects because it is an unusual type of paper. The emulsion is coated on a pearly, parchment-like base. This base is *translucent*, so that the prints can have much of the quality of a fine transparency, and they can be given a glowing warmth by loose-mounting them over light, brilliantly-coloured backing papers. The colour of the backing paper glows through the prints and suffuses the pictures with any desired tint.

“Kodesko” is a rapid paper and can be used for contact printing or for enlarging when a powerful light is available. It gives a warm-black image by direct development.

“Solio” P.O.P.

A rapid printing-out paper, rich in silver and giving bright prints which record the finest gradations. Gives pleasing tones with the combined toning and fixing bath. Made in glossy (White and Mauve), Matte and Velvet (Semi-matte).

“Solio” Self-Toning

(Gelatino-Chloride)

A self-toning paper simple to use. No gold bath required. Uniform results can be obtained with certainty. It gives prints of the finest colour, which are entirely free from double tones. Made in Glossy and Matte.

Kodak Ltd., Kingsway, London, W.C.2



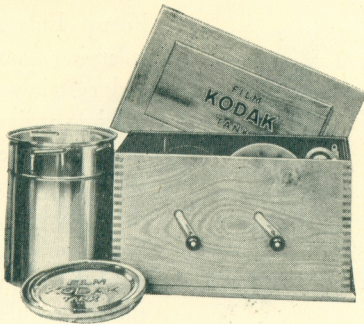
Kodatone

A Self-Toning Collodion Paper

“Kodatone” is a Collodion Printing-out Paper which gives crisp, sparkling prints, of a colour which can be varied from a rich warm sepia to a pleasing deep purple. A charming range of sepia tones is obtained by simply immersing the print in the Hypo solution. When deep purple tones are required—or any tone between sepia and purple—a preliminary bath of salt and water only is needed. “Kodatone” is simple to use and prints of fine quality and beautiful colour can be produced with the greatest ease. Made in two surfaces—Matte and Glossy.

Kodak Ltd., Kingsway, London, W.C.2

The "Kodak" Film Tank



The "Kodak" Film Tank enables the amateur to develop his negatives in his own home without mess or bother and without having to shut himself up in a dark room.

It is designed exclusively for the development of roll films by the time and temperature method; that is, developing for a definite time with a given strength of developer at a given temperature. The whole operation is so simplified that the novice can use it with success; no experience is necessary to produce negatives of the highest uniform quality.

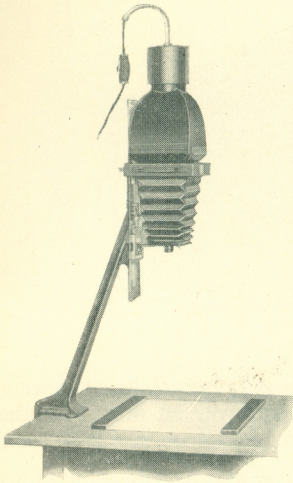
Prices :

	£	s.	d.
No. 2 $\frac{1}{2}$. (For Vest Pocket "Kodak" and Nos. 1 and 2 "Brownie" Film)	0	18	6
No. 2 $\frac{1}{2}$. (For Film up to 2 $\frac{1}{2}$ in. wide)	1	4	0
No. 3 $\frac{1}{2}$. (For Film up to 3 $\frac{1}{2}$ in. wide)	1	8	6
No. 5. (For Film up to 5 in. wide)	1	14	6
No. 7. (For Film up to 7 in. wide)	1	18	0

Kodak Ltd., Kingsway, London, W.C.2

“Kodak”

Auto-Focus Enlarger



The “Kodak” Auto-Focus Enlarger makes enlarging almost as rapid and certainly as easy as making ordinary prints. It is only necessary to slip the negative into the holder and slide the camera up or down until the picture reaches the size required. Then pull over the orange safelight shield, place a sheet of bromide paper in position and make the exposure. The

difficulty of the old condenser method of enlarging—focussing—is entirely done away with ; the image is always sharp, no matter what size the picture may be.

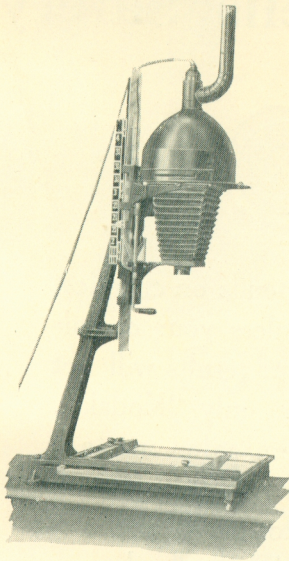
This Enlarger can be clamped to any ordinary table. Enlargements from $1\frac{1}{2}$ to $3\frac{1}{2}$ diameters can be made from negatives of any size up to and including 6×4 inches.

Price :

“Kodak” Auto-Focus Enlarger with “Kodak” Anas-	£	s.	d.
tigmat Lens, Set of 6 Flexible Metal Masks, Diffu-			
sion Disc and 6 feet of flexible cable ; no lamp	..	9	9 0

Kodak Ltd., Kingsway, London, W.C.2

Eastman Auto-Focus Enlarger



A self-focussing projection printer, designed for professional or commercial use. It takes negatives of any size up to 7×5 inches and enlarges from $1\frac{1}{2}$ to 4 times. The projected image is always sharp and ready to print, at any degree of enlargement, because the distance between the lens and negative is automatically adjusted as the camera is raised or lowered.

The Enlarger is designed for use on table or bench and is so compact that it can be used on a table as small as 30×26 inches. It is fitted with

a $7\frac{1}{2}$ inch Eastman Projection Anastigmat Lens $f4.5$. For soft focus effects a set of three Diffusion Discs is available.

A Reducing Attachment can be supplied, which gives the Enlarger a range from a four times enlargement to a two and three-quarters times reduction.

Prices :

Eastman Auto-Focus Enlarger, complete with Eastman	£	s.	d.
Projection Anastigmat Lens $f4.5$, $7\frac{1}{2}$ in. focus,			
Paper Holder, Set of 3 Diffusion Discs and			
250-watt Lamp	45	0	0
Reducing Attachment	5	12	6

Kodak Ltd., Kingsway, London, W.C.2

The Seal That Spells Safety



Photography depends on chemical processes and unless your chemicals are right your results will not be right. Use only "Kodak" Tested Chemicals, made specially for photography and tested for purity and strength. The red seal on each bottle or package guarantees the quality of the contents.

Kodak Ltd., Kingsway, London, W.C.2

A2968WP301028