



KODAK



Enlarged from a negative made on Kodak "SS" Pan Film

KODAKS

AND KODAK SUPPLIES • 1934-1935

IN SELECTING A CAMERA, CONSIDER...

- ... 1 **THE PICTURE SIZE** Among the cameras shown on the following pages you will find all of the popular amateur sizes, from $1\frac{3}{16} \times 1\frac{9}{16}$ to $3\frac{1}{4} \times 4\frac{1}{4}$ inches and 9x12 cm. Sample pictures in most of the sizes are reproduced in this catalogue. Pick the proportion that appeals to you, remembering that any good picture can be generously enlarged.
- ... 2 **THE TYPE YOU PREFER** . . . box or folding.
- ... 3 **THE VARIETY OF PICTURES** you want, and the range of conditions under which you expect to take them. These factors apply particularly to the folding type of camera. They depend largely upon the versatility of the lens and shutter (see page 24) . . . and, in some models, upon the negative materials which the camera accommodates.
- ... 4 **THE PRICE** Camera prices are determined to a great extent by the types of lenses and shutters employed, since these items represent a large part of the manufacturing cost. As pointed out above, this equipment to a large degree determines the scope of the camera.

Your dealer will be glad to help you make your selection

CANADIAN KODAK CO., Limited
TORONTO, ONTARIO



JIFFY KODAKS

SIX-16 AND SIX-20

ONCE in a decade—or even less often—you will find something in cameras as arresting as the Jiffy Kodaks. They're new in style—easy on the pocket-book—splendid picture-makers—and novel in construction. Touch a button: *Pop*—the Jiffy opens. Touch another button: *Click*—it snaps the picture. Actuated by strong extension arms, the lens, shutter, and bellows leap into position—ready for instant action!

Picture-making ability is provided by a simple built-in shutter and an unusual lens: the Twindar. This lens gives Jiffy users the advantages of "fixed" focus, plus a simple adjustment that keeps subjects in focus even when only five feet away. The Twindar increases the Jiffy's range of picture-making, as well as assuring clearer, sharper pictures at all distances.

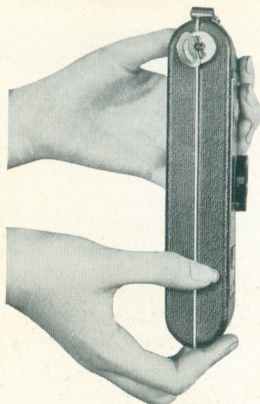
Jiffy Kodaks have box-camera simplicity, supplemented by the convenience and good looks of slim, trim folding models. They're pleasingly compact, for they utilize Eastman's smaller, all-metal film spool. Their compactness is set off by a smart, black, morocco-grain covering, and by a striking etched front. See the swank Jiffys at your dealer's.

PICTURE SIZES

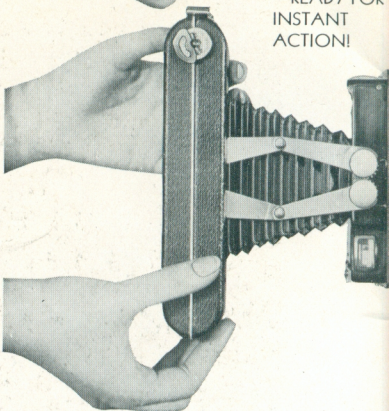
JIFFY KODAK SIX-16, 2½ × 4¼ INCHES

JIFFY KODAK SIX-20, 2¼ × 3¼ INCHES

PICTURE (ACTUAL SIZE) MADE WITH JIFFY KODAK SIX-20
AND KODAK VERICHROME FILM

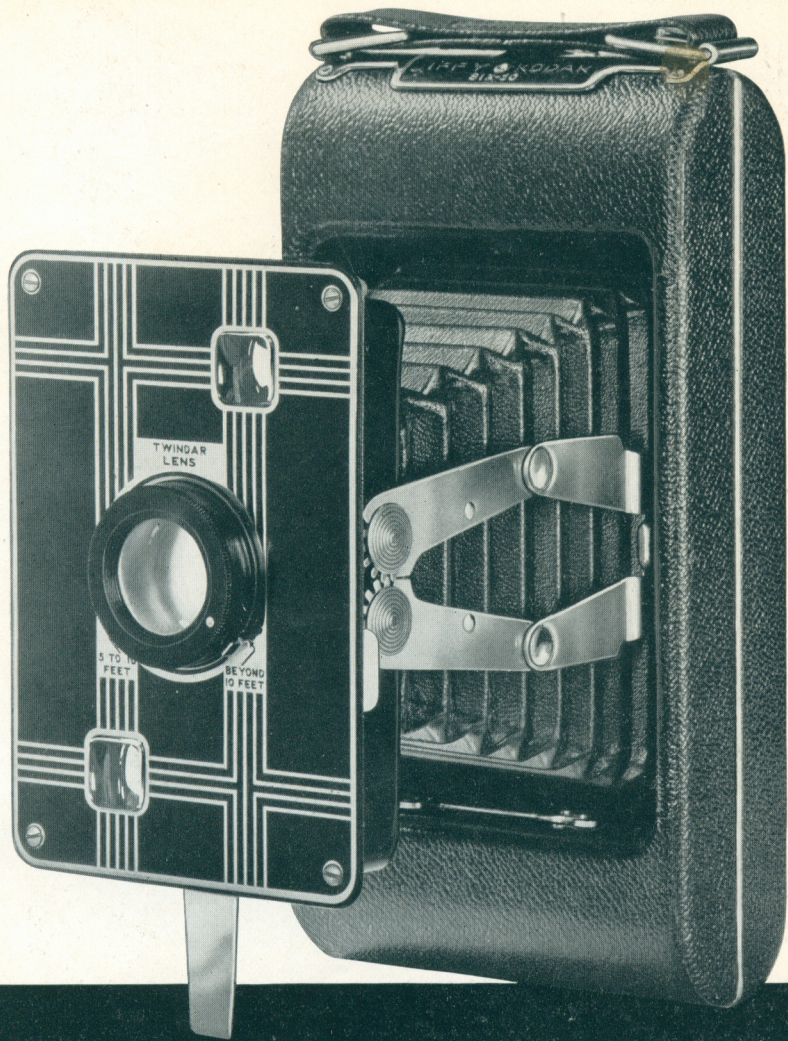


TOUCH A
BUTTON NEAR
THE BOTTOM
OF THE
CAMERA



POP—IT OPENS
—READY FOR
INSTANT
ACTION!





DETAILS Capacity: 8 exposures. Focus: adjustable, by focusing mount with near and far settings. Lens: Twindar. Shutter: built-in, with *instantaneous* and *time* actions, finger release. Two crowned brilliant finders. Swinging foot to support camera for time exposures. Finish: black morocco-grain covering; black and nickel etched metal front. Closely fitted back, instantly removable for easy loading.

PRICES

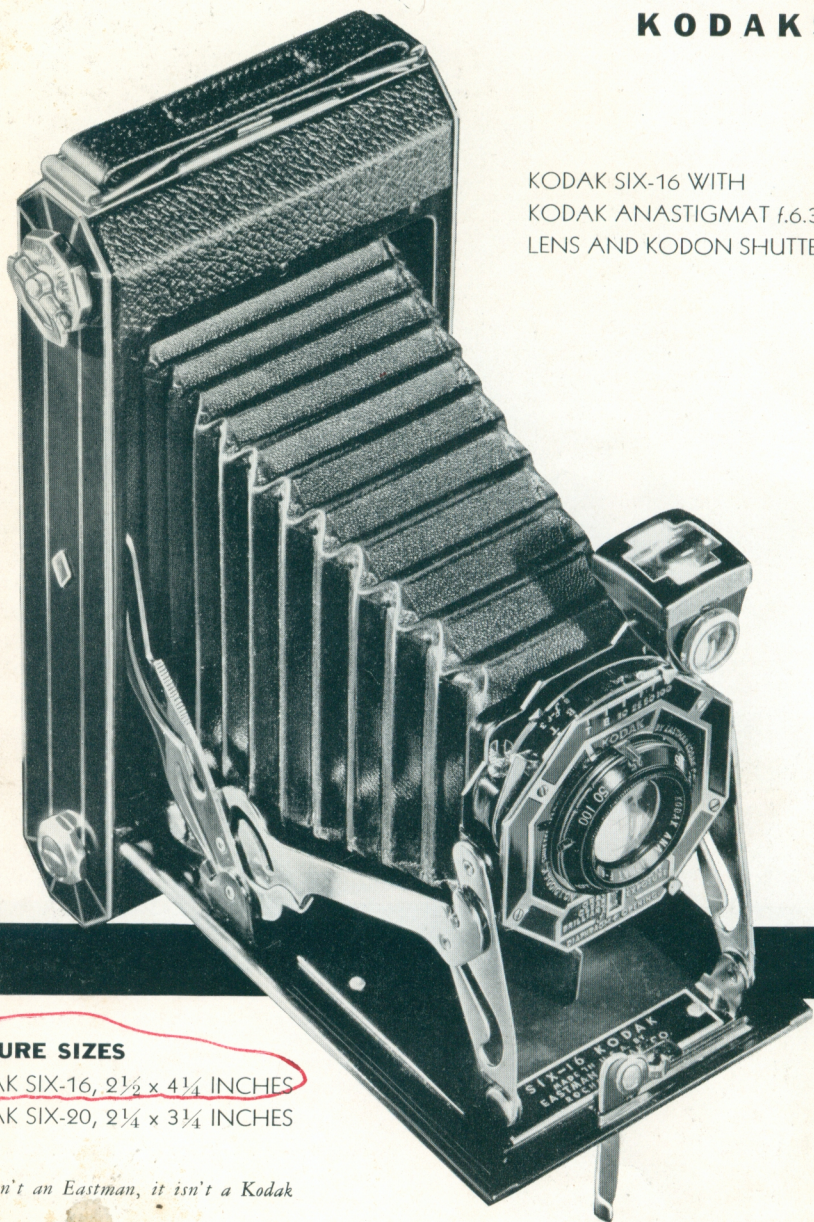
Jiffy Kodak Six-16	\$9.00
Genuine Leather Carrying Case	2.15
Jiffy Kodak Six-20	8.00
Genuine Leather Carrying Case	1.90

For Kodak Film, see pages 25 and 26

If it isn't an Eastman, it isn't a Kodak

KODAKS

KODAK SIX-16 WITH
KODAK ANASTIGMAT f.6.3
LENS AND KODON SHUTTER



PICTURE SIZES

KODAK SIX-16, 2½ x 4¼ INCHES

KODAK SIX-20, 2¼ x 3¼ INCHES

If it isn't an Eastman, it isn't a Kodak

SIX-16 AND SIX-20

HERE is the full embodiment of new-day compactness, style, and proficiency in cameras.

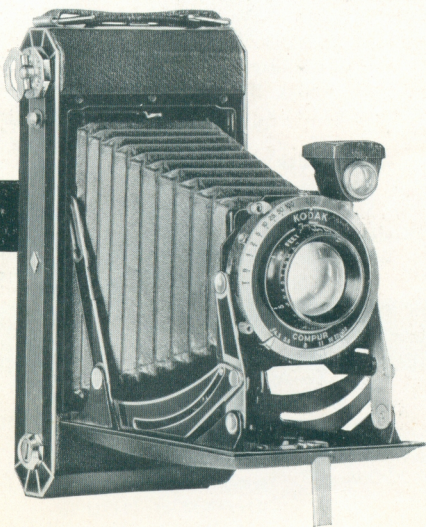
Kodaks Six-16 and Six-20 were inspired by Eastman's new, smaller, all-metal film spool. Around it Eastman engineers built the world's smallest folding camera taking ~~2 $\frac{1}{2}$ x 4 $\frac{1}{4}$ -inch pictures—Kodak Six-16.~~ For 2 $\frac{1}{4}$ x 3 $\frac{1}{4}$ -inch pictures they designed Kodak Six-20—a camera that is also amazingly compact.

A pleasing octagonal motif features the style of these ultra-modern Kodaks. Strikingly etched side panels harmonize with this scheme, and a sleek black covering sets off the whole ensemble.

With it all, however, there is greater emphasis than ever on photographic ability, smooth operation, and convenience.



PICTURE (ACTUAL SIZE) MADE WITH KODAK SIX-16 AND "SS" PAN FILM



Kodaks Six-16 and Six-20 are precision-built. They come with three different lenses, including two fast anastigmats, and with a variety of shutters—among them the famous Compur. A new spring-out front automatically opens the camera and snaps the lens into position. Two of the six models have both reflecting and direct-view finders. All load with unusual ease. Study these features on pages 6, 7.

At left: Kodak Six-16 with Kodak Anastigmat f.4.5 and Compur Shutter. This model and the Kodak Six-20, f.4.5 have lens and shutter speeds that give them extreme versatility. Rainy-day photography—snapshots indoors (even at night, with "SS" Pan Film and Photo Flood Lamps)—pictures of moving subjects—all are well within their range.

SPECIAL FEATURES OF KODAKS SIX-16 AND SIX-20

THE NEW, SMALLER SPOOL On the next page are shown the old 6-exposure wood-core spool and the smaller, all-metal, 8-exposure spool which made possible these ultra-compact Kodaks. The new spool is used in Kodak Film Nos. 616 and 620—regular, Verichrome, Super Sensitive Panchromatic, and Panatomic. (See pages 25, 26.)

LENSES Kodaks Six-16 and Six-20 can be had with any one of three lenses. The Kodak Doublet lens combines dependability with simplicity. Both cameras reach the peak of their capability in the *f.6.3* and *f.4.5* models. With them the user can regularly make negatives of the highest quality, and has reserve lens power for snapshots under varying light conditions—early or late in the day—in cloudy or rainy weather—indoors at night, with "SS" Pan Film and Photoflood lamps.

SHUTTERS Kodaks Six-16 and Six-20 with *f.4.5* lens carry the famous Compur shutter, with speeds of 1, $\frac{1}{2}$, $\frac{1}{8}$, $\frac{1}{10}$, $\frac{1}{25}$, $\frac{1}{50}$, $\frac{1}{100}$, and $\frac{1}{250}$ second. Combined with the fast Kodak Anastigmat lens, it gives these models amazing versatility, enabling them, for instance, to "stop" almost any fast action. These Compurs have a built-in self timer, which can be set to trip the shutter *automatically* when the photographer wishes to include himself in the picture.

The Diodak and Kodon shutters on the *f.6.3* and Doublet models are novel in construction. Both have secondary shutter-speed and diaphragm scales, *visible from above*. They permit setting the shutter, or making last-minute adjustments, with the camera in picture-taking position. On the Diodak, the diaphragm scale is geared to a helpful exposure guide.

THE ACTION FRONT All Six-16 and Six-20 Kodaks get into action easily and swiftly. The pressure of a button on Kodaks fitted with *f.4.5* lenses—an easy pull on the locking lever of *f.6.3* and doublet lens models, sets the front rigidly in snapshot position.

COMPARATIVE SIZE On the next page is a back-to-back comparison of an older camera

and the more compact Kodak Six-16—both taking $2\frac{1}{2} \times 4\frac{1}{4}$ pictures. Small camera size, as compared with picture size, is one of the important features of both Six-16 and Six-20.

THE DIRECT-VIEW FINDER The *f.4.5* model has not only a brilliant reflecting finder, but a collapsible *direct-view* finder. The latter permits sighting the camera at eye-level and is particularly valuable for locating moving subjects.

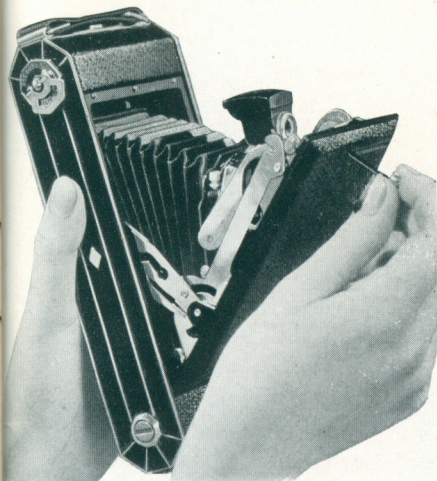
EASY LOADING Loading and unloading have been made simpler and quicker. The back is hinged, and remains attached. Spool sockets swing out into the open—there's no need to work in close quarters to insert or remove film.

OTHER DETAILS Capacity: 8 exposures. Shutter speeds: Compur (see *Shutters*, column 1); Diodak, $\frac{1}{10}$, $\frac{1}{25}$, $\frac{1}{50}$, $\frac{1}{100}$ second; Kodon, $\frac{1}{25}$, $\frac{1}{50}$, $\frac{1}{100}$ second; all with *time* and *bulb* actions, finger release. (Cable release may be added to any of these shutters if desired.) Focus: adjustable, by revolving lens mount. Finish: covering, black grained material (genuine leather on *f.4.5* models); metal parts, etched, plated, or enameled in black. Cases: pig-grain leather.

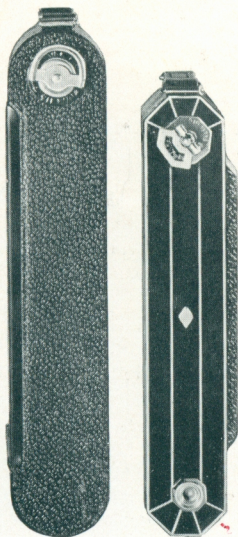
PRICES

	<i>Without Case</i>	<i>With Case</i>
Kodak Six-16		
With Kodak Doublet Lens, Kodon Shutter	\$16.00	\$19.25
With Kodak Anastigmat <i>f.6.3</i> Lens, Diodak Shutter	20.00	23.25
With Kodak Anastigmat <i>f.4.5</i> Lens, Compur Shutter	45.00	49.00
Kodak Six-20		
With Kodak Doublet Lens, Kodon Shutter	14.00	16.75
With Kodak Anastigmat <i>f.6.3</i> Lens, Kodon Shutter	17.50	20.25
With Xenar Anastigmat <i>f.4.5</i> Lens, Compur Shutter	41.00	44.50

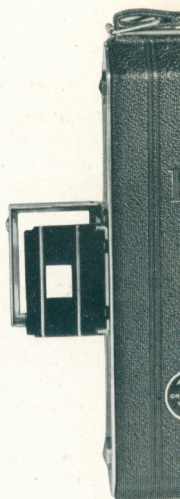
For Kodak Film, see pages 25, 26. For indoor lighting unit, see Kodaflector, page 31



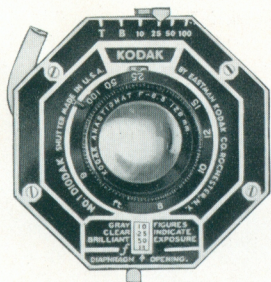
THE SELF-ERECTING FRONT ON f.6.3 AND DOUBLET LENS MODELS



AN OLDER CAMERA COMPARED WITH KODAK SIX-16

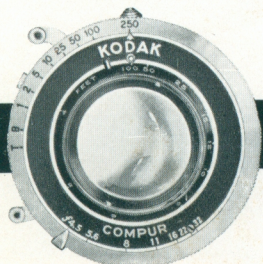
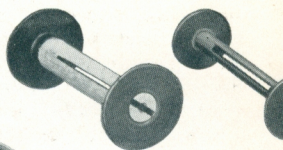


THE DIRECT-VIEW FINDER—SUPPLIED ON f.4.5 MODELS



THE DIODS SHUTTER—UNUSUAL AND ULTRA-CONVENIENT

THE OLD SPOOL—AND THE NEW, SMALLER, ALL-METAL ONE



THE FAMOUS COMPUR SHUTTER IS SUPPLIED ON THE f.4.5 MODELS

THE HINGED BACK AND SWINGING SPOOL SOCKETS SIMPLIFY LOADING



VEST POCKET KODAKS

NO cameras were ever more accurately named than these. They actually and easily slip into a vest pocket. And while such diminutive size might ordinarily mean limited ability, both of these models fully live up to every quality implied by the word *Kodak*.

Though it is no bigger than your hand, Vest Pocket Kodak, Model B, makes not merely pictures, but *good* pictures—and that means both sparkling prints and excellent enlargements whenever they are wanted. The Vest Pocket Kodak *Special*, equipped with the ultra-fast Kodak Anastigmat *f.4.5* lens, naturally has added versatility. It is fully capable of making clear pictures outdoors in cloudy or even rainy weather, and early or late in the day. Its ability to yield beautiful negatives is enhanced by the use of Kodak Panatomic or Kodak "SS" Pan Film. With the latter, plus supplementary lighting, it can be used very successfully in making indoor night-time snapshots. Both cameras are durably constructed and smartly finished, as befits genuine, full-fledged Kodaks.

PRICES

Vest Pocket Kodak, Model B, with Meniscus Lens, Vest Pocket Shutter	\$5.00
Black Levant Grain Case, with strap	1.45
Belt Carrying Case, russet leather	1.45
Vest Pocket Kodak <i>Special</i> , with Kodak Anastigmat <i>f.4.5</i> Lens, Diomatic Shutter	25.75
Black Leather Carrying Case, velvet-lined	2.30
Belt Carrying Case, russet leather, velvet-lined	2.30
Cable release for V.P.K. <i>Special</i> , opened42
Portrait Attachment for V.P.K., Model B or <i>Special</i> (see page 32)80

For Kodak Film, see pages 25, 26. For indoor lighting unit, see Kodaflector, page 31.

PICTURE AT RIGHT (ACTUAL SIZE) MADE WITH VEST POCKET KODAK SPECIAL AND KODAK SUPER SENSITIVE PANCHROMATIC FILM

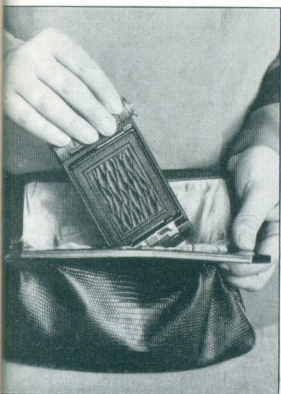


PICTURE BELOW (ACTUAL SIZE) MADE WITH VEST POCKET KODAK, MODEL B, AND KODAK VERICHROME FILM

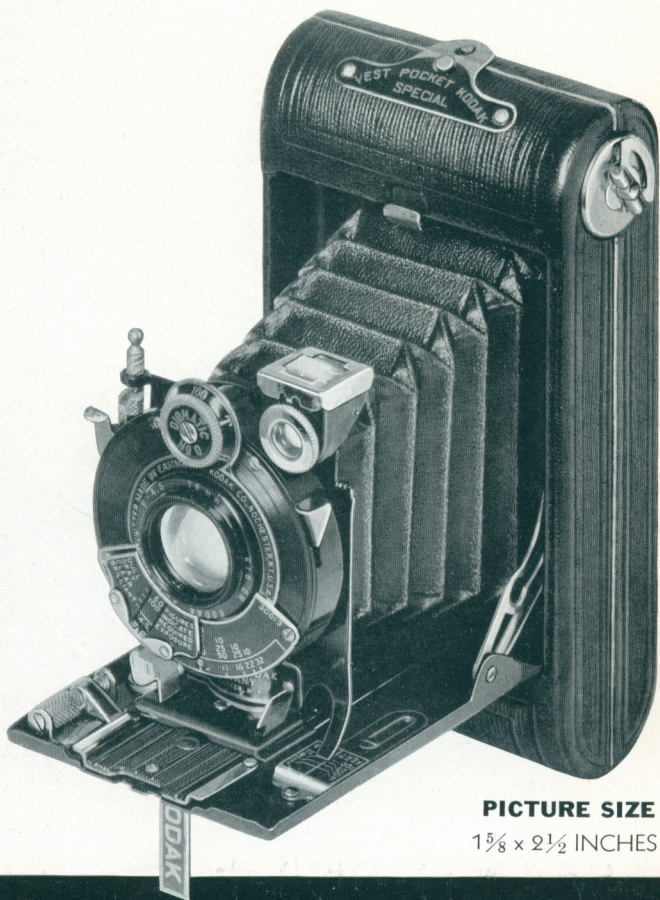




TRUE TO ITS NAME, A "V.P.K." CAN ACTUALLY BE WORN IN THE VEST POCKET



EITHER MODEL OF THE VEST POCKET KODAK CAN READILY BE SLIPPED INTO A WOMAN'S HANDBAG



PICTURE SIZE

1 5/8 x 2 1/2 INCHES

DETAILS MODEL B—Capacity: 8 exposures. Focus: fixed (no focusing necessary). Lens: Meniscus. Shutter: Vest Pocket, with four stops, *instantaneous* and *time* actions, finger release. Brilliant finder, reversible for vertical or horizontal pictures. Black bellows.

SPECIAL—Capacity: 8 exposures. Focus: adjustable, with worm-screw focusing device. Lens: Kodak Anastigmat f.4.5. Shutter: Diomatic, with speeds of 1/10, 1/25, 1/50, 1/100 second; *time* and *bulb* actions; finger release. Brilliant reversible finder. Two tripod sockets. Finish: black seal leather covering; exposed metal parts nicked and enameled. Autographic feature.

If it isn't an Eastman, it isn't a Kodak



KODAK PUPILLE

WHATEVER you see through the direct-view finder of the diminutive Kodak Pupille, you can record with the utmost sharpness and fidelity. For this miniature European-type camera is built to the highest precision standards, and provided with the finest of fittings. It has an anastigmat of *f.2* rating—a truly lightning-fast lens—mounted in a Compur shutter with speeds up to $\frac{1}{500}$ second. Consider this pair in combination with Kodak Super Sensitive Panchromatic or



Kodak Panatomic Film, and you will have some conception of the capabilities of Kodak Pupille. With it you can make snapshots indoors—at night, if you wish—or outdoors under almost any light conditions.

Here are other features of this jewel-like camera. The lens and shutter are brought into picture-taking position, not by a bellows, but by a precision spiral mount. This gives sufficient extension for pictures as close as $2\frac{1}{2}$ feet from the subject, without the use of an auxiliary lens. A detachable range finder eliminates all guesswork in focusing. Moreover, by using the built-in depth-of-focus scale, the Pupille owner can determine what objects behind and in front of the principal subject are in focus. Two color filters are supplied.

In a word, Kodak Pupille is a miniature camera replete with unusual qualities. Not the least is its low cost of operation, for it makes sixteen pictures on a roll of "vest pocket" film. These can be enlarged amazingly if the negatives are made on Kodak Panatomic Film. See inside back cover.

DETAILS Capacity: 16 exposures, $1\frac{3}{16} \times 1\frac{3}{16}$ inches, made on No. 127 Kodak Film. Lens: Schneider Xenon Anastigmat *f.2*. Shutter: Compur, 8 speeds from 1 to $\frac{1}{300}$ second, intermediate speeds up to $\frac{1}{100}$, *bulb, time*. Finder: self-erecting, direct-view. Focusing: from $2\frac{1}{2}$ feet to infinity, by focusing ring with distance markings corresponding with those on range finder. Range finder: periscopic type. Size: $3\frac{3}{4} \times 2\frac{5}{8} \times 2$ inches. Color filters: K1 and K2, for landscape work. Tripod socket for vertical position. Detachable foot for horizontal position. Covering: black morocco leather. Case: brown cowhide, velveteen lined, with hand and shoulder straps; holds camera and accessories.

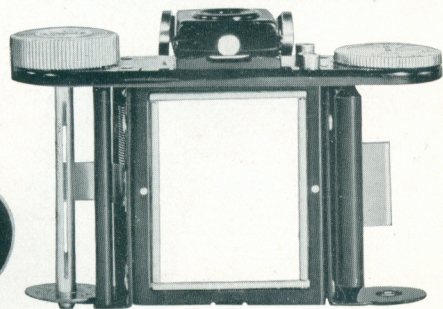
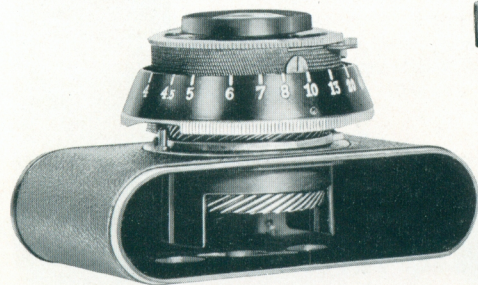
PRICES

Kodak Pupille, with Schneider Xenon *f.2* Anastigmat Lens, Compur Shutter, Carrying Case, Range Finder, 2 Color Filters. Cable Release, Camera Foot, Lens Cover \$100.00
Sunshade for Kodak Pupille lens 1.00

For Kodak Film, see pages 25, 26

For indoor lighting unit, see Kodasector, page 31

At right: Pupille with range finder in place. Below: the camera body, with spiral mount visible. Below, at right, the precise film-winding mechanism.



KODAK VOLLEND A

A LITTLE over four inches—that is the largest dimension of this European-type camera! A man can hide it under his hand. It can be carried conveniently in a vest or trouser pocket, or in a woman's handbag.

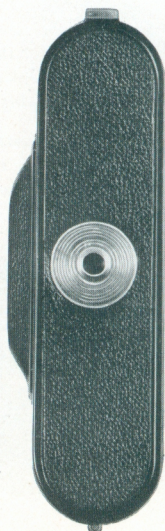
At the same time Kodak Vollenda is a highly ingenious, versatile, and reliable photographic instrument. Slight pressure on a nicked button instantly opens the camera, extends the bellows, and snaps lens and shutter into position—ready for picture-taking. Splendid results—either outdoors, or indoors with the aid of Kodak "SS" Film—are assured by both of the fast Kodak Anastigmat lenses offered, and by the precise shutters in which they are mounted. The closely fitting hinged back, the carefully coordinated film-winding mechanism, and the fine materials and workmanship throughout the camera give unsurpassed convenience and smoothness of operation. Appropriately covered with sleek pin-grain morocco leather, the little Vollenda is as big a bargain in fine miniature cameras as you will find anywhere at a comparable price.

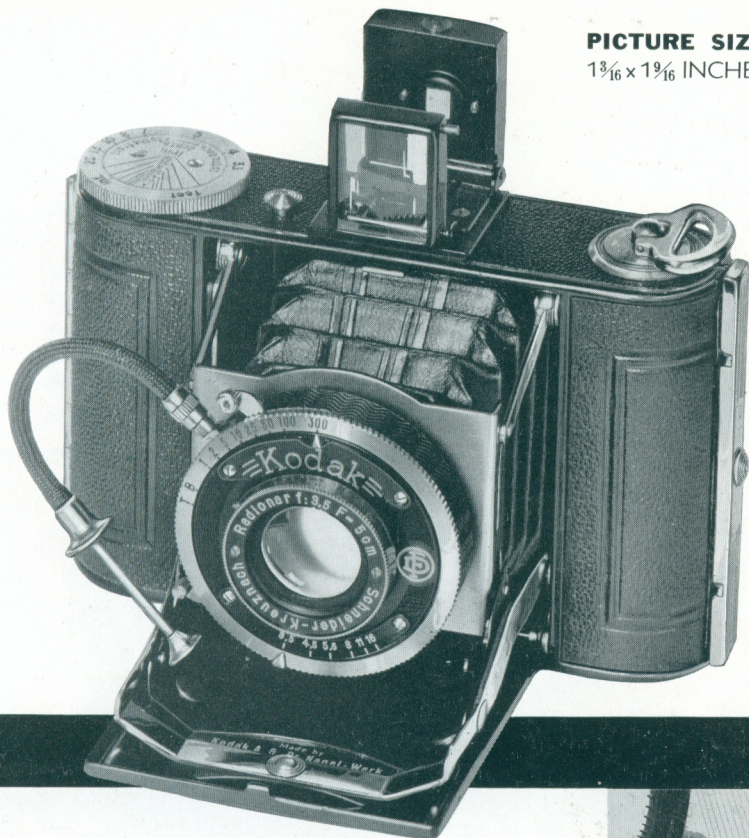
Kodak Vollenda makes sixteen pictures on a roll of "vest pocket" film, giving decidedly low operating cost. These pictures can be enlarged to surprising proportions—particularly when the negatives are made on Kodak Panatomic Film. See inside back cover.

DETAILS *Bob Models*—Capacity: 16 exposures, $1\frac{3}{16} \times 1\frac{1}{16}$ inches. Dimensions (closed): $4\frac{1}{4} \times 3\frac{3}{8} \times 1\frac{1}{4}$. Focusing: from $3\frac{1}{2}$ feet to infinity, by revolving lens mount. Bellows: black leather; extends automatically. Tripod socket: for vertical views. (For further details, see opposite page.)

THE HINGED BACK OF THE VOLLEND A IS AN AID TO QUICK, CONVENIENT LOADING. IT SWINGS OUT OF THE WAY, YET REMAINS ATTACHED AT ALL TIMES

KODAK VOLLEND A IS UNUSUALLY NEAT AND UNOBTRUSIVE WHEN CLOSED. EVEN WHEN SLIPPED INTO ITS PURSE-LIKE CASE, IT ISN'T MUCH BULKIER THAN A POCKET-BOOK



PICTURE SIZE1 $\frac{3}{16}$ x 1 $\frac{1}{16}$ INCHES

DETAILS (continued)—*F.3.5 Model*—Lens: Radionar Anastigmat *f.3.5*; 5 cm. focal length. Shutter: Rim-set Compur; 8 indicated speeds from 1 to $\frac{1}{300}$ second; intermediate speeds up to $\frac{1}{100}$; *time, bulb*; diaphragm openings from *f.3.5* to *f.16*; cable and finger release. Finder: optical eye-level direct-view type. Depth-of-focus scale: shows range of sharpness for various distances and diaphragm openings. Weight: 12 oz.

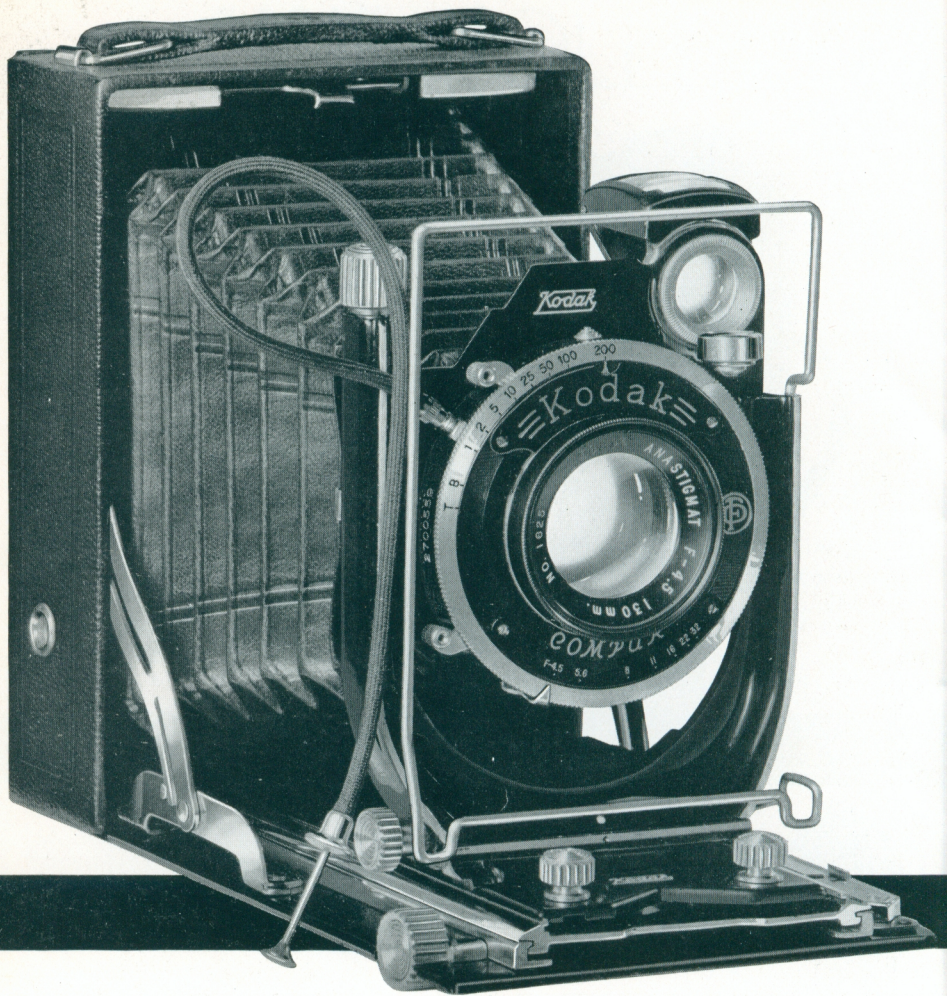
F.4.5 Model—Lens: Radionar Anastigmat *f.4.5*; 5 cm. focal length. Shutter: Pronto, with speeds of $\frac{1}{25}$, $\frac{1}{50}$, $\frac{1}{100}$ second; *time, bulb*; diaphragm openings from *f.4.5* to *f.16*; cable and finger release; built-in self timer. Finder: eye-level direct-view type. Weight: 10 $\frac{1}{2}$ oz.

PRICES

Kodak Vollenda with Radionar Anastigmat <i>f.3.5</i> Lens, Compur Shutter	\$37.00
With Radionar Anastigmat <i>f.4.5</i> Lens, Pronto Shutter	25.00
Soft Leather Case for either model	1.25

For Kodak Film, see pages 25, 26. For indoor lighting unit, see page 31.





KODAK RECOMARS 18 AND 33

THESE folding cameras of the European type combine precise construction, excellent equipment, and extreme versatility. They are built with utmost care to insure great rigidity, accuracy, and durability. They are supplied with *f*.4.5 Xenar Anastigmat lenses, Compur shutters, wire-frame direct-view finders, double-extension bellows, ground-glass focusing backs, and many other features

that bring joy to the serious picture-maker. Their supplementary lenses and adaptability to film packs, cut film, and plates fit them for almost any type of pictures, including indoor snapshots at night.

Kodak Recomars 18 and 33 are made for people who want a photographic instrument of unusual proficiency. If you are looking for such a camera, be sure to inspect the Recomars at your dealer's.



PICTURE (ACTUAL SIZE) MADE WITH KODAK RECOMAR 18 AND KODAK SUPER SENSITIVE PANCHROMATIC FILM PACK

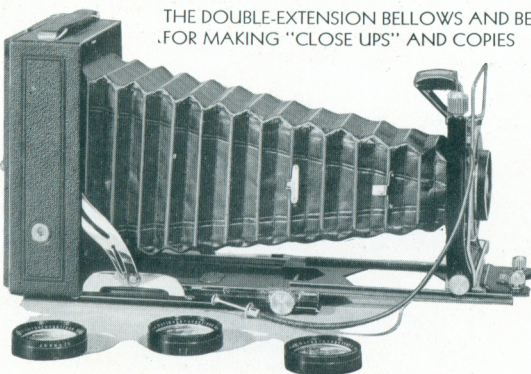
DETAILS Picture sizes and negative materials: Recomar 18—2 1/4 x 3 1/4 in. film packs, 6.5 x 9 cm. cut film or plates; Recomar 33—3 1/4 x 4 1/4 in. or 9 x 12 cm. film packs, 9 x 12 cm. cut film or plates. Lens: Kodak Anastigmat f.4.5. Shutter: rim-set Compur, with speeds up to 1/2000 second (1/500 on "18"); time, bulb, and built-in self timer; cable and finger release. Finders: wire-frame direct-view; also brilliant, reversible, reflecting type, with spirit level attached. Focusing: by micrometer screw and graduated scale, or by hooded ground-glass back. Finish: genuine black leather covering; nicked and enameled fittings. Bellows: black leather, with double extension. For negative materials, see pages 25, 26, 27. For indoor lighting unit, see Kodasector, page 31.

PRICES

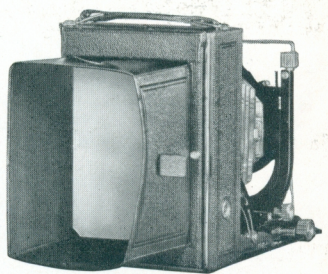
	"18"	"33"
Kodak Recomar, with Xenar Anastigmat f.4.5 Lens, Compur Shutter, 3 Combination Plate and Film Holders, Film Pack Adapter . . .	\$50.00	\$60.00
Carrying Case, brown cowhide, to hold camera, holders, adapter . . .	5.50	6.00

SUPPLEMENTARY LENSES

For large images of distant subjects	Increase in image size	Price
Lens A, for "18"	28%	\$4.00
Lens A, for "33"	33%	4.00
Lens B, for "18"	62%	4.00
Lens B, for "33"	70%	4.00
For wide angle interiors and street scenes	Increase in angle of view	
Lens D, for "18"	17%	4.00
Lens E, for "33"	23%	4.00



THE DOUBLE-EXTENSION BELLOW AND BED, FOR MAKING "CLOSE UPS" AND COPIES



THE GROUND-GLASS FOCUSING BACK ASSURES CRITICALLY SHARP FOCUS AND PLEASING COMPOSITION

PICTURE SIZES

SIX-16 BROWNIE, $2\frac{1}{2} \times 4\frac{1}{4}$

SIX-20 BROWNIE, $2\frac{1}{4} \times 3\frac{1}{4}$



SIX-16 AND SIX-20 BROWNIES

OF ALL the box cameras ever placed at the picture-maker's disposal, the Brownies have proved the most reliable, and have enjoyed by far the greatest popularity. They are outstanding favorites with both youngsters and adults, and have won for themselves literally a world-wide reputation.

The Six-16 and Six-20 models are the most proficient, most convenient Brownies yet perfected—and the best-looking, as well. Both sizes are distinctly

compact. They exhibit a style that is at once modern and dignified. And fine appearance is only one of their attractions. They have a precision feature found on no other box camera—the Diway lens. Without sacrificing any of the simplicity for which the Brownies have always been noted, this lens, controlled by a spring lever, yields sharper, clearer pictures of both near and distant subjects, increasing the picture-taking range of these models. It permits sharp pictures to be made as close to the subject as five feet, for instance. Finally, the front element of the lens protects the shutter from dust, as well as enhancing the appearance of the cameras. From whatever standpoint the Diway lens is considered, it can be counted on to increase still further the remarkable dependability which has always characterized the Brownies.

The highly crowned, extra-large finders on the Six-16 and Six-20 give a more detailed view of the subject, and make it easier to get good composition in every picture. Furthermore, they set off the rich black covering material, and harmonize with the decorative metal front. See these Brownies at your dealer's.

DETAILS Capacity: 8 exposures. Lens: Diway; regular setting for subjects beyond 10 feet, instantly changed for pictures at 5 to 10 feet. Shutter: Eastman Rotary, with *instantaneous* and *time* actions; two diaphragm settings. Finders: two brilliant Magna-finders, for vertical and horizontal positions. Finish: black morocco-grain covering; two-tone metal front plate; nicked fittings.

PRICES

Six-16 Brownie, with Diway Lens and Eastman Rotary Shutter	\$3.75
Six-20 Brownie, with Diway Lens and Eastman Rotary Shutter	3.00
Portrait Attachment for either camera (see page 32)80

For Kodak Film, see pages 25, 26

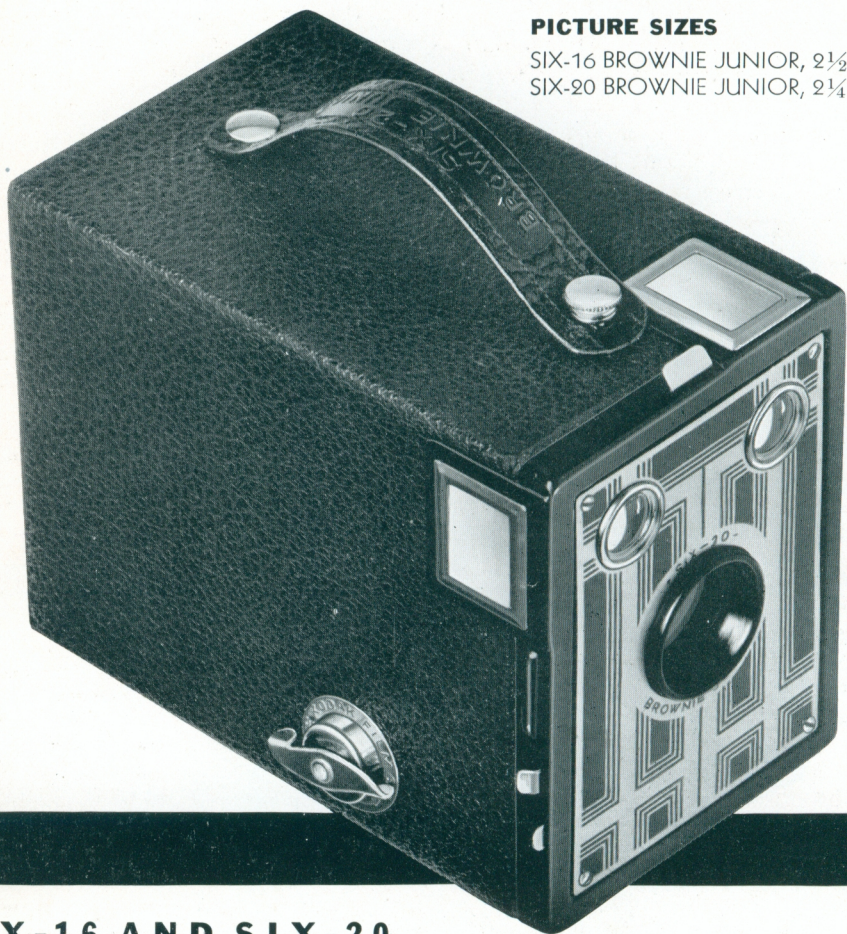


ABOVE AND AT RIGHT: ACTUAL-SIZE PICTURES MADE WITH SIX-20 AND SIX-16 BROWNIES, RESPECTIVELY, AND KODAK VERICHROME FILM

PICTURE SIZES

SIX-16 BROWNIE JUNIOR, $2\frac{1}{2} \times 4\frac{1}{4}$

SIX-20 BROWNIE JUNIOR, $2\frac{1}{4} \times 3\frac{1}{4}$



SIX-16 AND SIX-20

BROWNIE JUNIORS

LATEST additions to the line of Brownie cameras, the Juniors present themselves here for the first time in any Kodak catalogue. They offer a number of features that will most certainly appeal to thousands of people who want to make good pictures, and make them simply.

The Juniors are very economically priced. In spite of this, they exhibit typical Brownie reliability—the same dependable efficiency that gave the Brownies

their enviable reputation over a period of many years. Eastman engineering has provided a carefully ground lens, placed behind the shutter, and a protective crystal, fixed in front. A simple but smooth-working rotary shutter provides for both snapshots and time exposures. There are two large ground-glass finders, for vertical and horizontal pictures. No focusing is necessary: the focus is "fixed," the camera always ready for either near or distant views. Thus the Brownie Juniors actually reduce picture-taking to these simple terms: "Load...aim...shoot."

Cameras so easy to operate will be particularly popular among beginners. But the people who buy these new Brownies will find them attractive as well as simple. Both models are comfortably compact, and very easy to carry. They take Eastman's smaller, all-metal film spool. They are covered with neat, black, leather-like material, set off by the ornamental metal front and big finders. The final touch is added by the decorative front crystal.

These latest versions of "the simplest real camera" are real photographic news for both grown-ups and children. Ask your Kodak dealer to show them to you.

DETAILS Capacity: 8 exposures. Lens: Single Meniscus, and protective, ornamental front crystal. Shutter: Rotary, with *instantaneous* and *time* actions; two diaphragm settings. Finders: ground-glass, extra-large, for vertical and horizontal positions. Focus: fixed (no focusing necessary). Finish: black levant-grain covering; decorative metal front plate; nicked fittings.

PRICES

Six-16 Brownie Junior, with Single Meniscus Lens and Rotary Shutter	\$3.00
Six-20 Brownie Junior, with Single Meniscus Lens and Rotary Shutter	2.50
Portrait Attachment for either camera (see page 32)80

For Kodak Film, see pages 25, 26

BELOW: PICTURE (ACTUAL SIZE) MADE WITH SIX-16 BROWNIE JUNIOR AND KODAK VERICHROME FILM



ABOVE: PICTURE (ACTUAL SIZE) MADE WITH SIX-20 BROWNIE JUNIOR AND KODAK VERICHROME FILM



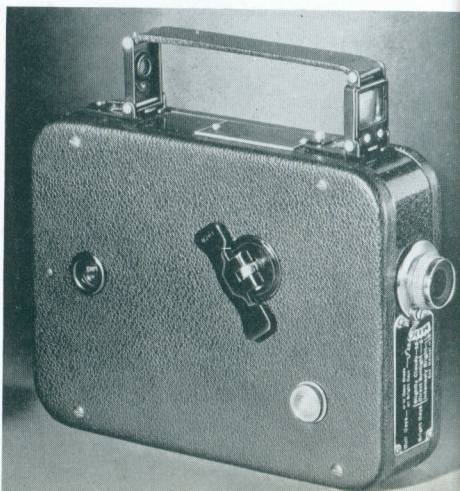


HOME MOVIES

WITH CINÉ-KODAK

THERE'S an indefinable thrill in capturing forever loved ones and friends, interesting and exciting events of today, to project in lifelike action on your living-room screen whenever you so desire. Movie-making knows no season. Indoors or out, rain or shine, you can faithfully record every important moment at home or abroad. That's the miracle of home movies made possible by Ciné-Kodak.

Why not resolve now to enjoy the matchless pleasure of movie-making? There are both 8 mm. and 16 mm. Ciné-Kodaks to fit your taste and purse. Your Ciné-Kodak dealer will be glad to advise you, or write Canadian Kodak Co., Limited, Toronto 9, Ontario.



CINÉ-KODAK EIGHT

Making movies with Ciné-Kodak Eight is actually as simple as taking snapshots. Sight the camera—press a lever—and clear, vivid movies are yours with the first roll of film. Even indoor movies are possible with the "Eight" when inexpensive Kodaflector and 35-cent Mazda Photo-flood lamps supply the illumination. This remarkable camera, which costs as little as \$39.50, makes 20 to 30 full-length movie scenes on a \$2.50 roll of film—less than 10 cents for a 10-second shot. And that's all you pay for your movies—the price of the film includes finishing at any one of Eastman's world-wide chain of processing stations.

*If it isn't an Eastman,
it isn't a Kodak*



ABOVE: DE LUXE EQUIPPED MODEL 60 OFFERS EXCEPTIONAL VERSATILITY IN 8 MM. MOVIE MAKING

DETAILS AND PRICES Ciné-Kodak Eight, Model 20, supplied with a Kodak Anastigmat $f.3.5$ lens requiring no focusing, a built-in exposure guide, eye-level finder, and an automatic footage indicator, is priced at \$39.50.

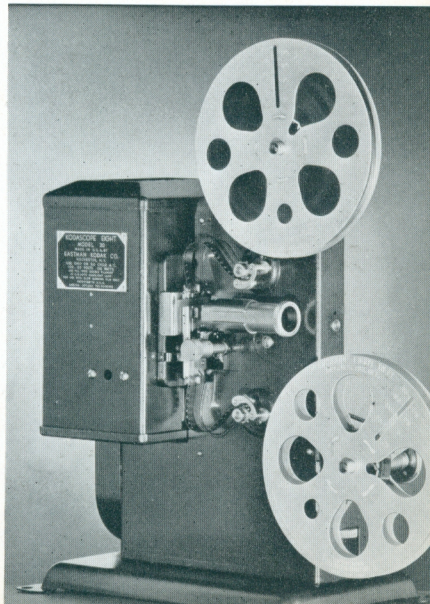
Ciné-Kodak Eight, Model 25, includes all the features of the Model 20 plus a fast $f.2.7$ lens which opens up new picture opportunities indoors and out. Price \$50.00.

Ciné-Kodak Eight, Model 60, is a focusing camera. Its precision-made Kodak Anastigmat $f.1.9$ lens is interchangeable with an $f.4.5$, $1\frac{1}{2}$ -inch telephoto lens (supplied as an extra) which makes close-ups of distant subjects. Finished in two-toned dark gray cowhide, it is priced at \$95.00, including carrying case.

Kodascope Eight, Model 25, projects generous-sized movies, is motor driven, has excellent screen brilliancy, operates on 100- to 150-volt lines, either A. C. (25-60 cycle) or D. C. . . . \$45.00.

Kodascope Eight, Model 60, a de luxe projector, produces unusually large, brilliant screen pictures, and possesses many important projection refinements such as automatic rewind, combination receptacle and switch for plugging in a room lamp and a device whereby projection may be stopped for showing a "still" picture. A heat absorbing screen prevents damage to the film during stoppage. Operates on 100- to 150-volt lines, 25 or 60 cycle A.C. or D.C. The price of this most modern projector, \$108.00, includes a sturdy carrying case.

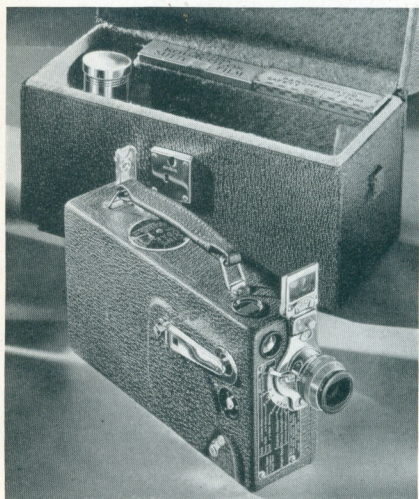
BELOW: KODASCOPE EIGHT, MODEL 25, PROJECTS CLEAR MOVIES OF AMPLE SIZE FOR HOME SHOWS



16 MM. HOME MOVIES

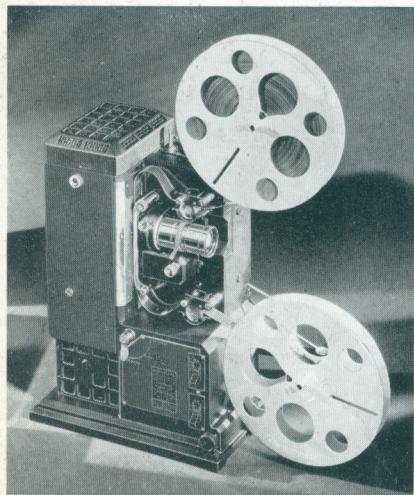
WITH CINÉ-KODAK K

**A CAMERA EASILY MASTERED
BY THE BEGINNER YET OFFER-
ING A FULL MEASURE OF MOVIE
ENJOYMENT TO THE EXPERT**



ABOVE: CINÉ-KODAK, MODEL K, IS BY FAR THE MOST POPULAR OF ALL 16 MM. HOME MOVIE CAMERAS

BELOW: KODASCOPIES K-50 AND K-75 SET NEW STANDARDS OF PROJECTION PERFORMANCE



FOR those seeking a greater versatility in their movie-making—who want to make crisp movies at any time, outdoors or indoors—who desire the greatest thrill of picture-making, movies in full-color Kodacolor—the 16 mm. Ciné-Kodak K is the logical selection.

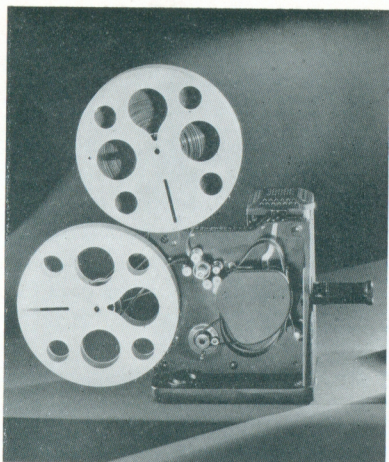
MANY UNIQUE FEATURES

No larger than an average size novel, Ciné-Kodak K is easy to carry, easy to pack. When you wind up its spring motor, set it down on any flat object, lock the exposure lever, you can walk around into the picture yourself. There's a tripod socket for use when you may desire to operate this hand-held camera from a tripod. An accurate automatic footage indicator tells you exactly how much unused film you have in the camera.

Among its other features are a built-in exposure guide, permanently attached winding crank, finger-tip focusing, half-speed device, eye-level and waist-height finders, and its ability to use any of five interchangeable lenses (supplied as extras) for telephoto and wide angle effects.

FULL-COLOR MOVIES

To make Kodacolor movies with the "K," you merely slip a Kodacolor Adjustable Filter onto the lens set at full



ABOVE: KODASCOPE, MODEL D, COMBINES LOW COST WITH BRILLIANT, EFFORTLESS PERFORMANCE

*If it isn't an Eastman,
it isn't a Kodak*

f.1.9 opening, load a 50- or 100-foot roll of Super-sensitive Kodacolor Film into the camera, and you're ready to film subjects just as you see them—in full natural color.

No wonder that Ciné-Kodak K is the most popular 16 mm. movie camera!

DETAILS AND PRICES Ciné-Kodak, Model K, finished in genuine black cowhide, with carrying case to match, is priced at \$135.00 with f.3.5 lens; \$180.00 with f.1.9 lens.

Kodascopes K-50 and K-75 represent the most modern development in 16 mm. movie projectors and share many unique projection refinements. Brilliant light sources and perfected optical systems make the "K's" unexcelled for the projection of Kodacolor movies. Model K-50 with 500-watt lamp is priced at \$215.00; Model K-75 with 750-watt lamp, \$245.00.

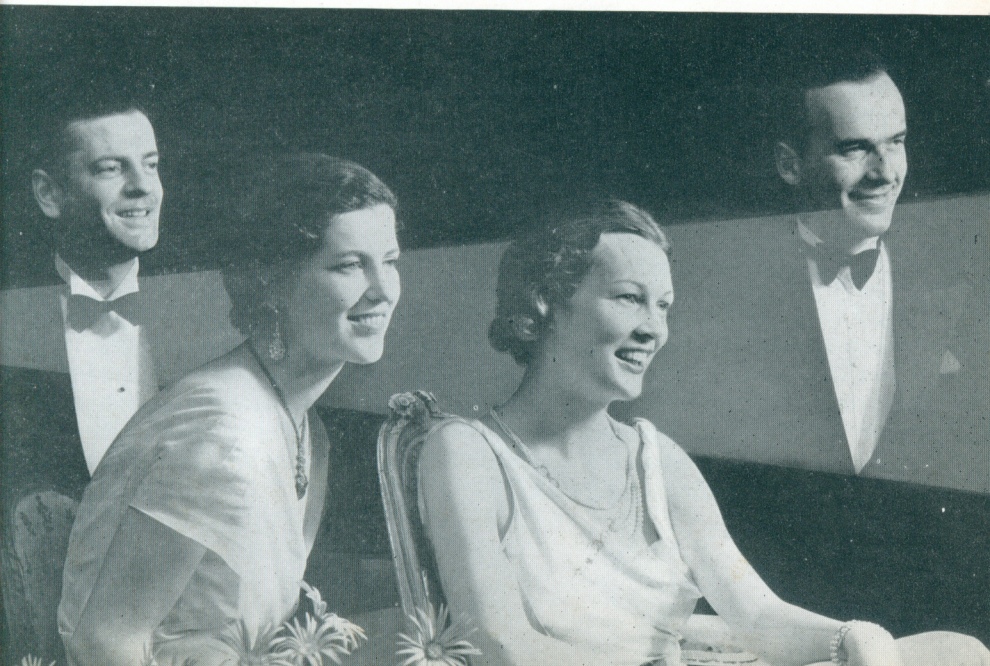
Kodascope, Model D, a remarkably efficient motor-driven projector, equipped with powerful 400-watt lamp, is priced at only \$76.00.

Ciné-Kodak Panchromatic Film is priced at \$3.75 for 50 feet; \$6.75 for 100 feet.

Ciné-Kodak Super-sensitive Panchromatic Film is priced at \$4.75 for 50 feet; \$8.50 for 100 feet.

Eastman Super-sensitive Kodacolor Film is priced at \$5.25 for 50 feet; \$10.00 for 100 feet.

All film prices include processing.



EASTMAN LENSES

KODAK and Brownie lenses are made in a number of different types, all designed to serve their particular purpose and to give full dollars-and-cents value to the camera purchaser.

The Meniscus type, though the simplest used on Eastman cameras, is carefully computed, ground, polished, and tested, and has sufficient speed for ordinary picture-taking. (The "speed" of a lens of given focal length depends upon the maximum size of the diaphragm or shutter opening at which it can be used.)

Kodak Doublet lenses are slightly faster than the meniscus type. The outer element helps to protect the shutter and adds to the appearance of the camera. Diway and Twindar lenses are of the doublet type, with a simple adjustment that insures sharp focus for both far and near subjects.

The Kodar *f.7.9* is $2\frac{1}{2}$ times as fast as the meniscus, and makes good snapshots on bright days without direct sunlight. It also has superior ability to make sharply defined and detailed pictures.

Kodak Anastigmats represent the highest type of photographic lenses. They are made in several speeds, each successive one offering greater versatility. The *f.6.3* is four times as fast as the meniscus. It makes good snapshots even in cloudy weather—or in the rain. The *f.4.5*, in its turn, is practically twice as fast as the *f.6.3*, giving correspondingly greater capability under varying picture-taking conditions. The *f.3.5* and *f.2* anastigmats supplied on some Kodaks have even more remarkable speed. The former is 60% faster than the *f.4.5*, while the *f.2* has the distinction of being fully three times as fast as the *f.3.5*. A Kodak fitted with any one of these lenses, loaded with Kodak "SS" Pan Film, and aided by inexpensive supplementary lighting (see page 31), will make snapshots indoors—even at night. All of these anastigmats yield sharp, brilliant negatives.

Naturally, anastigmat lenses, made up of a number of component parts and painstakingly corrected, cost more than the simpler types. However, they make excellent pictures possible under difficult light conditions, and at high shutter speeds. In general, each successively higher-priced Eastman lens definitely widens the range of conditions under which the camera can be successfully used.

EASTMAN SHUTTERS

ALL Kodak and Brownie shutters make both time exposures and snapshots. Each type affords speeds that correspond with the versatility of the lens to which it is geared. Some are provided with built-in exposure scales and other conveniences. The shutters vary widely in design and manufacturing cost. However, regardless of the Eastman camera you select, you can be sure that it has a shutter built for reliability and accuracy, and one that will pay for itself fully in years of satisfactory service.

KODAK VERICHROME FILM

KODAK Verichrome Film greatly increases the range of conditions under which any camera may be successfully operated. Its double emulsion—slow and fast—gives the user the results to which he is entitled, whether the light is bright or dull. It also protects him to an unprecedented degree from the results of exposure errors, and maintains a more natural color balance throughout the picture. Its backing prevents halation "fuzz." Verichrome comes in the yellow box with checkered stripes. For proper safelight to use with this film, see page 37.

KODAK SUPER SENSITIVE PANCHROMATIC FILM

THIS new Eastman film gives all users of roll-film cameras the advantages of extreme speed and complete color correction, heretofore available only in cut film and plates. While Kodak "SS" Pan is not noticeably faster than Verichrome in bright midday sun, it is 50% faster by morning and afternoon light. And by artificial light it is *three times* as fast as an ordinary film. With "SS" Pan Film, a few Photoflood lamps (see page 31), and a camera with *f.6.3* or faster lens, it is easy to make snapshots indoors—even at night. By means of short time exposures, excellent pictures can also be made indoors at night with cameras that have slower lenses.

Kodak Super Sensitive Panchromatic Film is identifiable by the green lightning flashes on the familiar yellow box. Instructions accompany each roll. For proper safelight to use with this film, see page 37.

KODAK PANATOMIC FILM

THE grain of this new Eastman film is of almost atomic fineness. This means that even when a picture made on Panatomic Film is enlarged to many times its original size, remarkable sharpness and brilliance, and much of the contact print quality, are retained. (For example of this, see inside back cover.) Users of miniature cameras like the Kodak Pupille, Kodak Vollenda, or Vest Pocket Kodak can get strikingly beautiful enlargements by making their negatives on Kodak Panatomic Film. And its fine grain is just as valuable when negatives from bigger cameras are to be greatly enlarged. Users of this film get the benefit of its minute grain without the sacrifice of other valuable qualities. Panatomic has all the speed necessary for the usual picture situation, being as fast as Regular Kodak Film in daylight, and about twice as fast in artificial light. It is also completely color-sensitive. Look for Kodak Panatomic Film in the yellow box with blue saw-tooth stripes. For proper safelight to use with this film, see page 37.

For Kodak Film prices, see next page

REGULAR KODAK FILM

REGULAR Kodak Film is available as before, with the same speed, latitude, and uniformity that made it the stand-by of millions of amateur photographers. Make it a point always to look for Kodak Film in the familiar yellow box. Only Eastman makes Kodak Film.

KODAK FILM PRICES

KODAK Film is listed below in the most commonly used sizes. For other sizes, see your dealer.

Camera Models	Picture Size	Exposures	Kodak Verichrome Film		Kodak Super Sensitive Panchromatic Film		Kodak Panatomic Film		Regular Kodak Film		Price
			Number	Price	Number	Price	Number	Price	Number		
									Non-Autographic	Auto-graphic	
All Vest Pocket Kodaks Kodaks Pupille, Vollenda; No. 0 Brownie All No. 1 or No. 2 Cameras	1 3/8 x 2 1/2	8*	V127	\$.31	SS127	\$.46	F 127	\$.46	127	A 127	\$.26
	2 1/4 x 3 1/4	6	A 120	.26
		8	V120	.31	SS120	.46	F 120	.46	12026
All Six-20 Cameras All No. 1A or No. 2A Cameras	2 1/4 x 3 1/4	8	V620	.31	SS620	.46	F 620	.46	62026
	2 1/2 x 4 1/4	6	A 116	.31
		8	V116	.36	SS116	.51	F 116	.51	11631
All Six-16 Cameras All No. 2C Cameras	2 1/2 x 4 1/4	8	V616	.36	SS616	.51	F 616	.51	61631
All No. 3 Kodaks No. 3 Brownies	2 3/8 x 4 3/8	6	V130	.56	SS130	.77	130	A 130	.46
All No. 3A Kodaks	3 1/4 x 4 1/4	6	V118	.56	SS118	.77	118	A 118	.46
	3 1/4 x 4 1/4	6	V124	.56	12446
	3 1/4 x 5 1/2	6	V122	.67	SS122	.87	122	A 122	.56
		10	V122	1.15	A 122	.92

*16 exposures, 1 3/16 x 1 9/16, when used in Kodaks Pupille or Vollenda.

KODAK FILM PACKS

KODAK Film Packs are available in three different types. They embody the same reliable emulsions found in the corresponding roll film. All Kodak Film Packs carry 12 exposures. They are easily identified by the familiar yellow box.

Picture Size in Inches	Picture Size in Centimeters	Kodak Verichrome Film Packs		Kodak Super Sensitive Panchromatic Film Packs		Regular Kodak Film Packs	
		Number	Price	Number	Price	Number	Price
1 3/4 x 2 3/8	4.5 x 6	V 500	\$.41
2 1/4 x 3 1/4	6 x 9	V 520	.62	SS 520	\$.92	520	\$.51
2 1/2 x 4 1/4	6.5 x 11	V 516	.72	516	.62
3 x 5 1/4	7.5 x 13.5	V 542	1.25
3 1/4 x 4 1/4	8 x 10.5	V 518	1.15	SS 518	1.65
3 1/4 x 5 1/2	8 x 14	V 522	1.35
3 3/4 x 5 1/2	10 x 15	V 543	1.65	SS 543	2.35
4 x 5	10 x 12.5	V 523	1.35	SS 523	1.90
5 x 7	13 x 18	V 515	2.35	SS 515	3.40
3 1/2 x 4 3/4	9 x 12	V 541	1.25	SS 541	1.80

EASTMAN CUT FILM IN AMATEUR SIZES



EASTMAN cut film offers every advantage of plates. In addition it is extremely light, free from halation, easy to handle, and unbreakable. It is one of the negative materials that make Kodak Recomars 18 and 33 so versatile, and can also be used in other similar cameras. It is available in several emulsions, listed below. All of them can be counted on for typical Eastman uniformity, and for negatives of strictly superior quality.

KODAK CUT FILM

THE speed of Regular Kodak Cut Film is comparable to that of the average portrait plate or of regular Kodak Roll Film. The *Super Speed* is half again as fast as Regular, yet it equals the latter in latitude, gradation, and fineness of grain. It yields good negatives under difficult light conditions and with short exposures.

	$2\frac{1}{4} \times 3\frac{1}{4}$	$2\frac{1}{2} \times 3\frac{1}{2}$	$3\frac{1}{4} \times 4\frac{1}{4}$	$3\frac{1}{4} \times 5\frac{1}{2}$
Kodak Cut Film, Regular, dozen . . .	\$.46	\$.46	\$.67	\$.92
Kodak Cut Film, <i>Super Speed</i> , dozen46	.46	.67	.92

Centimeter sizes supplied on special order

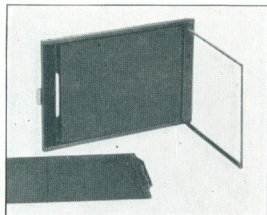
EASTMAN SUPER-SENSITIVE PANCHROMATIC FILM

THIS cut film is completely sensitive to all colors and when used with proper filters gives splendid monochrome reproductions of all tints and shades. In addition it has amazing speed, especially under Mazda lights, and opens up a new field to the serious amateur. Because of its extreme sensitivity it must be manipulated in total darkness.

Eastman Super-sensitive	$2\frac{1}{4} \times 3\frac{1}{4}$	6.5×9 cm.	$3\frac{1}{4} \times 4\frac{1}{4}$	9×12 cm.	$3\frac{1}{4} \times 5\frac{1}{2}$
Panchromatic Film, dozen . . .	\$.51	\$.56	\$.77	\$.92	\$1.05

KODAK COMBINATION PLATE AND FILM HOLDERS

THESE holders can be used in Kodak Recomars 18 and 33 or in any cameras that normally take 6.5×9 cm. or 9×12 cm. single metal plate holders. Because of their self-adjusting pressure plates, they can be loaded with either plates or cut film, and do not require cut film sheaths. The method of loading is so simple that when highly sensitive negative materials are being used the operation can readily be carried on in total darkness.



Kodak Combination Plate and Film Holders, each . . .	6.5×9 cm.	9×12 cm.
	\$.75	\$.90

Enlarged from snapshot made on Kodak Verichrome Film





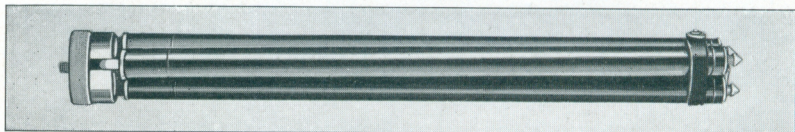
EASTMAN PLATES

THE amateur who intends to use plates in a Kodak Recomar or plate camera of any size will find it advantageous to use these well-known Eastman brands: Eastman Universal, Eastman 40, Royal Special Extra Rapid, Royal Polychrome, Wratten & Wainwright Panchromatic, Wratten Hypersensitive Panchromatic.

KODAK METAL TRIPODS

THESE tripods are models of lightness, compactness, and rigidity. They fit any standard tripod socket. The legs are of brass tubing, the sections in each telescoping neatly to give small collapsed size without sacrifice of strength. The lower sections and the heads are nickeled, while the upper sections are black.

There are three models from which to choose. When closed, their lengths range from 13½ to 15½ inches, so that even the largest is convenient to carry. Nos. 1 and 2 have revolving heads which permit the camera to swing in any desired direction without moving the tripod itself. They also have straps to hold the legs in place when closed.



DETAILS AND PRICES

	Sections	Length		Weight	Price
		Closed	Extended		
Kodak Metal Tripod No. 0	3	15 ½ inches	39 ½ inches	15 ounces.	\$3.85
Kodak Metal Tripod No. 1	4	15 inches	48 ½ inches	24 ½ ounces.	6.00
Kodak Metal Tripod No. 2	5	13 ½ inches	49 ½ inches	25 ounces.	6.50

THE KODAPOD



THE little Kodapod is an exceedingly handy arrangement, particularly suited for use in place of a tripod in outdoor photography. The toothed jaws firmly grip tree, fence, or other wooden object, while the other end threads into any standard tripodsocket. A clamping screw adjusts the camera to the correct position, where it is firmly held while the exposure is being made.

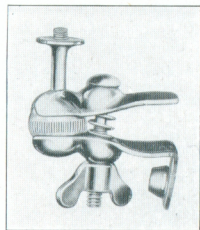
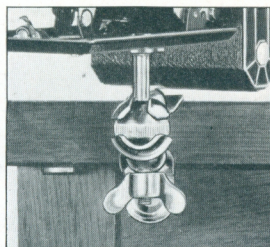


The Kodapod \$2.35

THE OPTIPOD

HERE is a neat little device—a combined tripod head and felt-lined clamp—that is frequently used instead of a tripod.

Used alone the Optipod clamps to any shelf, table, window ledge, running board or other support, and holds the camera firmly while the exposure is being made. It fits any standard tripod socket.



The ball-and-socket joint is a great convenience, since it permits tilting the camera to almost any angle. It is especially valuable when the Optipod is used with a tripod to photograph subjects so situated that it is impossible to place the tripod alone in the desired position.

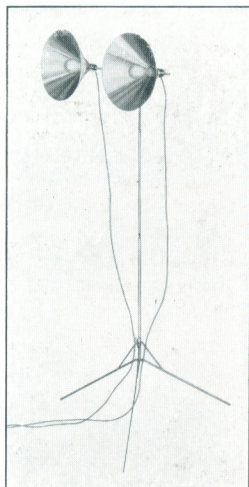
The Optipod \$1.55

THE KODAFLECTOR

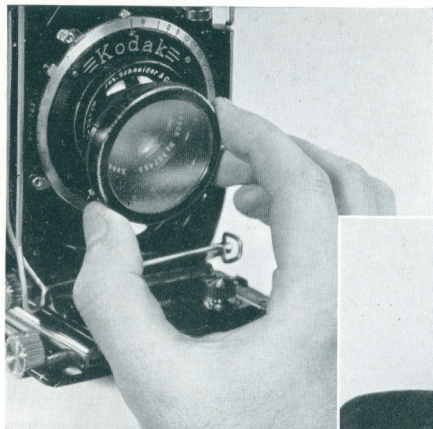
THE new Kodaflector, an extremely compact, efficient, and economical lighting unit, greatly simplifies the making of either still pictures or "movies" indoors and at night.

The outfit is designed especially for use with Mazda Photoflood lamps. The intensely bright, white light of these lamps makes them far more effective than several times their number of less powerful "yellow" lamps. Their rated life on 115-volt lines is two hours—sufficient for innumerable time exposures and snapshots, or for the exposure of hundreds of feet of Ciné-Kodak Film. For flashlights the Kodaflector may, if desired, be equipped with Mazda Photoflash lamps. These bulbs can be used for only one exposure, but they give an extremely intense light, and are suitable for use in large rooms or in photographing large groups.

The Kodaflector lights can be swung in any direction, and set at any height up to 6 feet, 4 inches. The aluminum reflectors lie flat when not in use. The stand, when folded, is only two feet long.



Kodaflector, complete with reflectors, lamp sockets, stand, and connecting cords, but without lamps	\$6.00
Mazda Photoflood Lamp35
Mazda Photoflash Lamp, No. 10 (small)15
Mazda Photoflash Lamp, No. 20 (large)25



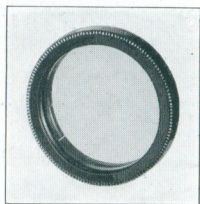
SLIP A KODAK PORTRAIT ATTACHMENT OVER YOUR CAMERA LENS:

THEN YOU'RE READY TO MAKE CLEAR-CUT CLOSE-UPS LIKE THE ONE ILLUSTRATED BELOW

KODAK PORTRAIT ATTACHMENT



✓ **W**HEN you supplement your regular Kodak or Brownie lens with a Kodak Portrait Attachment, your camera is equipped to make "close-ups" of your family and friends, as well as clear-cut, close-range pictures of flowers, art objects, and still-life subjects. It's all very easy, too. The attachment is quickly slipped over the regular lens and the camera is operated as usual. Using the Kodak Portrait Attachment simply keeps the focus sharp at close range, and results in images that almost fill the negative area.



KODAK DIFFUSION PORTRAIT ATTACHMENT



THE concentric lines polished into the surface of this attachment diffuse the light that reaches the lens. Besides giving large images like the regular Kodak Portrait Attachment, this little disk lends a charming softness—*atmosphere*—to pictures. It reduces sharp contrasts, softens chalky highlights, and blends harsh lines, so that pictures made with it take on the popular "soft focus" effect.



For prices of these attachments, see page 34.

KODAK PICTORIAL DIFFUSION DISKS



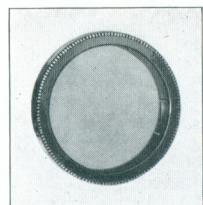
A KODAK Pictorial Diffusion Disk does for landscapes what a Kodak Diffusion Portrait Attachment does for "close-ups." The concentric and radiating lines polished into its surface lend a pleasing softness, without loss of brilliancy.

This disk slips on or off the lens mount in an instant and necessitates no change in camera operation.

The V. P. K. Diffusion Disk, used with the V. P. K. *Special*, can be used for both landscapes and portraits at $5\frac{1}{2}$ feet and beyond.



KODAK COLOR FILTER



THE Kodak Color Filter is valuable in photographing highly colored landscapes, flowers, art objects, etc. The dye in the filter holds back the strong blue and violet rays, which affect the negative most quickly, and gives the

weaker shades time to register. The resulting black-and-white picture renders all colors more nearly in the values which the eye gives them, and preserves much of the brilliancy that would otherwise be lost.



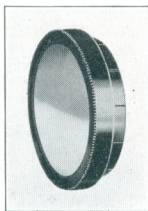
KODAK SKY FILTER



BRIGHT clouds and blue sky reflect much more light than the rest of an outdoor view. But the Kodak Sky Filter with its yellow-stained upper half holds back the light from the sky. This restrained light renders the clouds distinctly while the darker portions of the picture get the benefit of full exposure through the clear half of the attachment.

The Kodak Sky Filter slips readily over the camera lens and does not require any change in the exposure.

For prices of these attachments, see following page.



KODAK PORTRAIT AND DIFFUSION PORTRAIT ATTACHMENTS, PICTORIAL DIFFUSION DISKS, SKY AND COLOR FILTERS

(These attachments are listed here only for the cameras shown in this catalogue. They can be supplied, however, for practically all models of the Kodak and Brownie. For attachments to be used on older models, see your dealer.)

	Order by this Number	Portrait Attach- ments	Diffusion Portrait Attach- ments	Pictorial Diffusion Disks	Sky or Color Filters
FOR VEST POCKET KODAKS					
Model B, Meniscus lens	8	\$.80	\$1.30	\$.80
Special, Kodak Anastigmat f.4.5	8A	.8080
Vest Pocket Kodak Diffusion Disk (see page 33)	8A	\$1.30
FOR JIFFY KODAKS					
Six-20, Twindar lens	6A	.80	1.55	3.00	1.20
Six-16, Twindar lens	7A	.80	1.55	3.00	1.55
FOR KODAKS SIX-20					
Kodak Doublet lens	6A	.80	1.55	3.00	1.20
Kodak Anastigmat f.6.3	13	.80	1.30	2.20	1.20
FOR KODAKS SIX-16					
Kodak Doublet lens	7A	.80	1.55	3.00	1.55
Kodak Anastigmat f.6.3	13	.80	1.30	2.20	1.20
Kodak Anastigmat f.4.5	7A	.80	1.55	3.00	1.55
FOR EUROPEAN-TYPE KODAKS					
Kodak Recomar 18, Kodak Anastigmat f.4.5	5	.80	1.55	3.00	1.55
Kodak Recomar 33, Kodak Anastigmat f.4.5	16	5.95	3.40
Kodak Pupille, f.2 Anastigmat lens	5	1.55	3.00	1.55
Kodak Vollenda, f.3.5 or f.4.5 Anastigmat lens	13A	.80	1.20
FOR BROWNIES (BOX TYPE)					
Six-20 Brownie, Diway lens	7A	.80	1.55	3.00	1.55
Six-20 Brownie Junior, Meniscus lens	6A	.80	1.55	3.00	1.20
Six-16 Brownie, Diway lens	7A	.80	1.55	3.00	1.55
Six-16 Brownie Junior, Meniscus lens	7A	.80	1.55	3.00	1.55

KODAK LENS CLEANER

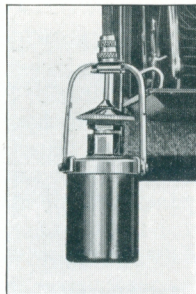


THIS product is far more than an ordinary glass cleaner. It was developed especially to remove the fungus that attacks photographic lenses in warm and humid weather, making them hazy and correspondingly inefficient. In addition it is a superior product for keeping lenses and lens attachments clean under all conditions. Its use once a month will assure a spotless lens—one that can be counted on for clear pictures.

Kodak Lens Cleaner, 1-ounce bottle \$.25

KODAK SELF TIMER

THIS accessory helps in making a really complete picture record. With it the photographer can make snapshots of himself or can include himself in group pictures. It can be used on any camera that takes a cable release. Clip a Kodak Self Timer to the cable release, set it for any interval from 1/2 second to 1 minute, and step into the picture. When the interval has elapsed, the plunger of the Timer automatically trips the shutter, making the exposure without further help from you.



Kodak Self Timer \$1.55
 Cable Release (in purchasing, specify name of camera)42

"HOW TO MAKE GOOD PICTURES"

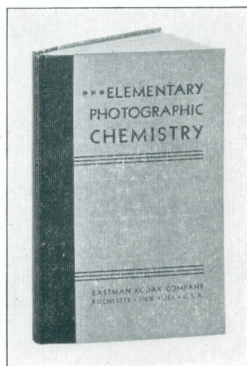


THIS well-known book should be in the home of every amateur photographer. It explains, in easy, untechnical language, the operation of cameras; developing, printing, enlarging, and coloring; landscape, architectural, interior and night photography; home portraiture; the making of silhouettes, etc. It is profusely illustrated, not only with examples of good pictures, but also with helpful charts. The book is well printed, and bound in boards, with a velum cover. It is offered in its latest, carefully revised edition.

"How to Make Good Pictures". \$.52

"ELEMENTARY PHOTOGRAPHIC CHEMISTRY"

A VALUABLE book for practical photographers. Chapter I contains a brief introduction to elementary chemistry. Subsequent chapters describe the important photographic chemicals, their properties and reactions. Important features are a table of solubilities of the chemicals in common use, practical information on formulas, the preparation and use of solutions, etc.

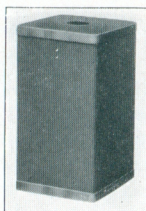


"Elementary Photographic Chemistry". \$.60

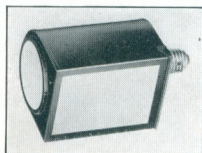
KODAK CANDLE LAMP

WHenever space is at a premium, or electricity is not available, this simple lamp can be used as a source of light in the darkroom. It is collapsible and takes up but little room when not in use. It is made of special, tested ruby fabric bound in metal frames, and gives a light safe for photographic work (except with panchromatic materials).

Kodak Candle Lamp, with one candle \$.46
 Extra Candles, per dozen51



BROWNIE SAFELIGHT LAMP



THE Brownie Safelight Lamp, but little larger than the electric bulb it holds, screws into any electric socket. It is made of japanned metal, and has safelights at the end and at the front (both Series 2, unless otherwise specified). A 10-watt bulb is the source of illumination.

Brownie Safelight Lamp, without bulb \$2.10
 Extra Circular End Safelight (any series), each31
 Extra Rectangular Safelight (any series), each52

KODAK SAFELIGHT LAMP

THIS lamp is ideal for all darkroom uses. It is made to suit the work of the beginner, the advanced amateur, or the professional. It is regularly supplied with a 5 x 7 Series 2 Safelight (for use with all films or plates except panchromatic), electric cord, and fittings. A safelight of any other series may be specified in ordering.

Kodak Safelight Lamp, without 25-watt bulb \$4.45
 Extra Safelight, 5 x 7, any series 1.05



EASTMAN SAFELIGHT LAMP

SUSPENDED from an electric cord or fixture, the Eastman Safelight Lamp throws the light directly downward over the work-table. Unless otherwise ordered, it is supplied with 5 x 7 Series 2 Safelight, for use with all films or plates, except panchromatic. The light source is a 10-watt bulb.

Eastman Safelight Lamp, without bulb \$3.60
 Extra Safelight, 5 x 7, any series 1.05

For extra Safelights for Safelight Lamps, see next page

EXTRA SAFELIGHTS FOR SAFELIGHT LAMPS

- SERIES 0—Orange, for bromide paper and lantern slide plates.
SERIES 0A—Greenish-yellow, for bromide paper, lantern slide plates.
SERIES 00—For use with developing-out papers (except bromide).
SERIES 1—For use with films or plates not highly color sensitive.
SERIES 2—For use with Kodak Verichrome Film and other extra-rapid orthochromatic films and plates.
SERIES 3—For use with Kodak Super Sensitive Panchromatic Film, Kodak Panatomic Film, and other red-sensitive panchromatic films and plates.

Price, any series, for Eastman and Kodak Safelight Lamps—\$1.05;
for Brownie Safelight Lamp, circular—\$.31; rectangular—\$.52.

Safelight for Kodak Super Sensitive Panchromatic and Kodak Panatomic Films—Because of the extreme sensitivity of Kodak Super Sensitive Panchromatic Film and Film Packs, and the panchromatic qualities of Kodak Panatomic Film, finishing of these materials must proceed in total darkness until the film has been in the developer not less than three minutes. It may then be examined under a Kodak, Eastman, or Brownie Safelight Lamp, fitted with Series 3 (dark green) Safelight and 10-watt bulb. The lamp must be six feet or more from the film.

DEVELOPING AND PRINTING OUTFIT

THE camerist who wishes to do his own developing by the tray method, and to make his own prints, can save himself both time and expense by using this Eastman 3A Outfit, which includes all requisites for finishing twenty-four pictures $3\frac{1}{2} \times 5\frac{1}{2}$ inches or smaller. Being assembled in large numbers it can be offered at a price that spells economy for the user. Good results are assured by the fact that each item is a tried and tested member of the Eastman line. Each outfit complete as follows:

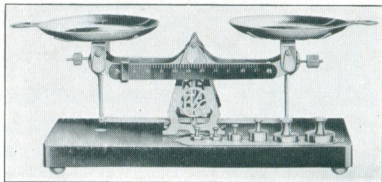


One Kodak Candle Lamp, one Printing Frame and Glass, one 4-ounce Graduate, one Stirring Rod, four Developing Trays, six Eastman Special Developer Powders, one-half pound Kodak Acid Fixing Powder, two dozen $3\frac{1}{4} \times 5\frac{1}{2}$ -inch Velox Paper, two ounces Nepera Solution for developing Velox and one instruction book.

EASTMAN 3A OUTFIT, COMPLETE Price \$2.75

EASTMAN STUDIO SCALES

THE precise weighing of chemicals is as important as their strength, if formulas are to be compounded with accuracy. The Eastman Studio Scales provide an ideal instrument for all photographers who mix their own chemicals. They are made of finest nickel-steel and are mounted on a mahogany-finished base, 9 inches long. They are supplied with weights and markings in either the avoirdupois or metric system. A graduated beam provides for minor weights. Larger quantities are weighed by means of accurately turned metal pan weights, which rest in depressions in the wooden base when not in use.



Eastman Studio Scales, Avoirdupois or Metric \$6.65

KODAK FILM TANK

THIS outfit affords the easiest, most reliable means of developing roll film negatives.

No darkroom is required; the whole process of developing can be done in daylight. By means of the light-tight box the film is transferred to a reel, being covered at the same time by a protecting apron. Reel, film, and apron are then immersed in the solution cup, and development is made according to directions.



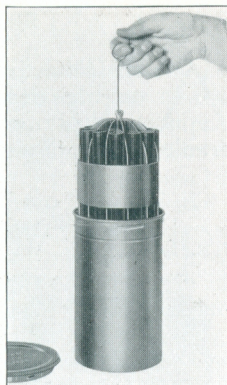
The Kodak Film Tank lends itself ideally to the development of Kodak Super Sensitive Panchromatic and Kodak Panatomic Films. Because of the extreme sensitivity of these materials, they must, after exposure, be handled in total darkness until they have been in the developer at least three minutes. (See instructions packed with each roll of film.) The Kodak Film Tank is the surest device for the amateur's use in developing these outstanding new films.

- 2¼-inch Kodak Film Tank, for films 2¼ inches wide or less \$5.75
- 2½-inch Kodak Film Tank, for films 2½ inches wide or less 7.50
- 3½-inch Kodak Film Tank, for films 3½ inches wide or less 8.75
- Kodak Tank Developer Powders, for 2¼-inch, 2½-inch or 3½-inch Tank,
per ½ dozen40
- Kodak Acid Fixing Powder, per ½-lb., or 1-lb. package \$.16, \$.26

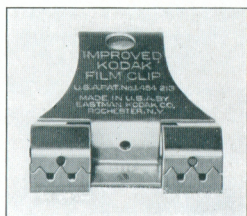
KODAK FILM PACK TANK

A CONVENIENT and inexpensive outfit for the developing of film-pack films. Exposed films are bent double and slid into separate compartments of the metal cage provided. The loaded cage is then lowered into the tank, in which a developing solution has been previously prepared. Development proceeds in accordance with simple directions.

The Kodak Film Pack Tank can be used for developing any type of film pack. It must, however, be loaded in a darkroom. Kodak Super Sensitive Panchromatic Film Pack negatives must be handled in total darkness until they have been in the developer at least three minutes.



No. 1 Kodak Film Pack Tank, for twelve $1\frac{3}{4} \times 2\frac{3}{8}$ or $2\frac{1}{4} \times 3\frac{1}{4}$ films	\$1.80
No. 2 Kodak Film Pack Tank, for twelve $2\frac{1}{2} \times 4\frac{1}{4}$, $3\frac{1}{4} \times 4\frac{1}{4}$, $3 \times 5\frac{1}{4}$, $3\frac{1}{4} \times 5\frac{1}{2}$, 4 x 5, or 9 x 12 (cm.) films	3.60
No. 3 Kodak Film Pack Tank, for six 5 x 7 films	4.10
No. 1 Kodak Film Pack Tank Developer Powders (package of 6 pairs)	.45
No. 2 Kodak Film Pack Tank Developer Powders (package of 6 pairs)	.55
No. 3 Kodak Film Pack Tank Developer Powders (package of 6 pairs)	.75
Kodak Acid Fixing Powder, per $\frac{1}{2}$ -lb., or 1-lb. package	\$.16, \$.26



IMPROVED KODAK FILM CLIP

MADE in two styles. One is used in suspending the film from a support. The other can be attached to the lower edge of the film, a lead weight keeping the film taut. Both styles have 2-inch jaws, and drainage holes.

Improved Kodak Film Clip, without lead weight	\$.45
Improved Kodak Film Clip, with lead weight	.55

KODAK JUNIOR FILM CLIP

TWO teeth in the jaw of this clip remove all possibility of slipping. The clip is made in one size only, $1\frac{3}{16}$ inches wide, of stainless steel, and is equally practical for tray development or for drying films.

Kodak Junior Film Clip	\$.16
------------------------	-------



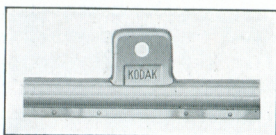
DEVELOPING TRAYS

Papier Mache		Maple Leaf Enameled	
4 x 6 . . . \$.30	$6\frac{1}{2} \times 8\frac{1}{2}$. . . \$.75	4 x 6 . . . \$.65	
5 x 750	8 x 10 . . . 1.00	5 x 790	

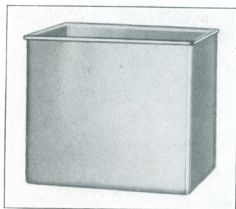
EASTMAN FILM DEVELOPING CLIP

A STRONG, convenient, and thoroughly dependable slip, durably finished in nickel. Suitable for tray development or for drying films.

3½-inch, per pair \$.40



KODAK DEVELOPING BOX, No. 1

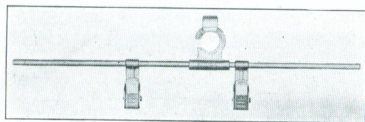


THIS tank provides a swift and easy means to uniform development of cut film. It takes twelve films, each suspended in the solution from a Kodak Cut Film Developing Hanger. Development proceeds by the time and temperature method. The tank is made of acid-resisting metal and measures 4⁵/₈ x 5¹/₄ x 6 inches.

Kodak Developing Box, No. 1, without hangers . . \$3.25

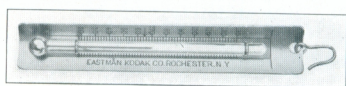
KODAK CUT FILM DEVELOPING HANGER

FOR use with Kodak Developing Box, No. 1. The hanger is made sufficiently long to lie conveniently across the top of the box. The clips are made of an acid-resisting metal.



Kodak Cut Film Developing Hangers, each \$.36

EASTMAN THERMOMETER



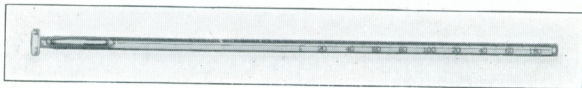
AN accurate instrument, especially convenient in tank or tray development. The swinging hook which is provided makes it easy to suspend the

thermometer in solutions. Its curved back protects the glass tube and fits the corner of a developing tank.

Eastman Thermometer \$.92

THERMOMETER STIRRING ROD

THIS rod can be used to record the temperature of solutions, mix ingredients, and, because of its blunt end, to crush lumpy powders.



Thermometer Stirring Rod \$1.30

KODAK AMATEUR PRINTER



FOR quick and convenient contact printing the amateur can choose no better means than this compact device, built simply but to Eastman scientific standards.

It fits negatives from $1\frac{5}{8} \times 2\frac{1}{2}$ to 4×5 or $3\frac{1}{4} \times 5\frac{1}{2}$ inches. The negative to be printed is placed on the top glass window by the light of a red bulb inside the printer. A simple masking arrangement controls the white margins and holds the negative during any number of exposures. The paper is placed over the negative and the hinged frame closed. This automatically turns on a 60-watt electric lamp (not supplied) and makes the exposure. The position of this lamp is readily adjustable to give even illumination to negatives of various sizes.

The printer is supplied with $5\frac{1}{2}$ feet of electric cord with plug attached, and one red bulb. By simply inserting an ordinary 60-watt lamp the printer is made ready for instant use.

Thousands of amateurs can attest to the convenience and efficiency of this inexpensive printer. See it at your Kodak dealer's.

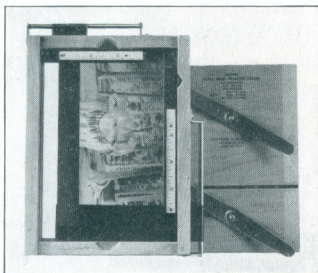
Kodak Amateur Printer \$12.50

KODAK AUTO-MASK PRINTING FRAME

THIS frame can be used in printing from any negatives of amateur size: 4×5 , $3\frac{1}{4} \times 5\frac{1}{2}$ inches, or smaller.

Attached to the frame are two slides adjusted from the outside, forming an accurate mask of whatever size is desired. Any number of uniformly masked prints can be made without readjusting the negative or the masking slides.

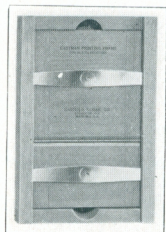
The entire frame is carefully constructed, of quality material, to give years of service.



Kodak Auto-Mask Printing Frame \$1.55

EASTMAN PRINTING FRAMES

THESE frames have a two-section hinged back, with clamps to hold the negative and paper firmly. Construction is of beech, a high-grade wood that assures rigidity and long life, and obviates danger of warping. Eastman Printing Frames are supplied without glass.



A worthwhile feature lies in the type of hinge used. All metal, and running the full width of the back, it imparts strength and rigidity at a point which receives much hard wear.

For 3¼ x 4¼-inch plates and 2¼ x 3¼-inch or smaller film negatives	\$.85
For 3¼ x 5½-inch or smaller film negatives	.85
For 3¼ x 5½-inch plates	.85
For 4 x 5-inch plates or films	.85
For 5 x 7-inch plates or films	.95

VELOX PAPER

"LOOK FOR VELOX ON THE BACK"

VELOX is a non-abrasion developing-out paper ideal for amateur work. It takes into account the fact that amateur pictures are made under greatly varying light conditions, its several degrees of contrast fitting every type of amateur exposure. If the negative is at all printable, some one of these degrees will give the proper and most pleasing rendering of highlights and shadows. Velox is also supplied in two surfaces, giving the amateur a choice in the matter of finish.



VELOX PRINTS ARE IDENTIFIABLE BY THE NAME "VELOX" TINTED LIGHTLY ON THE BACK

GRADE	SURFACE	CONTRAST		
Velvet Velox	Semi-Gloss	2	3	4
Glossy Velox	Enameled	1	2	3 4

SIZE IN INCHES	PRICES	
	2 Dozen	1 Gross
1 7/8 x 2 3/4 (for 1 5/8 x 2 1/2 negatives)	\$.26	\$.87
2 1/4 x 3 1/2 (for 2 1/4 x 3 1/4 negatives)	.36	1.25
2 3/4 x 4 1/2 (for 2 3/2 x 4 1/4 negatives)	.36	1.55
3 1/2 x 4 1/2 (for 3 1/4 x 4 1/4 negatives)	.42	1.90
3 1/8 x 5 3/8 (for 2 7/8 x 4 5/8 negatives)	.42	2.00
3 1/2 x 5 1/4 (for 3 1/4 x 5 1/2 negatives)	.52	2.45

Velox is also available in exact negative sizes (except Vest Pocket)

EASTMAN ENLARGING PAPERS

THESE bromide enlarging papers give unsurpassed quality, offer a wide variety of effects, and are just as easy to use as Velox.

Eastman Bromide paper is particularly adapted to enlargements from portrait negatives. It is also ideal for enlarging pictures of landscapes and interiors, when it is desired to produce prints that are brilliant but that have a long scale of tones rather than strong contrasts. Surfaces: Standard B, Smooth, Semi-Matte; Matte-Enamel, Smooth, Absolute Matte.

P. M. C. Bromide is a paper of excellent all-around quality. It is supplied in ten different grades, some of them single weight and others double weight. There is a variety of stocks and surfaces, and some of the grades are made in three degrees of contrast. P. M. C. can, therefore, be counted on to suit every taste and requirement.

KODAK AUTO-FOCUS ENLARGER, MODEL B



THIS new-model enlarger supplies the easiest and most efficient means of making amateur enlargements. It can be clamped to any table, and is notable for the fact that it focuses itself. As the projector is moved up or down to form an image of the desired size, a cam-and-lever arrangement keeps the focus at critical sharpness. Enlarging with this device is therefore as rapid and easy as contact printing. And the Kodak Anastigmat lens supplied assures big prints of finest possible quality. The outfit includes a new type of all-metal paper holder, with clamps for holding the paper, and a felt-covered bottom. The negative holder has an opening 4 x 6 inches, and is adaptable to film or plate

negatives. They can be enlarged from $1\frac{1}{2}$ to $3\frac{1}{2}$ diameters. Prints approximately $11 \times 18\frac{1}{2}$ inches can be made from a $3\frac{1}{4} \times 5\frac{1}{2}$ negative; and prints $5\frac{1}{4} \times 8\frac{1}{4}$ inches can be made from a "vest pocket" negative.

The ventilated lamp house holds a Mazda Photoflood lamp. Built-in switches permit using the light in either of two degrees of intensity.

Kodak Auto-Focus Enlarger, Model B, with Kodak Anastigmat Lens, electric cord and plug, Photoflood lamp, set of seven flexible metal masks, paper holder . . .	\$50.00
Paper Holder only (for use, if desired, with old-style enlargers)	9.00
Diffusing Disc for soft-focus effects	1.05
Adapter, 100-125 volts, to permit use of Photoflood lamp in old-style Kodak Auto-Focus Enlarger	10.00

KODAK HOME ENLARGER



THIS is a simple enlarger offered for the picture-taker's own use, and is particularly adapted to the beginner. It takes negatives from half-vest pocket size up to and including $3\frac{1}{4} \times 4\frac{1}{4}$ -inch and 9×12 -centimeter. A $3\frac{1}{4} \times 5\frac{1}{2}$ -inch negative will fit in the holder but only $4\frac{1}{2}$ inches of its length can be enlarged. Enlargements up to 11×14 inches can be made; up to 5×7 from half-vest pocket nega-

tives, and proportionate enlargements from larger-sized negatives. Exact-size prints by projection also can be made.

The easel measures $11\frac{1}{2} \times 14\frac{1}{2}$ inches and has metal clips to hold the paper. Because of the speed, variety of surfaces, and degrees of contrast afforded by P.M.C. Bromide, this paper is recommended for use with the Kodak Home Enlarger. (See page 44).

The lens is a Kodar, 98 mm., assuring good definition and even illumination of the entire field. An ordinary 60-watt lamp is used. The projector and its stand move in a groove to adjust the image to the desired enlargement size. Moving the lens support in a second groove gives sharp focus. Thorough instructions are included with each outfit.

Kodak Home Enlarger, with Kodar 98 mm. Lens, Negative Holder, Paper Holder
(but without 60-watt lamp) \$20.00

VELOX WATER COLOR OUTFIT

PHOTOGRAPHIC prints, lantern slides, and even ordinary magazine pictures can be colored easily, artistically, by using Velox Water Colors. The outfit consists of three brushes and a booklet containing complete instructions as well as twelve leaves of different colors. Each leaf is divided into twenty-six detachable, soluble color stamps. The inside cover of the case serves as a mixing palette.



Velox Water Color Outfit (book of color stamps, three brushes, case) \$1.25
 Velox Transparent Water Color Stamps, complete book of 12 colors51
 Color Leaves, (2 sheets)10
 Set of three Special Brushes51

KODAK TRANSPARENT OIL COLOR OUTFIT



THESE perfected oil colors offer a splendid means of coloring photographs. The pigments used are of the highest quality and are ground extremely fine in order to give complete smoothness when applied. They contain no element that might bleach or otherwise affect photographic prints. There are fifteen standard colors, which, when mixed according to the Kodak Oil Color Mixing Chart, will produce almost any tint or shade that might be desired. They have strength, brilliance, and permanence equal to the standards of recognized authorities

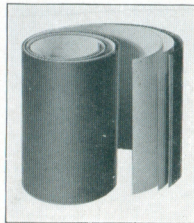
for artists' oil colors. The complete outfit also includes sizing fluid, cleaning fluid for margins, transparent medium for thinning, a quantity of stump cotton, pointed sticks (skewers), and an instruction book.

Kodak Transparent Oil Color Outfit (complete, in decorative lacquered box) . . .	\$4.50
Set of Tubes of Oil Colors only, with Instruction Book	3.50
Transparent Thinning Medium, per tube40
Sizing Fluid, per 1-oz. bottle25
Cleaning Fluid, per 1-oz. bottle25
Stump Cotton, per package20
Skewers, per dozen25

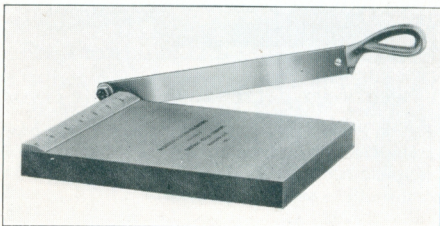
KODAK PHOTO BLOTTER ROLL

AN efficient and ingenious device for drying velvet and matte-surfaced prints or enlargements. One of the two rolls of white blotting paper included has a linen lining, against which the emulsion side of the prints is placed. A strip of corrugated board helps to circulate air through the roll. Dimensions, 11½ inches by 6 feet. Capacity, about 60 prints.

Kodak Photo Blotter Roll \$1.75



KODAK TRIMMING BOARDS



STAINCHLY constructed, in sizes suited to the amateur photographer's needs. The boards are of hard wood, the blades of fine quality steel, and the rules are plainly marked.

No. 1, capacity 5 x 5 inches . . \$1.10
No. 2, capacity 7 x 7 inches . . 1.35

KODAK DRY MOUNTING TISSUE



THIS tissue offers one of the most satisfactory methods of mounting prints. Just fix the tissue on the print, lay both on the mount, and press with a warm flat-iron. The heat causes the tissue to fuse, giving perfect contact between print and mount at every point.

3 dozen sheets for prints up to $3\frac{1}{4} \times 4\frac{1}{4}$ \$.16
 2 dozen sheets for $3\frac{1}{4} \times 5\frac{1}{2}$ prints16

KODAK PHOTO PASTE

AN excellent white adhesive. It is made especially for mounting prints, and will not bleach or discolor them. A valuable paste for general purposes.

2-ounce tube \$.16



KODAK LIQUID GLUE

A PHOTOGRAPHIC glue that will not discolor pictures. It provides the quickest method of mounting prints.

Per tube \$.21

FLEXO PRINT ROLLER

THIS small and inexpensive roller, long a favorite with the amateur, has a four-inch rubber roll, supported in a black enamel frame.

Flexo Print Roller \$.36



KODAK PRINT ROLLER

A HIGHLY convenient aid in mounting. The frame is nicked and the rubber rolls are six inches long. Pressure is easily exerted by means of the overhead handle.

Kodak Print Roller \$2.00

MISCELLANEOUS SUPPLIES

Ferrotypes Plates, Special (for making glossy prints), 10 x 14, light	\$.26	Spotting Colors, Eastman (consist of three colors—black, white, and sepia), per set	\$.41
Ditto, 10 x 14, heavy36	Squeegee, Eastman Special, 8-inch (for use with ferrotypes plates)	1.50
Opaque, Eastman, No. 1 (for blocking out unwanted parts of negatives), per tube30	Stirring Rod, Hard Rubber (acid- and chemical-proof)36
Rubber Focusing Cloth, per yard	1.05		

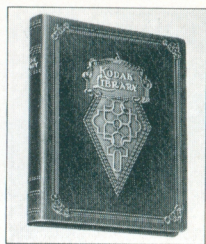
LIBRARY ALBUM

THIS style fills the demand for an album in book form, readily placed in the bookcase when not wanted. The words "Kodak Library" are stamped in gold on the rounded back.

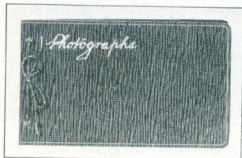
The cover is made of de luxe artificial leather. It is ornamented with an exclusive book design and artistic coloring.

The loose-leaf arrangement for holding the fifty black leaves is inside the cover—therefore, there are no projections to mar table or desk on which album may be placed.

6½ x 9 (size of leaf from folding edge) \$3.00 Package of 12 extra leaves \$26



BALMORAL ALBUM



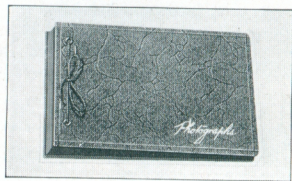
LOOSE-LEAF, open back style, with cover of genuine crepe leather. The word "Photographs" stamped in gold. 50 black leaves, held in place by metal tubes and silk finished cord through cover. A quality album which must be seen to be appreciated.

A, 5 x 8 \$2.50 B, 7 x 11 \$3.50 C, 10 x 12 \$5.00.
Package 12 extra leaves: Size A, (5 x 8), \$.19; Size B, (7 x 11), \$.26;
Size C, (10 x 12), \$.36

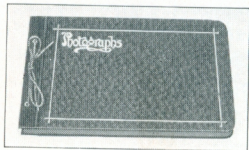
MELITA ALBUM

THE flexible cover of this album is made of genuine black twig grain leather. "Photographs" is stamped in gold. Loose-leaf, open back style, with 50 black leaves. A conservatively styled and modestly priced album that is sure to please.

B, 7 x 11 \$2.25 Package of 12 extra leaves \$26



WESTMINSTER ALBUM



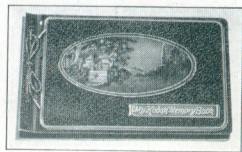
LOOSE-LEAF, open back style, crash finish imitation leather cover with embossed marginal design and "Photographs" stamped in gold. Fifty black, round-cornered leaves.

A, 5 x 8 \$1.50 B, 7 x 11 \$2.00 C, 10 x 12 \$3.25
K, 8 x 10 \$2.50 E, 11 x 4 \$4.00
Package of 12 extra leaves: Size A (5 x 8), \$.19; Size B (7 x 11), \$.26;
Size C (10 x 12), \$.36; Size K (8 x 10), \$.26; Size E (11 x 14), \$.52

MY KODAK MEMORY BOOK

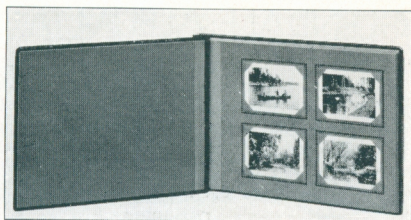
IN addition to its embossed, hand-colored cover design, this attractive book has the words "My Kodak Memory Book" embossed in a raised panel. It is unusually handsome and well deserves the pictures you prize the most. Loose-leaf, open back style, with 50 black leaves.

B, 7 x 11 \$3.35 Package of 12 extra leaves \$26



SIMPLEX ALBUM

CORNERS of prints are inserted underneath raised corners, no pasting and in most cases no trimming necessary, as a slight variation in the size of the prints is provided for by the ample slots. Loose-leaf style. Artificial leather cover finished with an embossed colored modernistic design. Each album holds 200 prints on its slotted pages and is provided with ten plain leaves for odd-size prints.



No. 1, 8 1/2 x 12, for 2 1/4 x 3 1/4 prints . . . \$2.50 No. 1A, 9 x 13 3/4, for 2 1/2 x 4 1/4 prints . . . \$3.00
 Package of 6 extra leaves: For No. 1, 2 1/4 x 3 1/4 prints, \$.67; for No. 1A, 2 1/2 x 4 1/4 prints, \$.77;
 Plain leaves for No. 1, for odd-size prints, \$.19; for No. 1A, for odd-size prints, \$.26.

STRAND ALBUM



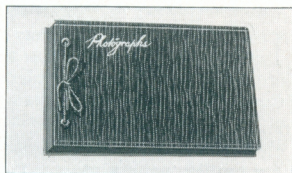
LOOSE-LEAF, open back style—handsome and durable. Genuine leather cover, black, and finished to resemble walrus hide. "Photographs" stamped in gold leaf. 50 black leaves, held in place by metal tubes and cord through cover. This is a quality album, conservatively styled and one that will stand long wear.

B, 7 x 11 . . . \$3.25 D, 9 x 14 . . . \$5.50 E, 11 x 14 . . . \$6.50
 Package of 12 extra leaves: Size B (7 x 11), \$.26; Size D (9 x 14), \$.41;
 Size E (11 x 14), \$.52

BALTIC ALBUM

GENUINE black cowhide leather cover of heavy crepe design. Tooled marginal line and "Photographs" in script. Loose-leaf, open back style—50 black leaves.

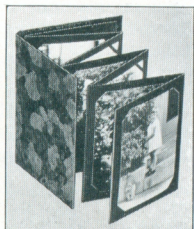
B, 7 x 11 . . . \$3.00 C, 10 x 12 . . . \$4.25
 Package 12 extra leaves: Size B, (7 x 11), \$.26; Size C, (10 x 12), \$.36.



WEEK-END ALBUM

MADE on the loose-leaf plan with flexible leather covers of assorted colors and 12 leaves. Most suitable for the photographic souvenirs of a week-end visit.

No. 1, for 2 1/2 x 4 1/4 prints . . . \$.35 No. 2, for 3 1/4 x 5 1/2 . . . \$.50
 Extra leaves: No. 1, per dozen \$.8; No. 2, per dozen, \$1.2



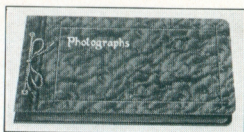
SIMPLEX POCKET PHOTO CASES

A LIGHT-WEIGHT case that will hold your prized pictures of the home, children, etc., and that will fit your coat pocket or handbag. It keeps prints clean and quickly accessible. The container has the Simplex die-cut slots, so that standard-sized prints are easily inserted—and quickly taken out when they are to be placed in an album. Each case holds 12 prints on an accordion-like, folded leaf. Cloth cover of floral design.

No.	Standard Size of trimmed print	Price each
127A	For 12 1 7/8 x 2 3/4 Prints	\$.25
120A	For 12 2 1/2 x 3 1/2 Prints	.30
116A	For 12 2 3/4 x 4 1/2 Prints	.30

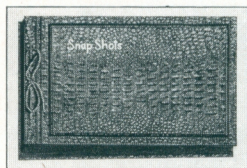
GLENDALE ALBUM

HERE is a moderately priced album that will stand long wear. Loose-leaf, open back style with black linen finish cloth cover on which the word "Photographs" is stamped in gold. The leaves are black with rounded corners. They are held in place by metal tubes through cover and a black silk-finished cord.



A, 5 x 8 \$1.25 B, 7 x 11 \$1.50 C, 10 x 12 \$2.50
 Package 12 extra leaves: Size A, (5 x 8), \$.19; Size B, (7 x 11), \$.26; Size C, (10 x 12), \$.36

FLORIDA ALBUM



UNLESS one actually examines this good-looking album, its modest price is bound to create a wrong impression of its qualities. Its cover, held in position by metal tubes and a silk finished cord, is of alligator finished artificial leather of a dark brown shade. In the upper left-hand corner the words "Snap Shots" are embossed in gold. Open back style, complete with 50 black leaves.

B, 7 x 11 \$1.15

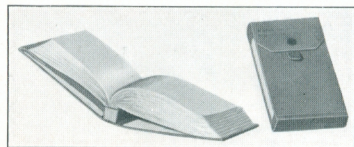
TROJAN ALBUM

THIS album adequately meets the demand for an album of good appearance at a most moderate price. The cover is of heavy leather-embossed black enamelled paper on which the word "Snapshots" is stamped in gold. The album is of the popular loose-leaf style with 25 black leaves and is available in one size only.



A, 7 x 10 \$.25 Package of 12 extra leaves \$.26

KODAK NEGATIVE ALBUMS



WITH a Kodak Negative Album the picture-taker can store film negatives in neat transparent envelopes, where they can be viewed without being handled or removed. They are ready for reprints, safe from loss or damage. Each album holds 100 negatives, except the first one, which holds 200.

These albums afford the best means yet devised for the orderly filing of negatives. They will be found invaluable for protecting negatives made on trips and vacations, as well as for preserving the films that quickly accumulate around the home. Each album includes a page for indexing subjects.

For 200 negatives, $1\frac{5}{16} \times 1\frac{9}{16}$, in strips of 4 . . . \$1.30
 For 100 negatives, $2\frac{1}{4} \times 3\frac{1}{4}$ 1.30
 For 100 negatives, $2\frac{1}{2} \times 4\frac{1}{4}$ 1.30

For 100 negatives, $3\frac{1}{4} \times 4\frac{1}{4}$ \$1.55
 For 100 negatives, 4×5 1.55
 For 100 negatives, $3\frac{1}{4} \times 5\frac{1}{2}$ 1.55

KODAK TESTED CHEMICALS

CERTAINTY of good results in making negatives and prints depends as much on the quality of your chemicals as on any other one thing. Most of the chemicals listed below are manufactured in the plants of the Kodak Company, and are tested photographically and for purity before the C. K. C. seal is affixed.



Acid, Acetic, 28 per cent C. P.—per pound bottle	\$.40
Acid, Citric—per one pound bottle	1.30
Acid, Eastman Pyrogallic—per ounce bottle33
Acid Fixing Powder, Kodak—per pound package26
Acid Fixing Powder, Kodak—per half-pound package16
Alum, Potassium, fine crystal—per pound20
Elon—per ounce43
Hydroquinone—per ounce can20
Hydroquinone Developer Powders, Eastman, in sealed glass tubes—per package of five powders40
Intensifier, Eastman (Chromium)—per glass tube21
M. Q. Developer, Eastman—per package of five tubes36
Nepera Solution, 4-ounce bottle31
Ditto, 16-ounce bottle93
Nepera Auxiliary Powders (for converting Nepera Solution to a film or plate developer), package of 1247
Potassium Bromide, granular—per ounce can14
Pyro Developer Powders, Eastman, in glass tubes—per package of five tubes40
Re-developer, Velox, including bleaching agent—per package of twelve tubes	1.15
Reducer and Stain Remover, Eastman—per box of five tubes75
Sodium Carbonate, Eastman Tested (desiccated)—per pound can26
Sodium Sulphite, Eastman Tested (desiccated)—per pound can28
Sodium Thiosulphate (Hypo), granular—per pound21
Special Developer Powders, Eastman—per half dozen36
Special Developer Powders, Eastman, in glass tubes—per package of five40
Velox Liquid Hardener, 4-ounce bottle31
Ditto, 8-ounce bottle47

For Tank Developer Chemicals, see pages 38, 39.

TERMS

THE prices in this catalogue are strictly net, except to regular dealers who carry our goods in stock. THESE PRICES ARE, HOWEVER, SUBJECT TO CHANGE WITHOUT NOTICE. For the convenience of our customers, we recommend that they buy from a dealer in photographic goods, as by so doing they can save time and transportation charges.

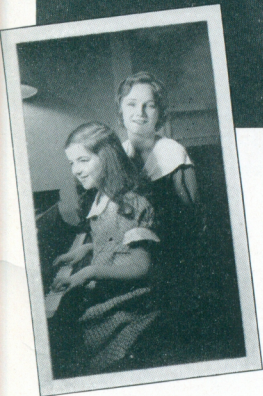
KODAK is the registered and common-law Trade Mark of the Kodak Company, and cannot be rightfully applied except to goods of their manufacture. When a dealer tries to sell you, under the Kodak name, a camera or films or other goods not of their manufacture, you can be sure that he has an inferior article that he is trying to market on the Kodak reputation.

CANADIAN KODAK Co., LIMITED, TORONTO, ONTARIO.



FROM A NEGATIVE MADE ON KODAK SUPER SENSITIVE PANCHROMATIC FILM.
(SEE FACING PAGE)





SNAPSHOTS AT NIGHT! WITH EASTMAN'S REMARKABLE "SS" PAN FILM

PICTURE-TAKING no longer ends at sun-down! Now you can make snapshots at night... indoors. The children at bedtime... fireside scenes... parties... now you can get the pictures you've always wanted. Use any camera having an *f.6.3* (or faster) lens. Load with Kodak Super Sensitive Panchromatic Film—three times as fast as ordinary film under artificial light. Use two or three thirty-five cent Mazda Photoflood bulbs—they screw into any light socket, and on an average are good for two hours of continuous use. Then hold the camera in your hand—as you would outdoors—and press the button. You've made a snapshot at NIGHT.

Ask your dealer (or write direct to Canadian Kodak Co., Limited) for the new free folder, "Snapshots at Night." This leaflet tells how best to arrange your lights; also, how to make successful night pictures with any camera, with the aid of the fifteen-cent Mazda Photoflash lamp.

Besides snapshots at night with a camera having an *f.6.3* or faster lens, you can make night pictures with *any* camera by means of short time exposures. See description of Kodak Super Sensitive Panchromatic Film (page 25), as well as Kodaflector and Photoflood and Photoflash lamps (page 31).

INDEX

A	<i>Page</i>		<i>Page</i>
Adapter to permit use of Photoflood lamp		Disks, Pictorial Diffusion	33
in old-style Auto-Focus Enlarger	44	Dry Mounting Tissue	47
Album Leaves	48, 49, 50	E	
Albums for Negatives	50	"Elementary Photographic Chemistry"	35
Albums for Prints	48, 49, 50	Enlarger Adapter, to permit use of Photo-	
Attachments, Portrait and Diffusion		flood lamp in old-style Auto-Focus Enlarger	44
Portrait	33	Enlargers	44, 45
B		Enlarging Papers	44
Blotter Roll, Photo	46	F	
Brownies:		Ferrotype Plates	47
Six-16 and Six-20	16, 17	Film	25, 26, 27
Six-16 and Six-20 Juniors	18, 19	Film Clips	39, 40
C		Film Holders, Combination Plate and	27
Cable Release	35	Film Packs	26
Camera Supports	30, 31	Film Tanks, Roll Film and Film Pack	38, 39
Candle Lamp	36	Filters, Color and Sky	33
Candles for Candle Lamp	36	Focusing Cloth, Rubber	47
Carrying Cases for Cameras (listed on		Frames, Printing	41, 42
camera pages)		G	
Charts, Mask	43	Glue	47
Chemicals, Kodak Tested	51	H	
Chemistry: "Elementary Photographic		Hangers	40
Chemistry"	35	Holders, Combination Plate and Film	27
Ciné-Kodak Eight	20, 21	Home Enlarger	45
Ciné-Kodak, Model K	22, 23	Home Movies	20 to 23
Ciné-Kodak Eight Film	21	"How To Make Good Pictures"	35
Ciné-Kodak Film	23	I	
Cleaning Fluid (for oil coloring)	46	Interval Timer	43
Clips, Film	39, 40	K	
Color Filters	33	Kodacolor	22
Coloring Outfits	45, 46	Kodacolor Film	23
Colors, Spotting	47	Kodaflector	31
Cotton, Stump	46	Kodaks:	
Cut Film	27	Jiffy	2, 3
D		Pupille	10, 11
Developing Boxes	40	Recomars 18 and 33	14, 15
Developing Hangers	40	Six-16 and Six-20	4 to 7
Developing and Printing Outfit	37	V. P. K., Model B and <i>Special</i>	8, 9
Developing Tanks	38, 39	Vollenda	12, 13
Developing Trays	39	Kodaloid Printing Masks	43
Diffusing Disc for Auto-Focus Enlarger	44	Kodapod	30
Diffusion Disks, Pictorial	33	Kodascope Eight	21
Diffusion Portrait Attachments	32	Kodascope, Model D	23
		Kodascope, Model K	22, 23

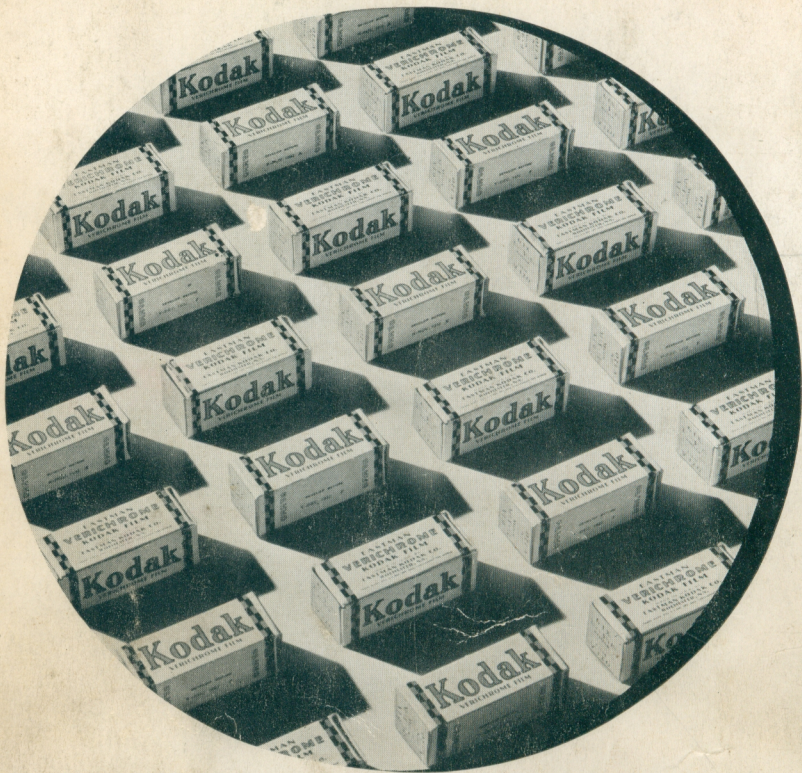
INDEX

L	<i>Page</i>	R	<i>Page</i>
Lamps:		Roll Film	25, 26
Candle	36	Rollers, Print	47
Photoflash	31		
Photoflood	31	S	
Safelight	36	Safelight Lamps	36
Lens Attachments	32, 33, 34	Safelights, Extra	36, 37
Lens Cleaner	34	Scales, Studio	38
Lenses	24	Self Timer	35
Lenses, Supplementary, for Kodak		Shutters	24
Recomars	15	Sizing Fluid	46
Lighting Unit for Indoor Picture		Skewers	46
Making (Kodaflector)	31	Sky Filters	33
M		Spotting Colors	47
Mask Charts	43	Squeegee	47
Masks, Printing	43	Stirring Rods:	
Mounting Tissue, Dry	47	Hard Rubber	47
O		Thermometer	40
Oil Colors, Transparent	46	Stump Cotton	46
Opaque	47	Super Sensitive Panchromatic Film,	
Optipod	31	Eastman	27
P		Super Sensitive Panchromatic Film,	
Packs, Film	26	Kodak	25, 26
Panatomic Film, Kodak	25, 26	Super Sensitive Panchromatic Film	
Panchromatic Films	25, 26, 27	Packs, Kodak	26
Paper Holder for Auto-Focus Enlarger	44	T	
Papers	42, 44	Tanks, Developing	38, 39
Paste	47	Terms	52
Photo Blotter Roll	46	Tested Chemicals, Kodak	51
Photo Cases, Pocket	49	Thermometers	40
Photo Paste	47	Thinning Medium, Transparent	46
Photoflash Lamps	31	Timer, Self	35
Photoflood Lamps	31	Timers	43
Photographic Publications	35	Trays, Developing	39
Pictorial Diffusion Disks	33	Trimming Boards	46
Plate and Film Holders, Combination	27	Tripods, Metal	30
Plates:		V	
Ferrotype	47	Velox Paper	42
Photographic	30	Verichrome Film, Kodak	25, 26
Portrait Attachments	32	Verichrome Film Packs, Kodak	26
Print Rollers	47	W	
Printer, Amateur	41	Water Colors, Transparent	45
Printing and Developing Outfit	37		
Printing Frames	41, 42		
Printing Masks	43		





Enlarged from part of a negative made on Kodak Panatomic Film



KODAK VERICHROME FILM

A wonderful new snapshot era was ushered in by this film. The sunlight problem is gone. Verichrome lets you take good pictures on dull days as well as bright. Its two coatings—

fast and slow—protect you against both under- and over-exposure. *They safeguard your picture results.* Look for Kodak Verichrome Film in the yellow box with checkered stripes.

Photographic Stores Limited

65 Sparks Street

Ottawa, Ontario

If it isn't an Eastman, it isn't a Kodak