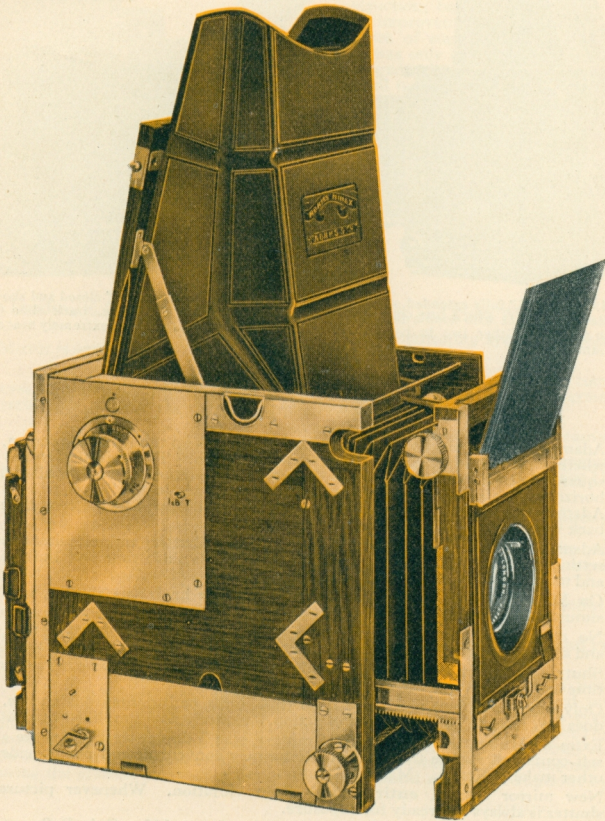


A. ADAMS & Co. LTD



24, CHURCH * ROAD, LONDON. W.C. 2.

THE ADAMS
MINEX

The 1929
MODEL "A."

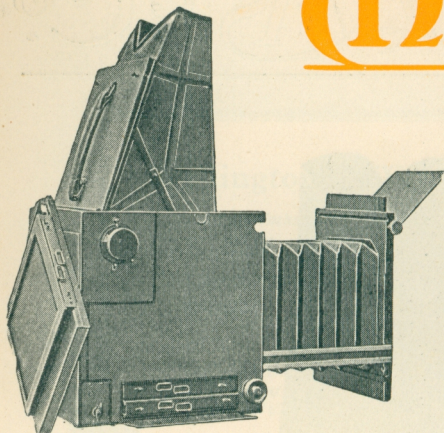


Fig. 1.—Model "A" fully extended, showing Revolving Back with double dark slide in position. Other two in bottom of Camera.

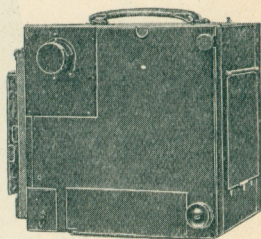


Fig. 2—Model "A" closed and showing Right Side and Front. Dark Slide Chamber at bottom. Note extremely neat appearance.

The Adams MINEX Cameras are the greatest advance ever made in Reflex Camera construction. Several important improvements have been introduced in all 1929 Models.

No other camera in the world possesses all the following remarkable features :

1. Adams Revolving Back automatically operates mask on top focussing screen, showing whether plate is in Vertical or Horizontal position. The objection to the ordinary square screen is that the operator may compose his picture vertically whilst the plate is horizontal or vice versa. A very special feature in Model "A." Adams automatic masking device obviates the possibility of such errors, the revolving back working in conjunction with masking lever.
2. Adams MINEX **Self-Capping** Focal Plane Shutter and simultaneous mirror setting device. Speeds about $\frac{1}{1000}$ th to 3 seconds; also time and bulb. Simplest and most reliable shutter obtainable.
3. On MINEX, three-quarters of a turn of shutter knob sets shutter, **and mirror** simultaneously! It is **THE only** camera with this great advantage.
4. No complications in setting shutter speeds. Instantaneously set in **any** position, and **always** correctly indicated, by simply turning knob to required speed.
5. Shutter **and** mirror operated by **single** release, on **all** speeds, whether instantaneous, time or bulb. Never accomplished before!
6. Only **one** movement to change from time, bulb, or instantaneous speeds. Mirror does **not** have to be thrown out of action. Entirely new simplified movement.
7. Extra focussing screen for **back** of camera, also 3 double dark slides are all carried self-contained **inside** the camera. Extremely convenient and not provided in **any** other make of Reflex. Model "A" only.
8. New mirror system, **entirely** free from vibration. Whenever picture is seen shutter is always set, ready for exposure.
9. Adams 4-ways swing front fitted as quoted. See p. 122. Only Reflex so fitted.
10. Handle on top. Most convenient position for carrying and holding.
11. Magnifiers self-contained in hood are supplied in every Minex and can be adjusted to suit all sights. Customers abroad should send optician's prescription if special glasses are required. Glasses to customer's prescription £1/1/0 extra.
12. Brass screws used throughout, also gilded and lacquered springs. Mirror is adjustable for rapidity of movement. The finest material procurable only used; made and finished by highly skilled craftsmen.

The Adams policy of manufacturing only the highest class Photographic Apparatus is still maintained under the same personal supervision.

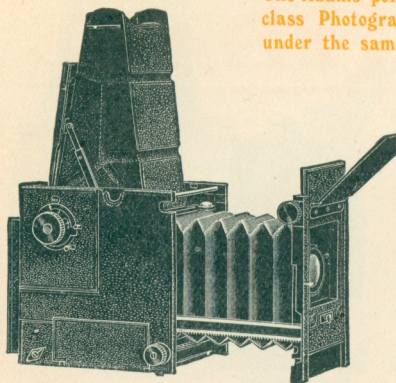


Fig. 3.—Model "A" opened and extended, partly showing Rising Front, Sky Shade, level 4-way Swing Front; one dark slide in position, other two in camera.

The Adams MINEX holds an unparalleled reputation, and stands for all that is best in Reflex Instruments, and is everywhere acknowledged to be the standard Reflex Camera of the world. It has revolutionized Reflex Camera construction, being the first to start an era of improvement that has benefited the users of such instruments everywhere. It was only introduced after actual prolonged trial, and was not put forward until its improvements were found to be of real and practical value.

Being the pioneers of Reflex Cameras, we were the first to design the triple focussing hood, and also the now well-known revolving back, both of which have been imitated by manufacturers in every country.

IT IS IDEAL FOR PORTRAITURE & FIGURE STUDIES. Natural History subjects, Landscape, General, Sporting, Athletic, Telephoto and Press Work.

MIRROR SYSTEM. Original and exclusive. Mirror reflecting system in most perfect form. Mirror is special optical glass and finest silvered surface.

FOCUSsing HOOD erected and folded by opening and closing top, fits comfortably around eyes. Magnifiers self-contained in hood. Hood raises to permit of ground glass being reversed for colour work, and for cleaning mirror and interior.

EXTRA BACK FOCUSsing SCREEN. For tripod work carried **inside** camera hood.

CHANGING SYSTEMS. Most changing devices can be fitted, slides, changing boxes, for plates or cut films, roll film holders, film pack adapters, etc. For prices, see page 117.

ADAMS MINEX SELF-CAPPING FOCAL PLANE SHUTTER.

All speeds set with **half turn** of setting knob. Merely place speed required opposite indicator and it is correct. Speeds adjusted before or after setting shutter.

Speeds from $\frac{1}{1000}$ th to $\frac{1}{4}$ th of second by shutter slit, and $\frac{1}{2}$ to 3 seconds by pneumatic valve. Also "Time" and "Bulb" Exposures. Antinous release can be fitted if required.

The special Minex tropical shutter fabric is used on all Models.

ADAMS FOUR-WAYS SWING FRONT. The MINEX is the only Reflex having the advantage of a **FOUR-WAYS** Swing Front. See page 122.

Our front swings lens all four ways, and always on its optical centre, and registers lens parallel to plate.

CONSTRUCTION. The MINEX is the finest Reflex Instrument it is possible to construct; is the most accurate, durable and complete Camera our long and unrivalled experience can provide; finest workmanship, carefully adjusted and tested in every part; is as reliable for all climates as it is possible to make it. Brass screws throughout; extension runners metal running in metal to ensure easy and accurate focussing. Springs coppered, gilded and lacquered to prevent rust. Strong double rack and pinion of diagonal pattern, thus ensuring the greatest accuracy. Every Camera is **hand made throughout** by skilled craftsmen.

SIZES. "A" MODEL.	High.	Wide.	Long.	Extension, Plate to Camera front.		LENSES usable, measured from back of lens mount to plate.	
				In.	Shortest, about ins.	Longest, about ins.	
3½ × 2½ or 6½ × 9 c.m.	6½	5	6½	10	4	11	
4½ × 3½ - - - -	7½	5½	7½	12½	4½	13½	
5 × 4 or 9 × 12 c.m.	7½	6½	8	13½	5	15	
10 × 15 c.m. - -	8½	7½	9	16	6	17½	
6½ × 4½ - - - -	9½	7½	9½	17	6½	18	

The extension required for a Telephoto Lens is about half its equivalent focus.

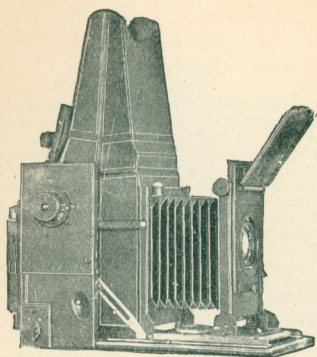


Fig. 1.—Folding Model, opened and extended, partly showing Rising Front and Sky Shade.

The Adams FOLDING MINEX

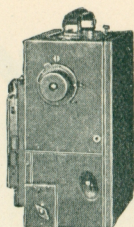


Fig. 2.—Folding Model, closed. Note extremely neat appearance.



REGD. TRADE MARK

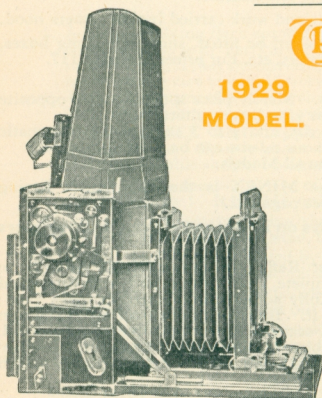
**1929
MODEL.**

THE Adams FOLDING MINEX is designed upon original and exceptional lines, and it embodies the full range of facilities a reflex camera worker can desire. We have succeeded in making a very real and tangible advance in the evolution of the Reflex instrument.

It is the first successful complete Folding Reflex. We have made a large number, and it is now in as perfect a state as possible. It is the perfection of the Reflex system, has double extension, enabling use of varying Foci, Telephoto and large aperture lenses.

Our new Model possesses the many advantages of our ordinary "A" pattern. Where size and portability are concerned the Folding Model should be selected.

Opening and closing is simple and rapid. It is a most convenient shape for carrying. For all special features see pages 104 and 105.



**1929
MODEL.**

TROPICAL MODEL

FOLDING MINEX

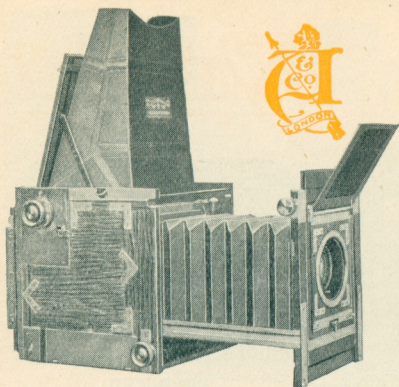
The most perfect Scientific Photographic Camera for Tropical Work.

This model is exactly the same as our Folding Minex in all movements, etc. It is constructed of well seasoned teak, fully brass bound and all metal parts of hardened brass, lacquered. All leather is the finest Russia finished procurable.

Fig. 3—Shutter Plate removed showing whole of Shutter Mechanism.

Sizes.	Measurements.			Extension, Plate to Camera front.	LENSES usable, measured from back of lens mount to plate.		
	High.	Wide.	Long.		Shortest, about in.	Longest, about in.	
3½ × 2½ or 6½ × 9 c.m.	6½	4½	5½	12	4½	10½	
4½ × 3½ - - - - -	8½	4½	6½	14	5	12	
5 × 4 or 9 × 12 c.m.	8½	5½	7½	15	5½	13	
10 × 15 c.m. - - - -	9½	5½	8	17	6½	16	
6½ × 4½ - - - - -	11	5½	8½	18	7	17	

If lens and cone are reversed, all sizes permit of about 3 in. longer extension.



THE ADAMS TROPICAL MINEX

Finest piece of scientific cabinet work ever manufactured, as well as most substantial and reliable. Brass revolving back and brass screws throughout, coppered, gilded and lacquered springs, polished teak and **fully** brass bound, with Russia finished leather bellows and focussing hood.

Whilst ordinary model is specially designed for use in all parts of the world, advantage of Tropical is that it is extra strongly made, and brass bound in all parts. All knobs, etc., are of strong brass.

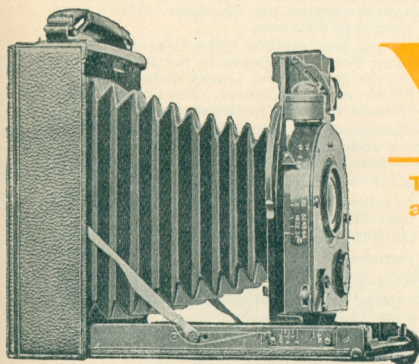
All special features and movement of the "A" pattern are embodied in this model (see pages 104 and 105).

Tropical Model "A."

PRICE LIST OF MINEX CAMERAS

	"A" Model	Tropical Model "A"	Folding Model	Tropical Folding
3½ × 2½ or 6½ × 9 c.m.	£50 0 0	£75 0 0	£60 0 0	£80 0 0
4½ × 3½ - - - - -	55 0 0	80 0 0	65 0 0	85 0 0
5 × 4 or 9 × 12 c.m.	60 0 0	85 0 0	70 0 0	90 0 0
5½ × 3½ - - - - -	65 0 0	90 0 0	75 0 0	100 0 0
6½ × 4½ or 10 × 15 c.m.	70 0 0	100 0 0	80 0 0	110 0 0

Price of "A" Model includes 3 Double Dark Slides; Folding Model, Film Pack Adapter.
 (If listed lens is **not** purchased, add 100/- to all Camera prices).
 For list of most suitable lenses see p. 116.



Model "A" for Plate, Film Pack or Cut Film.

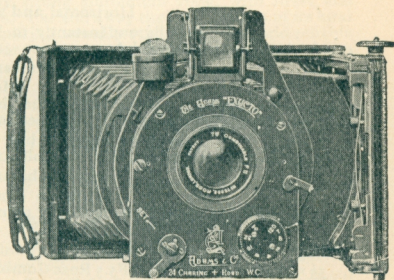
OF small Cameras it will probably prove the ultimate degree of perfection.

Manufactured entirely of strong aluminum alloy and hardened brass, black bronzed, covered with finest morocco and best leather bellows, every camera individually scientifically constructed, carefully adjusted and tested in every movement.

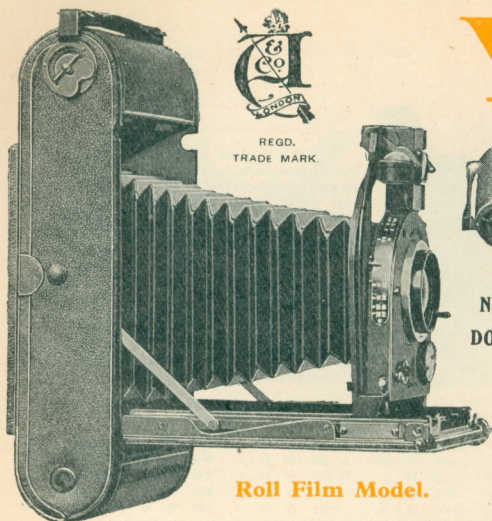
New Square Model Verto Camera with Adams Revolving Back, for description see page 110.

THE ADAMS VERTO

The ultimate conception of a Super-Camera with Hyper-Precision.

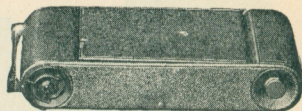


Showing the improved system of revolving the whole front—lens, finder and level—when taking a horizontal picture.



REGD.
TRADE MARK.

The Adams
VERTO



Camera Closed.

**NEATEST & MOST COMPACT
DOUBLE EXTENSION CAMERA
PRODUCED.**

The most Superb, Simple
and Accurate of
ALL Roll Film Cameras.

Roll Film Model.

DOUBLE EXTENSION. All models are **double extension**, thus the single combinations of suitable lenses may be used. With combined lenses the closest objects may be focussed **up to full size**, thus affording advantages of copying, etc. No other ordinary form of folding camera permits this. Is beautifully rigid at all distances.

REVOLVING FRONT. This is a new and very valuable improvement. In the Adams VERTO the automatic Identoscope Brilliant Finder is **always** in the same relative position to the Lens, as it is properly attached to the shutter, and always **moves with it**. Finder is also easier to view, as it is always in the centre of the Camera. The Camera is also much more convenient to hold, and the shutter release is **always in the same position**.

LENSES. Ross Combinable, working at F5.5. Single Combination F11. The VERTO is scaled for the combined lens for all distances and for the single lens at infinity, other suitable lenses can be fitted, also short focus or wide angle lenses of any suitable make.

SHUTTER. High Grade, working from 200th to 1 sec., TIME and BULB.

PLATES AND FILMS. Dark slides and other changing systems are interchangeable in both models, and are of **same register**, see page 117.

FINDER. The Adams Brilliant IDENTOSCOPE, see page 119.

LEVEL. For both horizontal and vertical pictures.

RISEING FRONTS. Horizontal and vertical, about quarter of plate **each way**.

FOCUSING. Pulls out instantly to "infinity." Engraved scales, hooded focussing screen supplied with Model A.

TRIPOD BUSHES. For horizontal and vertical. Suitable tripods, see page 118.

GENERAL CONSTRUCTION. Mostly strong aluminium alloy, with brass and nickel silver, leather covering and leather bellows. Exceedingly strong, well constructed. Lens shutter and all fittings self-contained inside camera, protected from dust.

"A" MODEL includes camera, best quality film pack adapter, hooded focussing screen, Adams Identoscope, Ross Combinable Lens.

ROLL-FILM MODEL can also be used for plates, film packs, etc.

VERTO LENS HOOD, fitted on lens and being collapsible, automatically extends. Its use greatly increases the brilliancy of negatives. Price 25/- all sizes. See page 110.

PRICES :

No. Size

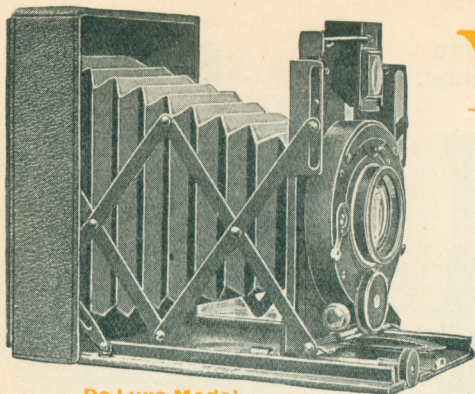
1.	$3\frac{1}{2} \times 2\frac{1}{2}$ ($6\frac{1}{2} \times 9$ c.m.)	4 in. F5.5 Ross Combinable
2.	$4\frac{1}{2} \times 3\frac{1}{2}$	5 $\frac{1}{2}$ in. F5.5 Ross Combinable
3.	$5\frac{1}{2} \times 3\frac{1}{2}$	6 $\frac{1}{2}$ in. F5.5 Ross Combinable

"A" MODEL.

£37 10 0
40 0 0
45 0 0

**ROLL FILM
MODEL.**

£42 10 0
45 0 0
48 0 0



De Luxe Model.

THE ROSS MODEL DE LUXE VESTA

The smallest, lightest and
most compact Camera
in the World.

THE MOST PERFECT
FOLDING POCKET CAMERA
MADE.

Every feature the most fastidious
can demand.

Fitted with the Adams
Automatic Identoscope Finder

A wonderful improvement
upon ground glass finders.

LENSES. Ross F4.5. The $3\frac{1}{2} \times 2\frac{1}{2}$ is fitted with Lenses of $4\frac{1}{2}$ in. focus; the $4\frac{1}{4} \times 3\frac{1}{4}$ size with F4.5 of $5\frac{1}{2}$ or 6 in. focus (6 in. is 30/- extra), Post Card $6\frac{1}{2}$ in., F4.5, and Stereo with F6.8 Homocentric, these are recommended in preference to F4.5, but the latter can be fitted.

SHUTTER. Controlled Gear for all speeds, also time and bulb. Antinous Release can also be supplied, 3/6 extra. Shutters fitted on $3\frac{1}{2} \times 2\frac{1}{2}$ with F4.5 Lenses, from 250th, and $4\frac{1}{4} \times 3\frac{1}{4}$ from 200th of a second. Stereoscopic from 250th of a second. All sizes work to 1 second; also TIME and BULB.

PLATES AND FILMS. A special adapter for the use of daylight loading film packs is included, Double Dark Slides, Cut Film Magazine and the New Automatic Changing Box for plates or cut films being the same register are interchangeable.

FINDER. The IDENTOSCOPE shows exact image, even when front raised, see p. 119.

LEVEL. For both horizontal and vertical pictures.

RISING FRONTS. The VESTA has rising front, for vertical and horizontal pictures.

OPENING AND CLOSING. Upon opening the flap or baseboard, the front draws out into its fixed position. Touch its catch, and it slides back again.

FOCUSING. Focusses to about **one** yard, and pulls out instantly to "infinity," or any other distance required. Besides engraved scale, a hooded ground glass focussing screen is supplied, invaluable for Portrait and Architectural subjects.

TRIPOD BUSHES are fitted to the camera, permitting it to be used upon a tripod either horizontally or vertically.

"A" MODEL is fitted with Direct Vision Finder, showing rise each way, automatically erects itself when Camera is opened and folds in when closed, and is provided for both vertical and horizontal Rising Fronts.

GENERAL CONSTRUCTION. Mostly strong aluminium alloy, with brass and nickel silver, leather covering and leather bellows. Far and away the best Camera of its kind for Colonial and Tropical use, also travellers requiring a **really strong** compact and reliable instrument. The Adams Lazy-Tongs or Trellis Bar system ensures parallelism of lens and film.

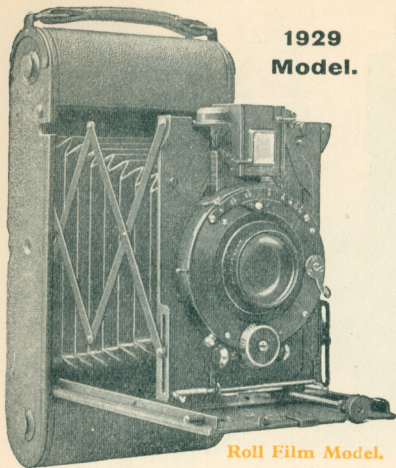
PRICE LIST OF VESTA CAMERAS.

	$3\frac{1}{2}$ by $2\frac{1}{2}$ in. ($6\frac{1}{2}$ by 9 cm.)	$4\frac{1}{4}$ by $3\frac{1}{4}$ in.	$5\frac{1}{2}$ by $3\frac{1}{2}$ in.	STEREO $5\frac{1}{2}$ by $3\frac{1}{2}$ in.
MODEL "A" (Ross Homo. F/6.8)	17 0 0	20 0 0	25 0 0	34 0 0
MODEL DE LUXE (Ross Xpres F/4.5)	25 0 0	27 10 0	35 0 0	42 0 0
ROLL-FILM (Ross Xpres F/4.5)	30 0 0	33 0 0	40 0 0	47 0 0

Prices of Models A and De Luxe include Film Pack Adapter. Dark Slides, Changing Boxes, &c., can be supplied to all models. See page 117.

Teleros and Dallon Telephoto Lenses can be fitted to all Models of the "VESTA" and "VERTO" Cameras, and are made interchangeable with existing lens.

Cases. For Prices of Waterproof Canvas, Morocco, Solid Hide and Pigskin, see page 121.



1929 Model.

Roll-Film VESTA

A high-class and perfected Roll Film Camera, and we now have pleasure in introducing an absolutely unique instrument of its kind, embodying all the special features of the Vesta De Luxe. The back is adapted without alteration for Dark Slides or other changing systems.

Although only using the ordinary stock Film Spools, a charmingly proportioned picture is obtained, owing to the construction of the Camera utilising nearly the full length of the film. The Adams Vesta is the ONLY Roll Film Camera affording this immense advantage.

Particular attention is drawn to the Adams IDENTOSCOPE Finder, as this places Adams Cameras in front of all competitors. It is the ONLY Finder showing automatically the correct picture when using Camera vertical or horizontal, even with rising front raised.

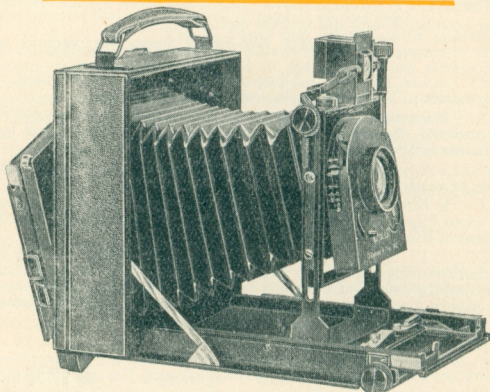
For constructional details and prices see page 109.

Roll Film Model.

Entirely New Model 1929.

THE ADAMS VERTO

Square Body Revolving Back.



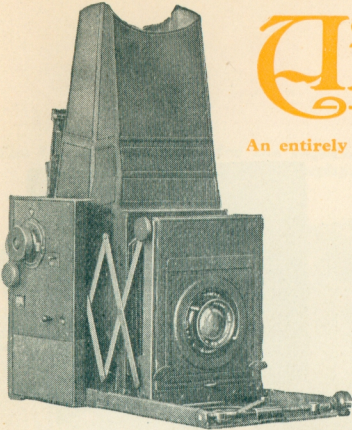
This new model embodying the important features and strong construction produced with the same accuracy as our well-known Verto, including the extremely rigid front and long double base board, enabling the use of Lenses of varying Foci from wide angle to long focus including Telephoto, the same perfectly adjusted shutter of high efficiency, and "Identoscope" finder are fitted to this new model, and a full effective rising front is provided. Also the Adams well-known revolving back, permitting any changing system being used, either vertically or horizontally, without removing the Camera from the tripod. The Adams Hooded Focussing Screen is supplied. A direct vision wire finder can be fitted if desired. This model will be found most useful to the serious worker who wishes a camera of portability and unlimited capability for every class of photography. Perfectly and scientifically constructed with the same accuracy and precision as all our apparatus.

3½ × 2½ with 4½	Ross Combinable Lens F.5.5	£42 0 0
4¼ × 5¼ " 5½	" " " " " "	£45 0 0
5 × 4 or 5½ × 3½	" " " " " "	£48 0 0

Prices include three double dark slides.

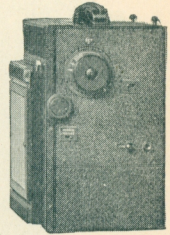
The Adams FOLDING AIDEX

An entirely "New Model" for 1929.



Open.

Patent applied for.



Closed.

**Very Compact.
Specially designed
for large aperture
and
Telephoto Lenses.**

The Adams AIDEX is a folding reflex designed upon quite novel lines and possesses the following great advantages.

SHUTTER. Self-capping Minex focal plane shutter working at all speeds from $\frac{1}{1000}$ to $\frac{1}{8}$, also bulb and time, a pneumatic release is also fitted with automatic time valve, enabling speeds of $\frac{1}{4}$, $\frac{1}{2}$, 1, 2 and 3 seconds to be given.

MIRROR. Independent mirror action so that camera may be used either as a Reflex or Press camera. The mirror is released and the shutter can be used independently.

FOCUSING. An entirely new patented form of fine adjustment for focussing, by which means absolute accuracy and rigidity are obtained. It is an extremely ingenious device and a distinct advance on all previous methods of focussing, being a rapid adjustment.

RISING FRONT. An extra amount of rising front is obtained by means of our rollable front system, giving about $1\frac{1}{4}$ " rise on a $\frac{1}{4}$ " plate, strengthened by the addition of our well-known lazytongs side supports, and is provided with an extra large panel which will accommodate heavy lenses of large aperture, also telephoto lenses. Large hood provided for focussing.

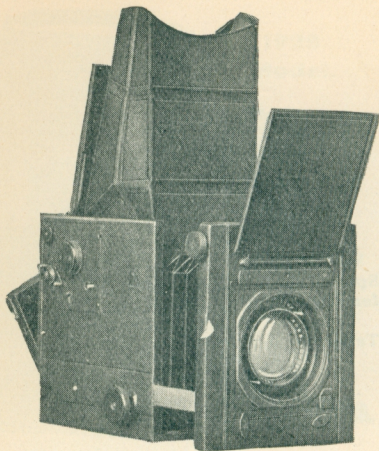
The well-known Adams revolving self-locking back is provided. Bush for T screw is provided for using camera on tripod.

Camera when closed is portable and compact and is of very neat appearance, covered in the finest black Persian goat morocco leather. An extremely convenient handle is fitted on top of camera.

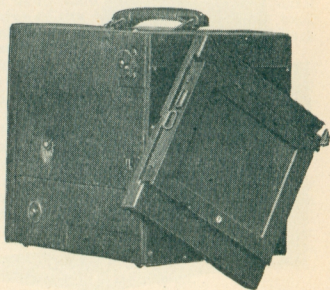
The AIDEX is manufactured under the same conditions and workmanship as our well-known Minex, every little detail has been carefully studied and worked out with the same highly technical skill which has made our high-class apparatus so appreciated in all parts of the world.

PRICES

	$3\frac{1}{2} \times 2\frac{1}{2}$	$4\frac{1}{4} \times 3\frac{1}{4}$
Camera, Film Pack Adapter and Ross 3.5 Xpres	£60 0 0	£72 0 0
Camera only, without lens	£50 0 0	£60 0 0



The Adams
RADEX



IMPORTANT INTRODUCTION.

IN order to meet the many enquiries we have received for a high-class scientifically constructed Reflex at a popular price, we have introduced an entirely new camera. The Radex is hand-made throughout by craftsmen who have specialised in the production of the world-famous Minex Cameras for more than twenty years, consequently the degree of perfection cannot be reproduced in any other Reflex Camera.

SPECIAL FEATURES OF THE RADEX REFLEX.

Quick-setting shutter by one turn of winding knob. Mirror brought into position by setting lever on side of camera. Shutter speeds can be changed instantly by placing speed dial to exposure required. No calculations necessary.

Camera can be used as a press or stand camera, by placing mirror out of action, and focal plane shutter used independently of mirror at all speeds. Shutter and mirror release simultaneously. Long extension, best quality leather bellows, rising and falling front. Revolving back for vertical or horizontal pictures.

Large square hood for focussing. Specially large front to accommodate lenses of large aperture.

SPECIFICATION.

BODY. Constructed of well-seasoned mahogany, covered in black morocco leather, is extremely small and light.

FOCUSING. Finely cut rack of hardened brass and steel twisted pinion, ensuring accuracy and precision.

BELLOWS. Long extension, large square leather bellows.

HOOD. Fitted to top of camera, automatically erected, of ample size for efficiency when focussing. Is removable to enable focussing screen, mirror and interior of camera to be easily cleaned or adjusted. Camera is also fitted with level.

HANDLE. Large leather handle provided for convenience of carrying.

MIRROR SYSTEM. Silver surface, mirror spring raised, obviating risk of jar or vibration when released.

SHUTTER. Easily adjusted for varying speeds from $\frac{1}{800}$ th to $\frac{1}{2}$ th of a second, also time exposure.

Our specially silk light-tight shutter fabric as used in the Minex Camera is employed.

REVOLVING BACK. The well-known Adams revolving back with self-locking device for horizontal or vertical pictures is fitted.

Camera is fitted with adjustable sky shade and bush for T screw for fixing to tripod stand.

CHANGING SYSTEMS. Double dark slides, film pack adapter, automatic changing boxes for plates or film, roll film holders and cut film magazines are all interchangeable, see page 117.

PRICES.

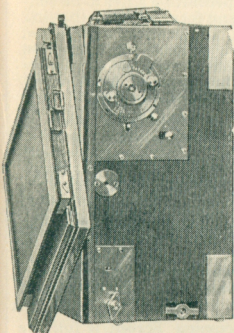
	$3\frac{1}{2} \times 2\frac{1}{2}$ in.	$\frac{1}{4}$ Plate.
Camera, three double dark slides, Ross Xpres F4.5 lens	£42 10 0	£45 0 0
Do. do. fitted F3.5 Xpres	£46 10 0	£49 0 0
Do. do. fitted F2.9 Xpres	£50 10 0	£54 0 0

Any suitable lens can be supplied instead of above if desired. Other sizes to order.

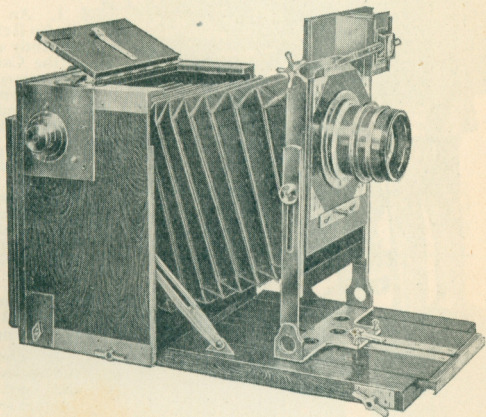
THE ADAMS VAIDO

An Instrument of
Superb Construction,
Great Precision and
Thorough Reliability.

The Universal Camera for the expert, embracing every movement. Adapted for all branches of photography. Ideal for Architectural subjects.



Tropical Model closed, showing Adams Revolving Back and Minex Shutter.



Showing Rising Front, Identscope Finder, etc.

THE ADAMS VAIDO is the most perfect example of the well-known type of hand and stand cameras, it is a great advance upon cameras of similar style. It dispenses with the very complicated lever slotted systems used by many makers, and yet retains in a far simpler form **ALL** their advantages without their serious defects. We were the originators of the revolving back upon Hand Cameras, and this is applied in its most perfect form. It has the advantage of being fitted with our new **MINEX** self-capping Focal Plane Shutter, giving speeds from 1/1000th to 3 seconds, no other shutter is necessary, and any variety of lenses from wide angle to very long focus or telephoto lenses may be used, and quickly changed from one lens to another. The VAIDO is fitted with the Adams **IDENTOSCOPE** Finder, automatically showing rise. See page 119.

SWING AND RISING FRONT. Double rising front provided, the first being rack and pinion. Adams **IDENTOSCOPE** shows whole of this rise. A still greater rise of some inches also provided, essential for architectural work.

Adams REVOLVING Back is also fitted same as on "MINEX."

LENSES. Most kinds may be fitted, from Wide Angle to Telephoto. Those listed upon page 116 recommended.

FOCUSING. Accurately scaled to one or more lenses. Hooded Focussing Screen. Focusses out immediately to infinity catch. Separate rack focussing for wide angle and ordinary lenses.

PRICES.

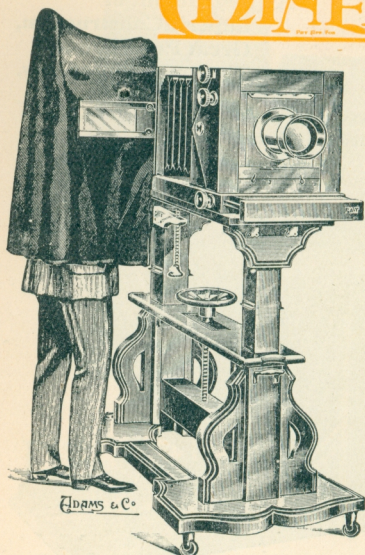
Size.	Approximate Sizes including Revolving Back			Extension from Screen to Lens Board.	Mahogany, covered Black Morocco.	Polished Teak covered Tropical Model Brass Bound.
	High	Wide	Thick			
3½ × 2½	5½ in.	5 in.	3½ in.	12 in.	£36 0 0	£47 10 0
¼ pl.	6 in.	5½ in.	3 in.	13 in.	£38 0 0	£50 0 0
or 9 × 12 c.m.	7 in.	6½ in.	3 in.	16½ in.	£40 0 0	£55 0 0
6½ × 4½	9½ in.	7½ in.	5 in.	21 in.	£50 0 0	£70 0 0

Above prices include three Double Dark Slides and Hooded Focussing Screen.

The same camera can be supplied without Focal Plane Shutter at 25% less.

STUDIO MINEX

THE MOST PERFECT STUDIO CAMERA EVER INVENTED.



Specially designed and invented by a professional for Portrait Work in the Studio, it embodies all the required movements and is admirable for Children, Adult and General Portraiture, being fitted with the Adams Silent Focal Plane Shutter. The only practical Studio Reflex Camera ever placed on the market.

1. An entirely new Portraiture or Studio Reflex, permitting sitter to be conveniently seen and focussed upon the **side** of the Camera, as shown in illustration. The screen being properly protected from light, yet permitting ample and convenient room under the hood (a large velvet canopy) for freedom of movement.
2. All principal movements made at **side** inside the hood chamber, such as focussing the sitter, setting mirror and shutter, watching the subject, composing the picture and releasing the shutter when the desired pose and expression is obtained also the Studio Stand can be manipulated, raised, lowered, or tilted from the same position.
3. Owing to viewing at **side**, camera can be placed against wall, affording extra studio length.
4. The Focussing Screen is full size and square, and marked to show horizontal and vertical pictures. Masks may be inserted for smaller sizes.
5. Mirror and Shutter are immediately set and exposure made by finger or pneumatic ball, and **without** the sitter seeing the action.
6. The plate is ready for exposure, whilst focussing is being done. There is **none** of the usual delay by having to first focus, then remove glass screen, then insert dark slide, then withdraw its shutter, then look at subject to see that all is ready, whilst the weary sitter has been making a trying effort to maintain a particular expression all the time. This is the **trying** part of the ordeal that the public so much dislike. **All** this is overcome with the Studio MINEX. The plate is ready for exposure, and the screen for focussing and the shutter ready set—and exposure made the **very instant** it is desired. For photographing babies, children, or animals, it is the only **successful** way.
7. Full particulars of the Adams Self-Capping Focal Plane Shutter, see page 104. Specially made for the Studio MINEX it is practically **quite** silent, with set speeds of $\frac{1}{2}$, $\frac{1}{4}$, $\frac{1}{8}$, $\frac{1}{16}$ and $\frac{1}{32}$ of a second; also prolonged "time" and "bulb." A pneumatic ball and time valve also permit of automatic exposures to three seconds.
8. The whole of the velvet canopy is fitted to a separate frame, and can be removed if required. The result of Swing Front movement, Rising and Falling Front, also Focussing, can all be seen upon Focussing Screen.
9. A Reversing Back is provided for taking pictures horizontally or vertically.
10. Removable Lens Panel capable of taking very large Portrait Lenses is included.
11. Camera most beautifully constructed of well-seasoned mahogany, and very strongly made in all parts, together with Stand it is the best and most handsome piece of Studio Apparatus ever introduced.

PRICES

Complete Camera as described, with one double book-form dark slide, $\frac{1}{2}$ plate	£75 0 0
Do. do. do. do. whole plate	£85 0 0
Very massive and handsome MINEX Studio Stand, with castors, and locking lever to secure firmness, also raising and lowering of tilting table	£25 0 0
Extra $\frac{1}{2}$ -plate book-form double dark slides Each	£2 15 0
Do. $\frac{1}{4}$ do. ,,	£3 10 0

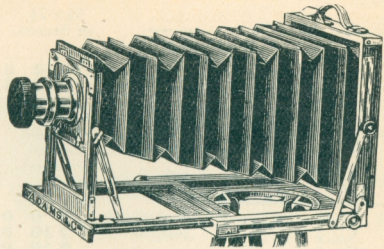
The Perfection of Field Cameras.

Adams

'CLUB'

ALL movements, but NO intricate complications. Best quality material and highest skilled workmanship.

Light, portable, compact. Square reversing back, rising and falling front, swinging motion vertical and horizontal swing back. Back slides to front, to use wide angle lenses and double extension for long focus lenses. Thoroughly strong and rigid, and suitable for all work. Dark slides have stop springs to shutters. Has revolving turntable in base of camera for three-fold Tripod. Can also be made for stereo work.



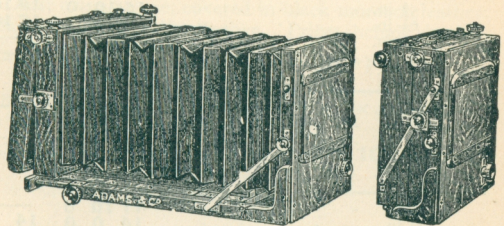
PRICES.

"Club" Camera, 3 double dark slides, turntable 3-fold tripod	6½ × 4½	8½ × 6½	10 × 8	12 × 10	15 × 12
Brass binding, extra	£25 0 0	£30 0 0	£40 0 0	£45 0 0	£50 0 0
	3 3 0	3 15 0	4 4 0	5 5 0	6 10 0

Adams

'Challenge'

being our own Manufacture, is of the Best Quality and Workmanship.



Made of finest seasoned mahogany, best leather bellows, long extension, double swing reversing back, rising and cross fronts, three best double bookform dark slides included.

The ideal camera specially suitable for groups, architectural, commercial, and engineering photography, extremely rigid and solidly built to withstand constant usage and capable of carrying long focus heavy lenses. For suitable lenses see page 116.

PRICES.

Camera and 3 double slides ...	6½ × 4½	8½ × 6½	10 × 8	12 × 10	15 × 12
Brass binding extra	£24 0 0	£28 10 0	£34 0 0	£38 10 0	£46 0 0
Extra double slides	3 3 0	3 15 0	4 4 0	5 5 0	6 10 0
Solid Hide Case, Camera and 3 slides	2 10 0	3 0 0	4 0 0	4 14 0	6 0 0
Rule joint 3-fold Tripod Stand	5 0 0	5 10 0	7 0 0	9 0 0	10 0 0
	3 3 0	4 4 0	5 5 0	5 5 0	6 6 0

HIGH CLASS 2ND HAND DEPT
THE ADAMS

MINEX

MADE AT OUR OWN



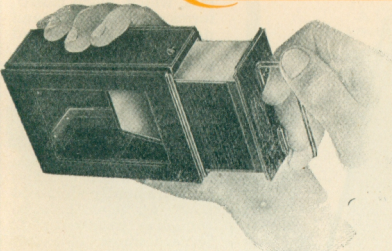
CAMERAS EXCHANGED
THE ADAMS

VERTO

LONDON FACTORIES

H. ADAMS & CO., LTD, 24, CHARING CROSS, W.C. 2.

THE ADAMS CHANGING BOXES



ADAMS AUTOMATIC CHANGING MAGAZINE.

An entirely new introduction adapted for plates and cut films.

Easily loaded, even in the dark. Small and compact.

Changes automatically in any position by an improved method.

When carrier is withdrawn next plate or film is in position for exposing. Can be fitted to all cameras adapted for double dark slides of standard register. Strongly constructed mainly of hardened metal and covered in best black morocco leather.

Prices for 12 cut films or 12 plates $3\frac{1}{2} \times 2\frac{1}{2}$ $\frac{1}{4}$ plate.
 £7 10 0 £8 10 0

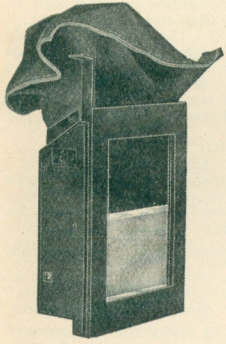
The Adams Bag Changing Boxes.

Best manufacture, covered in black morocco leather. Bags of special quality leather. Prices include sheaths.

12 plates— $4\frac{1}{4} \times 3\frac{1}{4}$, **90/-**; 5×4 , **100/-**;
 $6\frac{1}{2} \times 4\frac{3}{4}$, **120/-**

8 plates— $4\frac{1}{4} \times 3\frac{1}{4}$, **80/-**; $5\frac{1}{2} \times 3\frac{1}{2}$ or 5×4 , **100/-**;
 $6\frac{1}{2} \times 4\frac{3}{4}$, **120/-**

12 Cut Films, $3\frac{1}{2} \times 2\frac{1}{2}$, **90/-**; $\frac{1}{4}$ pl., **100/-**;
 5×4 , **110/-**; $\frac{1}{2}$ pl., **120/-**; exceedingly neat, light and small.



THE ADAMS DAYLIGHT LOADING SYSTEMS

The Adams Film Pack Adapter handsomely covered in morocco, with provision at back for draw-out shutter when out of use.

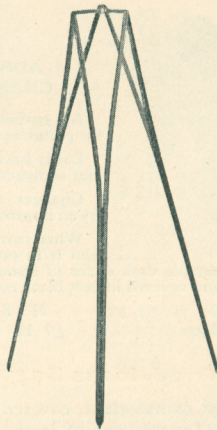
Film Pack Adapters	$3\frac{1}{2} \times 2\frac{1}{2}$	$\frac{1}{4}$ pl.	$\frac{1}{2}$ pl.	$5\frac{1}{2} \times 3\frac{1}{2}$	$\frac{1}{2}$ pl.
Ditto, Brass-bound Teak	25/-	30/-	35/-	35/-	40/-
Hooded Focussing Screens	40/-	50/-	60/-	60/-	75/-
Graflex Daylight Loading Roll Holder, fitted to Camera	20/-	22/6	25/-	25/-	30/-
Ditto, Brass bound, Tropical	80/-	80/-	97/6	97/6	—
	110/-	120/-	140/-	145/-	—

THE ADAMS DARK SLIDES

	Mahogany, black polished.	Double book form.	Brass-bound, Teak.	Double book form—Teak
$3\frac{1}{2} \times 2\frac{1}{2}$	18/6	30/-	30/-	37/6
$4\frac{1}{4} \times 3\frac{1}{4}$	20/-	32/6	32/6	40/-
5×4	25/-	37/6	37/6	45/-
9×12 c.m.				
$5\frac{1}{2} \times 3\frac{1}{2}$	25/-	37/6	37/6	45/-
$6\frac{1}{2} \times 4\frac{3}{4}$	32/6	45/-	45/-	50/-
10×15 c.m.				

All are interchangeable for using with our various cameras, and can be fitted to all cameras with double dark slides of standard register.

"ADAMS" WALKING STICK TRIPOD



A self-contained Tripod, which, when closed, forms a walking-stick, and **no part** has to be carried separately. Camera screw, and tripod head which forms camera support, **automatically** opens and closes itself, and is contained within itself. Is **instantly** erected, **no** fitting of parts being necessary, and it becomes **automatically** rigid and ready for use. Is rigid enough even for half-plate Reflex Camera. Nickelled top is 5½ in. across, and folds inside. The screw is also enclosed.

Other walking-stick tripods have failed owing to smallness of camera-supporting top and tops of legs not spreading out.

The tops of such stands are only about the size of half-a-crown. This is their point of weakness.

The success of the ADAMS Walking Stick Stand is owing to the top of each leg being splayed out to the extent of the outside dimensions of the tripod top, similarly to the best forms of ordinary field camera tripods.

Full height. Width of tripod head. Weight about PRICE.
36 ins. 5½ ins. 19 ozs. 65/-

Postage and Packing : Inland, 1/8 ; Abroad, 3/-. Can be made any height to order up to 6 ft. at 18/6 extra. Leather Slings for carrying on arm, 3/6.

Our New Pattern, specially designed for all kinds of Pocket or Folding Cameras, is the lightest, neatest and smallest Walking-Stick Tripod ever invented. Price 50/-.

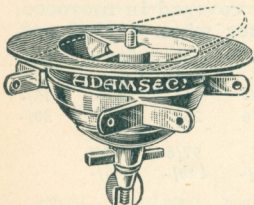
Adams & Co.'s "MINEX" TRIPOD. Best 3-fold rule joints, special brass bound, and 3 cross lay mahogany top. Very rigid and firm.

- No. 1 for quarter or ¼ MINEX, or ½-pl. Stand Cameras £3 3 0
- No. 2 for ½-pl. MINEX, or ¾-pl. Stand Cameras 4 4 0
- No. 3 for 12 × 10, or 15 × 12 Cameras 5 5 0

All Metal Revolving Turn-table Top, extremely useful and can be clamped at any point of view, instead of mahogany top, 45/- extra, all sizes.

If with Ball and Socket Top (see below) 75/- extra.

Minex Leather Tripod Cases, with handle, from 35/-



THE ADAMS BALL & SOCKET TRIPOD TOP

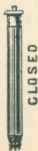
This is beautifully made in Aluminium and Silvered Gun Metal. Revolving and tilting adjustment, whilst camera is fixed on top. Extremely rigid.

Complete with Camera Screw 84/-

Adams & Co.'s "ZEPHYR" TRIPOD. Tubular metal, rigid, portable, light. Quickly erected without adjustment. Closed as quickly. Adjustable height. Regulation ¼ Whitworth screw supplied. Nos. 3, 7 and 8 are suitable for the Adams "VERTO" or "VESTA" Cameras.

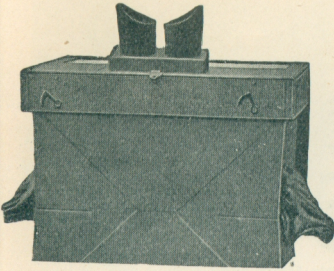
No.	Description	Closed.		Open.		Net Price.
		Inches.	Weight.	Inches.	Weight.	
No. 1	Brass tubular, circular legs	16	49	49	8/6	
" 2	Do. do. do.	11½	49	49	11/6	
" 3	Strong metal do. do.	12	49	49	15/6	
" 4	Do., square top	15	48	48	12/6	
" 7	*Aluminium, triangular legs	11½	48	48	35/-	
" 8	*Do. do. do.	13½	60	60	42/-	

*7 and 8 are our Specialities and best quality. Aluminium protected in working parts by brass guides, giving extra strength and rigidity. **Zephyr Leather Cases**, with handle, 10/6.

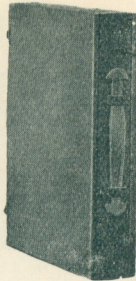


THE ADAMS PORTABLE DARK ROOM

A Changing Tent or Portable Dark Room, very convenient for loading and unloading Dark Slides, etc., and inserting Plates and Films into Developing Tanks, permitting development of Plates and Films in daylight. THE ADAMS PORTABLE DARK ROOM is constructed on practical lines, when open is quite rigid and is self contained, easily erected for use and, when closed, resembles a small Attaché Case. It is fitted with large non-actinic window and eye pieces so that the operator can see all the manipulations. Fitted with light-tight sleeves through which the hands are inserted and allows ample movement. Will be found most useful to travellers.



Open.



Closed.

Approximate Measurements:—

- | | | |
|--|---|-------|
| No. 1—Closed $2\frac{1}{2} \times 10 \times 13$. | Open $12\frac{1}{2} \times 10 \times 13$ | 70/- |
| No. 2—Closed $2\frac{1}{2} \times 12\frac{1}{2} \times 18$. | Open $16\frac{1}{2} \times 12\frac{1}{2} \times 18$ | 80/- |
| No. 3—Closed $3 \times 14 \times 20$. | Open $17 \times 14 \times 20$ | 100/- |

Postage and Packing, Inland, 2/6
Postage and Packing, Inland, 3/6
Postage and Packing, Inland, 4/6
No. 1, 7/6; No. 2, 10/6; and

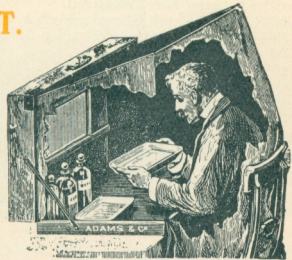
Panchromatic safe light windows can also be supplied: No. 3, 12/6 extra.

ADAMS 'CHALLENGE' DARK TENT. & Co.'s

This Tent, which is a complete Portable Dark Room, has been specially designed to stand rough usage, and is very strongly constructed of seasoned wood. The corners are iron bound; a strong handle and lock are supplied. Ample room for developing all size plates up to $8\frac{1}{2} \times 6\frac{1}{2}$; fitted with sliding windows giving ruby, orange or white light, and thoroughly ventilated, permitting development in perfect comfort. Indispensable for travellers abroad where it is difficult to obtain use of dark room.

Measures when closed $24 \times 17 \times 5$, price £8 10 0.
Large Size for plates up to 15×12 , price £12 10 0.

Window for panchromatic plates can be supplied 7/6 extra.

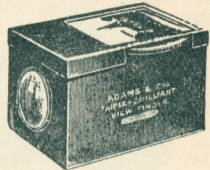


THE 'ADAMS' FINDER.

THE ONLY ACCURATE BRILLIANT FINDER.

	Size of View seen.	PRICES.
Size No. 1	$\frac{8}{16} \times \frac{13}{16}$	10/6
Size No. 2	$\frac{10}{16} \times \frac{14}{16}$	13/6
Size No. 3	$\frac{11}{16} \times \frac{14}{16}$	15/6

Can be made to correctly show the angle of view of any lens.



New Direct Vision Finder. constructed on the same optical principles as above. A real image finder adjustable angle of view and to correspond with any lens on a given plate, price £1 1s.

fitted to the Adams VERTO, VESTA, VAIDO and IDENTO Cameras, and cannot be supplied separately.

The Adams Identoscope

The most valuable fitment that can be attached to a hand camera. Is a real image brilliant view finder that at all times shows identical view lens produces upon plate. There is no other such Finder, as it automatically shows the action of the rising front. An accurate finder conveniently fitted to a camera is a great boon.

THE ADAMS STOP-WATCH EXPOSURE METER

Fitted with new speed Scales for lenses up to F/3.5 and Exposure Speeds up to 1/1000th of a second! The most Practical Exposure Meter ever introduced.

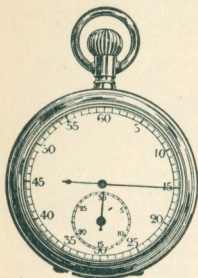


Fig. 1.

THE PERFECT METER.

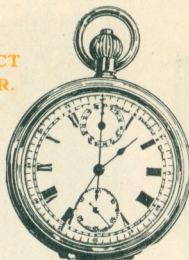


Fig. 2.

THE PERFECT WATCH.

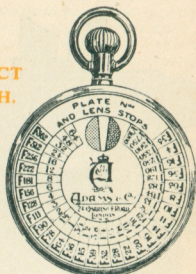


Fig. 3.

Adams & Co. were the first to introduce the STOP-WATCH Exposure Meters. THE THINNEST COMPLETE WATCH METER MADE.

The Adams Exposure Meter is the only accurate and simple method. Is a first-class Stop-Watch, with simple Exposure Meter arranged in back. Watch starts at zero and records from one-fifth of second to thirty minutes onwards. Large hand recording around outside edge is second hand, small hand minute hand. Useful for exposures of all kinds. Bromide and Gaslight Paper exposures. Enlarging and Copying. Watches are beautifully finished, being black oxidised.

The Stop-Watch Chronograph is the finest Swiss Chronograph procurable. Jewelled in 17 holes and a most perfect time-keeper.

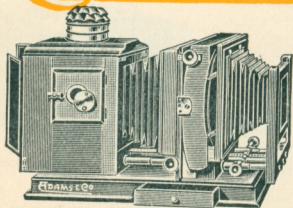
Figs. 1 and 3, Stop-Watch complete, 60/- Postage 9d.

Complete Watch Chronograph (as Figs. 2 and 3). 140/- Postage 9d.

THIN WAFER PATTERN.

It is circular, beautifully finished and only 2 ins. in diameter and 1/4th of an inch in thickness. The price includes Speed Card and a packet of Exposure Papers. Price 8/6 All Meters can be had with either "F" or "U.S." Stop Value Numbers.

THE ADAMS MINEX ENLARGER



THE Adams MINEX Enlarging Lantern is the result of long practical experience in the art of enlarging and combines all requirements of a perfectly practical instrument with our well-known high-class workmanship and material.

Front holding enlarging lens is fitted with our well-known quick and fine adjustment.

Stage carrying negative has every necessary movement, and is achieved by a new and distinctive device by which negative can be quickly adjusted to any desired position. Has rise and fall. Carrier revolves very

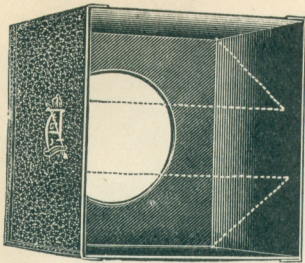
quickly for bringing negative from horizontal to vertical position.

The body is so arranged that any illuminant can be used, but wherever possible we recommend electric.

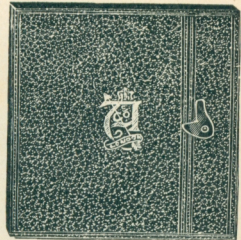
For negatives up to 4 1/4 x 3 1/4 ...	£30 0 0	...	6 1/2 x 4 3/4 ...	£45 0 0
For negatives up to 5 x 4 or 5 1/2 x 3 1/2 ...	£35 0 0	...	8 1/2 x 6 1/2 ...	£60 0 0

OTHER ENLARGING APPARATUS, AT ALL PRICES, IN STOCK.

THE ADAMS MINEX LENS HOOD



Designed,
Registered and
Introduced in
1910



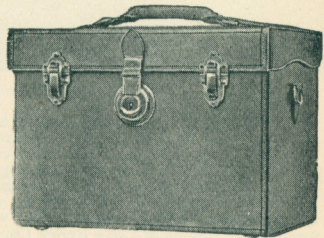
Smallest and neatest Lens Hood made, about **one-third** the thickness of most other Lens hoods. Easily attached and removed and can be made to fit any size lens. Its use is essential with all large aperture and Telephoto lenses, ensuring greater brilliancy, and preventing internal reflection; it erects automatically when fastener is released, can be used either with or without Iso light filters and made interchangeable. **Beware of cheap badly made spurious imitations, be sure it is an Adams.**

When ordering, give **exact diameter of front of lens mount.**

Up to 2 in., 21/- ; 2½ in., 25/- ; 3 in., 27/6 ; Larger, from 30/-.

THE ADAMS CAMERA CASES

- No. 1. Best quality canvas, thoroughly waterproof, and adjustable web sling strap.
- No. 2. Best Black morocco, stiffened, lined velvet, and sling strap.
- No. 3. Best quality, solid hide, black or buff, lined velvet, lock and key, and detachable adjustable best web strap.
- No. 4. Similar to Style 3, but made in best selected pigskin.
- No. 5. Air-tight enamelled steel, felt lined. Handle and lock.



	Style 1.	Style 2.	Style 3.	Style 4.	Style 5.
Model A, 3½ × 2½-pl., taking Camera and 3 Slides	33/-	70/-	80/-	105/-	95/-
Minex, ¼-pl., do. do.	35/6	75/-	85/-	115/-	100/-
" ¼-pl., do. do.	38/6	80/-	90/-	123/-	110/-
" ¾-pl., or 10 × 15 do. do.	45/-	100/-	115/-	140/-	125/-
Folding Minex, 3½ × 2½-pl., Camera & Film Pack Adapter	30/-	70/-	80/-	105/-	90/-
" ¼-pl., do. do.	35/-	75/-	85/-	115/-	95/-
" ¾-pl., do. do.	38/6	80/-	90/-	120/-	100/-
" ¾-pl., or 10 × 15 do. do.	44/-	90/-	105/-	135/-	115/-
Vesta, 3½ × 2½-pl., Camera, Screen, Film Adapter	15/6	37/-	45/-	67/-	60/-
Verto, ¼-pl., do. do.	17/-	40/-	50/-	70/-	65/-
Idento, ¼ & 5½ × 3½-pl., do. do.	18/6	45/-	55/-	75/-	75/-

Every quality, size and style of Case supplied.

Cases for lenses and light filter supplied and quoted for if desired.

All cases are carefully designed to accommodate the camera, and whatever supplementary lenses, changing systems, etc., are required in the same case, or extra cases designed specially to suit customers' requirements.

Crocodile.—We also supply cases made of real crocodile, prices on application; these are as handsome and strong as the highest class dressing cases which they resemble.

EVERYTHING PHOTOGRAPHIC SUPPLIED.

Adams Four-Ways Swing Front



Negative by Adolphe Abrahams, Esq., B.A.

ILLUSTRATION is good example of use of the Adams 4-ways Swing Front. Subjects situated at an angle can be brought into focus **without** having to stop lens down. It will be noticed foremost runner is correctly focussed, and rear men also. Such subject **must** be taken at high speed to prevent blur, and **must** be taken with large aperture to get properly exposed picture. As foremost man is so near Camera, and is sharply focussed, **without** our Swing Front the others would have been badly out of focus. The Adams 4-ways Swing Front is useful in many ways, and is shown in use in Fig. 3, page 105; can be fitted to all Adams & Co.'s Reflex Cameras, is equally efficient for bringing tall buildings into correct focus and alignment. Can also be fitted to most other good class Reflex Cameras.

PRICES: Morocco Covered Model, 55/- Tropical Pattern, 75/-.

Adams & Co.'s VIEW METER

Same Meter answers for variety of Lenses. Gives same angle of view as Lens in use.

The exact view that would be on the plate from the position of the operator may be at once seen without the trouble of erecting Camera.

Enables operator to tell at a glance the best lens to use to obtain most artistic rendering of subject, and spot where necessary to place Camera to embrace particular subject on plate.

Made in Aluminium, price 32/6.



We supply everything for Photography and allied Scientific Trades, including all goods advertised in the British Journal Almanac.

THE "ADAMS" Iso Screens, Light Filters, and Colour Screens

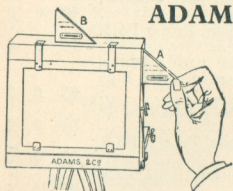
These Screens and Filters are cemented between thin Optical French Plate Glass, carefully tested and accurately corrected for colour values for the plates for which they are intended to be used. They are mounted also between optically-worked **HELGAR** Flats. These latter are specially recommended for all large aperture and Telephoto Lenses, and are fitted to the lens by means of perfectly adjusted Brass Mount, either to screw in or push on the lens.

	Diameter, 1-in.	1½-in.	2-in.	2½-in.	3-in.	3½-in.
Best Iso Screens and Filters in special fittings, 3 densities, ×3, ×5, ×10 ...	17/-	20/-	22/6	25/-	37/6	45/-
Do. in Helgar Optical Flats ...	45/-	50/-	65/-	87/-	120/-	190/-
Autochrome Agfa Lignose Colour Screens	18/6	20/-	22/-	24/-	31/-	35/-

Wellington, Ilford, Imperial and Kodak Screens at above prices, either thin plate or Helgar Flats and in our special perfect fitting mounts.

Snap Cases for above, finished in best Morocco and Velvet lined, for 10/- upwards, according to size.

ADAMS & CO.'S 'Challenge' Level



The only practical Level. When ordinary Level is placed on top of the Camera, it cannot be seen, being too high.

The "Challenge" Level is seen right through, and may be placed against *side* of Camera also against focussing screen to see it is truly perpendicular.

Small enough for vest pocket, and is most useful for all Cameras when used upon a stand.

Price 4/6 each, Postage 3d.

THE 'ADAMS' FOCUSSING MAGNIFIER.

A perfect achromatic Focussing Glass of high magnifying power, in best finished metal mount with locking ring so that user can adjust to suit own sight, extremely useful for accurate focussing. Price 27/6.

ADAMS PIN-HOLE LENS.

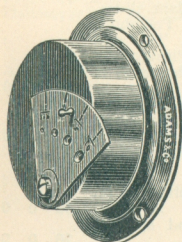
Owing to the modern prevalence of the cult of soft-focus artistic photography, we have re-introduced an improved model of our well-known Pin Hole Lens.

Having no fixed focus, the result a picture of any desired size, governed by the distance of the plate to the pin hole.

The whole of the picture is in equal soft focus, rendering perfect perspective and free from distortion, making its use invaluable for all artistic subjects, the artistic result is really wonderful and pleasing.

Very light, being made of Aluminium with five different apertures.

Price, complete with flange, 30/-



BETTER CAMERAS ARE BEYOND THE ART OF CAMERA MAKING.
THE LEADING REFLEX CAMERA

THE HONORS
MINEX
H. ADAMS & CO. LTD



THE LEADING POCKET CAMERA

THE HONORS
VESTA

24, CHURCH + R^o W.C. 2.

BEST SELECTION OF NEARLY NEW SECOND-HAND APPARATUS in LONDON. VERY LOW PRICES.

We carry at all times a very extensive stock of High-class Second-hand Cameras and Lenses of every description, and are prepared to take in part payment or purchase for cash any apparatus submitted to us for valuation.

All apparatus is carefully examined, overhauled, repaired, and put in good

working order AT OUR OWN WORKS before being sent out, and thus can be purchased with confidence

SPECIAL NOTICE.—In the event of second-hand outfits being sold upon receipt of order, cash will be returned in full, unless specially instructed to substitute.

REFLEX CAMERAS.

	<i>£ s. d.</i>
3½ × 2½ Adams "A" Minex de Luxe. 6 single metal slides, film pack adapter, 4½ in. Ross Combinable F5.5, 8 in. Single F11	42 10 0
4½ × 3½ Adams Videx. 3 double dark slides, film pack adapter, 6 in. Ross Compound Homo. F6.8	15 0 0
4½ × 3½ Adams "A" Minex de Luxe. 3 double dark slides, film pack adapter, 7½ in. Ross Xpres F4.5 in four-way swing front, solid hide case	50 0 0
5 × 4 Adams Videx. 3 double dark slides, film pack adapter, 6½ in. Protar F6.3, Single 11½ in. F12.5, solid hide case	18 0 0
5 × 4 Adams "A" Minex de Luxe. 3 double dark slides, film pack adapter, 6½ in. Ross Combinable F5.5, Single 11½ in. F11, K2 screen, solid hide case	55 0 0
6½ × 4½ Adams "A" Minex de Luxe. 3 double dark slides, Cooke lens F3.5 in four-way swing front, K2 screen, solid hide case	60 0 0
6½ × 4½ Adams Videx. 3 double dark slides, 8 in. Ross Zeiss Protar F6.3, 14 in. Single F12.5, solid hide case	20 0 0
6½ × 4½ Adams "A" Minex de Luxe. 3 double dark slides, without lens, solid hide case	45 0 0
4½ × 3½ Adsign de Luxe. 6½ in. Ross Xpres F4.5, 3 double dark slides and film pack adapter	22 10 0
4½ × 3½ Popular Pressman Aldis Butcher F3.4. 12 single slides, film pack adapter, stiff canvas case	17 10 0
3½ × 2½ N. and G. Folding Reflex 36 mm., Xpres F4.5, 6 double dark slides, film pack adapter, 10 in. Dallon Telephoto F5.6 in leather case, also hide case for camera and slides	50 0 0
4½ × 3½ Tropical Soho, 3 double dark slides, film pack adapter, 6 in. Pentac F2.9, best solid hide case, with canvas cover	47 10 0
10 × 15 cm. Adams "A" Tropical Minex de Luxe and 6 double dark slides, 8½ in. Ross Combinable F5.5, Single 14½ in. F11, 17 in. Dallon Telephoto F5.6, Adams cut 12 film changing box, film pack adapter, "A" and "K3" Wratten screens for Combinable, K3 screen for Dallon. Pigskin case for camera and changing box attached, pigskin case for slides and extras. A very complete outfit, absolutely new, cost £179 10s.	130 0 0
6½ × 4½ Adams "A" Minex de Luxe, 3 double dark slides, 10 in. Dallmeyer Pentac F2.9, 1 each × 3 and 5 K screens in Helgar Optical Flats, and black hide case, cost £130	90 0 0

FOLDING CAMERAS.

4½ × 3½ Adams Vaido. Minex focal plane shutter, 3 double dark slides, 6 in. Ross Zeiss Tessar F4.5	32 0 0
3½ × 2½ Adams Roll Film Vesta. Ross Tessar F4.5, compound shutter, Identoscope finder pigskin case	20 0 0
3½ × 2½ Adams "A" Vesta. Ross compound Homo. F6.8, direct view finder, film pack adapter	14 14 0
4½ × 3½ Adams F. P. Vesta. Minex focal plane shutter, 6 in. Ross Tessar F4.5, 6 single slides and hide case	15 0 0
4½ × 3½ Adams Idento. Ross compound Homo. F6.8, Identoscope finder, 3 double dark slides	8 8 0
Post Card Sanderson Camera. 6½ in. Aldis F6.3, Acme shutter, 3 double dark slides, film pack adapter, 2 leather cases	15 0 0
10 × 15 cm Sinclair "Una." 6 double dark slides, Ross compound Homo. F6.3, Perfect shutter, lens hood and K screens, hide case	30 0 0

Folding Cameras—continued.

	£	s.	d.
5 × 4 Adams Vaido. Minex focal plane shutter, Mackenzie adapter, 24 plate holders, Carl Zeiss Protar, 6½ in. F6.3. Single 11½ in. F6.3, solid hide case	35	0	0
4½ × 3½ Goerz Tenax Double Extension Dogmar F4.5, in Compur shutter, 3 single slides, film pack adapter, hide case	13	10	0

FIELD CAMERAS.

6½ × 4½ Triple Extension Brass Bound Victo Camera. 3 double dark slides (camera fitted for stereoscopic work), pair R.R. lenses F8, T.P. shutter, three-fold tripod	7	10	0
6½ × 4½ Adams Club. 3 double dark slides, 7 × 5 in. R.R. lens F8, leather case	5	10	0
8½ × 6½ Adams Club. 3 double dark slides, 9½ in. Goerz Anastigmat F7.7, turntable, three-fold tripod	20	0	0
15 × 12 Double Extension Camera. 18 in. Ross Portable Symmetrical F16, 2 double dark slides	17	0	0
8½ × 6½ Adams Club. 3 double dark slides, Zeiss Protar F6.3, 9½ in. single, 16 in. Sector shutter, three-fold tripod, leather case	25	0	0
12 × 10 Double Extension Square Bellows Camera. 3 double dark slides	7	10	0
8½ × 6½ Double Extension Camera. 3 double dark slides, three-fold tripod, canvas case	6	10	0
10 × 8 Double Extension Square Bellows All Brass Bound Camera. 6 double dark slides in two canvas cases, 3B Dallmeyer Portrait lens F3, 11 in. Focus Soho Studio shutter	45	0	0
Also a set of Zeiss Protar Lenses in compound shutter, 11½ in., 14 in., 16½ in., F7, one each A, B, C, and G, B glass filters, 2½ in. K3, flat, all complete in hide case. This is a very suitable set of lenses to use with the 10 × 8 outfit listed above	35	0	0
12 × 10 Walnut Studio Camera and 1 single dark slide, repeating back and cabinet dark slide fitted with No. 2 Ross Portrait lens	18	0	0

LENSES.

5½ in. Ross Compound Homocentric F6.8, in Compur shutter	6	10	0
12 in. Ross Telecentric F6.3, metal lens hood	7	10	0
10 in. Carl Zeiss Tessar F4.5, ordinary mount	14	0	0
16 in. Series VI Cooke, Soft Focus F5.6, Portrait Lens	16	0	0
13 in. Ross Telecentric F6.8	8	0	0
17 in. Ross Telecentric F6.8, in leather case	9	10	0
6 in. Voigtlander Heliar F4.5 in Compur shutter	7	0	0
6 in. Xenar Anastigmat F4.5 in focussing mount	4	4	0
6½ in. Cooke Series II, F4.5, standard mount	4	4	0
Dallmeyer Adon Telephoto Lens	2	2	0
Cooke-Telar 13½ in. Focus F7, in compound shutter	4	10	0
9½ Ross Goerz Anastigmat F7.7, in Bausch & Lomb shutter	6	10	0
8½ × 6½ Lancers W.A., R.R., F16	2	10	0
7½ Series III, Cooke F6.3, in Unicum shutter	4	10	0
8½ in. Zeiss Tessar F4.5, in Koilos shutter	10	0	0
6 in. Port-Land Soft Focus F4.5, K1 screen	4	10	0
Dallmeyer 9 in. Soft Focus F 4.5	6	10	0

ENLARGERS, ETC.

Adams Minex Enlarger for 5 × 4. 6½ in. Condenser	10	10	0
Optimus Enlarging Lantern for ½ plate, 8 in. Condenser	8	8	0
Adams Optical Lantern, mahogany body, metal lined, 3 drawn brass tubes, Dallmeyer No. 3 large aperture lens	25	0	0
4½ × 3½ Abbeydale Enlarger, 5½ in. Condenser, Aldis F8, Anastigmat lens	8	8	0
6½ × 4½ Record Enlarger, chain and sprocket focussing, Picture Composing Carrier, 8½ in. Condenser	20	0	0
5 × 4 Coronet Enlarger, 7 in. Condenser, chain and sprocket focussing	7	0	0

**Specially appointed Agents for highest class amateur
Cinematograph Apparatus and Wireless Outfits.**

FULL PARTICULARS ON APPLICATION.

EXTENDED TERMS.

Having had many requests from customers wishing to purchase on extended payment terms, and as this system has become so general and adopted by the leading firms, we have decided to supply any apparatus on the deferred payment system. Write stating your requirements, and we will be happy to send order form and full particulars.

EVERY KIND OF DEVELOPING, PRINTING and ENLARGING.

ALL OUR WORK IS OF THE HIGHEST QUALITY THAT EXPERIENCE,
EXPERT KNOWLEDGE AND PERSONAL CARE CAN PRODUCE.

ENLARGEMENTS IN BROMIDE, TONED BROMIDE, CARBON AND PLATINOTYPE, BROMOIL, Etc.

We shall be pleased at all times to advise customers which negatives will make the most satisfactory enlargements and which process will give the most satisfactory results.

Adams & Co. speciality Sepia Photogravure Enlargement, with large plate-marked margin on cream double-weight paper. Lantern Slides in black or warm tones from customers' own negatives or prints.

PRICE LIST of Enlargements, Developing and Printing on application.

IMPORTANT.

OUR apparatus being high-class instruments produced by highly skilled labour, and manufactured throughout at our London factories under a staff of technical experts, they bear a smaller percentage of profit than usual, and we therefore have no authorized agents. We only profess to make and supply the Public direct.

Full remittance should accompany order, or we will draw against documents through bankers in the usual manner.

As goods are packed with utmost care, we are not responsible for damage during transit, but goods are insured against damage when desirable.

Correspondance en Français si on le désire.

THE FIRM IS STILL UNDER THE SAME PERSONAL SUPERVISION AS FOR THE PAST 30 YEARS.

Cameras Constructed and Experimental Work carried out to customers' specifications.

Our long practical experience is at Customers' disposal in selection of
Most Suitable Apparatus and Lenses upon receipt of requirements.

Colonial and Foreign Orders. Every possible care is paid to customers' requirements and apparatus is thoroughly tested and examined before despatch. Post parcels can be sent C.O.D. through the Postal authorities to a great many countries and we are always prepared to use this system where it applies. Full particulars can be obtained from the postal authorities.

Our mail order department will give you the same satisfaction in ordering goods from us, as would have resulted in a personal call to our showrooms.

A. ADAMS & Co., Ltd. NEAR LEICESTER SQ. TUBE
24, CHARING + RD. LONDON. W.C. 2.