

ENSIGN FILM



IT'S THE PRINT
THAT COUNTS
ENSIGN FILM
GIVES YOU THE
TRUEST PICTURES

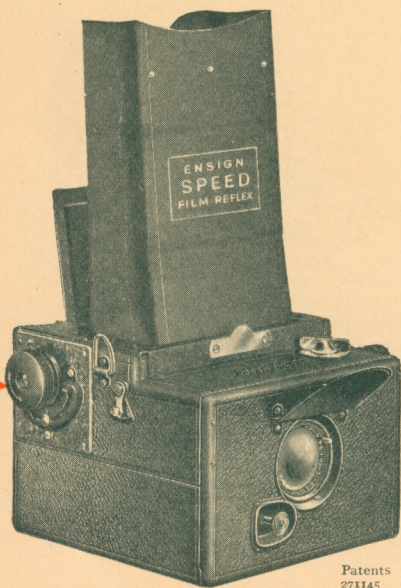
Made in England

HOUGHTON-BUTCHER (Great Britain) LTD.
ENSIGN HOUSE, 88-89 HIGH HOLBORN, LONDON, W.C.1

Telephones: HOLborn 6900 (9 lines) Telegrams: "Bromide, Phone, London"
Glasgow, Leeds, Manchester, Nottingham, Swansea, Calcutta and Bombay

A REMARKABLE ENSIGN SPEED FILM REFLEX WITH FOCAL PLANE SHUTTER

For 2¼" × 3¼" (6 × 9 cm.) roll films.



Patents
271145
280352

ONE TURN OF THIS KNOB
GIVES YOU A RANGE OF
SPEEDS UP TO 1/500th
OF A SECOND

Fitted with the
FAMOUS
ALDIS-BUTCHER
f/4.5 and *f/3.4*
GUARANTEED
ANASTIGMATS

THE reflex camera has hitherto been more or less the exclusive preserve of the plate photographer, and its advantages have been somewhat discounted by the weight and bulk necessitated by its design and construction, and more especially because it requires the use of glass plates.

The Roll Film Reflex, with fast focal plane shutter, has at last made

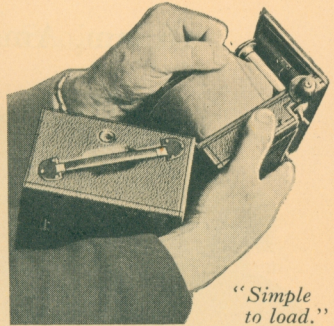
AN ENSIGN PRODUCT

ACHIEVEMENT

its appearance in the Ensign Speed Film Reflex, and this remarkable new camera combines all the natural advantages of the reflex camera, with the handiness, portability and lightness of the roll film.

CONSTRUCTIONAL DETAILS

THE CAMERA. Made throughout of mahogany, covered with finest quality fine grain morocco leather, reinforced with metal, and incorporating the film registering device (Patent 280352), which ensures flatness of the film comparable to that of a glass plate. The large top leather hood makes focussing easy in any light. The mirror is optically worked and surface silvered. Fitted with leather-covered spring handle. Exceptionally simple to load and manipulate. No loose parts.

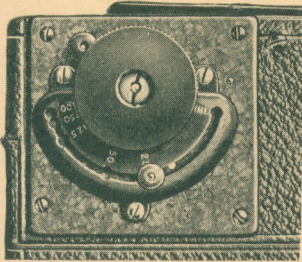


*"Simple
to load."*

THE SHUTTER. Constructed on the self-capping variable slit principle, and gives a range of speeds of 1/25, 1/50, 1/125, 1/250, 1/500 sec. and Time.

No more movements are required to set the shutter than with an ordinary folding camera—you simply set your speed by a knob, wind up the shutter, and make the exposure.

THE LENS EQUIPMENT. The standard equipments are the Aldis-Butcher $f/4.5$ and $f/3.4$ anastigmats. They are personally guaranteed by Mr. H. C. Aldis, and each is accompanied by a photographic test chart showing the absolutely perfect covering power and definition obtained. These lenses, which are made specially for this camera, are a very real optical achievement.



"Set your shutter by a knob."

PRICES

Aldis-Butcher Anastigmat	$f/4.5$	£10	10	0
Aldis-Butcher	$f/3.4$	12	12	0
Ross Xpres	$f/4.5$	14	10	0
Zeiss Tessar	$f/4.5$	14	10	0

Write for de-luxe leaflet No. 691.

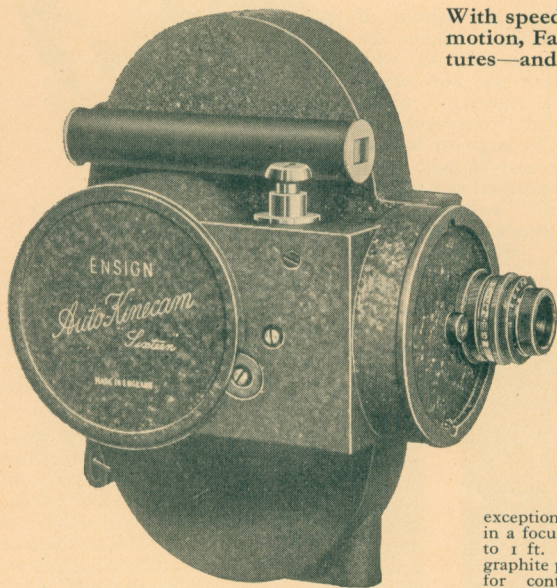
AN ENSIGN PRODUCT

THE NEW ENSIGN 16 mm.

**ENSIGN
"AUTO-KINECAM"**

16 mm. Amateur Cine Camera

With speeds for Normal, Slow-motion, Fast-motion Trick pictures—and $f/2.6$ Anastigmat.



A definite step forward in the design, construction and value of amateur cinematograph cameras.

The Ensign "Auto-kinecam" has all the individual features of cine cameras selling at a far higher price, and many characteristics of its own, making it unquestionably the finest value in the world, and a tribute to British craftsmanship. Made throughout from die castings. Popular shape, fits snugly into the face. Fitted with Cinar $f/2.6$ anastigmat, giving

exceptional definition, and mounted in a focussing mount for use down to 1 ft. Strong clockwork motor, graphite packed, giving ample power for continuous running. Conveniently placed footage indicator shows the exact amount of film used.

View-finder giving an exceptionally brilliant image. Hand turn movement, strong carrying handle. Daylight loading of extreme simplicity.

PRICE

Complete with one each 100 ft. and 50 ft. empty spools, and "Cinar" $f/2.6$ anastigmat, in best brown English hide, velvet-lined carrying case.

25 Guineas

Write for de-luxe brochure BJ/1929.

AN ENSIGN PRODUCT

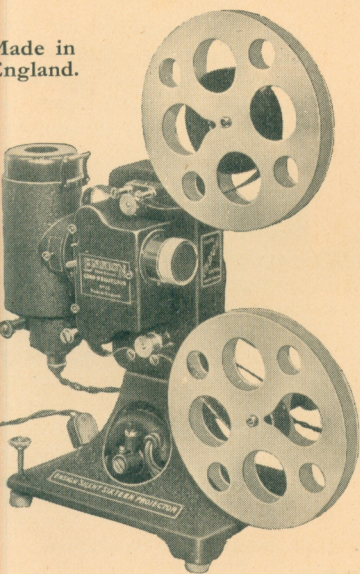
CINE CAMERA & PROJECTOR

ENSIGN

"SILENT SIXTEEN"

16 mm. Amateur Cine Projector

Made in
England.



With $f/1.8$ Projection Lens. For use on all voltages. A silent projector giving a rock-steady and brilliantly illuminated picture.

The Ensign "Silent Sixteen" projects a brilliant and rock-steady picture with a minimum of noise and supervision.

A patented shutter of novel design gives a rock-steady flickerless picture.

The concentrated filament lamp, the special condenser and $f/1.8$ projection lens provide a brilliantly illuminated 3-4 ft. picture at 15-20 ft. from the screen, although the light power will allow a picture at 40 ft. of correspondingly increased size.

The motor is of first-class design and power and a geared rewind is provided.

Threading the film and general manipulation is exceptionally simple.

PRICE

Complete with empty 400 ft. spool, 60 volt (100 [watt]) lamp, resistance-variable from 100-250 volts—with leads, adapters and plugs, oil bottle and are "take-up" spring. Contained in a strong wood transport box with partitions for accessories and spare spools.

25 Guineas

Write for de-luxe brochure B.J./1929.

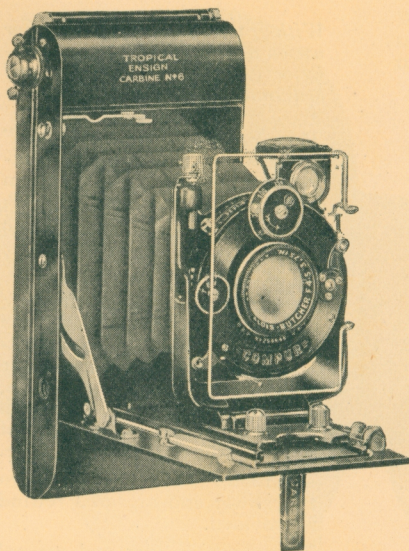
AN ENSIGN PRODUCT

ENSIGN CAMERAS

ENSIGN CARBINE No. 6

TROPICAL MODEL

For $2\frac{1}{4}'' \times 3\frac{1}{4}''$ (6×9 cm.) roll films.



Designed especially for continuous hard wear—for explorers, climbers, big game hunters and pioneers and for ordinary use under exceptional climatic conditions.

Brass body finished Florentine bronze, fitted with specially proofed double-lined Russia leather bellows, bolted back and front. Hinged spool pins, silent winder, very easy loading. Cast front with rising movement. Direct vision wire type viewfinder with back sighter plate, also reflex type. Radial focusing to 4 ft. Each camera supplied in chamois leather bag.

PRICES

Aldis Uno Anastigmat	<i>f</i> /7·7	6-speed shutter	£7 2 6
Aldis Uno	..	<i>f</i> /4·5 Compur	8 17 6
Aldis-Butcher	..	<i>f</i> /4·5	10 10 0
Ross Xpres	..	<i>f</i> /4·5	12 7 6
Zeiss Tessar	..	<i>f</i> /4·5	11 2 6

With back fitted to take single metal plate holders .. extra 12/6

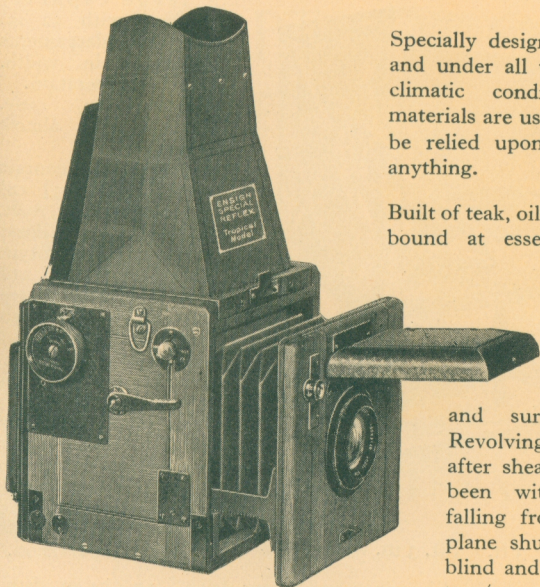
Write for catalogue No. 720.

AN ENSIGN PRODUCT

FOR ANY CLIME

ENSIGN SPECIAL TROPICAL REFLEX

For plates, film packs and cut films $3\frac{1}{2}'' \times 2\frac{1}{2}''$ and $\frac{1}{4}$ -plate.



Specially designed for use in Tropics and under all trying atmospheric and climatic conditions. Only selected materials are used, and the camera may be relied upon to stand up well to anything.

Built of teak, oiled and waxed and brass bound at essential points. Specially proofed large focusing hood and bellows of Russia leather. Rack and pinion focussing.

Optically worked and surface silvered mirror. Revolving back, can be operated after sheath of plate holder has been withdrawn. Rising and falling front movement. Focal plane shutter with self-capping blind and giving speeds of $1/15$ to $1/1000$ second.

Size (closed) $3\frac{1}{2} \times 2\frac{1}{2} - 6 \times 6\frac{1}{2} - 6\frac{1}{4}$ in. Weight 3 lb. 5 oz.
 $\frac{1}{4}$ -plate $- 6\frac{1}{4} \times 6\frac{1}{4} \times 7$ 3 .. 12 ..

EQUIPMENT. Includes three single Florentine bronze plate holders with nameplate fitted with detachable cut-film sheaths, back focussing screen with deep leather-covered hood, neck strap.

PRICES

			$3\frac{1}{2} \times 2\frac{1}{2}$	$\frac{1}{4}$ -plate
Aldis-Butcher Anastig.	f/4.5	5 in.	£18 0 0	6 in. £19 0 0
Aldis-Butcher	" f/3.4	5 $\frac{1}{4}$ "	21 0 0	7 " 22 0 0
Ross Xpres	f/4.5	5 "	22 0 0	6 " 23 15 0
Zeiss Tessar	f/4.5	5 $\frac{1}{4}$ "	22 5 0	6 " 23 15 0

Write for catalogue No. 720.

