

*Give a*

KODAK

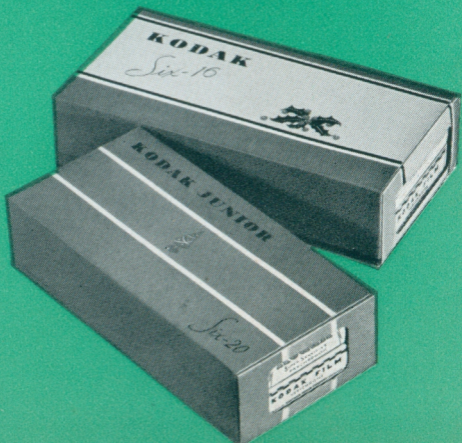


*Start the Picture Record  
Christmas Day*

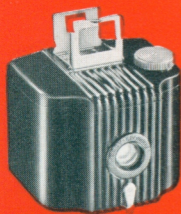
GIVE a Kodak and give happiness—not only for Christmas Day, but for months and years to follow. Everyone—from children to older folks—enjoys a Kodak and the fine pictures it takes. And since Kodaks now work nights, pictures after dark with photo bulbs add greatly to the fun.

We'll be glad to have you stop at the store and look over any of the items in this booklet.

Many of the cameras come with gay holiday wrappings—and some may be had in handsome boxes with two rolls of Kodak Film.



# INEXPENSIVE CAMERAS



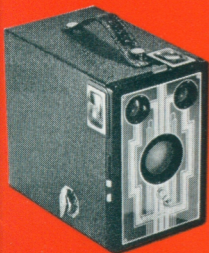
## BABY BROWNIE

The trim little molded Baby Brownie slips easily into a youngster's stocking—and makes an instant hit on Christmas morning. Takes dandy  $1\frac{5}{8}$ " x  $2\frac{1}{2}$ " pictures (8 on a roll). Glossy-black finish . . . compact . . . easy to use. Has eye-level finder. \$1.



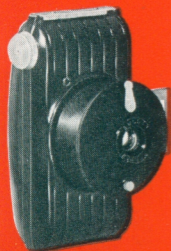
## BROWNIE JUNIORS

A better box camera for just a little more money. Brownie Juniors have two extra large, ground-glass finders, tested Eastman Meniscus lens, and Rotary shutter. Six-16 Brownie Junior,  $2\frac{1}{2}$ " x  $4\frac{1}{4}$ " pictures, is \$2.75; the Six-20 ( $2\frac{1}{4}$ " x  $3\frac{1}{4}$ " ), \$2.25.



## SIX-16 AND SIX-20 BROWNIES

These smart Eastman cameras lead the field for box camera values. They have special Diway lens, which by one easy adjustment insures sharp focus for both near and distant subjects. Highly crowned, extra large finders. Six-16 Brownie ( $2\frac{1}{2}$ " x  $4\frac{1}{4}$ " ), \$3.75. Six-20 ( $2\frac{1}{4}$ " x  $3\frac{1}{4}$ " ), \$3.



## BULLET CAMERA

New, and already a sensation—a distinct novelty for Christmas giving. Black, molded body . . . ingenious spiral lens mount . . . eye-level finder . . . removable back . . . adjustment for snapshots or "bulb" exposures . . . focus is fixed. Takes 8 pictures ( $1\frac{5}{8}$ " x  $2\frac{1}{2}$ " ) on a roll. Costs but \$2.85.

# MEDIUM-PRICED MODELS

## JIFFY KODAK V.P.

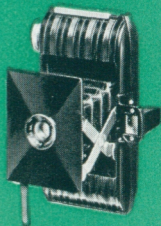
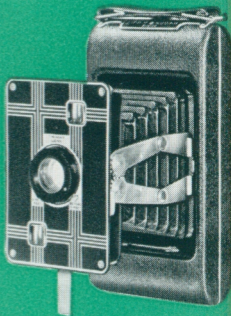
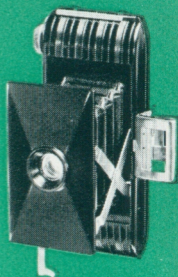
A Kodak for \$5—and a lot for the money. Its light-weight body is of black, molded material. Has folding, direct-view finder . . . button-activated "pop-out" front . . . Kodak Doublet lens . . . Eastman shutter. Jiffy Kodak V.P. uses 127 Kodak Film, gets 8 pictures— $1\frac{5}{8}$ " x  $2\frac{1}{2}$ "—per roll.

## JIFFY KODAKS SIX-16 AND SIX-20

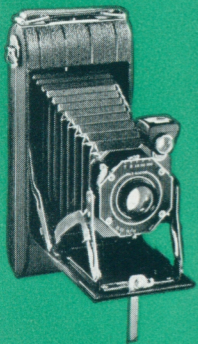
One touch of a button and Jiffy Kodak springs into picture-making position. Another touch of a button and the picture is taken. Jiffy Kodak is a beautifully designed camera—finished in metals and enamels, and covered in black morocco grain. Adjustable Twin-dar lens. The Six-16 ( $2\frac{1}{2}$ " x  $4\frac{1}{4}$ " ) is \$9; Six-20 ( $2\frac{1}{4}$ " x  $3\frac{1}{4}$ " ), \$8.

## KODAK BANTAMS

Small as the palm of your hand—yet, through a new idea in photo finishing methods, leads to pictures larger than itself. "Pop-out" front . . . molded case . . . automatic exposure centering device . . . fixed focus . . . fixed shutter speed. Two models: one with f.6.3 lens, \$9.75; the other with Doublet lens, \$5.75.

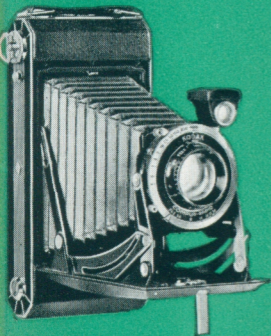


# THAT ARE LEADERS ALL



## KODAK JUNIORS

Noteworthy among the Kodak Junior models is the Six-20 (2¼" x 3¼") with Kodak Anastigmat f.6.3 lens for \$13.50—an extraordinary "buy." The companion model, Kodak Junior Six-16 (2½" x 4¼") with f.6.3 lens, is priced at \$15.50. The f.6.3 Juniors have eye-level finders as well as those of the waist-level type. All models are of strictly modern design, and have self-erecting front. With Kodak Doublet lens, Kodak Junior Six-16 is \$12; similarly equipped, the Six-20 is \$10.



## KODAKS SIX-16 AND SIX-20

Finest of Eastman's conventional style cameras. Precisely, compactly constructed—marvelously smooth in operation. Smart enameled sides . . . automatic spring-out fronts. Three lens equipments: Kodak Anastigmat f.4.5 or f.6.3, or Kodak Doublet. The f.4.5 models carry a Compur shutter (1/400 Compur-Rapid on the Six-16) with built-in self-timer.

Kodak Six-16 (2½" x 4¼"), f.4.5, is \$40; f.6.3, \$20; Doublet, \$16. The Six-20 (2¼" x 3¼"), f.4.5, is \$37.50; f.6.3, \$17.50; Doublet, \$14.

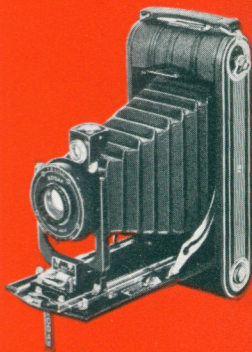
# "BIG PICTURE" KODAKS—

## 3A KODAK SERIES II

The preference of many is for a ruggedly made camera that takes large-sized pictures. The 3A Kodak, Series II, (picture size,  $3\frac{1}{4}'' \times 5\frac{1}{2}''$ ) is their camera.

With its side panels brilliantly finished in black enamel and chromium, and its smartly creased cowhide covering, it's thoroughly modern in appearance. The lens is a Kodak Anastigmat f.6.3—the shutter a reliable Diodak.

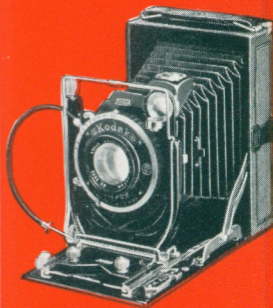
Other features are push-button bed release . . . hinged back . . . thumb-tip focusing lever . . . brilliant reflecting finder . . . metal covered ruby window. And the price is but \$39.50.



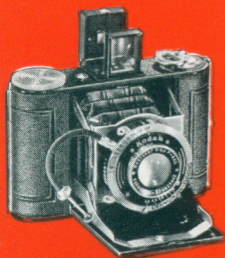
## KODAK RECOMARS

Here are unusually appropriate cameras for those who make a serious hobby of picture-taking. Kodak Recomars are adaptable to a variety of negative materials—film packs, cut film, and plates. They are fitted with Kodak Anastigmat f.4.5 lens and Compur shutter with built-in self timer. They have double extension bellows and bed, ground glass focusing back, wire frame finder.

Kodak Recomar 33 (with pack kit  $3\frac{1}{4}'' \times 4\frac{1}{4}''$ ), \$63. Kodak Recomar 18 (pack  $2\frac{1}{4}'' \times 3\frac{1}{4}''$ ), \$54.

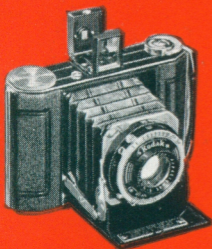


# UNIQUE "MINIATURES".



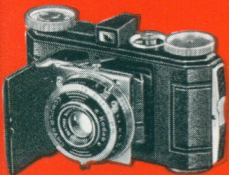
## **KODAK VOLLEDA**

A medium priced, efficient miniature camera that makes 16 ( $1\frac{3}{16}$ " x  $1\frac{9}{16}$ " ) exposures on a No. 127 roll—capable of generous enlargement. Comes with f.3.5 anastigmat lens and 1/500 Compur-Rapid shutter. Price, \$44.50.



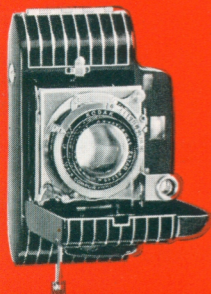
## **KODAK DUO SIX-20**

Really a miniature camera, but takes album-sized pictures— $1\frac{5}{8}$ " x  $2\frac{1}{4}$ "—16 on a roll (enlarge beautifully, if desired). Kodak Anastigmat f.3.5 lens, 1/500 Compur-Rapid shutter, depth-of-focus scale. Sells for \$57.50.



## **KODAK RETINA**

Takes 36 exposures ( $1$ " x  $1\frac{1}{2}$ " ), readily enlarged, on a magazine roll. Has f.3.5 lens, 1/500 Compur-Rapid shutter. May be used for pictures in full color with the new Kodachrome Film. Price, \$57.50.



## **KODAK BANTAM SPECIAL**

A new kind of miniature "still" camera—streamlined . . . beautiful . . . efficient. Lightning fast EKTAR f.2 lens, 1/500 Compur-Rapid shutter. Military-Type, built-in range finder, coupled with focusing mount. Die-cast, machined aluminum body. Takes 8 exposures on a roll of Kodak Panatomic, Super X, or Kodachrome (for full-color pictures) Film. A truly remarkable camera for \$110. We urge you to see it.

# FOR MOVIES IN BLACK

## MAGAZINE CINÉ-KODAK

Any Eastman home movie camera is a fine family gift. Here's the best—Magazine Ciné-Kodak for 16 mm. movies. Loads in 3 seconds. You don't touch the film. It comes in a magazine, which you merely slip into place and close the camera cover—then shoot. Effortless loading is but one of many features of this remarkable new camera. With fast f.1.9 lens, \$125; including carrying case, \$137.50.

## CINÉ-KODAK "K"

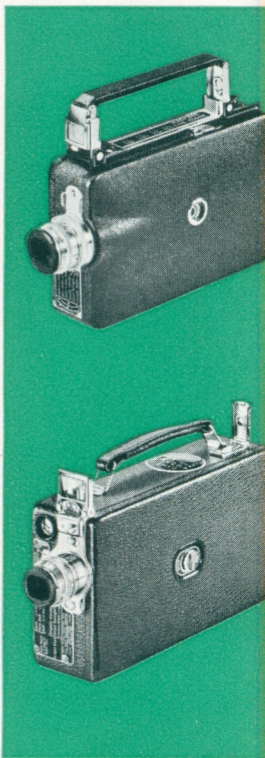
Another Eastman 16 mm. home movie camera triumph. Complete—yet simple to use. Gets brilliant movies at the touch of a button. Loads with 100 feet of film. Like all Eastman home movie cameras, takes beautiful full color Kodachrome movies, as well as those in black-and-white. With f.1.9 lens, \$112.50; including carrying case, \$125.

## KODASCOPE "L"

"Tailor-made" projection at its best. The "L" is absolutely the last word in projectors. May be used with a variety of lenses and lamps. Without lens or lamp, \$165.

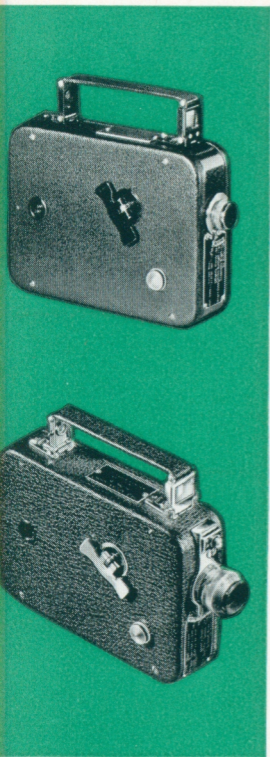
## KODASCOPE "E"

A moderately-priced 16 mm. projector. Many latest refinements. Available with any of 5 lenses, and takes 400-, 500- or 750-watt lamps. Without lens or lamp, \$39.50.





# AND-WHITE OR FULL COLOR



## **CINÉ-KODAK EIGHT, MODEL 20**

Besides being inexpensive to buy, this camera (for 8 mm. movies) is economical to use. Takes 20 or 30 average-length scenes on a \$2.25 roll. For black-and-white or Kodachrome. With Kodak Anastigmat f.3.5 lens, \$34.50.

## **CINÉ-KODAK EIGHT, MODEL 25**

Except for the speedier f.2.7 Kodak Anastigmat lens, this camera is the same as the model 20, above. The price is \$45.

## **CINÉ-KODAK EIGHT, MODEL 60**

Fitted with an "ultra-fast" Kodak Anastigmat f.1.9 lens, interchangeable with an f.4.5, 1½-inch telephoto lens (\$37.50 extra), the Model 60 is finished in two-toned gray cowhide and brilliant chromium. \$91.50 with case. For both black-and-white and Kodachrome movies, of course.

## **KODASCOPE EIGHT, MODEL 20**

For use on 60-cycle, 105 to 125-volt A.C. lines. \$26.

## **KODASCOPE EIGHT, MODEL 40**

Operates on A.C. or D.C. lines. With 200-watt lamp—\$39.

## **KODASCOPE EIGHT, MODEL 80**

For either A.C. or D.C. Super-brilliant 300-watt lamp. Highly efficient cooling system. Unusually quiet. \$97.50, with case.

# PHOTO ACCESSORIES TO

## **KODAFLECTOR (Right)**

Improves greatly the efficiency of photo bulbs. Complete, \$5.

## **KODAK HANDY**

### **REFLECTOR, MODEL B**

Simple, effective cardboard reflectors; special holders. 2 for 25c.

## **KODAK POCKET RANGE FINDER**

Eliminates the guess-work with any folding camera. \$7.

## **KODAK METAL TRIPODS**

Fit any standard tripod socket. Legs are of light, rigid telescoping brass tubing. 3 models—one as low as \$2.75.

## **KODAPOD AND OPTIPOD**

For standard tripod sockets. May be attached to any handy object to hold the camera steady during exposure. Kodapod, \$1.75; Optipod, \$1.25.

## **KODAK SELF TIMER**

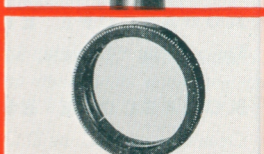
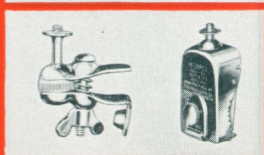
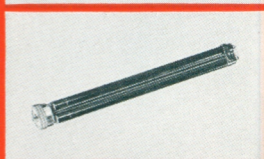
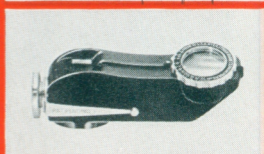
For any camera with a cable release. Clicks the shutter automatically. Allows camerist to take his own picture. \$1.25.

## **LENS ATTACHMENTS**

Fit over the regular camera lens to give unusual results. Kodak Portrait Attachment, 50c and 75c. Other types of attachments are as low as \$1.

## **"HOW TO MAKE GOOD PICTURES"**

Latest, revised edition of this helpful publication. Hundreds of pictures, diagrams. Price 50c.



# DELIGHT THE CAMERIST



## DARKROOM OUTFITS

Supplies for developing and printing at home. Kodak Darkroom Outfit No. 1 is \$8.75; No. 2, \$3.25.



## KODAK HOME ENLARGER

Will take negatives from half-vest-pocket size up to and including  $3\frac{1}{4} \times 4\frac{1}{4}$ -inch and  $9 \times 12$ -centimeter. A "buy" at \$16.50.



## VELOX WATER COLORS

12 shades coated on paper stamps. Rapidly soluble in water to produce effects desired. In enamel case with 3 brushes, \$1.



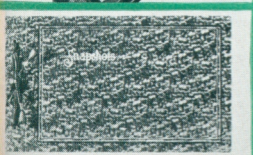
## KODAK OIL COLORS

Outfit, at \$3.75, includes 15 tubes of color, all necessary accessories and instruction book. Also an 8-tube set for \$2.



## KODAK HAND STRAP

Can be attached to any camera having standard tripod socket. Fastens to camera by means of swivel, knurled knob. Price 50c.



## EASTMAN ALBUMS

Attractive . . . durable . . . easy to use. Many styles, in a wide price range. Brighton Albums (left) are 75c to \$1.75.



## "ELEMENTARY PHOTOGRAPHY"

A complete course in photography for \$1. Takes the reader—through a series of practical exercises—from the rudiments to the more advanced phases. Has 253 pages.

Make the Gift  
Complete with  
**KODAK FILM**

VERICHROME is the favorite all-round film. Double-coated to double-guard snapshot success. Comes in rolls or packs.

"SS" PAN provides the extra speed so desirable for dull-day picture-taking—or for night shots with Mazda photo bulbs. Fully panchromatic.

PANATOMIC gives bigger, brighter enlargements with less grain. Very popular with miniature camera users. Completely color sensitive and amply fast for normal needs.

KODACHROME is Eastman's latest development. Allows picture making in full color with Kodak Bantam Special; Kodak Retina and similar miniature still cameras. The colored images may be viewed in their original size, by transmitted light, or mounted in slides for large-size home screen projection.



**The Photoart House**  
413 State Street  
MADISON, WISCONSIN