



**HAWK-EYE  
CAMERAS**

HAWK-EYE  
CAMERAS  
AND SUPPLIES



19 11

BLAIR CAMERA DIVISION  
EASTMAN KODAK COMPANY  
ROCHESTER, NEW YORK



## A SUMMERS DAY



**H**AVE you enjoyed the pleasure of resting at mid-day under the spreading branches of the great elms, satisfied, soothed, entranced anew by the tranquil grandeur of the scene? A panorama is before you, beautiful as a delicately pictured scene of fairy-land. Watching the sky you behold the wide ethereal expanse paling into tender blue whereon light clouds drift lazily, like the falling blossoms that float from cherry trees in spring. There is a wondrous hush of consecrated calm charming the silence into deeper ecstasy and you are satisfied with the perfect fairness of the day. You revel in the luxury of silence and solitude, in the hallowed peace of the warm sunlit air, and there is no disturbing element in the singing of the birds, in the whispering of the zephyr or in the babbling of the running brook. You hear from afar the gay ripple of children's laughter bringing to your mind the soft murmurs of home affection, and you know that they are playing on a green hillock that rises up like a shining emerald from the darker foliage of the surrounding trees.

This perfect day has so impressed you that you want to make a memory record of it and give your friends a good idea of the scene. To do this a Hawk-Eye Camera will be your truest companion, enabling you to fill an album with beautiful pictures of your happiest days.



## Shutter Equipment

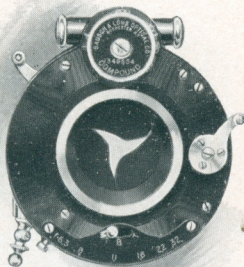
### B. & L. COMPOUND SHUTTER

**A**N automatic and setting shutter combined, neither adjustment interfering with the other.

Automatic for bulb and time while speeds from  $\frac{1}{250}$  to one second are automatically given when the shutter is set.

The steel segments forming the shutter leaves are star-shaped, giving even illumination over the entire field during the exposure.

The shutter is made of aluminum, beautifully finished, accurate, compact, speedy and dust-proof, particularly well adapted for use on hand cameras.

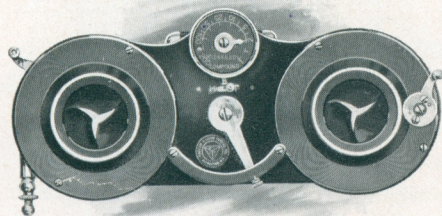


### B. & L. STEREO COMPOUND SHUTTER

**T**HIS shutter is practically a combination of two regular shutters described above. To arrange for instantaneous speeds it is necessary to set the lever, while time

and bulb exposures are made automatically, the various adjustments not interfering with each other on account of a safety locking device.

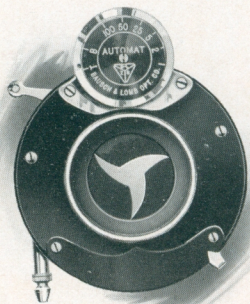
The steel segments of the shutter leaves form star-shaped openings, giving even illumination during the exposure. The mechanism is highly accurate and reliable.





## Shutter Equipment

### B. & L. AUTOMATIC SHUTTER



ALL the latest and best ideas are embodied in the B. & L. Automatic Shutter. It is of the highest grade, strictly automatic, perfectly balanced and accurately regulated as to variation in speeds, ranging from one second to  $\frac{1}{100}$  of a second, also time and bulb. An Iris diaphragm

allows the aperture to be changed at will. Supplied on the following Hawk-Eyes:

No. 3 Folding Hawk-Eye, Model 8  
No. 3-A Folding Hawk-Eye, Model 4

No. 4 Folding Hawk-Eye, Model 3  
No. 4 Folding Hawk-Eye, Model 4

### B. & L. STEREO AUTOMATIC SHUTTER

THIS shutter is made up by a combination of two automatic shutters, both working in unison, adapted for stereoscopic exposures.

It is of the highest grade, strictly automatic, perfectly balanced and accurately regulated like the single automatic shutter described above. Fitted with Iris diaphragm which allows the apertures to be changed at will. It is handsomely finished, compact, durable and practically dust-proof. Furnished as regular equipment on Stereo Model 4.

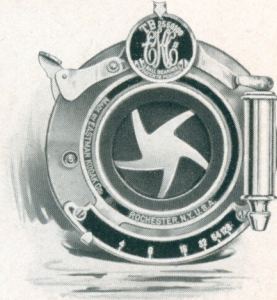




## Shutter Equipment

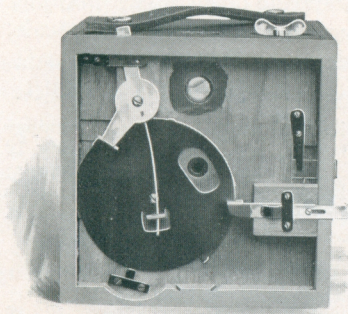
### KODAK BALL BEARING SHUTTER

**T**HIS shutter operates with remarkable smoothness and precision. The leaves are made in five segments, mounted entirely on ball bearings, and open and close in the form of a star, admitting a much larger amount of light in the same space of time than any other type of shutter. It is auto-



matic, smooth and frictionless in action; is fitted with Iris diaphragm, and with indicator that registers each exposure as made. Besides operating for bulb and time exposures it has variable indicated speeds of  $\frac{1}{25}$ ,  $\frac{1}{50}$  and  $\frac{1}{100}$  seconds. Used on Nos. 1-A, 3, 3-A, and 4 Model 3 Folding Hawk-Eyes.

### HAWK-EYE ROTARY SHUTTER



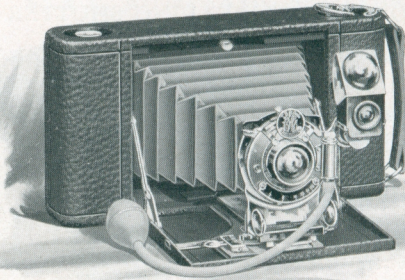
**T**HIS shutter is used on the box style of cameras, and in connection with a single set focus Meniscus Lens, makes an ideal combination. Being rotary in design and evenly balanced, it works with the same speed and accuracy in either horizontal or vertical position. The exposures are made by pushing the release

lever to the right or left or *vice versa*, and it is easily changed from instantaneous to time by drawing out the time catch. Used on Nos. 2, 4, 5 and 7 Weno Hawk-Eye.



# No. 1-A Folding Hawk-Eye

MODEL 1



**T**HE No. 1-A Folding Hawk-Eye camera possesses individuality and elegance; is devoid of all complications yet perfectly adapted for all-around work. It is the smallest camera fitted with Pneumatic Release shutter; strictly high-grade, handsomely designed and beautifully finished. The lens furnished with regular equipment is a Rapid Rectilinear of excellent definition, brilliancy and depth, with splendid covering power.

A Single Achromatic Meniscus lens of fixed focus, when fitted to this camera, makes a desirable outfit which does not require any judgment of distances nor use of focusing scale, and produces negatives full of detail and depth.

## DETAILS

Made of aluminum; covered with seal grain leather; trimmings polished brass, nickel plated; pictures  $2\frac{1}{2} \times 4\frac{1}{4}$  inches; capacity 12 exposures; size of camera  $1\frac{3}{4} \times 4\frac{1}{8} \times 7\frac{3}{4}$  inches; weight 26 ounces; No. 1 Kodak Ball Bearing shutter; Rapid Rectilinear lens; automatic focusing lock; tripod socket; brilliant reversible finder. Uses No. 1-A F. P. K. Eastman Non-Curling Film.

## PRICE LIST

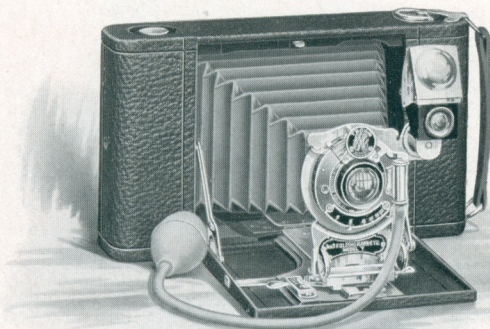
No. 1-A Folding Hawk-Eye, Auto-Focusing Lock, R. R. Lens, No. 1	
Kodak Ball Bearing Shutter, not loaded	\$15.00
No. 1-A Folding Hawk-Eye, Single Lens and No. 1 Kodak Ball Bearing Shutter, not loaded	13.50
Eastman Non-Curling Film Cartridge, 6 exposures, $2\frac{1}{2} \times 4\frac{1}{4}$	.25
Eastman Non-Curling Film Cartridge, 12 exposures, $2\frac{1}{2} \times 4\frac{1}{4}$	.50
Hawk-Eye Portrait Attachment	.50
Black Sole Leather Carrying Case, with shoulder strap	1.25

(For prices of special equipments see page 25.)



# No. 3 Folding Hawk-Eye

MODEL 7



**T**HIS camera is perfectly appointed, of simple construction, compact yet strongly built, making a particularly desirable instrument for the beginner.

The standard is clamped automatically to the front bed plate; the shutter having star-shaped opening with Iris diaphragm, is automatic and the Rapid Rectilinear lens with 5-inch equivalent focus gives proper perspective and excellent depth and definition.

The No. 3 is also furnished with a single Achromatic Meniscus lens which requires no judgment as to distances—all objects 8 feet or over being in sharp focus.

## DETAILS

Made of aluminum; covered with seal grain leather; trimmings polished brass, nickel plated; pictures  $3\frac{1}{4} \times 4\frac{1}{4}$  inches; capacity 12 exposures; size of camera  $1\frac{1}{8} \times 4\frac{3}{8} \times 8$  inches; weight 28 ounces; No. 1 Kodak Ball Bearing shutter; Rapid Rectilinear lens; automatic focusing lock; two tripod sockets; brilliant reversible finder. Uses No. 3 F. P. K. Eastman Non-Curling Film.

## PRICE LIST

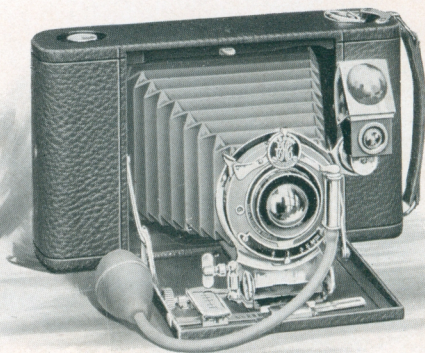
No. 3, Model 7, Auto. Focusing Lock, R. R. Lens, No. 1 B. B. Shutter, not loaded	\$16.00
No. 3, Model 7, Single Lens, No. 1 B. B. Shutter, not loaded	14.50
Eastman Non-Curling Film Cartridge, 6 exposures, $3\frac{1}{4} \times 4\frac{1}{4}$	.35
Eastman Non-Curling Film Cartridge, 12 exposures, $3\frac{1}{4} \times 4\frac{1}{4}$	.70
Hawk-Eye Portrait Attachment	.50
Glass Plate Adapter (only)	3.50
Double Glass Plate Holder, for $3\frac{1}{4} \times 4\frac{1}{4}$ Plates	1.00
Black Sole Leather Carrying Case, with shoulder strap	1.25





## No. 3 Folding Hawk-Eye

MODEL 8



**T**HE No. 3 Folding Hawk-Eye Model 8, is designed in every way to meet the requirements of the advanced as well as the beginner under all conditions of amateur photography, and is therefore adapted for those who desire an outfit for a wider range of work than can be accomplished successfully with the Model 7.

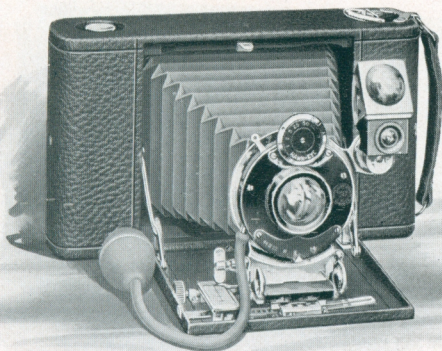
The superiority of this instrument is in the splendid optical equipment, specially selected, the Rapid Rectilinear lens being larger than ordinarily used in a  $3\frac{1}{4} \times 4\frac{1}{4}$  camera, having  $5\frac{1}{2}$  inches equivalent focus, and working at a speed of f-8, thus giving clearer and sharper pictures at full opening of the diaphragm and allowing the photographer to make quicker exposures in dull light.

The shutter regularly furnished is the Kodak Ball Bearing, with star-shaped opening, the leaves being in five segments, allowing the passage of much more light in the same space of time than the ordinary type of Iris diaphragm two-winged shutter. Another shutter equipment is the well and favorably known B. & L. No. 1 Automatic, having star-shaped opening, working for time, bulb and accurately graduated instantaneous speeds of  $\frac{1}{100}$ ,  $\frac{1}{50}$ ,  $\frac{1}{25}$ ,  $\frac{1}{15}$ ,  $\frac{1}{10}$ , and 1 second; the slower speeds being used to advantage when the light is not strong enough to secure a satisfactory photograph with a more rapid exposure.



# No. 3 Folding Hawk-Eye

MODEL 8



**T**WO equipments not often found on a camera of this size are the rack and pinion for instant and accurate focusing, either with plates or films; and the rising front which is necessary when photographing tall buildings or when one wishes to decrease the amount of unsightly foreground in a picture.

This camera is light, compact, pleasing in appearance, perfect in construction, excellent in results, is handsomely finished throughout, and the size of picture is one of the most popular. Dry plates can be used by means of an adapter instantly interchangeable with the regular back.

## DETAILS

Made of aluminum; covered with seal grain leather; trimmings polished brass, nickel plated; pictures  $3\frac{1}{4} \times 4\frac{1}{4}$  inches; capacity 12 exposures; size of camera  $1\frac{3}{4} \times 4\frac{5}{8} \times 8$  inches; weight 28 ounces; No. 2 Kodak Ball Bearing or No. 1 B. & L. Automatic shutter; R. R. lens; rack and pinion; rising front; two tripod sockets; brilliant reversible finder. Uses No. 3 F. P. K. Eastman Non-Curling Film.

## PRICE LIST

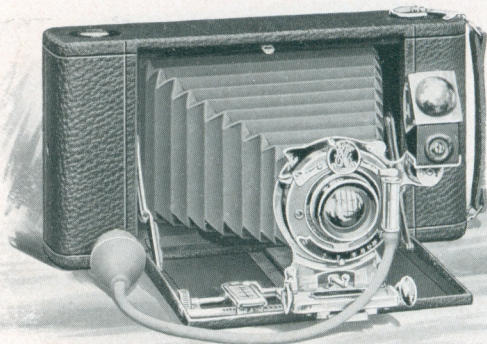
No. 3, Model 8, No. 2 Kodak Ball Bearing Shutter, not loaded	\$18.00
No. 3, Model 8, B. & L. or Kodak Automatic Shutter, not loaded	22.00
Eastman Non-Curling Film Cartridge, 6 exposures, $3\frac{1}{4} \times 4\frac{1}{4}$	.35
Eastman Non-Curling Film Cartridge, 12 exposures, $3\frac{1}{4} \times 4\frac{1}{4}$	.70
Hawk-Eye Portrait Attachment	.50
Glass Plate Adapter (only)	3.50
Double Glass Plate Holder for $3\frac{1}{4} \times 4\frac{1}{4}$ plates	1.00
Black Sole Leather Carrying Case, with shoulder strap	1.25

(For prices of special equipments see page 25.)



## No. 3-A Folding Hawk-Eye

MODEL 3



**T**HE No. 3-A Folding Hawk-Eye is the highest attainment of what may be classed pocket camera construction, folding in such compact form that it may readily be carried in a top coat pocket. It has all the features and adjustments found on cameras of three times its bulk, and these coupled with its capacity of ten exposures  $3\frac{1}{4} \times 5\frac{1}{2}$ , commend it to the most advanced amateur. Like all Folding Hawk-Eyes, the No. 3-A opens horizontally, as most pictures are taken with the camera in this position.

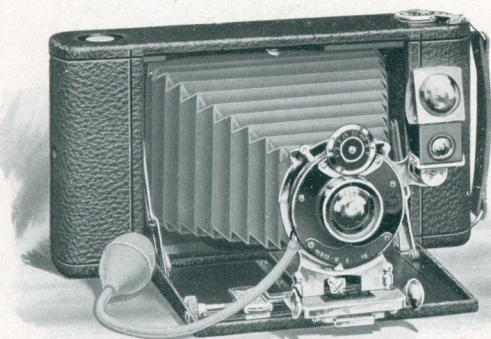
A desirable feature embodied in the equipment of the No. 3-A is the rack and pinion for focusing, also the sliding front which is useful when photographing tall buildings or similar objects. The lenses furnished with the regular equipment are the highest grade of rectilinear type, and each one is carefully tested to insure uniformity. They have a focal length of  $6\frac{1}{2}$  inches, which length overcomes all distortion, produces correct perspective and work at a speed of f-8.

The No. 3-A Folding Hawk-Eye, Model 3, is fitted with the No. 2 Kodak Ball Bearing Shutter, illustrated and described on page 5. The Model 4 is equipped with the No. 1 Bausch & Lomb Automatic Shutter, having star-shaped opening and variable speeds, see page 4.



# No. 3-A Folding Hawk-Eye

MODEL 4



**W**ITH this shutter the camera is capable of a wide range of work, the fractions of seconds being useful when one is working in weaker light; for instance, early in the morning or late in the afternoon. It is constructed so as to admit of adapting Anastigmat lenses, and when so equipped makes the highest possible grade of instrument which can be produced. It is compact, handsome and efficient.

## DETAILS

Made of aluminum; covered with seal grain leather; trimmings polished brass, nickel plated; pictures  $3\frac{1}{4} \times 5\frac{1}{2}$  inches; capacity 10 exposures; size of camera  $2\frac{1}{8} \times 4\frac{7}{8} \times 9\frac{3}{8}$  inches; weight 39 ounces; Model 3, No. 2 Kodak Ball Bearing shutter; Model 4, No. 1 B. and L. Automatic Shutter; Rapid Rectilinear lens; rack and pinion; sliding front; two tripod sockets; brilliant reversible finder. Uses No. 3-A P. P. K. Eastman Non-Curling Film.

## PRICE LIST

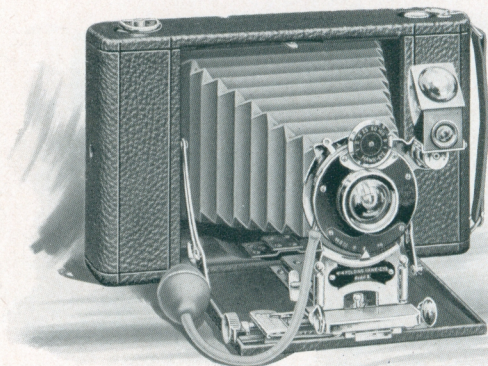
No. 3-A Folding Hawk-Eye, Model 3, with R. R. Lens and No. 2 Kodak Ball Bearing Shutter, not loaded	\$20.00
No. 3-A Folding Hawk-Eye, Model 4 with R. R. Lens and B. & L. or Kodak Automatic Shutter, not loaded	25.00
Eastman Non-Curling Film Cartridge, 6 exposures, $3\frac{1}{4} \times 5\frac{1}{2}$	.40
Eastman Non-Curling Film Cartridge, 10 exposures, $3\frac{1}{4} \times 5\frac{1}{2}$	.70
Hawk-Eye Portrait Attachment	.50
Glass Plate Adapter (only)	3.50
Double Glass Plate Holders for $3\frac{1}{4} \times 5\frac{1}{2}$ plates	1.00
Black Sole Leather Carrying Case, with shoulder strap	1.50

(For prices of special equipments see page 25.)



# No. 4 Folding Hawk-Eye

MODEL 3



**T**HIS camera is constructed to meet the approval of the most exacting purchaser. The design and details have been worked out on scientific principles producing a most compact, complete and efficient instrument.

The No. 4 Folding Hawk-Eye opens horizontally. Thus ninety per cent. of the pictures are made with camera and shutter in its true position to obtain the best results. The standard is automatically clamped to front bed plate and is adjustable—rising or to either side. The No. 4 Folding Hawk-Eye is light, strong and handsomely finished.

## DETAILS

Made of aluminum, covered with seal grain leather; trimmings of polished brass, nickel plated; pictures 4 x 5 inches; capacity 12 exposures; size of camera 2 x 5 x 9 1/8 inches; weight 43 ounces; No. 2 Kodak Ball Bearing, or B. & L. Auto shutter; R. R. Lens; rack and pinion for focusing; two tripod sockets and brilliant finder. Uses No. 4 Screen Focus, Eastman Non-Curling Film.

## PRICE LIST

No. 4, Model 3, with No. 2 Kodak Ball Bearing Shutter, R. R. Lens not loaded	\$20.00
No. 4, Model 3, with B. & L. or Kodak Auto. Shutter, R. R. Lens	25.00
*Eastman Non-Curling Film Cartridge, 6 exposures, 4 x 5	.45
*Eastman Non-Curling Film Cartridge, 12 exposures, 4 x 5	.90
Hawk-Eye Portrait Attachment	.50
Glass Plate Adapter (only)	3.50
Double Glass Plate Holder	1.00
Black Sole Leather Carrying Case, with shoulder strap	1.50

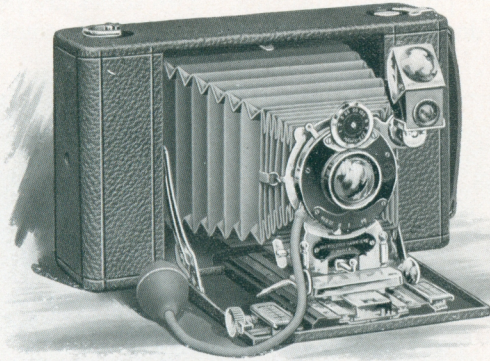
\*In ordering Film specify Screen Focus.

(For prices of special equipments see page 25.)



## No. 4 Folding Hawk-Eye

MODEL 4



**T**HE No. 4 Folding Hawk-Eye, Model 4, while designed for a wide range of work, still has the simplicity embodied in all Hawk-Eyes. Compactness combined with the completeness of its equipment places it in a class by itself. The regular optical equipment is a Bausch & Lomb Rapid Symmetrical lens, working at a speed of U. S. 4. This, coupled with the improved B. & L. Automatic shutter, illustrated and described on page 4, enables the user to make pictures under conditions which are not favorable to photography, as the lens will cover sharp to the corners with the diaphragm 4.

The bellows draw of  $13\frac{3}{4}$  inches admits the use of the back combination of the lens alone—a great advantage in making distant views, as often an object is so far away that the effect when made with a doublet is too small.

By using the back combination of the lens, the subject in the picture will be twice the size of the same subject at the same distance, made with a doublet. The illustrations on the next page demonstrate how a distant object may be brought at close range. In designing the No. 4 Folding Hawk-Eye, Model 4, nothing has been neglected. Every attachment of any value has been arranged for. It has an automatic standard clamp, rising, falling and sliding front,



## No. 4 Folding Hawk-Eye

MODEL 4

and rack and pinion for focusing. Two scales are provided, one for the doublet and the other for the back combination of the lens.



Made with Doublet—Distance 1,000 Feet

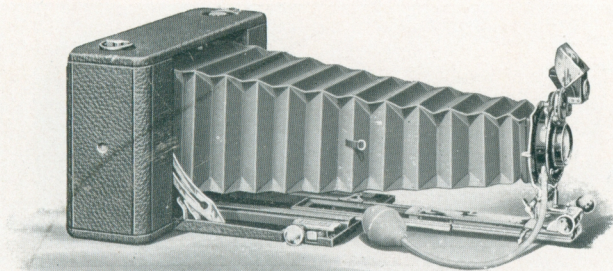


Made with Back Combination—Distance 1,000 Feet



# No. 4 Folding Hawk-Eye

MODEL 4



**W**HEN used with the glass plate adapter the camera, on account of having a long bellows, makes an efficient copying and enlarging outfit, as well as being very useful for photographing small objects close to the camera and in taking large-sized portraits without a portrait attachment.

The No. 4 Folding Hawk-Eye, Model 4, is rigid, compact, efficient, beautifully finished, and will meet with the favor of those who desire the most complete and compact film camera made.

## DETAILS

Made of aluminum; covered with seal grain leather; trimmings polished brass, nickel plated; pictures 4 x 5 inches; capacity 12 exposures; size of camera 2 $\frac{3}{4}$  x 5 $\frac{1}{2}$  x 9 $\frac{1}{4}$  inches; weight 53 ounces; No. 1 B. & L. Automatic shutter; Rapid Symmetrical lens; triple extension bed, 13 $\frac{3}{4}$  inches bellows draw; rack and pinion; rising front; two tripod sockets; brilliant reversible finder. Uses No. 4 Screen Focus Eastman Non-Curling Film.

## PRICE LIST

No. 4 Folding Hawk-Eye, Model 4, R. S. Lens, not loaded	. . .	\$30.00
*Eastman Non-Curling Film Cartridge, 6 exposures, 4 x 5	. . .	.45
*Eastman Non-Curling Film Cartridge, 12 exposures, 4 x 5	. . .	.90
Hawk-Eye Portrait Attachment	. . .	.50
Glass Plate Adapter (only)	. . .	3.50
Double Glass Plate Holder for 4 x 5 plates	. . .	1.00
Black Sole Leather Carrying Case, with shoulder strap	. . .	1.75

\*In ordering Film specify Screen Focus.

(For prices of special equipments see page 25.)





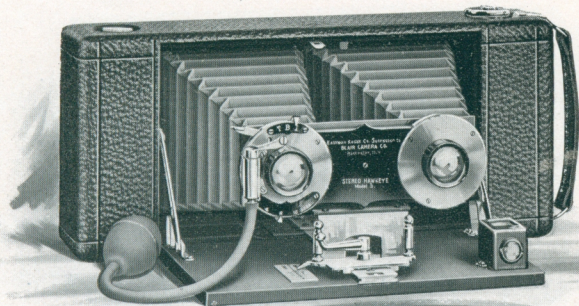
## A Varied Collection





# Stereo Hawk-Eye

MODEL 3

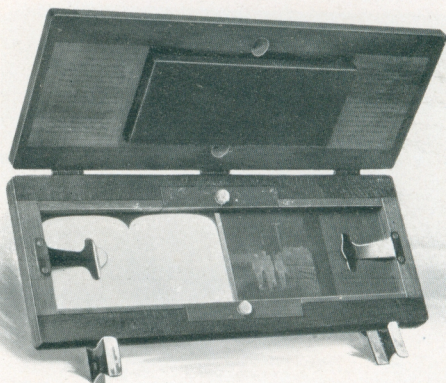


**I**N the branch of photography for which this Hawk-Eye is designed, realistic observation is produced by making two negatives of the same subject at the same time, with two lenses of the same focal length, placed in the shutter with a separation of about  $3\frac{1}{4}$  inches between centers. While the negatives look alike, yet they are not, because each is made from a different angle and thus more than half a circle is photographed. These two pictures, when viewed through a stereoscope, produce actual visual effects, showing pictures of things as our eyes see them, recreating the scenes or objects with depth, roundness, solidity, distance and perspective; or in other words, giving us the same impression as when viewing the things themselves.

In making Stereo prints it is necessary to transpose either the negatives before printing or the prints before mounting. The reason of this is that the lens throws the image on the film bottom side up, so when the negatives are viewed right side up, the one on the right is the negative made by the left lens in the camera. To correct this, the negatives or prints must be transposed; and to simplify this, the Stereo Hawk-Eye Self-Transposing Printing Frame should be used. This frame, illustrated and described on the following page, is for film negatives only, and is not adapted for glass plates.



## Stereo Hawk-Eye Self-Transposing Printing Frame



**T**HE use of the above illustrated frame makes Stereo printing as simple as any other, and the great drawback to making Stereographs is removed. No picture carries the weight as does the stereograph, because the roundness and perfect perspective is lacking in all others.

The Stereo Self-Transposing Printing Frame does away with the trimming of the negatives, so the prints made from them seem as one picture when viewed through the stereoscope, and with the use of die-cut paper, all trimming of the print is done away with.

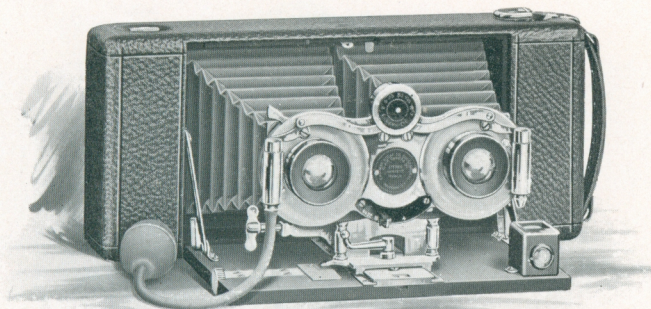
Stereo Hawk-Eyes are made in two models: The Model No. 3 is fitted with B. & L. single valve Stereo shutter, having Iris diaphragm and time, bulb and instantaneous exposure. The model No. 4 is equipped with B. & L. No. 1 Stereo Automatic shutter, having variable speeds accurately graduated from  $\frac{1}{100}$  to one second, fully described on page 4.

The lenses in both models are of the highest grade of Rapid Rectilinear type, carefully tested and accurately matched, thus producing the same perspective, density and detail in each negative. They have an equivalent focus of 5 inches, great depth and covering power, and work at a



# Stereo Hawk-Eye

MODEL 4



speed of f-8. They become universal focus when the diaphragm is set at 16 and the standard clamped at 25 feet. This is almost necessary in making Stereo pictures, as the subject in the foreground as well as objects in the distance should be in sharp focus.

The highly polished nickel plated trimmings in contrast to the rich mahogany bed and the seal grain leather covering, produce a very pleasing appearance.

## DETAILS

Made of selected cherry and mahogany, all joints dove-tailed; covered with seal grain leather; trimmings polished brass, nickel plated; pictures Standard Stereo size; capacity 6 Stereo exposures; size of camera  $2\frac{1}{8} \times 4\frac{1}{2} \times 10\frac{1}{2}$  inches; weight, Model 3, with single valve Stereo Automatic shutter 32 ounces; Model 4 with double valve Stereo Automatic shutter 40 ounces; matched Rapid Rectilinear lenses; rising front; rack and pinion for focusing; tripod socket; brilliant finder. Uses No. 2 Bulls-Eye Eastman Non-Curling Film.

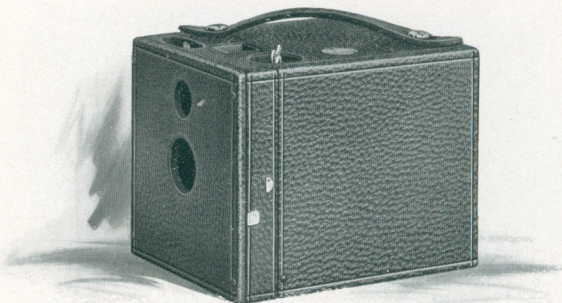
## PRICE LIST

Stereo Hawk-Eye, Model 3, R. R. Lenses, not loaded . . . . .	\$25.00
Stereo Hawk-Eye, Model 4, R. R. Lenses, not loaded . . . . .	35.00
Eastman Non-Curling Film Cartridge, 3 ex., for Stereo, $3\frac{1}{2} \times 3\frac{1}{2}$ . . . . .	.30
Eastman Non-Curling Film Cartridge, 6 ex., for Stereo, $3\frac{1}{2} \times 3\frac{1}{2}$ . . . . .	.60
Stereo Hawk-Eye Self-Transposing Printing Frame . . . . .	1.50
Glass Plate Adapter (only) . . . . .	3.50
Single Glass Plate Holder for Stereo plates, $3\frac{1}{4} \times 6\frac{1}{2}$ . . . . .	1.00
Black Sole Leather Carrying Case, with shoulder strap . . . . .	1.50

(For prices of special equipments see page 25.)



## No. 2 Weno Hawk-Eye



**T**HIS instrument makes a picture  $3\frac{1}{2} \times 3\frac{1}{2}$  inches, which has been a very popular size for the past fifteen years. It is moderate in price, and while it is very simple in construction, yet it has many improvements not included in cameras at twice its cost.

While this camera was primarily designed for the beginner, yet it finds favor with the more advanced photographer who desires a compact box camera giving a sharp, clear picture without focusing.

The No. 2 Weno Hawk-Eye is so arranged that when a hidden button is pressed, the camera may be readily opened, allowing the spool of film to be taken out or placed in the camera. All parts are intact, so there is no danger of losing a ratchet, rod or cover in loading or unloading.

### DETAILS

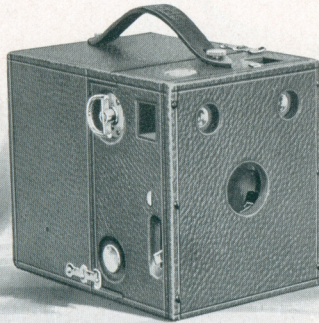
Made of selected white wood and cherry, covered with seal grain morocco leather; trimmings of polished brass, nickel plated; pictures  $3\frac{1}{2} \times 3\frac{1}{2}$  inches; capacity 12 exposures; size of camera  $4\frac{7}{8} \times 4\frac{3}{4} \times 6$  inches; weight 22 ounces; lens fixed focus Achromatic with rotary shutter and set of three stops; tripod socket and brilliant finder. Uses No. 2 Bulls-Eye Eastman Non-Curling Film.

### PRICE LIST

No. 2 Weno Hawk-Eye, not loaded . . . . .	\$5.00
Eastman Non-Curling Film Cartridge, 6 exposures, $3\frac{1}{2} \times 3\frac{1}{2}$ . . . . .	.30
Eastman Non-Curling Film Cartridge, 12 exposures, $3\frac{1}{2} \times 3\frac{1}{2}$ . . . . .	.60
Weno Hawk-Eye Portrait Attachment . . . . .	.50
Black Sole Leather Carrying Case, with shoulder strap . . . . .	1.25



## No. 4 Weno Hawk - Eye



**F**OR those who desire an efficient instrument taking a picture 4 x 5 inches, we highly recommend this box camera. A special feature in this instrument is that the lens is always in focus and all objects from 8 feet to any distance required are covered sharply.

This camera is simply yet strongly constructed, and is complete in every detail. The three diaphragm stops are carefully considered in regard to enlarging and reducing the aperture in accordance with the volume of light required for properly timing the negative.

In the last few years many improvements in camera building have enabled us to make an instrument only about half the size of the usual non-folding cameras, yet particularly satisfactory in every respect.

### DETAILS

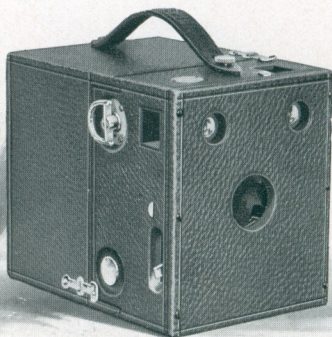
Made of selected whitewood and cherry, covered with seal grain morocco leather; trimmings of polished brass, nickel plated; pictures 4 x 5 inches; capacity 12 exposures; size of camera 5 x 5 $\frac{1}{2}$  x 6 $\frac{3}{8}$  inches; weight 32 ounces; lens, fixed focus Achromatic Meniscus with rotary shutter and set of three stops; tripod sockets and brilliant finders. Uses No. 4 Bulls-Eye Eastman Non-Curling Film.

### PRICE LIST

No. 4 Weno Hawk-Eye, not loaded . . . . .	\$8.00
Eastman Non-Curling Film Cartridge, 6 exposures, 4 x 5 . . . . .	.45
Eastman Non-Curling Film Cartridge, 10 exposures, 4 x 5 . . . . .	.75
Weno Hawk-Eye Portrait Attachment . . . . .	.50
Black Sole Leather Carrying Case, with shoulder strap . . . . .	1.50



## No. 5 Weno Hawk-Eye



**T**HE No. 5 Weno Hawk-Eye makes a photo  $3\frac{1}{4} \times 4\frac{1}{4}$  inches and is a very compact box form instrument, provided with an Automatic Shutter and Universal Focus Lens, which enables the user to make snap-shots of many subjects which would be lost in an attempt to get a folding camera in readiness for operation. The construction is exceedingly simple; the back section telescoping, which is easily removed by releasing the catches, thus giving access to the film chambers. There are no loose nor unnecessary parts to this camera, everything being well made.

Like all of our cameras, this instrument undergoes the same rigid factory inspection which assures the user satisfactory pictures. Besides, there are no complicated parts, simplicity being the key-note of construction.

### DETAILS

Made of selected whitewood and cherry, covered with seal grain morocco leather; trimmings of polished brass, nickel plated; pictures  $3\frac{1}{4} \times 4\frac{1}{4}$  inches; capacity 12 exposures; size of camera  $4\frac{5}{8} \times 5\frac{3}{8} \times 6\frac{3}{8}$  inches; weight 28 ounces; lens, fixed focus Achromatic Meniscus with rotary shutter and set of three stops; tripod sockets and brilliant finders. Uses No. 3 F. P. K. Eastman Non-Curling Film.

### PRICE LIST

No. 5 Weno Hawk-Eye, not loaded	.	.	.	\$7.50
Eastman Non-Curling Film Cartridge, 6 exposures, $3\frac{1}{4} \times 4\frac{1}{4}$	.	.	.	.35
Eastman Non-Curling Film Cartridge, 12 exposures, $3\frac{1}{4} \times 4\frac{1}{4}$	.	.	.	.70
Weno Hawk-Eye Portrait Attachment	.	.	.	.50
Black Sole Leather Carrying Case, with shoulder strap	.	.	.	1.50



## No. 7 Weno Hawk-Eye



**T**HIS Hawk-Eye, without question, is one of the finest box form cameras manufactured—simple, compact and inexpensive, yet well made in every particular.

Built along similar lines and with the same care as our other box cameras, this instrument possesses an advantage in the size of the picture  $3\frac{1}{4} \times 5\frac{1}{2}$  (the post card size)—a shape which produces artistic landscapes when used horizontally, or with the addition of a Hawk-Eye portrait attachment, portraits of delicate softness when used in a vertical position.

The lenses in these instruments are very carefully selected and inspected so that they cover the field with extreme sharpness of distances ranging from 8 to 100 feet or more and making the No. 7 Weno Hawk-Eyes noted for their practical excellence.

### DETAILS

Made of selected whitewood and cherry, covered with seal grain morocco leather; trimmings of polished brass, nickel plated; pictures  $3\frac{1}{4} \times 5\frac{1}{2}$  inches; capacity 10 exposures; size of camera  $4\frac{3}{4} \times 6\frac{3}{8} \times 6\frac{3}{4}$  inches; weight 33 ounces; lens, fixed focus Achromatic Meniscus with rotary shutter and set of three stops; tripod sockets and brilliant finders. Uses No. 3-A F. P. K. Eastman Non-Curling Film.

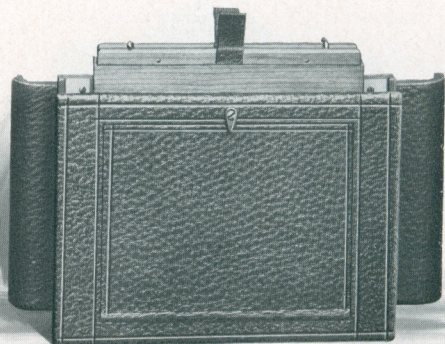
### PRICE LIST

No. 7 Weno Hawk-Eye, not loaded	..	..	\$8.00
Eastman Non-Curling Film Cartridge, 6 exposures, $3\frac{1}{4} \times 5\frac{1}{2}$	..	..	.40
Eastman Non-Curling Film Cartridge, 10 exposures, $3\frac{1}{4} \times 5\frac{1}{2}$	..	..	.70
Weno Hawk-Eye Portrait Attachment	..	..	.50
Black Sole Leather Carrying Case, with shoulder strap	..	..	1.50

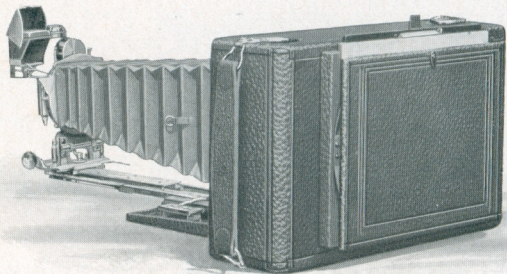




## Plate Adapter



**A**LL the Folding Hawk-Eyes may be converted into efficient plate cameras by the use of the Plate Adapter which is fitted with spring actuating ground glass. These adapters are made interchangeable with the back covers, and are listed below.



Folding Hawk-Eye Showing Bed Extended; Fitted with Plate Adapter.

### PRICE LIST

Plate Adapter only, for No. 3 Folding Hawk-Eye, Models 5, 6, 7 and 8	\$3.50
Plate Adapter only, for No. 3-A Folding Hawk-Eye, Models 1, 2, 3, 4	3.50
Plate Adapter only, for No. 4 Folding Hawk-Eye, Models 3 and 4	3.50
Plate Adapter only, for Stereo Hawk-Eye, Models 3 and 4	3.50
Double Plate Holder, $3\frac{1}{4} \times 4\frac{1}{4}$	1.00
Double Plate Holder, $4 \times 5$	1.00
Double Plate Holder, $3\frac{1}{4} \times 5\frac{1}{2}$	1.00
Single Stereo Plate Holder, $3\frac{1}{4} \times 6\frac{1}{2}$	1.00

(When ordering Plate Adapter specify model of camera.)



## Special Equipments

### Hawk-Eyes Fitted with Anastigmat Lenses and Rapid Shutters

#### FOLDING HAWK-EYES FITTED WITH No. 0 COMPOUND SHUTTER

No. 1-A Model 1 with No. 1 Zeiss Kodak Anastigmat lens . . .	\$43.40
No. 1-A Model 1 with No. 3 Tessar lens, Series II-b . . .	54.40
No. 3 Model 8 with No. 2 Zeiss Kodak Anastigmat lens . . .	48.60
No. 3 Model 8 with No. 4 Tessar lens, Series II-b . . .	61.10

#### FOLDING HAWK-EYES FITTED WITH No. 1 COMPOUND SHUTTER

No. 3-A Model 4 with No. 3 Zeiss Kodak Anastigmat lens . . .	\$58.30
No. 3-A Model 4 with No. 5 Tessar lens, Series II-b . . .	67.30
No. 4 Model 3 with No. 3 Zeiss Kodak Anastigmat lens . . .	58.30
No. 4 Model 3 with No. 5 Tessar lens, Series II-b . . .	67.30
No. 4 Model 4 with No. 7 Zeiss Protar lens, Series VII-a . . .	102.30

#### FOLDING HAWK-EYES FITTED WITH No. 1 AUTOMATIC SHUTTER

No. 3 Model 8 with No. 2 Zeiss Kodak Anastigmat lens . . .	\$40.30
No. 3 Model 8 with No. 4 Tessar lens, Series II-b . . .	52.80
No. 3-A Model 4 with No. 3 Zeiss Kodak Anastigmat lens . . .	47.50
No. 3-A Model 4 with No. 5 Tessar lens, Series II-b . . .	56.50
No. 4 Model 3 with No. 3 Zeiss Kodak Anastigmat lens . . .	47.50
No. 4 Model 3 with No. 5 Tessar lens, Series II-b . . .	56.50
No. 4 Model 4 with No. 7 Zeiss Protar lens, Series VII-a . . .	91.50

#### STEREO HAWK-EYES FITTED WITH No. 0 STEREO COMPOUND SHUTTER

Stereo Model 4 with No. 2 Zeiss Kodak Anastigmat lenses . . .	\$ 82.05
Stereo Model 4 with No. 4 Tessar lenses, Series II-b . . .	107.05

#### STEREO HAWK-EYES FITTED WITH No. 1 STEREO AUTOMATIC SHUTTER

Stereo Model 4 with No. 2 Zeiss Kodak Anastigmat lenses . . .	\$73.55
Stereo Model 4 with No. 4 Tessar lenses, Series II-b . . .	98.55

(The prices given in this table are net)



## Hawk-Eye Accessories

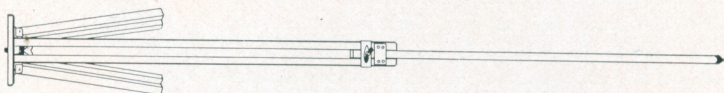
### COMBINATION TRIPOD



This tripod is made on the sliding and folding principle. The wood parts are of ash and the finish is of the very best. The trimmings are of brass with lacquer finish. The length when extended varies according to size from fifty-six to fifty-nine inches; when folded, from twenty-two to twenty-three inches.

STYLE	SIZE OF CAMERA	WEIGHT	PRICE
No. 2½	6½ x 8½ and smaller	3 lbs. 2 ozs.	\$3.00
“ 3	8 x 10 and 10 x 12	4 lbs. 3 ozs.	3.50
“ 4	11 x 14 and 14 x 17	5 lbs.	4.50
“ 5	17 x 20 and 20 x 24	7 lbs.	6.00

### SLIDING TRIPOD



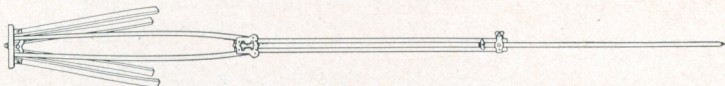
As a rigid tripod none will be found more satisfactory than the Sliding. The legs are made in two sections, producing a very firm support. The top is of wood covered with cloth. The two smaller sizes are made of spruce, the larger of ash. They are well finished and the metal parts are of lacquered brass.

STYLE	SIZE OF CAMERA	WEIGHT	PRICE
No. 1	5 x 7 and smaller	2 lbs.	\$2.00
“ 2	5 x 8 and 6½ x 8½	2 lbs. 8 ozs.	2.50
“ 3	8 x 10 and 10 x 12	4 lbs. 8 ozs.	3.00
“ 4	11 x 14 and 14 x 17	7 lbs. 3 ozs.	4.00



# Hawk-Eye Accessories

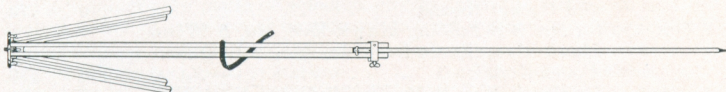
## MAPLE TRIPOD



The Maple tripod is of the combination type, light and compact. It is beautifully finished in natural color with trimmings of lacquered brass. Furnished with metal or wood head as desired. Adapted for any camera up to and including the 5 x 7 size.

Weight, 30 ounces    Length, 21 to 56 inches    Price, \$1.70

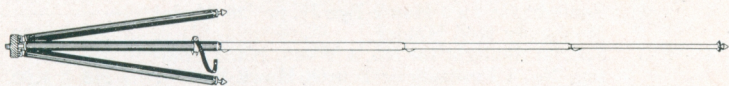
## WENO TRIPOD



Although very light this tripod is rigid. The top not being removable the tripod is always ready for use. Made of straight grained spruce and designed for cameras up to and including the 5 x 7 size.

Weight, 17 ounces    Length, 29½ to 54 inches    Price, \$ .90

## KODAK METAL TRIPOD



Strength and rigidity have been combined in this light weight, compact tripod. Each leg works on the telescopic plan, and as drawn out, sets automatically. Fitted with nicked revolving head and screw.

No. 1, 4 Sections, Length, 15 to 48½ in., Wt., 24 ozs., Price, \$2.50  
No. 2, 5 Sections, Length, 13½ to 49½ in., " 25 ozs., Price, 3.25



# Film

## EASTMAN NON-CURLING CARTRIDGE FILM

		6 Ex. 12 Ex.	
		\$	\$
2¼ x 2¼	for No. 1 Brownie	.15	.20
2¼ x 3¼	for No. 2 Brownie, No. 2 Fldg. Pocket Brownie	.20	
2½ x 4¼	for No. 1-A Folding Hawk-Eye, Pocket Kodak, Pocket Kodak Special, No. 2-A Brownie, No. 2-A Folding Brownie	.25	.50
*3½ x 3½	for Hawk-Eye, Bulls-Eye, Bullet or Buck-Eye	.30	.60
3¼ x 4¼	for No. 3 Brownie, No. 3 Folding Brownie, No. 3 Bulls-Eye Kodak	.35	.70
*3¼ x 4¼	for No. 3 Weno Hawk-Eye, Stereo Hawk-Eye, Models Nos. 1 and 2, No. 3 Combination Hawk-Eye, or No. 3 Focusing Hawk-Eye, No. 3 Folding Hawk-Eye, Kodak or Buck-Eye	.35	.70
4 x 5	for No. 4 Folding Hawk-Eye Models 3 and 4, No. 4 Screen Focus Kodak	.45	.90
3¼ x 5½	for No. 7 Weno, No. 3-A Folding Hawk-Eye and Pocket Kodak	.40	10 Ex. .70
3¼ x 5½	for No. 3-B Folding Hawk-Eye, No. 6 Weno Hawk-Eye, Stereo Brownie, No. 3-B Quick-Focus Kodak	.40	.70
4 x 5	for Hawk-Eye, Bulls-Eye, Bullet or Buck-Eye	.45	.75

## BLAIR PERFORATED DAYLIGHT LOADING FILM

		6 Ex. 12 Ex.	
		\$	\$
2 x 2½	Sunlight for Baby Hawk-Eye	.30	.40
3½ x 3½	Sunlight for Hawk-Eye Jr.	.30	.60
3½ x 3½	Special Sunlight for Weno or Tourist Hawk-Eye (small flange spool)	.30	.60
3¼ x 4¼	Sunlight for No. 3 Folding, No. 3 Focusing Hawk-Eye or No. 3 Combination Hawk-Eye (small flange spool)	.35	.70
4 x 5	Sunlight for 4 x 5 Hawk-Eye Jr. or '96 Model Mahogany Roll Holder	.45	.90
4 x 5	Special Sunlight for No. 4 Weno, No. 4 Folding, No. 4 Focusing or Tourist Hawk-Eye	.45	.90

All Perforated Film is especially prepared for use in the Kodak Film Tank.

—\*3¼ x ¼ and 3½ x 3½—6 exposure lengths supplied on regular size spools.  
Small flange spool supplied when specified.

NOTE—When ordering film, state whether you desire the Blair Non-Curling (numbers on back), or Perforated; if the latter, specify Sunlight or Special Sunlight; always state the style of Hawk-Eye for which it is intended. If in doubt as to style, give exact description of camera with measurements.



# Hawk-Eye Sundries

## CARRYING CASES

Made of Black Sole Leather, including shoulder strap, and first-class in every way.

No. 2 Weno Hawk-Eye	- - - - -	\$1.25
No. 4 Weno Hawk-Eye	- - - - -	1.50
No. 5 Weno Hawk-Eye	- - - - -	1.50
No. 7 Weno Hawk-Eye	- - - - -	1.50
No. 1-A Folding Hawk-Eye, Model No. 1	- - - - -	1.25
No. 3 Folding Hawk-Eye, Models Nos. 3, 4, 5, 6, 7 and 8	- - - - -	1.25
No. 3-A Folding Hawk-Eye, Models Nos. 1, 2, 3 and 4	- - - - -	1.50
No. 4 Folding Hawk-Eye, Model No. 3	- - - - -	1.50
No. 4 Folding Hawk-Eye, Model No. 4	- - - - -	1.75
Stereo Hawk-Eye, Models Nos. 1, 2, 3 and 4	- - - - -	1.50

(Prices given on application for old style and special cases.)

## PLATE HOLDERS

In ordering plate holders, to avoid the possibility of delay or error, it is always best to mention the camera in which they are to be used, or give outside measurements with slides withdrawn.

All holders are made of selected cherry, and the slides can be furnished either of waterproof cardboard or hard rubber, as listed below.

Used in Cameras Listed in Catalogue			Used in Obsolete Cameras		
SIZE	STYLE	With Rubber Slides	SIZE	With Board Slides	With Rubber Slides
3¼ x 4¼	Double	\$1.00	3¼ x 3¼	\$.80	\$1.00
3¼ x 5½	Double	1.00	4 x 5	1.00	1.20
3¼ x 6½	Stereo	1.00	5 x 7	1.50	1.80
4 x 5	Double	1.00	6½ x 8½	2.00	2.50
			8 x 10	2.35	2.95

## SLIDES FOR HOLDERS

SIZE	BOARD	Polished Hard Rubber	SIZE	BOARD	Polished Hard Rubber
3¼ x 3¼	\$.10	\$.20	4 x 5	\$.15	\$.25
3¼ x 4¼	Not F'rnish'd	.20	5 x 7	.20	.35
3¼ x 5½	" "	.25	6½ x 8½	.25	.50
3¼ x 6½	" "	.25	8 x 10	.35	.65

## CARD MOUNTS

We do not carry a complete assortment of card stock, selecting only what we think most desirable for the amateur's use, in Carbon Black or Scotch Gray only.

	PER 50	PER 100		PER 50	PER 100
2½ x 4¼	\$.40	\$.80	3¼ x 5½	\$.45	\$.90
3½ x 3½	.40	.80	4 x 5	.45	.90
3¼ x 4¼	.45	.85	Stereo	.50	1.00



# Hawk-Eye Sundries

## VELOX DEVELOPING-OUT PAPER

An ideal amateur paper. Prints and develops quickly by artificial light.

	Dozen	Gross		Dozen	Gross
2½ x 4¼ . . . . .	\$ .15	\$1.25	3¼ x 5½ . . . . .	\$ .15	\$1.50
3½ x 3½ . . . . .	.15	1.50	4 x 5 . . . . .	.25	2.00

## AZO DEVELOPING-OUT PAPER

Die cut for Stereo prints . . . . .	2 Dozen	Gross
	\$ .25	\$1.10

## SOLIO PRINTING-OUT PAPER

Brilliant high lights, silky half-tones, rich, transparent shadows.

	2 Dozen	Gross		2 Dozen	Gross
3½ x 3½ . . . . .	\$ .20	\$1.15	3¼ x 5½ . . . . .	\$ .25	\$1.25
3¼ x 4¼ . . . . .	.20	1.15	4 x 5 . . . . .	.25	1.25

## EASTMAN AND STANDARD DRY PLATES

Extra rapid for instantaneous work.

	Dozen		Dozen
3¼ x 3¼ . . . . .	\$ .40	3¼ x 5½ . . . . .	\$ .65
3½ x 3½ . . . . .	.40	3¼ x 6½ (Stereo) . . . . .	.75
3¼ x 4¼ . . . . .	.45	4 x 5 . . . . .	.65

## HAWK-EYE DEVELOPING TRAYS

These trays are light in weight, tough and strong, and are not affected by the action of chemicals; are easily kept clean, and we recommend them for amateurs' use.

	Each		Each
4 x 5 . . . . .	\$ .15	5 x 7 . . . . .	\$ .25

## PRINTING FRAMES

	Each		Each
3¼ x 5½ . . . . .	\$ .25	5 x 7 . . . . .	\$ .35
4 x 5 . . . . .	.25	Stereo, Self-Transposing,	1.50

## CHEMICALS

Solio Toning Solution, 8 oz. bottle, . . . . .	\$ .50
Solio Hardener, 8 oz. bottle, . . . . .	.35
M. Q. N. A. developing tubes, box 5 tubes, . . . . .	.75
Acid-Hypo, for Films or Velox, per pound, . . . . .	.25



# Hawk-Eye Sundries

## OUTFITS FOR DEVELOPING AND PRINTING

To save time and trouble in selecting the articles needed for developing and printing, we furnish outfits including everything necessary at far below the cost if furnished separately.

### 3½ x 3½ FOR FILM OR PLATES

One Candle Lamp - - - \$ .25	One-quarter pound Kodak Acid Fixing Powder - - - \$ .10
Four Developing Trays - .40	One dozen Sheets Velox Paper - - - .15
One four-ounce Graduate - .10	One Bottle Nepera Developer - - - .10
One 3½ x 3½ Printing Frame .25	One Package Bromide of Potassium - - - .10
One 3½ x 3½ Glass for Frame - - - .05	Instruction Book - - - .10
One Stirring Rod - - - .05	
One-quarter dozen Developing Powders - - - .15	

**Price, complete, neatly packed, \$1.25**

### 4 x 5 FOR FILM OR PLATES

One Candle Lamp - - - \$ .25	One-half pound Kodak Acid Fixing Powder - - - \$ .15
One 4 x 5 Printing Frame - .25	One-half ounce Bromide Potassium - - - .10
One 4 x 5 Glass for Frame - .05	Two dozen 4 x 5 Velox Paper - .50
One four-ounce Graduate - .10	Two ounces Nepera Developer - - - .15
One Stirring Rod - - - .05	Instruction Book - - - .10
Four 4½ x 5½ Developing Trays - - - .40	
Five Tubes Special Developer - - - .25	

**Price, complete, neatly packed, \$1.50**

## DEVELOPING AND PRINTING

SIZE	Developing, Printing and Mounting— 12 exposures	Developing Only	Printing and Mounting	Developing Printing and Mounting
2½ x 4¼	\$1.50	\$ .06	\$ .08	\$ .12½
3½ x 3½	1.50	.06	.08	.12½
3¼ x 4¼	1.50	.06	.08	.12½
3¼ x 5½	1.50-(10 ex.)	.08	.10	.15
4 x 5	1.80	.08	.10	.15
5 x 7	1.20-(6 ex.)	.08	.12½	.20
Stereo	2.40	.10	.15	.20

## ENLARGEMENTS

	Each	Per Doz.		Each
4¼ x 6½, on card,	\$ .35	\$3.00	10 x 12, on card,	\$1.00
6½ x 8½, on card,	.50	5.00	11 x 14, on card,	1.25
8 x 10, on card,	.75	7.50	14 x 17, on card,	1.50

Larger sizes in proportion.

No extra charges for Sepia Tones. Small extra charge for double or triple mounting. Where the kind of paper is not specified, we use our own judgment.





## Terms

**T**HE prices are net except to dealers. Remittances should be made by draft on New York, express order, postal order or registered mail. Amounts less than one dollar may be remitted in stamps. We do not accept personal checks.

Parties unknown to us desiring shipment C. O. D. must remit one-third the estimated amount of invoice with the order.

Small parcels which do not contain glass in any form can be sent by mail at risk of the purchaser. We do not pay postage—remit when ordering.

All our goods are packed carefully, and we cannot be held responsible for any damage after the package leaves our hands.

No charge is made for packing, and prices are f. o. b. Rochester.

BLAIR CAMERA DIVISION,

EASTMAN KODAK COMPANY.

Rochester, New York, U. S. A.

