



HAWK-EYE
CAMERAS

HAWK-EYE
CAMERAS
AND SUPPLIES

1912

BLAIR CAMERA DIVISION
EASTMAN KODAK COMPANY
ROCHESTER, NEW YORK

HAWK-EYE CONSTRUCTION

HAWK-EYE Cameras are made of the best of materials by experienced workmen and have a record of years of satisfactory service to amateur photographers behind them.

They are made to open horizontally, with the idea that the majority of pictures are made in this position. They are very simple to understand and operate, and they offer all the conveniences of modern photography.

Hawk-Eye cameras are regularly fitted with the simplest and most accurate shutters made and with tested Lenses of first quality.

They load and unload in daylight with transparent Non-Curling Film. And as this film may be easily developed by the tank system of development, the user of a Hawk-Eye can dispense with the dark room entirely and always be assured of properly developed negatives.

Hawk-Eye Cameras are carefully made in every detail. They are designed upon symmetrical lines with a view to making them as neat and attractive in appearance as possible.

And every Hawk-Eye is rigidly inspected before it is sent out, so that in purchasing a Hawk-Eye you may be sure that it is perfectly capable of doing the work for which it is intended, as described in this catalogue.

BLAIR CAMERA DIVISION

EASTMAN KODAK CO.

ROCHESTER, N. Y.

HAWK-EYE SHUTTERS

KODAK BALL BEARING SHUTTER

THIS shutter works automatically and operates with remarkable smoothness and precision. The leaves are made in five segments, mounted entirely on ball bearings, and open and close in the form of a star, admitting a much greater amount of light in the same space of time than the ordinary shutter. Has variable indicated speeds of $\frac{1}{25}$, $\frac{1}{50}$ and $\frac{1}{100}$ second, operates for bulb or time exposures, and is fitted with indicator registering each exposure as made. Supplied with Nos. 1-A, 3, 3-A and 4, Model 3, Hawk-Eyes.



KODAK AUTOMATIC SHUTTER AND KODAK AUTOTIME SCALE

The Kodak Automatic Shutter is carefully adjusted for time, bulb and instantaneous exposures. It is also graduated for fractional parts of a second, and is unusually accurate upon all its speeds. It is regularly fitted with the Kodak Autotime Scale and is supplied on the No. 3-A, Model 4, and No. 4, Model 4, Hawk-Eye, and as a special equipment on the No. 3, Model 8, and No. 4, Model 3. The Kodak Autotime Scale greatly reduces the liability of error in exposure, as it automatically indicates the proper time and stop opening for subjects under any condition of outdoor photography, and is simple to use. It can be attached to any pneumatic release shutter. Merely unscrew regular scales and substitute Autotime. Specify shutter when ordering.

Price for Compound Shutter, \$1.50. For all other Shutters, \$1.00.

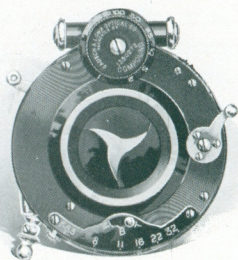
HAWK-EYE SHUTTERS

COMPOUND SHUTTER

THE Compound Shutter is an automatic and setting shutter combined. Automatically, either time or bulb exposures may be made, while the shutter may be set for speeds up to $\frac{1}{150}$, $\frac{1}{200}$ or $\frac{1}{250}$ second according to size.

The shutter leaves are formed of segments opening in star shape, giving even illumination over the entire plate the instant the exposure is started, and an Iris diaphragm is provided. Furnished as a special equipment with Hawk-Eyes taking anastigmat lenses. The Compound is also offered as a Stereo Shutter in which two of these shutters are mounted together and regulated to work in unison.

It is offered as a special equipment with Stereo Hawk-Eye, Model 6.



B. & L. STEREO AUTOMATIC SHUTTER



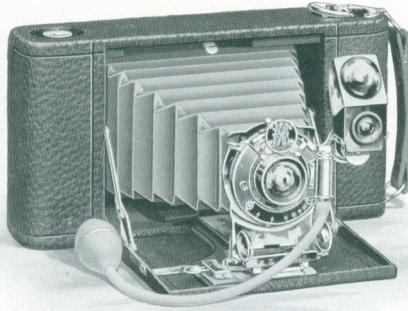
This shutter is made up by a combination of two automatic shutters, both working in unison, adapted for stereoscopic exposures.

It is of the highest grade, strictly automatic, perfectly balanced and works for retarded speeds of

from 1 to $\frac{1}{100}$ seconds as well as bulb and time.

Fitted with Iris diaphragm which allows the apertures to be changed at will. It is handsomely finished, compact, durable and practically dust-proof. Furnished as regular equipment on Stereo Model 6.

No. 1-A FOLDING HAWK-EYE—Model 1



DESIGNED for one of the most popular sizes of amateur pictures, this is a camera of great efficiency, and so compact as to slip readily into the ordinary coat pocket. It is regularly supplied with the Kodak Ball Bearing Shutter and R. R. Lens of first quality. But it is also furnished with single meniscus lens, in which case no focusing or estimating of distances is necessary. The camera will produce very good pictures with either equipment, but, of course, the double lens is somewhat faster than the single.

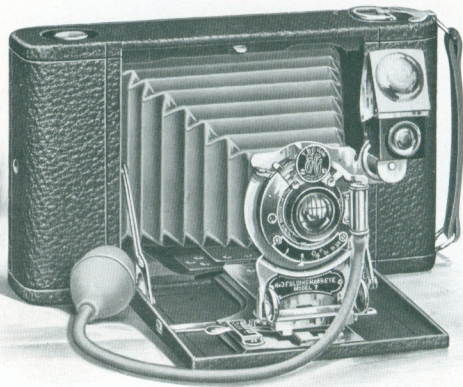
The 1-A Hawk-Eye is well made and beautifully finished. Metal parts are nicked and covering is genuine leather of first quality.

DETAILS: Made of aluminum; covered with seal grain leather; trimmings polished brass, nickel plated; pictures $2\frac{1}{2} \times 4\frac{1}{4}$ inches; capacity 12 exposures; size of camera $1\frac{3}{4} \times 4\frac{1}{8} \times 7\frac{3}{4}$ inches; weight 26 ounces; No. 1 Kodak Ball Bearing Shutter; Rapid Rectilinear or Meniscus Achromatic Lens; automatic focusing lock; tripod socket; brilliant reversible finder.

PRICE LIST

No. 1-A Folding Hawk-Eye, R. R. Lens, No. 1 Kodak Ball Bearing Shutter	\$15.00
No. 1-A Folding Hawk-Eye, Meniscus Achromatic Lens and No. 1 Kodak Ball Bearing Shutter	13.50
No. 1-A Folding Hawk-Eye with Zeiss Kodak Anastigmat Lens <i>f</i> .6.3 and Compound Shutter	45.80
Black Sole Leather Carrying Case, with shoulder strap	1.25
Non-Curling Film Cartridge, 6 exposures, $2\frac{1}{2} \times 4\frac{1}{4}$25
Non-Curling Film Cartridge, 12 exposures, $2\frac{1}{2} \times 4\frac{1}{4}$50
Hawk-Eye Portrait Attachment50

No. 3 FOLDING HAWK-EYE—Model 7



THIS Hawk-Eye is made upon the same lines as the No. 1-A. It offers the same choice of double or single lens fitted to Kodak Ball Bearing Shutter and has the same general appearance, but makes larger pictures. Still it is so compact as to go into the pocket and will provide anyone with a perfectly reliable, efficient camera for $3\frac{1}{4} \times 4\frac{1}{4}$ pictures—a very desirable size.

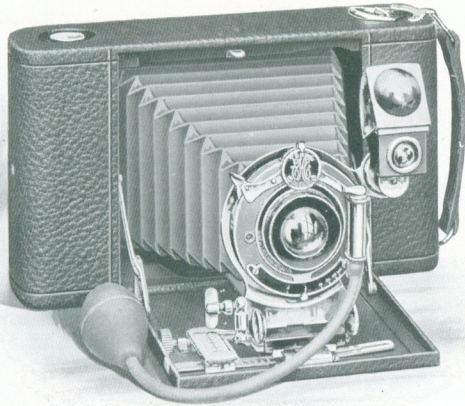
It is very simple to operate, it loads and unloads in daylight, and is as well made and dependable an outfit as can be secured at anywhere near the price.

DETAILS: Made of aluminum; covered with seal grain leather; trimmings polished brass, nickel plated; pictures $3\frac{1}{2} \times 4\frac{1}{4}$ inches; capacity 12 exposures; size of camera $1\frac{7}{8} \times 4\frac{3}{8} \times 8$ inches; weight 28 ounces; No. 1 Kodak Ball Bearing Shutter; Rapid Rectilinear or Meniscus Achromatic Lens; automatic focusing lock; two tripod sockets; brilliant reversible finder.

PRICE LIST

No. 3, Model 7, R. R. Lens, Kodak Ball Bearing Shutter	\$ 16.00
No. 3, Model 7, Meniscus Achromatic Lens, Kodak Ball Bearing Shutter	14.50
Black Sole Leather Carrying Case, with shoulder strap	1.25
Non-Curling Film Cartridge, 6 exposures, $3\frac{1}{4} \times 4\frac{1}{4}$35
Non-Curling Film Cartridge, 12 exposures, $3\frac{1}{4} \times 4\frac{1}{4}$70
Hawk-Eye Portrait Attachment50
Glass Plate Adapter (only)	3.50
Double Glass Plate Holder, for $3\frac{1}{4} \times 4\frac{1}{4}$ Plates	1.00

No. 3 FOLDING HAWK-EYE—Model 8



THIS model, also making $3\frac{1}{4} \times 4\frac{1}{4}$ pictures, is more fully equipped than the preceding one and yet is just as compact and just as simple to operate. It is made to meet the requirements of the most advanced amateur, but is so simply constructed as to be readily understood and operated by the beginner.

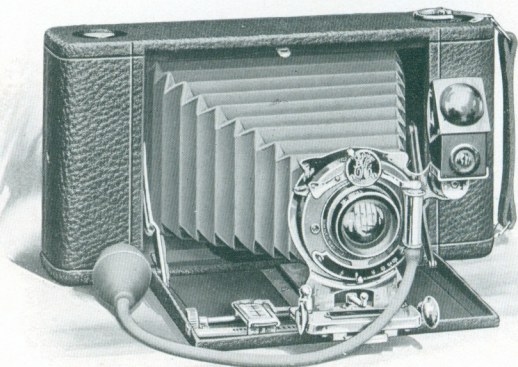
It has rack and pinion for focusing, rising front, automatic standard clamp, and will accommodate glass plates by means of an adapter, interchangeable with the regular back.

DETAILS: Made of aluminum; covered with seal grain leather; trimmings polished brass, nickel plated; pictures $3\frac{1}{4} \times 4\frac{1}{4}$ inches; capacity 12 exposures; size of camera $1\frac{3}{4} \times 4\frac{5}{8} \times 8$ inches; weight 28 ounces; No. 2 Kodak Ball Bearing Automatic Shutter; R. R. Lens; rack and pinion; rising front; two tripod sockets; brilliant reversible finder.

PRICE LIST

No. 3, Model 8, with Kodak Ball Bearing Shutter and R. R. Lens	\$ 18.00
No. 3, Model 8, with Kodak Automatic Shutter and R. R. Lens	22.00
No. 3, Model 8, with Zeiss Kodak Anastigmat Lens <i>f.</i> 6. 3, and Compound Shutter	48.90
Black Sole Leather Carrying Case, with shoulder strap	1.25
Non-Curling Film Cartridge, 6 exposures, $3\frac{1}{4} \times 4\frac{1}{4}$35
Non-Curling Film Cartridge, 12 exposures, $3\frac{1}{4} \times 4\frac{1}{4}$70
Hawk-Eye Portrait Attachment50
Glass Plate Adapter (only)	3.50
Double Glass Plate Holder for $3\frac{1}{4} \times 4\frac{1}{4}$ plates	1.00

NO. 3-A FOLDING HAWK-EYE— *Models 3 and 4*



AS the $3\frac{1}{4} \times 5\frac{1}{2}$ (post card) is the most generally preferred of all amateur pictures, we have taken especial care in designing the 3-A Hawk-Eye to provide a camera which will make the best of pictures under all conditions where the amateur could reasonably expect to use a first-class camera.

Considering the size of the pictures it makes, the camera is very compact, for it may be easily carried in a top coat pocket, and like all Hawk-Eyes, it opens horizontally, the position in which most amateur pictures are made.

The mechanical equipment of both models is most complete, yet simple to understand and use. A sliding front makes it a simple matter to photograph tall buildings or to increase or decrease foreground in the vertical position without that distortion which inevitably occurs with cameras that have to be tipped for such pictures.

Both models are provided with rack and pinion for easy focusing, are equipped with reversible finders, double tripod sockets and automatic standard clamps. They are regularly fitted with the highest type of R. R. Lens, each one tested to insure uniformity. These lenses work at $f:8$ and have

No. 3-A FOLDING HAWK-EYE— Models 3 and 4

just the proper focal length to overcome distortion and secure the proper perspective.

They differ only in shutter equipment. The Model 3 is fitted with Kodak Ball Bearing Shutter—the most accurate and dependable of all single valve shutters, as it operates upon ball bearings, and its leaves, opening in the shape of a star, admit more light in a given time than does the ordinary type. It works for $\frac{1}{50}$ and $\frac{1}{100}$ second, as well as for bulb and tube.

The Model 4 is equipped with Kodak Automatic Shutter. This shutter is graduated for retarded speeds of from 1 to $\frac{1}{100}$ second, as well as for bulb and tube. It also incorporates the Kodak Automatic Scale, which automatically indicates the proper time of exposure under all outdoor conditions.

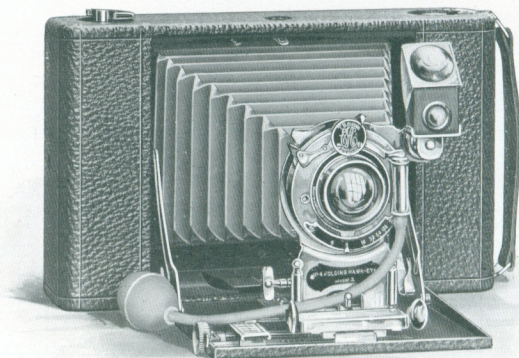
The cameras are made of aluminum and present a most handsome appearance with grain leather covering and nickle-plated fittings. With portrait attachment, they are highly efficient for home portraiture, and when fitted with anastigmat lens and compound shutter, the 3-A Hawk-Eye will produce the best of pictures wherever successful results could possibly be obtained, aside from ultra speed focal plane photography.

DETAILS: Made of aluminum; covered with seal grain leather; trimmings polished brass, nickel plated; pictures $3\frac{1}{4} \times 5\frac{1}{2}$ inches; capacity 10 exposures; size of camera $2\frac{1}{8} \times 4\frac{7}{8} \times 9\frac{3}{8}$ inches; weight 39 ounces; Model 3, No. 2 Kodak Ball Bearing Shutter; Model 4, Kodak Automatic Shutter; Rapid Rectilinear Lens; rack and pinion; sliding front; two tripod sockets; brilliant reversible finder.

PRICE LIST

No. 3-A Folding Hawk-Eye, Model 3, with R. R. Lens and No. 2 Kodak Ball Bearing Shutter	\$ 20.00
No. 3-A Folding Hawk-Eye, Model 4, with R. R. Lens and Kodak Automatic Shutter	25.00
No. 3-A Folding Hawk-Eye, Model 3, with Compound Shutter and Zeiss Kodak Anastigmat lens <i>f</i> .6.3	57.90
Black Sole Leather Carrying Case, with shoulder strap	1.50
Non-Curling Film Cartridge, 6 exposures, $3\frac{1}{4} \times 5\frac{1}{2}$40
Non-Curling Film Cartridge, 10 exposures, $3\frac{1}{4} \times 5\frac{1}{2}$70
Hawk-Eye Portrait Attachment50
Glass Plate Adapter (only)	3.50
Double Glass Plate Holders for $3\frac{1}{4} \times 5\frac{1}{2}$ plates	1.00

NO. 4 FOLDING HAWK-EYE—*Model 3*



THIS camera makes 4 x 5 pictures, the largest of the very popular amateur sizes, and for those who prefer such pictures, it is indeed a remarkably compact and efficient instrument at a very moderate price, considering its equipment and capabilities.

It opens horizontally, the way most 4 x 5 pictures are composed, and the lens and shutter slide on a nicked runway, which is operated by rack and pinion for easy focusing. This advantage of focusing is particularly useful when the camera is used for plates, as may be easily done by securing a glass plate adapter.

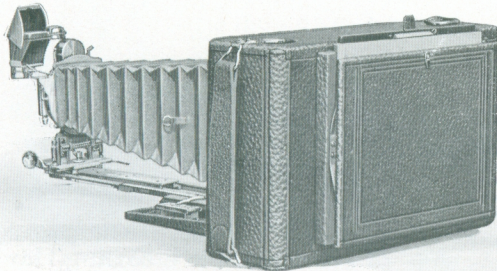
The illustration shows how this adapter is used, being interchangeable with the regular back. It has a ground glass for sharp focusing and takes double plate holders.

This camera is also supplied with both rising and sliding front for increasing or decreasing foreground, or making pictures of tall buildings and the like, without distortion. Double tripod sockets, brilliant reversible finder and automatic standard clamp are also provided.

The optical equipment is up to the usual Hawk-Eye standard. The Rapid Rectilinear Lens works at $f:8$, and receives a thorough test before and after being fitted to camera.

No. 4 FOLDING HAWK-EYE—*Model 3*

Of shutters, the camera offers the choice of either Kodak Ball Bearing or Kodak Automatic with Autotime scale; or, if the finest possible equipment is desired, the camera will accommodate the Compound Shutter and any desirable anastigmat lens.



Showing Plate Adapter attached to Camera

Every detail of this camera is carefully assembled; it has genuine leather covering of beautiful grain, nickeled fittings and is made of aluminum.

Like all Hawk-Eyes this model is very simple to understand and operate. It will produce good pictures in the hands of even the beginner.

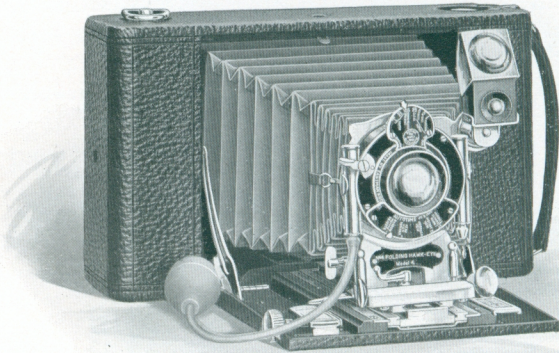
DETAILS: Made of aluminum, covered with seal grain leather, trimmings of polished brass, nickel plated; pictures 4 x 5 inches; capacity 12 exposures; size of camera 2 x 5 x 9½ inches; weight 43 ounces; Kodak Ball Bearing Shutter; R. R. Lens; rack and pinion for focusing; two tripod sockets and brilliant finder.

PRICE LIST

No. 4, Model 3, with Kodak Ball Bearing Shutter and R. R. Lens	\$ 20.00
No. 4, Model 3, with Kodak Automatic Shutter and R. R. Lens	25.00
No. 4, Model 3, with Zeiss Kodak Anastigmat Lens <i>f</i> .6.3, and Compound Shutter	57.90
Black Sole Leather Carrying Case, with shoulder strap	1.50
*Non-Curling Film Cartridge, 6 exposures, 4 x 545
*Non-Curling Film Cartridge 12 exposures, 4 x 590
Hawk-Eye Portrait Attachment50
Glass Plate Adapter	3.50
Double Plate Glass Holder	1.00

*In ordering Film specify No. 123.

NO. 4 FOLDING HAWK-EYE—*Model 4*



JUST as simple to operate as the preceding Hawk-Eyes and combining all their conveniences and advantages, this model has additional features which adapt it for a still wider range of work.

It is made with a bellows capacity of $13\frac{3}{4}$ inches, which length will accommodate the single combination of the special Rapid Symmetrical Lens with which the camera is fitted.

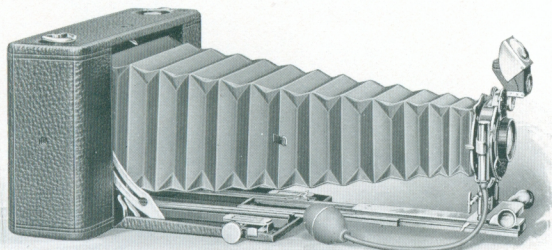
This feature is a great advantage in photographing objects at long range, for in using the single combination the subject of the picture, taken at any given point, will be just twice as large as the same subject taken at the same point with the double lens. Furthermore, special telephoto attachments may be used which will magnify the image up to four or five times the size obtainable with the ordinary doublet.

In addition, the long bellows draw in combination with the single lens makes the camera very useful for enlarging and copying, and for photographing flowers and other small objects at close range and for portraiture without the need of a Portrait Attachment.

This model is regularly fitted with Kodak Automatic Shutter and Autotime Scale, rack and pinion for focusing, rising and sliding front—in fact, every adjustment which could be expected in the finest type of hand camera.

No. 4 FOLDING HAWK-EYE—*Model 4*

The Shutter works for retarded speeds of from one to one one-hundredth of a second as well as for the usual time and bulb, and the Autotime Scale with which it is fitted automatically indicates the proper time of exposure under all possible conditions of outdoor photography.



This model will take plates by addition of a glass plate adapter, as illustrated on page 11, and it is certain to give satisfaction both in appearance and simple operation, as well as in the superior class of work which it will produce. Rigid, compact and beautifully finished, it will instantly appeal to those who wish the very best in hand camera construction.

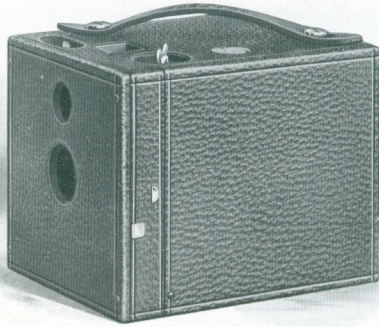
DETAILS: Made of aluminum; covered with seal grain leather; trimmings polished brass, nickel plated; pictures 4 x 5 inches; capacity 12 exposures; size of camera 2 $\frac{3}{4}$ x 5 $\frac{1}{2}$ x 9 $\frac{1}{4}$ inches; weight 53 ounces; Kodak Automatic Shutter; Rapid Symmetrical Lens; triple extension bed, 13 $\frac{3}{8}$ inches bellows draw; rack and pinion; rising front; two tripod sockets; brilliant reversible finder.

PRICE LIST

No. 4 Folding Hawk-Eye, Model 4, with Kodak Automatic Shutter and R. S. Lens	\$ 30.00
Ditto, with Zeiss Protar Series VIIA Lens No. 7 and Compound Shutter	105 30
Black Sole Leather Carrying Case, with shoulder strap	1.75
*Non-Curling Film Cartridge, 6 exposures, 4 x 545
*Non-Curling Film Cartridge, 12 exposures, 4 x 590
Hawk-Eye Portrait Attachment50
Glass Plate Adapter (only)	3.50
Double Glass Plate Holder for 4 x 5 plates	1.00

*In ordering Film specify No. 123.

No. 2 WENO HAWK-EYE



WHILE the box style of Hawk-Eye is, of course, not so compact as the folding types, it is very simple to operate, as it requires no focusing or estimating of distances, and will make excellent pictures under all ordinarily favorable conditions.

The No. 2 Weno Hawk-Eye has been a favorite with many photographers for the past fifteen years. It is very moderate in price, makes pictures of good size— $3\frac{1}{2} \times 3\frac{1}{2}$, loads in daylight and produces a very high average of results indeed.

While used by many of the most experienced photographers, it is especially suited for the beginner and young people, because of its unusually simple manipulation.

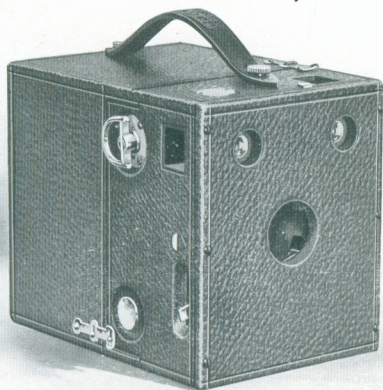
The camera is strongly built to last indefinitely and is neatly covered with leather.

DETAILS: Made of selected whitewood and cherry, covered with seal grain morocco leather; trimmings of polished brass, nickel plated; pictures $3\frac{1}{2} \times 3\frac{1}{2}$ inches; capacity 12 exposures; size of camera $4\frac{3}{8} \times 4\frac{3}{8} \times 6$ inches; weight 22 ounces; lens fixed focus Achromatic with rotary shutter and set of three stops; tripod socket and brilliant finder.

PRICE LIST

No. 2 Weno Hawk-Eye, with Achromatic Lens and Rotary Shutter . . .	\$ 5.00
Black Sole Leather Carrying Case, with shoulder strap	1.25
Non-Curling Film Cartridge, 6 exposures, $3\frac{1}{2} \times 3\frac{1}{2}$30
Non-Curling Film Cartridge, 12 exposures, $3\frac{1}{2} \times 3\frac{1}{2}$60
Weno Hawk-Eye Portrait Attachment50

NOS. 4, 5 AND 7 WENO HAWK-EYES



THOSE who prefer cameras of fixed focus—cameras of the very simplest type, which require no estimating of distances and are always ready for action, will find in these models such cameras for all the most popular sizes.

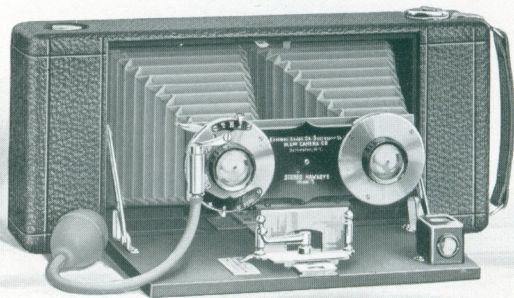
Each has automatic shutter with three diaphragm stops, tested meniscus lens, two tripod sockets and double finders. They load and unload in daylight and can be utilized to good advantage for home portraiture by addition of the Hawk-Eye Portrait Attachment. They are covered with leather and differ only in the size of the pictures they make.

DETAILS: Made of selected whitewood and cherry, covered with seal grain morocco leather; trimmings of polished brass, nickel plated; pictures, No. 4, 4 x 5 inches; No. 5, 3 $\frac{1}{4}$ x 4 $\frac{1}{4}$ inches; No. 7, 3 $\frac{1}{4}$ x 5 $\frac{1}{2}$ inches; capacity, Nos. 4 and 5, 12 exposures; No. 7, 10 exposures; size of camera, No. 4, 5 x 5 $\frac{1}{2}$ x 6 $\frac{3}{8}$ inches; No. 5, 4 $\frac{3}{8}$ x 5 $\frac{3}{8}$ x 6 $\frac{3}{8}$ inches; No. 7, 4 $\frac{1}{4}$ x 6 $\frac{3}{8}$ x 6 $\frac{3}{8}$ inches; weight, No. 4, 32 ounces; No. 5, 28 ounces; No. 7, 33 ounces; fixed focus Achromatic Meniscus lens with rotary shutter and set of three stops; tripod sockets and brilliant finders.

PRICE LIST

	No. 4 4 x 5	No. 5 3 $\frac{1}{4}$ x 4 $\frac{1}{4}$	No. 7 3 $\frac{1}{4}$ x 5 $\frac{1}{2}$
Weno Hawk-Eye, with Achromatic Lens and Rotary Shutter	\$8.00	\$7.50	\$8.00
Black Sole Leather Case, with strap	1.50	1.50	1.50
Non-Curling Film Cartridge, 6 exposures	.45	.35	.40
Non-Curling Film Cartridge, 10 exposures	.75		.70
Non-Curling Film Cartridge, 12 exposures		.70	
Weno Hawk-Eye Portrait Attachment	.50	.50	.50

STEREO HAWK-EYE—Model 5



ANYONE who has looked through a stereoscope must admire the beautiful visual effect of the depth, roundness, distance and perspective of the objects in the picture just as the eye actually sees them in life. And it is as easy for anyone to make such pictures with a Stereo Hawk-Eye as to make pictures with a single camera, for it is so simple in operation as to be easily understood by the merest beginner.

The Stereo Hawk-Eye, Model 5, is equipped with a matched pair of tested R. R. Lenses and single valve Stereo Shutter working for time, bulb and instantaneous exposures.

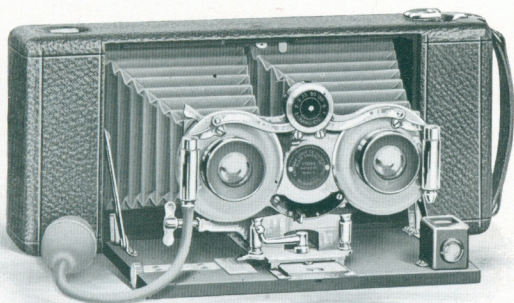
It is well made in every respect and thoroughly reliable.

DETAILS: Made of selected cherry and mahogany, all joints dovetailed; covered with seal grain leather; trimmings polished brass, nickel plated; pictures Standard Stereo size; capacity 6 Stereo exposures; size of camera $2\frac{1}{2} \times 4\frac{1}{2} \times 10\frac{1}{2}$ inches; weight 32 ounces; single valve Stereo Automatic Shutter; matched Rapid Rectilinear Lenses; tripod socket; brilliant finder.

PRICE LIST

Stereo Hawk-Eye, Model 5, R. R. Lenses	\$ 25.00
Black Sole Leather Carrying Case, with shoulder strap	1.50
Non-Curling Film Cartridge, 3 exposures, for Stereo, $3\frac{1}{2} \times 3\frac{1}{2}$.30
Non-Curling Film Cartridge, 6 exposures, for Stereo, $3\frac{1}{2} \times 3\frac{1}{2}$.60
Stereo Hawk-Eye Self-Transposing Printing Frame	1.50
Glass Plate Adapter	3.50
Double Glass Plate Holder for Stereo plates, $3\frac{1}{4} \times 6\frac{1}{2}$	1.25

STEREO HAWK-EYE—Model 6



THE idea of this model is to provide the best possible camera for stereo photography—one capable of producing satisfactory results where the ordinary camera would fail.

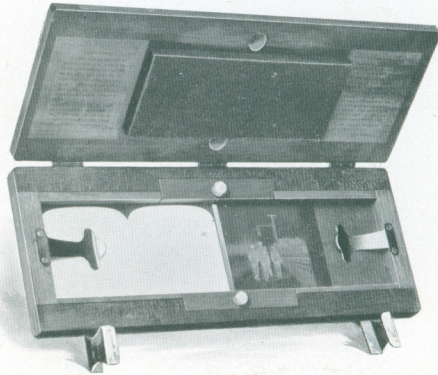
The camera is therefore supplied with both rising and sliding front, rack and pinion focusing attachment and double valve automatic shutter, which works not only for bulb and time exposures, but is also graduated for fractional parts of a second from 1 to $\frac{1}{100}$. The lenses are matched Rapid Rectilinear—the best obtainable. This model will take plates by addition of a glass plate adapter.

DETAILS: Made of selected cherry and mahogany, all joints dovetailed; covered with seal grain leather; trimmings polished brass, nickel plated; pictures Standard Stereo size; capacity 6 Stereo exposures; size of camera $2\frac{1}{2} \times 4\frac{1}{2} \times 10\frac{1}{2}$ inches; weight 40 ounces; double valve Stereo Automatic Shutter; matched Rapid Rectilinear Lenses; rising front; rack and pinion for focusing; tripod socket; brilliant finder.

PRICE LIST

Stereo Hawk-Eye, Model 6, R. R. Lenses	\$ 35.00
Stereo Hawk-Eye, Model 6, with Zeiss Kodak Anastigmat Lenses	77.05
Ditto, with Stereo Compound Shutter	85.55
Black Sole Leather Carrying Case, with shoulder strap	1.50
Non-Curling Film Cartridge, 3 exposures, for Stereo, $3\frac{1}{2} \times 3\frac{1}{2}$30
Non-Curling Film Cartridge, 6 exposures, for Stereo, $3\frac{1}{2} \times 3\frac{1}{2}$60
Stereo Hawk-Eye Self-Transposing Printing Frame	1.50
Glass Plate Adapter	3.50
Double Glass Plate Holder for Stereo plates, $3\frac{1}{4} \times 6\frac{1}{2}$	1.25

STEREO HAWK-EYE SELF-TRANSPOSING PRINTING FRAME



IN making Stereo prints it is necessary to transpose either the negatives before printing or the prints before mounting. The reason of this is that the lens throws the image on the film bottom side up, so when the negatives are viewed right side up the one on the right is the negative made by the left lens in the camera.

To correct this, the negatives or prints must be transposed; and to simplify such transposition, the Stereo Hawk-Eye Self-Transposing Printing Frame should be used. This frame is for film negatives only, and is not adapted for glass plates.

The use of the above illustrated frame makes Stereo printing as simple as any other, and the great drawback to making stereographs is removed.

The Stereo Self-Transposing Printing Frame does away with the trimming of the negatives, so the prints made from them seem as one picture when viewed through the stereoscope, and with the use of die-cut paper all trimming of the print is done away with.

Price \$1.50

SPECIAL EQUIPMENTS

For the best possible pictures under all conditions, an anastigmat lens equipment is necessary. For instance, in instantaneous work a first-class R. R. lens admits sufficient light on clear, bright days to obtain well timed exposures as fast as $\frac{1}{100}$ of a second; but in dull lights, snap shots are impossible. Whereas, with an anastigmat lens, the construction and optical corrections are such that it will produce satisfactory pictures at a larger aperture. The larger opening admits more light by about 60%. Hence snap shots can be made with an anastigmat on dull days, or even indoors under favorable light conditions, where little or no impression could be obtained with an R. R. lens. To obtain this advantage and others, Hawk-Eyes may be had with anastigmat equipments.

Folding Hawk-Eyes Fitted with Anastigmat Lenses and No. 0 Compound Shutter (highest speed $\frac{1}{200}$ second), as follows:

No. 1-A Model 1 with No. 1 Zeiss Kodak Anastigmat Lens . . .	\$45.80
No. 1-A Model 1 with No. 3 Tessar Lens, Series II-b	56.80
No. 3 Model 8 with No. 2 Zeiss Kodak Anastigmat Lens	48.90
No. 3 Model 8 with No. 4 Tessar Lens, Series II-b	61.40

Folding Hawk-Eyes Fitted with Anastigmat Lenses and No. 1 Compound Shutter (highest speed $\frac{1}{200}$ second), as follows:

No. 3-A Model 3 with No. 3 Zeiss Kodak Anastigmat Lens . . .	\$57.90
No. 3-A Model 3 with No. 5 Tessar Lens, Series II-b	66.90
No. 4 Model 3 with No. 3 Zeiss Kodak Anastigmat Lens	57.90
No. 4 Model 3 with No. 5 Tessar Lens, Series II-b	66.90
No. 4 Model 4 with No. 7 Zeiss Protar Lens, Series VII-a . . .	105.30

Stereo Hawk-Eyes Fitted with Anastigmat Lenses and No. 0 Stereo Compound Shutter (highest speed $\frac{1}{200}$ second), as follows:

Stereo Model 6 with No. 2 Zeiss Kodak Anastigmat Lenses . . .	\$ 85.55
Stereo Model 6 with No. 4 Tessar Lenses, Series II-b	110.55

Stereo Hawk-Eyes Fitted with Anastigmat Lenses and B. & L. Stereo Automatic Shutter as follows:

Stereo Model 6 with No. 2 Zeiss Kodak Anastigmat Lenses . . .	\$ 77.05
Stereo Model 6 with No. 4 Tessar Lenses, Series II-b	102.05

THE KODAK METAL TRIPOD



Combining light weight and compactness with exceptional rigidity, this is an ideal tripod for cameras up to 5 x 7.

Has telescoping legs of brass tubing—lower ones nickelled—the upper black enameled, and should a part become inoperative through wear or accident, any section may be removed for repairs. This is a unique feature among metal tripods.

When extended each section catches and holds firmly. To close, it is necessary to press in top catch only, the others then releasing automatically.

The Nos. 1 and 2 have revolving heads for attaching to camera. With this construction the camera may be swung so as to take in the desired view without moving the tripod, a distinct advantage over other types of metal tripods.

The Nos. 1 and 2 also have straps for holding the legs in place when closed.

	Sections Closed	Length Extended	Weight	Price
Kodak Metal Tripod No. 0 . . .	3	15½ in.	39½ in.	15 ozs. \$1.60
Kodak Metal Tripod No. 1 . . .	4	15 in.	48½ in.	24½ ozs. 2.50
Kodak Metal Tripod No. 2 . . .	5	13½ in.	49½ in.	25 ozs. 3.25
Leather Carrying Case for Nos. 1 and 2				1.50

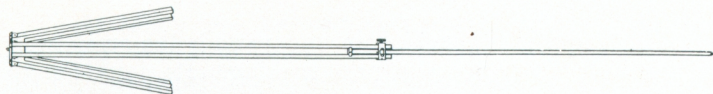
EASTMAN TRIPOD



The Eastman Tripod is of the combination type, light and compact. It is beautifully finished in natural color with trimmings of lacquered brass. Furnished with metal or wood head as desired. Adapted for any camera up to and including the 5 x 7 size.

Weight, 30 ounces Length, 21 to 56 inches Price, \$1.70

FLEXO TRIPOD

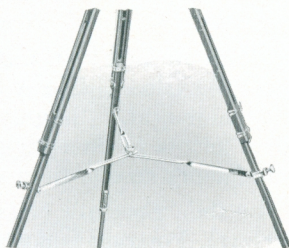


Although very light this tripod is rigid. The top not being removable the tripod is always ready for use. Made of straight grained spruce and designed for cameras up to and including the 5 x 7 size.

Weight, 17 ounces Length, 29½ to 54 inches Price, \$.90

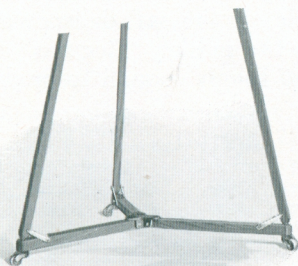
EASTMAN TRIPOD BRACE

Out of doors, or indoors when the R. O. C. Tripod Truck is not used, this is an excellent attachment for holding tripod legs in position. Made entirely of metal, it can be instantly attached, and even when tripod is lifted the legs cannot collapse or change their position.



Eastman Tripod Brace \$1.00

R. O. C. TRIPOD TRUCK



For flash-light work, home portraiture, in fact, any branch of indoor photography, this truck is a very great convenience. It holds the tripod legs firmly in place and there is no danger of slipping nor of tripod spikes marring floors or rugs. Can be easily moved on its casters to any part of room, and folds up compactly when not in use.

No. 1, for average Tripods, \$1.00; No. 2, for very heavy Tripods, \$1.25

VELOX PAPER

Velox requires no dark room and permits the amateur to utilize his evening hours in print making. Its simplicity of manipulation and extreme graduation make it suitable for photographic work of every sort.

Velox prints in any light and is divided broadly into two kinds of paper called "Regular" and "Special" (slow and fast), each division containing a variety of surfaces. "Regular" papers develop quickly and are best suited for negatives lacking contrast. "Special" papers develop slowly, and give soft effects from hard negatives. Use "Special" Velox for negatives producing good results on "Printing Out" paper (such as Solio), and "Regular" only with very flat negatives.

Velox surfaces: In the "Regular" class are Carbon (matte surface), Glossy, Glossy double weight, Velvet, and Velvet double weight. "Regular" Velvet Velox is semi-gloss and gives prints of exceptional beauty. This paper will give satisfactory results from very flat negatives.

In the "Special" class, the surfaces are Carbon (matte surface), Portrait (smooth matte), Portrait double weight, Rough, Rough double weight, Glossy, Glossy double weight, Velvet, and Velvet double weight.

"Special" Velvet Velox has a greater range than any of the other "Special" papers.

Royal Velox is coated on a soft, mellow-tinted stock, which when re-developed affords all the soft delicacy of a rare old etching. It is made in two grades, "Regular" and "Special," and one surface, just rough enough to produce the desired effect.

PRICES

Size	SINGLE WEIGHT			DOUBLE WEIGHT		
	Doz.	½ Gross	Gross	Doz.	½ Gross	Gross
2½ x 4¼	\$0.15	\$0.70	\$1.25	\$0.20	\$0.90	\$1.55
3½ x 3½15	.80	1.50	.20	1.00	1.90
3¼ x 4¼15	.80	1.50	.20	1.00	1.90
3¼ x 5½15	.80	1.50	.20	1.00	1.90
4 x 525	1.10	2.00	.30	1.40	2.50
Velox Post Cards20	1.10	2.00
N. A. (Non-abrasion) Velox Liquid Developer, 4-ounce bottle						
						\$0.25
Nepera Solution, per 4-ounce bottle						
						.20
Velox Re-Developer for Sepia Tones, 4-ounce bottle						
						.50
Velox Liquid Hardener, per 4-ounce bottle						
						.15

VELOX TRANSPARENT WATER COLOR STAMPS

These colors are the simplest of all to use, working especially well with Velox. Prepared in twelve shades, in the form of paper leaves, divided by perforations into small sections of proper size for use and the leaves bound into neat booklets, each color being preceded by a descriptive page.

Velox Transparent Water Color Stamps, complete booklet, 12 colors	\$0.25
Separate color leaves, two sheets05
Set of 3 special brushes, per set50

AZO DEVELOPING-OUT PAPER

	2 Doz.	Gross
Die Cut for Stereo Prints	\$0.25	\$1.10

SOLIO PRINTING-OUT PAPER

Brilliant high lights, silky half-tones, rich, transparent shadows.

	2 Doz.	Gross		2 Doz.	Gross
2½ x 4¼	\$0.20	\$.90	3¼ x 5½	\$0.25	\$1.25
3½ x 3½20	1.15	4 x 525	1.25
3¼ x 4¼20	1.15			

GLASS DRY PLATES

SEED	Per Doz.	SEED NON-HALATION ORTHO.	Per Doz.
3½ x 3½	\$0.40	3¼ x 4¼	\$0.55
3¼ x 4¼45	3¼ x 5½80
3¼ x 5½65	4 x 580
4 x 565	4¼ x 6½	1.10
4¼ x 6½90	5 x 7	1.40
5 x 7	1.10	Cover Glass for Lantern Slides25
Lantern Slide Plates45		
Lantern Slide Binders, per package, 50 strips			\$0.10

TESTED CHEMICALS

Eastman's Hydrochinon Developer Powders, per dozen	\$0.50
Ditto, per ½ dozen25
Eastman's Pyro Developer Powders, per dozen50
Ditto, per ½ dozen25
Elon, per 1-ounce bottle50
Hydrochinon, per 1-ounce bottle15
Hypo Sulphite of Soda, pulverized, per pound08
Alum, powdered, per pound10
Kodak Acid Fixing Powder, per pound package25
Ditto, per ½-pound package15
Ditto, ¼-pound package10
Potassium Bromide, per ounce12
Acetic Acid, 25 per cent., per pound bottle18
Solio Toning Solution, per 8-ounce bottle50
Solio Hardener, per 8-ounce bottle35
Eastman's Tested Carbonate of Soda (desiccated), per 1-pound bottle20
Eastman's Tested Sulphite of Soda (desiccated) per 1-pound bottle30

HAWK-EYE PORTRAIT ATTACHMENTS

This little attachment, fitted to a Hawk-Eye camera, will enable one to work up close to the subject and thereby secure bust portraits of excellent quality. The attachments are simply extra lenses, which slip on in front of the regular lens, and they in no way affect the operation of the instrument, excepting to make the lens cut sharp at short distances.



Please order by number; or, if for models not listed in this catalogue, specify size of camera and exact style of shutter.

PRICES

No. 3, for No. 1-A Folding Hawk-Eye, No. 3 Folding Hawk-Eye, Model 7, and No. 5 Stereo Hawk-Eye	\$0.50
No. 4, for Nos. 2, 4, 5 and 7 Weno Hawk-Eye50
No. 5, for No. 3 Hawk-Eye, Model 8, No. 3-A, Models 3 and 4, No. 4, Models 3 and 4, and Stereo Hawk-Eye, Model 650

COLOR SCREENS

These screens are of great value in outdoor photography, and for all subjects embracing colors which act weakly on the sensitive film. Mounted like the Portrait Attachment.

PRICES

No. 3, for No. 1-A Folding Hawk-Eye, No. 3 Folding Hawk-Eye, Model 7, and No. 5 Stereo Hawk-Eye	\$0.75
No. 4, for Nos. 2, 4, 5 and 7 Weno Hawk-Eye75
No. 5, for No. 3 Hawk-Eye, Model 8, No. 3-A, Models 3 and 4, No. 4, Models 3 and 4, and Stereo Hawk-Eye, Model 6	1.00



EASTMAN FILM NEGATIVE ALBUMS

A strong dust proof container for film negatives with ruled space in front for indexing negatives.

PRICES

For 100 negatives, $3\frac{1}{2} \times 3\frac{1}{2}$, or smaller	\$0.75
For 100 negatives, $3\frac{1}{2} \times 4\frac{1}{4}$, or 4×5	1.00
For 100 negatives, $3\frac{1}{2} \times 5\frac{1}{2}$, or smaller	1.00

THE EASTMAN FLASH SHEET HOLDER



The safest and most convenient method of flashlight photography is in the use of Eastman Flash Sheets with the Eastman Flash Sheet Holder.

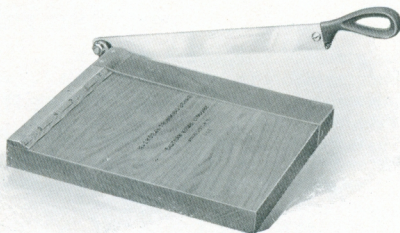
The sheet is held in place by a spring finger, and the holder may be held always between the sheet and the operator, either with hand or on a tripod, a tripod socket being provided for this purpose.

When all is ready the flash is set off by touching a match from the back to its lower corner, through a small aperture.

Eastman Flash Sheet Holder	\$1.00
Eastman Flash Sheets, No. 1, per package, $\frac{1}{2}$ doz. sheets, 3 x 425
Eastman Flash Sheets, No. 2, per package, $\frac{1}{2}$ doz. sheets, 4 x 540
Eastman Flash Sheets, No. 3, per package, $\frac{1}{2}$ doz. sheets, 5 x 760

KODAK TRIMMING BOARD

A thoroughly reliable trimming board at a moderate price, constructed of hard wood with natural finish. The blade is of the best steel and a rule is fitted to the board for measuring prints.



No. 1, 5 x 5 in.	\$0.40
No. 2, 7 x 7 in.60
Transparent Trimming Gauge for either (extra)20

DEVELOPING TRAYS

Bulls-Eye Composition, $3\frac{1}{2}$ x $4\frac{1}{2}$	\$0.12
Bulls-Eye Composition, 4 x 515
Bulls-Eye Composition, 4 x 615
Bulls-Eye Composition, 5 x 725
Paper, 4 x 510
Paper, 5 x 715
Eastman Enameled, $4\frac{3}{8}$ x $5\frac{3}{8}$25
Eastman Enameled, 4 x 625
Eastman Enameled, $5\frac{1}{4}$ x $7\frac{3}{8}$50

THE KODAK CANDLE LAMP



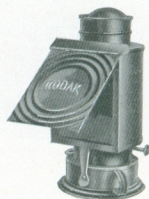
This lamp is well made, collapsible, of special tested ruby fabric, bound in metal frames.

Kodak Candle Lamp \$0.25
Extra Candles for same, per dozen .30

NO. 2 KODAK DARK ROOM LAMP

Oil burning, fitted with both orange and ruby glass.

No. 2 Kodak Dark Room Lamp \$1.00



KODAK DRY MOUNTING TISSUE

Mounts prints even on thin mounts without curl, no apparatus being required—just the tissue and a flatiron.

PRICES

Size, 3½ x 3½, 3 dozen . . . \$0.10	Size, 4 x 5, 2 dozen . . . \$0.10
Size, 3½ x 4½, 3 dozen10	Size, 4½ x 6½, 1 dozen10
Size, 3½ x 5½, 2 dozen10	Size, 5 x 7, 1 dozen10

PRINTING FRAMES

Eastman's 3½ x 3½, opens two-thirds	\$0.25
Eastman's 3½ x 4½, opens two-thirds25
Eastman's 3½ x 5½, for films, opens two-thirds25
Ditto, for plates25
Eastman's 4 x 5, opens two-thirds25
Stereo Self-Transposing Printing Frame, for making 3½ x 2½ stereo prints without cutting negatives apart. See page 18 . . .	1.50

A. B. C. DEVELOPING AND PRINTING OUTFIT

For 4 x 5 or smaller pictures

1 Kodak Candle Lamp, 25c.; 1 4 x 5 Printing Frame, 25c.; 1 4 x 5 Glass for Frame, 5c.; 1 4-ounce Graduate, 15c.; 1 Stirring Rod, 5c.; 4 Developing Trays, 40c.; 5 Tubes Eastman's Special Developer, 25c.; ½ pound Kodak Acid Fixing Powder, 15c.; 1 package Bromide Potassium 5c.; 2 dozen Velox Paper, 50c.; 2 ounces Nepera Solution, for developing Velox, 10c.; Instruction Book, 10c. These articles if purchased separately would cost \$2.30. Price, complete, neatly packed, \$1.50.

Eastman 3-A Outfit, similar to above but providing for 3½ x 5½ prints \$1.50

Eastman Bull's-Eye Developing and Printing Outfit complete, for developing and printing 12 pictures 3½ x 3½. Similar to above outfit. Price, complete, neatly packed 1.25

ALBUMS



THE UNIVERSAL ALBUM

(Patent Applied For)

Made on a new principle, which does away with mounting prints by paste or otherwise. They are merely slipped into pocket strips at top and bottom, and will not come out unless removed by hand. Handsome grain leather cover and black leaves with linen finish.

A, 2 $\frac{1}{4}$ x 3 $\frac{1}{4}$, 25 leaves, 3 on . . . \$2.25	E, 3 $\frac{1}{4}$ x 5 $\frac{1}{2}$, 50 leaves, 3 on . . . \$3.50
B, 2 $\frac{1}{2}$ x 4 $\frac{1}{4}$, 25 leaves, 3 on . . . 2.50	F, 4 x 5, 25 leaves, 2 on . . . 2.60
C, 3 $\frac{1}{4}$ x 4 $\frac{1}{4}$, 25 leaves, 3 on . . . 2.50	G, 4 $\frac{1}{4}$ x 6 $\frac{1}{2}$, 25 leaves, 2 on . . . 2.75
D, 3 $\frac{1}{4}$ x 5 $\frac{1}{2}$, 25 leaves, 3 on . . . 2.75	H, 5 x 7, 25 leaves, 2 on . . . 3.00

THE FORUM ALBUM

Flexible, black leather embossed cloth cover

A, 25 black leaves, or N, 25 Sepia leaves, 5 $\frac{1}{2}$ x 7 \$0.35	B, 25 black leaves, or O, 25 Sepia leaves, 7 x 1050
C, 25 black leaves, or P, 25 Sepia leaves, 10 x 750	D, 25 black leaves, or R, 25 Sepia leaves, 11 x 14 1.25
E, 50 black leaves, 5 $\frac{1}{2}$ x 750	F, 50 black leaves, 7 x 1075
G, 50 black leaves, 10 x 775	H, 50 black leaves, 11 x 14 1.50

CARD MOUNTS

BEVPLANE—Carbon Black and Scotch Grey

For Prints	Size of Mount	Per 100	Per 50	For Prints	Size of Mount	Per 100	Per 50
1 $\frac{5}{8}$ x 2 $\frac{1}{2}$	3 $\frac{1}{4}$ x 4 $\frac{1}{4}$	\$.60	\$.30	4 x 5	5 $\frac{1}{2}$ x 6 $\frac{1}{2}$	\$.90	\$.45
2 $\frac{1}{4}$ x 3 $\frac{1}{4}$	4 x 5	.60	.30	4 $\frac{1}{4}$ x 6 $\frac{1}{2}$	5 $\frac{3}{4}$ x 8	1.55	.80
2 $\frac{1}{2}$ x 4 $\frac{1}{4}$	4 $\frac{1}{4}$ x 6	.80	.40	5 x 7	7 x 9	1.70	.85
3 $\frac{1}{2}$ x 3 $\frac{1}{2}$	5 x 5	.80	.40	2 $\frac{1}{4}$ x 7	4 x 8 $\frac{3}{4}$.90	.45
3 $\frac{1}{4}$ x 4 $\frac{1}{4}$	5 x 6	.85	.45	3 $\frac{1}{2}$ x 12	5 $\frac{3}{8}$ x 13 $\frac{3}{4}$	1.80	.90
3 $\frac{1}{4}$ x 5 $\frac{1}{2}$	4 $\frac{3}{4}$ x 7	.90	.45				

THE BALTIC—Buff, Brown or Grey

Heavy stock, beveled edges, heavy borders—a beautiful, rich mount.

No.	For Prints	Size Outside	Per 100	Per 50	No.	For Prints	Size Outside	Per 100	Per 50
1	2 $\frac{1}{4}$ x 3 $\frac{1}{4}$	4 $\frac{3}{8}$ x 5 $\frac{3}{8}$	\$1.10	\$.55	3A	3 $\frac{1}{4}$ x 5 $\frac{1}{2}$	5 $\frac{3}{8}$ x 8	\$1.55	\$.80
1A	2 $\frac{1}{2}$ x 4 $\frac{1}{4}$	4 $\frac{1}{2}$ x 6 $\frac{1}{4}$	1.25	.65	4	4 x 5	6 x 7	1.65	.85
2	3 $\frac{1}{2}$ x 3 $\frac{1}{2}$	5 $\frac{1}{2}$ x 5 $\frac{1}{2}$	1.25	.65	4A	4 $\frac{1}{4}$ x 6 $\frac{1}{2}$	6 $\frac{1}{2}$ x 8 $\frac{3}{4}$	2.20	1.10
3	3 $\frac{1}{4}$ x 4 $\frac{1}{4}$	5 $\frac{1}{8}$ x 6 $\frac{1}{8}$	1.35	.70	5	5 x 7	8 x 10	2.75	1.40

STEREO MOUNTS

Size of Mount, 3 $\frac{1}{2}$ x 7; color, Queen's Grey; per 100, \$0.45; per 50 \$0.25

PRICE LIST FOR DEVELOPING AND PRINTING ON VELOX PAPER

Size		Dev. and Printing Per Roll		Dev. Only Per Roll	Printing Only Each Exposure			
		Mtd.	Unmtd.		Mtd.	Unmtd.		
2½ x 4¼	}	(12 ex.)	\$1.50	\$1.38	\$0.70	\$0.08	\$0.07	
3½ x 3½			.75	.69	.35			
3¼ x 4¼								
3¼ x 4¼								
3¼ x 5½	}	(10 ex.)	1.50	1.40	.80	.10	.09	
3¼ x 5½			.90	.84	.50			
4 x 5	}	(12 ex.)	1.80	1.68	1.00	.10	.09	
4 x 5			.90	.84	.50			
5 x 7	}	(6 ex. only)	1.20	1.05	.60	.12½	.10	
Stereo			(6 ex.)	1.50	1.38	.72	.16	.14
				(3 ex.)75	.69	.36	.16

Unmounted prints are furnished unless otherwise specified in order.

“Double Weight” prints will be billed at mounted rates.

No orders executed for less than \$0.25.

All prints are mounted with “Kodak Dry Mounting Tissue,” and therefore do not curl.

ENLARGEMENTS

Size	Each	Per Doz.	Size	Each
4¼ x 6½, on card . . .	\$0.35	\$3.00	10 x 12, on card	\$1.00
6½ x 8½, on card50	5.00	11 x 14, on card	1.25
8 x 10, on card75		14 x 17, on card	1.50
Lantern Slides50	5.00	Larger sizes in proportion.	

No extra charge for Sepia Tones. Small extra charge for double or triple mounting.

Where the kind of paper is not specified, we use our own judgment.

TERMS

The prices in this catalogue are strictly net, except to regular dealers who carry our goods in stock. For the convenience of our customers we recommend that they make their purchases from a dealer in photographic goods, as by so doing they can save both time and express charges.

BLAIR CAMERA DIVISION

EASTMAN KODAK CO.

ROCHESTER, N. Y.



ANDREW J. LLOYD COMPANY

315 WASHINGTON ST. }
310 BOYLSTON ST. } BOSTON
75 SUMMER ST. }

1252 MASSACHUSETTS AVE., CAMBRIDGE
230 ESSEX ST., SALEM