

Wyko Projector Corp.

33 West 60th Street

New York, N. Y.

The

SEPT

Motion Picture Hand
Camera



Wyko Projector Corp.

33 W. 60th Street

New York

Sept Hand Camera

Motion Pictures

Directions For Use

NOTE

These directions fit alike either the
Single Spring or *Double Spring* Sept.

THE "SEPT" CAMERA

This Camera is specially made for ordinary photography as well as kinematography.

The movement of the film and shutter is entirely automatic, and the whole fabrication of the Camera is of the finest quality.

The "SEPT" is made of metal throughout, and is composed of two parts:

1. *The main body*, containing all the necessary movements to obtain still and animated photographs, and worked by:

2. *The mechanism*, which regulates all these movements, and is contained in an outer case fastened on to the main body by four screws, thus making it easily detachable by hand.

The finish of the "SEPT" Camera is perfect. Each piece is accurately adjusted. For this reason it is never necessary to use force in adapting or putting in place any of the parts.

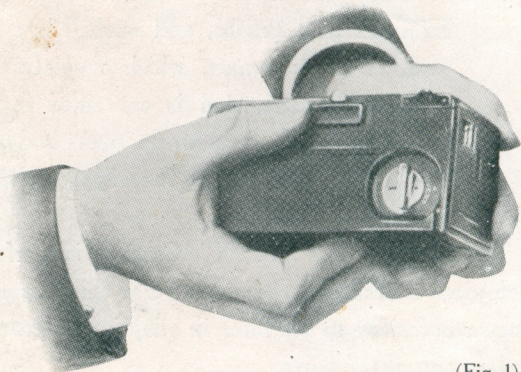
Note the instructions carefully

There will be no difficulty or hitch in loading if the instructions given here are carefully carried out. An attentive study of the diagrams added to the instruction, should be made.

The numbers placed in inverted commas "--" refer to the numbers on the diagrams.

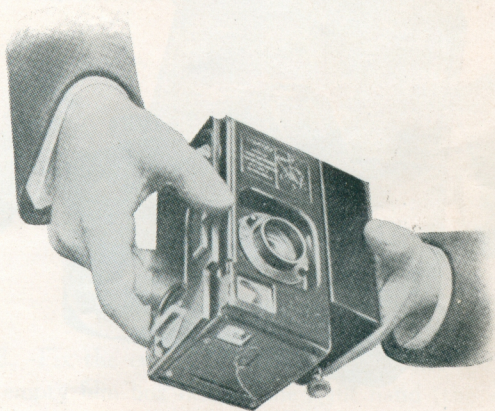
LOADING THE CAMERA

1. Open the Camera by pushing up the sliding catch "7" the word "ouvert" (open) appears (Fig. 1).



(Fig. 1)

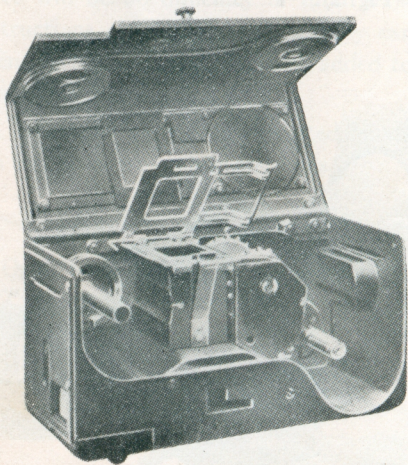
2. Hold the Camera firmly and open it by pressing on the catch and turning the Camera on the axis of the hinge (Fig. 2).



(Fig. 2)

3. Place the Camera, lense downwards, on a table or other flat support, the open side towards you (Fig. 3).

4. Release and open the gate "16" by slowly pulling the catch "17" towards you.



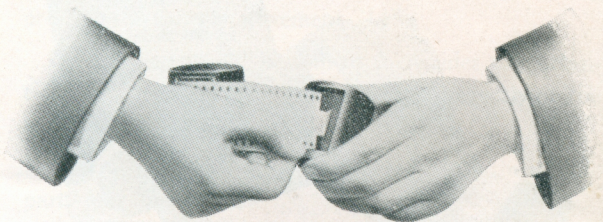
(Fig. 3)

5. Take a loaded film box and tear off the safety band (band protector).

6. Take an empty film box containing a center bobbin "31" and place this latter in such a position

that the notch of the bobbin "32" is opposite the opening for the passage of the film "30".

7. Take a loaded film box in the left hand (the word "SEPT" towards you), holding the folded edge of the film between the thumb and the first finger.



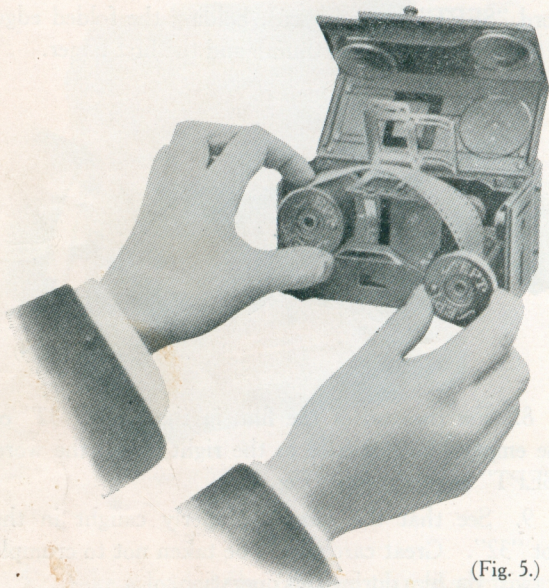
(Fig. 4)

8. Fix the end of the film in the notch "32" of the empty film box held in the right hand (the word "SEPT" towards you) (Fig. 4).

9. See that the film is properly caught in the slot "32". Great care should be taken not to crumple or twist the film during this operation.

10. When the film boxes are ready, take the full one in the left hand and the empty one in the right hand. Place the boxes on their axles so that a section

of the film lies between the gate channel "18" and the gate "16" as shown in Figure 5.



(Fig. 5.)

Press the boxes right home and make sure that they are in their correct position and cannot turn. A

button "23" at the end of the axles "19-21" prevents this when the boxes are properly placed.

When this is done correctly, each stop "28" on the film boxes should be opposite the white spot "25".

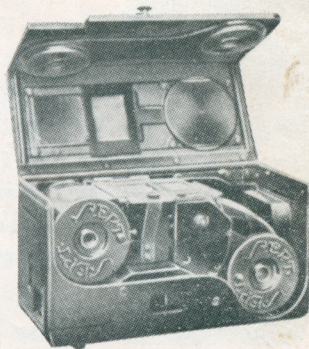
11. Tighten the film either by turning the bobbin of the open film box (turning from you) or by slightly pressing the shutter movement "14".

12. When fixing the film in the guides pay attention to see that the perforations register correctly on the sprocket wheel "20".

13. Close the gate by pressing lightly on the middle part, just opposite the spring "17" (Fig. 6).

14. Set the measuring dial "10" to zero, by turning the cogged wheel until the red mark shows.

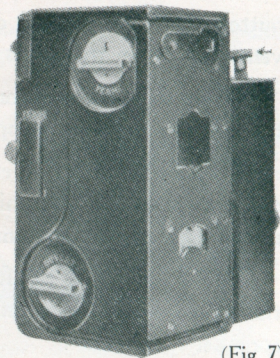
15. Turn the keys of the film boxes "8", until the white mark appears in the circular opening "22".



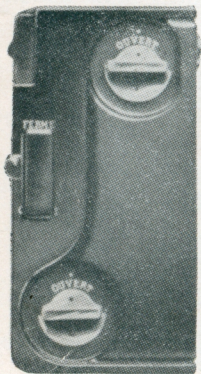
(Fig. 6.)

In this position the key (N° 1) shows the word "Fermé" (closed), and the key (N° 2) shows the word "ouvert" (open)

16. Shut the hinged side of the camera and secure it by sliding the catch "7" until the word "fermé" (shut) appears.



(Fig. 7)



(Fig. 8)

17. Make sure that the sliding shutter over the measuring dial "10" is closed properly (Fig. 7).

18. Turn the key N° 1, as far as it will go, from left to right, until it is stopped by the button; then, turn it back slowly a little. This will open the film box, inside, and allow the passing of the film (Fig. 8).

**The camera is now
ready for use.**

Unloading the Camera

When a film has been taken (or turned) and it is found necessary to open the Camera by daylight:

1. Let the mechanism run down completely, in order to make sure that the film has all passed into the receiving box.
2. Turn the key N° 2 from left to right until it is stopped by the button.

This closes the film box containing the photographs, and so prevents the film from fogging. The Camera can then be opened by daylight to take out the photographed film, and reloaded anew.

Loading of the film Boxes

The film boxes must be loaded in a dark room.

1. Take an empty film box, separate the two parts "26" and "27" from each other.
2. Take the film out of its packing and put it

in the inner cylinder of the box "26", inserting the bobbin so that the longer section of the brass tube projects out of the film box from the side on which is inscribed the word 'SEPT'.

3. Slide the outer cylinder of the box over the inner, so that the two edges of the centre bobbin enter right into the holes; then, make the two side openings of the two parts of the box coincide exactly.

Pull out the film until it will nearly go round the circumference of the box.

Turn the film box cover half round, from right to left, so that the button comes in front of the indication marked on the outside of the box.

The loaded film box can thus be exposed to the light without danger.



TAKING PICTURES

To make sure that the Camera is ready for use, the mechanism must be wound up perfectly by turning the key "13" from right to left.

It is advisable to wind up the mechanism every time that the Camera is used.

When the Camera is not to be used for a long time, let the machinery run down to avoid unnecessary strain on the spring.

If the mechanism requires to be run down whilst the Camera is loaded, disconnect it by unscrewing the four screws "13". Run out the spring by pressing the button "14", and then connect the mechanism again.

Focussing

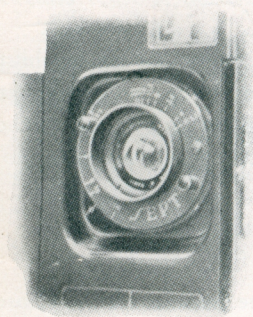
The distance gradations are marked on the Lense frame (Fig. 9).

When the mounting is screwed in as far as it will go, the white spot marked on the apparatus corresponds with "infinite" (gradation ∞ marked upon the mounting).

For other distances unscrew the Lense until the corresponding number is in front of the distance required.

Important.—Do not unscrew the Lense more than half round.

The diaphragm is regulated by turning the Lense hood “6” and is shown by numbers.



(Fig. 9)

viewfinder guide “3”.

The same shutter is used for kinematography, pose,

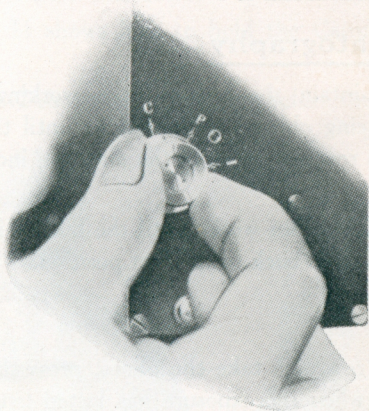
Instantaneous and cinematographic exposure is $1/60$ th of a second.

The Lense, of the finest quality, has an opening of F. 3.5 and a Focus of 50 m/m (2”).

The view finder “1” can be used either by reflection, by means of the reflector “2”, or directly through the

or ordinary snapshots; the exposure indicator regulates each movements as follows:

- C. For cinematography.
- P. For pose.
- I. For instantaneous.



(Fig. 10)

To set the indicator, pull it out and turn in to the letter corresponding to the movement or exposure required.

HOW TO USE THE CAMERA

The mechanism is worked by pressing the button "14".

Press the button right down every time.

Kinematography

To maintain the button in a working position without being obliged to hold it so until the end of the film is reached, press in the direction indicated by the arrow (Fig. 7).

The mechanism works until the button is released and then comes back to the first position.

Pose

When ready to take the photo, press the button: release it when the exposure has lasted long enough.

Long exposures can be made by fixing the button as indicated above.

Instantaneous

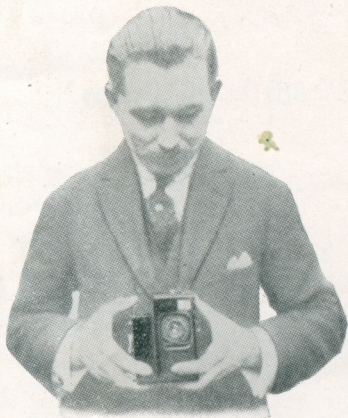
Press the button as far as it will go, and then release it.

HOW TO HOLD THE CAMERA

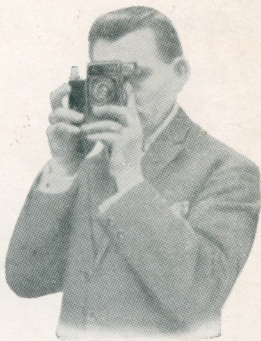
This Camera is made to be used without a tripod. It is very easy to find a steady position. This is absolutely necessary, just as in ordinary photography, in order to get good pictures.

Figure 11 shows how to hold the Camera breast high.

Figure 12 shows how to hold it before the eye.



(Fig. 11)



(Fig. 12)

Keeping up of the "SEPT" Camera

Do not disconnect any part of the Camera. You are liable to spoil the works.

Liberate the mechanism at the end of the day. For this operation separate the mechanism from the Camera and press the button before connecting this mechanism again.

Clean the Camera occasionally, as the film always leaves some fragments and chips which, in accumulating, might disturb the working.

This must be made with a very soft and flexible brush.

To clean the lense on back-side:

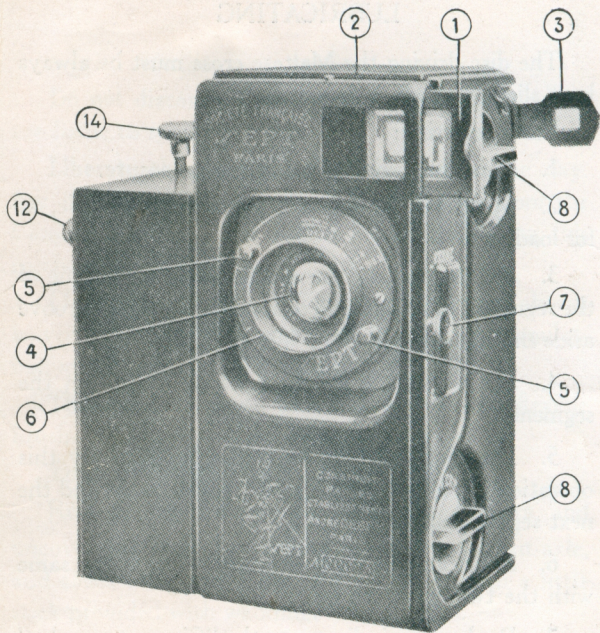
Remove the mechanism, open the Camera and uncover the lense by turning on the movement-axle, and clean with a neat and dry brush, or with a little stick provided with wadding.

LUBRICATING

The disc driving the Maltese cross must be always kept slightly oiled.

For lubricating:

1. Turn the indicator to "Time" exposure.
2. Open the Camera and put it upon a table, as for loading.
3. Fix the button, the shutter is open and one of the segments to be lubricated, appears before the groove aside the counter-rod.
4. Let a drop of sewing machine oil fall on the segment.
5. Disengage and fix anew the button. By this operation the lubricated segment moves away, and the next segment appears.
6. Lubricate the other segment, and do the same with the two other segments.
7. Replace the indicator to the "Cinematography" position, and let the mechanism run for a few turns.
— The mechanism is thus lubricated —
8. Wipe every part of the Camera coming in touch with the film.



1: *View finder*

2. *Reflector*

3. *View finder guide*

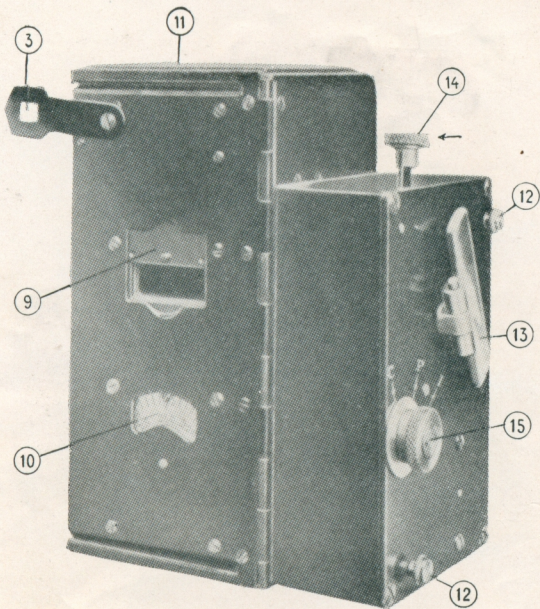
4. *Lense*

5. *Finger nobs*

6. *Lense hood*

7. *Sliding catch*

8. *Keys of magazine*



9. *Sliding shutter*

10. *Measuring dial*

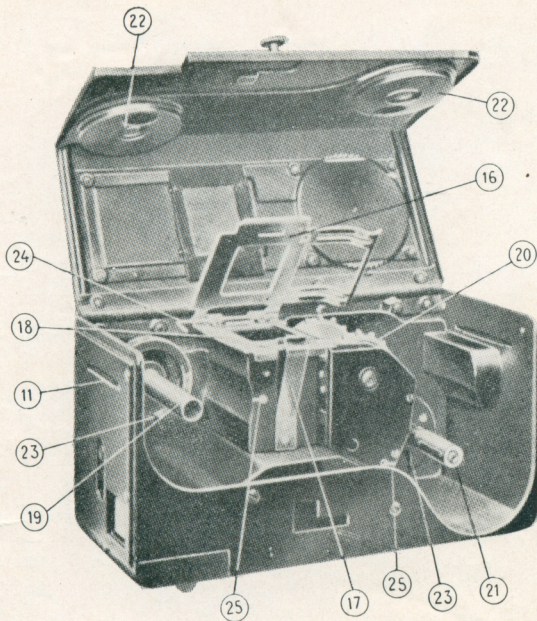
11. *Printing slots*

12. *Connecting screws*

13. *Spring key*

14. *Shutter movement*

15. *Indicator*



16. Gate

17. Gate latch

18. Gate channel

19. Axles

20. Sprocket wheel

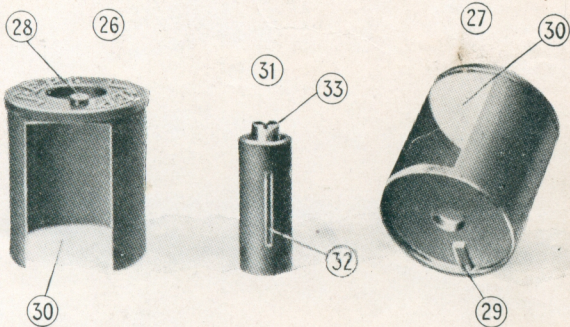
21. Axles

22. Circular opening

23. Groove

24. Hinge of the catch

25. White spot



26. Cover

27. Film-box

28. Magazine nob

29. Catch

30. Side opening

31. Bobbin

32. Slot

33. Copper tub