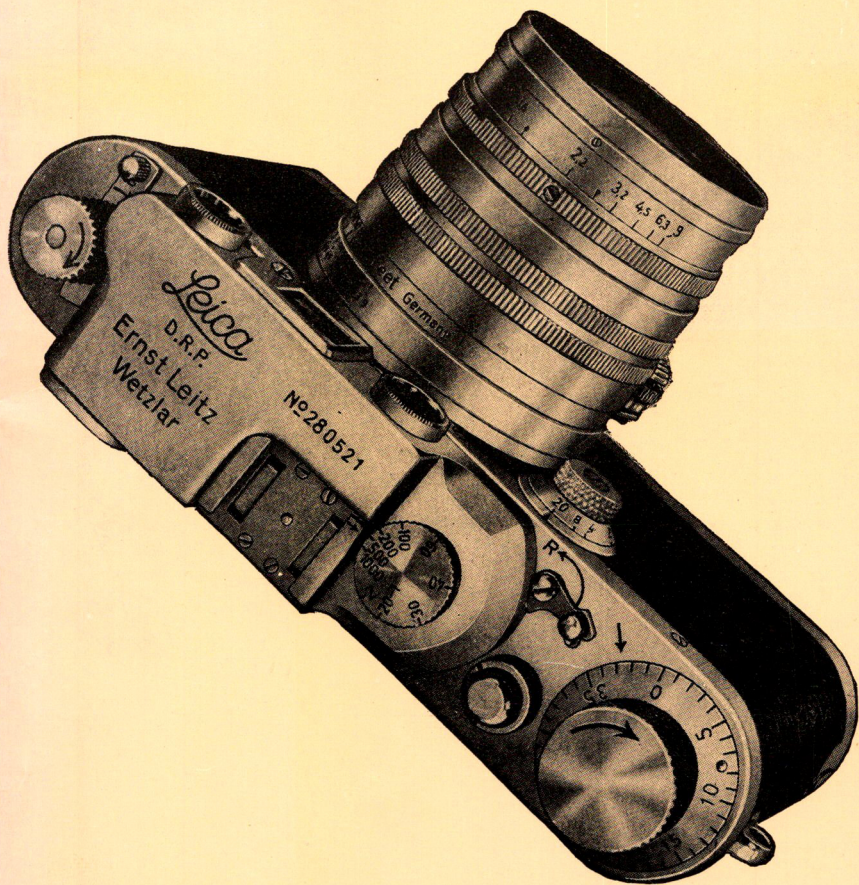


Leica

COMPLETE ILLUSTRATED PRICE LIST OF LEICA CAMERAS AND ACCESSORIES



E. LEITZ, INC.

730 FIFTH AVE.

NEW YORK, N. Y.

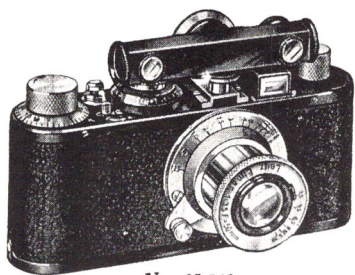
THIS CATALOGUE contains a complete listing of all Leica cameras, accessories, projectors, enlargers, and Leitz prism binoculars. Because of space limitation only a concise description of each item is given herewith. However, booklets are available describing in detail one or more of the Leica items listed in this catalogue. These pamphlets are listed below and are obtainable free of charge, upon request.

- No. 1223 The Reelo and Correx Developing Equipment
- No. 1226 The VALOY and FOCOMAT Enlargers
- No. 1231 Leica Slow Timing Device, Table Tripod and Sunshades
- No. 1246 Weston Exposure Meter LEICAMETER
- No. 1248 The Rapid Winder
- No. 1259 Sport Finders
- No. 1260 Daylight Loading Developing Tank
- No. 1261 The LEICA Gun
- No. 1262 Continuous Projector Attachment
- No. 1263 Enlarger Film Holder
- No. 1269 The Eldia Printer
- No. 1271 Stereoly Polaroid Process
- No. 7040 Enlarging Equipments
- No. 7207 Auxiliary Reproduction Devices
- No. 7323 Large Professional Printer
- No. 7327 Special View Finders
- No. 7427 Lens Tables
- No. 7428 Stereoly Attachment
- No. 7433 Combined Enlarging and Projecting Apparatus
- No. 7454 LEICA Camera 250 Exposure Model
- No. 7485 Copying Equipment
- No. 7540 Panorama Tripod Head
- No. 7561 Film Winder
- No. 7562 Single Exposure Camera
- No. 7567 TELYT Lens 200mm
- No. 7568 HEKTOR Wide Angle Lens 28mm
- No. 7574 Range Finders
- No. 7587 Remote Shutter Control
- No. 7613 Filters
- No. 7615 The Interchangeable LEICA Lenses
- No. 7652 Optical Near Focusing Device
- No. 7675 THAMBAR Lens
- No. 7839 Projector VIII-c (Gnome II)
- No. 2-J Complete Listing of Prism Binoculars
- Bull. 6 Sliding Focusing Copying Attachment
- Bull. 13 Micro Ibsa Attachment

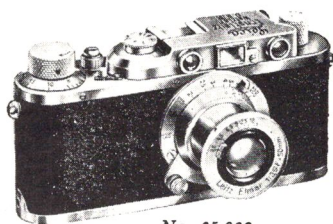
LIST OF CONTENTS

	Pages
Leica Cameras	2-4
Leica Lenses	5-7
Orange Filters and Correction Lenses for Built-in Range Finder and View Finder	8
Exposure Meters	9
View Finders	9-12
Range Finders	12
Leica Filters	13-16
Sunshades	17
Small Camera Accessories	18-19
Timing Devices	19
Tripod Heads	20-21
Supplementary Camera Accessories	22-23
Stereo Apparatus	24
Photoflash Units	25
Carrying and Protective Cases	26-29
Darkroom Supplies	30-31
Developing Apparatus	32-33
Developer	34
Negative Viewers	34
Negative File Systems	34
Film and Slide Printing Apparatus	35
Professional Printers	35-36
Accessories for Professional Printers	36-37
Material for mounting Lantern Slides	37
Copy and Reproduction Apparatus	38-48
Apparatus for Photomicrography	49
Equipments for Scientific and Industrial Photography.....	50-58
Enlarging Apparatus	59-64
Interchangeable Accessories for Enlargers	61, 65
Enlarger Easels	66-67
Distortion Eliminating Device	68
Spare Lamps for Enlargers and Accessories for Using Photoflood Lamps.....	69
Special Accessories for Enlargers	69-70
Projection Apparatus	71-85
Prism Binoculars	86-88
Range Finders for Shooting and Surveying Horizontal and Vertical Measurements of all kinds	89
Conversion of Leica Cameras	90
Leica Publications	91
Alphabetical Index of Code Words	92-96

LEICA CAMERAS



No. 65,010



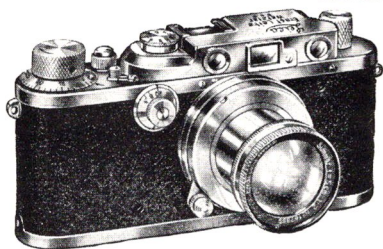
No. 65,032

Cat. No. and
Code Word

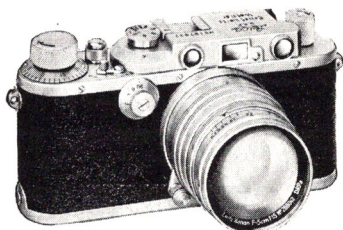
Price

65,000 LEMAX	LEICA CAMERA, STANDARD MODEL, complete with focal plane shutter with speeds from 1/20 to 1/500th second, ELMAR 50mm focus f:3.5 lens, one film magazine and turret clip for range finder, black finish, without case
65,002 LEMAX- CHROM	LEICA CAMERA, STANDARD MODEL, same as No. 65,000, but chrome finish
65,005 LENOT	LEICA CAMERA, STANDARD MODEL, black finish, but without lens with turret clip for range finder
65,008 LENOT- CHROM	LEICA CAMERA, STANDARD MODEL, chrome finish, but without lens
65,010 LYSTA	LEICA CAMERA, STANDARD MODEL, same as No. 65,000, but with special horizontal detachable range finder
65,012 LYSTA- CHROM	LEICA CAMERA, STANDARD MODEL, same as No. 65,010, but chrome finish
65,020 LYKAN	LEICA AUTOFOCAL CAMERA MODEL II, with focal plane shutter with speeds from 1/20 to 1/500th second, built-in automatic focusing range finder, 10 in. cable release and one film magazine, black finish without lens or case
65,022 LYKAN- CHROM	LEICA AUTOFOCAL CAMERA MODEL II, same as No. 65,020, but chrome finish
65,030 LYKUP	LEICA AUTOFOCAL CAMERA MODEL II, same as No. 65,020, but with ELMAR 50mm focus f:3.5 lens
65,032 LYKUP- CHROM	LEICA AUTOFOCAL CAMERA MODEL II, with ELMAR 50mm focus f:3.5 lens, but chrome finish
65,035 LYHEC	LEICA AUTOFOCAL CAMERA MODEL II, same as No. 65,020, but with HEKTOR 50mm focus f:2.5 lens
65,037 LYHEC- CHROM	LEICA AUTOFOCAL CAMERA MODEL II, with HEKTOR 50mm focus f:2.5 lens, but chrome finish

LEICA CAMERAS



No. 65,067



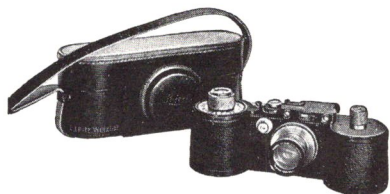
No. 65,088

**Cat. No. and
Code Word**

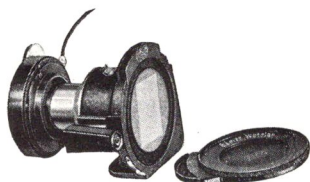
Price

65,050 LYDRO	LEICA AUTOFOCAL CAMERA MODEL III , complete with focal plane shutter with speeds from 1 to 1/500th second, built-in automatic focusing range finder, special 1½X magnifying eye-piece for range finder, eyelets for neckstrap supplied with camera. 10 in. cable release, and one film magazine, black finish, without lens or case
65,052 LYDRO- CHROM	LEICA AUTOFOCAL CAMERA MODEL III , same as No. 65,050. but chrome finish
65,055 LYMAR	LEICA AUTOFOCAL CAMERA MODEL III , same as No. 65,050. but with ELMAR 50mm focus f:3.5 lens
65,057 LYMAR- CHROM	LEICA AUTOFOCAL CAMERA MODEL III , with ELMAR 50mm focus f:3.5 lens , but chrome finish
65,060 LIHIG	LEICA AUTOFOCAL CAMERA MODEL III , same as No. 65,050. but with HEKTOR 50mm focus f:2.5 lens
65,062 LIHIG- CHROM	LEICA AUTOFOCAL CAMERA MODEL III , with HEKTOR 50mm focus f:2.5 lens , but chrome finish
65,065 LYSUM	LEICA AUTOFOCAL CAMERA MODEL III , same as No. 65,050. but with SUMMAR 50mm focus f:2 lens
65,067 LYSUM- CHROM	LEICA AUTOFOCAL CAMERA MODEL III , with SUMMAR 50mm focus f:2 lens , but chrome finish
65,080 LIGOO	LEICA AUTOFOCAL CAMERA MODEL IIIb , with focal plane shutter with speeds from 1 to 1/1000th second, built-in automatic focusing range finder having a 1½X magnified field; eye-pieces of range finder and view finder placed closely together to facilitate the change from one to the other, eyelets for neckstrap supplied with camera, 10 in. cable release and one film magazine, chrome finish, without lens or case
65,082 LEYOO	LEICA AUTOFOCAL CAMERA MODEL IIIb , same as No. 65,080. but with ELMAR 50mm focus f:3.5 lens
65,084 LEHEK	LEICA AUTOFOCAL CAMERA MODEL IIIb , same as No. 65,080. but with HEKTOR 50mm focus f:2.5 lens
65,086 LUDOO	LEICA AUTOFOCAL CAMERA MODEL IIIb , same as No. 65,080. but with SUMMAR 50mm focus f:2 lens
65,088 LOOBT	LEICA AUTOFOCAL CAMERA MODEL IIIb , same as No. 65,080. but with LEITZ XENON 50mm focus f:1.5 lens

LEICA CAMERAS



*No. 65,200
with SUMMAR Lens
and Eveready Case*



*No. 65,400
with ELMAR 50mm Lens
and View Finder*

**Cat. No. and
Code Word**

Price

65,200 **LEICA AUTOFOCAL CAMERA 250 EXPOSURE MODEL**, with large film capacity (250 exposures). Magazines hold 33 feet of standard 35mm motion picture film. This camera is particularly well adapted for aerial, copy, and other types of photography where a greater film capacity is a convenience. Complete, with focal plane shutter with speeds from 1 to 1/1000th second, built-in automatic focusing range finder, special 1½X magnifying eyepiece for range finder, 10 in. cable release, and two special 33 ft. capacity film magazines. (A magazine is used at both ends of this camera, making rewinding unnecessary), **without lens or case....**

LOOMY

65,205 **LEICA AUTOFOCAL CAMERA 250 EXPOSURE MODEL**, same as No. 65,200, but with ELMAR 50mm focus f:3.5 lens

LOOYE

NOTE: SEE NO. 68,325 FILM TRIMMING GUIDE FOR 250 EXPOSURE LEICA, NO. 68,050 EVEREADY CASE, AND NO. 68,305 FILM WINDER.

65,400 **SINGLE EXPOSURE CAMERA**, for testing and similar purposes requiring only one exposure. It also serves as a miniature view camera. The camera consists of a round metal body into which the LEICA lens is screwed. Metal film holders are used which accommodate standard 35mm motion picture film in strips 1½ in. long. The exposure is made with an IBSOR shutter supplied with the camera. A ground glass focusing screen, which is interchangeable with the film holder is used for focusing the lens. A view finder may be attached to the camera body if desired. The camera complete consisting of camera body, ground glass focusing screen, one metal film holder, and IBSOR shutter which can be used on all LEICA lenses of 28mm, 35mm, 50mm, 90mm and 135mm focus, except XENON and THAMBAR, but **without lens**

OLIGO

65,405 **SINGLE EXPOSURE CAMERA**, same as No. 65,400, but **without IBSOR shutter**

GHOX

NOTE: SEE NO. 66,120 FOR SPECIAL VIEW FINDER AND NO. 66,825 FOR SPARE FILM HOLDER.

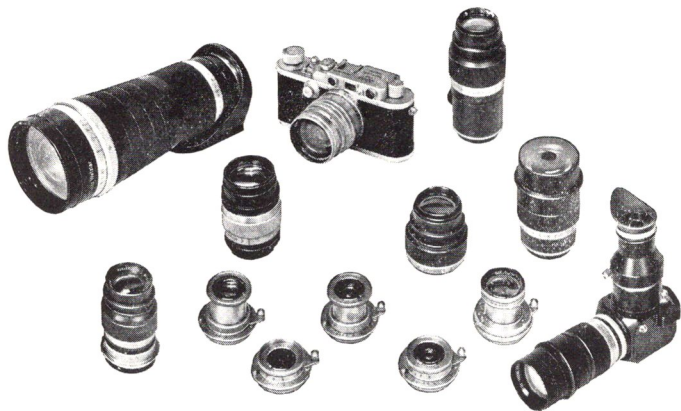
65,408 **Ibsor Shutter**, for use on camera lenses when focal plane shutter is not to be used. This shutter is supplied with the OLIGO Single Exposure Camera, but will be found useful in certain work when used in conjunction with the regular models of LEICA Cameras..

IBSOR

LEICA LENSES

All lenses except **TELYT 200mm**, **TELYT 400mm** and **135mm HEKTOR** short mounted lens are supplied with the coupling mount for use with the built-in range finders on the Model **II**, **III**, **IIIb**, and **250** Exposure cameras. All lenses can also be used with the **Standard Model LEICA**. Some lenses have a small focusing mark for use with **Infra-Red** films and filters.

ALL LEICA LENSES HAVE A DEPTH OF FOCUS SCALE ON THE LENS MOUNT.



LEICA Lenses

Cat. No. and
Code Word

Price

- | | |
|--------------------------------|---|
| <p>65,600
HOOPY</p> | <p>LEITZ Anastigmat HEKTOR, 28mm focus, f:6.3, (extremely wide angle lens), angle of view 76°, minimum focusing distance 3.5 ft., in non-collapsible focusing mount</p> <p>NOTE: SEE NO. 66,100 OR 66,102 FOR SPECIAL VIEW FINDER.</p> |
| <p>65,610
EKURZ</p> | <p>LEITZ Anastigmat ELMAR, 35mm focus, f:3.5, (wide angle lens), angle of view 65°, minimum focusing distance 3.5 ft., in non-collapsible focusing mount</p> <p>NOTE: SEE NO. 66,110 OR 66,112 FOR SPECIAL VIEW FINDER.</p> |
| <p>65,620
ELMAR</p> | <p>LEITZ Anastigmat ELMAR, 50mm focus, f:3.5, (standard lens), angle of view 48°, minimum focusing distance 3.5 ft., in collapsible focusing mount</p> |
| <p>65,630
HEKTO</p> | <p>LEITZ Anastigmat HEKTOR, 50mm focus, f:2.5, (speed lens), angle of view 48°, minimum focusing distance 3.5 ft., in collapsible focusing mount</p> |

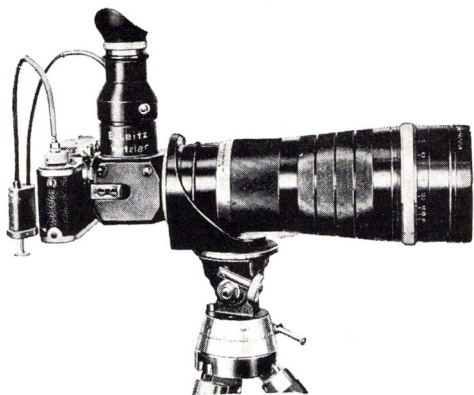
LEICA LENSES

Cat. No. and
Code Word

Price

65,640 SUMUS	LEITZ Anastigmat SUMMAR , 50mm focus, f:2, (super speed lens), angle of view 48°, minimum focusing distance 3.5 ft., in collapsible focusing mount
65,650 XEMOO	LEITZ Anastigmat XENON , 50mm focus, f:1.5 (extreme speed lens), angle of view 48°, minimum focusing distance 3.5 ft., in focusing mount (non-collapsible)
65,660 HEGRA	LEITZ Anastigmat HEKTOR , 73mm focus, f:1.9, (ultra-speed lens), angle of view 34°, minimum focusing distance 5 ft., in focusing mount, including special sunshade
65,670 ELANG	LEITZ Anastigmat ELMAR , 90mm focus, f:4, (speedy distance lens), angle of view 27°, minimum focusing distance 3.5 ft., in focusing mount
65,680 TOODY	LEITZ Anastigmat THAMBAR , 90mm focus f:2.2, (soft focus lens of highest speed for artistic portrait photography), angle of view 27°, minimum focusing distance 3.5 ft., in focusing mount, including special sunshade
65,690 HEFAR	LEITZ Anastigmat HEKTOR , 135mm focus f:4.5, (lens for increased distances), embodying the HEKTOR optical principles in a distance lens, yielding exceptional results, angle of view 19°, minimum focusing distance 5 ft., in focusing mount
65,700 TOOLP	LEITZ Anastigmat TELYT , 200mm focus, f:4.5, (full telephoto lens of highest definition, free from distortion), angle of view 12°, minimum focusing distance 10 ft., in focusing mount, including special sunshade, with Mirror Reflex Housing No. 65,720.....
NOTE: SEE NO. 66,115 FOR SPECIAL VIEW FINDER.	
65,702 EMTOO	Calf's Leather Case for TELYT 200mm lens with Mirror Reflex Housing No. 65,700

LEICA LENSES



No. 65,710
with LEICA Camera on Tripod

Cat. No. and Code Word		Price
65,710 TLOOB	LEITZ Anastigmat TELYT , 400mm focus, f:5 (full telephoto lens of highest definition, free from distortion), angle of view 6°, minimum focusing distance 25 ft., in focusing mount, with Mirror Reflex Housing No. 65,720	
65,720 PLOOT	Mirror Reflex Housing , when supplied separately, with ground glass focusing screen, magnifying arrangement, two magnifiers and double cable release	
65,730 MOOSP	Intermediate Extension Ring , 15mm, for use with TELYT lenses 200 or 400mm. This ring or multiple units thereof, are recommended when it is desired to use these lenses for "close up" photography at less than 10 ft. or 25 ft., respectively	
65,740 OHEBO	LEITZ Anastigmat HEKTOR , 135mm focus, f:4.5, angle of view 19°, minimum focusing distance 5 ft., in short focusing mount, without coupling to the range finder for use with the Mirror Reflex Housing No. 65,720, or with the intermediate collar No. 65,750..	
65,750 ZOOKE	Intermediate Collar with Automatic Coupling for LEICA range finder (with this collar the HEKTOR lens No. 65,740 may be used in the same manner as the regular HEKTOR 135mm lens No. 65,690)	
NOTE: WHEN ORDERING THE INTERMEDIATE COLLAR NO. 65,750, IT IS NECESSARY TO SEND US THE HEKTOR 135MM LENS NO. 65,740 IN ORDER TO ADJUST THE INTERMEDIATE COLLAR TO THE LENS.		
65,760 ZOOAN	Short Focusing Mount for HEKTOR 135mm lens No. 65,690 (as supplied with No. 65,740) to be interchanged with the regular mount when using this lens in conjunction with the Mirror Reflex Housing No. 65,720	

ORANGE FILTERS AND CORRECTION LENSES FOR BUILT-IN RANGE FINDER AND VIEW FINDER



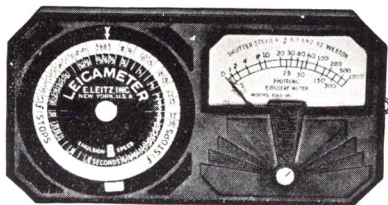
No. 65,922

Cat. No. and Code Word		Price
65,920 ORAKO	Orange Filter , in slip-on mount, for range finder for LEICA Cameras II and III. This orange filter gives better contrast between the two range finder images	
65,922 ORAKO- CHROM	Orange Filter , same as No. 65,920, but for chrome LEICA cameras, II, III and IIIa	
65,925 OKARO	Orange Filter , same as No. 65,922, but for LEICA Camera IIIb only, chrome finish	
65,930 ORTUX	Correction Lenses , for use on range finder or view finder of LEICA Models II, Standard Model, III and IIIa for near and farsightedness. Prices vary according to the diopter selected, viz.: Up to plus or minus 8 diopters	
	Above plus 8 diopters	
	From minus 8.5 up to minus 13 diopters	
	From minus 13.5 up to minus 20 diopters	
65,932 ORUXO	Correction Lenses , for use on range finder or view finder of LEICA Models II, Standard Model, III and IIIa, to correct astigmatism. Prices vary according to the amount of correction necessary, viz.: From plus 0.25 to plus 13.0 of cyl. plus 0.25 up to plus 6.0.....	
	From minus 0.25 to minus 8.0 of cyl. minus 0.25 up to minus 6.0....	
	From minus 8.5 to minus 20.0 of cyl. minus 0.25 up to minus 6.0..	
65,935 ORWYB	Correction Lenses , for use on range finder and view finder of LEICA Model IIIb, for near and farsightedness. Prices vary according to the diopter selected ranging from about....	
65,937 ORYCE	Correction Lenses , for use on range finder and view finder of LEICA Model IIIb, to correct astigmatism. Prices vary according to the diopter selected, ranging from about.....	

NOTE: PERSONS WHO WEAR SPECTACLES MAY HAVE SPECIAL LENSES OF THE SAME CORRECTION AS THEIR SPECTACLES (FAR-SIGHTEDNESS, NEAR-SIGHTEDNESS OR ASTIGMATISM), WHICH SCREW INTO THE RANGE FINDER OR VIEW FINDER REAR LENS MOUNT. PRESCRIPTION OF THE PARTICULAR EYEGLASSES MUST BE SENT WITH THE ORDER. CORRECTION LENSES NOT IN STOCK MUST BE ORDERED FROM THE FACTORY AND WILL TAKE FROM 8-10 WEEKS TO OBTAIN.

Important: When ordering correction lenses state your model of LEICA Camera.

EXPOSURE METERS



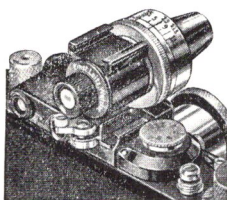
No. 65,950

Cat. No. and
Code Word

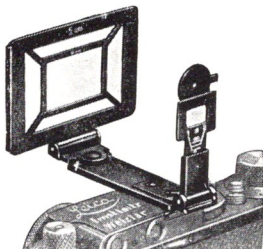
Price

65,950 WESTO	WESTON LEICAMETER Model C (No. 650), direct exposure reading scale, simply operated calculator giving readings for films of different Weston speeds, and also the shutter speeds to use for various diaphragm openings, without case
65,955 WESCA	Soft Leather Case , with zipper for LEICAMETER.....
65,958 CALFA	Calf's Leather Case for LEICAMETER

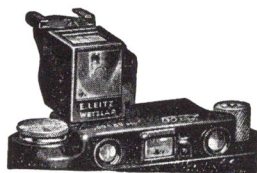
VIEW FINDERS



No. 66,000



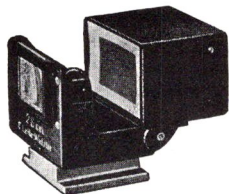
No. 66,070



No. 66,050

66,000 VIDOM	VIDOM Universal View Finder , with adjustable masking aperture and parallax adjustment, for use with all LEICA Cameras and all Lenses of 35mm, 50mm, 73mm, 90mm and 135mm focus
66,005 VIDOM- CHROM	VIDOM Universal View Finder , same as No. 66,000 but chrome finish
66,008 VILUI	Brown Cowhide Leather Case , for VIDOM finders Nos. 66,000 or 66,005
66,050 AUFUSU	Reflecting View Finder , for LEICA Camera for use with all 50mm lenses
66,052 AUFET	Brown Cowhide Leather Case , for Reflecting View Finder No. 66,050

VIEW FINDERS



No. 66,100



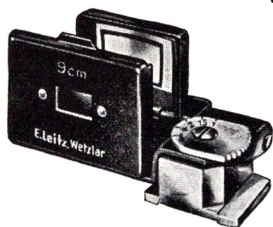
No. 66,110

**Cat. No. and
Code Word**

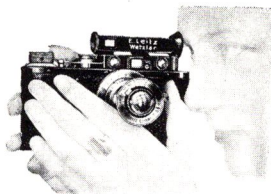
Price

66,055 AYOOC	Reflecting View Finder , same as No. 66,050, but with negative auxiliary lens , for use with the 35mm and 50mm LEICA lenses. (When the negative lens is in position, use the 35mm lens; when swung out, use the 50mm lenses.)
66,060 AHOOT	Reflecting View Finder , similar to No. 66,055, for use with 28mm and 50mm lenses
66,062 ETHOO	Brown Cowhide Leather Case , for Reflecting View Finders Nos. 66,055 and 66,060
66,070 RASUK	Direct Vision View Finder , with parallax adjustment. Special wire type metal finder for use with all LEICA lenses of 35mm, 50mm, 73mm and 90mm focus
66,075 RASUK- CHROM	Direct Vision View Finder , same as No. 66,070 but chrome finish ..
66,080 RAMET	Mask for RASUK Direct Vision Frame Finder for use with the 105mm (discontinued) and 135mm lenses
66,081 RAMET- CHROM	Mask for RASUK Direct Vision Frame Finder , same as No. 66,080, but chrome finish
66,085 RASAL	Direct Vision View Finder , complete with mask for use with all LEICA lenses (combination of RASUK and RAMET) of 35, 50, 73, 90, 105mm (discontinued) and 135mm focus
66,090 RASAL- CHROM	Direct Vision View Finder , complete, same as No. 66,085, but chrome finish
66,092 RWBOO	Soft Leather Purse Case , for Direct Vision View Finders Nos. 66,070, 66,075, 66,085 and 66,090
66,100 SUOOQ	Special View Finder for 28mm HEKTOR lens
66,102 SUOOQ- CHROM	Special View Finder , same as No. 66,100, but chrome finish
66,103 YSOOE	Adapter for Special View Finder for 28mm lens when used on Standard LEICA
66,104 RVZOO	Brown Cowhide Leather Case , for Special View Finders Nos. 66,100 and 66,102

VIEW FINDERS



No. 66,152



No. 66,180

Cat. No. and
Code Word

Price

66,110 WEISU	Special View Finder for 35mm ELMAR lens
66,112 WEISU- CHROM	Special View Finder, same as No. 66,110, but chrome finish
66,115 SFTOO	Special View Finder for 200mm TELYT lens
66,120 SUWOO	Special View Finder for 50mm lenses, for use on single exposure camera No. 65,400 or 65,405
66,150 SAIOO	Sport Finder, permits quick and convenient operation with long focus lenses. It is an optical finder giving a larger field of view than that actually embraced by the camera lens, the picture area being defined by a translucent white border, thus permitting a moving subject to be kept in view before it is actually photographed. To compensate for parallax at close range, a lever is turned. For use with the HEKTOR 73mm lens in chrome finish ..
66,152 SEROO	Sport Finder, same as No. 66,150, but for use with all LEICA lenses of 90mm focus, in chrome finish
66,154 SYEOO	Sport Finder, same as No. 66,150, but for use with all LEICA lenses of 135mm focus, in chrome finish
66,155 YSOOE	Adapter for Sport Finders when used on Standard LEICA
66,156 COOLG	Leather Case, accommodating any of the Sport Finders Nos. 66,150/66,154
66,170 WINKO	WINKO Angle View Finder, for LEICA Camera Models A, C and Standard LEICA, for use with 50mm lenses
66,175 WIOOK	Brown Cowhide Leather Case, for WINKO Angle View Finder..
66,180 WINTU	WINTU Angle View Finder, black finish for LEICA Camera Models II and III, for use with 50mm lenses with prism for focusing at right angles

VIEW FINDERS

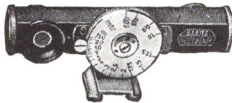
Cat. No. and
Code Word

Price

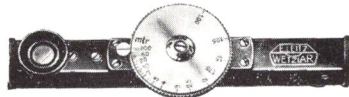
- 66,182** **WINTU** Angle View Finder, same as No. 66,180, but in **chrome finish**, for LEICA Camera Models II, III, IIIa and IIIb
- WINTU-CHROM**
- 66,185** **Brown Cowhide Leather Case**, for WINTU Angle View Finders Nos. 66,180 or 66,182, or for FOKOS Range Finders No. 66,250 and 66,251
- WIVOO**

NOTE: THE ANGLE VIEW FINDERS PERMIT TAKING PHOTOGRAPHS INCONSPICUOUSLY WHILE FACING IN A DIRECTION AT RIGHT ANGLES TO THAT OF THE SUBJECT. IN OTHER WORDS, ONE CAN PHOTOGRAPH "AROUND THE CORNER."

RANGE FINDERS



No. 66,255



No. 66,248

- 66,240** **Near Range Finder FOKIN**, for Motion Picture Cameras, complete with clip, corrected for plus $\frac{3}{4}$ ft.
- FOKIN**
- 66,244** **Hinged Mounting Clip**, for attaching FOKIN Range Finder to Motion Picture Cameras
- FOKAL**
- 66,245** **Adjustable Holder**, with Universal Joint for FOKIN Range Finder
- FOKUX**
- 66,246** **Range Finder FONOR**, for hand cameras of medium size with fixing clip, corrected for plus 5 in.
- FONOR**
- 66,248** **Range Finder FOFER**, with 10cm base length for small cameras with fixing clip
- FOFER**
- 66,249** **Calf's Leather Case**, for FOFER, FOKIN or FONOR Range Finders
- EUVER**
- 66,250** **Short Base Range Finder FOKOS**, for use on Standard Model LEICA Camera without turret clip
- FOKOS**
- 66,251** **Short Base Range Finder FOKOS**, same as No. 66,250, but **chrome finish**
- FOKOS-CHROM**
- 66,255** **Short Base Range Finder FOKOS**, but with special turret clip for use on Models A, B and C LEICA Cameras or other miniature cameras
- HFOOK**
- 66,256** **Short Base Range Finder FOKOS**, same as No. 66,255 but **chrome finish**
- HFOOK-CHROM**
- 66,258** **Soft Leather Purse Case**, for FOKOS Range Finder No. 66,250 and Angle Finders Nos. 66,180 and 66,182
- EURUS**
- 66,260** **Metal Clip (shoe) black finish**, with 3 metal screws for attaching view finders or range finders to cameras other than Leica
- SHOEE**
- 66,262** **Metal Clip (shoe)**, same as No. 66,260 but **chrome finish**
- CLIPP**

LEICA FILTERS



No. 66,400



No. 66,340

NOTE: ALL LEICA FILTERS ARE OF SOLID GLASS IN WHICH THE COLOR IS INHERENT. THEY MAY THEREFORE BE USED UNDER ALL CLIMATIC CONDITIONS AND RETAIN THEIR ORIGINAL COLOR. (Soft Leather Purse Cases for filters are listed on page 29.)

19mm Filters in screw-in mounts for LEICA lenses ELMAR 35 and 50mm only:

Cat. No. and Code Word		Price
66,300 FIXTA	Yellow Filter 0 (very light)	
66,302 FIRHE	Yellow Filter I (light)	
66,304 FIRMY	Yellow Filter II (medium)	
66,306 FINUS	Yellow Filter III (dark)	
66,315 FIORE	U.V. (ultra violet) Protection Filter	
66,318 FIXIO	Panchromatic (green) Filter	
66,320 FCZOO	Infra Red Filter I (light)	
66,322 FIBOB	Infra Red Filter II (medium)	
66,324 FDOOH	Infra Red Filter III (dark)	
	34mm Filters in slip-on mounts with clamping screw for Leica lenses: HEKTOR 28mm, ELMAR 35mm, ELMAR 50mm, HEKTOR 50mm, SUMMAR 50mm, ELMAR 90mm, HEKTOR 135mm, and HEKTOR 135mm lens in short focusing mount.	
66,340 FIHEL	Yellow Filter 0 (very light)	
66,342 FIGRO	Yellow Filter I (light)	
66,344 FIGAM	Yellow Filter II (medium)	
66,346 QCPOO	Yellow Filter III, (dark)	

LEICA FILTERS

Cat. No. and Code Word		Price
66,355 FIRAD	Graduated Yellow Sky Filter	
66,358 FIOLA	U.V. (ultra violet) Protection Filter	
66,370 FIPOS	Panchromatic (green) Filter	
66,372 FOOBD	Graduated Panchromatic (green) Filter	
66,378 FIQUX	Orange-Red Filter (very light)	
66,380 FEDOO	Infra Red Filter I, (light)	
66,382 FIKYB	Infra Red Filter II, (medium)	
66,384 FEOOG	Infra Red Filter III, (dark)	
<p>NOTE: ON SPECIAL REQUEST, FILTERS CAT. NOS. 66,340 TO 66,384 CAN BE SUPPLIED WITH CHROME MOUNT, ADDITIONAL COST</p> <p>30mm Filters in screw-in mounts for Leica lenses: Hektor 28mm, Summar 50mm, Elmar 90mm, Hektor 135mm and Hektor 135mm in short focusing mount.</p>		
66,400 FIMOO	Yellow Filter 0, (very light)	
66,402 FIOOC	Yellow Filter I, (light)	
66,404 FAVOO	Yellow Filter II, (medium)	
66,406 QBOOE	Yellow Filter III, (dark)	
66,415 FBOOK	U.V. (ultra violet) Protection Filter	
66,418 FBXOO	Panchromatic (green) Filter	
66,420 FNOOY	Infra Red Filter I, (light)	
66,422 FCOOI	Infra Red Filter II, (medium)	
66,424 FNUOO	Infra Red Filter III, (dark)	

LEICA FILTERS

Cat. No. and
Code Word

Price

39mm Filters in screw-in mounts for Hektor 73mm lens.

66,450 FIWAS	Yellow Filter O, (very light)
66,452 FIREG	Yellow Filter I, (light)
66,454 FIWIG	Yellow Filter II, (medium)
66,456 FILXA	Yellow Filter III, (dark)
66,460 FIWET	U.V. (ultra violet) Protection Filter
66,463 FIGIL	Graduated Yellow Sky Filter, in slip-on mount
66,465 FIRYX	Panchromatic (green) Filter
66,468 FOOCR	Graduated Panchromatic (green) Filter, in slip-on mount
66,470 FGOGE	Infra Red Filter I, (light)
66,472 FIPLO	Infra Red Filter II, (medium)
66,474 FHOOD	Infra Red Filter III, (dark)
	Filters in bayonet mount for XENON f:1.5 lens:
66,490 XOOAM	Yellow Filter O, (very light)
66,492 XOOBZ	Yellow Filter I, (light)
66,494 XOOCN	Yellow Filter II, (medium)
66,496 XOOMT	Yellow Filter III, (dark)
66,500 XOODA	Graduated Yellow Sky Filter
66,502 XOOFB	U.V. (ultra violet) Protection Filter
66,504 XOOGP	Panchromatic (green) Filter
66,508 XOOHC	Graduated Panchromatic (green) Filter
66,512 XOOIQ	Infra Red Filter I, (light)
66,514 XOOKD	Infra Red Filter II, (medium)
66,516 XOOLR	Infra Red Filter III, (dark)

LEICA FILTERS

Cat. No. and Code Word		Price
	48mm Filters in screw-in mounts for Leica lenses: Tambar 90mm, and Telyt 200mm.	
66,530 POOAH	Yellow Filter 0, (very light)	
66,532 POOBV	Yellow Filter I, (light)	
66,534 POOCI	Yellow Filter II, (medium)	
66,536 POOFX	U. V. (ultra violet) Protection Filter	
66,540 PGOOX	Graduated Yellow Sky Filter, in slip-on mount	
66,544 POODW	Panchromatic (green) Filter	
66,550 PGYOO	Graduated Panchromatic (green) Sky Filter, in slip-on mount	
66,554 POOGL	Infra Red Filter I, (light)	
66,556 POEEK	Infra Red Filter II, (medium)	
66,558 POOHY	Infra Red Filter III, (dark)	
	85mm Filters in screw-in mounts for LEICA lens Telyt 400mm.	
66,570 TFOOG	Yellow Filter 0, (very light)	
66,572 TFSOO	Yellow Filter I, (light)	
66,574 TGOOF	Yellow Filter II, (medium)	
66,580 TIOOD	U.V. (ultra violet) Protection Filter	
66,586 TGUOO	Infra Red Filter I, (light)	
66,588 THOOE	Infra Red Filter II, (medium)	
66,590 THWOO	Infra Red Filter III, (dark)	
66,620 MOUNT	Filter Mount, 34mm diameter with set screw and special adapter ring to fit Wratten Filters of 32mm diameter	
66,625 CHROM	Filter Mount, same as No. 66,620, but chrome finish	

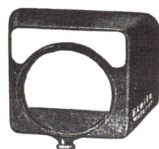
SUNSHADES



No. 66,710



No. 66,740



No. 66,715

Cat. No. and
Code Word

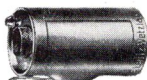
Price

66,700 SOHN	Lens Sunshade, with clamping screw, for HEKTOR lens 28mm ..
66,705 FLQOO	Lens Sunshade, with clamping screw, for ELMAR lens 35mm
66,710 FISON	Lens Sunshade, with clamping screw, for ELMAR 50mm and 90mm, and HEKTOR 50mm and 135mm lenses
66,712 FISON- CHROM	Lens Sunshade, same as No. 66,710, but chrome finish
66,715 SOOMP	Lens Sunshade, for SUMMAR 50mm lens. It is especially designed for this lens, and provides the highest efficiency
66,718 XIOOM	Lens Sunshade, for XENON 50mm lens special collapsible type....
66,720 FGHOO	Lens Sunshade, for HEKTOR 73mm lens (as replacement)
66,725 SHADE	Lens Sunshade, for THAMBAR 90mm lens (as replacement)
66,735 SUNGO	Lens Sunshade, for TELYT 200mm lens (as replacement)
66,740 FIKUS	Lens Sunshade, adjustable, for ELMAR 50 and 90mm, SUMMAR 50mm, HEKTOR 50 and 135mm lenses. Barrel is calibrated for the various focal length lenses and may be adjusted accordingly....

SMALL CAMERA ACCESSORIES



No. 66,870



No. 66,800



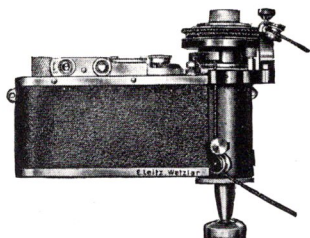
No. 66,880

Cat. No. and
Code Word

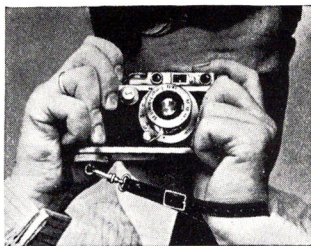
Price

66,800 FILCA	Spare Roll Film Magazine , for LEICA Camera (all models except 250 Exposure Model)
66,805 SPUCA	Magazine Spool , for LEICA film magazine No. 66,800
66,810 SPULM	Take-up Spool , for LEICA Cameras Standard Model, II, III or IIIb, and former Models A, C or IIIa
66,820 KOOFB	Spare Roll Film Magazine , for LEICA Camera 250 Exposure Model. Accommodates rolls of 33 feet of film
66,825 KOOAS	Spare Film Holder , for Single Exposure Camera.
66,835 FIRHU	Dust Cap, metal , to be screwed on base of LEICA lens when not in use (supplied either in black or in chrome finish; please state your preference)
66,840 ORVZO	Lens Cap , for all LEICA lenses excepting XENON 50mm, HEKTOR 73mm, THAMBAR 90mm, TELYT 200mm and TELYT 400mm lenses, black finish
66,842 ORVZO- CHROM	Lens Cap , same as No. 66,840, chrome finish
66,845 XENCA	Lens Cap , for XENON lens 50mm
66,848 ORXDO	Lens Cap , for HEKTOR lens 73mm
66,860 ORZHO	Lens Cap , for TELYT 200mm or THAMBAR 90mm lens
66,870 ORTVO- CHROM	Special Lens Opening Cover , for LEICA Camera, chrome finish
66,880 FINOT	Wire Cable Release , 10 in. long, with arresting set screw for time exposures, for LEICA Cameras.....
66,882 OPKOM	Wire Cable Release , same as No. 66,880, but 20 in. long
66,885 FIDRI	Wire Cable Release , 10 feet long, for LEICA Cameras
66,888 FISEX	Wire Cable Release , 20 feet long, for LEICA Cameras

SMALL CAMERA ACCESSORIES



No. 66,890



No. 66,895
in use with LEICA

Cat. No. and
Code Word

66,890
OOFRC

Remote Release and Shutter Winder serves to operate the LEICA at distances when the presence of the operator may be disturbing, as in cases when photographing birds, wild animal life, etc.

66,893
FIBOS

Shoulder Strap, for LEICA Models III, IIIa and IIIb for replacement (one strap comes with each new Model III and IIIb LEICA), complete with metal snaphooks

66,895
TROOV

Camera Sling, adjustable in length, of leather, with safety lock, for steadier pictures

Price

TIMING DEVICES



No. 66,900



No. 66,915

66,900
HEBOO

Automatic Slow Speed Timing Device, with speeds of 1, $\frac{1}{2}$, $\frac{1}{4}$ and $\frac{1}{8}$ second, for attaching to LEICA Cameras A, C, II, and Standard Model, **complete**, but **without case**

66,903
ETOOQ

Soft Leather Purse Case, for Automatic Slow Speed Timing Device No. 66,900

66,910
DIREKT

Self-Timing Device for LEICA Cameras. Permits delayed action for exposures

66,915
APOOM

Self-Timing Device for LEICA Cameras, improved model, permits the shutter of the camera to be automatically released in 12 to 15 seconds

66,918
APOOM

Soft Leather Case for Self-Timing Device No. 66,915

TRIPOD HEADS



Cat. No. and
Code Word

Price

67,000 FOOMI	Ball Jointed Tripod Head , for use when mounting LEICA Camera in any fixed position
67,005 KGOON	Large Ball Jointed Tripod Head , similar to No. 67,000, but larger and heavier, especially recommended for the TELYT 200mm and 400mm focus lenses
67,010 ZSOOG	Intermediate Socket for ball-jointed tripod heads when used on tripod stands with large top plate
67,015 SDOOG	Quick-Changing Snap-Socket Tripod Head
67,018 ZTNOO	Adapter for accommodating cameras or accessories with foreign tripod base to those having American tripod base, and vice versa..
67,020 VEZUK	Protection Shield , for LEICA Camera; slips over side of camera having the tripod socket, protecting base plate and side of camera from injury
67,025 FARUX	Panorama Tripod Head , calibrated both for vertical and horizontal pictures with the LEICA Camera and any of the 50mm LEICA lenses. This panorama head permits the interchange of calibration rings so that perfectly matched pictures can be made with any of the LEICA lenses, except TELYT 400mm. (Rings for other than the 50mm lenses are sold separately, see below)
67,027 FOONW	Interchangeable Calibrated Ring , for use on Panorama Head No. 67,025, calibrated for 28mm lens
67,029 FAROS	Interchangeable Calibrated Ring , for use on Panorama Head No. 67,025, calibrated for 35mm lens
67,031 FAWAG	Interchangeable Calibrated Ring , for use on Panorama Head No. 67,025, calibrated for 73mm lens
67,033 FAXIS	Interchangeable Calibrated Ring , for use on Panorama Head No. 67,025, calibrated for 90mm lens

TRIPOD HEADS

Cat. No. and
Code Word

Price

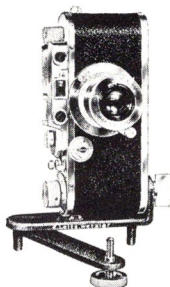
67,038 **Interchangeable Calibrated Ring**, for use on Panorama Head No.
EARLY 67,025, calibrated for 135mm lens

67,042 **Interchangeable Calibrated Ring**, for use on Panorama Head No.
FOOQL 67,025, calibrated for 200mm lens

NOTE: ITEMS NOS. 67,038 AND 67,042 ARE ARRANGED FOR PANORAMA PHOTOGRAPHY WITH CAMERA IN HORIZONTAL POSITION ONLY. WHEN USING OBJECTIVES 135MM AND 200MM FOCUS, THE PANORAMA HEAD NO. 67,025 SHOULD BE ATTACHED TO THE OBJECTIVES PROPER, WHICH HAVE A TRIPOD THREAD AND NOT TO THE CAMERA. TO PROVIDE FOR RIGID SUPPORT, THE LARGE BALL AND SOCKET HEAD NO. 67,005 SHOULD BE USED.

67,050 **Angle Bracket**, for convenience in attaching and leveling LEICA
FIAVI Camera to panorama head

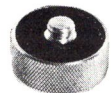
NOTE: THE SPIRIT LEVEL NO. 67,080 OR NO. 67,082, WHICH IS ATTACHED TO THE ANGLE BRACKET NO. 67,050 OR DIRECTLY TO THE LEICA CAMERA, SHOULD BE USED WHEN MAKING PANORAMA PICTURES.



No. 67,060



No. 67,080



No. 67,018

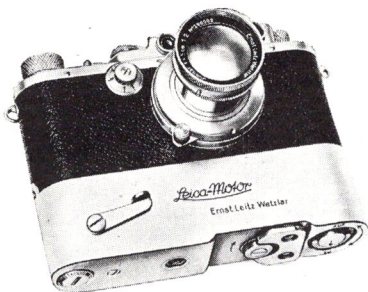
67,060 **LEICA Table Tripod**, all metal construction, leather-faced where
TOOSF required to prevent scratching the camera, with leveling and tripod
 screws, complete, ready for use

67,080 **Spirit Level (fits into clip on all LEICA Cameras)**.
DOOLU

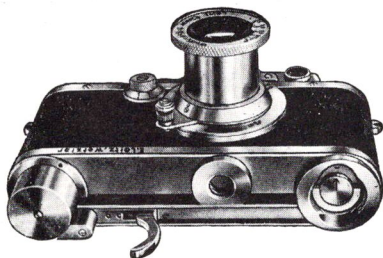
67,082 **Spirit Level**, same as No. 67,080, but **chrome finish**

DOOLU-
CHROM

SUPPLEMENTARY CAMERA ACCESSORIES



No. 67,110



No. 67,117

Cat. No. and
Code Word

Price

67,110
MOOLY

LEICA Motor, for making sequence pictures automatically. Will permit series of up to 12 exposures at a speed of two exposures per second to be made. Contains powerful spring, and counting mechanism. Fits on base of camera in place of regular baseplate, in **chrome finish**

NOTE: ALL LEICA CAMERAS BEARING A SERIAL NUMBER BELOW 111,450 MUST BE ALTERED TO FIT THE LEICA-MOTOR. THE CHARGE FOR THIS CONVERSION IS \$15.00. ALSO LEICA CAMERAS BEARING SERIAL NUMBERS BETWEEN 111,450 AND 159,000 MUST BE CHANGED AT A COST OF \$4.50. LEICA CAMERAS WITH SERIAL NUMBERS ABOVE 159,000 CAN BE USED DIRECTLY WITH THE LEICA-MOTOR WITHOUT ANY CHANGE, EXCEPT FOR A MINOR ADJUSTMENT OF THE MOTOR.

67,115
SCNOO

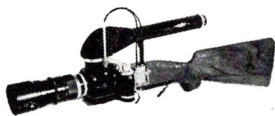
Rapid Winder, permits successive exposures with extreme speed; it consists of an especially designed LEICA baseplate that may be interchanged with the standard baseplate. The special baseplate carries a trigger which slides in a groove. The trigger is operated by pulling it along the groove, this action rewinding the shutter and moving the film to the next section. **Black finish**

67,117
SCNOO-
CHROM

Rapid Winder, same as No. 67,115, but **chrome finish**

NOTE: ALL LEICA CAMERAS BEARING A SERIAL NUMBER BELOW 111,450 MUST BE ALTERED TO FIT THE RAPID WINDER. THE CHARGE FOR THIS CONVERSION IS \$15.00. ALSO LEICA CAMERAS BEARING SERIAL NUMBERS BETWEEN 111,450 AND 159,000 MUST BE CHANGED AT A COST OF \$4.50. LEICA CAMERAS WITH SERIAL NUMBERS ABOVE 159,000 CAN BE USED DIRECTLY WITH THE RAPID WINDER WITHOUT ANY CHANGE.

SUPPLEMENTARY CAMERA ACCESSORIES



No. 67,150
with TELYT 200mm Lens,
Mirror Reflex Housing and
LEICA

Cat. No. and
Code Word

Price

67,150 **LEICA Gun**, for use with LEICA camera and 200mm TELYT or
RIFLE 400mm TELYT objectives with Mirror Reflex Attachment, or
135mm HEKTOR lens in short focusing mount, **not** including
LEICA Camera, Mirror Reflex Attachment, or lenses

If the LEICA Gun is ordered for use with a TELYT or HEKTOR lens already in your possession, it is necessary to forward your camera and lens to us for proper adjustment.

67,155 **Carrying Case**, for LEICA Gun with TELYT 200mm lens or HEK-
RIFUN TOR 135mm lens in short focusing mount

67,157 **Carrying Case**, for LEICA Gun with TELYT 400mm lens

NUFIR



No. 67,200

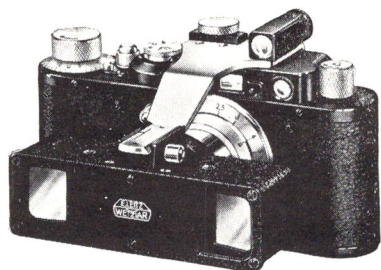
67,200
NOOKY

Optical Short Distance Focusing Device. This device allows the LEICA lenses coupled with the range finder to be used at close distances between 3½ ft. and 16½ in. enabling one to focus quickly as well as accurately. The device consists of an adapter cam, to be screwed into the objective flange; the cam carries a glass wedge that projects in front of the entrance window of the range finder and serves to deflect the light rays emanating from the subject. In addition, this device is equipped with an image-field stop situated in front of the camera view finder. The stop is manipulated by means of a curve and thus serves as parallax compensation. The cam is provided with a bayonet lock accommodating the LEICA ELMAR lens 50mm focus f:3.5 No. 65,620

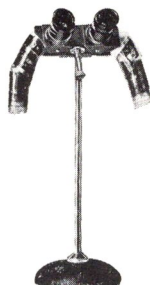
67,210
NOOKY-
HESUM

Optical Short Distance Focusing Device, same as No. 67,200, however, for use with LEICA lenses HEKTOR 50mm f:2.5 No. 65,630 or SUMMAR 50mm f:2 No. 65,640

STEREO APPARATUS



No. 67,302



Nos. 67,315 with 67,320

Cat. No. and
Code Word

Price

67,300 STERO	STEREOLY Attachment , for taking stereo pictures with the LEICA Model IIIb, in case
67,302 VOSTN	STEREOLY Attachment , for taking stereo pictures with the LEICA Models II, III, or IIIa, in case
67,305 VORSA	STEREOLY Attachment , for taking stereo pictures with the LEICA Models A, C or Standard Model, in case
67,310 VORUF	Arm for STEREOLY Attachment (for using No. 67,305 in connection with LEICA Models II, III, IIIa)
67,312 ARMST	Arm for STEREOLY Attachment (for using No. 67,302 or 67,305 in connection with LEICA Model IIIb)
67,315 VOIRA	STEREO Viewer , for LEICA pictures, taken with the STEREOLY Attachments No. 67,300, No. 67,302 or No. 67,305, without stand, in case
67,320 VOTIV	Stand , serving as support for Stereo Viewer No. 67,315

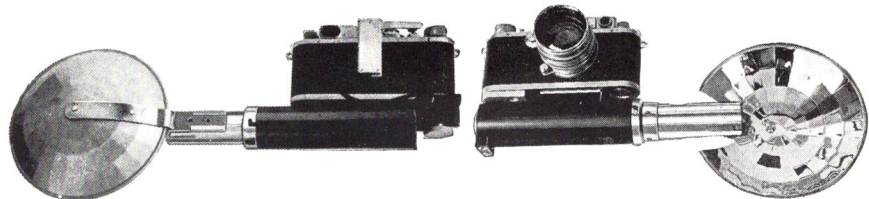


No. 67,325

67,325 FIATE	Stereo Slide Bar , for use when making two separate LEICA negatives for stereoscopic pictures
-----------------	--

(SEE PAGE 37 FOR STEREO COVER GLASS PLATES)

PHOTOFLASH UNITS



*No. 67,500
with LEICA*

*No. 67,550
with LEICA*

Cat. No. and
Code Word

Price

67,500 **LEICA Synchronized Flash Unit, Model V**, permits free access
SYNCO to the shutter speed dial, enabling the LEICA to be used at all
shutter speeds. Complete, including battery case with two bat-
teries, and means for attaching it to the tripod base of the Leica,
built-in receptacle for miniature testing lamp, detachable aplanatic
reflector, adjustable for different lamp sizes, special synchronizing
head which fits into the accessories clip of the Leica, special quick-
changing lamp socket

67,510 **LEICA Synchronized Flash Unit, Model Va**, same as No. 67,500 but
FLASH for use with the Standard Model Leica

NOTE: NOS. 67,500 AND 67,510 ARE REGULARLY SUPPLIED
WITH A POLISHED REFLECTOR. A DULL SURFACED RE-
FLECTOR CAN BE SUPPLIED UPON SPECIAL ORDER OR
OBTAINED AS AN ADDITIONAL ACCESSORY, AS LISTED
BELOW :

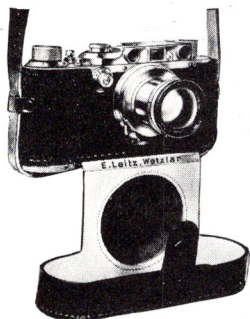
67,520 **Dull Surfaced Reflector**, for use with Nos. 67,500 and 67,510. This
FLECT reflector is useful for occasions where soft light is desirable, as in
portraiture

67,530 **Bracket**, for enabling the Synchronized Flash Units Nos. 67,500
BRACK and 67,510 to be used in a vertical position

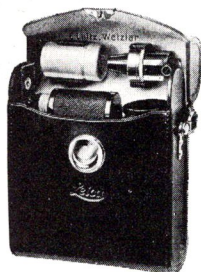
67,535 **Battery Case Extension**, permitting three batteries to be used with
SYBAT flash units Nos. 67,500 or 67,510. (This is recommended when it is
desired to use the flash lamps at a distance from the camera.)
Including one battery

67,550 **LEICA Synchronized Flash Unit, Model VI**, new compact unit
BLITZ permitting free access to the shutter speed dial and allowing the
LEICA to be used at all shutter speeds. Contact is made directly
through the baseplate of the LEICA, eliminating the use of addi-
tional synchronizing heads. Complete, consisting of special base-
plate which is interchanged with the regular baseplate of the
LEICA, battery case, with two batteries, which is quickly
attached to the special baseplate through a dove-tailed slide,
built-in receptacle for miniature testing lamp, detachable re-
flector, two positions for reflector for different lamp sizes,
special quick-changing lamp socket.....

CARRYING AND PROTECTIVE CASES



No. 68,020 with LEICA Camera



No. 68,055 with LEICA Camera
and Accessories

Cat. No. and
Code Word

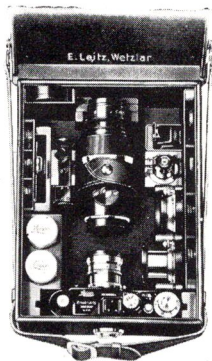
Price

68,000 ESNAR	Eveready Case, cowhide, with neckstrap, for LEICA Models II, III, IIIa or IIIb, having any of the following lenses attached: ELMAR 35mm, ELMAR 50mm, HEKTOR 28mm, HEKTOR 50mm
68,005 ESOOR	Eveready Case, similar to No. 68,000, but for camera with Rapid Winder attached
68,010 EWOON	Eveready Case, similar to No. 68,000, but for camera with LEICA Motor attached
68,015 ESMOS	Eveready Case, cowhide, with neckstrap, for Standard Model LEICA and Range Finder FOKOS attached
68,020 ESFUS	Eveready Case, cowhide, with neckstrap, for LEICA Models II, III, IIIa or IIIb with SUMMAR 50mm lens attached
68,025 EPZOO	Eveready Case, similar to No. 68,020, but, for camera with Rapid Winder attached
68,030 EYSOO	Eveready Case, similar to No. 68,020, but, for camera with LEICA Motor attached
68,035 EXOOM	Eveready Case, cowhide, with neckstrap, for LEICA Models II, III, IIIa or IIIb with XENON 50mm lens attached
68,040 EMOOX	Eveready Case, similar to No. 68,035, but for camera with Rapid Winder attached
68,045 EZOOK	Eveready Case, similar to No. 68,035, but for camera with LEICA Motor attached
68,050 ESFOO	Eveready Case, cowhide, with neck strap, for 250 Exposure Model LEICA No. 65,205
68,055 ETTWO	Combination Case, cowhide, with strap handle and shoulder strap; space for LEICA Camera, and ELMAR 50 and 90mm lenses, Universal View Finder, three filters and one extra magazine

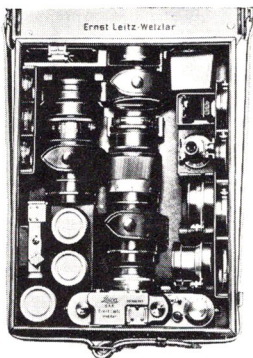
CARRYING AND PROTECTIVE CASES



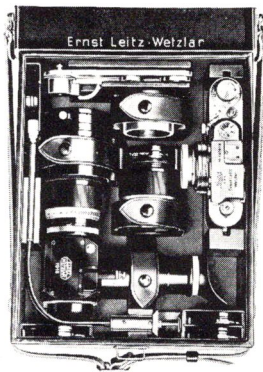
*No. 68,060
and equipment*



*No. 68,065
and equipment*



*No. 68,070
and equipment*



*No. 68,080
and equipment*

**Cat. No. and
Code Word**

68,060
ETTRE

Combination Case, cowhide, with strap handle and shoulder strap; space for LEICA Camera, three LEICA lenses, Universal View Finder, Angle View Finder or FOKOS Range Finder, two Front Lenses, one extra film magazine and two filters

68,065
ETNEU

Combination Case, cowhide, with strap handle and shoulder strap; space for LEICA Camera, four LEICA lenses, Universal View Finder, Angle View Finder or FOKOS Range Finder, Reflecting View Finder, three Front Lenses, two extra film magazines and five filters

Price

CARRYING AND PROTECTIVE CASES

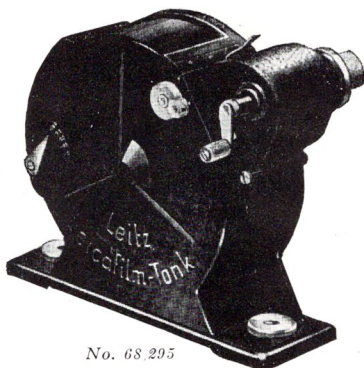
Cat. No. and Code Word		Price
68,070 ETGUS	Combination Case , cowhide, with strap handle and shoulder strap; space for LEICA Camera, five LEICA lenses, Universal View Finder, Angle View Finder or FOKOS Range Finder, Reflecting View Finder, three Front Lenses, three extra film magazines, sunshade and five filters	
68,075 ETMAX	Combination Case , cowhide, with strap handle and shoulder strap; space for LEICA Camera, seven LEICA lenses, Universal View Finder, Angle View Finder or FOKOS Range Finder, Reflecting View Finder, three Front Lenses, two extra film magazines, and four filters	
68,080 EYOOL	Combination Case , cowhide, with strap handle and shoulder strap, space for LEICA Camera, three LEICA lenses (any one of the 50mm lenses plus HEKTOR 135mm and TELYT 200mm with Mirror Reflex Housing), Rapid Winder and four filters	
68,085 ETTAS	Soft Leather Purse Case , for all LEICA Models except 250 exposure model with any of the following lenses: HEKTOR 28mm, HEKTOR 50mm, ELMAR 35mm, ELMAR 50mm, SUMMAR 50mm	
68,090 ERDOO	Soft Leather Purse Case , same as No. 68,085, but with zipper	
68,095 ETILA	Calf's Leather Case , for ELMAR 35mm or HEKTOR 28mm lenses	
68,100 ETIME	Calf's Leather Case , for ELMAR or HEKTOR 50mm lens	
68,105 ETTIG	Soft Leather Purse Case , for either HEKTOR 28mm and 50mm, or ELMAR 35mm and 50mm lenses (accommodates one lens only)	
68,110 ETBIX	Calf's Leather Case , for SUMMAR or XENON 50mm lens	
68,112 ETBUL	Soft Leather Case , for SUMMAR 50mm lens	
68,114 EXQOO	Soft Leather Case , for XENON 50mm lens	
68,115 ETTON	Soft Leather Purse Case , for ELMAR 90mm lens	
68,116 ETINI	Calf's Leather Case , for ELMAR 90mm lens	
68,117 ETTOX	Soft Leather Purse Case , for HEKTOR 73mm lens	
68,118 ETINX	Calf's Leather Case , for HEKTOR 73mm lens	
68,120 ETOSA	Calf's Leather Case , for either ELMAR 35mm and HEKTOR 73mm, or HEKTOR 28mm and 73mm in combination	
68,124 EQOOT	Calf's Leather Case , for THAMBAR 90mm lens	
68,125 ETTUM	Soft Leather Purse Case , for THAMBAR 90mm or HEKTOR 135mm lens	

CARRYING AND PROTECTIVE CASES



Cat. No. and Code Word		Price
68,126 ETIPO	Calf's Leather Case, for HEKTOR 135mm lens	
68,130 EMTOO	Calf's Leather Case, for TELYT 200mm lens with Mirror Reflex Housing No. 65,700	
68,134 ETISY	Calf's Leather Case, for either HEKTOR 28mm, or ELMAR 35mm, and HEKTOR 135mm lenses in combination	
68,140 EUVIL	Soft Leather Purse Case, for filters of 30mm and 34mm diameter	
68,142 EUVAT	Soft Leather Purse Case, for filters of 39mm and 48mm diameter and filters for XENON lens	
68,144 ETOOQ	Soft Leather Purse Case, for Automatic Slow Speed Timing Device No. 66,900	
68,148 VILUI	Brown Cowhide Leather Case, for VIDOM Finders No. 66,000 and 66,005	
68,158 AUFET	Brown Cowhide Leather Case, for Reflecting View Finder No. 66,050	
68,162 ETHOO	Brown Cowhide Leather Case, for Reflecting View Finders Nos. 66,055 and 66,060	
68,164 RWBOO	Soft Leather Purse Case, for Direct Vision View Finders Nos. 66,070, 66,075, 66,085 and 66,090	
68,166 RVZOO	Brown Cowhide Leather Case, for SUOOQ Special View Finders Nos. 66,100 and 66,102	
68,168 COOLG	Leather Case, accommodating any one of the Sport Finders Nos. 66,150 to 66,154	
68,178 WIOOK	Brown Cowhide Leather Case, for WINKO Angle View Finder No. 66,170	
68,182 WIVOO	Brown Cowhide Leather Case, for WINTU Angle View Finders Nos. 66,180 and 66,182, or for FOKOS Range Finders Nos. 66,250 and 66,251	
68,185 EUVER	Calf's Leather Case, for FOKIN, FONOR or FOFER Range Finders	
68,187 EUKOS	Calf's Leather Case, for FOKOS Range Finders	
68,188 EURUS	Soft Leather Purse Case, for FOKOS Range Finders or Angle Finders Nos. 66,180 and 66,182	

DARKROOM SUPPLIES



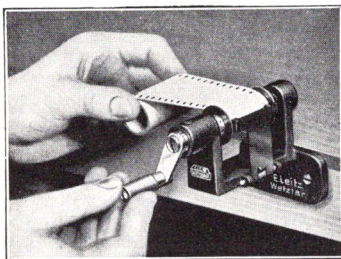
No. 68,295

Cat. No. and
Code Word

68,295
FOOVA

LEICA Film-Tank, to facilitate the loading of Leica and other magazines in daylight. Consists of a chamber which holds approximately 325 feet of 35mm film; a compartment in which the Leica magazine is inserted and loaded in daylight; a meter to indicate approximately the amount of film in the large chamber, and means for indicating the amount of film wound into the magazine. No parts of the Film-Tank touch the sensitive emulsion, preventing scratches

Price

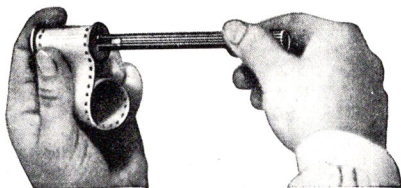


No. 68,305

68,305
AFLOO

Film Winder with spring clip for quickly winding film onto the LEICA magazine spool. This Winder will also take the large 250 Exposure Model spools

DARKROOM SUPPLIES



No. 68,310

**Cat. No. and
Code Word**

Price

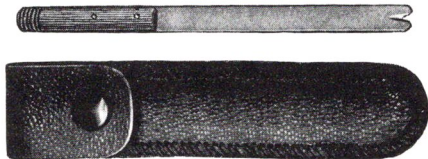
68,310 **Hand Film Winder**, for use in loading LEICA magazine spools in
 AGRIF darkroom



No. 68,320

68,320 **Film Trimming Guide**, of hinged metal, used to shape and trim
 ABLON ends of film for loading into film magazines

68,325 **Film Trimming Guide**, for use with film of 250 Exposure LEICA
 ANZOO No. 65,200, in case



No. 68,330

68,330 **Film Cutting Knife**, serves to cut the film while in the camera;
 ABCOO particularly desirable in connection with the 250 Exposure LEICA
 No. 65,200, in case



No. 68,340

68,340 **Film Holding Device**, for making single exposures with the LEICA
 FHKOO Camera (for darkroom loading)

DEVELOPING APPARATUS



No. 68,400



*No. 68,450
and 68,490*

**Cat. No. and
Code Word**

Price

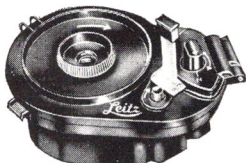
68,400 FETAN	REELO All Bakelite Developing Tank Model A for LEICA and all other 35mm cine film up to 5½ ft. lengths, complete with tank, lid, grooved reel and hand agitator
68,402 FEVIN	Extra Reel for REELO Tank Model A
68,405 FEVOP	REELO Tank Model A and lid only (without reel)
68,407 FEVUQ	Extra Lid for REELO Tank Model A
68,410 FETBE	REELO All Bakelite Developing Tank Model B for all roll films of the vest-pocket No. 127 size, complete with tank, lid, grooved reel and hand agitator
68,412 FESAR	Extra Reel for REELO Tank Model B
68,415 FETCA	REELO All Bakelite Developing Tank Model C for all roll films of the 2¼ x 3¼ in. No. 120 size, complete with tank, lid, grooved reel and hand agitator
68,418 FESCO	Extra Reel for REELO Tank Model C
68,420 NOZLE	Washing Nozzle for REELO Tanks A, B and C; facilitates washing of the film
68,430 DEFOO	LEITZ Reel Type Developing Tank for LEICA and all other 35mm cine film up to 5½ ft. length, complete with tank, lid, spiral reel, hand agitator and trimming guide
68,450 CORUN	CORREX All Bakelite Developing Tank , complete with reel, apron and hand agitator
68,452 COSTI	Hand Agitator for CORREX tank
68,455 CORID	Extra Reel for CORREX tank
68,458 CORYB	Extra Celluloid Apron for CORREX tank

DEVELOPING APPARATUS

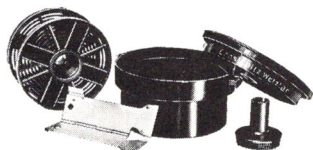
Cat. No. and
Code Word

Price

- 68,460** **CORREX Tank and Lid Only**, with hand agitator, without reel or apron
- COROL
- 68,462** **CORREX Tank Only**, without lid, hand agitator, reel or apron ..
- CORPE
- 68,465** **Extra Lid**, for CORREX tank
- CORCF



No. 68,480

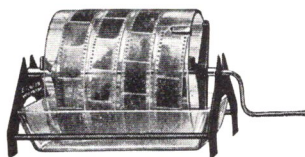


No. 68,450

- 68,480** **Daylight Loading Developing Tank** for LEICA and other 35mm cine films up to 5½ ft. lengths, permits loading film onto developing reel from LEICA Camera magazine or film cartridge, in daylight. Consists of tank, film loading mechanism, reel, lid, special built-in film cutting knife, trimming guide and hand agitator
- TAHOO
- 68,490** **Tank Thermometer**, calibrated in Fahrenheit for use with REELO, CORREX, Daylight Loading or LEITZ Reel Type tanks
- CORET



No. 68,490



No. 68,520

- 68,520** **Developing Drum Outfit**, complete with two glass trays, metal stand support for drum, and glass revolving drum. Especially useful for developing natural color film and positive film strips where it is necessary to observe the development of the image on the film
- FIMAN
- 68,522** **Glass Drum**, of developing drum outfit, No. 68,520 without axle
- FICYL
- 68,525** **Extra Metal Clip**, for developing drum outfit, No. 68,520
- FIXAM
- 68,528** **Glass Tray** of No. 68,520
- FISUL
- 68,540** **Holder for Single Negatives**, to facilitate handling cut LEICA Films with single exposures in the developing and fixing solution. Especially recommended for negatives exposed in the Single Exposure Camera No. 65,400 and film holder No. 73,840.
- FIALT

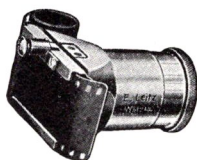
DEVELOPER

Cat. No. and
Code Word

Price

68,560 **Developer, Tetenal, Ultrafin S-F** (especially recommended for medium speed film) **per package**
ULTRA

NEGATIVE VIEWERS



No. 68,600

68,600 **LEICA Negative Viewer and Marker**, with polished metal film channel, film-notching punch, and magnifying lens. Permits negatives to be seen clearly, distinctly and greatly enlarged so that detail in each is quickly noted without the necessity of placing in enlarger
NATRA

68,610 **LEICA Negative Viewer and Marker**, similar to No. 68,600, but with handle
NAKUL

68,615 **Small Plate of Milk Glass**, with frame for attaching in front of the negative viewers No. 68,600 or 68,610 to provide diffused light
NAMAS

NEGATIVE FILE SYSTEMS

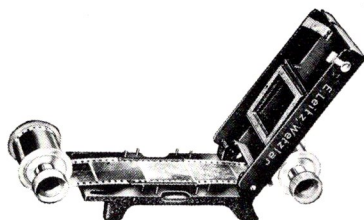
68,700 **Metal Filing Box**, with cover and sections for holding 25 rolls of LEICA film
FULIP

68,710 **LEICA Film Index**, containing transparent pockets for holding 36 LEICA negatives cut in strips of three negatives
FULLS

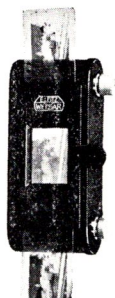
68,720 **Loose-Leaf File** with transparent pockets to hold films in strips of six containing 20 pages, one page accommodates 18 negatives
LOOSE

68,725 **Extra Pages**, for Loose-Leaf File No. 68,720 **each**
PAGES

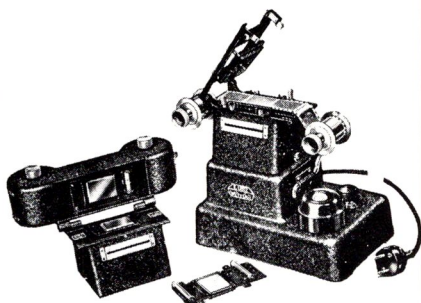
FILM AND SLIDE PRINTING APPARATUS



No. 68,800



No. 68,810



No. 68,848

Cat. No. and
Code Word

Price

68,800 ELDUR	LEICA Positive Printing Apparatus , for LEICA glass diapositives 50 x 50mm
68,810 ELDIA	ELDIA Printing Apparatus , for printing paper or film strips from LEICA negatives, complete with window for LEICA negatives
68,815 ELKIN	Reducing Window , for ELDIA Printer, No. 68,810, accommodating single frame negatives 18 x 24mm ($\frac{3}{4}$ x 1")
68,820 ELLEI	Window , for ELDIA Printer No. 68,810, accommodating standard LEICA 24 x 36mm negatives. (For replacement)

PROFESSIONAL PRINTERS

- 68,840
KOVIR
- Professional Printer** for making LEICA lantern slides on 2 x 2 in. (50 x 50mm.) glass plates, consisting of:
- (1) **Base Housing** with 15 Watt bulb for the exposure, built-in rheostat for the control of the exposure, opal glass disc for diffusion, ruby bulb for viewing the negative, device for dodging and two negative film spools.
 - (2) **Lantern Slide Attachment** with 1 x 1½ in. (24 x 36mm) masking window and holder for 2 x 2 in. (50 x 50mm) glass plates
- 68,842
KOFIM
- Professional Printer** for printing LEICA negatives on 35mm positive film rolls, consisting of:
- (1) **Base Housing** as described under item 1 of No. 68,840.
 - (2) **Positive Film Attachment** holding up to 33 ft. of 35mm positive film, with two spools, sprocket drive with catch device as a guide for winding the film and **non-interchangeable** masking window 1 x 1½ in. (24 x 36mm)

PROFESSIONAL PRINTERS

Cat. No. and
Code Word

Price

- 68,844** **Combination Professional Printer** for printing LEICA negatives on lantern glass plates 2 x 2 in. (50 x 50mm) and on 35mm positive film rolls, consisting of:
- (1) **Base Housing** as described under item 1 of No. 68,840.
- (2) **Lantern Slide Attachment** as described under item 2 of No. 68,840.
- (3) **Positive Film Attachment** as described under item 2 of No. 68,842
- 68,846** **Professional Printer** for printing LEICA negatives 1 x 1½ in. (24 x 36mm) or single frame negatives ¾ x 1 in. (18 x 24mm) on 35mm positive film rolls, consisting of:
- (1) **Base Housing** as described under item 1 of No. 68,840.
- (2) **Positive Film Attachment** holding up to 33 ft. of 35mm positive film, with two spools, sprocket drive with catch device as a guide for winding the film and **interchangeable** masking windows for 1 x 1½ in. (24 x 36mm) and ¾ x 1 in. (18 x 24mm).....
- 68,848** **Combination Professional Printer** for printing LEICA negatives 1 x 1½ in. (24 x 36mm) and single frame negatives ¾ x 1 in. (18 x 24mm) on 2 x 2 in. (50 x 50mm) glass plates and on 35mm positive film rolls, consisting of:
- (1) **Base Housing** as described under item 1 of No. 68,840.
- (2) **Lantern Slide Attachment** as described under item 2 of No. 68,840.
- (3) **Positive Film Attachment** as described under item 2 of No. 68,846.
- (4) **Masking Window** No. 68,878

ACCESSORIES FOR PROFESSIONAL PRINTERS

- 68,860** **Base Housing** for Professional Printer (item 1 of No. 68,840)
- KOLOM
- 68,862** **Lantern Slide Attachment** for Professional Printer (item 2 of No. 68,840)
- KOGLA
- 68,864** **Positive Film Attachment** with non-interchangeable masking window 1 x 1½ in. (24 x 36mm) (item 2 of No. 68,842)
- KOTOS
- 68,866** **Positive Film Attachment** with interchangeable masking windows for 1 x 1½ in. (24 x 36mm) and ¾ x 1 in. (18 x 24mm) films
- KOOHI
- 68,878** **Masking Window**, for Lantern Slide Attachment for Professional Printer, with ¾ x 1 in. (18 x 24mm) aperture
- KOREF
- 68,880** **Masking Window**, same as No. 68,878, but with 30 x 40mm aperture
- KONAF
- 68,882** **Masking Window**, same as No. 68,878, but with 40 x 40mm aperture
- KODRE

ACCESSORIES FOR PROFESSIONAL PRINTERS

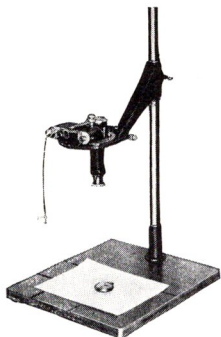
Cat. No. and Code Word		Price
68,884 KOSUS	Two Spools , for Professional Printer to take roll films of 30 x 40mm and 40 x 40mm size	
68,886 ELGLA	Metal Pressure Plate , for the Lantern Slide Attachment of Professional Printers Nos. 68,840, 68,844 and 68,848. This device permits the making of paper contact prints. It may also be used for ELDUR Printer No. 68,800	
68,890 OSROT	Ruby Observation Lamp , for all Professional Printers (for replacement)	
68,892 OSLAM	Lamp , 15-watt, for all Professional Printers (for replacement)	

MATERIAL FOR MOUNTING LANTERN SLIDES

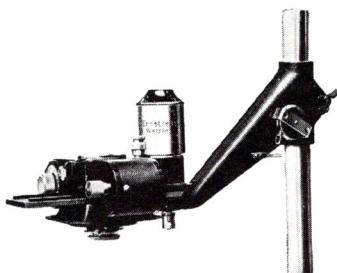
69,000 USTOL	Paper Slide Masks , aperture 24 x 36mm, for use with standard 50 x 50mm glass slides. One side is coated with a special tin-foil compound which deflects the heat from the lamp housing and protects the slide from excessive heat per hundred
69,005 ULSMA	LEICA (Medium) 50 x 50mm Lantern Plates , for black tones. Grade A glass
69,010 ULSOB	LEICA (Contrast) 50 x 50mm Lantern Plates , for black tones. Grade A glass
69,015 UGLAS	Cover Glass Plates, 35 x 120mm , for mounting three stereo pictures or three film positives
69,020 UGLIT	Cover Glass Plates, 50 x 50mm , for mounting glass positives, per hundred
69,025 LANCA	Case for LEICA Lantern Slides , capacity 100 slides, 50 x 50mm
69,030 UMASK	Black Paper Masks, 50 x 50mm with 24 x 36mm aperture per hundred
69,035 UMKLE	Black Gummed Paper, 1/2 in. wide, 250 ft. long , for binding glass positives, per roll
69,040 CELLU	Scotch Cellulose Binding Tape, black, 2592 in. per roll, 1/2 in. wide. (This tape is opaque and makes a very smooth and attractive slide binding material.)
69,042 CERED	Scotch Cellulose Binding Tape , same as No. 69,040, but red, per roll
69,050 UMDOO	Mounting Kit for Leica Color Films , consisting of 25 metal changing frames, 50 glass plates 2 x 2 in. (50 x 50mm), 25 tin-foil folding masks, and case for 25 slides
69,055 UDOOL	Folding Masks as used in No. 69,050

COPY AND REPRODUCTION APPARATUS

ROTATING FOCUSING COPYING ATTACHMENTS



*No. 70,000 with No. 70,020
and LEICA attached to upright
with baseboard of enlarger*



*No. 70,010
with No. 70,020 and LEICA 250
attached to upright*

**Cat. No. and
Code Word**

Price

70,000 **Rotating Focusing Copying Attachment**, consisting of rotating
OORES stage which holds the LEICA Camera and ground glass focusing
screen with clear glass center

NOTE: THE COPYING ATTACHMENT NO. 70,000 CAN BE USED
FOR FOCUSING AT ANY DISTANCE INCLUDING INFINITY.

70,010 **Focusing Copying Attachment**, similar to No. 70,000 but with a
GRBOO dove-tailed slide arrangement, for use with 250 Exposure Model
LEICA

70,020 **Sliding Arm**, for attaching the Focusing Copying Attachments
GOORM Nos. 70,000 or 70,010 to upright of enlarger

(This Sliding Arm fits all uprights of 1¼ in. diameter.)
NOTE: THE FOCUSING COPYING ATTACHMENTS NOS. 70,000
OR 70,010 TOGETHER WITH THE SLIDING ARM CAN BE
ATTACHED TO THE VERTICAL UPRIGHT OF THE LEICA
UNIVERSAL ENLARGERS. IF AN ENLARGER IS NOT AVAIL-
ABLE, THE BASEBOARD AND UPRIGHT MAY BE PURCHASED
SEPARATELY. SEE ALSO NOS. 70,170, 70,180, 70,195, 70,220 AND
70,520/532.

70,040 **Focusing Magnifier 5X**, for use on Copying Attachments Nos.
LGOOO 70,000 and 70,010

70,045 **Large Wide-field Focusing Magnifier 5X**, permitting to view the
LVFOO entire field of the image at one glance, for use on Copying Attach-
ments Nos. 70,000 and 70,010

70,050 **Large Wide Field Angular Focusing Magnifier 5X**, similar to No.
LKIOO 70,045, but with reflecting mirror permitting to view the ground
glass focusing screen in horizontal direction

70,055 **Focusing Magnifier 30X**, for increased exactitude in focusing, for
LWHOO use on Copying Attachments Nos. 70,000 and 70,010

COPY AND REPRODUCTION APPARATUS



No. 70,045



No. 70,120



No. 70,070



No. 70,075

**Cat. No. and
Code Word**

- | | |
|---|--|
| <p>70,070
ZWTOO</p> | <p>Intermediate Focusing Mount, for conveniently focusing the 50mm ELMAR lens when used with Copying Attachments Nos. 70,000 and 70,010. With this focusing mount the lens can be focused at any distance between ∞ and 16.5 in. At 16.5 in. the reduction is 1/6....</p> |
| <p>70,072
ZWTOO-
HESUM</p> | <p>Intermediate Focusing Mount, same as No. 70,070 but for use with HEKTOR and SUMMAR 50mm lenses</p> |
| <p>70,075
BOOXZ</p> | <p>Extension Tube (7mm) "B", giving reductions of from 1/3 to 1/2.5, or, in conjunction with intermediate focusing mounts Nos. 70,070 or 70,072 from 1/5 to 1/4. For use on Nos. 70,000 and 70,010</p> |
| <p>70,078
MOOBG</p> | <p>Extension Tube (16mm) "M.1:2", giving reductions in the ratio of 1/2. For use on Nos. 70,000 and 70,010</p> |
| <p>70,080
MOODH</p> | <p>Extension Tube (24.5mm) "M.1:1.5", giving reductions in the ratio of 1/1.5. For use on Nos. 70,000 and 70,010</p> |
| <p>70,082
MOOGW</p> | <p>Extension Tube (41mm) "M.1:1", giving reproductions in natural size. For use on Nos. 70,000 and 70,010</p> |

NOTE: WHILE IT IS QUITE SATISFACTORY TO USE THE 50mm LENSES FOR ORDINARY COPY WORK, SUCH AS REPRODUCTION OF MANUSCRIPTS, ETC., THE PERSPECTIVE CAN BE GREATLY IMPROVED BY USING ONE OF THE LONG FOCUS LEICA LENSES, ESPECIALLY WHEN PHOTOGRAPHS OF OBJECTS ARE TAKEN WHICH HAVE A CERTAIN DEPTH. THE 90 AND 135mm LEICA LENSES WOULD NOT ALLOW OF FOCUSING AT ANY DISTANCE UP TO INFINITY WHEN USED IN THE FOCUSING COPYING ATTACHMENTS WITH THEIR STANDARD FOCUSING MOUNTS. FOR THIS REASON WE RECOMMEND THE **SPECIAL FOCUSING MOUNTS NOS. 70,120, 70,122 AND 70,125**, WHICH CAN BE FOCUSED AT ANY DISTANCE UP TO INFINITY. FOR SHORTER DISTANCES AT GREATER MAGNIFICATIONS THEY ARE USED IN CONJUNCTION WITH ANY OF THE EXTENSION TUBES NOS. 70,075 TO 70,082 AND 70,400 TO 70,440.

- | | |
|--------------------------------|--|
| <p>70,120
COOED</p> | <p>Special Short Focusing Mount, for the ELMAR 90mm lens for use with Nos. 70,000 and 70,010</p> |
| <p>70,122
COOTL</p> | <p>Special Short Focusing Mount, for the THAMBAR 90mm lens, for use with Nos. 70,000 and 70,010</p> |

Price

COPY AND REPRODUCTION APPARATUS

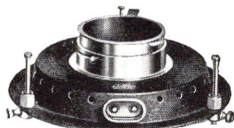
Cat. No. and
Code Word

Price

- 70,125** **Special Short Focusing Mount**, for the HEKTOR 135mm lens, for
COOHS use with Nos. 70,000 and 70,010
- 70,128** **Extension Tube**, for the TELYT 200mm lens, for use with Nos.
MOORB 70,000 and 70,010



No. 70,105



No. 70,150

- 70,140** **Intermediate Adapter** with correction lens, for use with Nos. 70,000
TBKOO and 70,010, when making photomicrographs
- 70,142** **Light-Excluding Ring**, for making light-tight connection between
LSZOO intermediate adapter No. 70,100 and microscope when making
photomicrographs with Nos. 70,000 and 70,010

NOTE: IT IS NECESSARY TO USE BOTH CAT. NOS. 70,140 AND 70,142 FOR PHOTOMICROGRAPHY WITH CAT. NOS. 70,000 AND 70,010.

- 70,150** **Copying Ring Illuminator**, giving full, uniform illumination free
RIOOZ from reflections and shadows of any kind, on small objects. Any
desired lighting effect can be obtained by moving the masking
rings within the ring illuminator and by adjusting it in height;
for Nos. 70,000, 70,010, 70,325, 70,330, 70,350 and 70,355

- 70,155** **Rheostat Adjustable** for 110-220-volt, fitted with ammeter, including
RFUOO electric cord, 5 ft. long, with plug. For use with Ring Illuminator
No. 70,150

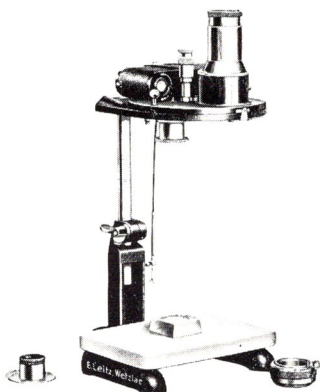
(THIS RHEOSTAT IS REQUIRED FOR USE WITH THE COPYING RING ILLUMINATOR.)

- 70,170** **Collapsible Upright Pillar, with table clamp** in three sections, total
ZSLOO height 3 ft., 1/4 in. diameter

- 70,172** **Further Intermediate Portions** (middle sections of the above Up-
YQHOO right) 1 ft. long

NOTE: THE COLLAPSIBLE UPRIGHT PILLAR WITH TABLE CLAMP NO. 70,170 WILL BE FOUND VERY USEFUL WHEN TRAVELING FOR SUPPORTING THE FOCUSING COPYING ATTACHMENTS NOS. 70,000, 70,010, 70,325, 70,330, 70,350 AND 70,355 IN PLACE OF THE UPRIGHT OF AN ENLARGER. THE COPYING DEVICES ARE ATTACHED TO THE UPRIGHT WITH THE SLIDING ARMS NOS. 70,020 OR 70,370. THE INTERMEDIATE PORTIONS SERVE FOR INCREASING THE HEIGHT OF THE UPRIGHT.

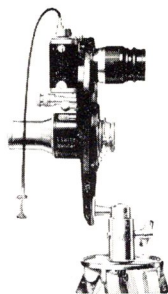
COPY AND REPRODUCTION APPARATUS



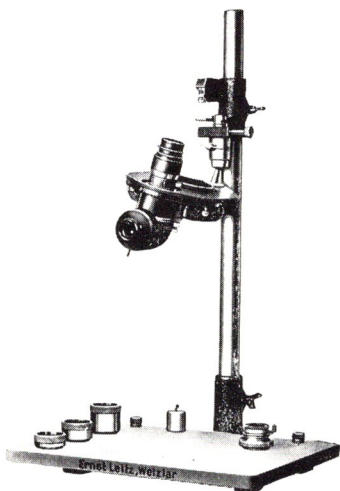
No. 70,055

No. 70,070 and 70,075

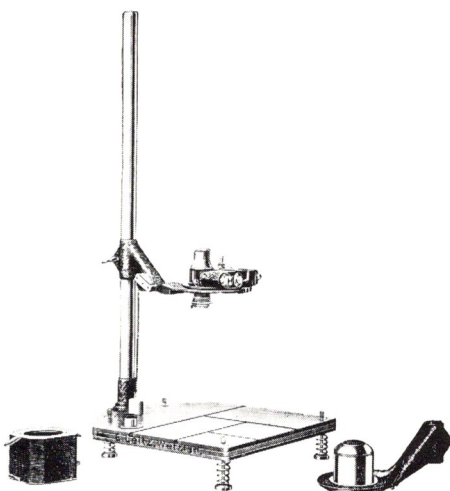
No. 70,000 with LEICA,
Magnifier No. 70,040
attached to Stand
No. 70,180



No. 70,000 with LEICA,
Magnifier No. 70,040 and
No. 70,185 attached to a Tripod

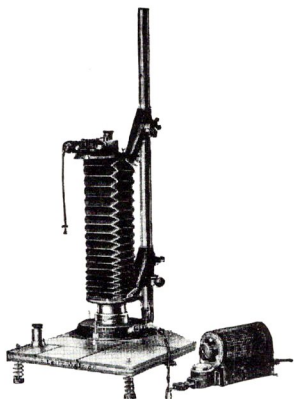


No. 70,195 with No. 70,200,
70,185, 70,000, 70,050 and
LEICA with Lenses and
Extension Tubes

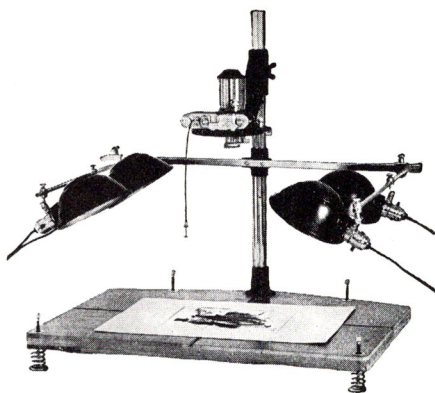


No. 70,220 with Nos. 70,000,
70,020, 70,040, 70,055,
70,230 and 70,240.
LEICA with Lens also shown

COPY AND REPRODUCTION APPARATUS



Nos. 70,000, 70,020, 70,040,
70,055, 70,150, 70,155, 70,220,
70,230, 70,240 and LEICA Camera

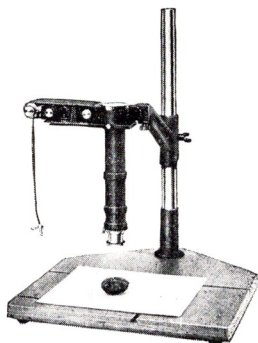


Nos. 70,220 with 70,000, 70,020, 70,045,
LEICA Camera with Lens and Illuminator No. 70,680

Cat. No. and Code Word		Price
70,180 SPOOV	Special Horseshoe Stand adjustable in height with white-surfaced board for the specimen, for the Copying Attachments Nos. 70,000 and 70,010	
70,185 KGOON	Large Ball and Socket Head , similar to the regular LEICA ball and socket tripod head but larger and heavier, for attaching focusing Copying Attachments Nos. 70,000 and 70,010 to tripod or horseshoe stand when photographing with the camera and rotary stage in a horizontal direction	
70,190 ZTNOO	Adapter , for accommodating cameras or accessories with foreign tripod base to those having American tripod base, and vice versa (This adapter is required for the Rotating Focusing Copying Attachments No. 70,000 and 70,010 when used on a tripod stand.)	
70,195 SPMOO- DOOSL	Large Horseshoe Stand with upright 25 in. high, 1¼ in. diameter and base board for specimens, for use with the Copying Attachments Nos. 70,000 and 70,010	
70,200 GOOZQ	Short Sliding Arm with tape measure for attaching the Rotating Focusing Copying Device to the Large Horseshoe Stand	
70,220 VAFOO	Base Board , 19 x 27 in., with upright 4 ft. high, 1¼ in. diameter, with vibration absorbing, four-spring base, with cord, plug and switch for the illuminating units	
70,230 UNOOB	Sliding Arm with lens holder and variable bellows (lower stage) for use with Rotating Focusing Copying Attachment, for copying work at a magnification on the negative from 3 to 10 diameters ..	
70,240 STUOO	Steel Tape Measure with holder and weight	
70,250 FDBOO	Fine Focusing Adjustment for the lower or upper stage	

COPY AND REPRODUCTION APPARATUS

SLIDING FOCUSING COPYING ATTACHMENTS



No. 70,390

No. 70,325 equipped with LEICA Camera and extension tubes, attached by sliding arm No. 70,370 to upright with baseboard.

Cat. No. and Code Word

Price

- | | |
|-----------------|--|
| 70,325
FULDY | Sliding Focusing Copying Attachment, Model 1 , consisting of sliding attachment which holds LEICA Camera and ground-glass focusing screen |
| 70,330
COPIN | Sliding Focusing Copying Attachment, Model 1 , same as No. 70,325, but with special focusing screen which has a calibrated clear glass strip for critical focusing |
| 70,350
FULET | Focusing Copying Attachment, Model 2 , similar to No. 70,325, but does not contain the sliding camera attachment. The ground-glass screen is manually removed to make space for the LEICA Camera. Other than the inconvenience involved, it produces the same results as No. 70,325 |
| 70,355
COSLA | Focusing Copying Attachment, Model 2 , same as No. 70,350, but with special focusing screen which has a calibrated clear glass strip for critical focusing |
| 70,370
VEARM | Sliding Arm , for attaching LEICA and Copying Attachments Nos. 70,325, 70,330, 70,350 and 70,355 to upright of Enlargers Nos. 73,000, 73,010, 73,100 and 73,215 |

NOTE: THE FOCUSING COPYING ATTACHMENTS TOGETHER WITH THE SLIDING ARM CAN BE ATTACHED TO THE VERTICAL UPRIGHT OF THE LEICA UNIVERSAL ENLARGERS. IF AN ENLARGER IS NOT AVAILABLE, THE BASEBOARD AND UPRIGHT MAY BE PURCHASED SEPARATELY.

- | | |
|-----------------|--|
| 70,380
VEHAL | Sliding Arm , for attaching LEICA and Copying Attachments Nos. 70,325, 70,330, 70,350 and 70,355 to upright of enlargers Nos. 73,040, 73,110 and 73,300 |
|-----------------|--|

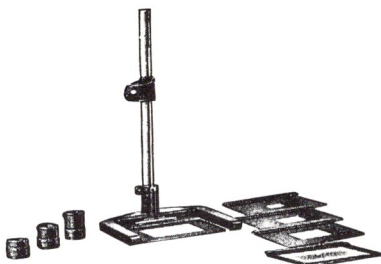
COPY AND REPRODUCTION APPARATUS

Cat. No. and
Code Word

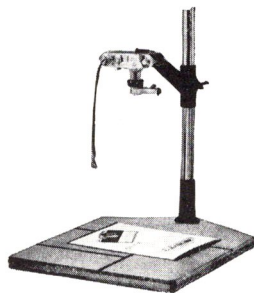
Price

<p>70,390 LGCCO</p>	<p>Magnifier 5X with adjustable collar for Sliding Focusing Copying Attachments, Models Nos. 1 and 2, as well as Nos. 70,000 and 70,010</p> <p>NOTE: ALSO SEE 30X MAGNIFIER NO. 70,055. WHEN THIS MAGNIFIER IS USED THE COPYING ATTACHMENTS NOS. 70,325 OR 70,350 SHOULD BE EQUIPPED WITH A SPECIAL FOCUSING SCREEN WHICH HAS A CALIBRATED CLEAR GLASS STRIP, WHICH CAN BE OBTAINED at \$5.55 additional and an installation charge of \$1.65. THE SLIDING FOCUSING COPYING ATTACHMENTS NOS. 70,330 AND 70,355 HAVE A CALIBRATED CLEAR GLASS STRIP ON THE FOCUSING SCREEN.</p>
<p>70,400 FULOR</p>	<p>1.2cm Extension Tube, for use with Copying Attachments Nos. 70,000, 70,010, 70,325, 70,330, 70,350 and 70,355</p>
<p>70,410 UBECD</p>	<p>2.2cm Extension Tube, for use with Copying Attachments Nos. 70,000, 70,010, 70,325, 70,330, 70,350 and 70,355</p>
<p>70,420 FULFO</p>	<p>3cm Extension Tube, for use with Copying Attachments Nos. 70,000, 70,010, 70,325, 70,330, 70,350 and 70,355</p>
<p>70,430 FULGX</p>	<p>6cm Extension Tube, for use with Copying Attachments Nos. 70,000, 70,010, 70,325, 70,330, 70,350 and 70,355</p>
<p>70,440 FULHI</p>	<p>9cm Extension Tube, for use with Copying Attachments Nos. 70,000, 70,010, 70,325, 70,330, 70,350 and 70,355</p>

COLLAPSIBLE TABLE REPRODUCTION DEVICE



No. 70,500/510



Nos. 70,520, 70,522, 70,550,
LEICA and Angle View Finder

70,500
OOZIS

Collapsible Table Reproduction Device, particularly useful when on trips and for work in archives, libraries, etc. It is comparatively small in size, light in weight and when collapsed very convenient to carry. This reproduction device consists of a horseshoe base with upright; mounted to the latter is an arm permitting vertical adjustment. A rod situated parallel to the upright contains notches by means of which the sharp focus of lenses upon the specimen plane is facilitated, metal masks (of which five are included) indicate the area covered by various objectives at various distances. To facilitate the variation within the covered area, adapter rings (not included in this outfit, but listed separately under No. 70,510) are required to be placed between camera and objectives

70,510
OOZKU

Set of Five Adapter Rings, of different lengths

COPY AND REPRODUCTION APPARATUS

SIMPLIFIED COPYING DEVICES

Cat. No. and Code Word		Price
70,520 EFFFU	Baseboard , 15¼ x 18 in., with upright 20 in. high, 1¼ in. diameter	
70,522 FELIF	Sliding Arm , short, for upright of 1¼ in. diameter, to carry the LEICA Camera	
70,524 VELTU	Baseboard 15¼ x 18 in., with upright 40 in. high, 1¼ in. diameter	
70,526 ROOMB	Sliding Arm , extra long, for upright of 1¼ in. diameter, to carry the LEICA Camera	
70,530 VESTA	Baseboard , 20 x 24 in., with upright 4 ft. high, 2 in. diameter	
70,532 VEHAL	Sliding Arm for upright of 2 in. diameter to carry the LEICA Camera	
70,538 STAMA	Steel Tape Measure for conveniently setting the correct distance of the camera, self-rolling, with weight, attachable to any of the sliding arms	
70,540 VEHIC	Ground Glass Housing for the exact determination of the boundaries of the image, complete, with 5X viewing magnifier and cover-plate for the lens opening of the LEICA Camera, for use on sliding arms Nos. 70,522, 70,532 and 70,536	
70,550 WZCOO	Adapter , for use of the Angle View Finder Nos. 66,180 and 66,182 in connection with reproduction stands	
70,555 WICAB	Adapter , for use of the Angle View Finder No. 66,170	
	(With these adapters the Angle View Finders are attached in front of the LEICA lens and can be used in this way for the alignment and for determining the size of the picture.)	
70,560 FLOTH	Plumb Weight for the alignment of the LEICA Camera when used in copying work	

SUPPLEMENTARY FRONT LENSES

Note: Front Lenses serve for focusing the 50mm ELMAR, HEKTOR and SUMMAR lenses at distances below 3½ ft. in copying work and when photographing small objects. They are not required for use with the Rotating and Sliding Focusing Attachments.

70,570 ELPRO	Front Lens I , for ELMAR 50mm lens (covers areas from 16⅞ x 24⅓ to 8⅞ x 12⅞ in.)
70,580 ELPIK	Front Lens II , for ELMAR 50mm lens (covers areas from 8⅞ x 12⅞ to 5⅞ x 8½ in.)
70,590 ELPET	Front Lens III , for ELMAR 50mm lens (covers areas from 4¼ x 6⅞ to 3⅞ x 5 in.)
70,600 VMCOO	Front Lens Adapter , for accommodating ELMAR front lenses on SUMMAR 50mm lens

COPY AND REPRODUCTION APPARATUS

Cat. No. and
Code Word

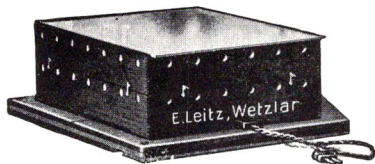
Price

70,610 HEPRO	Front Lens I , for HEKTOR 50mm lens (covers area same as Front Lens No. 70,570)
70,620 HEPIK	Front Lens II , for HEKTOR 50mm lens (covers area same as Front Lens No. 70,580)
70,630 HEPET	Front Lens III , for HEKTOR 50mm lens (covers area same as Front Lens No. 70,590)
70,640 VORGI	Front Lens Adapter , for accommodating HEKTOR front lenses on SUMMAR 50mm lens
70,650 FIRGI	Adapter Ring , for attaching LEICA filters on 50mm lenses when a front lens is being used on camera lens

ILLUMINATING DEVICES

70,675 STALI	Illuminator , with two 60-watt 110-volt opal lamps, cord and plug, for all Rotating, Sliding and Simplified Copying Apparatus.....
70,680 STYYX	Illuminator for Copying work, for use with any of the Rotating or Sliding Copying Attachments new, improved model with four 60-watt, 110-volt lamps. The lamps and lamp holders can be adjusted in two directions horizontally for evenly illuminating the area. The lamps are also provided with ball-jointed sockets and can be tilted in any direction. The entire illuminator is adjustable in height on the upright independent of the focusing devices. For use with uprights of 1¼ in. (3.2cm) diameter
70,682 ILLUM	Illuminator , same as No. 76,680, for use with uprights of 2 in. (5cm) diameter
70,685 FILIF	Frosted Lamp , 60-watt 110-volt (for replacement)

ACCESSORIES FOR COPYING X-RAY AND OTHER NEGATIVES AND FILMS



No. 70,820



No. 70,570

70,800 VEKOT	Illuminator Box , 5 x 7 in. for copying ordinary or X-ray negatives and films with the LEICA camera. The size of the illuminated area is 5 x 7 in. (13 x 18cm). Equipped with four OSRAM ZIER lamps, 15-watt, 110-volt and ground and opal glass plates
70,802 VERYK	Glass Plate for above, for holding films flat
70,805 VIKUL	Illuminator Box , 9½ x 12 in. (24 x 30cm), same as No. 70,800, but with three SOFIT lamps, 25-watt, 110-volt, giving a better and more even illumination
70,807 VIRUP	Glass Plate for above, for holding films flat
70,810 VEPUT	Illuminator Box , 12 x 16 in. (30 x 40cm), same as No. 70,800, but with four SOFIT lamps, 25-watt, 110-volt
70,812 VELYP	Glass Plate for above, for holding films flat

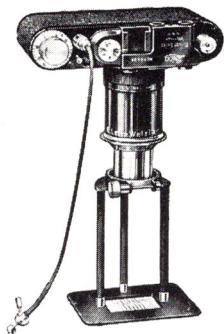
COPY AND REPRODUCTION APPARATUS

Cat. No. and
Code Word

Price

- 70,820** **Illuminator Box**, 16 x 20 in. same as No. 70,800, but with illuminated area of 16 x 20 in. (40 x 50cm) and with six frosted SOFIT lamps, 25-watt, 110-volt
- VEKAS
- NOTE: THE ABOVE ILLUMINATOR BOXES CAN BE USED IN CONNECTION WITH THE ROTATING, SLIDING AND SIMPLIFIED COPYING APPARATUS.**
- 70,825** **Connecting Cord**, 11½ ft. (3½ meters) long, with plug and bell switch, for illuminator boxes
- VEDUK
- 70,830** **OSRAM-ZIER Lamp**, 15-watt, 110-volt, as replacement for the illuminator box No. 70,800
- OSLAM
- 70,835** **SOFIT Lamp**, 25-watt, 110-volt, 28cm long, frosted as replacement for illuminator boxes Nos. 70,805, 70,810 and 70,820
- SOFIT

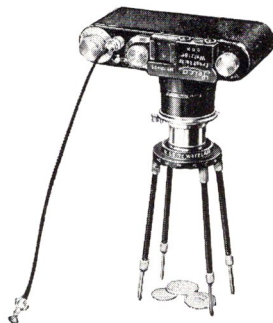
AUXILIARY REPRODUCTION DEVICES



No. 70,900 with LEICA



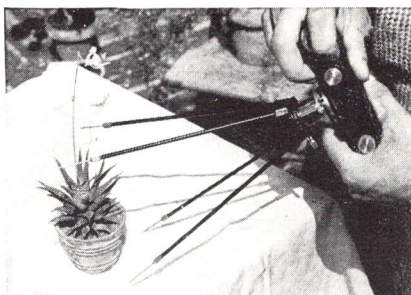
No. 70,990



No. 70,922 with LEICA

- 70,900** **Auxiliary Reproduction Device**, for use with LEICA Camera and interchangeable ELMAR 50mm lens, for 1:1 reproductions—the image on the negative being the same size as the object copied. Consists of an intermediate collar marked 1:1, clamping collar for lens, baseplate with cut-out portion to indicate the area reproduced, and three knurled connecting rods
- BELUN
- 70,912** **Auxiliary Reproduction Device**, same as No. 70,900, but for Summar 50mm lens
- BESUM
- 70,915** **Set of Three Knurled Rods**, to enable the use of the SUMMAR 50mm lens with Device No. 70,900
- BETRY
- 70,920** **Auxiliary Reproduction Device**, same as No. 70,900 but for ELMAR 35mm lens
- BEINS

COPY AND REPRODUCTION APPARATUS



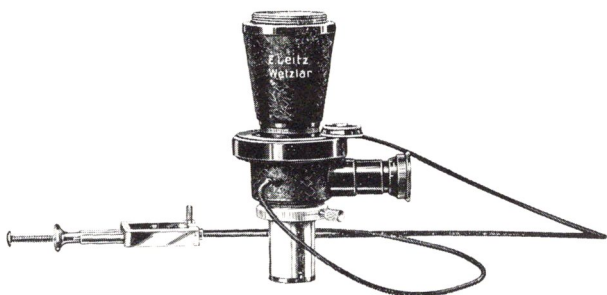
No. 70,940 in use

**Cat. No. and
Code Word**

Price

- | | |
|---|--|
| 70,922
BEHOO | <p>Auxiliary Reproduction Device, for LEICA with interchangeable ELMAR or SUMMAR lenses 50mm, for photographing small objects in slightly reduced size (scale 1:1.5, 1:2 and 1:3), the size limit of the object for the three possible settings is $1\frac{7}{8} \times 2\frac{1}{8}$, $1\frac{1}{8} \times 2\frac{7}{8}$ or $2\frac{7}{8} \times 4\frac{1}{4}$ in. consisting of three different intermediate collars marked 1:1.5, 1:2 and 1:3, universal clamping ring and four adjustable legs, with bands indicating distances (white bands for ELMAR and yellow bands for SUMMAR lenses)</p> |
| 70,925
BEKUR | <p>Auxiliary Reproduction Device, same as No. 70,922, but for ELMAR 35mm lens</p> |
| 70,940
BEOOY | <p>Setting Device, for the LEICA Camera, with interchangeable lenses ELMAR, HEKTOR or SUMMAR 50mm focus in connection with supplementary Front Lenses Nos. 2 or 3, consisting of clamping ring and four adjustable legs, with bands indicating distances (white bands for ELMAR and HEKTOR lenses, and yellow bands for SUMMAR lens). The size limit of the object for the three possible settings is $3\frac{3}{8} \times 5$, $4\frac{1}{4} \times 6\frac{1}{8}$ and $5\frac{5}{8} \times 8\frac{1}{2}$ in.</p> |
| 70,942
BETAB | <p>Four Extension Rods, for Setting Device No. 70,940 for use with Front Lens No. 2 with the focusing mount of the camera lens set at infinity, size of the object $8\frac{7}{8} \times 12\frac{5}{8}$ in.</p> |
| 70,950
BAZOO | <p>Universal Focusing Arrangement, which combines the working possibilities of the devices No. 70,922 and No. 70,940, consisting of a universal clamping ring which fits the two sets of extension legs for the BEHOO and BEOOY attachments, three intermediate extension tubes with markings 1:1.5, 1:2 and 1:3 and four auxiliary rods No. 70,942</p> |
| <p>Note: For Supplementary Front Lenses to be used with Nos. 70,940, 70,942 and 70,950, see page 45.</p> | |
| 70,990
BELOS | <p>Small Illuminating Lamp, with 25-watt 110-volt bulb</p> |
| 70,992
BERAT | <p>Replacement Bulb, 25-watt, 110-volt, for No. 70-990</p> |

APPARATUS FOR PHOTO-MICROGRAPHY

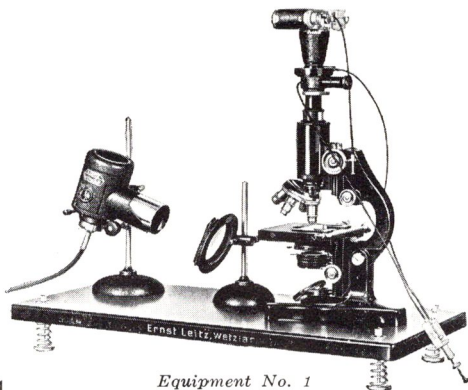


No. 72,005 with No. 72,010

Cat. No. and Code Word		Price
72,000 MIOOP	Micro Adapter , for attaching LEICA Camera to draw-tube of microscope to enable photomicrographs to be made with the LEICA lens set at infinity	
72,005 MIKAS	Micro Ibsa Attachment , for the LEICA Camera for use in taking photographs through the microscope. This attachment is equipped with a conical extension tube, with correction lens giving an initial magnification of $\frac{1}{2}$ X, Ibsor shutter, with speeds of 1 second to 1/25 second, angular viewing telescope for focusing and viewing the microscopic image, with swing-out prism, Periplan 10X eyepiece and two wire cable releases, complete in case	
72,010 CALOS	Automatic Release , for instantaneous exposures, by means of which the prism for the viewing telescope is swung out and the shutter opened consecutively, permitting to observe the object immediately before and after the exposure	
72,015 GHEF	Conical Extension Tube , with correction lens of $\frac{1}{3}$ X initial magnification, for Micro Ibsa Attachment	
72,020 GHMW	Conical Extension Tube , with correction lens of $\frac{1}{2}$ X initial magnification, for Micro Ibsa Attachment	
72,025 GHNK	Conical Extension Tube , with correction lens of 1X initial magnification, for Micro Ibsa Attachment	
72,030 GHFT	Wire Cable Release , 18 in. long, for Micro IBSO Attachment	
72,035 GHBR	Wire Cable Release , same as No. 72,030, but with set screw	

EQUIPMENTS FOR SCIENTIFIC AND INDUSTRIAL PHOTOGRAPHY

These are combinations of various LEICA accessories and various pieces of Leitz microscopic equipment which bring new convenience to photography in certain, specialized fields. The LEICA accessories recommended are also listed in various other sections of this catalog under different catalog numbers but the same code-words. The equipments are listed with a Standard Model LEICA. Any other LEICA model however, may be used in its place. Likewise, other microscopes may be substituted for the microscope outfits listed with equipments Nos. 1, 2 and 3.



Equipment No. 1

EQUIPMENT No. 1 FOR PHOTO-MICROGRAPHY WITH A MICROSCOPE AND MICRO IBSO ATTACHMENT

Cat. No. and
Code Word

Price

72,100 BEMTI	LEITZ Microscope, Model B , with interchangeable monocular tube, substage b, with three-lens condenser N.A. 1.40, with centering mount, built-in square mechanical stage, triple nosepiece, achromatic objectives: 24mm (magnification 3.2X), 13mm (magnification 14X), 4mm (magnification 45X), oculars: huyghens 6X and periplan 10X, in wooden case
72,102 MEWIN	Baseboard on springs, protecting the microscope from vibration
72,104 BEECH	LEITZ Universal Microscope Lamp MONLA on adjustable stand with low-voltage lamp, 6-volts 5-amperes with adjustable condenser
72,106 REDYX	Regulating Transformer for A.C. only, 110/220 volts, with electric cord and plug for use with lamp No. 72,104
72,108 IFSTA- DTEEO	Adjustable Stand with Lifa filter No. 200b, yellow-green
72,110 LENOT	LEICA Camera, Standard Model , without lens
72,112 FINOT	Wire Release with set screw for LEICA Camera

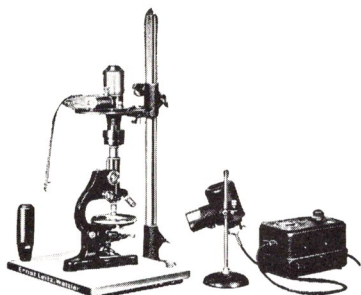
EQUIPMENTS FOR SCIENTIFIC AND INDUSTRIAL PHOTOGRAPHY

Cat. No. and Code Word	Price
72,114 MIKAS	Micro Ibsso Attachment
72,116 CALOS	Automatic Release for instantaneous exposures
72,118 OBXAD	EQUIPMENT NO. 1 COMPLETE

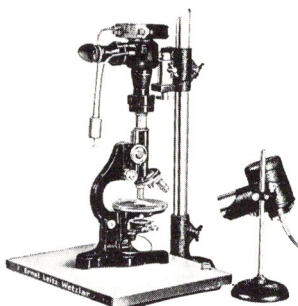
EQUIPMENT No. 2 FOR PHOTO-MICROGRAPHY WITH A MICROSCOPE AND THE ROTATING FOCUSING COPYING ATTACHMENT

72,130 ELESS	LEITZ Microscope Model LS , with substage c, with three-lens condenser, with centering mount, square, built-on mechanical stage, triple nosepiece, achromatic objectives: 24mm (magnification 3.2X), 13mm (magnification 14X), 4mm (magnification 45X), oculars: huyghens 6X and periplan 10X, in wooden case
72,132 BEECH	LEITZ Universal Microscope Lamp MONLA , on adjustable stand with low-voltage lamp, 6-volts 5 amperes with adjustable condenser
72,134 REDYX	Regulating Transformer for A.C. only, 110/220 volts, with electric cord and plug, for use with lamp No. 72,132
72,135 IFSTA- DTEEO	Adjustable Stand with Lifa Filter No. 200b, yellow-green
72,136 SPMOO- DOOL	Large Horseshoe Stand with upright 25 in. high, 1¼ in. diameter, with baseboard
72,138 GOOZQ	Short Sliding Arm with tape measure for attaching the Rotating Focusing Copying Device to upright
72,140 OORES	Rotating Focusing Copying Attachment
72,150 LVFOO	Large Widefield Focusing Magnifier 5X
72,152 LWHOO	Focusing Magnifier 30X
72,154 GHIEF	Conical Extension Tube with correction lens of ⅓X initial magnification
72,156 GIIMW	Conical Extension Tube with correction lens of ½X initial magnification
72,158 GIINK	Conical Extension Tube with correction lens of 1X initial magnification
72,160 LSZOO	Light-Excluding Ring for making light-tight connection between the microscope and the extension tube
72,162 LENOT	LEICA Camera, Standard Model , without lens
72,164 FINOT	Wire Release with set screw for LEICA Camera
72,166 TWOPL	EQUIPMENT NO. 2 COMPLETE

EQUIPMENTS FOR SCIENTIFIC AND INDUSTRIAL PHOTOGRAPHY



Equipment No. 2



Equipment No. 3

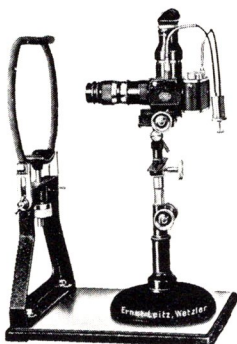
EQUIPMENT No. 3 FOR PHOTO-MICROGRAPHY WITH A MICROSCOPE AND THE LEICA WITH MIRROR REFLEX ATTACHMENT

Cat. No. and
Code Word

Price

72,180 ELESS	LEITZ Microscope Model LS with substage c, with three-lens condenser, with centering mount, square, built-on mechanical stage, triple nosepiece, achromatic objectives: 24mm (magnification 3.2X), 13mm (magnification 14X), 4mm (magnification 45X), oculars: huyghens 6X and periplan 10X, in wooden case	
72,182 SPMOO- DOOSL	Large Horseshoe Stand with upright 25 in. high, 1¼ in. diameter, with baseboard	
72,184 GOOZQ	Short Sliding Arm , with tape measure, for attaching to the upright	
72,186 KGOON	Large Ball-Jointed Tripod Head	
72,188 LENOT	LEICA Camera, Standard Model , without lens	
72,190 PLOOT	Mirror Reflex Housing	
72,192 GHEF	Conical Extension Tube with correction lens of ⅓X initial magnification	
72,194 LSZOO	Light-Excluding Ring for making light-tight connection between the microscope and the extension tube	
72,196 BEECH	LEITZ Universal Microscope Lamp MONLA , on adjustable stand with low-voltage lamp, 6-volts 5 amperes with adjustable condenser	
72,198 REDYX	Regulating Transformer for A.C. only, 110/220 volts, with electric cord and plug, for use with lamp No. 72,196	
72,200 IFSTA- DTEEO	Adjustable Stand with Lifa Filter No. 200b, yellow-green	_____
72,202 TREPL	EQUIPMENT NO. 3 COMPLETE	=====

EQUIPMENTS FOR SCIENTIFIC AND INDUSTRIAL PHOTOGRAPHY



Equipment No. 4

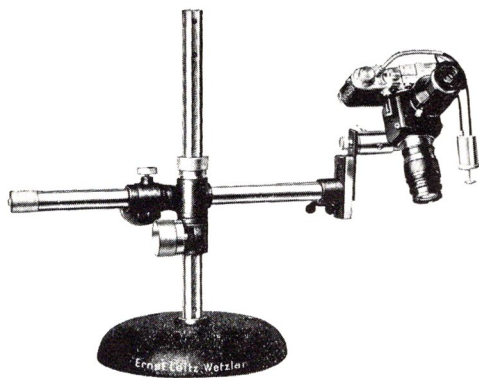
EQUIPMENT No. 4 FOR MEDICAL PHOTOGRAPHY, ESPECIALLY RECOMMENDED FOR OPHTHALMIC AND DENTAL PHOTOGRAPHY

Cat. No. and
Code Word

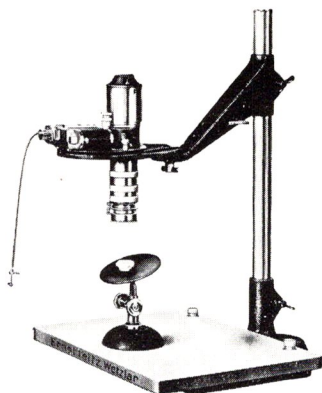
Price

72,220 XADEE	Special Stand consisting of heavy iron base with head rest, adjustable chin and forehead support, special mechanical stand, adjustable on the baseboard, provided with 3 rack and pinion movements permitting vertical adjustment, and right and left and forward and backward movement of the camera in a horizontal direction, joint permitting the camera support and the upper rack and pinion motion to be tilted and to be rotated in any direction, with dove-tailed fitting	
72,222 XBEET	Dove Tail Slider with tripod screw to fit the camera or the mirror reflex housing	
72,224 LENOT	LEICA Camera, Standard Model , without lens	
72,226 PLOOT	Mirror Reflex Housing	
72,228 ELANG	LEITZ Anastigmat Elmar 90mm focus, f:4 , in focusing mount	
72,230 ZROOH	Extension Tubes 7mm, 16mm, 24.5mm, and 41mm	
72,232 BEECH	LEITZ Universal Lamp MONLA on adjustable stand with low-voltage lamp, 6-volts, 5 amperes, adjustable condenser	
72,234 DEEMH	Iris Diaphragm for the Leitz Universal Lamp	
72,236 REDYX	Regulating Transformer for A.C. only, 110/220 volts, with electric cord and plug, for use with lamp No. 72,232	_____
72,238 FOUPL	EQUIPMENT NO. 4 COMPLETE	=====

EQUIPMENTS FOR SCIENTIFIC AND INDUSTRIAL PHOTOGRAPHY



Equipment No. 5



Equipment No. 6

EQUIPMENT No. 5 FOR INDUSTRIAL PHOTOGRAPHY

Cat. No. and
Code Word

Price

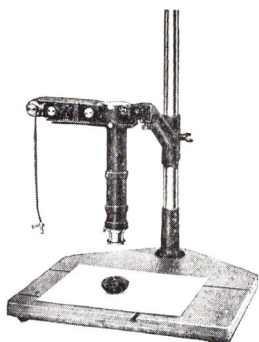
72,260 CMEET- XCEES- XBEE	Special Mechanical Stand US I with heavy iron base insuring extreme rigidity, with vertical and horizontal rods provided with rack and pinion movements, permitting the camera to be moved smoothly and accurately both vertically and horizontally, including removable dove-tailed slider with tripod screw for the camera....	
72,262 LENOT	LEICA Camera, Standard Model , without lens	
72,264 PLOOT	Mirror Reflex Housing	
72,266 ELANG	LEITZ Anastigmat Elmar 90mm focus, f:4 , in focusing mount	
72,268 ZROOH	Extension Tubes 7mm, 16mm, 24.5mm, and 41mm	
72,270 KGOON	Large Ball-Jointed Tripod Head	_____
72,272 FIVPL	EQUIPMENT NO. 5 COMPLETE	=====

EQUIPMENTS FOR SCIENTIFIC AND INDUSTRIAL PHOTOGRAPHY

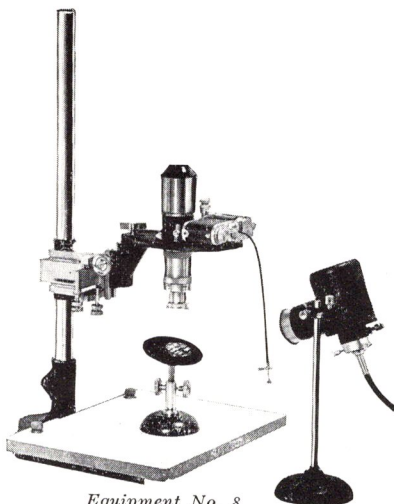
EQUIPMENT No. 6 FOR SCIENTIFIC AND INDUSTRIAL PHOTOGRAPHY

Cat. No. and Code Word		Price
72,290 SPMOO- DOOSL	Large Horseshoe Stand with upright 25 in. high, 1¼ in. diameter, with baseboard	
72,292 GOORM	Sliding Arm for attaching Rotating Focusing Copying Attachment to upright	
72,294 OORES	Rotating Focusing Copying Attachment	
72,296 LVFOO	Large Widefield Magnifier 5X	
72,298 LWHOO	Focusing Magnifier 30X	
72,300 ZWTOO	Intermediate Focusing Mount for the Elmar 50mm lens	
72,302 ZROOH	Extension Tubes 7mm, 16mm, 24.5mm, and 41mm	
72,304 LENOT	LEICA Camera, Standard Model , without lens	
72,306 ELMAR	LEITZ Anastigmat Elmar 50mm focus, f:3.5 , in focusing mount ..	
72,308 ELANG	LEITZ Anastigmat Elmar 90mm focus, f:4 , in focusing mount ..	
72,309 COOED	Special Short Focusing Mount , for ELMAR 90mm lens	
72,310 VALAU	Slip-on Ring , for conveniently operating the iris diaphragm of the ELMAR 50mm lens	
72,311 FINOT	Wire Release with set screw for LEICA Camera	
72,312 HIIBE	Stand For Small Opaque Objects with object stage adjustable in height by rack and pinion motion and which can be rotated and tilted in all directions	
72,314 LUFAS	Object Stage for photographing small objects in transmitted light ..	
72,315 HIIDF	Complete Set of 5 illuminating lenses for Object Stage No. 72,314 ..	
72,316 DEEQK	Illuminating Stand with adjustable 100-watt, 110-volt lamp, adjustable condenser, iris diaphragm daylight filter, and ground glass plate	
72,318 SIXPL	EQUIPMENT NO. 6 COMPLETE	

EQUIPMENTS FOR SCIENTIFIC AND INDUSTRIAL PHOTOGRAPHY



Equipment No. 7



Equipment No. 8

EQUIPMENT No. 7 SIMPLIFIED OUTFIT FOR COPYING WORK

Cat. No. and
Code Word

Price

72,340 FEFFU	Baseboard, 15¼ x 18 in., with metal upright 20 in. (50cm) high. 1¼ in. (30mm) in diameter	
72,342 FULDY	Sliding Focusing Copying Attachment, Model I, with ground glass focusing screen	
72,344 VEARM	Sliding Arm for attaching the copying attachment to the upright	
72,346 LGCOO	Focusing Magnifier 5X	
72,348 LENOT	LEICA Camera, Standard Model, without lens	
72,350 ELMAR	LEITZ Anastigmat Elmar 50mm focus, f:3.5, in focusing mount	
72,352 FUECD	Extension Tubes 1.2cm, 2.2cm, 3cm, 6cm, and 9cm	
72,354 FINOT	Wire Release with set screw for LEICA Camera	_____
72,356 SEVPL	EQUIPMENT NO. 7 COMPLETE	=====

EQUIPMENTS FOR SCIENTIFIC AND INDUSTRIAL PHOTOGRAPHY

EQUIPMENT No. 8 FOR MACROPHOTOGRAPHY (MAGNIFICATIONS ON THE NEGATIVE: 1X — 20X AND MORE)

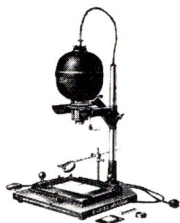
Cat. No. and Code Word		Price
72,380 SPMOO- DOOSL	Large Horseshoe Stand with upright 25 in. high, 1¼ in. diameter, with baseboard	
72,382 XDQH	Sliding Arm for attaching to the upright, with special mechanical stage on ball-bearings, permitting the camera to be moved laterally, longitudinally and vertically for extremely accurate image placement, with bracket for the Rotating Focusing Attachment	
72,384 OORES	Rotating Focusing Copying Attachment	
72,386 LKIOO	Large Widefield Angular Focusing Magnifier 5X	
72,388 LWHOO	Focusing Magnifier 30X	
72,390 ZROOH	Extension Tubes 7mm, 16mm, 24.5mm, and 41mm	
72,392 LENOT	LEICA Camera, Standard Model , without lens	
72,393 FINOT	Wire Release with set screw for LEICA Camera	
72,394 SUMAN	Micro Summar 24mm focus f:4.5 , with iris diaphragm	
72,396 SUMIT	Micro Summar 42mm focus f:4.5 , with iris diaphragm	
72,398 SUMOS	Micro Summar 65mm focus f:4.5 , with iris diaphragm	
72,402 ZWMYY	Helical Focusing Mount , with adapter and thread for Micro Summar 65mm, and adapter ring for Micro Summars 24 and 42mm	
72,406 HIIBE	Stand For Small Opaque Objects , with object stage adjustable in height by rack and pinion motion and which can be rotated and tilted in all directions	
72,408 LUFAS	Object Stage for photographing small objects in transmitted light	
72,410 HIIDF	Complete Set of five illuminating lenses for objectives of various focal length for use with the object stage for transmitted light	
72,412 BEECH	LEITZ Universal Lamp Monla , on adjustable stand with low-voltage lamp, 6-volts 5 amperes, adjustable condenser	
72,413 DEEMH	Iris Diaphragm for the Monla Lamp	
72,414 REDYX	Regulating Transformer for A.C. only, 110/220 volts, with electric cord and plug, for use with lamp No. 72,412	
72,416 EITPL	EQUIPMENT NO. 8 COMPLETE	_____

EQUIPMENTS FOR SCIENTIFIC AND INDUSTRIAL PHOTOGRAPHY

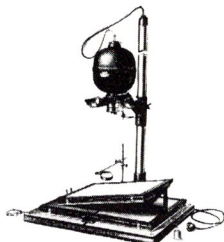
SPECIAL LENSES FOR MACROPHOTOGRAPHY

Cat. No. and Code Word	Price
72,430 SUMAN	Micro Summar 24mm focus, f:4.5, with iris diaphragm
72,432 SUMAX	Micro Summar 35mm focus, f:4.5, with iris diaphragm
72,434 SUMIT	Micro Summar 42mm focus, f:4.5, with iris diaphragm
72,436 SUMOS	Micro Summar 65mm focus, f:4.5, with iris diaphragm
72,438 SUMOR	Micro Summar 80mm focus, f:4.5, with iris diaphragm
72,440 SUMMY	Micro Summar 100mm focus, f:4.5, with iris diaphragm
72,442 SUMZO	Micro Summar 120mm focus, f:4.5, with iris diaphragm
72,444 ZWTOO- HESUM	Intermediate Focusing Mount, with Bayonet lock
	(This should be used with adapter No. 72,446.)
72,446 ZWMQX	Adapter for the Bayonet lock of the focusing mount No. 72,444 with thread accommodating Micro Summar 65mm, and adapter ring for Micro Summars 24mm, 35mm, and 42mm focus
72,448 COOWQ	Focusing Mount with one set of adapter rings for all Micro Summar lenses

ENLARGING APPARATUS



VALOY with Accessories



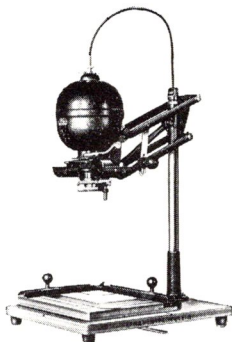
VAMAX with Accessories

Cat. No. and
Code Word

Price

- | | |
|-----------------|---|
| 73,000
VALOY | VALOY Universal Enlarger for single frame, Leica double frame and up to $1\frac{1}{8}$ x $1\frac{1}{8}$ in. (4 x 4cm), with: Baseboard $15\frac{1}{2}$ x $17\frac{1}{2}$ in. (39 x 44cm), upright pillar 32 in. (80cm) high of $1\frac{1}{4}$ in. (3.2cm) diameter, well ventilated lamp housing with 75-watt 110-volt lamp giving fully diffused illumination, novel film guide completely protecting the film, with combination condenser pressure plate for holding negatives in a flat plane, masking negative carrier plate for Leica films, helical screw mount with thread permitting the use of 50mm Leica lenses (except Xenon), with two clamps for easel, but without lens or easel (paper holder) |
| 73,010
VOGOS | VOGOS Enlarger , same as the VALOY, but with horizontally rotating negative carrier, without lens |
| | Note: The Rotating Negative Carrier of the VOGOS Enlarger permits it to be used for reading or projection purposes when used with the accessories listed on page 62. |
| 73,020
FIGLX | Lamp Housing of VALOY Enlarger , with extension arm, cord and plug, 75-watt, 110-volt lamp and metal mask for LEICA negatives, without lens |
| 73,030
VAROB | Special 50mm VAROB Enlarging Lens with iris diaphragm engraved to indicate relative exposure times. Each stop is indicated by a slight click enabling the diaphragm to be correctly set in the dark. For use on all LEICA Enlargers. This lens cannot be used on the Leica Camera |
| 73,040
VEOOM | VAMAX Universal Enlarger , for single frame, Leica double frame and up to $1\frac{1}{8}$ x $1\frac{1}{8}$ in. (4 x 4cm) negatives similar to the VALOY but with a larger baseboard, higher upright and longer supporting arm for lamp housing. Illuminating system and negative carrier same as in the VALOY. Baseboard 25 x 26 in. (62 x 65cm), upright 4 ft. (120cm) high and 2 in. (5cm) in diameter, with helical screw mount with thread permitting the use of 50mm LEICA lenses (except Xenon), with two clamps for easel without lens or easel (paper holder) |
| 73,042
VAMAX | VAMAX Universal Enlarger , same as No. 73,040 but with VAROB Enlarging Lens |
| 73,045
WENOO | Lamp Housing of VAMAX Enlarger with supporting arm, cord and plug 75-watt 110-volt opal lamp and masking negative carrier for LEICA size, without lens |
| 73,060
FYLTO | Orange Filter for VALOY, VAMAX, VOGOS and VOKOM Enlargers, to enable negative to be focused directly on sensitive paper |

ENLARGING APPARATUS



*FOCOMAT I
with Accessories*

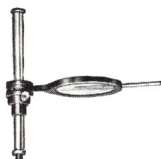
Cat. No. and
Code Word

Price

- | | |
|---------------------------|---|
| 73,100
VIWOO | FOCOMAT Enlarger, Model I , with automatic focusing control which focuses the lens fully automatically at any magnification from 2 to 10 diameters for enlarging single frame, Leica double frame and other miniature negatives up to $1\frac{5}{8} \times 1\frac{3}{8}$ in. (4 x 4cm) in size, with: Baseboard 16 x 21 in. (40 x 51.5cm), upright pillar 32 in. (80cm) high of $1\frac{1}{4}$ in. (3.2cm) diameter, with a novel, quick-action clamp for enlarging easels, well ventilated lamp housing with adjustable lamp base 75-watt 110-volt opal lamp, giving fully diffused illumination, novel film guide completely protecting the film, with combination condenser pressure plate for holding negatives in a flat plane, masking negative carrier plate for Leica films, threaded focusing mount for receiving lens (50mm Leica lenses except Xenon may be used), with adjustable focusing clamps for conveniently setting the focusing mount in the right position with the various masking negative carrier plates, without lens or easel (paper holder) |
| 73,105
VIWOO-
VAROB | Focomat Enlarger , same as No. 73,100, but with 50mm f:3.5 enlarging lens in Special screw-in mount |
| 73,110
VUTOO | FOCOMAT Enlarger , similar to No. 73,100, however, equipped with larger Baseboard 22 x 25.5 in. (55 x 65cm) with upright pillar 4 ft. (120cm) high and 2 in. (5cm) in diameter, without lens or easel (paper holder) |
| 73,115
VUTOO-
VAROB | FOCOMAT Enlarger , same as No. 73,110, but with 50mm. f:3.5 enlarging lens |
| 73,120
VAROB | Special 50mm VAROB Enlarging Lens with iris diaphragm engraved to indicate relative exposure times. Each stop is indicated by a slight click enabling the diaphragm to be correctly set in the dark. For use on all LEICA Enlargers. This lens cannot be used on the Leica Camera |
| 73,130
FYSTY | Orange Filter , for FOCOMAT Enlargers No. 73,100 and 73,110..... |

ENLARGING APPARATUS

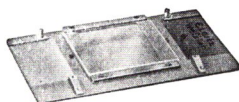
INTERCHANGEABLE ACCESSORIES FOR VALOY, VAMAX,
VOGOS, VOKOM AND FOCOMAT MODEL I ENLARGERS



No. 73,060



No. 73,150



No. 73,172

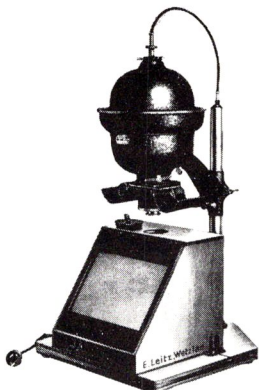
Cat. No. and
Code Word

Price

73,150 VALAU	Slip-on Ring , for operating the iris diaphragm of LEICA ELMAR 50mm lens
73,152 VOOLQ	Slip-on Ring , same as No. 73,150, but for 50mm LEICA HEKTOR lens
73,160 VBOOP	Masking Negative Carrier Plate , without glass, for 1 x 1½ in. (24 x 36mm) negatives, with ruby glass for observation of the negative numbers (as replacement)
73,162 VDOON	Masking Negative Carrier Plate , without glass, for ¾ x 1 in. (18 x 24mm) negatives, with ruby glass for observation of the negative numbers
73,165 VABAN	Masking Negative Carrier , without glass, for 1½ x 1½ in. (28 x 40mm) negatives, with ruby glass for observation of the negative numbers
73,168 VAZEL	Metal Guiding Plate , with double glass negative holder, for single LEICA negatives
73,170 VAVIR	Masking Negative Carrier , for 1½ x 1½ in. (3 x 4cm) negatives, with glass
73,172 VAKES	Masking Negative Carrier Plate , for 1½ x 1½ in. (4 x 4cm) negatives, with glass
73,175 VAZUP	Masking Negative Carrier Plate , for single 1½ x 1½ in. (3 x 4cm) negatives, without glass
73,178 VAZIS	Masking Negative Carrier Plate , for single 1½ x 1½ in. (4 x 4cm) negatives, without glass
73,180 VOONR	Optically Flat Glass Negative Carrier , for enlarging single negatives 1½ x 1½ in. (3 x 4cm) and 1½ x 1½ in. (4 x 4cm) size. To be used with Metal Masking Negative Carrier Plates Nos. 73,175 and 73,178

NOTE: FOR ENLARGING EASELS, SEE PAGE 66.

ENLARGING APPARATUS



No. 73,215



VAROB Lens

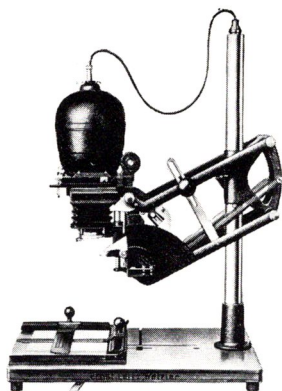
ACCESSORIES FOR THE VOGOS ENLARGER WHEN USED FOR READING OR PROJECTION PURPOSES

**Cat. No. and
Code Word**

Price

- | | |
|-----------------|--|
| 73,200
VOPUL | <p>Reading Desk, consisting of wooden box containing mirror, ground glass screen, and frame mask, for use with VOGOS enlarger, permitting enlarger to be used as a reading machine</p> |
| 73,202
VOMIR | <p>Reflecting Mirror, mounted upon a universal joint for adjusting under lens of VOGOS enlarger to enable the enlarger to be used for projection purposes</p> |
| 73,205
VOLAM | <p>100-Watt, 110-Volt Clear Glass Projection Lamp, for use with the VOGOS enlarger when it is used for reading or projection purposes</p> |
| 73,208
VOBIT | <p>Special Diffusing Condenser, for VALOY, VAMAX, FOCOMAT I, VOGOS or VOKOM enlargers, when using the Projection lamp. Consists of clear glass condenser and removable ground glass disc permitting alteration of contrast in enlarging</p> |
| 73,210
VORYM | <p>Special Ventilating Ring, for use in VOGOS enlarger when using the 100-watt Clear Glass Projection Lamp. (May also be used in all other enlargers when using the Photoflood lamp.)</p> |
| 73,215
VOKOM | <p>Combination Enlarger, Reading Stand, and Projector, consisting of VOGOS enlarger with rotating negative carrier, masking negative carrier plate for LEICA negatives, 32 in. (80cm) upright pillar of 1¼ in. (3.2cm) diameter, baseboard 15½ x 17½ in. (39 x 44cm) 75-watt, 110-volt Nitra Opal enlarging lamp, 100-watt, 110-volt clear glass projection bulb, special ventilating ring, special diffusing condenser, special reflecting mirror with universal joint for adjusting under lens of the enlarger for projection purposes, and reading desk containing mirror and inclined ground glass screen, without lens or enlarging easel</p> |

ENLARGING APPARATUS



FOCOMAT IIa with Easel

Cat. No. and
Code Word

Price

73,300
VOOWI

FOCOMAT Enlarger, Model IIa, fully automatically focusing, with double automatic focusing control for two focal lengths, for enlarging single frame, Leica double frame and other negatives up to $2\frac{1}{2} \times 3\frac{1}{2}$ in. (6.5 x 9cm) in size; with 95mm f:4 enlarging lens which can be interchanged with a special VAROB 50mm enlarging lens (not included in this outfit) or any of the 50mm Leica lenses (except XENON). The 95mm lens is to be used for larger negatives while the 50mm lenses are suggested when enlarging Leica negatives because of the more favorable working distance. The automatic focusing control fully automatically focuses the 95mm enlarging lens at any magnification from $1\frac{1}{3}$ up to $4\frac{3}{4}X$ or the 50mm lens at any magnification from 2 up to 13X. Through adjustment by hand a magnification up to 9X is obtainable for the 95mm lens and up to 18X for the 50mm lens; well-ventilated lamp housing with 75-watt 110-volt opal lamp, double condenser giving fully diffused illumination, novel film guide greatly simplifying the operation and very completely protecting the film from being scratched or otherwise damaged, assuring at the same time a specially rapid change from one negative to another when working with uncut film strips without the necessity of removing the film from the apparatus. The film ends projecting from either side lie in film troughs and are thus safe against accidental damage. Baseboard 21 x 26 in. (52 x 64.5cm) upright 33 in. (82cm) high and 2 in. (5cm) in diameter, with masking negative carrier plates for Leica size 1 x $1\frac{1}{2}$ in. and $2\frac{1}{2} \times 3\frac{1}{2}$ in. (6.5 x 9cm), **without easel**

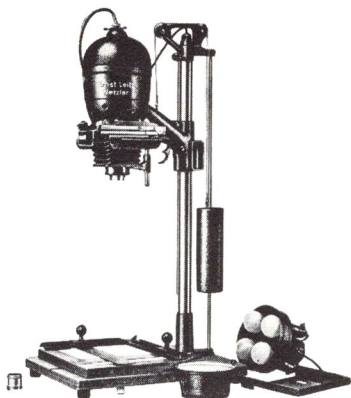
73,310
VOOWI-
VAROB

FOCOMAT Enlarger, Model IIa, same as No. 73,300, but with 95mm and 50mm Enlarging Lenses

73,320
FYOON

Orange Filter for FOCOMAT Model IIa, Enlarger

ENLARGING APPARATUS



VASEX I with Accessories and No. 73,440

Cat. No. and
Code Word

Price

73,350
VYBOO

VASEX Model I Enlarger, for enlarging single frame, Leica double frame and other negatives up to $2\frac{1}{2} \times 3\frac{1}{2}$ in. (6.5 x 9cm) in size, with helical screw mount with thread for interchanging lenses, 95mm f:4 enlarging lens which can be interchanged with a special VAROB 50mm enlarging lens (not included with this outfit) or any of the 50mm Leica lenses (except XENON). The 95mm lens is to be used for larger negatives while the 50mm lenses are suggested when enlarging Leica negatives because of the more favorable working distance. Possible magnification: Up to 6.8X with 95mm lens and up to 13X with a 50mm lens. Well-ventilated lamp housing counterbalanced by means of a weight facilitating easy and smooth adjustment in height, with 75-watt 110-volt opal lamp, double condenser giving fully diffused illumination, novel film guide greatly simplifying the operation and very completely protecting the film from being scratched or otherwise damaged, assuring at the same time a specially rapid change from one negative to another when working with uncut film strips without the necessity of removing the film from the apparatus. Baseboard 16 x 20 in. (39 x 50cm), upright 34 in. (86cm) high and $1\frac{1}{2}$ in. (4cm) in diameter, with masking negative carrier plates for Leica size (1 x $1\frac{1}{2}$ in.) and $2\frac{1}{2} \times 3\frac{1}{2}$ in. (6.5 x 9cm) **without easel** (paper holder)

73,360
VYOOS

VASEX Model II Enlarger—large model—similar to No. 73,350, however, equipped with baseboard 25 x 27 in. (62 x 68cm) and metal upright pillar 48 in. (120cm) high of 2 in. (50mm) diameter, and longer carrying arm for lamp housing, possible magnification up to 11.5X with 95mm lens and up to 23.5X with 50mm lens, with 95mm f:4 enlarging lens **without easel**

73,380
FYLOR

Orange Filter, in swing-in mount for use on the VASEX Models I and II Enlargers

ENLARGING APPARATUS

INTERCHANGEABLE ACCESSORIES FOR FOCOMAT MODEL IIa AND VASEX MODELS I AND II ENLARGERS

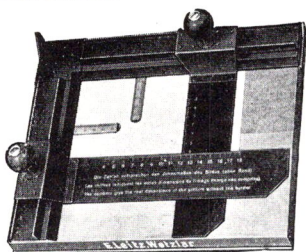
Cat. No. and
Code Word

Price

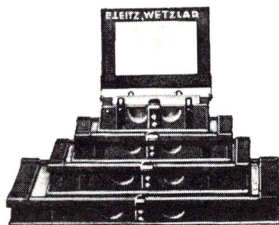
73,400 VAROB	Special 50mm VAROB Enlarging Lens with iris diaphragm engraved to indicate relative exposure times. Each stop is indicated by a slight click enabling the diaphragm to be correctly set in the dark. For use on all LEICA Enlargers. This lens cannot be used on the Leica Camera
73,402 VOORT	Enlarging Lens ELMAR 95mm f:4 (This is the lens included with FOCOMAT Model IIa and VASEX Models I and II Enlargers) ..
73,405 CBOOD	Metal Masking Plate , for enlarging single frame negative size $\frac{3}{4}$ x 1 in. (18 x 24mm)
73,408 CDEOO	Metal Masking Plate , for enlarging LEICA negative size 1 x $1\frac{1}{2}$ in. (24 x 36mm)
73,410 CDOOB	Metal Masking Plate , for enlarging negative size $1\frac{3}{8}$ x $1\frac{1}{8}$ in. (3 x 4cm)
73,412 CFIOO	Metal Masking Plate , for enlarging negative size $1\frac{5}{8}$ x $1\frac{1}{8}$ in. (4 x 4cm)
73,415 CFOOZ	Metal Masking Plate , for enlarging negative size $1\frac{5}{8}$ x $2\frac{1}{2}$ in. (4 x 6.5cm)
73,418 CGLOO	Metal Masking Plate , for enlarging negative size $1\frac{3}{4}$ x $2\frac{1}{4}$ in. (4.5 x 6cm)
73,420 CGOOY	Metal Masking Plate , for enlarging negative size $2\frac{1}{4}$ x $2\frac{1}{4}$ in. (6 x 6cm)
73,421 CHOOX	Metal Masking Plate , for enlarging negative size $2\frac{1}{4}$ x $3\frac{1}{2}$ in. (6 x 9 cm)
73,422 CHNOO	Metal Masking Plate , for enlarging negative size $2\frac{1}{2}$ x $3\frac{1}{2}$ in. (6.5 x 9cm)
73,425 GLOOC	Hinged Double Glass Plate , 4 x $8\frac{5}{8}$ in. (10 x 22cm), accommodating single film and plate negatives up to $2\frac{1}{2}$ x $3\frac{1}{2}$ in. (6.5 x 9cm) ..
73,428 GLASI	Hinged Double Glass Plate , $1\frac{3}{8}$ x $6\frac{5}{8}$ in. (3.5 x 17cm) for short Leica film strips or single Leica negatives
73,440 VADIV	Additional Illuminating Arrangement for Fully Diffused Light , consisting of: Upper lamp hemisphere with 4 screw sockets with switch , for standard 60-watt filament bulbs, without bulbs (which are obtainable separately), also special attachment with ground and opal glass discs and light guard for retaining the stray light coming from the sides of the film stage

ENLARGING APPARATUS

ENLARGER EASELS



No. 73,600



Nos. 73,635/73,638, 73,642
and 73,645

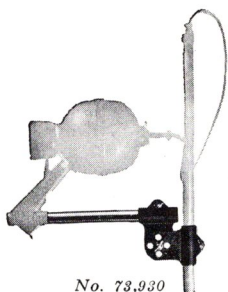
NOTE: THE FOCOMAT AND VASEX ENLARGERS ARE PROVIDED WITH BASEBOARDS WHICH HAVE THE NEW "QUICK-ACTION" CLAMP WHICH ACCOMMODATES THE ENLARGING EASELS NOS. 73,605, 73,615, 73,625, 73,632 AND 73,665. BY MEANS OF A SINGLE MOVEMENT OF A METAL LEVER, THE EASEL IS EITHER FASTENED SECURELY OR LOOSENED FOR MOVING AND ADJUSTING ON THE BASEBOARD. THIS CONVENIENCE WILL BE ESPECIALLY WELCOMED BY COMMERCIAL FINISHERS AND THOSE WHO HAVE CONSIDERABLE ENLARGING TO DO WHERE VARIOUS SIZES AND AREAS OF PRINTS ARE WANTED. THIS NEW CLAMPING DEVICE DOES NOT PREVENT THE USE OF ANY OTHER TYPE OF ENLARGING EASEL.

Cat. No. and
Code Word

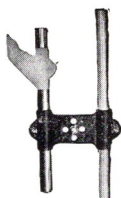
Price

73,600 FELIS	Enlarging Easel, with adjustable metal masking bands, for paper sizes up to 8 x 10 in. maximum picture area 6½ x 8½ in., for VALOY, VOGOS, VOKOM and VAMAX Enlargers
73,605 FYROO	Enlarging Easel, with adjustable metal masking bands, for paper sizes up to 8 x 10 in., with grooves at lower surface for attaching to the quick-action baseboard clamp of FOCOMAT and VASEX Enlargers, maximum picture area 6½ x 8½ in.
73,610 FELUK	Enlarging Easel, with adjustable metal masking bands, for paper sizes up to 11 x 14 in., maximum picture area 9 x 11 in. for VALOY, VOGOS, VOKOM and VAMAX Enlargers
73,615 FPYOO	Enlarging Easel, with adjustable metal masking bands, for paper sizes up to 11 x 14 in., maximum picture area 9 x 11 in. with grooves at lower surface for attaching to the quick-action baseboard clamp of FOCOMAT and VASEX Enlargers
73,620 FSOOT	Enlarging Easel, with adjustable metal masking bands, for paper sizes up to 16 x 20 in. maximum picture area 13 x 17 in. for VAMAX Enlargers
73,625 FUOOR	Enlarging Easel, with adjustable metal masking bands, for paper sizes up to 16 x 20 in. maximum pictures area 13 x 17 in. with grooves at lower surface for attaching to the quick-action baseboard clamp of large models FOCOMAT and VASEX Enlargers....
73,632 COOPI	Enlarging Easel, fixed paper size, with sliding groove for paper, opening size 2¼ x 3¼ inches. This easel is designed for use with enlarging paper in roll form, it being fed in at one end and removed from the other. It has a groove on its base for use with the quick-action clamp of the FOCOMAT and VASEX enlargers ..

ENLARGING APPARATUS



*No. 73,930
with Enlarger
Head attached*



No. 73,930



No. 73,775

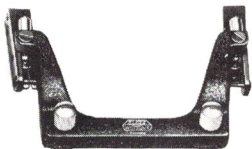
**Cat. No. and
Code Word**

Price

73,635 VETWO	Enlarging Easel , fixed size 2½ x 3½ in. with hinged metal frame for holding paper and producing a white margin, for VALOY, VOGOS, VOKOM and VAMAX Enlargers
73,638 VEFOR	Enlarging Easel , similar to No. 73,635, but for fixed size 3¼ x 4¼ in.
73,640 VELAN	Enlarging Easel , similar to No. 73,635, but for fixed size 3¼ x 5½ in.
73,642 VESIR	Enlarging Easel , similar to No. 73,635, but for fixed size 5 x 7 in.
73,645 VETIN	Enlarging Easel , similar to No. 73,635, but for fixed size 8 x 10 in.
73,648 VEBOL	Enlarging Easel , similar to No. 73,635, but for fixed size 11 x 14 in.
73,650 VEGUR	Enlarging Easel , similar to No. 73,635, but for fixed size 16 x 20 in., with two clamping screws for attaching smaller easel on top of it
73,652 FETRA	Enlarging Easel , for sizes up to 8 x 10 in. with glass plate for holding paper flat, without masking bands
	NOTE: THE EASELS NOS. 73,635 TO 73,652 HAVE BEEN DESIGNED FOR USE ON THE BASEBOARD OF THE VALOY, VOGOS, VOKOM AND VAMAX ENLARGERS AND DO NOT HAVE THE GROOVES FOR USE WITH THE QUICK-ACTION CLAMP OF THE VASEX AND FOCOMAT ENLARGERS. FOR THE LATTER THE TWO CLAMPS. (Cat. No. 73,660 at \$1.80) SHOULD BE ORDERED.
73,660 KLMOO	Set of Two Clamps , for baseboard of VALOY, VOGOS, VOKOM and VAMAX Enlargers, which serve for attaching easel (for replacement)
73,665 VEBYX	Enlarging Easel , fixed size 11 x 14 in. with hinged metal frame for holding paper and producing a white margin with grooves for quick-action baseboard clamp for FOCOMAT and VASEX enlargers

ENLARGING APPARATUS

DISTORTION ELIMINATING DEVICES



No. 73,680



No. 73,685

If the camera — for the purpose of getting on to the negative the whole of a tall building — has been tilted, the vertical lines converge. This appearance gives the impression that the object is falling forward or backwards and it is more pronounced, the more inclined the camera is held and the larger the angle of field of the lens. It is therefore particularly pronounced with the wide-angle photographs and most marked when using the Leitz Hektor 28mm lens. In order to erect these falling lines, the enlarging easel has to be tilted and the lens stopped down until the image is sharp over its whole area. If the easel has to be tilted very much, the depth of focus may not be sufficient no matter how much the lens is stopped down and the upper or lower edge of the enlargement will always remain unsharp. For this purpose a new correcting device has been designed by which the negative itself can be inclined. It consists of a frame which is used in place of the film holder, with the condenser lens in the uppermost position. **It will fit the enlargers Valoy, Vogos, Vamax and Focomat I.** The negative, held between hinged glass plates, is placed into this frame and then tilted in an opposite manner to the inclination of the enlarging easel until the whole image at full aperture appears evenly sharp. The spring which holds the hinged glass plates in the frame can be displaced vertically and can also be swung. To tilt the enlarging easel the metal bracket with step arrangement No. 73,682 can be used. For more acute angles of inclination the use of Auxiliary Baseboards with ball jointed head, Nos. 73,685 and 73,688 is considered more convenient. These are fitted in place of the easel on the baseboard of the enlarger. The easel is in turn attached to the ball jointed tripod head.

Cat. No. and
Code Word

73,680 ZRIIOO- VOOND	Distortion Eliminating Device , for VALOY, VOGOS, VAMAX or FOCOMAT Model I Enlargers, enabling the negative to be tilted in the enlarger, including hinged double glass plate for holding the negative in this device
73,682 VEKIP	Metal Bracket , with step arrangement, for holding enlarging easel in tilted position to overcome distortion in negative
73,685 GOOBR	Auxiliary Baseboard , with ball-jointed head, for tilting enlarging easels to eliminate distortion, suitable for use with VALOY, VOGOS, VAMAX and VOKOM Enlargers
73,688 GOOFT	Auxiliary Baseboard , same as No. 73,685, however, for use with FOCOMAT and VASEX Enlargers
73,690 YOOBN	Threaded Flange , for attaching to enlarging easels by means of which the easels can be mounted on the ball-jointed head of baseboard No. 73,685

Price

ENLARGING APPARATUS

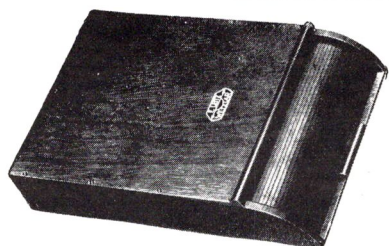
SPARE LAMPS AND ACCESSORIES FOR USING PHOTOFLOOD LAMPS

Cat. No. and Code Word	Price
73,750 FILIF	Enlarging Lamp (NITRA OPAL) 60-watt, 110-volt, for use in the former FILOY Enlarger
73,755 FLABU	Enlarging Lamp (G. E. OPAL) 75-watt, 110-volt, for all LEICA Enlargers
73,760 WONDR	Wonderlite 5 Hour Opal Flood Lamp
73,765 RHEOS	Photoflood Rheostat Control , for controlling illumination in enlarger when using Photoflood lamp; dial calibrated from "0" to "100" giving percentage of brilliancy. Operates on either A.C. or D.C. 110-volt current
<p>Ordinary non-opal photoflood lamps and clear glass projection bulbs can only be used in connection with a special diffusing condenser No. 73,770 in the VALOY, VOGOS, VOKOM, VAMAX and FOCOMAT I Enlargers. This condenser is placed inside of the Illuminating Head on top of the regular illuminating condenser. With Enlargers FOCOMAT IIa, VASEX I and VASEX II the ground glass disc No. 73,772 is employed. The Ventilating Ring No. 73,775 is also needed between the upper and lower hemisphere of the lamp housing.</p>	
73,770 VOBIT	Special Diffusing Condenser , for VALOY, VAMAX, VOGOS, VOKOM and FOCOMAT I enlargers when using non-opal Photoflood or projection lamps; consisting of clear glass condenser and removable ground glass disc permitting control of contrast in enlarging
73,772 MTOOE	Ground Glass Disc , for use with enlargers FOCOMAT Model IIa and VASEX Models I and II when employing Photoflood bulbs ..
73,775 VORYM	Special Ventilating Ring , for use with all enlargers when employing Photoflood or projection bulbs

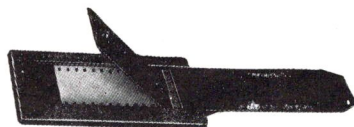
SPECIAL ACCESSORIES FOR ENLARGERS

73,800 VAROB	Special 50mm VAROB Enlarging Lens with iris diaphragm engraved to indicate relative exposure times. Each stop is indicated by a slight click enabling the diaphragm to be correctly set in the dark. For use on all LEICA Enlargers. This lens cannot be used on the Leica camera
73,810 VOOMD	Hinged Double Glass Negative Carrier , 1¾ x 4¾ in. (3.5 x 12cm), for holding LEICA negatives in VALOY, VOGOS, VAMAX, VOKOM and FOCOMAT Model I Enlargers and the former FILOY Enlarger
73,820 GLASI	Hinged Double Glass Negative Carrier , similar to No. 73,810, but 1¾ x 6½ in. (3.5 x 17cm) for use in FOCOMAT IIa, VASEX I and VASEX II enlargers
73,830 GLOOC	Hinged Double Glass Negative Carrier , 4 x 8-4/5 in. (10 x 22 cm) for accommodating negatives up to 1¾ x 2¼ in. (4½ x 6cm).....
73,840 OLDER	Enlarger Film Holder , for making copies with the enlarger; accommodates a piece of 35mm film for making a single exposure with the VALOY, VAMAX, VOGOS, VOKOM or FOCOMAT Model I Enlarger

ENLARGING APPARATUS



No. 73,860



No. 73,840

Cat. No. and Code Word	Description	Price
73,850 CARIR	Color Slide Carrier , for accommodating a bound (2 x 2 in.) color transparency in the VALOY, VOGOS, VAMAX, VOKOM or FOCOMAT Model I Enlargers for making color separation negatives, or single negatives for black and white prints from color transparencies	
73,860 PBAAG	Enlarging Paper Box , for storing enlarging paper; has a light-tight spring lid which closes automatically, preventing accidental spoilage of enlarging paper. For paper up to 8 x 10 in.	
73,863 PBEEB	Enlarging Paper Box , for storing enlarging paper, similar to No. 73,860 but for paper up to 11 x 14 in.	
73,870 NAHNE	Focusing Magnifier of 2¼ in. (54mm) diameter, for sharp focusing, with handle	
73,880 VULPE	Focusing Magnifier of 2¼ in. (54mm) diameter, with socket joint and adjustable arm, for attachment to baseboard of the VALOY, VOGOS, VOKOM and VASEX I Enlargers	
73,890 VULVI	Focusing Magnifier similar to No. 73,880 but with a longer arm, for use with VAMAX and VASEX II Enlargers	
73,910 VERUP	Metal Upright Pillar for VALOY Enlarger, 32 in. (80cm) long, 1¼ in. (32mm) diameter	
73,915 CENTO	Metal Upright Pillar for VALOY Enlarger, 40 in. (100cm) long, 1¼ in. (32mm) diameter	
73,920 VGSOO	Adapting Arm , permitting accessories for the 1¼ in. (32mm) diameter enlarger upright pillars to be used with the 2 in. (50mm) diameter upright pillars, including upright pillar 14 in. (35.5cm) high 1¼ in. (32mm) diameters	
73,925 VERBE	Baseboard for VALOY Enlarger	
73,930 OFSET	Adjustable Offset Arm , for VALOY, VOGOS, VOKOM, FOCOMAT I and the former FILOY Enlargers	
73,935 VECOF	Special Lamp Housing for the VAMAX Enlarger, for enlarging negatives up to 2½ x 3½ in. (6.5 x 9cm) in size, similar in design to the lamp housing of VASEX Enlarger but with special supporting arm to fit the VAMAX, without counter weight, including 95mm f:4 enlarging lens	

PROJECTION APPARATUS

PROJECTOR MODEL VIII-c (GNOME II)



No. 75,010

- Size: 6¼ in. long (without lens), 6¼ in. high, 3 in. wide
- Weight: 3½ lbs. (without lens)
- 100-watt, 110-volt black top projection lamp
- Highly efficient glass reflector
- Heat Absorption Filter
- Open top, non-light-leaking metal lamp housing, providing efficient ventilation
- Base and Front made of bakelite
- Rotating front
- Interchangeable Three-Lens Condenser System, varying according to projection lens used

Cat. No. and Code Word

Price

75,000 SMUUY	Projector Model VIII-c (GNOME II) , with removable slide changer for 2 x 2 in. (50 x 50mm) LEICA glass slides, without lens <i>Specify Type and Focal Length of Lens to be used so that proper Condenser may be supplied.</i>
75,010 SIUB- GLAS	Projector Model VIII-c (GNOME II) , with removable slide changer for 2 x 2 in. (50 x 50mm) LEICA glass slides with projection lens HEKTOR 85mm f:2.5 for projection distances of 10 to 20 ft.
75,018 SOUW- GLAS	Projector Model VIII-c (GNOME II) , with removable slide changer for 2 x 2 in. (50 x 50mm) LEICA glass slides with projection lens HEKTOR 100mm f:2.5 for projection distances of 13 to 24 ft. ...
75,022 SPUUV	Projector Model VIII-c (GNOME II) , with removable film attachment for LEICA positive film strips, without lens <i>Specify Type and Focal Length of Lens to be used so that proper Condenser may be supplied.</i>
75,025 SIUB	Projector Model VIII-c (GNOME II) , with removable film attachment for LEICA positive film strips, with projection lens HEKTOR 85mm f:2.5 for projection distances of 10 to 20 ft.
75,030 SOUW	Projector Model VIII-c (GNOME II) , with removable film attachment for LEICA positive film strips, with projection lens HEKTOR 100mm f:2.5 for projection distances of 13 to 24 ft.

PROJECTOR VIII-c "SIMPLIFIED MODEL"

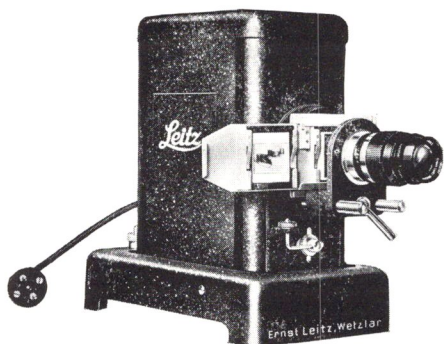
75,038 SNEEX	Projector VIII-c "SIMPLIFIED MODEL," with two-lens condenser system, without reflector and without heat absorption filter, with 100-watt, 110-volt projection lamp, with slide changer for 2 x 2 in. (50 x 50mm) LEICA glass slides, and with non-interchangeable projection lens DIMENAR 85mm f:4.8
-----------------	---

PROJECTION APPARATUS

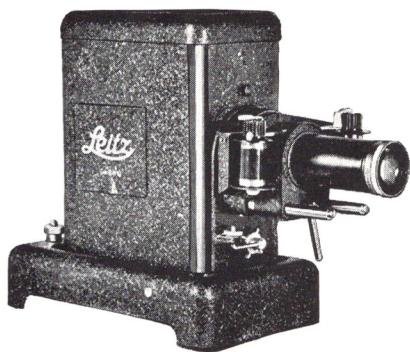
ACCESSORIES FOR PROJECTOR VIII-c (Gnome II)

Cat. No. and Code Word		Price
75,040 BEUUY- IZUUS	Projection Lens EPIS f:3.6, 80mm focus, with focusing mount ..	
75,041 TIYUU	Projection Lens HEKTOR f:2.5, 85mm focus, with focusing mount	
75,042 TKUUC	Projection Lens HEKTOR f:2.5, 100mm focus, with focusing mount	
75,044 SKBUU	Interchangeable Three-Lens Condenser System No. I for all lenses with a focal length from 73 to 100mm <i>The Lens next to the Objective of Condenser System No. 1 is interchangeable.</i>	
75,045 SGVUU	Condenser Lens which is next to the objective in condenser system No. I	
75,046 SNHUU	Interchangeable Three-Lens Condenser System No. II for LEICA lenses SUMMAR and HEKTOR 50mm <i>This Condenser System differs from Condenser System No. 1 only by the Lens next to the Objective. This Lens is Interchangeable.</i>	
75,047 SMFUU	Condenser Lens which is next to the objective in condenser system No. II	
75,048 SLDUU	Interchangeable Three-Lens Condenser System for use with LEICA lens ELMAR 50mm <i>The Lenses in this Condenser System are not Interchangeable.</i>	
75,050 SCNUU	Slide Changer for 2 x 2 in. (50 x 50mm) LEICA glass slides	
75,052 SBUUI	Film Attachment for LEICA positive film strips	
75,055 SUUAW	Mask for single frame size $\frac{3}{4}$ x 1 in. (18 x 24mm) for film attachment	
75,058 SDUUG	Simplified Sliding Gate for 2 x 2 in. (50 x 50mm) LEICA glass slides	
75,060 SPMUU	Front Elevator Attachment	
75,065 SFUUE	Carrying Case	
75,070 SGUUD	Spare Lamp, 100-watt, 110-volt, with blackened top	
75,075 UMERN	Easel Desk Projection Screen, 16 x 16 in. with washable screen surface and cover	
75,076 UMLED	Soft Leather Case, for Projection Screen No. 75,075	
75,080 SHUUC	Viewing Apparatus for VIII-c Projector, consisting of box-shaped base upon which the projector is placed with diagonally arranged projection surface 10 x 10 in. in size, including surface-silvered mirror, for use as a reading desk or as a viewer for negatives....	

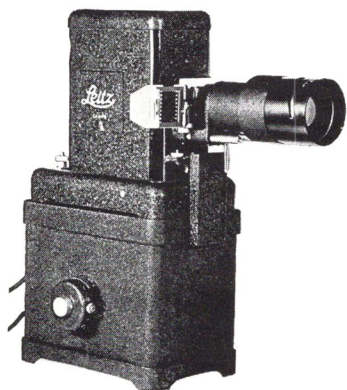
PROJECTION APPARATUS



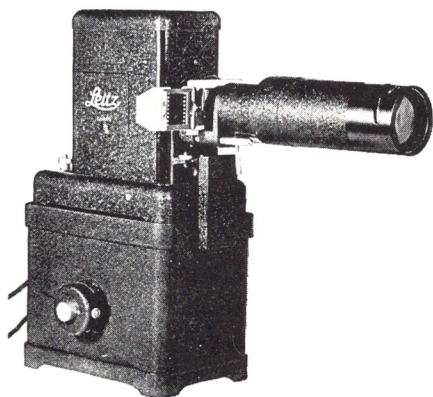
*Projector VIII-s—250
with Slide Changer
and LEICA Lens*



*Projector VIII-s—400
with Film Attachment
and 85mm Lens*



*Projector VIII-s—750
with Slide Changer
and 200mm Lens*



*Projector VIII-s—1000
with Slide Changer
and 250mm Lens*

PROJECTION APPARATUS

PROJECTORS VIII-s—250

- Size: 13 in. long (without lens), 10% in. high and 6¼ in. wide with 250-watt, 110-volt projection lamp
- Well-ventilated, easily detachable lamp-housing
- Removable inner lamp-housing with reflector
- Two internal removable hard glass condenser lenses Nos. 1 and 2
- Heat absorption filter
- Window shutter permitting reading or making notes in darkened auditorium during projection
- Built-in tilting device enabling the projected image to be moved up or down
- Revolving front permitting the projection of vertical or horizontal film strips
- External device for correctly centering the lamp
- Carrier for the glass slide and film gates horizontally adjustable insuring maximum illumination
- External interchangeable condenser, varying according to the type of lens used in the projector.

Cat. No. and
Code Word

Price

75,200 TUUDY	Projector Model VIII-s—250, without slide changer, without film attachment and without lens	
75,205 TUUOD	Removable Slide Changer, for 2 x 2 in. (50 x 50mm) LEICA glass slides	
75,210 TUUIO	Projector Model VIII-s—250, with removable slide changer, without lens	
	<i>Specify Type and Focal Length of Lens to be used so that proper Condenser may be supplied.</i>	
75,215 TUURS	Projector Model VIII-s—250, with removable slide changer and with projection lens HEKTOR f:2.5, 85mm focus, for screen distances 10 to 40 ft.	
75,220 TUUPR	Projector Model VIII-s—250, with removable slide changer and with projection lens EPIS f:3.6, 80mm focus for screen distances 10 to 33 ft.	
75,225 TEQUU- GLAS	Projector Model VIII-s—250, with removable slide changer and with projection lens HEKTOR f:2.5, 100mm focus for screen distances 13 to 46 ft.	
75,230 TUUQE	Projector Model VIII-s—250, with removable slide changer and with projection lens DIMAX f:4.5, 120mm focus for screen distances 16 to 50 ft.	
75,235 TUULP- GLAS	Projector Model VIII-s—250, with removable slide changer and with projection lens DIMAR f:3.5, 150mm focus for screen distances 20 to 66 ft.	
75,240 TUUMC- GLAS	Projector Model VIII-s—250, with removable slide changer, with projection lens DIMAR f:4, 200mm focus and supporting bracket for the projector for screen distances 30 to 70 ft.	
75,245 TUUVE- GLAS	Projector Model VIII-s—250, with removable slide changer, with projection lens DIMAR f:4, 250mm focus and supporting bracket for the projector for screen distances 33 to 75 ft.	
75,250 TUUEM	Removable Film Attachment for LEICA Positive Film Strips	

PROJECTION APPARATUS

PROJECTORS MODEL VIII-s—400

- Size: 13 in. long (without lens), 10 $\frac{1}{2}$ in. high and 6 $\frac{1}{4}$ in. wide
- 400-watt, 110-volt projection lamp
- Well-ventilated, easily detachable, double walled lamp-housing
- Removable inner lamp-housing with reflector
- Two internal removable hard glass condenser lenses Nos. 1 and 2
- Heat absorption filter
- Window shutter permitting reading or making notes in darkened auditorium during projection
- Built-in tilting device enabling the projected image to be moved up or down
- Revolving front permitting the projection of vertical or horizontal film strips
- External device for correctly centering the lamp
- Carrier for the glass slide and film gates horizontally adjustable insuring maximum illumination
- External interchangeable condenser, varying according to the type of lens used in the projector

Cat. No. and
Code Word

Price

75,300 VOGGM	Projector Model VIII-s—400, without slide changer and without film attachment and without lens	
75,305 TUUOD	Removable Slide Changer, for 2 x 2 in. (50 x 50mm) LEICA glass slides	
75,310 VODDA	Projector Model VIII-s—400, with slide changer, without lens <i>Specify Type and Focal Length of Lens to be used so that proper Condenser may be supplied.</i>	=====
75,315 VOEEB	Projector Model VIII-s—400, with slide changer and with projection lens HEKTOR f:2.5, 85mm focus, for screen distances 10 to 40 ft.	
75,320 VOFFC	Projector Model VIII-s—400, with slide changer and with projection lens EPIS f:3.6, 80mm focus, for screen distances 10 to 36 ft.	
75,325 VOHHD	Projector Model VIII-s—400, with slide changer and with projection lens HEKTOR f:2.5, 100mm focus, for screen distances 13 to 46 ft.	
75,330 VOJJE	Projector Model VIII-s—400, with slide changer and with projection lens DIMAX f:4.5, 120mm focus, for screen distances 16 to 54 ft.	
75,335 VOKKF	Projector Model VIII-s—400, with slide changer and with projection lens DIMAR f:3.5, 150mm focus for screen distances 20 to 70 ft. ..	
75,340 VOLLG	Projector Model VIII-s—400, with slide changer and with projection lens DIMAR f:4, 200mm focus, and supporting bracket for the projector, for screen distances 30 to 73 ft.	
75,345 VOMMH	Projector Model VIII-s—400, with slide changer and with projection lens DIMAR f:4, 250mm focus, and supporting bracket for the projector, for screen distances 33 to 78 ft.	
75,350 VONNI	Projector Model VIII-s—400, with slide changer and with projection lens EPNOR f:4.3, 300mm focus, and supporting bracket for the projector, for screen distances 50 to 110 ft.	
75,365 TUUEM	Removable Film Attachment for LEICA Positive Film Strips	

PROJECTION APPARATUS

PROJECTORS MODEL VIII-s—750

- Size: 14 in. long (without lens) 18 $\frac{3}{8}$ in. high (including ventilating unit), 8 $\frac{1}{4}$ in. wide
- 750-watt, 110-volt projection lamp
- Base with ventilating unit with blower of highest efficiency cooling both the lamp-housing and the slide. Universal motor for A.C. and D.C., 110-volts
- Well-ventilated, easily detachable lamp-housing
- Removable inner lamp-housing with reflector
- Two internal removable hard glass condenser lenses Nos. 1 and 2
- Two heat absorption filters
- Window shutter permitting reading or making notes in darkened auditorium during projection
- Built-in tilting device enabling the projected image to be moved up or down
- Revolving front permitting the projection of vertical or horizontal film strips
- External device for correctly centering the lamp
- Carrier for the glass slide and film gates horizontally adjustable insuring maximum illumination
- External interchangeable condenser, varying according to the type of lens used in the projector

Cat. No. and
Code Word

Price

75,400 MFSSU	Projector Model VIII-s—750, without slide changer, without film attachment and without lens	
75,405 TUUOD	Removable Slide Changer for 2 x 2 in. (50 x 50mm) LEICA glass slides	
75,410 MFUUS- UMEXU	Projector Model VIII-s—750, with slide changer, without lens <i>Specify Type and Focal Length of Lens to be used so that proper Condenser may be supplied.</i>	
75,415 MFSVT	Projector Model VIII-s—750, with slide changer and with projection lens HEKTOR f:2.5, 85mm focus, for screen distances 20 to 50 ft.	
75,420 MEUUR	Projector Model VIII-s—750, with slide changer and with projection lens HEKTOR f:2.5, 100mm focus, for screen distances 13 to 50 ft.	
75,425 MFXXU	Projector Model VIII-s—750, with slide changer and with projection lens DIMAX f:4.5, 120mm focus, for screen distances 16 to 60 ft.	
75,430 MNUUL	Projector Model VIII-s—750, with slide changer and with projection lens DIMAR f:3.5, 150mm focus, for screen distances 20 to 72 ft.	
75,435 MLUUN	Projector Model VIII-s—750, with slide changer and with projection lens DIMAR f:4, 200mm focus, and supporting bracket for the projector, for screen distances 30 to 78 ft.	
75,440 MONUU	Projector Model VIII-s—750, with slide changer and with projection lens DIMAR f:4, 250mm focus, and supporting bracket for the projector, for screen distances 33 to 82 ft.	
75,445 EPNUU	Projector Model VIII-s—750, with slide changer and with projection lens EPNOR f:4.3, 300mm focus, and supporting bracket for the projector, for screen distances 50 to 120 ft.	
75,460 TUUEM	Removable Film Attachment, for LEICA Positive Film Strips	

PROJECTION APPARATUS

PROJECTORS MODEL VIII-s—1000

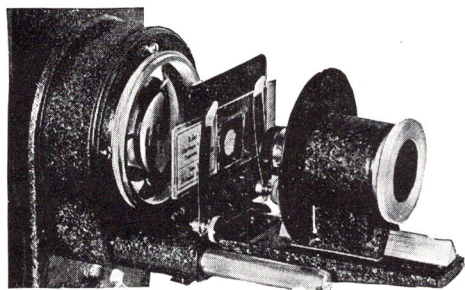
- Size: 14 in. long (without lens) 18 $\frac{1}{2}$ in. high (including ventilating unit) 8 $\frac{1}{4}$ in. wide
- 1000-watt, 110-volt projection lamp
- Base with ventilating unit with blower of highest efficiency, cooling both the lamp-housing and the slide. Universal motor for A.C. and D.C., 110-volts
- Well-ventilated, easily detachable lamp-housing
- Removable inner lamp-housing with reflector
- Two internal, removable hard glass condenser lenses Nos. 1 and 2
- Two heat absorption filters
- Window shutter permitting reading or making notes in darkened auditorium during projection
- Built-in tilting device enabling the projected image to be moved up or down
- Revolving front permitting the projection of vertical or horizontal film strips
- External device for correctly centering the lamp
- Carrier for the glass slide and film gates horizontally adjustable insuring maximum illumination
- External interchangeable condenser, varying according to the type of lens used in the projector

Cat. No. and
Code Word

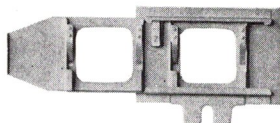
Price

75,600 NAABC	Projector Model VIII-s—1000, without slide changer and without film attachment and without lens	
75,605 TUUOD	Removable Slide Changer, for 2 x 2 in. (50 x 50mm) LEICA glass slides	
75,610 NBBCE	Projector Model VIII-s—1000, with slide changer, without lens ...	
	<i>Specify Type and Focal Length of Lens to be used so that proper Condenser may be supplied.</i>	
75,615 NCCDF	Projector Model VIII-s—1000, with slide changer and with projection lens HEKTOR f:2.5, 85mm focus, for screen distances 10 to 52 ft.	
75,620 NDDGH	Projector Model VIII-s—1000, with slide changer and with projection lens HEKTOR f:2.5, 100mm focus, for screen distances 13 to 52 ft.	
75,625 NEEJK	Projector Model VIII-s—1000, with slide changer and with projection lens DIMAX f:4.5, 120mm focus, for screen distances 16 to 62 ft.	
75,630 NFFLM	Projector Model VIII-s—1000, with slide changer and with projection lens DIMAR f:3.5, 150mm focus, for screen distances 20 to 74 ft.	
75,635 NGGNO	Projector Model VIII-s—1000, with slide changer and with projection lens DIMAR f:4, 200mm focus, and supporting bracket for the projector, for screen distances 30 to 80 ft.	
75,640 NHHPR	Projector Model VIII-s—1000, with slide changer and with projection lens DIMAR f:4, 250mm focus, and supporting bracket for the projector, for screen distances 33 to 86 ft.	
75,645 NIIST	Projector Model VIII-s—1000, with slide changer and with projection lens EPNOR f:4.3, 300mm focus, and supporting bracket for the projector, for screen distances 50 to 140 ft.	
75,660 TUUEM	Removable Film Attachment, for LEICA Positive Film Strips	

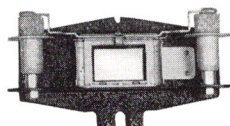
PROJECTION APPARATUS



*Attachment for Micro Projection
on VIII-s Projector*



No. 75,800



No. 75,805

ATTACHMENTS FOR PROJECTORS, MODEL VIII-s

Cat. No. and Code Word		Price
75,800 TUUOD	Removable Slide Changer for 2 x 2 in. (50 x 50mm) LEICA glass slides	
75,805 TUUEM	Removable Film Attachment for LEICA 35mm positive film strips, capacity 14 ft.	
75,808 UASKU	Interchangeable Mask , $\frac{3}{4}$ x 1 in. (18 x 24mm), single frame, for Removable Film Attachment No. 75,805	
75,810 TUUGN	Removable Gate for 2 x 2 in. (50 x 50mm) glass slides, with picture area up to $1\frac{3}{8}$ x $1\frac{1}{8}$ in. (30 x 40mm)	
75,812 TUUCL	Removable Gate for glass slides $1\frac{3}{8}$ x $4\frac{5}{8}$ in. (35 x 120mm) picture area 1 x $1\frac{1}{2}$ in.	
75,825 MKUOO	Attachment for the projection of microscope slides at a magnification up to 200X, with object stage, small optical bench and holder for the objectives, without objectives	_____
75,827 ACUBE	Micro Objective No. 1	_____
75,829 ACEDU	Micro Objective No. 2	_____
75,830 MIKUU	Attachment for Micro Projection , complete with objectives Nos. 1 and 2	=====
	The External Interchangeable Condenser No. 75,920 (for 50mm objectives) should be used with this attachment.	
75,850 VEUUM	Ventilating Unit with blower of highest efficiency, cooling both the lamp housing and the slide, with universal motor A.C. and D.C., 110-volts	
	(This Ventilating Unit is included in the equipment of the Projectors VIII-s-750 and VIII-s-1000 as a necessary part; it can likewise be used for the Projectors VIII-s-250 and VIII-s-400 if it is desired to keep the temperature of these projectors as low as possible. However, these projectors do not require an additional cooling unit.)	

PROJECTION APPARATUS

PROJECTION LENSES

Cat. No. and Code Word		Price
75,880 UFEDU- IZUUS	Projection Lens HEKTOR f:2.5, 85mm focus, with focusing mount	
75,882 BEUYU- IZUUS	Projection Lens EPIS f:3.6, 80mm focus, with focusing mount	
75,884 TUUFZ- IZUUS	Projection Lens HEKTOR f:2.5, 100mm focus, with focusing mount	
75,886 UPEOB- IZUUS	Projection Lens DIMAX f:4.5, 120mm focus, with focusing mount	
75,888 TUUBA	Projection Lens DIMAR f:3.5, 150mm focus, with focusing mount and special carrier with holder for slide changer or film attachment	
75,890 TUUKB	Projection Lens DIMAR f:4, 200mm focus, with focusing mount, special carrier with holder for slide changer or film attachment and supporting bracket for the projector	
75,892 TVUUR	Projection Lens DIMAR f:4, 250mm focus, with focusing mount, special carrier with holder for slide changer or film attachment and supporting bracket for the projector	
75,894 TUUBX	Projection Lens EPNOR f:4.3, 300mm focus, with focusing mount, special carrier with holder for slide changer or film attachment and supporting bracket for the projector	
75,902 TUUNQ	Extension Tube for using the 200mm LEICA TELYT lens on the VIII-s Projector	
75,905 UMEXU	Carrier with flange for all LEICA lenses and for the projection lenses of 80, 85, 100 and 120mm focus	

(This carrier is included with all the various projector outfits listed, with the exception of the equipments including the long focus projection lenses of 150, 200, 250 and 300mm focus, because each of these projection lenses is provided with a special carrier for attaching the lens to the projector. The carrier No. 75,905 is therefore, required as an additional item for projectors originally equipped with a 150, 200, 250 or 300mm focus lens when an additional projection lens of shorter focal length or a LEICA lens is added.)

CONDENSERS

75,920 DLUWU	External, Interchangeable Condenser for 50mm LEICA lenses and for the micro attachment
75,922 UDAKI	External, Interchangeable Condenser for 73mm and 90mm LEICA lenses and 80, 85 and 100mm projection lenses
75,924 UBIKU	External, Interchangeable Condenser for 135 and 200mm LEICA lenses and 120 and 150mm projection lenses
75,926 UUPMI	External, Interchangeable Condenser for 200, 250 and 300mm projection lenses

PROJECTION APPARATUS

Cat. No. and
Code Word

Price

75,930 TRPUU	Internal, Removable Hardglass Condenser No. 1 , in mount for replacement
75,932 TRVZO	Internal, Removable Hardglass Condenser No. 2 , in mount for replacement
75,934 TNUUZ	Internal, Removable Condenser No. 3 , in mount for use with 50mm ELMAR lens only
	(For utmost efficiency this condenser is suggested for the Elmar 50mm lens in the VIII-s—250 and VIII-s—400 projectors instead of the normally supplied condenser No. 1. It is inserted into the groove marked "3" after removing condenser No. 1 from groove marked "1." The condenser No. 3 is also recommended when lamps of 220 volts are being used with the projection lens 120mm and the LEICA lenses of 50mm, 90mm, 135mm and 200mm focus.)
75,938 FUULI	Heat Absorption Filter for VIII-s—250, VIII-s—750 and VIII-s—1000 Projectors, as replacement
75,940 FWWAL	Heat Absorption Filter for VIII-s—400 Projector, as replacement ..

SPARE LAMPS

75,960 APUUM	Projection Lamp, 250-watt, 110-volts
75,962 XYFOR	Projection Lamp, 400-watt, 110-volts
75,964 XYSET	Projection Lamp, 750-watt, 110-volts
75,966 XYTHA	Projection Lamp, 1000-watt, 110-volts
75,970 BUUMG	Low-Voltage Projection Lamp, 250-watt, 50-volts, for VIII-s—250 Projector
75,972 UUZOB	Low-Voltage Projection Lamp, 375-watt, 75-volts, for VIII-s—400 Projector

The low-voltage lamps can be used in place of the standard lamps in order to increase the brilliancy. They must be used with rheostats as listed below:

75,974 BPUUO	Resistor for Low-Voltage Lamp, 250-watt, 50-volts, for 110-volt current
75,976 TLUUB	Resistor for Low-Voltage Lamp, 375-watt, 75-volts, for 110-volt current
75,978 ULOUB	Rheostat , adjustable, for use with 375-watt, 75-volts lamp, for 110/250-volt current

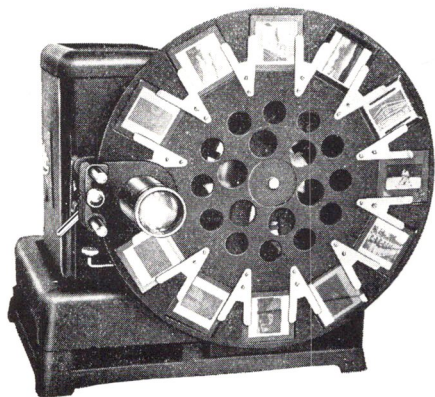
PROJECTION APPARATUS

CARRYING CASES AND PROJECTION TABLES

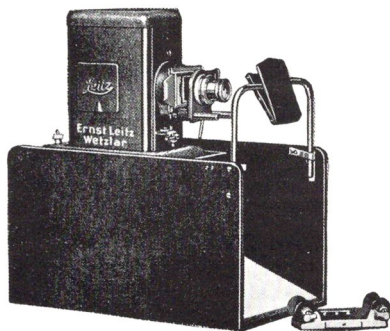
Cat. No. and
Code Word

Price

75,980	TOIUU	Carrying Case for Projectors VIII-s—250, or VIII-s—400, with accessories
75,982	TEEAH	Carrying Case for Projectors VIII-s—750 or VIII-s—1000, with accessories
75,990	ELRUU	Projection Table, with platform that can be tilted up or down, so as to permit projector to be used at an angle, with three tripod legs, 28 in. high
75,992	EMUUX	Projection Table, same as No. 75,990, but 52 in. high



No. 76,100 with VIII-s Projector



No. 76,200 with VIII-s Projector

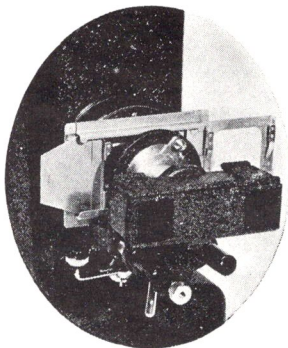
ATTACHMENTS FOR CONTINUOUS PROJECTION

76,100	CANOE	Automatic Continuous Projector Attachment, for continuously showing twelve 2 x 2 in. glass slides with Projectors VIII-s—250 and VIII-s—400, including base on which projector is placed, without projector
76,103	CASAU	Carrying Case for Automatic Projector Attachment No. 76,100 with either Projector VIII-s—250 or VIII-s—400
76,105	BANAN	Base for the Automatic Continuous Projector Attachment, for use with Projectors Model VIII-s—750 and VIII-s—1000 which are provided with a ventilating unit, to compensate for the increased height

ATTACHMENT FOR READING PURPOSES

76,200	TPUUX	Viewing Apparatus for Projectors Models VIII-s—250 and VIII-s—400 consisting of box-shaped base upon which the projector is placed with diagonally arranged projection surface 10 x 10 in. in size including surface-silvered mirror, for use as a reading desk or as a viewer for negatives, a 50mm lens is recommended for the projector when used with this apparatus in which case the size of the projected image is 6 $\frac{1}{8}$ x 10 in.
--------	-------	---

PROJECTION APPARATUS



*No. 76,250
with Stereoly attached to Projector*

ACCESSORIES FOR THREE DIMENSIONAL PROJECTION — THE STEREOLY-POLAROID SYSTEM

This projection system allows both black and white and color stereo pictures made with the Leica to be projected and viewed by many individuals at the same time. Equipment necessary for this process consists of: Any model of the VIII-s Projector with a 50mm ELMAR, HEKTOR or SUMMAR lens . . . a Stereoly Attachment . . . Complete Accessory equipment, listed below . . . a correct type of screen . . . and Polaroid Spectacles for each of the spectators.

**Cat. No. and
Code Word**

Price

76,250 POLAR	Complete Accessory Equipment , for three dimensional projection, Stereoly-Polaroid System, consisting of two Polaroid filters in special mount for use on the Stereoly Attachment, and a Special Bracket to hold the latter on the VIII-s Projector, but not including the Stereoly Attachment
76,255 SPECS	Polaroid Spectacles , for use by the observer for viewing pictures projected through the medium of the Stereoly-Polaroid System. 1 to 10 Spectacles, per pair 11 to 24 Spectacles, per pair

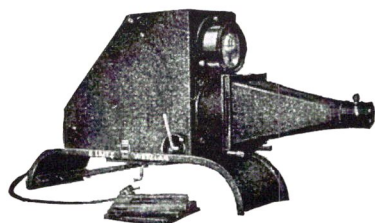
Prices on larger quantities will be supplied upon request.

NOTE: THE STEREOLY ATTACHMENT WILL BE FOUND LISTED ON PAGE 24.

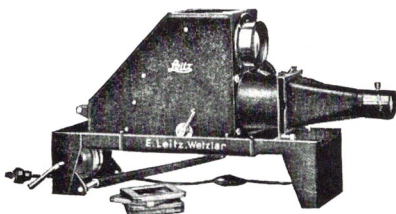
VIII-s PROJECTORS WILL BE FOUND LISTED ON PAGES 73-77.

IT IS NECESSARY TO USE SPECIAL TYPES OF SCREENS FOR THE STEREOLY-POLAROID SYSTEM NAMES OF RECOMMENDED SCREENS WILL BE SUPPLIED UPON REQUEST.

PROJECTION APPARATUS



No. 76,800



No. 76,810

COMBINATION PROJECTORS

Cat. No. and
Code Word

Price

- | | |
|-----------------|--|
| 76,800
ABCUU | <p>Combination Projector V P — 325, Model I, with well-ventilated lamp-housing, removable from the base, 250-watt, 110-volt, pre-centered projection lamp, four-mirror illuminating system for the field of opaque projection which is $5\frac{1}{2} \times 5\frac{1}{2}$ in., surface-silvered projection mirror inside the lamp-housing, projection lens EPIS f:3.6, 325mm focus for opaque objects, condenser $4\frac{3}{4}$ in. in diameter for lantern slide projection, removable lantern slide attachment with projection lens DIMENAR 190mm focal length, two slide carriers for $3\frac{1}{4} \times 4$ in. lantern slides and two carriers for $3\frac{1}{4} \times 3\frac{1}{4}$ in. lantern slides</p> |
| 76,805
ABUZZ | <p>Opaque Projector V P — 325, Model I, without condenser and without lantern slide attachment, for opaque projection only</p> |
| 76,810
JASUU | <p>Combination Projector V P — 325, Model II, with well-ventilated lamp-housing, removable from the base, arranged to slide on the base for the consecutive projection of large opaque objects in consecutive sections, with four-mirror illuminating system for the field of opaque projection which is $5\frac{1}{2} \times 5\frac{1}{2}$ in., surface-silvered projection mirror inside the lamp-housing, projection lens EPIS f:3.6, 325mm focus, substantially built base with aperture $5\frac{1}{2} \times 11$ in., condenser $4\frac{3}{4}$ in. in diameter for lantern slide projection, removable lantern slide attachment with projection lens DIMAX 200mm focus, four slide carriers for $3\frac{1}{4} \times 4$ in. lantern slides and two carriers for $3\frac{1}{4} \times 3\frac{1}{4}$ in. lantern slides</p> |
| 76,815
JBUUG | <p>Opaque Projector V P — 325, Model II, same as No. 76,810, but without condenser and without lantern slide attachment, for opaque projection apparatus</p> |

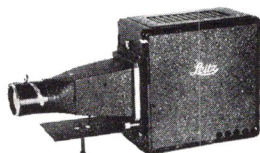
PROJECTION APPARATUS

ACCESSORIES FOR COMBINATION PROJECTORS V P—325, MODELS I AND II

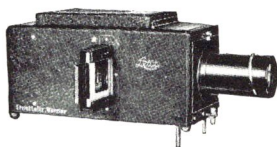
Cat. No. and Code Word		Price
	Universal Attachment for the projection of LEICA glass slides, LEICA positive film strips, and for the projection of microscope slides, consisting of:	
76,820 UUPNL	Removable Front with carrier for the projection lenses and with additional condenser lens (this part is attached to the two-lens condenser of the Combination Projector in place of the lantern slide attachment)	
76,830 UUPTX	Objective Carrier with projection objective MILAR f:4.5, 65mm focus (this cannot be used on the projector without No. 76,820)	
76,835 TUUOD	Removable Slide Changer for 2 x 2 in. (50 x 50mm) LEICA glass slides	
76,840 TUUEM	Removable Film Attachment for LEICA positive film strips	
76,845 UASKU	Interchangeable Mask , 18 x 24mm	
76,850 MKUOO	Attachment for the Projection of Microscope Slides at a magnification up to 200X, with object stage, small optical bench and holder for the objectives, without objectives	
	(This cannot be used on the projector without No. 76,820.)	
76,855 ACUBE	Micro Objective No. 1	
76,860 ACEDU	Micro Objective No. 2	_____
76,865 UUPWD	Universal Attachment, complete for LEICA lantern slides, LEICA film strips, and Micro Projection	=====
76,870 APUUM	Spare Lamp, 250-watt, 110-volts	
76,875 ENVUU	Carrying Case for Combination Projector V P — 325, Model I with accessories	
76,880 JSUUZ	Carrying Case for Combination Projector V P — 325, Model II with accessories	

Note: A most extensive line of larger combination projectors is available. Particulars will gladly be furnished on request.

PROJECTION APPARATUS



Projector IV-s



Projector IV-f

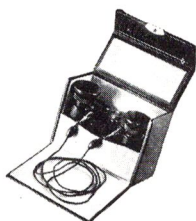
LANTERN SLIDE PROJECTORS

Cat. No. and
Code Word

Price

76,910 DEFUU	Lantern Slide Projector, Model IV-s , for the projection of Lantern Slides, a very compact projector with collapsible front attachment, ideal for traveling, dimensions being only 10½ x 6 x 6⅞ in., with projection lamp 250-watt, two-lens condenser, and projection lens DIMAR 200mm focus, and two slide carriers for 3¼ x 4 in. slides and two carriers for 3¼ x 3¼ in. slides
76,915 APUUM	Spare Lamp , 250-watt, 110-volts
76,920 DREUU	Carrying Case for Lantern Slide Projector, Model IV-s
76,930 ZEKUU- ZGUUS	Lantern Slide Projector, Model IV-F , with projection lamp 500-watt, 110-volts, heat absorption filter, projection lens EPIS f:3.6, 325mm focus, for lantern slides, with slide changer and two slide carriers, for 3¼ x 4 in. slides and two carriers for 3¼ x 3¼ in. slides, external device for centering the lamp, built-in tilting device, enabling the projected image to be moved up or down. On account of its extreme brilliancy it is particularly recommended for the projection of color slides
76,935 ZUUCO	Spare Lamp , 500-watt, 110-volts
76,940 ZISUU	Carrying Case for Lantern Slide Projector IV-f

PRISM BINOCULARS



No. 79,000



No. 79,030

**Cat. No. and
Code Word**

Price

- 79,000**
BINAR
LEITZ Prism Opera Glass, 3 x 13.5 (magnification 3X; diameter of objectives, 13.5mm). Light transmitting power, 20.25; field of view: 13.3 degrees, linear at 100 yards: 23 yards; weight, 7½ ounces; central wheel focusing. This glass has a wide field of view and high light transmission, making it excellent for use in the theatre or opera. Supplied with black metal parts, black leather covering, neckstrap and folding black morocco leather case with mirror ..
- 79,010**
BITUR
LEITZ Prism Binocular, 4 x 20 (magnification 4X; diameter of objectives, 20mm). Light transmitting power, 25; field of view: 10.3 degrees, linear at 1000 yards: 180 yards; weight, 10 ounces; central wheel focusing. A small glass of high light transmitting power and wide field of view; ideal for indoor and outdoor sporting events, the theatre, and traveling; with brown leather case and neckstrap
- 79,020**
BIDAL
LEITZ Prism Binocular, 6 x 15 (magnification 6X; diameter of objectives, 15mm). Light transmitting power, 6.25; field of view: 6.8 degrees, linear at 1000 yards: 122 yards; weight, 8 ounces; central wheel focusing. A glass of limited light transmission intended for daytime use, but extremely compact making it ideal for traveling; with brown leather case and neckstrap
- 79,030**
BINOLIT
LEITZ Prism Binocular, 6 x 24 Lightweight Type, (magnification 6X; diameter of objectives, 24mm). Light transmitting power, 16; field of view: 8.5 degrees, linear at 1000 yards: 150 yards; weight, 13 ounces; central wheel focusing. A general all-around glass, light and compact. With brown leather case and neckstrap
- 79,040**
BIDOXIT
LEITZ Prism Binocular, 6 x 30 Lightweight Type, (magnification 6X; diameter of objectives, 30mm). Light transmitting power, 25; field of view: 8.5 degrees, linear at 1000 yards: 150 yards; weight, 15 ounces; central wheel focusing. This glass has a relatively high light transmitting power, making it suitable for use in poor light. With brown leather case and neckstrap
- 79,045**
BINUXIT
LEITZ Prism Binocular, 8 x 30 Lightweight Type, (magnification 8X; diameter of objectives, 30mm). Light transmitting power, 14; field of view: 8.5 degrees, linear at 1000 yards: 150 yards; weight, 16 ounces; central wheel focusing. This glass provides a wide field of view, making it easier and quicker to locate specific objects. With brown leather case and neckstrap

PRISM BINOCULARS



No. 79,045



No. 79,050

**Cat. No. and
Code Word**

Price

- | | |
|---------------------|---|
| 79,050
FOREST | LEITZ Prism Binocular, 6 x 42 (magnification 6X; diameter of objectives, 42mm). Light transmitting power, 49; field of view: 7 degrees, linear at 1000 yards: 122 yards; weight, 28½ ounces; central wheel focusing. A universal hunting glass, by virtue of high light transmission and relatively small weight and bulk; also ideal for use at sea and in the air. With brown leather case and neckstrap |
| 79,055
FORSTA | LEITZ Prism Binocular, 8 x 42 (magnification 8X; diameter of objectives, 42mm). Light transmitting power, 27.6; field of view: 6.3 degrees, linear at 1000 yards: 110 yards; weight, 28 ounces; central wheel focusing. A sport glass of higher magnification and good light transmitting power. With brown leather case and neckstrap |
| 79,060
MARSEPTIT | LEITZ Prism Binocular, 7 x 50 Lightweight Type, (magnification 7X; diameter of objectives, 50mm). Light transmitting power, 51; field of view: 7.3 degrees, linear at 1000 yards: 128 yards; weight, 28¼ ounces; central wheel focusing. A glass of the highest possible light transmitting power, ideal as a night glass for marine and aviation purposes. With brown leather case and neckstrap .. |
| 79,065
MAROCITIT | LEITZ Prism Binocular, 8 x 60 Lightweight Type, (magnification 8X; diameter of objectives, 60mm). Light transmitting power, 52; field of view: 6 degrees, linear at 1000 yards: 107 yards; weight, 41 ounces; central wheel focusing. This binocular couples higher magnification with the highest possible light transmitting power and is used as a night glass for marine or aviation purposes. With brown leather case and neckstrap |
| 79,070
MARDIXIT | LEITZ Prism Binocular, 10 x 50 Lightweight Type, (magnification 10X; diameter of objectives, 50mm). Light transmitting power, 25; field of view: 5 degrees, linear at 1000 yards: 87.5 yards; weight, 28 ounces; central wheel focusing. This glass combines high magnification and light transmitting power, making it useful for hunting purposes or as a marine glass. With brown leather case and neckstrap |

PRISM BINOCULARS



No. 79,085



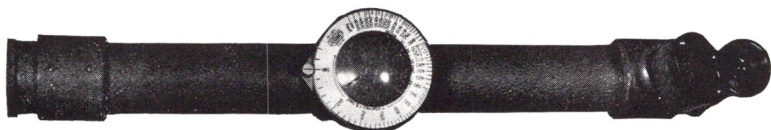
No. 79,095

Cat. No. and
Code Word

Price

- | | |
|--------------------|--|
| 79,075 | LEITZ Prism Binocular, 10 x 60 Lightweight Type , (magnification 10X; diameter of objectives, 60mm). Light transmitting power, 36; field of view: 5.8 degrees, linear at 1000 yards: 102 yards; weight, 3½ ounces, central wheel focusing. A glass of high magnification and wide field of view, and also possessing a very high light transmitting power making it useful as a night glass for hunting, marine and aviation purposes |
| DECIMARIT | |
| 79,080 | LEITZ Prism Binocular, 12 x 60 Lightweight Type , (magnification 12X; diameter of objectives, 60mm). Light transmitting power, 25; field of view: 4.3 degrees, linear at 1000 yards: 75 yards; weight, 40½ ounces; central wheel focusing. A glass of higher magnification and high light transmitting power which is a favorite for use at sea. With brown leather case and neckstrap |
| MARDOCIT | |
| 79,085 | LEITZ Prism Binocular, 10 x 40 Lightweight Type , (magnification 10X; diameter of objectives, 40mm). Light transmitting power, 16; field of view: 7.3 degrees, linear at 1000 yards: 128 yards; weight, 25¼ ounces; central wheel focusing. A glass combining high magnification, good light transmitting power and a wide field of view. Useful at sea or in the air. With brown leather case and neckstrap |
| CAMPARIT | |
| 79,090 | LEITZ Prism Binocular, 12 x 50 Lightweight Type , (magnification 12X; diameter of objectives, 50mm). Light transmitting power, 17.4; field of view: 5.75 degrees, linear at 1000 yards: 100 yards; weight, 30½ ounces; central wheel focusing. A glass, for use at sea and in the air, which has higher magnification combined with high light transmitting power and wide field of view. With brown leather case and neckstrap |
| CAMPOMARIT | |
| 79,095 | LEITZ Prism Binocular, 15 x 60 Lightweight Type , (magnification 15X; diameter of objectives, 60mm). Light transmitting power, 16; field of view: 4.65 degrees, linear at 1000 yards: 81 yards; weight, 41½ ounces; central wheel focusing. A glass for marine and aviation purposes, having great magnification combined with high light transmitting power and a wide field of view. With brown leather case and neckstrap |
| CAMPOFORTIT | |

RANGE FINDERS FOR SHOOTING AND SURVEYING, HORIZONTAL AND VERTICAL MEASUREMENTS OF ALL KINDS



No. 79,200

Cat. No. and Code Word		Price
79,200 GEODI	Leitz Range Finder GEODI , with 30cm. base length and interchangeable monocular prism glass 6X magnification, measuring range 170 to 3000 ft. in canvas case, with shoulder strap	
79,202 GEOME	Leitz Range Finder GEODI , with 30cm. base length and interchangeable Galilean telescope 5X magnification, measuring range 170 to 3000 ft. in canvas case, with shoulder strap	
79,204 GEOTR	Leitz Range Finder GEODI , with 30cm. base length and interchangeable monocular prism glass 6X magnification special model with a measuring range from 30 to 300 ft. in canvas case, with shoulder strap	
79,206 GEOHU	Leitz Range Finder GEODI , with 30cm base length and interchangeable monocular prism glass 6X magnification, special model with a measuring range from 100 to 1000 ft. in canvas case, with shoulder strap	
79,208 TEFIL	Set of Three Filters of different densities. These filters give better contrast between the two range finder images	
79,210 MOPRI	Monocular Prism Glass , 6X magnification	
79,212 MOMAS	Galilean Telescope , 5X magnification	

CONVERSION PRICES FOR LEICA CAMERAS, LENSES, AND ACCESSORIES

Former models of the LEICA Camera except Model B and accessories can be converted into later models at any time. In converting LEICA Cameras, the latest refinements and improvements are included for each particular model. However, conversion of the earlier LEICAS to Model IIIB cannot be made as yet.

The mechanism is carefully cleaned, lubricated and checked. Shutter speeds are tested, and the lens or lenses accurately adjusted for focus.

- (1) LEICA Model A Converted to Model C with lens
- (2) LEICA Model A Converted to Model II without lens
- (3) LEICA Model A Converted to Model III without lens
- (4) LEICA Model A Converted to Model IIIa without lens
- (5) LEICA Model C Converted to Model II without lens
- (6) LEICA Model C Converted to Model III without lens
- (7) LEICA Model C Converted to Model IIIa without lens
- (8) LEICA Standard Model Converted to Model II (lens already coupled)
- (9) LEICA Standard Model Converted to Model III (lens already coupled)
- (10) LEICA Standard Model Converted to Model IIIa (lens already coupled)
- (11) LEICA Standard Model Chrome Converted to II Chrome (lens already coupled)
- (12) LEICA Standard Model Chrome Converted to III Chrome ... (lens already coupled)
- (13) LEICA Standard Model Chrome Converted to IIIa Chrome .. (lens already coupled)
- (14) LEICA Model II Converted to Model III (lens already coupled)
- (15) LEICA Model II Converted to Model IIIa (lens already coupled)
- (16) LEICA Model II Chrome Converted to III Chrome (lens already coupled)
- (17) LEICA Model II Chrome Converted to IIIa Chrome (lens already coupled)
- (18) LEICA Model III Converted to Model IIIa (lens already coupled)
- (19) LEICA Model III Chrome Converted to IIIa Chrome (lens already coupled)

The conversion of black-finished cameras into Model IIIa does not include chromium plating. The cameras retain the black finish unless they are already chromium plated. It is not possible to have a black model chromium plated.

- (20) Converting ELMAR 35mm, f:3.5 lens, to fit Models II, III, IIIa and IIIB.....
- (21) Converting ELMAR 50mm, f:3.5 lens, to fit Models II, III, IIIa and IIIB.....
- (22) Converting HEKTOR 50mm, f:2.5 lens, to fit Models II, III, IIIa and IIIB
- (23) Converting ELMAR 90mm, f:4 lens, to fit Models II, III, IIIa and IIIB.....
- (24) Converting ELMAR 135mm, f:4.5 lens, to fit Models II, III, IIIa and IIIB.....

NOTE: ONLY THE VERY FIRST LEICA LENSES AS SUPPLIED WITH THE OLD MODEL A AND C LEICAS REQUIRE THIS CONVERSION WHICH INCLUDES THE INSTALLATION OF A COUPLING DEVICE FOR THE BUILT-IN RANGE FINDER. ALL THE LATER LENS MODELS DO NOT REQUIRE ANY CHANGES AND CAN BE USED ON ALL LEICA CAMERAS.

- (25) Converting old style Sliding Focusing Copy Attachment No. 1 to accommodate LEICA Models III and IIIa including clip for magnifier
 - (26) Converting Winko to Wintu Angle View Finder for use with built-in range finder
 - (27) Attaching 1½X focusing magnifier to range finder of Model II LEICA
 - (28) Attaching eyelets including neckstrap to Models A, C, Standard Model and II
Early models of the LEICA require certain changes in order that the Rapid Winder Cat. Nos. 67,115 and 67,117 and the Leica Motor No. 67,110 may be used, viz:
 - (29) Cameras No. 1 to 111,449, new base plate, large base plate pin, and new winding knob and shaft
 - (30) Cameras No. 111,450 to 159,000, new winding knob and shaft
- The Rapid Winder and Leica Motor will fit directly all LEICAS above serial No. 159,000.

LEICA PUBLICATIONS

LEICA PHOTOGRAPHY, monthly publication issued free of charge to all LEICA owners residing in the United States who have registered their cameras with us, and at \$1.00 to non-LEICA owners; \$2.00 yearly subscription to all residing outside the United States. Edited by Augustus Wolfman and George W. Hesse.

Cat. No. and
Code Word

Price

The following books are obtainable from all photographic dealers or direct from E. Leitz, Inc.

79,500 LIMAN	"The LEICA Manual," a book for the amateur and professional LEICA worker, edited and published by Willard D. Morgan and Henry M. Lester. Contributed chapters by over twenty experts in various branches of LEICA photography; about 600 pages containing the most complete information covering the field of LEICA photography, buckram binding, profusely illustrated
79,505 COLOR	"The LEICA Color Book," by Anton F. Baumann; it contains 72 reproductions from LEICA color transparencies and many interesting articles on color photography
79,510 GALRI	"Perspective As You Please," by Dr. Alfred Grabner, 25 pages profusely illustrated. A book explaining the detailed uses of lenses of various focal lengths
79,515 MITRI	"How To Use Your Candid Camera," by Ivan Dmitri, illustrated with about 70 photographs, cloth bound
79,520 KARFL	"My Leica And I," edited by Kurt Peter Karfeld, Leica amateurs show their pictures, contains 204 pages with 20 interesting articles, 152 photographs
79,525 KRUCK	"Snow Canvas," by Prof. Stefan Kruckenhauser, "Ski Men and Mountains with the Leica," contains 120 pages of articles on winter photography with numerous illustrations

ALPHABETICAL INDEX OF CODE WORDS

Code Word	Cat. No. Page	Code Word	Cat. No. Page	Code Word	Cat. No. Page
A				D	
ABCOO	68,330 31	BLITZ	67,550 25	DECIMARIT	79,075 88
ABCUU	76,800 83	BOOXZ	70,075 39	DEEMH	72,234 53
ABLON	68,320 31	BPUUU	75,974 80	DEEMH	72,413 57
ABUUZ	76,805 83	BRACK	67,530 25	DEEQK	72,316 55
ACUBE	75,827 78	BUUMG	75,970 80	DEFOO	68,430 32
ACUBE	76,855 84	C		DEFUU	76,910 85
ACEDU	75,829 78	CALFA	65,958 9	DIREKT	66,910 19
ACEDU	76,860 84	CALOS	72,010 49	DLUUW	75,920 79
AFLOO	68,305 30	CALOS	72,116 51	DOOLU	67,080 21
AGRIF	68,310 31	CAMPARIT	79,085 88	DOOLU-	
AGULI	68,505 33	CAMPO-		CHROM	67,082 21
AHOOT	66,060 10	FORTIT	79,095 88	DREUM	76,920 85
ANZOO	68,325 31	CAMPO-		E	
APDOO	66,915 19	MARIT	79,090 88	EITPL	72,416 57
APOOM	66,918 19	CANOE	76,100 81	EKURZ	65,610 5
APUUM	75,960 80	CARIR	73,850 70	ELANG	65,670 6
APUUM	76,870 84	CASAU	76,103 81	ELANG	72,228 53
APUUM	76,915 85	CBOOD	73,405 65	ELANG	72,266 54
ARMST	67,312 24	CDEEO	73,408 65	ELANG	72,308 55
AUFET	66,052 9	CDOOB	73,410 65	ELDIA	68,810 35
AUFET	68,158 29	CELLU	69,040 37	ELDUR	68,800 35
AUFSU	66,050 9	CENTO	73,915 70	ELESS	72,130 51
AYOOC	66,055 10	CERED	69,042 37	ELESS	72,180 52
B		CFIOO	73,412 65	ELGLA	68,886 37
BANAN	76,105 81	CFOOZ	73,415 65	ELKIN	68,815 35
BAZOO	70,950 48	CGLOO	73,418 65	ELLET	68,820 35
BEECH	72,104 50	CGOOY	73,420 65	ELMAR	65,620 5
BEECH	72,132 51	CHNOO	73,422 65	ELMAR	72,306 55
BEECH	72,196 52	CHOOX	73,421 65	ELMAR	72,350 56
BEECH	72,232 53	CHROM	66,625 16	ELPET	70,590 45
BEECH	72,412 57	CLIPP	66,262 12	ELPIK	70,580 45
BEHOO	70,922 48	CMEET-		ELPRO	70,570 45
BEINS	70,920 47	XCEES-		ELRUU	75,990 81
BEKUR	70,925 48	XBEET	72,260 54	EMOOX	68,040 26
BELOS	70,990 48	COLOR	79,505 91	EMTOO	65,702 6
BELUN	70,900 47	COOED	70,120 39	EMTOO	68,130 29
BEMTI	72,100 50	COOED	72,309 55	EMUUX	75,992 81
BEOOY	70,940 48	COOHS	70,125 40	ENVUU	76,875 84
BERAT	70,992 48	COOLG	66,156 11	EPNUU	75,445 76
BESUM	70,912 47	COOLG	68,168 29	EPZOO	68,025 26
BETAB	70,942 48	COOPI	73,632 66	EQOOT	68,124 28
BETRY	70,915 47	COOTL	70,122 39	ERDOO	68,090 28
BEUUY-IZUUS	75,040 72	COOWQ	72,448 58	ESFOO	68,050 26
BEUUY-IZUUS	75,882 79	COPIN	70,330 43	ESFOS	68,020 26
BIDAL	79,020 86	CORCF	68,465 33	ESMOS	68,015 26
BIDOXIT	79,040 86	CORET	68,490 33	ESNAR	68,000 26
BINAR	79,000 86	CORID	68,455 32	ESOOR	68,005 26
BINOLIT	79,030 86	CORLE	68,462 33	ETBIX	68,110 28
BINXIT	79,045 86	CORUN	68,450 32	ETBUL	68,112 28
BITUR	79,010 86	CORYB	68,458 32	ETGUS	68,070 28
		COSLA	70,355 43	ETHOO	66,062 10
		COSTI	68,452 32		

Code Word	Cat. No. Page	Code Word	Cat. No. Page	Code Word	Cat. No. Page
N					
NAABC	75,600 77	PBEED	73,863 70	SEVPL	72,356 56
NAHNE	73,870 70	PGOOX	66,540 16	SFTOO	66,115 11
NAKUL	68,610 34	PGYOO	66,550 16	SFUUE	75,065 72
NAMAS	68,615 34	PLOOT	65,720 7	SGUUD	75,070 72
NATRA	68,600 34	PLOOT	72,190 52	SGVUU	75,045 72
NBBCE	75,610 77	PLOOT	72,226 53	SHADE	66,725 17
NCCDF	75,615 77	PLOOT	72,264 54	SHOEE	66,260 12
NDDGH	75,620 77	POLAR	76,250 82	SHUUC	75,080 72
NEEJK	75,625 77	POAH	66,530 16	SIUB	75,025 71
NFFLM	75,630 77	POOBV	66,532 16	SIUB-GLAS	75,010 71
NGGNO	75,635 77	POOCI	66,534 16	SIXPL	72,318 55
NHHPR	75,640 77	POODW	66,544 16	SKBUU	75,044 72
NIIST	75,645 77	POEEK	66,556 16	SLDUU	75,048 72
NOOKY	67,200 23	POOFX	66,536 16	SMFUU	75,047 72
NOOKY-		POOGL	66,554 16	SMUUY	75,000 71
HESUM	67,210 23	POOHY	66,558 16	SNHUU	75,046 72
NOZLE	68,420 32	Q			
NUFIR	67,157 23	QBOOE	66,406 14	SNEEX	75,038 71
O					
OBXAD	72,118 51	QCPOO	66,346 13	SOFIT	70,835 47
OFSET	73,930 70	R			
OHEBO	65,740 7	RAMET	66,080 10	SOOHN	66,700 17
OKARO	65,925 8	RAMET-		SOOMP	66,715 17
OLDER	73,840 69	CHROM	66,081 10	SOUUW-GLAS	75,018 71
OLIGO	65,400 4	RASAL	66,085 10	SOUUW	75,030 71
OOFRC	66,890 19	RASAL-		SPECS	76,255 82
OORES	70,000 38	CHROM	66,090 10	SPMOO-	
OORES	72,140 51	RASUK	66,070 10	DOOSL	70,195 42
OORES	72,294 55	CHROM	66,075 10	SPMOO-	
OORES	72,384 57	REDYX	72,106 50	DOOSL	72,136 51
OOZIS	70,500 44	REDYX	72,134 51	SPMOO-	
OPZKU	70,510 44	REDYX	72,198 52	DOOSL	72,182 52
OPKOM	66,882 18	REDYX	72,236 53	SPMOO-	
ORAKO	65,920 8	REDYX	72,414 57	DOOSL	72,290 55
ORAKO-		RFUOO	70,155 40	SPMOO-	
CHROM	65,922 8	RHEOS	73,765 69	DOOSL	72,380 57
ORTVO		RIFLE	67,150 23	SPMUU	75,060 72
CHROM	66,870 18	RIFUN	67,155 23	SPOOV	70,180 42
ORTUX	65,930 8	RIOOZ	70,150 40	SPUCA	66,805 18
ORVZO	66,840 18	ROOMB	70,526 45	SPULM	66,810 18
ORVZO-		RVZOO	66,104 10	SPUUV	75,022 71
CHROM	66,842 18	RVZOO	68,166 29	STALI	70,675 46
ORUXO	65,932 8	RWBOO	66,092 10	STAMA	70,538 45
ORWYB	65,935 8	RWBOO	68,164 29	STERO	67,300 24
ORXDO	66,848 18	S			
ORYCE	65,937 8	SAIOO	66,150 11	STUOO	70,240 42
ORZHO	66,860 18	SBUUI	75,052 72	STYYX	70,680 46
OSLAM	70,830 47	SCNOO	67,115 22	SUMAN	72,394 57
OSLAM	68,892 37	SCNOO-		SUMAN	72,430 58
OSROT	68,890 37	CHROM	67,117 22	SUMAX	72,432 58
P					
PAGES	68,725 34	SCNUU	75,050 72	SUMIT	72,396 57
PBAAG	73,860 70	SDOOG	67,015 20	SUMIT	72,434 58
		SDUUG	75,058 72	SUMMY	72,440 58
		SEROO	66,152 11	SUMOR	72,438 58
				SUMOS	72,398 57
				SUMOS	72,436 58
				SUMUS	65,640 6
				SUMZO	72,442 58
				SUNGO	66,735 17
				SUOOQ	66,100 10
				SUOOQ-	
				CHROM	66,102 10
				SUUAW	75,055 72

Code Word	Cat. No. Page
SUWOO	66,120 11
SYBAT	67,535 25
SYEEO	66,154 11
SYNCO	67,500 25

T

TAHOO	68,480 33
TBKO0	70,140 40
TEEAH	75,982 81
TEFIL	979,208 89
TEQUU-GLAS	75,225 74
TFOOG	66,570 16
TFSOO	66,572 16
TGOOF	66,574 16
TGUOO	66,586 16
THOOE	66,588 16
THWOO	66,590 16
TIOOD	66,580 16
TIYUU	75,041 72
TKUUC	75,042 72
TLOOB	65,710 7
TLUUB	75,976 80
TNUUZ	75,934 80
TOIUU	75,980 81
TOODY	65,680 6
TOOLP	65,700 6
TOOSF	67,060 21
TPUUX	76,200 81
TREPL	72,202 52
TROOV	66,895 19
TRPUU	75,930 80
TRVZO	75,932 80
TUUBA	75,888 79
TUUBX	75,894 79
TUUCL	75,812 78
TUUDY	75,200 74
TUUEM	75,250 74
TUUEM	75,365 75
TUUEM	75,460 76
TUUEM	75,660 77
TUUEM	75,805 78
TUUEM	76,840 84
TUUFZ-IZUUS	75,884 79
TUUGN	75,810 78
TUUIO	75,210 74
TUUKB	75,890 79
TUULP-GLAS	75,235 74
TUUMC-GLAS	75,240 74
TUUNQ	75,902 79
TUUOD	75,205 74
TUUOD	75,305 75
TUUOD	75,405 76
TUUOD	75,605 77
TUUOD	75,800 78
TUUOD	76,835 84
TUUPR	75,220 74

Code Word	Cat. No. Page
TUUQE	75,230 74
TUURS	75,215 74
TUUVU-GLAS	75,245 74
TUUUR	75,892 79
TWOPL	72,166 51

U

UASKU	75,808 78
UASKU	76,845 84
UBECD	70,410 44
UBIKU	75,924 79
UDAKI	75,922 79
UDOOL	69,055 37
UFEDU-IZUUS	75,880 79
UGLAS	69,015 37
UGLIT	69,020 37
ULOUB	75,978 80
ULSMA	69,005 37
ULSOB	69,010 37
ULTRA	68,560 34
UMASK	69,030 37
UMDOO	69,050 37
UMERN	75,075 72
UMEXU	75,905 79
UMKLE	69,035 37
UMLED	75,076 72
UNOOU	70,230 42
UPEOB-IZUUS	75,886 79
USTOL	69,000 37
UUPMI	75,926 79
UUPNL	76,820 84
UUPTX	76,830 84
UUPWD	76,865 84
UUZOB	75,972 80

V

VABAN	73,165 61
VADIV	73,440 65
VAFOO	70,220 42
VAKES	73,172 61
VALAU	73,150 61
VALAU	72,310 55
VALOY	73,000 59
VAMAX	73,042 59
VAROB	73,030 59
VAROB	73,120 60
VAROB	73,400 65
VAROB	73,800 69
VAVIR	73,170 61
VAZEL	73,168 61
VAZIS	73,178 61
VAZUP	73,175 61
VBOOP	73,160 61
VDOON	73,162 61
VEARM	70,370 43

Code Word	Cat. No. Page
VEARM	72,344 56
VEBOL	73,648 67
VEBYX	73,665 67
VECOF	73,935 70
VEDUK	70,825 47
VEFOR	73,638 67
VEGUR	73,650 67
VEHAL	70,380 43
VEHAL	70,532 45
VEHIG	70,540 45
VEKAS	70,820 47
VEKIP	73,682 68
VEKOT	70,800 46
VELAN	73,640 67
VELTU	70,524 45
VELYP	70,812 46
VEPOM	73,040 59
VEPUT	70,810 46
VERBE	73,925 70
VERUP	73,910 70
VERYK	70,802 46
VESIR	73,642 67
VESTA	70,530 45
VETIN	73,645 67
VETWO	73,635 67
VEUUM	75,850 78
VEZUK	67,020 20
VGSOO	73,920 70
VIDOM	66,000 9
VIDOM-	
CHROM	66,005 9
VIKUL	70,805 46
VILUI	66,008 9
VILUI	68,148 29
VIRUP	70,807 46
VIWOO	73,100 60
VIWOO-	
VAROB	73,105 60
VMCOO	70,600 45
VOBIT	73,208 62
VOBIT	73,770 69
VODDA	75,310 75
VOEEB	75,315 75
VOEFC	75,320 75
VOGGM	75,300 75
VOGOS	73,010 59
VOHHD	75,325 75
VOJJE	75,330 75
VOKKF	75,335 75
VOKOM	73,215 62
VOLAM	73,205 62
VOLLG	75,340 75
VOMMH	75,345 75
VOMIR	73,202 62
VONNI	75,350 75
VOOLQ	73,152 61
VOOMD	73,810 69

Code Word	Cat. No. Page
VOONR	73,180 61
VOORT	73,402 65
VOOWI	73,300 63
VAROB	73,310 63
VOPUL	73,200 62
VORGI	70,640 46
VORSA	67,305 24
VORUF	67,310 24
VORYM	73,210 62
VORYM	73,775 69
VOSTN	67,302 24
VOTIV	67,320 24
VOTRA	67,315 24
VULPE	73,880 70
VULVI	73,890 70
VUTOO	73,110 60
VUTOO-	
VAROB	73,115 60
YBOOB	73,350 64
VYOOS	73,360 64

W

WEISU	66,110 11
WEISU-	
CHROM	66,112 11
WENOO	73,045 59
WESCA	65,955 9
WESTO	65,950 9
WICAB	70,555 45
WINKO	66,170 11

Code Word	Cat. No. Page
WINTU	66,180 11
WINTU-	
CHROM	66,182 12
WIOOK	66,175 11
WIOOK	68,178 29
WIVOO	66,185 12
WIVOO	68,182 29
WONDR	73,760 69
WZCOO	70,550 45

X

XADEE	72,220 53
XBEEF	72,222 53
XDQII	72,382 57
XENCA	66,845 18
XEMOO	65,650 6
XIOOM	66,718 17
XOAM	66,490 15
XOABZ	66,492 15
XOOCN	66,494 15
XOODA	66,500 15
XOOFB	66,502 15
XOOGP	66,504 15
XOOHC	66,508 15
XOOIQ	66,512 15
XOOKD	66,514 15
XOOLR	66,516 15
XOOMT	66,496 15
XYFOR	75,962 80
XYSET	75,964 80
XYTHA	75,966 80

Code Word	Cat. No. Page
Y	
YOOBN	73,690 68
YSOOE	66,103 10
YSOOE	66,155 11
YQHOO	70,172 40

Z

ZEKUU-	
ZGUUS	76,980 85
ZISUU	76,940 85
ZOAN	65,760 7
ZOOKE	65,750 7
ZRIOO-	
VOOND	73,680 68
ZROOH	72,230 53
ZROOH	72,268 54
ZROOH	72,302 55
ZROOH	72,390 57
ZSLOO	70,170 40
ZSOOG	67,010 20
ZTNOO	67,018 20
ZTNOO	70,190 42
ZUUCO	76,935 85
ZWMQX	72,446 58
ZWMYX	72,402 57
ZWTOO	70,070 39
ZWTOO	72,300 55
ZWTOO-	
HESUM	70,072 39
ZWTOO-	
HESUM	72,444 58

Reprint by MORGAN & MORGAN, INC., *Publishers*
145 Palisade Street, Dobbs Ferry, N. Y. 10522

E. LEITZ, INC. **730 Fifth Avenue** **NEW YORK, N. Y.**

BOOKLET No. 1275

M-3-39-DD Printed in the U. S. A.

PRICE SHEET — CATALOG No. 1275

**COMPLETE ILLUSTRATED PRICE LIST OF
LEICA CAMERAS AND ACCESSORIES**

Page	Cat. No.	Price	Page	Cat. No.	Price	Page	Cat. No.	Price
57	72,412	53.50+	64	73,380	9.00	70	73,860	12.90
	72,413	8.50+	65	73,400	34.50		73,863	16.50
	72,414	18.00+		73,402	45.00		73,870	10.50
	72,416	612.40+		73,405	1.35		73,880	16.50
58	72,430	40.50+		73,408	1.35		73,890	16.50
	72,432	40.50+		73,410	1.35		73,910	6.60
	72,434	40.50+		73,412	1.35		73,915	7.80
	72,436	58.00+		73,415	1.35		73,920	13.20
	72,438	60.00+		73,418	1.35		73,925	9.60
	72,440	62.00+		73,420	1.35		73,930	12.45
	72,442	72.00+		73,421	1.35		73,935	138.00
	72,444	10.50		73,422	1.35	71	75,000	45.00
	72,446	4.50+		73,425	9.60		75,010	78.00
	72,448	24.00+		73,428	2.40		75,018	87.00
59	73,000	49.50		73,440	39.60		75,022	52.80
	73,010	51.00	66	73,600	16.20		75,025	85.80
	73,020	31.50		73,605	16.20		75,030	94.80
	73,030	34.50		73,610	19.20		75,038	46.50
	73,040	73.50		73,615	19.20	72	75,040	26.10
	73,042	108.00		73,620	57.00		75,041	33.00
	73,045	42.00		73,625	57.00		75,042	42.00
	73,060	9.00		73,632	3.60		75,044	11.55
60	73,100	84.00	67	73,635	4.80		75,045	3.15
	73,105	118.50		73,638	5.40		75,046	11.55
	73,110	106.50		73,640	5.40		75,047	3.15
	73,115	141.00		73,642	6.60		75,048	11.55
	73,120	34.50		73,645	14.40		75,050	5.40
	73,130	7.20		73,648	16.80		75,052	13.20
61	73,150	3.60		73,650	24.00		75,055	1.05
	73,152	3.60		73,652	10.80		75,058	2.70
	73,160	2.70		73,660	2.10		75,060	3.30
	73,162	2.10		73,665	16.80		75,065	4.50
	73,165	4.20	68	73,680	15.00		75,070	3.50*
	73,168	3.15		73,682	1.20		75,075	3.00
	73,170	4.20		73,685	13.80		75,076	1.50
	73,172	4.20		73,688	18.00		75,080	39.00
	73,175	1.05		73,690	1.80	74	75,200	69.00
	73,178	1.05	69	73,750	1.50*		75,205	5.40
	73,180	3.45		73,755	.35#		75,210	74.40
62	73,200	25.20		73,760	.40#		75,215	107.40
	73,202	7.20		73,765	7.50		75,220	100.50
	73,205	3.00*		73,770	6.30		75,225	116.40
	73,208	6.30		73,772	4.20		75,230	108.30
	73,210	6.30		73,775	6.30		75,235	118.35
	73,215	99.00		73,800	34.50		75,240	122.25
63	73,300	270.00		73,810	2.10		75,245	125.25
	73,310	304.50		73,820	2.40		75,250	13.80
	73,320	9.00		73,830	9.60	75	75,300	87.00
64	73,350	175.50		73,840	4.80		75,305	5.40
	73,360	198.00	70	73,850	1.50		75,310	92.10

Page	Cat. No.	Price	Page	Cat. No.	Price	Page	Cat. No.	Price
75	75,315	125.10	79	75,886	33.90	84	76,845	2.40
	75,320	118.20		75,888	48.60		76,850	21.00+
	75,325	134.10		75,890	52.50		76,855	8.50+
	75,330	126.00		75,892	55.50		76,860	8.50+
	75,335	136.05		75,894	93.00		76,865	103.10+
	75,340	139.95		75,902	3.90		76,870	3.60*
	75,345	142.95		75,905	4.65		76,875	18.00+
	75,350	180.45		75,920	4.80		76,880	22.00+
	75,365	13.80		75,922	4.80	85	76,910	75.00+
76	75,400	120.00		75,924	4.80		76,915	3.60*
	75,405	5.40		75,926	4.80		76,920	6.60+
	75,410	125.40	80	75,930	4.65		76,930	154.00+
	75,415	158.40		75,932	4.20		76,935	10.35+
	75,420	167.40		75,934	3.90		76,940	11.00+
	75,425	159.30		75,938	12.90	86	79,000	72.00
	75,430	169.35		75,940	13.50		79,010	75.00
	75,435	173.25		75,960	3.60*		79,020	69.00
	75,440	176.25		75,962	3.70+		79,030	75.00
	75,445	213.75		75,964	4.50+		79,040	90.00
	75,460	13.80		75,966	7.25+		79,045	99.00
	75,465	13.80		75,970	8.20*	87	79,050	120.00
77	75,600	123.75		75,972	13.00*	3	79,055	126.00
	75,605	5.40		75,974	6.00*		79,060	159.00
	75,610	129.15		75,976	10.00*		79,065	195.00
	75,615	162.15		75,978	22.00*		79,070	162.00
	75,620	171.15	81	75,980	11.25	88	79,075	195.00
	75,625	163.05		75,982	24.00		79,080	195.00
	75,630	173.10		75,990	16.50		79,085	174.00
	75,635	177.00		75,992	19.50		79,090	180.00
	75,640	180.00		75,994	19.50		79,095	210.00
	75,645	217.50		76,100	90.00	89	79,200	168.00
	75,660	13.80		76,103	18.00		79,202	162.00+
78	75,800	5.40		76,105	20.00		79,204	188.00+
	75,805	13.80		76,200	40.50		79,206	188.00+
	75,808	2.40	82	76,250	36.00	4	79,208	7.50+
	75,810	2.40		76,255	4.00**		79,210	26.50+
	75,812	2.40			3.50**		79,212	18.75+
	75,825	21.00+	83	76,800	132.00+	90	See separate price sheet	
	75,827	8.50+		76,805	96.00+	5	79,500	4.00
	75,829	8.50+		76,810	178.00+		79,505	3.00
	75,830	38.00+		76,815	124.00+		79,510	.50
	75,850	39.00	84	76,820	21.00+		79,515	3.50
79	75,880	33.00		76,830	22.50+	6	79,520	1.65
	75,882	26.10		76,835	5.40		79,525	1.35
	75,884	42.00		76,840	13.80			

Page	Cat. No.	Price	Page	Cat. No.	Price	Page	Cat. No.	Price
2	65,000	\$ 87.00	7	65,710	525.00	11	66,110	8.40
	65,002	93.00		65,720	105.00		66,112	9.90
	65,005	39.00		65,730	2.10		66,115	24.60
	65,008	45.00		65,740	102.00		66,120	6.30
	65,010	99.00		65,750	30.00		66,150	17.40
	65,012	106.50		65,760	16.20		66,152	17.40
	65,020	87.00	8	65,920	1.50		66,154	17.40
	65,022	93.00		65,922	1.50		66,155	1.50
	65,030	135.00		65,925	1.50		66,156	1.05
	65,032	141.00		65,930	3.60		66,170	10.50
	65,035	150.00			7.20		66,175	1.35
	65,037	156.00			6.30		66,180	12.60
	65,050	105.00	3		7.20			
	65,052	111.00		65,932	8.40	12	66,182	14.10
	65,055	153.00			8.40		66,185	1.35
	65,057	159.00			9.30		66,240	19.50
	65,060	168.00		65,935	10.00		66,244	3.90
	65,062	174.00		to about	20.00		66,245	3.30
	65,065	204.00		65,937	13.50		66,246	17.10
	65,067	210.00		to about	27.00		66,248	13.80
	65,080	123.00	9	65,950	22.50		66,249	1.80
	65,082	171.00		65,955	1.80		66,250	12.00
	65,084	186.00		65,958	1.80		66,251	13.50
	65,086	222.00		66,000	26.40		66,255	13.50
	65,088	309.00		66,005	27.00		66,256	15.00
	65,200	192.00	4	66,008	1.35		66,258	.75
	65,205	240.00		66,050	10.50		66,260	.75
	65,400	31.50		66,052	1.05		66,262	.90
	65,405	13.50	10	66,055	17.40			
	65,408	18.00		66,060	17.40	13	66,300	3.00
	65,600	69.00		66,062	1.35		66,302	3.00
	65,610	57.00		66,070	9.45		66,304	3.00
	65,620	48.00		66,075	11.55		66,306	3.00
	65,630	63.00		66,080	1.05		66,315	3.00
	65,640	99.00		66,081	1.35		66,318	3.60
	65,650	186.00		66,085	10.50		66,320	3.60
	65,660	180.00		66,090	12.90		66,322	3.60
	65,670	75.00		66,092	.90		66,324	3.60
	65,680	135.00		66,100	22.50		66,340	4.80
	65,690	114.00		66,102	24.60		66,342	4.80
	65,700	234.00		66,103	1.50		66,344	4.80
	65,702	19.50		66,104	1.05		66,346	4.80

E. LEITZ, Inc., 730 Fifth Avenue, New York, N. Y.

